

2002 Winnebago Adventurer®



Research plus innovation yields  
one incredible motor home.







35U-Blue Shadow

### It's in the details.

You'll like what you see as you enter the 2002 Adventurer. The spacious interior is well thought out and executed down to the smallest component. You'll notice the eye-pleasing and comfortable Stitchcraft premium furniture the moment you walk in. Day/night pleated shades offer several choices of privacy and light. The rich oak doors and drawers feature a new catalyzed finish (typically found in finer homes) for unsurpassed beauty and durability.

Nothing is left to chance when it comes to being user-friendly and comfortable. Increased living space is made possible by the StoreMore® slideout system. It moves interior cabinets and exterior storage compartments out with the slideroom for easy access. The ceiling-ducted TrueAir™ Residential Central Air Conditioning system delivers quiet, efficient cooling. A one-piece textured-fabric ceiling completes the look.

### It takes a lot of listening to make a motor home this great.

Step inside the 2002 Winnebago Adventurer and you'll immediately sense this is the motor home designed and created for RVers. Explore further and you're sure to find features and details that make you think, "I wonder why nobody else thought of this?"

The simple truth. The 2002 Adventurer represents the most intensively researched Winnebago motor home that we've ever produced. It was created with the help of extensive consumer feedback from RV enthusiasts and fine-tuned through rigorous testing and field trials. The result: an ideal fusion of features and design.

Some things are simple, like the large, easy-to-operate switches. Others are more complex, such as PowerLine,™ which automatically senses and controls 110-volt electrical usage. Still others just make good sense, such as the new RV Radio designed specifically for RV use with large knob controls, cassette/CD player and weather band.

Experience the Winnebago Adventurer and discover what a motor home can be.

### Grab brunch or go gourmet.

It's a pleasure to prepare snacks or meals in the spacious galley of the Adventurer. Convenient features include a three-burner Magic Chef® range with oven, and a large, 30" microwave that is mounted over the range. The recessed, molded sink is stain resistant, easy to clean and includes a water purification system with a separate faucet. Solid surface countertops add a touch of class and come with a flip-up extension for even more valuable counter space. Underfoot, the galley has great-looking, long-wearing vinyl woodgrain plank floorcovering.



POWERLINE™



STOREMORE



**Pleasant dreams.**

The bedroom slideout offers abundant living and storage space, mirrored wardrobe and a changing area. Most important, you'll enjoy a good night's rest on the walk-around queen-size bed with Serta® innerspring mattress.



35U-Blue Shadow



35U-Blue Shadow

**Personal space or work space.**

The desk/vanity area in the 35U features a multi-purpose countertop with a tip-up storage area, a tip-out clothes hamper, an additional phone/modem jack and a chair that folds for easy stowing. There is also a standard, built-in 19" TV.



32V

**Stock up.**

Bring along the makings for all your favorite meals and recipes. It's easy with Adventurer's slideout pantry with adjustable shelves (available on select models). The double-door refrigerator is standard, while the larger side-by-side refrigerator with built-in icemaker is available on the 35U and 37G.



**Park anywhere.**

Not only is it attractive and comfortable, the hoop-base lounge chair can be repositioned anywhere you want when the motor home is not moving. It rocks, reclines, has a footrest and is also available in luxurious leather.



32V

**Well-designed bath.**

Adventurer's bathroom is spacious and well designed. Standard features include an overhead shower skylight; single-control shower faucet; makeup lights; roof-mounted, powered ventilator fan; and abundant cabinetry for added storage.



**We've thought of everything.**

The hair dryer in the bathroom is mounted so it doesn't take up valuable drawer or countertop space. It even includes a night-light.



**There when you need it.**

Need a light? Spill the popcorn? The available accessory package includes a rechargeable/cordless flashlight and handheld vacuum cleaner. Both are conveniently located in a lower galley cabinet.



37G

**Wash and wear.**

Skip the trip to the Laundromat. Equip your Adventurer with the available washer/dryer combo (in the 37G only).





### Take to the road.

The cockpit of the Adventurer is designed with your driving pleasure in mind. A lower engine cover design allows for easier access to the driver and passenger front seats. The dash controls are conveniently located and feature large, easy-to-read switches and gauges that are sized for easier operation. The standard dash-mounted electronic compass is a helpful navigation tool and provides exterior temperature at the touch of a button. The available Sony® rearview monitor system is built into the dash and includes one-way audio for safe backing and maneuvering.



### Drive in comfort.

Arrive refreshed from your travels thanks to premium high-back Stitchcraft cab seats. With multi-position armrests, swivel, recline and slide features, which are easy to reach and operate, you can adjust to the position that fits you best. Available upgrades include six-way power assist and leather.



### Upfront convenience.

Pull out the available passenger-side, dash-mounted workstation and you'll find a handy place for using your laptop computer, writing letters or playing cards. There is also a convenient storage area underneath.

### This radio's a "wow."

Our engineers worked closely with the radio manufacturer to create the RV Radio designed specifically for RV use. It includes an AM/FM stereo cassette/CD player with a built-in weather band for immediate weather updates at the touch of a button. Its large control knobs and buttons are easy to operate.







**Sit back and relax.**

It's a couch! It's a recliner! It's a bed! It's all three! It's the Rest Easy™ Multi-Position Lounge.



At the touch of a button, it goes from a couch to a recliner with a pull-out ottoman.



Touch the button again and it's a comfortable 60" x 75" bed. A Winnebago Industries exclusive, Rest Easy comes standard with fabric covering or you can upgrade to the available leather.



**First-class entertainment.**

Enjoy the added dimension you get from a variety of entertainment options starting with the standard 25" TV. The available VCR, DVD player and digital satellite system guarantee that you'll never have to do without your favorite programs or movies. Enjoy the luxury of movie-theatre-quality sound with the available Deluxe Sound System with QSurrround™ 5.1 sound. This feature also includes a stereo TV and VCR. Select the available 300 watt inverter and enjoy these features even when you're not connected to shoreline or generator power.



**Well-adjusted.**

The standard sound system features control knobs on the bottom of the lounge-area overhead cabinets, which allows for individual speaker volume control.



**Wish on a satellite.**

Expand your viewing options with the available digital satellite system. For added flexibility, every Adventurer comes prewired for this option so you can easily add it if you choose.



**Easy in. Easy out.**

The smooth-operating driver-side door makes entry and exit more convenient.



**Enjoy the power.**

Keep your electrical system running smoothly, even when operating your central air conditioning on a 30-amp shoreline, with the PowerLine Energy Management System. It monitors onboard 110-volt electrical usage and automatically minimizes the nuisance of campground circuit breaker tripping by controlling the operation of "postponable" electrical loads during heavy power usage. As demand decreases, PowerLine automatically returns power to the secondary appliances and systems.





### Store more gear conveniently.

A Winnebago Industries original, StoreMore is still the industry's premium slideout system. StoreMore features large, well-lit exterior storage compartments that are designed to accommodate bulky and odd-shaped items. Best of all, these compartments extend along with the slideroom for easy access without crawling under the slideroom. You'll also appreciate how easy it is to open the exterior compartment doors, thanks to single-paddle latches and gas struts.



### Central water works.

Rinse off muddy or sandy gear outside at the exterior wash station. The same heated compartment also houses the major plumbing connections and service points for added convenience. System winterization and storage prep of the plumbing system is a breeze with the standard water heater bypass and manual winterization valves.



### Everything is A-OK.

The OnePlace™ Systems Center places important and frequently used switches, gauges, levels and controls in one convenient location so you can easily check them at a glance.



### The quiet powerful type.

A 5,500 watt generator is standard. Or select the available 7,000 watt model for even more capacity. Both are Onan® Marquis Gold™ models that feature electronic fuel injection, digital voltage control and an advanced vibration reduction design that makes them the quietest RV generators in their class.



### No drips.

We don't overlook even the smallest detail: built-in rain gutters channel rain away from the sidewalls, doors and windows to help keep your Adventurer's exterior clean and streak free.





### Select your perfect climate.

Interior climate control has never been better, thanks to Winnebago Industries' exclusive TrueAir Residential Central Air Conditioning. It utilizes superior cooling technology to supply optimum environmental control throughout the coach. At the heart of the system is a Coleman®-Mach® unit, which is located below the floor line of the coach. This not only provides a lower vehicle profile, it reduces interior noise and enables easier servicing. It also eliminates A/C-related condensation and roof run-off and lowers the vehicle's center of gravity.

TrueAir's custom-designed electronic thermostat is easy to use and offers superior temperature control. The PowerLine Energy Management System lets you fully utilize TrueAir, even when connected to a 30-amp service, by cycling secondary appliances during peak usage to maintain optimum cooling capacity. Dual high-efficiency cooling circuits supply conditioned air through ceiling-routed ducts specifically designed to reduce airflow restrictions that can rob cooling efficiency. Improved interior air quality is provided by a residential-style filter that is larger and easier to replace than foam pad filters used on most roof-mounted A/C units. For more precise comfort, airflow volumes to specific areas are easily regulated to accommodate personal preferences, with individual ceiling-mounted vents that adjust for both airflow and direction.

Choose the available Home Comfort Plus Package, which provides a convenient source of heat on cool mornings without starting the LP-fueled furnace.

**TRUEAIR**  
RESIDENTIAL CENTRAL AC



### Seeing is believing.

Adventurer's exterior mirrors feature larger flat and convex surfaces for expanded visibility and safety. Adjusting them is a snap thanks to the standard electric remote controls, which also include a defrost feature.



### Get a handle on it.

Whether you are setting up at a campground or making a quick stop at a convenience store, the easy-to-grab exterior assist handle and extra-large interior assist bar help you get in and out with ease.



### Now that's entertainment.

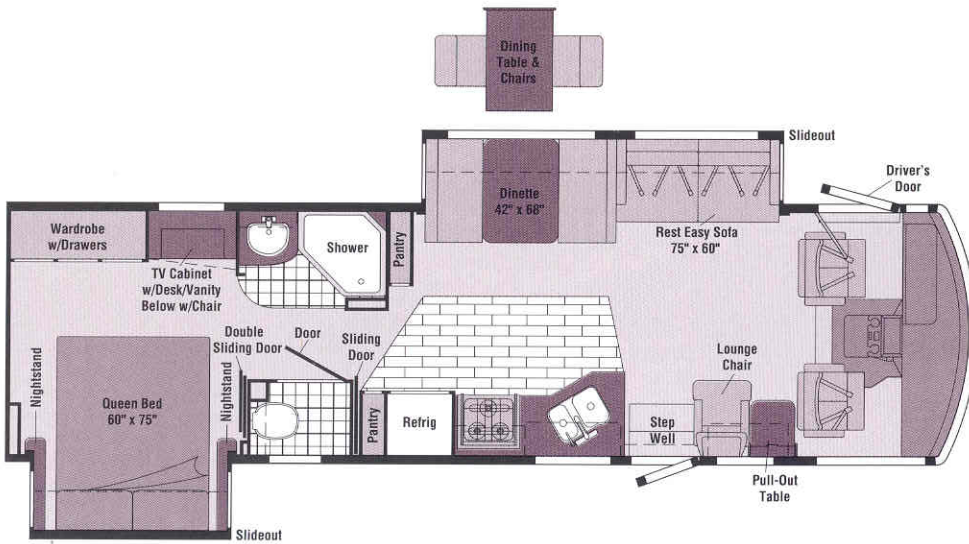
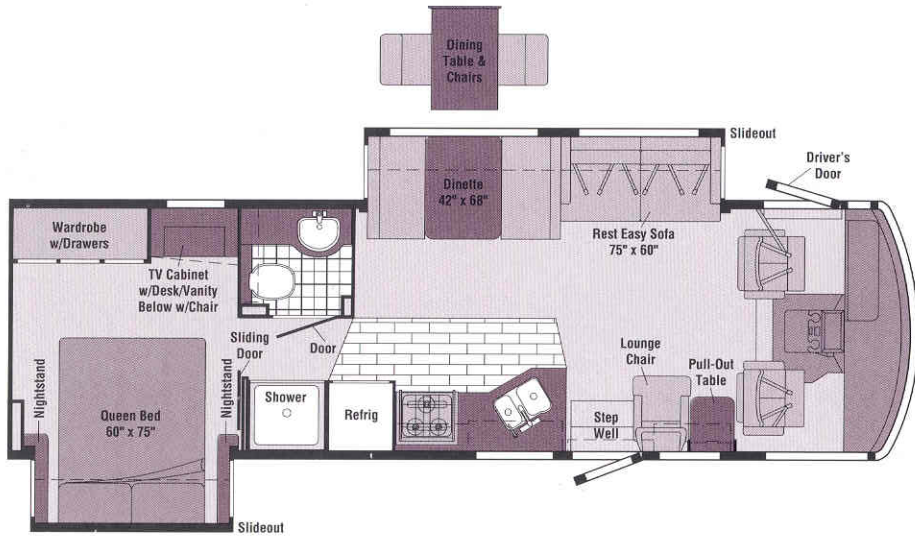
Adventurer comes equipped with an exterior entertainment center that includes AM/FM stereo with an antenna, a cassette or CD player, 12-volt DC receptacle, TV jack, 110-volt outlet, speakers and a removable table. The compartment locks securely.



### The key to it all.

The KeyOne™ system allows one key to open most door locks. What could be simpler? For added convenience, the key is double bitted so it easily fits into the lock no matter which way the key is inserted.





**30Y NEW!**

- Dinette/couch **STOREMORE** Slideout System
- Rear bedroom slideout with large wardrobe and desk/vanity area
- Split bath design.
- **Rest Easy** Multi-Position Lounge



Sorrento Ivory



Garden Gate



Blue Shadow

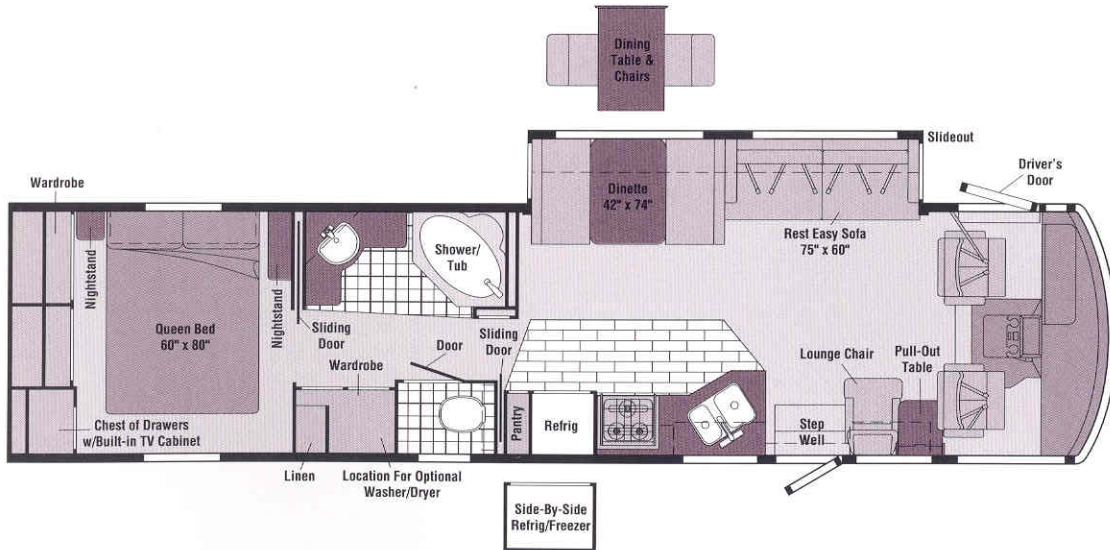
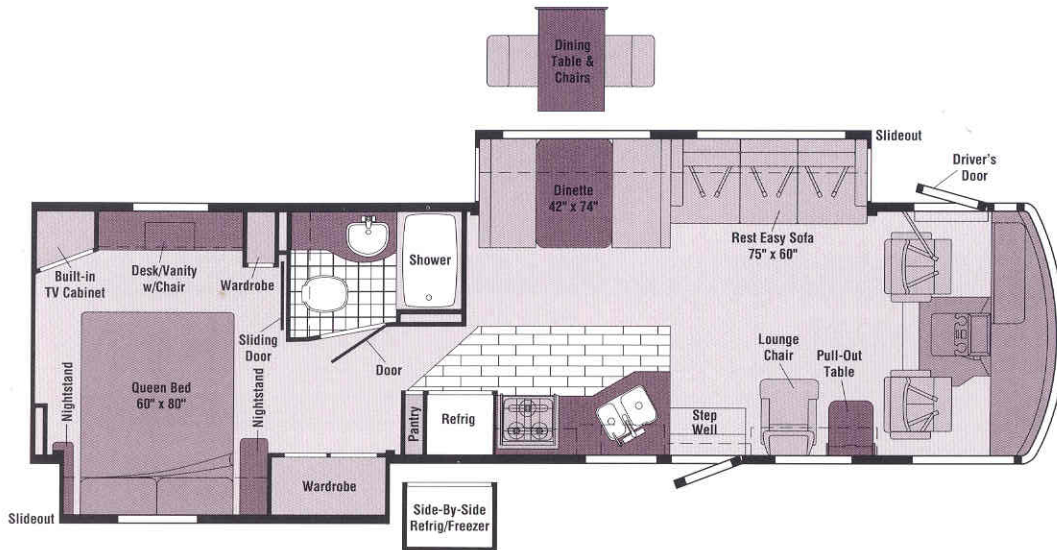
**32V NEW!**

- Dinette/couch **STOREMORE** Slideout System
- Rear bedroom slideout with large wardrobe and desk/vanity area
- Split bath design w/private toilet area
- Dual pull-out pantries
- **Rest Easy** Multi-Position Lounge



# FLOORPLANS

# EXTERIORS



Note: Dimensions shown are for sleeping space only and dashed lines denote overhead storage areas.

## 35U

- Dinette/couch **STOREMORE** Slideout System
- Rear bed/wardrobe slideout with large vanity and built-in TV
- Moveable hoop-base lounge chair
- Multi-Position Lounge



Moss Green Metallic



Wild Orchid Metallic



Sahara Metallic

## 37G

- Dinette/couch **STOREMORE** Slideout System
- Bedroom with chest-of-drawers, wardrobe and built-in TV cabinet
- Spacious split bath with tub/shower and separate toilet area
- Available washer/dryer
- Multi-Position Lounge



Portsmouth Oak Woodgrain





### The outside story.

Adventurer's one-piece fiberglass sidewall is amazingly tough—typical for Winnebago Industries' design. Laterally mounted floor risers allow for true basement storage. The hydraulic jacks help keep the Adventurer stable and level while parked, and the stainless steel wheel liners add a touch of class.

## SPECIFICATIONS

	30Y NEW	32V NEW	35U	37G
Length	30'11"	32'11"	34'11"	37'5"
Exterior Height* - Ford®/Workhorse™	11'9"/NA	11'8"/11'11"	11'9"/12'	11'8"/12'
Exterior Width <sup>Δ</sup>	8'5.5"	8'5.5"	8'5.5"	8'5.5"
Exterior Storage (cu. ft.)	46	54	90	103
Interior Height	6'8"	6'8"	6'8"	6'8"
Interior Width	8'0.5"	8'0.5"	8'0.5"	8'0.5"
Fresh Water Capacity w/Heater* (gal.)	90	90	90	90
Holding Tank Capacity - Black/Gray (gal.)	45/41	52/45	40/54	53/55
LP Capacity <sup>∅</sup> (gal.)	28	28	28	28
Fuel Capacity - Ford and Workhorse (gal.)	75	75	75	75
GCWR - Ford//Workhorse (lbs.)	26,000/26,000	26,000/26,000	26,000/26,000	26,000/26,000
GVWR - Ford//Workhorse (lbs.)	20,500/NA	20,500/20,700	20,500/22,000/20,700/22,000	22,000/22,000
GAWR - Front, Ford//Workhorse (lbs.)	7,000/NA	7,000/7,500	7,000/7,500/7,500/8,000	7,500/8,000
GAWR - Rear, Ford//Workhorse (lbs.)	13,500/NA	13,500/13,500	13,500/14,500/13,500/14,500	14,500/14,500
Wheelbase	190"	208"	228"	248"

Standard - S Optional - O

30Y 32V 35U 37G

### AUTOMOTIVE/CHASSIS


	30Y	32V	35U	37G
Chassis - Ford 6.8L Super-Duty V-10 SOHC Triton™ engine, 310 hp, 4-speed overdrive transmission, 130-amp alternator, 4-wheel anti-lock brakes	S	S	S	S
Chassis - Workhorse 8.1L Vortec V-8, 340 hp, Allison® 1000 Series 5-speed overdrive transmission, 4-wheel anti-lock brakes, 145-amp alternator		O	O	O
Leveling Jacks HWH® hydraulic, manual touch pad w/indicator lights & chime, Tire spare, Tire Tool wrench, Trailer Hitch 5,000-lb. drawbar/350-lb. maximum vertical tongue weight & wiring <sup>∅</sup> , Wheel Liners stainless steel	S	S	S	S
Trailer Hitch 5,000-lb. drawbar/500-lb. maximum vertical tongue weight (Workhorse Chassis) <sup>∅</sup>		S	S	S

### CAB AREA & DRIVER CONVENIENCES

	30Y	32V	35U	37G
Cab Seats (Fabric) w/3-point adjustable seat belts, armrests, multi-adjustable swivel/slide/recline, Cab Sound Control Package Ford® Cigarette Lighter/12-Volt Electrical Supply, Compass electronic w/outdoor thermometer, Convenience Tray, Cruise Control, Driver Door w/power window, assist bar, exterior step, KeyOne (common w/entrance door & exterior storage compartments), Driver Door Trim Panel w/beverage holder, power mirror controls, Floor Mats carpet, driver & passenger, Map Light, Shades light filtering, cab windows, Shelf passenger side w/beverage holder, powerpoint, Steering Wheel tilt w/power assist, Sunvisors (2), Window (passenger) full slider w/screen, Windshield Wipers intermittent	S	S	S	S
Cab Seats leather seating surface w/manual lumbar support	O	O	O	O
Cab Seat Pedestal 6-way power assist (driver)	O	O	O	O
Cab Seat Pedestal 6-way power assist (driver & passenger)	O	O	O	O
Defroster Fans (2) auxiliary 2-speed w/instrument panel switch	O	O	O	O
Monitor System rearview w/single camera & 1-way audio, Sony	O	O	O	O
Workstation pull-out, passenger side	O	O	O	O

30Y 32V 35U 37G

### ENTERTAINMENT

	30Y	32V	35U	37G
CB Prep (includes: antenna, antenna lead, 12-volt power supply), Entertainment Center (Exterior) w/Cassette DC receptacle, AC duplex receptacle, AM/FM radio, exterior antenna jack, TV jack, radio antenna, speakers (2), lockable compartment, removable TV table,  (Cab) AM/FM stereo cassette/CD w/weather band, roof-mounted flexible rubber antenna, speakers (4), Radio Power Switch main/auxiliary battery, Satellite System Ready, Telephone input & interior jack(s), TV 19" Color AC w/remote, bedroom, TV 25" Color AC w/remote, TV Enhancement Package antenna (amplified), 12-volt powerpoint, interior jack(s), coax wiring, cable input, antenna check reminder light, Video Selection System	S	S	S	S
Compact Multi-disc Changer Sony		O	O	O
DVD* (digital video disc) player		O	O	O
Entertainment Center (Exterior) CD Player*		O	O	O
Satellite Dish Antenna Winegard® RV digital, elevation sensing unit		O	O	O
Sound System deluxe, w/QSurround, TV 25" stereo color AC, stereo VCR, amplifier, cube speakers (5), sub-woofers (2)		O	O	O
VCR w/remote*		O	O	O

### INTERIOR

	30Y	32V	35U	37G
Ceiling textured fabric, Clock, Curtain front wraparound, pleated w/wands, Lights ceiling, incandescent w/wall switches, Lights fluorescent, recessed, galley, lounge w/wall switches, Lights reading, Mirror w/beveled edge, Shades day/night pleated	S	S	S	S
Accessory Package rechargeable flashlight, rechargeable vacuum cleaner		O	O	O
Light wall lamp (lounge area)			S	S



# SPECIFICATIONS

Standard - S	Optional - O	30Y	32V	35U	37G
Picture					S
Windows dual-glazed/thermo-insulated		O	O	O	O

## CABINETRY

Woodgrain Portsmouth Oak stile-and-rail construction w/raised panel inserts on upper doors		S	S	S	S
--------------------------------------------------------------------------------------------	--	---	---	---	---

## COUNTERTOPS

Laminate w/wood edge (dINETTE, bath, bedroom), Solid Surface galley		S	S	S	S
---------------------------------------------------------------------	--	---	---	---	---

## FLOORCOVERING

Carpeting w/pad, Vinyl bath, Vinyl Woodgrain Plank galley		S	S	S	S
-----------------------------------------------------------	--	---	---	---	---

## FURNITURE

Lounge Chair* (Fabric) cabinet & table w/magazine rack, hoop-base, recliner, rocker, footrest, <b>Rest Easy Multi-Position Lounge (Fabric)</b> w/throw pillows, <b>DINETTE</b> access to storage below w/slideout drawers		S	S	S	S
<b>Rest Easy Multi-Position Lounge (Leather)</b> w/throw pillows		O	O	O	O
Dining* table & chairs (2) free standing, (2) folding		O	O	O	O
Lounge Chair (Leather) hoop-base		O	O	O	O

## GALLEY

Coffemaker, Countertop Flip-up Extension, Faucet single-control, Light fluorescent, under cabinet, Microwave Oven Sharp,* Range three-burner w/large oven, glass door, recessed, sealed burners, Magic Chef, Range Cover, Refrigerator/Freezer large double-door, Norcold,* Roof Vent powered ventilator fan, Sink double-bowl molded w/sink covers (countertop material), Wall Border, Wastepaper Basket, Water Purification System w/separate faucet		S	S	S	S
Microwave/Convection Oven Sharp		O	O	O	O
Pantry w/adjustable shelves (32V w/dual pantries)			S	S	S
Range Top three-burner w/storage below, recessed, sealed burners, Magic Chef		O	O	O	O
Refrigerator/Freezer large double-door w/icemaker, Norcold		O	O	O	O
Refrigerator/Freezer side-by-side w/icemaker, Dometic**				O	O

## BATH

Cabinet lavatory, Cabinet medicine, Faucet (lavatory) single-control, Faucet (shower) single-control w/flush shower head, Hair Dryer wall-mounted w/night-light, Light shower, Lights makeup, Roof Vent power, Shower Skylight, Sink oval, Tissue Holder, Toilet (Porcelain) w/foot-pedal flush & sprayer, Towel Rack 3-rod, mounted to door		S	S	S	S
Magazine Rack		S		S	S
Mirror (2) w/beveled edge					S
Robe Hook		S			
Shower		S	S		
Shower w/removable clothes rod				S	
Shower/Tub					S
Shower Door folding				S	
Shower Door textured glass		S	S	S	
Shower Head handheld		O			O
Shower Package handheld shower head, fold-down bath shower seat				O	O
Towel Bar		S		S	S
Towel Ring(s)		S	S		S
Wall Border		S	S		

## BEDROOM

Bed queen, Serta, innerspring mattress, w/underbed storage, Bedspread pillows, throw pillow, Ceiling Molding, Lights decorative wall lamps (2), Nightstands (2), Powerpoint 12-volt DC receptacle(s), Wall Border, Wardrobe Cabinet carpeted floor, clothes rod, drawers (30Y, 32V), light, shelves (37G)		S	S	S	S
-----------------------------------------------------------------------------------------------------------------------------------------------------------------------------------------------------------------------------------------------------------------------------------------------------------	--	---	---	---	---

	30Y	32V	35U	37G
Hamper tip-out				S
Headboard	S	S		
Mirror backwall w/wood frame	S	S	S	
Vanity Cabinet w/fold-up countertop, folding chair	S	S	S	

## EXTERIOR

Awning* patio, Awning Rails w/rain gutters, Door entrance w/separate screen door, deadbolt lock, Door fuel-fill, locking, Entrance Door Steps double, electric w/doorjamb switch, Exterior Graphics Packages Moss Green Metallic, Or Wild Orchid Metallic, Or Sahara Metallic Ladder, Lights porch light w/interior switch, Light service center, Mirrors electric remote w/defrost, Mudflaps rear, Receptacle AC duplex, Sidewall Skin one-piece smooth fiberglass, high-gloss, Storage Compartments smooth valance panels, trunk liner, gas struts, TriMark KeyOne System, paddle latch, lights	S	S	S	S
Awning* patio, electric	O	O	O	O
Undercoating Workhorse only		O	O	O

## SYSTEMS

Automotive Heater/Air Conditioner, Auxiliary Start Circuit, Batteries (Coach) (2) deep cycle, Battery (Coach) disconnect system, Battery Charge Control automatic dual, Drain 1" water tank, Electrical Distribution System AC & DC breaker panels, 45-amp converter/charger, Generator 5,500 watt, Onan Marquis Gold, gas, Generator/Shoreline Automatic Changeover Switch, ONEPLACE Systems Center wall-mounted, battery - digital voltmeter, energy management display, generator hourmeter gauge, generator start/stop switch, holding tank levels, LP tank level, solar panel/battery charger light, water heater switch & lights, water pump switch, water tank level, Power Cord 30-amp, POWERLINE Energy Management System, Service Center (Drainage/Water) city water hookup/tank diverter fill, drainage valves, exterior wash station w/pump switch,* sewer hose, Service Center (Electrical) cable input, power cord, telephone input, Sewer Hose 10', Solar Panel 10 watt w/battery charger, Tank flushing system, black tank only, Tank holding, heated compartment, Tank LP, permanent mount w/gauge, TRUEAIR Central Air Conditioning System, Water Heater 10-gallon electronic ignition, 120 vac/LP gas w/Motoraid, Water Heater Winterization Bypass Valve manual, Wash Station exterior, Water Pump demand, Water System Winterizing Valve manual, Water Tank Fill gravity, Water Tank Fill pressurized city hookup w/diverter valve, Water Tank Fill w/locking door	S	S	S	S
Furnace 35,000 BTU, low profile		S	S	
Furnace 40,000 BTU, low profile			S	S
Generator 7,000 watt, Onan Marquis Gold, gas	O	O	O	O
Home Comfort Plus Package central air heat pump, auxiliary automotive heater, insulated powered ventilator fans (bath & galley)	O	O	O	O
Inverter* DC/AC, 300 watt	O	O	O	O
Power Cord 50-amp	O	O	O	O
Washer/Dryer Combination				O
Washer/Dryer Prep				S

## SLIDEOUT

Slideout Room hydraulic powered, (couch/dINETTE), w/slideroom cover, <b>STORMORE</b>	S	S	S	S
Slideout Room hydraulic powered, (bed 30Y, 32V & bed/wardrobe 35U)	S	S	S	

## SAFETY

Assist Bar interior, Assist Handle exterior, acrylic, Bumpers front & rear, Detectors/Alarms LP leak, smoke, carbon monoxide, Fire Extinguisher 10 B.C., Ground Fault Interrupter, Light center high-mount stop lamp, Light courtesy w/wall switch, Lights daytime running lamps, Ford, Window escape, Windshield laminated safety glass	S	S	S	S
------------------------------------------------------------------------------------------------------------------------------------------------------------------------------------------------------------------------------------------------------------------------------------------------------------------------------------------	---	---	---	---

## WARRANTY

12-month/15,000-mile basic limited warranty, 36-month/36,000-mile warranty on structure,** 10-year limited parts & labor warranty on roof	S	S	S	S
-------------------------------------------------------------------------------------------------------------------------------------------	---	---	---	---

\* The height of each model is based on the curb weight of a typically equipped unit on the standard chassis. The actual height of your vehicle may vary by as much as 2" depending on chassis or equipment variations.

† Adventurer floorplans feature a wide-body design—over 96" in making your purchase decision, you should be aware that some states restrict access on some or all state roads to 96" in body width. Before making your purchase decision, you should confirm the road usage laws in the states of interest to you. \*Not all items available in combination. See dealer for details. NA = Not Available.

‡ Capacities shown are tank manufacturer's listed water capacity (W.C.). Actual filled LP capacity is 80% of listing due to overfilling prevention device on tank. \*\*See your dealer for complete warranty documentation information.

□ Actual towing capacity is dependent on your particular loading and towing circumstances which includes the GVWR, GAWR & GCWR as well as adequate trailer brakes. Please refer to your vehicle's operator's manual for further towing information.

Winnebago Industries' continuing program of product improvement makes specifications, equipment, model availability and prices subject to change without notice. Comparisons to other motor homes are based on the most recent information available.



## Not all motor homes are created equal.

As you take a closer look, you'll see that there is much more to the Winnebago Adventurer than a long list of standard features and compelling floorplans. Beneath it all you'll find a SuperStructure™ foundation of strength and durability, and Winnebago Industries' recognized service and warranty support.

### We are committed to service.

We back our motor homes with the best after-the-sale service in the industry.

- 12-month/15,000-mile basic limited warranty
- 36-month/36,000-mile warranty on structure
- Standard 10-year limited parts-and-labor roof warranty
- Complimentary 24-hour Roadside Assistance Program
- TripSaver emergency warranty parts shipments
- National Dealer service network



### Certified quality.

Recreation Vehicle Dealer Association members annually rate RV manufacturers on the quality of their products, and on their sales and service support. Winnebago Industries has achieved the coveted Quality Circle award every year since its inception, the only major motor home manufacturer to do so.



### Learn more about what sets Winnebago Industries apart.

Ask your dealer for this guide. It will help you learn what makes Winnebago Industries motor homes distinctly superior to other brands.



### Warning: Joining WIT has been known to cause excessive fun.

Winnebago-Itasca Travelers (WIT) is a club for owners of Winnebago Industries motor homes. WIT is a great way to meet people and offers you:

- Caravans and rallies
- Local and state group activities
- Benefits for RVers



## SuperStructure

is the term given to Winnebago Industries' structural motor home design and construction. Rather than a single component, it is the culmination of design integration that incorporates steel and aluminum substructures, composite design laminated floor risers, interlocking joint technology, and Thermo-Panel® floor, roof and sidewalls to form a high-strength, durable vehicle body.



**Interlocking joint construction** utilizes advanced extruded aluminum structural components to create integrated floor-to-sidewall, and sidewall-to-roof joints. This design effectively distributes the weight of the walls and roof, making a stronger and more durable body than competitor designs that rely on screws to carry the weight.

**Laminated risers** feature a welded aluminum core for superior strength and provide a stable base for the floor structure and storage compartments.

**The foundation substructure** assembly is precision-aligned to maximize strength and cross-coach support as well as durability.

**Windshields** are mounted in steel with non-hardening sealants for superior strength, safety and durability. Some manufacturers actually use a rubber gasket to hold the windshield to a fiberglass cap.

**A steel barrier** separates occupants from the engine compartment. Believe it or not, less advanced designs actually use wood in this critical application.

**Storage compartments** attach to outrigger assemblies so the weight of stowed items is carried and disbursed throughout the foundation substructure.

**Critical steel components** are treated using an advanced electrodeposition coating process that provides superior corrosion protection.

**The all steel cab** features integral A and B pillars for added strength and stability.

### Built to a higher standard.

Adventurer features a crowned, one-piece fiberglass roof backed with a 10-year limited parts-and-labor warranty. Fiberglass offers superior strength, attractiveness and durability over rubber roofs found on many competitive models. Over time, rubber roofs are susceptible to chalking, streaking and degradation, and have less puncture and tear resistance than fiberglass.



One-year-old competitor's rubber roof



One-year-old Winnebago Industries fiberglass roof



©2001 Winnebago Industries, Inc., Forest City, IA 50436. Printed in USA.

Seat belts are your most important hookup. Always buckle up.  
Visit us at [www.winnebagoind.com](http://www.winnebagoind.com)