



For those who demand more,
Journey and Journey DL answer the call.





36LD-Silver Brocade-Salem Cherry

Where convenience and luxury intersect.

Expand your living space at the touch of a button with the StoreMore® Slideout System. Premium Stitchcraft furniture adds comfort and durability and is available in leather for added luxury. In keeping with the functional beauty of the coach, the interior cabinetry is designed to optimize storage space and access to it. The doors and drawers also feature a catalyzed protective topcoat process which provides a highly durable, luxurious satin finish. Standard Journey DL galley and lounge upgrades include a microwave convection oven, large double-door refrigerator with icemaker and a standard dining table and chairs (not available on 32T and 32TD).

A diesel pusher like no other.

What will you experience as the proud owner of a 2002 Winnebago Journey or Journey DL? Exclusive innovative amenities, enhanced diesel pusher performance, and the comfort and value that you've come to expect in a Winnebago product.

Created to meet the needs of serious diesel pusher enthusiasts, these Journeys are packed with comfort-enhancing features. Front and rear bedroom slideouts, the new RV Radio™, TrueAir™ Residential Central Air Conditioning and premium Stitchcraft furniture to name a few.

The Freightliner® chassis features a powerful diesel engine; Allison electronically controlled transmission, and advanced air bag suspension systems for responsive driving and handling performance.

Available Journey features like a convection microwave oven and icemaker are standard on the Journey DL. Other Journey DL upgrades include a six-speed transmission, a 330 HP Cat engine (except 32TD), 10,000-pound drawbar and ceramic tile floorcovering in the bath and galley areas.

Whether you choose the Journey or the added amenities of the Journey DL, you'll enjoy the features and benefits that make the Journey line-up a family of truly distinguished diesel pusher motor homes.

It's all about choices.

Journey's variety of entertainment options begins with the 25" color TV, strategically positioned in a handsome wood-faced cabinet to provide great viewing angles from any seat in the house. The amplified antenna, video selection system, VCR and available digital satellite system let you select from network programming, movies or premium channels. Enjoy movie-theater-quality sound when you select the QSurround™ 5.1 sound system. For your convenience, the entertainment center cabinet doors have glass inserts, enabling remote control operation of the VCR with the cabinet doors closed.



36C-Imperial Beige

Superior interior climate comfort is maintained with floor-ducted, forced-air heating and ceiling-ducted TrueAir Residential Central Air Conditioning. Available dual-pane windows offer increased thermal efficiency while standard day/night pleated shades enable you to select from three levels of privacy.

Standard Journey DL entertainment features include a VCR and 300 watt inverter, which are optional on the Journey.



P R A C T I C A L F E A T U R E S F O R C A R E F R E E L I V I N G

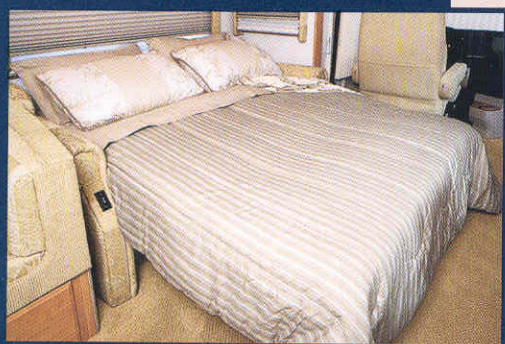
The Rest Easy™ Multi-Position Lounge offers seating flexibility and comfort.



It starts as a plush couch.



At the touch of a button, it becomes a relaxing recliner with pull-out ottoman.



Touch the button again and it's a comfortable, contoured 60" x 75" bed (not available on the 32T or 32TD).

Journey and Journey DL offer the flexibility in features and floorplans that experienced RVers desire. Exhibit A: the variety of available seating and dining arrangements.



Eat or sleep.

The dinette provides traditional seating for four and easily converts into additional sleeping space. Standard or available on all models.



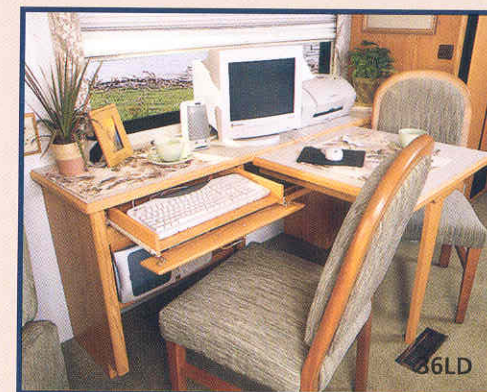
Just the two of you.

A banquette is a great place to relax and provides a cozy spot for two. Standard or available on select models.



For the King or Queen of the road.

The hoop-base lounge chair is a cozy rocker and a comfortable recliner with footrest. Best of all, it can be easily moved to your favorite spot when you're not traveling. Standard or available on all models.



Log on.

Choose the dining table for added flexibility. It doubles as a comfortable setting for writing and, while parked, is designed to readily accommodate a computer station. Available on select Journey DL models.



Two plus two.

The dining table provides spacious dining for two, but easily expands to accommodate four place settings for entertaining guests. Standard or available on most models.



Put it on ice.

A double-door refrigerator with icemaker and pull-out pantry cabinet are standard. Select the available four-door refrigerator for even more cold storage capacity.



And the kitchen sink.

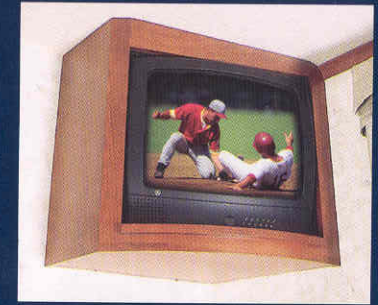
The Journey DL's galley is further enhanced with a Swanstone® solid surface double-bowl molded sink which easily accommodates larger items. It also features a single-control faucet and a separate faucet for the Everpure® water purification system.



36LD

Compliments to the chef.

The galley in the Journey DL features solid surface countertops, ceramic tile floorcovering, recessed fluorescent lighting and a microwave convection oven.



And in this corner.

The built-in, 19" rear bedroom TV is corner-mounted for optimum viewing.



Bathe yourself in comfort.

A skylight lends a spacious feel to the bath area. Upscale features include a residential-height porcelain toilet, molded sink and single-control brass faucet. Enjoy plenty of hot water thanks to the 10-gallon water heater with Motoraid, that operates on LP or 110-volt electrical. The linen cabinet offers abundant storage space. Standard Journey DL bath upgrades include a solid surface countertop and ceramic tile floor.



At your convenience.

The available built-in, combination washer/dryer features multiple wash, time and temperature cycles for a wide variety of fabrics (not available on 32T or 32TD).



Plugged in.

A Black and Decker® rechargeable flashlight and vacuum are conveniently located so you won't be caught in the dark and you'll always be ready for a quick cleanup. In the bathroom, the wall-mounted hair dryer has a convenient night-light.



36LD-Silver Brocade

Sweet dreams.

The standard rear bedroom slideout comes with a walk-around queen-size bed, Serta® mattress and underbed storage. The spacious built-in wardrobe features large drawers and plenty of hanging storage space.



Take a load off.

High-back, custom-designed, Stitchcraft driver and passenger cab seats provide a perfect fit with adjustable lumbar support. Popular upgrades include leather, six-way power assist and this convenient footrest for the passenger seat.



Spread the cool around.

Interior climate control has never been more precise, thanks to Winnebago Industries TrueAir Residential Central Air Conditioning. It utilizes superior cooling technology to supply optimum comfort to every part of the coach. At the heart of the system is a Coleman®-Mach® cooling unit, which is located below the floor line of the coach. The unit provides a lower vehicle profile and center of gravity, plus reduced interior noise and an easier access for service. On cool days, the available heat pump provides heat, minimizing the need to use LP.



Power manager.

Keep your electrical system running smoothly, even when operating your central air conditioning on a 30-amp shoreline, with the PowerLine™ Energy Management System. It monitors onboard electrical usage and automatically minimizes the nuisance of campground circuit breaker tripping by controlling the operation of "postponable" electrical loads when demand peaks during heavy power usage. As demand is lowered, PowerLine automatically returns power to the secondary appliances and systems.



One look.

The OnePlace™ Systems Center places vital switches, gauges, levels and controls in one convenient location, so you can check them at a glance.



Everything's right there.

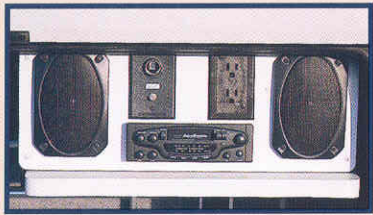
You're in command because the cockpit-style dash places precision driving controls at your fingertips. The steering wheel is sized for responsive handling and features tilt and telescoping functions. The electronic transmission controls and engine exhaust brake are located on the left side driver's panel for easy visual reference and operation. Get your bearings or the outside temperature with the electronic compass/thermometer. A dash-mounted rearview monitor simplifies backing and maneuvering. Standard Journey DL cab upgrades include the sliding passenger window with screen, and the rearview monitor (also offered as an available option on Journey).



Designed exclusively for RV use.

RV•RADIO

Winnebago Industries' engineers worked closely with the radio manufacturer to create the RV Radio—a radio designed specifically for motor home applications. Journey's AM/FM stereo radio has a cassette and CD player. Large control knobs and buttons are easy to operate. A weather band feature provides weather updates at the touch of a button.



The party starts here.

Listen to your favorite music outdoors under the awning with the exterior entertainment center. A standard feature, it includes two speakers, a 12-volt power supply, TV jack and a patio table. Choose the standard AM/FM stereo with cassette or available CD.



Rain, rain go away.

A rain gutter incorporated into the awning rail channels condensation and rainwater runoff away from the door and windows.



You've got power.

Enjoy electrical power wherever your travels take you with the standard LP-powered 6,500 watt Onan® Marquis Gold™ generator. A 7,500 watt Onan Quiet Diesel™ generator is also available on both the Journey and Journey DL.



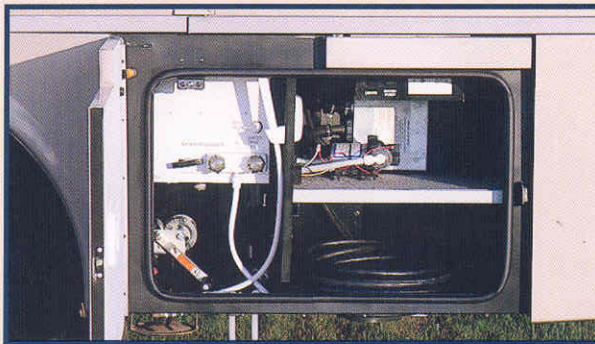
These mirrors don't miss a thing.

Both Journey and Journey DL feature exterior mirrors with increased surface area. But that's only part of the story. The mirror mounting positions were designed (after extensive research) to provide the best viewing angle. The result is exterior mirrors with a greater field of vision.



One Key.

Open almost everything with one key thanks to the innovative KeyOne™ lock system. A single, double-bitted key opens most exterior compartments and doors so you won't have to fumble through a pocket full of keys.



It's right in front of you.

Service center features are user friendly with easy access and clearly labeled controls. The exterior wash station is handy for rinsing off equipment or sandy feet.

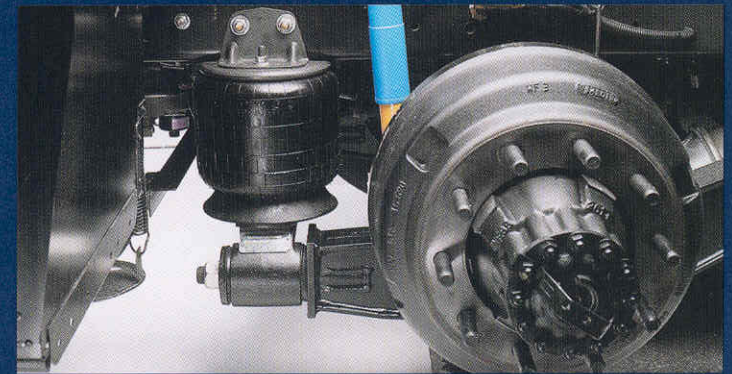
Journey



STOREMORE

Give your back a break.

StoreMore features large, well-lit exterior storage compartments that are designed to accommodate bulky and odd-shaped items. Best of all, these compartments extend along with the slideroom for easy access without crawling under the slideroom. The exterior compartment doors open easily thanks to single-paddle latches and gas struts.



Floating on air.

The rear air suspension places larger air springs in a wide-track stance just inboard of the rear wheels. More efficient than less advanced multiple smallbag systems, it offers optimum stability while protecting the air springs from road debris kicked up by the tires. The air spring cushions the vehicle body from the travel movement of the rear axle. As the axle moves in relation to the coach, air pressure is automatically released or introduced to the air spring to maintain the proper ride height. A high volume "ping" tank provides a reserve capacity of compressed air that enables the system to respond instantaneously.

High-mounted air intake.

The fresh air intake for the engine is positioned high on the sidewall to prevent road dust and grime from being introduced to the engine air supply. This prolongs filter life and increases engine performance.

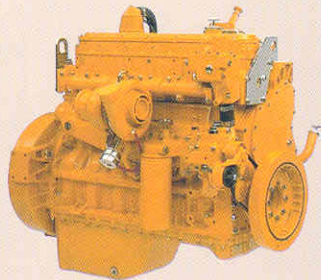
No gymnastics required.

The air filter and fluid level checkpoints are in easy-to-reach locations.



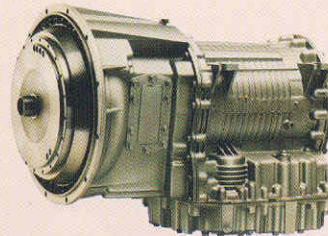
Easy maintenance.

Draining airline system condensation is a recommended service procedure on all vehicles that utilize air brakes and air suspension. Journey and Journey DL have automatic system dryers and heated air system drains that incorporate remote lanyard controls. This eliminates the need to crawl under the chassis to perform this routine maintenance function.



More than enough horses.

Rugged diesel power provides exceptional torque and economy. Engine offerings all include advanced electronic controls for superior performance and fuel economy. They include a 275-horsepower ISB 5.9L Cummins® engine on Journey, a 300-horsepower ISB 5.9L Cummins in the Journey DL 32TD and a 330-horsepower CFE 7.2L Caterpillar® engine (shown here) in all other Journey DL models. The standard engine exhaust brake enables you to use the engine to slow the vehicle, promoting longer brake life.



These gears adjust to yours.

The Allison® electronic control transmission is a proven performer. Smart logic enables it to "learn" your driving habits and fine-tune shift points accordingly for maximum performance. A 2000 MH five-speed transmission is standard on Journey while a 3000 MH six-speed is standard on Journey DL.



Stopping power.

Journey and Journey DL feature anti-lock air brakes. Enjoy maximum brake feel and control thanks to the treadle foot-brake pedal mounted solidly to the steel cab deck.

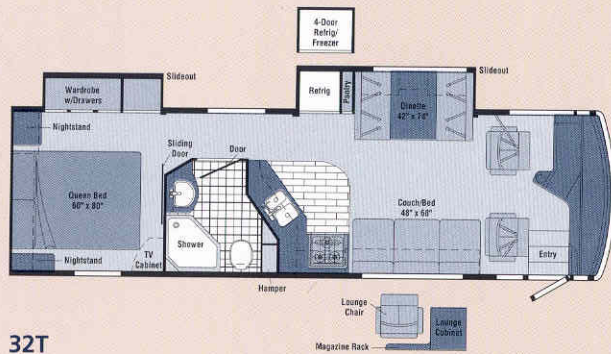
Built to last.

When purchasing a new motor home, you may think that a chassis is a chassis is a chassis. But the chassis your RV is built on has a crucial impact on your overall experience. When it comes to a chassis, the manufacturer's history of design innovation with a proven track record of performance and a nationwide service network are significant factors to consider.

The Winnebago Journey and Winnebago Journey DL are exclusively offered on a Freightliner chassis, specifically designed and created for their intended RV application. Freightliner has a well-known reputation for providing top-quality chassis and vehicles. This reputation and expertise is evident as you take the wheel of a Journey or Journey DL and experience the driving comfort, responsive handling and smooth ride. On top of that, you'll have access to a network of over 350 Freightliner chassis service centers, many open 24 hours a day, seven days a week.

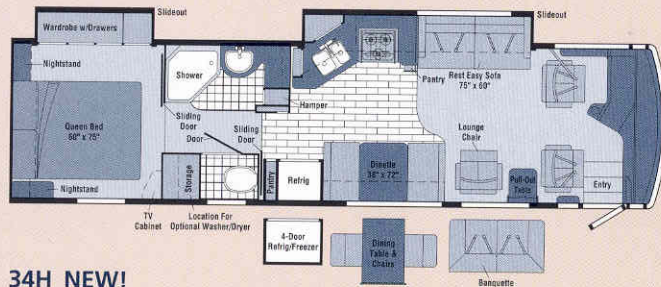


A Subsidiary of **FREIGHTLINER**
CORPORATION



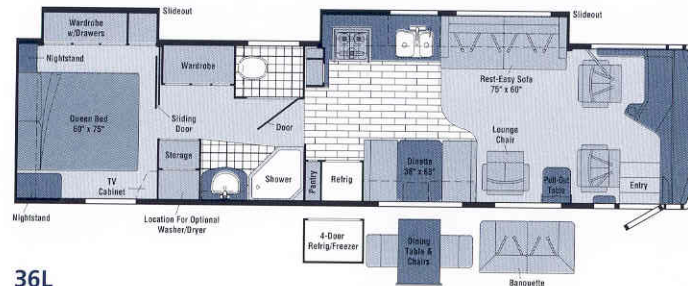
32T

- Dinette/refrigerator **STOREMORE** Slideout System
- Bedroom wardrobe slideout
- Large private bath area
- Available moveable hoop-base lounge chair



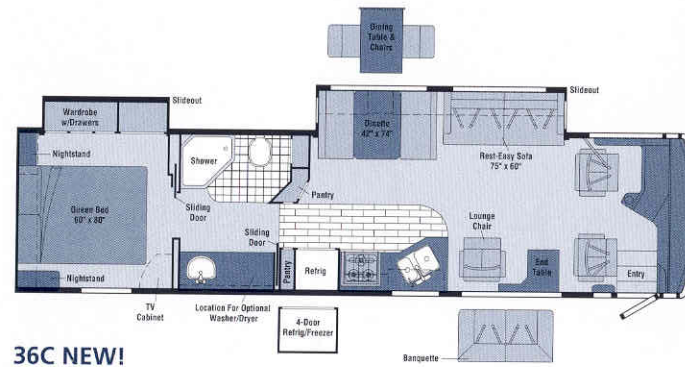
34H NEW!
Available October 2001

- Sofa/galley **STOREMORE** Slideout System
- Bedroom wardrobe slideout
- Split bath design with private toilet area
- Moveable hoop-base lounge chair
- **Reor Easy** Multi-Position Lounge



36L

- Sofa/galley **STOREMORE** Slideout System
- Bedroom wardrobe slideout
- Moveable hoop-base lounge chair
- **Reor Easy** Multi-Position Lounge



36C NEW!

- Sofa/dinette **STOREMORE** Slideout System
- Bedroom wardrobe slideout
- Moveable hoop-base lounge chair
- **Reor Easy** Multi-Position Lounge



Stonegate



Imperial Beige



Cottage Blue



Portsmouth Oak



Vinyl Floorcovering

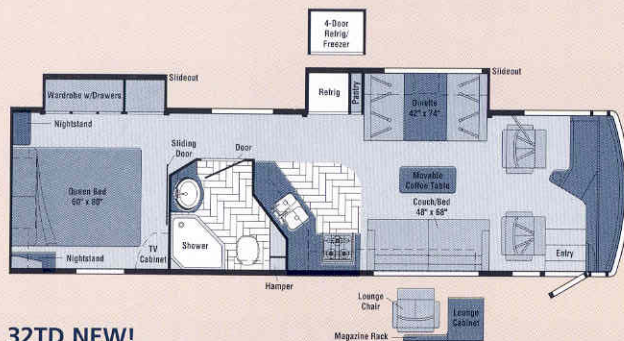


Woodgrain Vinyl Plank Floorcovering



Seat Belts

Note: Dimensions shown are for sleeping space only and dashed lines denote overhead storage areas.



32TD NEW!

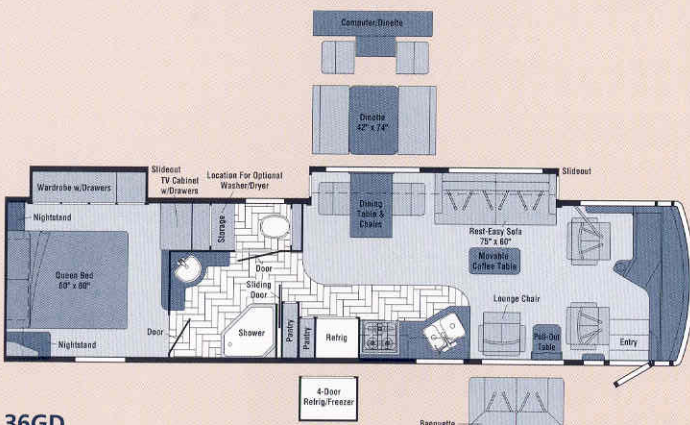
- Dinette/refrigerator **STOREMORE** Slideout System
- Bedroom wardrobe slideout
- Large private bath area
- Available moveable hoop-base lounge chair



34HD NEW!

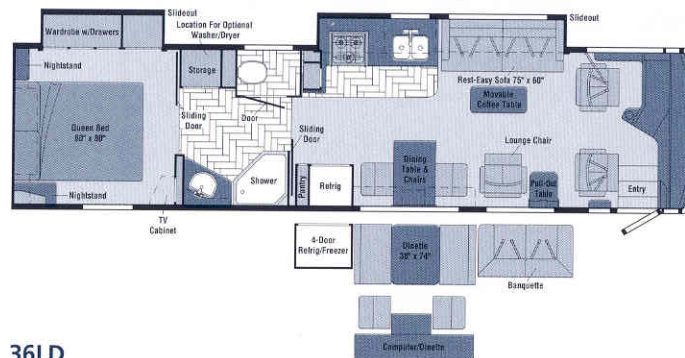
Available November 2001

- Sofa/galley **STOREMORE** Slideout System
- Bedroom wardrobe slideout
- Split bath design w/private toilet area
- Moveable hoop-base lounge chair
- **Keeler Easy** Multi-Position Lounge



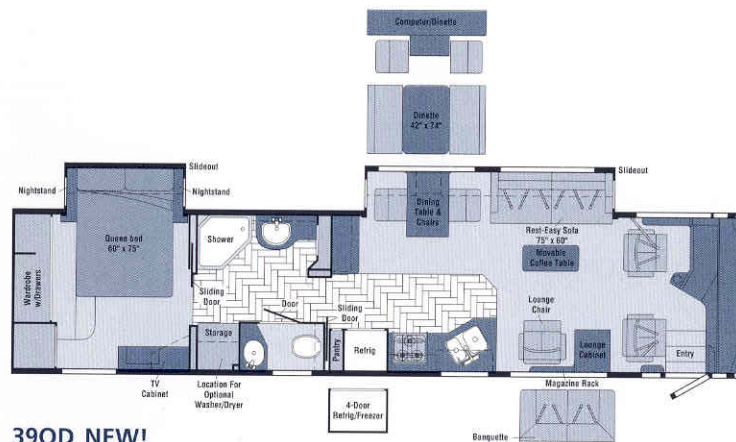
36GD

- Sofa/dining table **STOREMORE** Slideout System
- Bedroom wardrobe slideout
- Available computer/dining table (feature pending)
- Large bath area w/private toilet area
- **Keeler Easy** Multi-Position Lounge



36LD

- Sofa/galley **STOREMORE** Slideout System
- Bedroom wardrobe slideout
- Available computer/dining table
- Movable hoop-base lounge chair
- **Keeler Easy** Multi-Position Lounge



39QD NEW!

Available December 2001

- Sofa/dining table **STOREMORE** Slideout System
- Bed slideout w/large rear wardrobe
- Available computer/dining table (feature pending)
- **Keeler Easy** Multi-Position Lounge



Saratoga



Venice Green



Silver Brocade



Salem Cherry



Portsmouth Oak



Ceramic Tile Floorcovering



Seat Belts



The outside story.

Journey's one-piece fiberglass sidewall is amazingly tough—typical for Winnebago Industries design. Laterally mounted floor risers allow for true basement storage. Also available: hydraulic jacks to keep your Journey super-stable and level when parked, and stainless steel wheel liners, to resist corrosion over the long haul.

SPECIFICATIONS

| | JOURNEY | | | | JOURNEY DL | | | | |
|---|---------|---------|--------|---------|------------|----------|---------|---------|----------|
| | 32T | NEW 34H | 36L | NEW 36C | NEW 32TD | NEW 34HD | 36GD | 36LD | NEW 39QD |
| Length | 32'8" | 34'9" | 36'5" | 36'5" | 32'8" | 34'9" | 36'5" | 36'5" | 39'4" |
| Exterior Height* | 12' | 12'1" | 12' | 12'1" | 12' | 12'1" | 12'1" | 12' | 12'1" |
| Exterior Width ^Δ | 8'5.5" | 8'5.5" | 8'5.5" | 8'5.5" | 8'5.5" | 8'5.5" | 8'5.5" | 8'5.5" | 8'5.5" |
| Exterior Storage (cu. ft.) [◊] | 82 | 92 | 120 | 106 | 82 | 92 | 107 | 116 | 136 |
| Interior Height | 6'8" | 6'8" | 6'8" | 6'8" | 6'8" | 6'8" | 6'8" | 6'8" | 6'8" |
| Interior Width | 8'0.5" | 8'0.5" | 8'0.5" | 8'0.5" | 8'0.5" | 8'0.5" | 8'0.5" | 8'0.5" | 8'0.5" |
| Fresh Water Capacity w/Heater* (gal.) | 96 | 96 | 96 | 96 | 96 | 96 | 96 | 96 | 96 |
| Holding Tank Capacity - Black/Gray (gal.) | 52/42 | 48/52 | 48/52 | 48/52 | 52/42 | 48/52 | 52/48 | 48/52 | 52/48 |
| LP Capacity [∇] (gal.) | 39 | 39 | 39 | 39 | 39 | 39 | 39 | 39 | 39 |
| Fuel Capacity (gal.) | 90 | 90 | 90 | 90 | 90 | 90 | 90 | 90 | 90 |
| GCWR (lbs.) | 28,000 | 28,000 | 28,000 | 28,000 | 36,850* | 36,850* | 36,850* | 36,850* | 36,850* |
| GVWR (lbs.) | 24,350 | 24,350 | 24,350 | 24,350 | 26,850 | 26,850 | 26,850 | 26,850 | 26,850 |
| GAWR - Front (lbs.) | 9,350 | 9,350 | 9,350 | 9,350 | 9,350 | 9,350 | 9,350 | 9,350 | 9,350 |
| GAWR - Rear (lbs.) | 15,000 | 15,000 | 15,000 | 15,000 | 17,500 | 17,500 | 17,500 | 17,500 | 17,500 |
| Wheelbase | 190" | 208" | 228" | 228" | 190" | 208" | 228" | 228" | 262" |

Standard - S Optional - O

AUTOMOTIVE/CHASSIS

| | JOURNEY | | | | JOURNEY DL | | | | |
|---|---------|-----|-----|-----|------------|------|------|------|------|
| | 32T | 34H | 36L | 36C | 32TD | 34HD | 36GD | 36LD | 39QD |
| Chassis - Freightliner, Cummins® ISB 5.9L turbo charged diesel 275 HP, rear radiator, Allison 5-speed electronic 2000 MH transmission & I-beam front suspension, air suspension, air brakes, exhaust brake, 4-wheel ABS | S | S | S | S | | | | | |
| Chassis - Freightliner, Cummins ISB 5.9L turbo charged diesel 300 HP, rear radiator, Allison 6-speed electronic 3000 MH transmission & I-beam front suspension, air suspension, air brakes, exhaust brake, 4-wheel ABS | | | | | | S | | | |
| Chassis - Freightliner, Caterpillar® 7.2L turbo charged diesel 330 HP, rear radiator, Allison 6-speed electronic 3000 MH transmission & I-beam front suspension, air suspension, air brakes, exhaust brake, 4-wheel ABS, Exhaust Catalyst | | | | | | | S | S | S |
| Leveling Jacks hydraulic, manual touch pad w/indicator lights, Tire Tool(s) wrench & leverage bar, Trailer Hitch 5,000-lb./10,000-lb. (†Journey DL only) draw bar/500-lb. maximum vertical tongue weight & wiring [□] Wheel Liners stainless steel | S | S | S | S | S | S | S | S | S |
| Wheels stylized aluminum | O | O | O | O | O | O | O | O | O |

CAB AREA & DRIVER CONVENIENCES

| | 32T | 34H | 36L | 36C | 32TD | 34HD | 36GD | 36LD | 39QD |
|---|-----|-----|-----|-----|------|------|------|------|------|
| Cab Seats (fabric) w/3-point adjustable seat belts, armrests, multi-adjustable slide/recline & swivel, Cigarette Lighter/12-Volt Electrical Supply, Compass electronic w/outdoor thermometer, Console Center Cabinet, Cruise Control, Exhaust Brake Switch, Floor Mat carpet driver, Headlight Control Switch, Hood Release, Map Lights, Shades light filtering, cab windows, Steering Wheel tilt w/power assist, Sunvisors (2), Window (driver) full slider w/screen, Windshield Wipers intermittent | S | S | S | S | S | S | S | S | S |
| Cab Seat 6-way power assist (driver), Cab Seats leather seating surface surround, Cab Seat* passenger seat w/footrest, Cab Seats* 6-way power assist (driver & passenger) | O | O | O | O | O | O | O | O | O |

Standard - S Optional - O

| | JOURNEY | | | | JOURNEY DL | | | | |
|--|---------|-----|-----|-----|------------|------|------|------|------|
| | 32T | 34H | 36L | 36C | 32TD | 34HD | 36GD | 36LD | 39QD |
| Defroster Fans (2) auxiliary 2-speed w/instrument panel switch, Monitor System rearview w/single camera & 1-way audio, Sony* | O | O | O | O | S | S | S | S | S |
| Spotlight roof mounted w/wireless remote | | | | | | | | O | O |
| Window (passenger) fixed, dual-glazed | S | S | S | S | | | | | |
| Window (passenger) partial slider w/screen, dual-glazed | | | | | S | S | S | S | S |

ENTERTAINMENT

| | 32T | 34H | 36L | 36C | 32TD | 34HD | 36GD | 36LD | 39QD |
|---|-----|-----|-----|-----|------|------|------|------|------|
| CB Prep (includes: antenna, antenna lead, 12-volt power supply), Entertainment Center (Exterior) w/Cassette DC receptacle, AC duplex receptacle, AM/FM radio, TV jack, radio antenna, speakers (2), table, lockable compartment, 36L/36C (Cab) AM/FM stereo cassette/CD , roof-mounted flexible rubber antenna, speakers (4), weather band, Radio Power Switch main/auxiliary battery, Satellite System Ready , Telephone input & interior jacks, TV 19" Color AC w/remote , bedroom, TV 25" Color AC w/remote , TV Enhancement Package antenna (amplified), interior jack(s), coax wiring, cable input, exterior jack, reminder light, Video Selection System | S | S | S | S | S | S | S | S | S |
| CD Holder | | | | | S | S | S | S | S |
| Compact Multi-disc Changer Sony® Entertainment Center (Exterior) w/CD Player DC receptacle, AC duplex receptacle, AM/FM radio, TV jack, radio antenna, speakers (2), lockable compartment, table, Satellite Dish Antenna Winegard® RV digital, elevation sensing unit, Sound System deluxe , w/Q Surround 5.1 Sound, TV 25" stereo color AC, stereo VCR, amplifier, cube speakers (5), bass speakers (2) | O | O | O | O | O | O | O | O | O |
| Stereo System (Bedroom)* AM/FM cassette, alarm clock | | | | | O | O | O | O | O |
| Stereo System (Bedroom)* AM/FM CD player, alarm clock | | | | | | | | | |
| VCR w/remote* | O | O | O | O | S | S | S | S | S |

INTERIOR

| | 32T | 34H | 36L | 36C | 32TD | 34HD | 36GD | 36LD | 39QD |
|--|-----|-----|-----|-----|------|------|------|------|------|
| Ceiling textured fabric, Curtain front wraparound, pleated w/wands, Light wall lamp, Lights ceiling, incandescent, Lights fluorescent lights, recessed, galley, dinette, lounge w/2-way wall switches, Lights reading, Shades pleated, day/night | S | S | S | S | S | S | S | S | S |
| Accessory Package rechargeable flashlight, rechargeable hand-held vacuum cleaner | O | O | O | O | S | S | S | S | S |
| Cupholder(s) | S | S | S | S | S | S | S | S | S |
| Mirror | S | S | S | S | S | S | S | S | S |
| Picture | S | S | S | S | S | S | S | S | S |
| Windows dual-glazed/thermo-insulated | O | O | O | O | O | O | O | O | O |

CABINETS

| | 32T | 34H | 36L | 36C | 32TD | 34HD | 36GD | 36LD | 39QD |
|--|-----|-----|-----|-----|------|------|------|------|------|
| Woodgrain Portsmouth Oak stile-and-rail construction w/raised panel inserts | S | S | S | S | S | S | S | S | S |
| Woodgrain Salem Cherry stile-and-rail construction w/wood raised panel inserts | | | | | O | O | O | O | O |

COUNTERTOPS

| | 32T | 34H | 36L | 36C | 32TD | 34HD | 36GD | 36LD | 39QD |
|---|-----|-----|-----|-----|------|------|------|------|------|
| Solid Surface galley | S | S | S | S | S | S | S | S | S |
| Solid Surface bath | O | O | O | O | S | S | S | S | S |
| Laminate dinette, bedroom & bath w/wood-look edge | S | S | S | S | | | | | |
| Laminate dinette & bedroom w/wood edge | | | | | S | S | S | S | S |

FLOORCOVERING

| | 32T | 34H | 36L | 36C | 32TD | 34HD | 36GD | 36LD | 39QD |
|--|-----|-----|-----|-----|------|------|------|------|------|
| Carpeting w/pad | S | S | S | S | S | S | S | S | S |
| Ceramic Tile galley & bath | | | | | S | S | S | S | S |
| Vinyl bath, Vinyl Woodgrain Plank galley | S | S | S | S | | | | | |

Not all motor homes are created equal.

As you take a closer look, you'll see that there is much more to the Winnebago Journey than a long list of standard features and compelling floorplans. Beneath it all you'll find a SuperStructure™ foundation of strength and durability, and Winnebago Industries' recognized service and warranty support.

We are committed to service.

We back our motor homes with the best after-the-sale service in the industry.

- 12-month/15,000-mile basic limited warranty
- 36-month/36,000-mile warranty on structure
- Standard 10-year limited parts-and-labor roof warranty
- Complimentary 24-hour Roadside Assistance Program
- TripSaver emergency warranty parts shipments
- National Dealer service network



Certified quality.

Recreation Vehicle Dealer Association members annually rate RV manufacturers on the quality of their products, and on their sales and service support. Winnebago Industries has achieved the coveted Quality Circle award every year since its inception, the only major motor home manufacturer to do so.

Learn more about what sets Winnebago Industries apart.

Ask your dealer for this guide. It will help you learn what makes Winnebago Industries motor homes distinctly superior to other brands.

Warning: Joining WIT has been known to cause excessive fun.

Winnebago-Itasca Travelers (WIT) is a club for owners of Winnebago Industries motor homes. WIT is a great way to meet people and offers you:

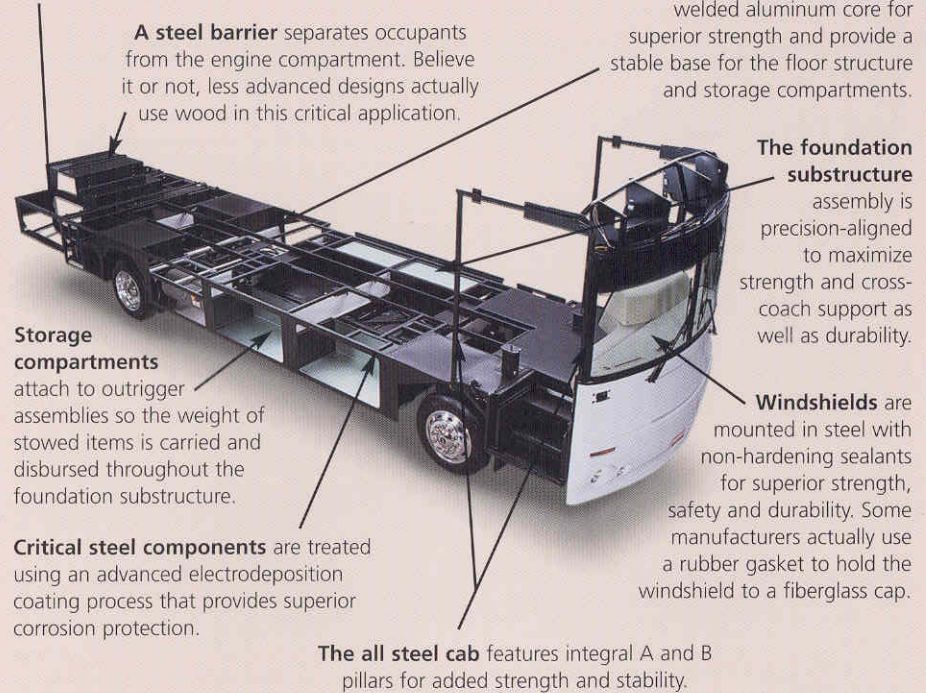
- Caravans and rallies
- Local and state group activities
- Benefits for RVers

SuperStructure

is the term given to Winnebago Industries' structural motor home design and construction. Rather than a single component, it is the culmination of design integration that incorporates steel and aluminum substructures, composite design laminated floor risers, interlocking joint technology, and Thermo-Panel® floor, roof and sidewalls to form a high-strength, durable vehicle body.



Interlocking joint construction utilizes advanced extruded aluminum structural components to create integrated floor-to-sidewall, and sidewall-to-roof joints. This design effectively distributes the weight of the walls and roof, making a stronger and more durable body than competitor designs that rely on screws to carry the weight.



Built to a higher standard.

Journey features a crowned, one-piece fiberglass roof backed with a 10-year limited parts-and-labor warranty. Fiberglass offers superior strength, attractiveness and durability over rubber roofs found on many competitive models. Over time, rubber roofs are susceptible to chalking, streaking and degradation, and have less puncture and tear resistance than fiberglass.



One-year-old competitor's rubber roof



One-year-old Winnebago Industries fiberglass roof



© 2001 Winnebago Industries, Inc., Forest City, IA 50436. Printed in USA.

Seat belts are your most important hookup. Always buckle up.
Visit us at www.winnebagoind.com