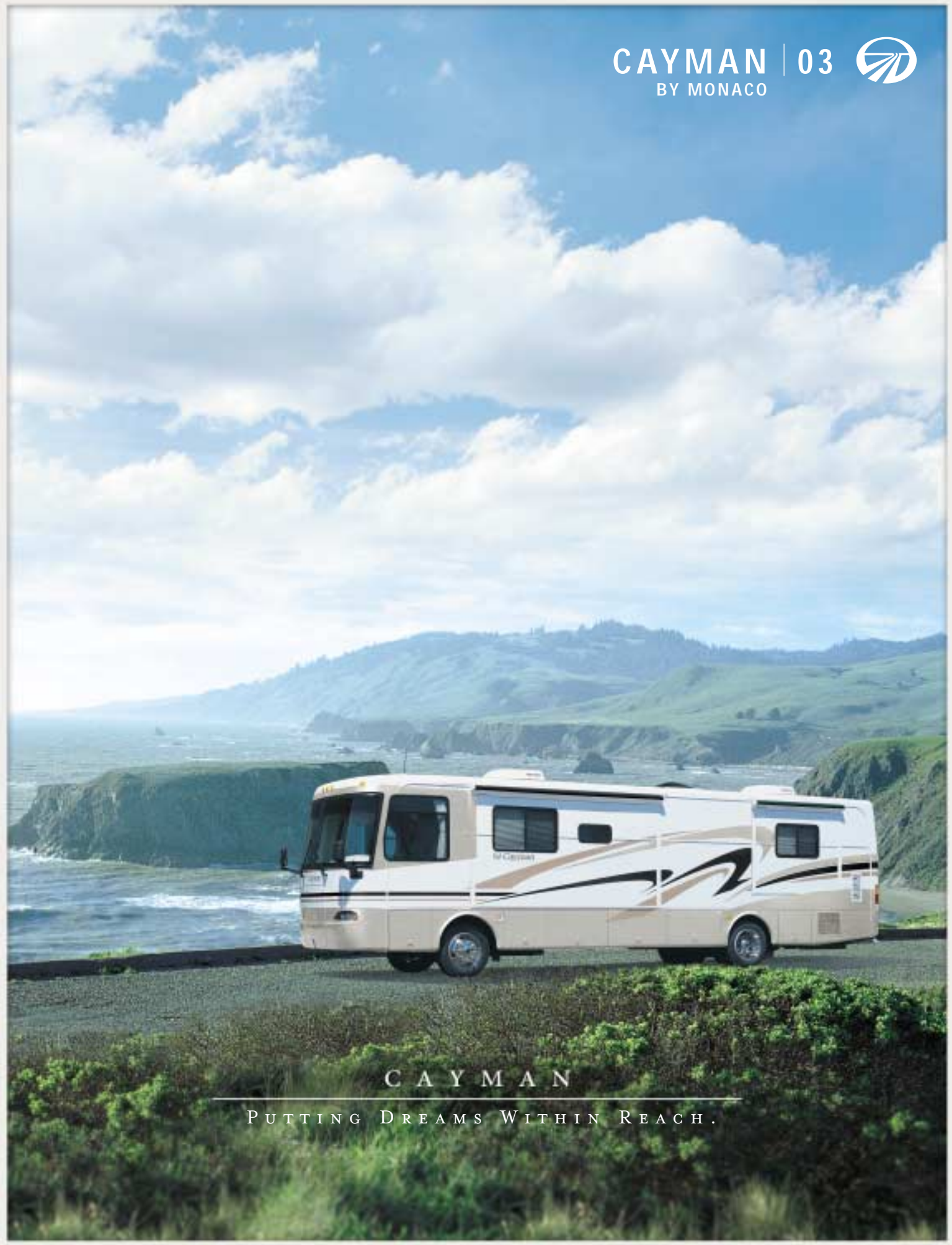


CAYMAN | 03 
BY MONACO



CAYMAN

PUTTING DREAMS WITHIN REACH.

DESIGNED FOR THOSE
WHO DREAM IN DIESEL.



This could be the year it all comes true. Stepping up into the prestige of a diesel coach. Experiencing the unmatched luxury of a Monaco. The remarkable value of the 2003 Cayman puts it all nicely within reach. Just think, you'll be at the helm of a Roadmaster R4R-Series with a Cummins® 300 HP engine and Allison® 2000 MH automatic 5-speed transmission. And inside the coach, you'll enjoy a long list of luxuries, including a large double-door refrigerator, optional Soft Touch vinyl furnishings, a 25" TV with optional DVD player, and solid wood square raised panel doors to name just a few. So take a closer look around. And take your first step towards waking up in a brand new Cayman from Monaco.

 C A Y M A N



WORKS FOR HER.

The booth dinette's storage drawers make the perfect place to store napkins and table linens.



Of course, they also work for spare golf balls or fishing tackle, as well as magazines or the TV schedule.

WORKS FOR HIM.

Lavender Mist / 34PDD / Western Oak

WHERE LUXURY
MEETS VALUE.
MONACO STYLE.

There's no doubt about it — Monaco puts the "style" in the RV lifestyle. The 2003 Cayman features three stunning interior decors, each with coordinating fabrics, pillows and window treatments. You have your choice of a wide range of furnishings, including a recliner, jack knife sofa, and electric sofa — all in plush fabric or optional Soft Touch vinyl. And for your entertainment, you'll enjoy the large 25" stereo color TV and the optional VCR, DVD player, or home theater system with DVD player. The Cayman is also prepped for cable TV and a digital satellite system.

Lavender Mist / 34PDD / Western Oak

The arched back booth dinette is designed for both comfort and convenience and houses these built-in storage drawers.



YOUR ROOM IS READY.
AND ONLY 20 FEET AWAY.



The attractive bathroom features cosmetic vanity lights, a medicine cabinet with shelves, a one-piece shower, and a glass shower door with brass frame. In addition, the 30PBD and 36PBD offer the option of a bathtub.

Lavender Mist / 34PDD / Western Oak



Lavender Mist / 34PDD / Western Oak



The galley is loaded with features, including a pantry with adjustable shelves and a handy countertop extension, available on most models. The exquisite cabinetry comes in four finishes, with solid wood raised panel doors and brass finished hardware.

Wherever you go, the comforts of home are right behind you, thanks to the style and roomy efficiency of the Cayman's bedroom. You'll find an oversized wardrobe with mirrors (on most floorplans) and plenty of closets and overhead cabinets. Select floorplans also feature a large dresser with a laminate top edged in wood. And for the ultimate convenience, some models offer an optional combination washer/dryer.

NEVER BE ROAD
WEARY AGAIN.

The Cayman's luxurious cockpit is designed for your maximum comfort, both while driving and resting. It features Soft Touch vinyl pilot and co-pilot seats, with optional six-way power pilot seat controls. You'll find many advanced amenities, including a rear vision system with audio, power heated remote exterior mirrors, and optional power sunvisors. In addition, to accommodate drivers of all sizes.



Lavender Mist / 34PDD / Western Oak



The coach comes standard with an acrylic patio awning and topper slide-out awnings, and you also have the option of a front door awning.

Controlling all the coach's systems, like slide-outs and air conditioning, is a snap with this systems control panel. An optional energy management system is also located here, to heighten the energy efficiency of the coach.



THE PERFECT MARRIAGE
OF FORM AND FUNCTION.



Unlike many manufacturers, Monaco utilizes the same high-quality multi-layer sidewall and roof design in the slide-out construction. This enhances the performance and insulation of the slide-outs and reduces the chance for twisting, warping and shifting.



NEW ROADMASTER
WARRANTY

We're excited to announce the new 3-year/36,000-mile Roadmaster Chassis Warranty. See owner's manual for complete details.



There is plenty of room for all your luggage and equipment, thanks to the one-piece pass-through storage compartment with single-handle door latches.

The stylish exterior is equaled by its superb functionality and attention to detail. Highlights include the front and rear molded fiberglass caps, smooth aluminum exterior walls (or optional smooth fiberglass sidewalls), a peaked aluminum roof with fiberglass insulation, wheel mud flaps, and a rear ladder.

2003 EXTERIOR COLORS, FABRICS AND WOODS

For 2003, our designers have selected exquisite fabric combinations for each model of the Cayman. Now, it's *your* turn to choose.

Autumn Haze Oak



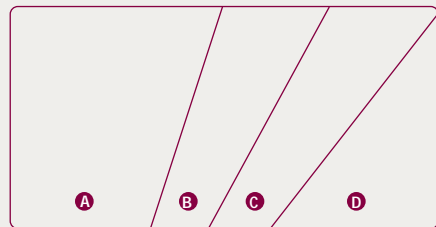
Regal Cherry



Maple



Walnut



- A. Sofa
- B. Carpet
- C. Bedspring
- D. Freestanding Dinette Chairs

Note: While the color of the motorhome's exterior and the interior fabrics shown in this sales brochure are fair and reasonable depictions, they may not be an exact match of the actual colors. In addition, the consistency of the wood grains may vary.

LAVENDER MIST



COBBLESTONE



OXFORD BLUE



2003 SPECIFICATIONS, STANDARDS AND OPTIONS

www.monacocoach.com
To keep current on product news and updates, log on to monacocoach.com.

WEIGHT RATING (LBS.)	30PBD	32PBD	34PDD	36PBD
Gross Vehicle	24,000	24,000	24,000	24,000
Gross Combined	28,000	28,000	28,000	28,000
Front Gross Axle	8,500	8,500	8,500	8,500
Rear Gross Axle	15,500	15,500	15,500	15,500

MEASUREMENTS

Wheelbase	160"	184"	204"	228"
Overall Length	30' 11"	32' 4"	34' 4"	36' 4"
Overall Height (with A/C)	11' 9"	11' 9"	11' 9"	11' 9"
Interior Height	6' 6"	6' 6"	6' 6"	6' 6"
Interior Width	94 1/2"	94 1/2"	94 1/2"	94 1/2"
Exterior Width	100 1/2"	100 1/2"	100 1/2"	100 1/2"

TANK CAPACITY (GAL.) All tank capacities are estimated based upon calculations provided by the tank manufacturers and represent approximate capacities. The actual "usable capacity" may be greater or less than the estimated capacities based upon fabrication and installation of the tanks.

Water Heater	6	6	6	6
Gray Tank	52	52	52	52
Black Tank	52	52	52	52
Fresh Tank	92	92	92	92
LP Tank ¹	31	38	38	38
Fuel Tank	75	75	75	75

¹ Actual filled LP capacity is 80% of listing due to safety shut-off required on tank.

BODY CONSTRUCTION

Alumaframe® Superstructure	Laminated Structurwood™ Flooring	One-Piece Polyethylene Pass-Through Storage Compartment
Steel Cage Construction	Air Activated Power Step Well Cover	Exterior Vinyl Graphics
Peaked Aluminum Roof with Fiberglass Insulation	Interior Paneling with 3/4" Insulation	Wheel Mud Flaps
Smooth Aluminum Exterior Walls	Foam Insulation Underbelly with Luaun Backer	Rear Ladder
Front & Rear Molded Fiberglass Cap	Power Heated Remote Exterior Mirrors	
Engine Doors Struts	Baggage Doors with Integrated Single Handle Latches	
Angled Fiberglass Engine Cover		
Steel Framed Floor		

OPTIONS

Smooth Fiberglass Sidewalls

COCKPIT

Fiberglass Automotive Dash with Carbon Fiber Instrumentation Panel	Cruise Control
CD Player/Radio with Four Speakers	Power Steering
Multi-Positioned Sunvisors	Electric Automotive Horn
Rear Vision System with Audio	Drink Holder
Intermittent Windshield Wipers	Soft Touch Vinyl Pilot and Co-Pilot Seat
Tilt/Telescoping Steering Wheel	

OPTIONS

Six-Way Power Pilot Seat
Power Sunvisors

2003 SPECIFICATIONS, STANDARDS AND OPTIONS

APPLIANCES AND ACCESSORIES

Large Double-Door Refrigerator	VCR Prep and Video Control Box with Dual Hook-Ups for DSS and Cable
High-Output 3-Burner Cooktop	Cable TV Hook-Up and Telephone Jacks
Spacesaver Microwave	
25" Stereo Color TV with Remote in Living Area	
TV Antenna with Booster with TV Jacks	
Pre-Wire for Bedroom TV	

OPTIONS

Large Double-Door Refrigerator with Ice Maker	Washer/Dryer Prep (N/A: 30PBD, 32PBD)
High Output Three-Burner Range with Oven	Combination Washer/Dryer (N/A: 30PBD, 32PBD)
Convection Microwave	Home Theater System with DVD Player
19" Stereo Color TV with Remote in Bedroom	Sirius Satellite Radio System (Upgrade Radio to Sirius Compatible Unit) (Requires Subscription)
VCR	
DVD Player	

INTERIOR

Autumn Haze Oak Cabinetry	Kitchen Countertop Extension (30PBD, 32PBD, 34PDD)	Bathroom Mirror
Solid Wood Square Raised Panel Doors on Overhead Cabinets	Laminate Bathroom Countertop with Wood Edge	Towel Bars and Towel Rings in Bathroom
Flat Panel Hardwood Doors on Base Cabinet	Kitchen Pantry with Adjustable Shelves (N/A: 30PBD, 32PBD)	Queen Bed with Shirt Closets and Nightstands
Telestrut Overhead Storage Doors and Positive Catches on All Other Doors	Arched Back Booth Dinette with Drawer(s)	Bedsprad and Pillows
Low Friction Roller Drawer Guides	Laminated Dinette & Nightstand Countertops with Wood Edge	Nylon Carpeting and Pad in Living Area and Bedroom
Brass Finished Cabinet Hardware	Padded Vinyl Ceiling	Linoleum Flooring in Bath
Laminate Kitchen Countertop with Backsplash and Fiberglass Sink with Two Sink Covers	Oversized Rear Wardrobe Closet with Mirrors (N/A: 30PBD)	Laminated Plank Flooring in Kitchen
	Medicine Cabinet with Shelves	Mini Blinds Throughout
		Fabric Barrel Chair (N/A: 30PBD)
		Fabric Jack Knife Sofa

OPTIONS

Value Package (Forced Option)
Woods: Regal Cherry, Maple, or Walnut
Decors: Lavender Mist-Rose, Cobblestone-Tan, Oxford-Blue
Fabric Recliner Chair (N/A: 30PBD)
Soft Touch Vinyl Recliner Chair (N/A: 30PBD)
Soft Touch Vinyl Jack Knife Sofa
Fabric Magic Bed (N/A: 30PBD, 32PBD)
Fabric Electric Sofa
Raised Refrigerator Panel Insert

ELECTRICAL SYSTEMS AND LIGHTS

50 Amp 120V/240V Distribution Panel and Power Cord	12V and 110V Outlets in Cockpit Area	Underhood Utility Light
60 Amp Electronic 12V Power Converter	Porch Light	Computer Hook-Up with Phone Jack in Dinette Area
Onan® 6.5 KW LP Generator	Power Entry Steps with Light	Systems Control Center
Two 6V Batteries (House Batteries)	Lights in Outside Storage Compartment	12V Incandescent Ceiling Lights Throughout
Battery Disconnect Switch at Front Door	120V Receptacles in Outside Storage Compartment	Cosmetic Vanity Lights in Bathroom
		Decorative Dinette Light

OPTIONS

Onan® 5.5 KW Diesel Generator
Onan® 7.5 KW QD Diesel Generator
Energy Management System
1500-Watt Inverter with Two Additional Batteries

PLUMBING AND LP SYSTEMS

Demand Water System and Water Pump	Winterization Valving System	No-Fuss Flush Black Holding Tank Rinsing System
6-Gallon LP Gas/Electric Water Heater with Electronic Ignition (DSI)	Toilet with Sprayer	Insulated Systems Compartment with Easy Access to Hook-Up
Water Heater By-Pass Valve	One-Piece Fiberglass Shower	Gravity Water Fill
	Glass Shower Door with Brass Frame	

OPTIONS

10-Gallon LP Gas/Electric Water Heater with Electronic Ignition (DSI) (N/A: 30PBD)
Bath Tub (30PBD, 36PBD)

HEATING, VENTS, AND AIR CONDITIONING

One 13.5M BTU Roof Air Conditioner with Ducted Air and Wall Digital Thermostat Control (N/A: 36PBD)	35M BTU Electronic Ignition Furnace
One 13.5M BTU and One 11.0M BTU Roof Air Conditioner with Ducted Air and Wall Digital Thermostat Control (36PBD)	Electronic AC/Heat Climate Control System
	In-Floor Ducting Heating System
	12V Roof Vent in Bath and Kitchen
	12V Heater in Wet Bay

OPTIONS

Two A/Cs (13.5M BTU and 11.0M BTU) (Std. on 36PBD)
12V Attic Fan in Kitchen

WINDOWS, DOORS, AND AWNINGS

Flush Mount Radius Single Pane Safety Glass Dark Tinted Slider Windows	Tinted Skylight in Bathroom with Protecta Glaze
Front Entry Door with Removable Screen	Acrylic Patio Awning
Interior and Exterior Grab Handles	Topper Slide-Out Awnings

OPTIONS

Front Door Awning
Dual Pane Windows

SAFETY

Fire Extinguisher	LP Gas Detector	Pilot and Co-Pilot Three-Point Seat Belts (Lap and Shoulder)
Deadbolt Lock on Entrance Door	Smoke Detector	Third Brake Safety Light
120V GFI Protected Circuit (Kitchen, Bathroom, Exterior)	Carbon Monoxide Detector	Egress Window

CHASSIS/ENGINE/SUSPENSION

Roadmaster R4R (Rail Chassis, Four Air Bags, Rear Radiator)	Dual Fuel Fill	Six-Point Connector
Cummins® ISB 275 HP Low Torque Engine with Allison® 2000 MH Transmission	Radial Tires: 255/70R/22.5	Undercoating
Torque: 600 lbs./ft. Max. Net at 1,600 RPM	Stainless Steel Wheel Simulators	
Cubic Inch Displacement: 359" / 5.9L	Four Gas Shock Absorbers	
Rear Axle Ratio: 4.88:1	Hydraulic Anti-Lock Braking System	
160 Amp Alternator	Air Cleaner Restriction Indicator	
	Fuel and Water Separator	
	4,000 lb. Hitch Receiver with	

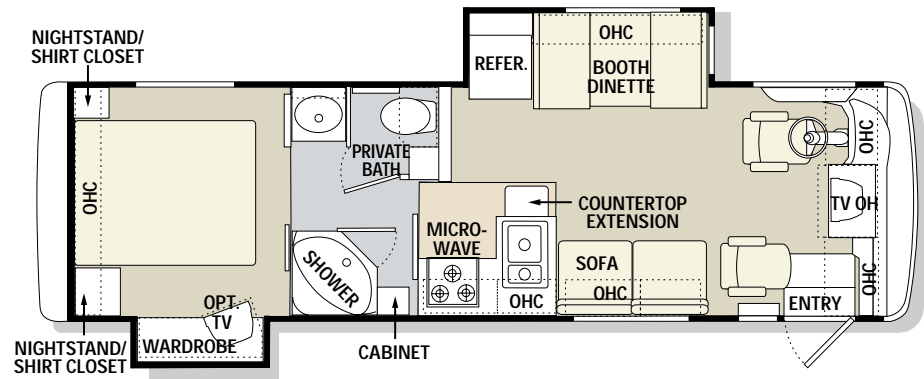
OPTIONS

Cummins® ISB 300 HP Low Torque Engine with Allison® 2000 MH Transmission (Forced Option)
Hydraulic Levelers

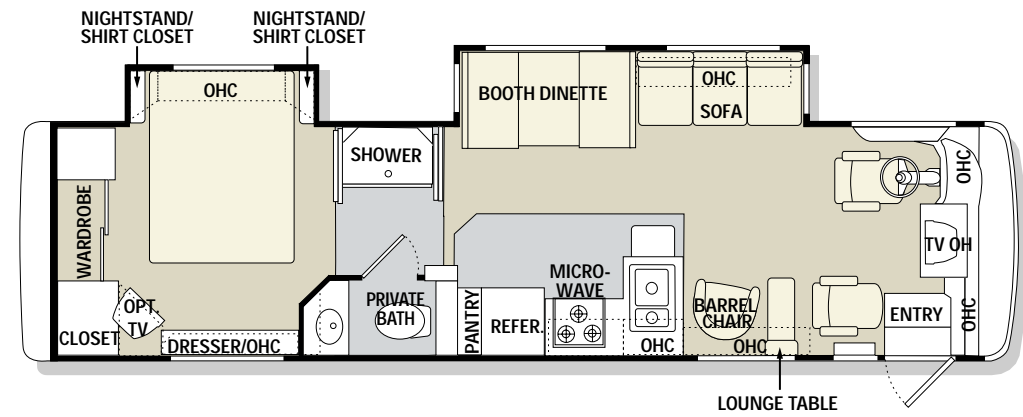
Due to the large variety of options and floorplan arrangements available to our customers, actual weights for each unit can differ significantly. Monaco Coach provides a weight sticker on each unit we produce which includes that unit's tank capacities and approximate weight. Consult your local Monaco Coach dealer for unit availability and further information. Your towed vehicle should be equipped with auxiliary brakes if the weight of the towed load exceeds 1,000 lbs. The information printed in this brochure reflects product design, fabrication, and component parts at the date of printing. The manufacturer reserves the right, at any time, to make changes in product design or material or component specifications as its sole option, without notice. This includes the substitution of components of a different brand or trade name which will result in comparable performance. All information printed in this brochure is subject to change after the date of printing. Some features shown or mentioned in this brochure are optional and may only be available in selected floorplans. Photographs may show props or decorations that are not standard equipment on Monaco Coach models. Monaco Coach, the Monaco logo and its design, are registered trademarks. All other products and company names are trademarks and/or registered trademarks of their respective holders. While the color of the motorhome's exterior and the interior fabrics depicted in this sales brochure are fair and reasonable depictions, the colors depicted may not be an exact match of the actual colors because of the variances in photo-processing and variances caused by inserting the photographs within the sales brochure. Due to product improvements, changes during the model year and/or transcription errors that may occur, information represented within this brochure may not be accurate at the time of your purchase. If certain information is significant to your purchasing decision, please confirm the information with your dealer prior to submitting your order.



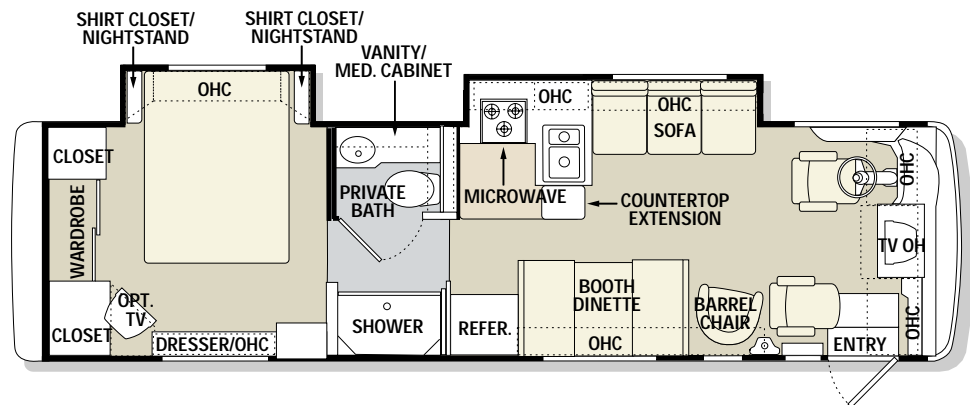
30PBD



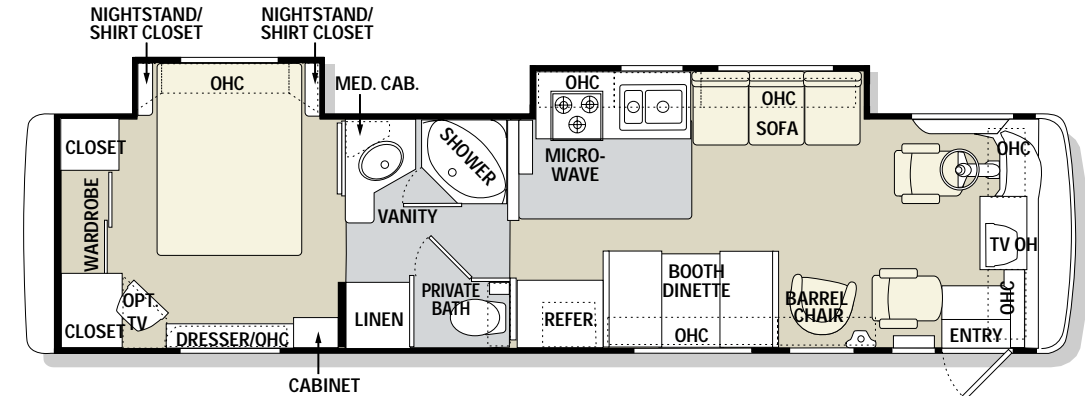
34PDD



32PBD



36PBD

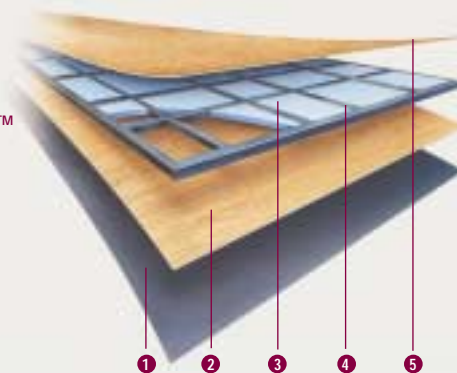


INNOVATION. ENGINEERING. AND QUALITY THAT LEADS AN INDUSTRY.

A Monaco coach. It's what other coaches aspire to be. And what other RVers wish they owned. Why? Because our innovative construction features put us years ahead of the rest of the industry. And because our high-quality materials and attention to detail have given us a reputation we live up to every day. Want to know more? A Monaco dealer near you will be happy to show you firsthand. In the meantime, here are a few of the highlights.

FLOOR CONSTRUCTION:
(BOTTOM TO TOP)

1. Darco
2. Luaun
3. Blue foam
4. 1-1/2" steel tube
5. 5/8" Structurwood™



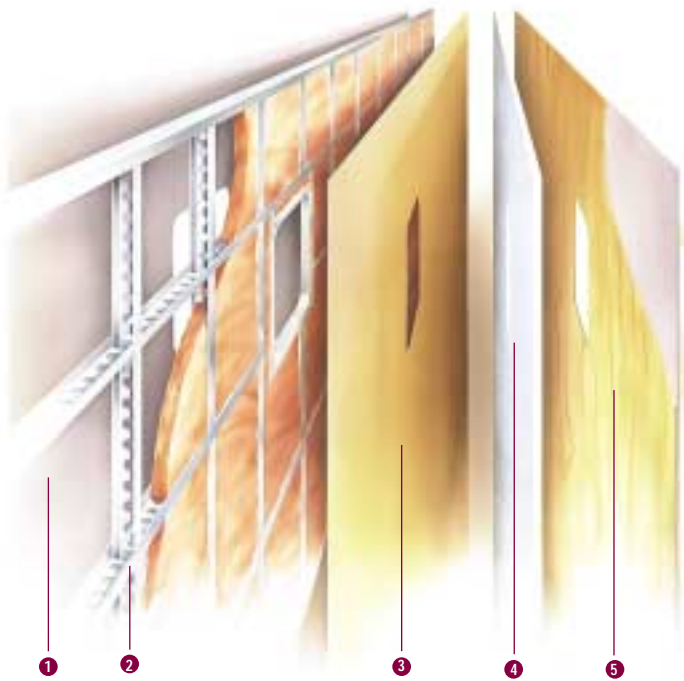
THE ROOF STRUCTURE CONSISTS OF:
(TOP TO BOTTOM)

1. Peaked aluminum roof
2. Luaun backing
3. Thick, tapered bead foam insulation
4. Aluminum double I-beam superstructure filled with fiberglass insulation
5. Vapor barrier
6. Structure foam: thermal insulative barrier
7. 1/2" bead foam insulation
8. Foam padding for extra insulation
9. Padded vinyl ceiling

CAYMAN 2003 VALUE PACKAGE (FORCED OPTION):

In addition to all of the wonderful standard features Cayman has to offer, this year we're also offering a host of options to make your "home away from home" as comfortable as possible. Introducing the new 2003 Value Package from Monaco.

- Day/night shades with blackout shades in the bedroom
- Stainless steel sink and faucet in kitchen
- Mirror to bedroom back wall (30PBD) and arched mirror in living area (N/A: 36PBD)
- Solid surface countertops in the kitchen and bathroom
- Solid surface sink in the bathroom
- Raised panel cabinet doors throughout
- Separate faucet for filtered water
- Halogen lighting under cabinet overheads
- Painted skirt and mask
- Fluorescent ceiling lights in lieu of pancake ceiling lights
- Beveled mirrors in lieu of border behind kitchen countertop



WALL LAYERS OF PROTECTION: (LEFT TO RIGHT)

1. Smooth .063 aluminum is standard; high-gloss gel coat fiberglass is optional
2. Interlocking C-Channel filled with 1-1/2" fiberglass insulation glued in place so it doesn't sag or leave spaces uninsulated
3. Vapor barrier
4. Bead foam adds comfort, saves energy and provides a thermal insulative barrier
5. Interior paneling

ROADMASTER R4R RAIL CHASSIS:

The 2003 Cayman features the custom-designed performance of a Roadmaster R4R Rail chassis, from Monaco Coach Corporation. All Roadmaster chassis are built for our luxury diesel motorhomes, so you'll never find this year's coach on last year's chassis. Some of the highlights include:

- Cushion Air Suspension System with four air bags and gas pressured shock absorbers for superb ride and handling.
- An active suspension control system for superior front-to-rear balance and reduced sway.
- Electronically-controlled exhaust braking system for smooth, even braking on the steepest grades.
- CAC stacked on the radiator, with an aluminum core, for the best cooling package in the industry.
- Heavy-duty steel undercarriage and firewall for unsurpassed strength and durability.



WELCOME TO THE FAMILY.



◀ WEB SITE

Our web site is loaded with many features. Visit www.monacocoach.com for news you can use. The site contains all the basics, plus factory tours, a handy "dealer finder" option and updates on Monaco, its products and upcoming club events.

LIFESTYLES MAGAZINE ▶

To keep you informed, we'll send you a free subscription to *Lifestyles* magazine. You'll learn about product tests, club events, destinations and news from the road.

OWNER ADVANTAGE PROGRAM

As a Monaco owner, you're invited to join our comprehensive Owner Advantage Program. With this impressive roadside assistance package, Master Certified RVDA Technicians and ASE Certified Technicians are on call 24 hours a day to handle any problems you may experience with your coach. But that's not all. Members of our Owner Advantage Program also receive the following benefits: unlimited roadside service, fuel delivery, tire change, battery jump start, lockout service, trip routing and maps, and much more.



During your first year of ownership of a brand new motorhome, you will have access to free 24-hour emergency assistance, including free towing and roadside service.



CLUBS & RALLIES

Connect with other Monaco owners and build lasting friendships through the owner clubs and rallies. With chapters all across the nation, you'll have many opportunities to share the Monaco lifestyle. You will also receive a free one-year membership to a Monaco Owners Club.



A STORY OF PASSION AND PERFECTION.

The fresh morning air that steams your coffee as you step outside. The quiet confidence of driving headlong into the scenery before you. The rush of smiles that greets you on surprising the kids with a visit. At Monaco, moments like these are our motivation — the inspiration behind the desire to create an elegant means to an end, a seamless synthesis of journey and destination. Ours is a passion that's shared by a growing number of freedom-seekers across the nation. By those who appreciate the quality of experience that comes from honing every detail to its most reliable performance. A performance that's supported nationwide throughout our network of service and support, day after day, year after year. Welcome home — welcome to Monaco.

For more information, visit a Monaco dealer near you — or, log on to our web site, at www.monacocoach.com.



91320 Industrial Way, Coburg, OR 97408 800 634 0855
606 Nelson's Pkwy., Wakarusa, IN 46573 800 650 7337

Monaco Coach Corporation is traded on the NYSE under the listing MNC.