

Only serious  
diesel enthusiasts  
need apply.





39W-Shadow Sage with Concert Cherry

**Where convenience and luxury intersect.**

Expand your living space at the touch of a button with the StoreMore® slideout system. Premium Stitchcraft furniture adds comfort and durability and is available in leather for added luxury. In keeping with the functional beauty of the coach, the interior cabinetry is designed to optimize storage space and access to it. The doors and drawers also feature a catalyzed protective top-coat process that provides a highly durable, luxurious satin finish.

Superior interior climate comfort is maintained with floor-ducted, forced-air heating and ceiling-ducted TrueAir Residential Central Air Conditioning. The heat pump lets you take the chill off on cool mornings without starting the furnace. Standard dual-glazed windows offer increased thermal efficiency while day/night pleated shades enable you to select your level of light and privacy.

**How do you spell diesel? Try J-o-u-r-n-e-y.**

Are you a serious diesel enthusiast? The 2004 Winnebago Journey is built to match that enthusiasm. Not a stripped down coach on a diesel chassis, but a true diesel pusher with true diesel pusher features. The Freightliner® chassis offers a powerful 300-hp Cummins® engine (330-hp on the 39W), Allison® electronic transmission and advanced suspension systems for more responsive driving and handling.

For committed diesel lovers, the Journey is loaded with comfort-enhancing features. A 24" flat-faced stereo TV, the BenchMark™ Full Comfort Dinette, front and rear bedroom slideouts, TrueAir® Residential Central Air Conditioning and the available Sleep Number® Bed by Select Comfort™ to name just a few.

Exclusive features. State-of-the-art diesel pusher performance. Tried-and-true comfort and value. You'll notice many other key features in this brochure. We hope it helps you pick the Journey that's perfect for you.



36G-Beechwood with Concert Cherry

**It's all about choices.**

Journey's variety of entertainment options begins with the 24" flat-faced Sony® stereo TV, strategically positioned in a handsome wood-faced cabinet to provide great viewing angles from any seat in the house. The amplified antenna, video selection system, available DVD/VCR combo with remote and available digital satellite dish let you select from network programming, movies or premium channels. Enjoy movie-theatre-quality sound when you select the Deluxe Sound System with 5-channel QSURROUND™. The 300-watt inverter lets you run the front and rear TVs and DVD/VCR using 12-volt DC power. Power additional 110-volt appliances with your house batteries when you choose the available 2,000-watt inverter/charger.

Journey offers the flexibility in features and floorplans that experienced RVers desire. Exhibit A: the variety of available seating and dining arrangements.



**Eat. Store. Snore.**

The BenchMark Full Comfort Dinette features innerspring seat construction for residential style and comfort. Flip up the seats for easy access to large storage areas. BenchMark also quickly converts into a comfortable bed.



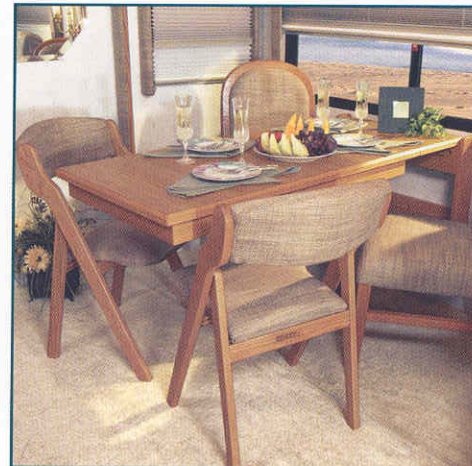
**These seats do everything.**

Get comfortable in high-back, custom-designed Stitchcraft driver and passenger seats with the multi-position armrest and recline feature. Upgrades include leather, six-way power assist and footrest for the passenger seat. A power stepwell cover in front of the passenger seat closes to create a flat floor. A banquette is a great place to relax and is available in fabric or leather on the 34H, 36G and 39W.



**For the King or Queen of the road.**

The hoop-base recliner chair is both a cozy rocker and a comfortable recliner with footrest. Best of all, it can be easily moved to your favorite spot when you're not traveling. Standard or available on all models.



**Two plus two.**

The dining table provides spacious dining for two and easily expands to accommodate four place settings for entertaining guests (available on the 34H, 36G and 39W).

**Sit back and relax.**

The Rest Easy® Multi-Position Lounge comes with a flip-out beverage tray. Upgrades include available leather and dual controls. (Beverage tray is not available with dual controls.)



It starts as a plush sofa.



At the touch of a button, it becomes a relaxing recliner with pull-out ottoman.



Touch the button again and it's a comfortable, contoured 60" x 75" bed.



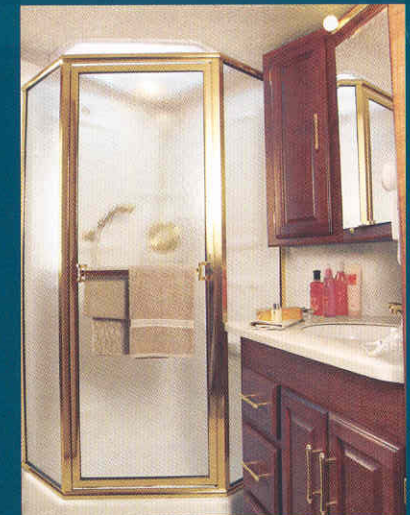
**Sweet dreams.**

The standard rear bedroom slideout comes with a walk-around queen-size bed, Serta® innerspring mattress and underbed storage (underbed storage not available on the 39W). The spacious built-in wardrobe features large drawers and plenty of hanging storage space. Passenger and driver-side bedroom windows provide improved cross ventilation. The 19" TV is mounted in the corner for optimum viewing.



**What's your number?**

The available pillow-top queen-size Sleep Number Bed by Select Comfort is another Winnebago Industries exclusive. Using the hand-held remotes on each side of the bed, you can quickly and independently adjust the mattress firmness level to your ideal level of comfort and support.



**Bathe yourself in comfort.**

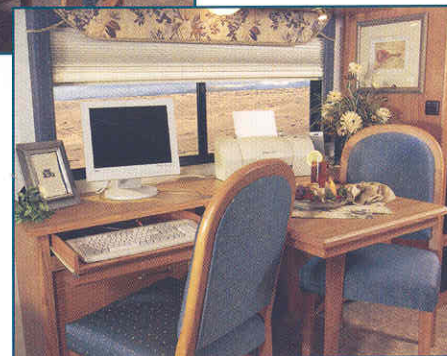
A skylight lends a spacious feel to the bath area. Upscale features include solid-surface countertops, a residential-height porcelain toilet, recessed sink and single-control brass faucet. A hamper is standard on the 32T and 34H. Enjoy plenty of hot water thanks to the 10-gallon water heater with Motoraid that operates on LP or 110-volt electrical. The Moen® Posi-Temp® maintains shower temperature regardless of changes in water pressure. The available shower package upgrade includes hand-held showerhead and fold-down shower seat.

39W-Shadow Sage with Concert Cherry



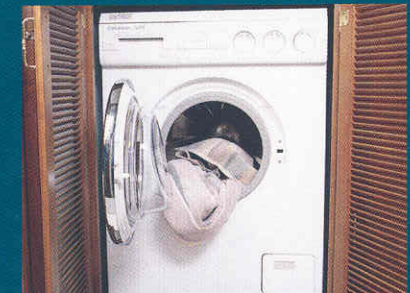
**Compliments to the chef.**

The galley features spacious solid-surface countertops, low-maintenance vinyl tile flooring, fluorescent lighting, a 30" residential microwave with sensor cook feature, a vented range fan and a double-door refrigerator/freezer. A four-door model refrigerator with icemaker and a microwave convection oven are available.



**Put more than food on it.**

The multi-function table features dining for two, expands to seat four and can be used as a computer desk or hobby table (available on the 34H, 36G and 39W).



**At your convenience.**

The available built-in, combination washer/dryer features multiple wash, time and temperature cycles for a wide variety of fabrics (not available on the 32T).



### One Key.

Open almost everything with one key, thanks to the innovative KeyOne™ lock system. A single, double-bitted key opens most exterior compartments and doors so you won't have to fumble through a pocket full of keys.



**ONE PLACE**  
systems center



### This radio's a "wow."

The RV Radio® features large control knobs, easy-to-operate buttons, an AM/FM stereo cassette/CD player or available

multi-disc changer. And you can run it from the house batteries by flipping the radio power switch. A weather band feature provides weather updates at the touch of a button.

### 100 stations on this dial.

Upgrade your listening choices with Sirius™ Satellite Radio programming (requires the satellite-ready radio available fall 2003). It offers 100 channels of digital entertainment. High-altitude satellites deliver crystal clear satellite programming anywhere in the U.S. with no signal fades. (Sirius Satellite Radio programming requires a subscription.)



### Spread the cool around.

Interior climate control has never been more precise, thanks to Winnebago Industries TrueAir Residential Central Air Conditioning. It utilizes superior cooling technology to supply optimum comfort to every part of the coach. At the heart of the system is a Coleman®-Mach® cooling unit, located below the floor line of the coach. The unit provides a low vehicle profile and center of gravity, plus reduced interior noise and easy access for service. On cool days, the heat pump provides heat, minimizing the need to use LP.



### Trip computer.

The available TripTek™ computer collects, analyzes and saves vehicle data while displaying trip information on the rear vision color monitor. Displays include miles and time to destination, time traveled, fuel economy and a handy pre-trip checklist.



### One look.

The OnePlace™ Systems Center puts vital switches, gauges, levels and controls in one convenient location, so you can check them at a glance. A ceiling courtesy light lets you check things at night.



### Everything's right there.

You're in command because the cockpit-style dash places precision driving controls at your fingertips. The steering wheel is sized for responsive handling and features both tilt and telescoping functions. The touchpad transmission controls and switches for powered mirrors, sunvisors and power door locks are located on the left-side driver's panel for easy visual reference and operation. Get your bearings or the outside temperature with the electronic compass/thermometer. Cut unnecessary glare with the available power sunvisors. The available dash-mounted Sony® color rearview monitor system simplifies backing and maneuvering.

### Power manager.

Keep your electrical system running smoothly, even when operating your central air conditioning on a 30-amp. shoreline, with the PowerLine® Energy Management System. It monitors onboard 110-volt electrical usage and automatically minimizes the nuisance of campground circuit breaker tripping by controlling the operation of "postponable" electrical loads when demand peaks during heavy power usage. As demand is lowered, PowerLine automatically returns power to the secondary appliances and systems.



### Dry up.

The wall mounted hair dryer comes with a convenient night-light.



### Plugged in.

A Black and Decker® rechargeable flashlight and vacuum are conveniently located so you won't be caught in the dark and you'll always be ready for a quick cleanup.



**The party starts here.**

Listen to your favorite music outdoors under the awning with the exterior entertainment center featuring an AM/FM stereo and CD player. A standard feature, it includes two speakers, a 12-volt power supply, TV jack and a patio table.



**Rain, rain go away.**

A rain gutter incorporated into the awning rail channels condensation and rainwater runoff away from the door and windows.



**STORE MORE**



**Two-way radio.**

For communication in the campground or added peace of mind on day trips, the four available multi-channel radios with privacy channels recharge from the coach's house batteries at their built-in charging station. Nickel-metal hydride batteries provide up to 15 hours of standby and 90 minutes of talk time on a single charge.



**These mirrors don't miss a thing.**

Journey features exterior mirrors with increased surface area. But that's only part of the story. The mirror mounting positions were designed (after extensive research) to provide the best viewing angle. The result is exterior mirrors with a greater field of vision. Plus, the driver side mirror incorporates a convenient, breakaway design.

**Give your back a break.**

StoreMore features large, well-lit exterior storage compartments that are designed to accommodate bulky and odd-shaped items. Best of all, these compartments extend along with the slideroom for easy access without crawling under the slideroom. The exterior compartment doors open easily thanks to single-paddle latches and gas struts.



**You've got power.**

Enjoy electrical power wherever your travels take you with the standard LP-powered 6,500-watt Onan® Marquis Gold™ generator. A 7,500-watt Onan Quiet Diesel™ generator (shown) is also available.



**It's right in front of you.**

Rinse off muddy or sandy gear outside at the exterior wash station. The same heated compartment also houses the major plumbing connections and service points for added convenience.



**Quicker hookups.**

Say goodbye to wrestling cords and hoses through small holes. The QuickPort™ Service Connection Hatches make hookups a snap.



**Less fuss.**

The sewer hose includes a QuickConnect™ Coupling Valve and a storage holster for added convenience.

### Easy maintenance.

Draining air line system condensation is a recommended service procedure on all vehicles that utilize air brakes and air suspension. Journey has automatic system dryers and heated air system drains that incorporate remote lanyard controls. This eliminates the need to crawl under the chassis to perform this routine maintenance function.

### Hot wheels.

Stylish aluminum wheels are standard on the 39W; available on 32T, 34H and 36G with a six-speed transmission.

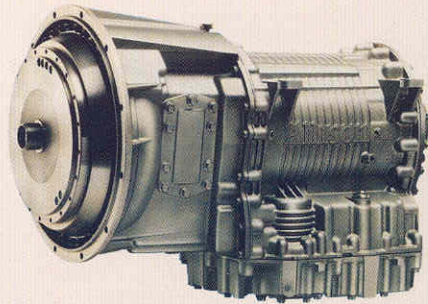


### No gymnastics required.

The air filter and fluid level checkpoints are in easy-to-reach locations.

### Built to last.

When purchasing a new motor home, you may think that a chassis is a chassis is a chassis. But the chassis your RV is built on has a crucial impact on your overall experience. When it comes to a chassis, the manufacturer's history of design innovation with a proven track record of performance and a nationwide service network are significant factors to consider.



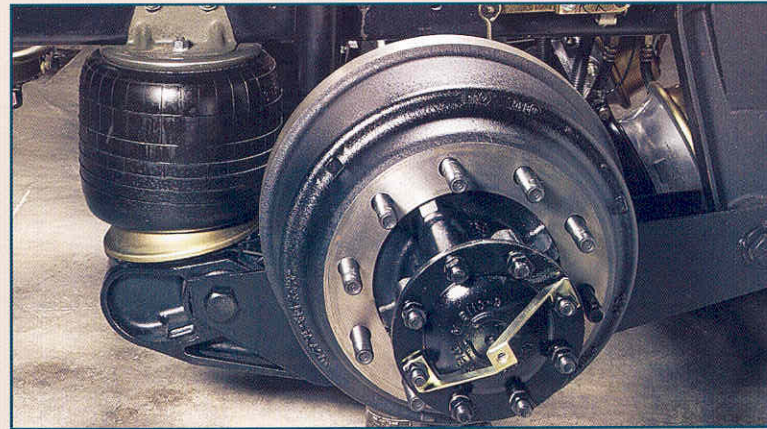
### These gears adjust to yours.

The Allison electronic control transmission is a proven performer. Smart logic enables it to "learn" your driving habits and fine-tune shift points accordingly for maximum performance.



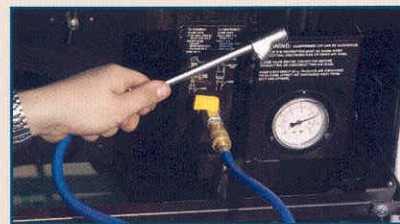
### More than enough horses.

Rugged diesel power provides exceptional torque and economy. The 5.9L 300-hp Cummins engine features advanced electronic controls for superior performance and fuel economy. The standard engine exhaust brake enables you to use the engine to slow the vehicle, promoting longer brake life. The 330 Caterpillar® diesel is standard on the 39W. A 330 Cummins is available on the 39W.



### Floating on air.

The rear air suspension places larger air springs in a wide-track stance just inboard of the rear wheels. More efficient than less-advanced multiple smallbag systems, it offers optimum stability while protecting the air springs from road debris kicked up by the tires. The air spring cushions the vehicle body from the travel movement of the rear axle. As the axle moves in relation to the coach, air pressure is automatically released or introduced to the air spring to maintain the proper ride height. (Freightliner chassis shown.)



### Auxiliary air supply.

A convenient auxiliary air connection with detachable 50-ft. hose is standard and provides a ready source of compressed air for tires, balls, etc. (air chuck is not included).



### Stopping power.

Journey features anti-lock air brakes for improved braking in all conditions. Enjoy maximum brake force and control thanks to the treadle foot-brake pedal mounted solidly to the steel cab deck.

Exterior Graphics Packages



Jaguar Blue Metallic



Sand Metallic



Warm Silver Metallic

Full Body Paint Options



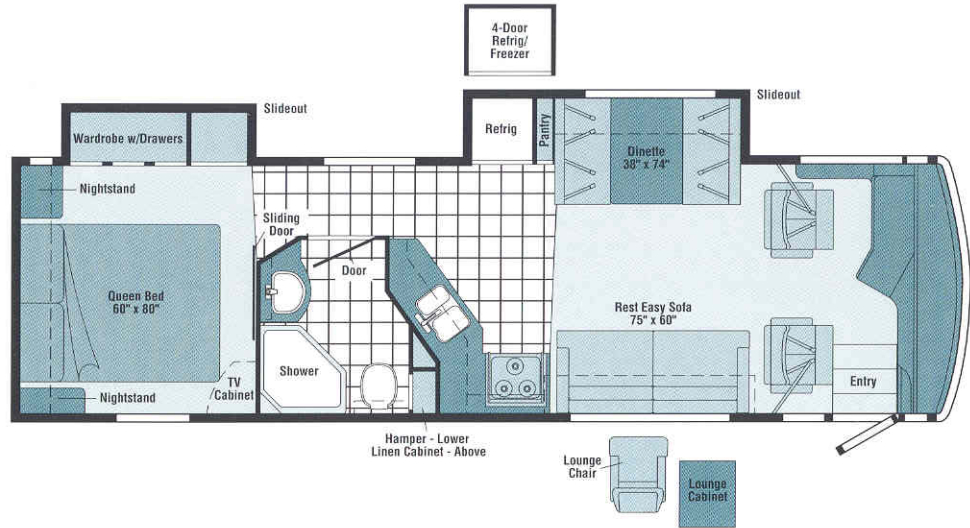
Almond



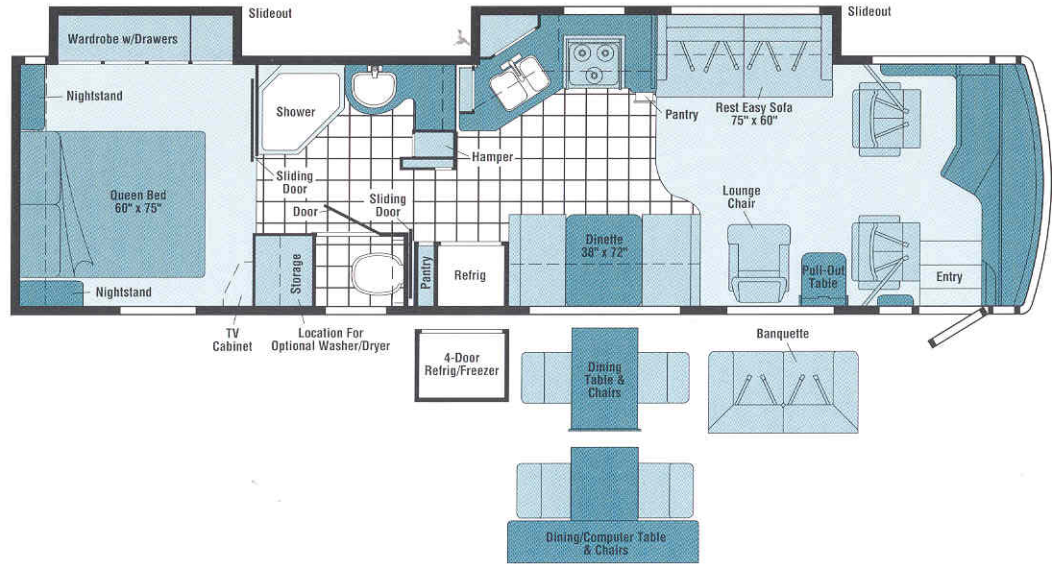
Catalina Blue



Seamist



Model 32T



Model 34H



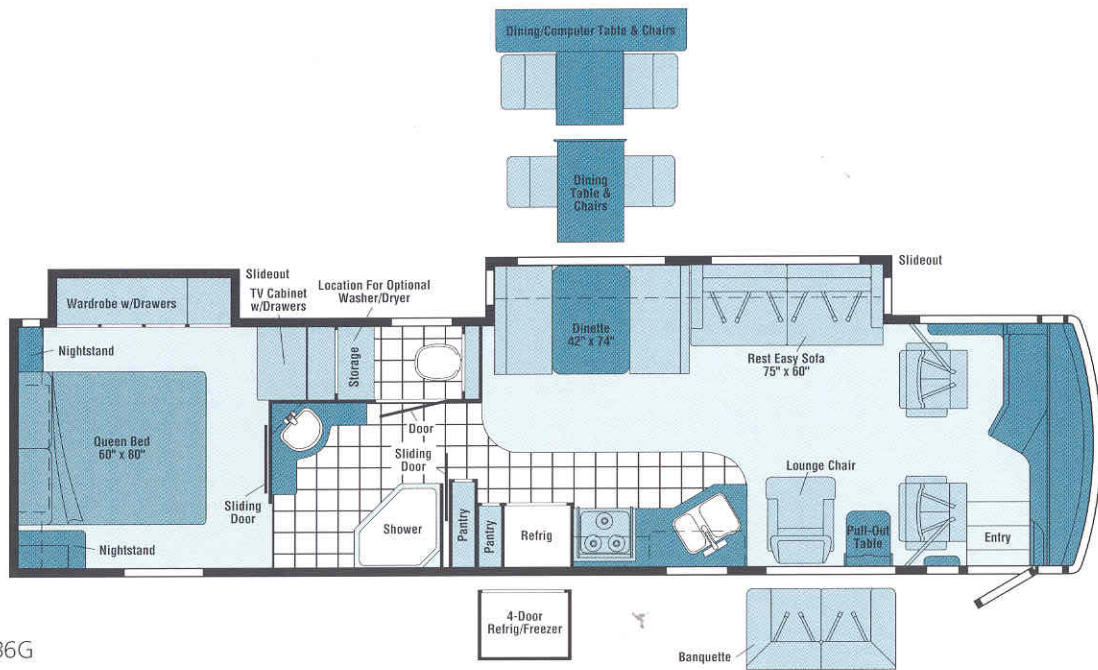
Vinyl Floorcovering



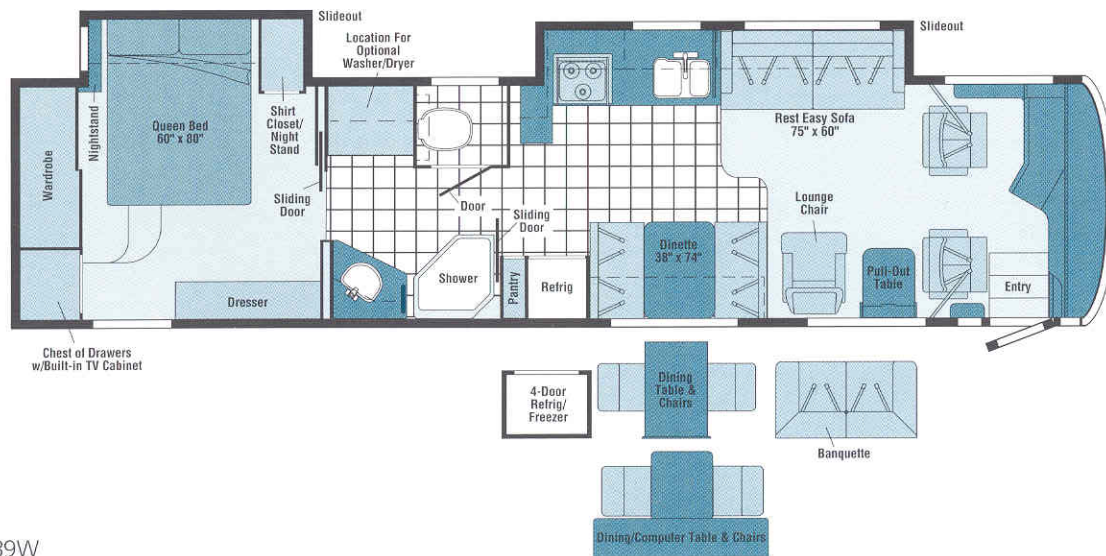
Seat Belts

Note: Dimensions shown are for sleeping space only and may vary due to styling differences. Dashed lines denote overhead storage areas.





Model 36G



Model 39W



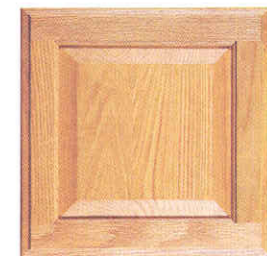
Beechwood



Concert Cherry



Shadow Sage



Portsmouth Oak



Vanderbilt Blue



### The outside story.

Journey's standard, one-piece, high-gloss fiberglass sidewall is amazingly tough—typical for Winnebago Industries design. Laterally mounted floor risers allow for true basement storage. Standard features include hydraulic jacks with touchpad controls to keep your Journey super-stable and level when parked. A full-width mud guard with Winnebago logo is available.

## 2004 Winnebago Journey® Specifications

	32T	34H	36G NEW	39W
Length	32'8"	34'9"	36'5"	39'4"
Exterior Height <sup>a</sup>	11'2"	11'6"	11'5"	11'4"
Exterior Width <sup>b</sup>	8'5.5"	8'5.5"	8'5.5"	8'5.5"
Exterior Storage <sup>c</sup> (cu. ft.)	80	90	108	145
Interior Height	6'8"	6'8"	6'8"	6'8"
Interior Width	8'0.5"	8'0.5"	8'0.5"	8'0.5"
Fresh Water Capacity w/Heater - (gal.)	96	96	96	96
Holding Tank Capacity - Black/Gray (gal.)	52/42	48/52	52/48	52/48
LP Capacity <sup>d</sup> (gal.)	39	39	39	39
Fuel Capacity - F/W (gal.)	90/NA	90/NA	90/NA	90/100
GCWR (lbs.) <sup>e</sup> F/W	28,000/37,910 <sup>f</sup> /NA	28,000/37,910 <sup>f</sup> /NA	28,000/37,910 <sup>f</sup> /NA	37,910/39,500
GVWR (lbs.) F/W	27,910/27,910 <sup>f</sup> /NA	27,910/27,910 <sup>f</sup> /NA	27,910/27,910 <sup>f</sup> /NA	27,910/29,500
GAWR - Front (lbs.) F/W	10,410/10,410 <sup>f</sup> /NA	10,410/10,410 <sup>f</sup> /NA	10,410/10,410 <sup>f</sup> /NA	10,410/10,500
GAWR - Rear (lbs.) F/W	17,500/17,500 <sup>f</sup> /NA	17,500/17,500 <sup>f</sup> /NA	17,500/17,500 <sup>f</sup> /NA	17,500/19,000
Wheelbase	190"	208"	228"	262"

F=Freightliner Chassis w/5-speed transmission W=Optional Workhorse Chassis w/6-speed transmission  
 i=Optional Freightliner Chassis w/6-speed transmission

Standard - S Optional - O

### AUTOMOTIVE/CHASSIS

	32T	34H	36G	39W
<b>Chassis</b> - Freightliner, Cummins ISB 5.9L turbo-charged diesel 300-hp, rear radiator, Allison 5-speed electronic 2,000 MH transmission, NeWay® front and rear air suspension, 130-amp. alternator, exhaust brake, 4-wheel ABS, <b>Wheels</b> wheel liners, stainless steel	S	S	S	
<b>Chassis</b> - Freightliner, Caterpillar 7.2L turbo-charged diesel 330-hp, rear radiator, Allison 6-speed electronic 3,000 MH transmission, NeWay front and rear air suspension, 160-amp. alternator, exhaust brake, 4-wheel ABS, <b>Wheels</b> stylized aluminum		O	O	S
<b>Chassis</b> - Freightliner, Cummins ISB 5.9L 300-hp, rear radiator, Allison 6-speed electronic 3,000 MH transmission, NeWay front and rear air suspension, 160-amp. alternator, exhaust brake, 4-wheel ABS, <b>Wheels</b> stylized aluminum	O			
<b>Chassis</b> - Workhorse (available January 2004), Cummins ISC 8.3L 330-hp, rear radiator, Allison 6-speed electronic 3,000 MH transmission, Arvin Meritor front and rear air suspension, 200-amp. alternator, exhaust brake, 4-wheel ABS, <b>SmartWheel</b> steering wheel, <b>Wheels</b> stylized aluminum				O
<b>Air Accessory Manifold</b> quick connect, 50' air hose, pressure gauge, manual air shut off, <b>Leveling Jacks</b> HWH® hydraulic, manual control, <b>Tire Tools</b> wrench & leverage bar, <b>Trailer Hitch</b> 5,000-lbs. drawbar/500-lbs. maximum vertical tongue weight & wiring (with 5-speed transmissions), <b>Trailer Hitch</b> ® 10,000-lbs. drawbar/500-lbs. maximum vertical tongue weight & wiring (w/6-speed transmissions)	S	S	S	S

### CAB AREA & DRIVER CONVENIENCES

	32T	34H	36G	39W
<b>Cab Seats</b> (fabric) w/3-point adjustable seat belts, armrests, lumbar support, multi-adjustable slide/recline & swivel, <b>Compass</b> electronic w/outdoor thermometer, <b>Console Center Cabinet</b> , <b>Cruise Control</b> , <b>Exhaust Brake Switch</b> , <b>Floor Mat</b> carpet, <b>Hood Release</b> , <b>Map Lights</b> , <b>Powerpoints (2)</b> 12-volt, <b>Shades</b> light filtering, cab windows, <b>Steering Wheel</b> tilt w/power assist, <b>Sunvisors (2)</b> , <b>Window</b> (driver) full slider w/screen, dual-glazed, <b>Window</b> (passenger) partial slider w/screen, dual-glazed/thermo-insulated, <b>Windshield Wipers</b> intermittent	S	S	S	

	32T	34H	36G	39W
<b>Cab Seat</b> <sup>f</sup> 6-way power assist (driver)	O	O	O	O
<b>Cab Seats</b> <sup>f</sup> 6-way power assist (driver & passenger)	O	O	O	O
<b>Cab Seats (Leather)</b> w/vinyl surround	O	O	O	O
<b>Cab Seat</b> <sup>f</sup> passenger seat w/footrest	O	O	O	O
<b>Defroster Fans (2)</b> auxiliary 2-speed w/instrument panel switch, <b>Monitor System</b> rearview color w/single camera & 1-way audio, Sony, <b>Sunvisors (2)</b> powered, <b>Trip Computer</b> TripTek	O	O	O	O
<b>GPS Navigation System</b> (available fall 2003)	O	O	O	O

### ENTERTAINMENT

	32T	34H	36G	39W
<b>CB Prep</b> (includes antenna, antenna lead, 12-volt power supply), <b>Entertainment Center (Exterior)</b> w/CD Player DC receptacle, AC duplex receptacle, AM/FM radio w/remote, TV jack, radio antenna, speakers (2), table, lockable compartment, <b>Radio (Cab)</b> AM/FM stereo cassette/CD, weatherband, remote, roof-mounted flexible rubber antenna, speakers (4), <b>Radio Power Switch</b> main/auxiliary battery, <b>Satellite System Ready</b> , <b>Telephone</b> input & interior jacks, <b>TV 19" Color AC</b> w/remote, bedroom, <b>TV 24" Color AC</b> w/remote, front, <b>TV Enhancement Package</b> antenna (amplified), interior jack(s), coax wiring, cable input, exterior jack, reminder light, <b>Video Selection System</b>	S	S	S	S
<b>Compact Multi-disc Changer</b> w/remote	O	O	O	O
<b>DVD/VCR Player</b> <sup>f</sup>	O	O	O	O
<b>Radios (4)</b> two-way	O	O	O	O
<b>Satellite</b> RV digital, manual, elevation sensing unit	O	O	O	O
<b>Satellite Dish Antenna</b> RV digital, power	O	O	O	O
<b>Satellite Radio</b> Sirius™ (available fall 2003)	O	O	O	O
<b>Satellite System</b> RV digital, in-motion	O	O	O	O
<b>Sound System</b> deluxe, w/5-channel QS surround sound, amplifier, cube speakers (5), bass speakers (2)	O	O	O	O

### INTERIOR

	32T	34H	36G	39W
<b>Accessory Package</b> rechargeable flashlight, rechargeable hand-held vacuum cleaner, <b>Ceiling</b> fabric, <b>Shade</b> front wraparound, pleated w/wands, <b>Lights</b> ceiling w/wall switches, incandescent, <b>Light</b> decorative dinette, <b>Lights</b> fluorescent lights, recessed, galley, dinette, lounge w/2-way wall switches, <b>Lights</b> reading, auxiliary, <b>Mini Blinds</b> galley & bath area, <b>Shades</b> pleated, day/night, lounge, dinette, & bedroom areas, <b>Sliding Stepwell Cover Panel</b> powered, <b>Windows</b> dual-glazed/thermo-insulated	S	S	S	S
<b>Ceiling Fan</b>	S	S	S	
<b>Cupholder(s)</b>		S		S
<b>Mirror</b>		S	S	
<b>Picture(s)</b>	S	S		S

### CABINETS

	32T	34H	36G	39W
<b>Portsmouth Oak</b> stile-and-rail construction w/raised-panel inserts on cabinet doors	O	O	O	O
<b>Concert Cherry</b> stile-and-rail construction w/raised-panel inserts on cabinet doors	O	O	O	O

### COUNTERTOPS

	32T	34H	36G	39W
<b>Solid Surface</b> galley & bath	S	S	S	S

### FLOORCOVERING

	32T	34H	36G	39W
<b>Carpeting</b> w/pad, <b>Vinyl Tile</b> galley & bath	S	S	S	S

## FURNITURE

	32T	34H	36G	39W
<b>BenchMark</b> Full Comfort Dinette (fabric) w/access to storage below	\$	\$	\$	\$
<b>REST EASY</b> Multi-Position Lounge <sup>f</sup> w/throw pillow(s)	\$	\$	\$	\$
Banquette <sup>f</sup> (Fabric) w/throw pillows		0	0	0
Banquette <sup>f</sup> (Leather) w/throw pillows		0	0	0
Chair Lounge (Fabric) hoop-base w/end table with slide-out top	0			
Chair Lounge (Fabric) hoop-base w/magazine rack & cabinet w/table		\$	\$	\$
Chair <sup>f</sup> Lounge (Leather) hoop-base	0	0	0	0
Dining Table & chairs (2) free standing, (2) folding		0	0	0
Dining/Computer Table & chairs (2) free standing, (2) folding		0	0	0
<b>REST EASY</b> Multi-Position Lounge <sup>f</sup> (Leather) w/dual recliners	0	0	0	0
<b>REST EASY</b> Multi-Position Lounge <sup>f</sup> (Leather)	0	0	0	0

## GALLEY

	32T	34H	36G	39W
Coffeemaker, Faucet single-control, Moen, Light fluorescent under cabinet, Microwave Oven w/Range Fan exterior vent, residential 30," Sharp, Pantry <sup>f</sup> slideout, Range Cover flush-mounted, bi-fold (countertop material), Range 3-burner w/large oven, glass door w/storage below, recessed, sealed burners, Amana, Refrigerator/Freezer large double-door, Norcold, Roof Vent powered ventilator fan, insulated, Silverware Tray, Sink double, molded, w/sink covers (countertop material), Towel Rack wire, Wastepaper Basket, Water Purification System Everpure <sup>®</sup>	\$	\$	\$	\$
Appliance Storage Cabinet		\$		
Countertop Extension flip-up, Cutting Board slide-out			\$	
Glass Partition	\$	\$		
Microwave/Convention Oven w/range fan, residential 30," Sharp	0	0	0	0
Range Top 3-burner w/storage below, recessed, sealed burners, Amana	0	0	0	0
Refrigerator/Freezer <sup>f</sup> 4-door w/icemaker, Norcold	0	0	0	0
Refrigerator/Freezer large double-door w/icemaker, Norcold	0	0	0	0
Spice Rack		\$	\$	
Utility Tray tip-out	\$	\$	\$	\$
Wall Border	\$	\$	\$	\$

## BATH

	32T	34H	36G	39W
Cabinet lavatory, Cabinet linen, Faucet (lavatory) single-control, Moen, Faucet (shower) single-control w/flush showerhead, Hair Dryer wall-mounted w/night-light, Light shower, Lights makeup, Mirror makeup, Robe Hook, Roof Vent insulated, power, Shower w/wall surround, Shower Door textured glass, Skylight, Sink oval, Tissue Holder, Toilet porcelain, w/foot-pedal flush & sprayer, Towel Ring, Wall Border	\$	\$	\$	\$
Fold-down Shower Seat, Hand-held Showerhead	0	0	0	0
Hamper tip-out	\$	\$		
Magazine Rack			\$	
Medicine Cabinet	\$	\$	\$	
Mirror(s)	\$	\$		
Towel Bar	\$	\$		

## BEDROOM

	32T	34H	36G	39W
Bed queen, Serta, innerspring w/underbed storage (NA 39W), Bedspread, Pillows, Throw Pillow, Headboard, Ceiling Molding, Lights reading, decorative, Mirror, Nightstand(s), Powerpoint 12-volt receptacle, Towel Ring, Wall Border, Wardrobe Cabinet carpeted floor, clothes rod, drawers (NA 39W), light to you	\$	\$	\$	\$
Light decorative ceiling light w/dimmer				\$
Light decorative table lamp, Light decorative wall lamp	\$	\$	\$	
Sleep Number queen-size mattress by Select Comfort	0	0	0	0

a The height of each model is based on the curb weight of a typically equipped unit on the standard chassis. The actual height of your vehicle may vary by as much as 2" depending on chassis or equipment variations.

b Journey floorplans feature a wide-body design — over 96" in making your purchase decision, you should be aware that some states restrict access on some or all state roads to 96" in body width. Before making your purchase decision, you should confirm the road usage laws in the states of interest to you.

c Your motor home's load capacity is designated by weight, not by volume, so you cannot necessarily use all available space when loading your motor home.

d Capacities shown are tank manufacturer's listed water capacity (W.C.). Actual filled LP capacity is 80% of listing due to overfilling prevention device on tank.

## EXTERIOR

	32T	34H	36G	39W
<b>Awnings</b> entrance door & patio, manual, <b>Awning Rails</b> w/rain gutters, <b>Door</b> entrance w/separate screen door, deadbolt lock, <b>Entrance Door Step</b> single, electric w/doorjamb switch, <b>Exterior Graphics Packages</b> Sand Metallic or Warm Silver Metallic or Jaguar Blue Metallic, <b>Ladder, Lights</b> fog lamps, <b>Light</b> porch w/interior switch, <b>Light</b> under hood, <b>Light</b> service, driver side, <b>Locking Fuel-fill Door, Mirrors</b> electric remote w/defrost, <b>Mud Flaps (2)</b> rear, <b>Receptacle</b> AC duplex, <b>Sidewall Skin</b> 1-piece smooth fiberglass, high-gloss, <b>Storage Compartments</b> smooth valance panels, trunk liner, gas cylinders, TriMark <sup>®</sup> KeyOne System, paddle latch, lights	\$	\$	\$	\$
<b>Air Horns</b> roof-mounted	0	0	0	0
<b>Awning</b> <sup>f</sup> patio, entrance door, electric	0	0	0	0
<b>Awning</b> <sup>f</sup> windows with full body paint only	0	0	0	0
<b>Compartment Tray</b> slide-out	0	0	0	0
<b>Exterior Full Body Paint Options</b> Almond, Catalina Blue or Seamist	0	0	0	0
<b>Front Exterior Protective Mask</b> with full body paint only	0	0	0	0
<b>Mud Guard</b> full width, rear	0	0	0	0
<b>Undercoating</b>	0	0	0	0

## SYSTEMS

	32T	34H	36G	39W
<b>Automotive Heater/Air Conditioner, Auxiliary Start Circuit, Batteries (Coach) (2)</b> <sup>f</sup> deep cycle, <b>Battery (Coach)</b> disconnect system, <b>Battery Charge Control</b> automatic dual, <b>TRUEAIR</b> Central Air Conditioning System, Central Air Heat Pump, Drain 1 1/2" water tank, <b>Electrical Distribution System</b> AC & DC breaker panels, 55-amp. electronic converter/charger, <sup>f</sup> <b>Electrical System Display Center, Generator</b> 6,500-watt, Onan Marquis Gold, LP, <b>Generator/Shoreline Automatic Changeover Switch, Inverter</b> <sup>f</sup> DC/AC, 300-watt <sup>f</sup> , <b>ONEPLACE</b> Systems Center ceiling-mount courtesy light, battery digital voltmeter, <b>POWERLINE</b> <sup>™</sup> energy management display, generator hourmeter gauge, generator start/stop switch, heating/A/C thermostat, holding tank levels, LP tank level, solar panel/battery charger light, water heater switch, water heater on light & pilot indicator light, water pump switch, water tank level, <b>Power Cord</b> 50-amp., <b>POWERLINE</b> <sup>™</sup> Energy Management System, <b>Service Center (Drainage)</b> drainage valves, holding tank flushing system, 10' sewer hose with <b>Quick CONNECT</b> Coupling Valve, <b>QuickPort</b> Service Connection Hatch, <b>Service Center (Electrical/Water)</b> , cable inputs, drain for fresh water system, exterior wash station w/pump switch, paper towel holder, soap bottle holder, power cord, <b>QuickPort</b> Service Connection Hatch, shoreline/generator automatic changeover switch, telephone input, <b>Solar Panel</b> 10-watt battery charger, <b>Tank</b> flushing system, black tank only, <b>Tank</b> holding, heated compartment, <b>Tank</b> LP, permanent mount w/gauge, <b>Water Heater</b> 10-gallon electronic ignition, LP gas/120 vac w/Motoraid, <b>Water Hookup</b> city, <b>Wash Station</b> exterior, <b>Water Pump</b> demand, <b>Water Tank Fill</b> pressurized city hookup w/diverter valve, <b>Water Tank Fill</b> w/locking door compartment, <b>Tank</b> LP, permanent mount w/gauge, <b>Water System Winterization Package</b> water heater bypass valve & siphon tube	\$	\$	\$	\$
<b>Furnace</b> 35,000 BTU, low profile		\$		
<b>Furnace</b> 40,000 BTU, low profile			\$	\$
<b>Generator</b> 7,500-watt, Onan Quiet Diesel	0	0	0	0
<b>Inverter/Charger</b> <sup>f</sup> DC/AC, 2,000-watt w/remote panel	0	0	0	0
<b>Washer/Dryer Prep</b>		\$	\$	\$
<b>Washer/Dryer Combination</b>		0	0	0
<b>SLIDEOUT</b>				
<b>Slideout Room</b> w/slidoor cover				\$
<b>STOREMORE</b> Slideout Room sofa/dinette w/slidoor cover				\$
<b>STOREMORE</b> Slideout Room sofa/galley w/slidoor cover			\$	\$
<b>STOREMORE</b> Slideout Room refrigerator/dinette w/slidoor cover			\$	
<b>SAFETY</b>				
<b>Assist Bar(s)</b> interior, <b>Assist Handle</b> exterior, acrylic, <b>Bumpers</b> front & rear, <b>Detectors/Alarms</b> LP leak, smoke, carbon monoxide, <b>Fire Extinguisher</b> 10 B.C., <b>Ground Fault Interrupter, Light</b> center high-mount brake lamp, <b>Light(s)</b> courtesy w/wall switch(es), <b>Seat Belts</b> cab, 3-point, <b>Seat Belts</b> lap (in selected areas), <b>Window</b> escape, <b>Windshield</b> laminated safety glass	\$	\$	\$	\$
<b>WARRANTY</b> <sup>9</sup>				
<b>12-month/15,000-mile basic limited warranty, 36-month/36,000-mile warranty on structure, 10-year limited parts &amp; labor warranty on roof skin</b> <sup>h</sup>	\$	\$	\$	\$

e Actual towing capacity is dependent on your particular loading and towing circumstances, which includes the GVWR, GAWR and GCWR, as well as adequate trailer brakes. Please refer to your vehicle's operator's manual for further towing information.

f Not all items available in combination. See dealer for details.

g See separate chassis warranty details provided in owner's packet.

h See your dealer for complete warranty information.

Winnebago Industries' continuing program of product improvement makes specifications, equipment, model availability and prices subject to change without notice. Comparisons to other motor homes are based on the most recent information available.

## Not all motor homes are created equal.

As you take a closer look, you'll see that there is much more to the Winnebago Journey than a long list of standard features and compelling floorplans. Beneath it all you'll find a SuperStructure® foundation of strength and durability, and Winnebago Industries' recognized service and warranty support.



### We are committed to service.

We back our motor homes with the best after-the-sale service in the industry.

- 12-month/15,000-mile basic limited warranty
- 36-month/36,000-mile warranty on structure
- Standard 10-year limited parts-and-labor roof skin warranty
- Complimentary 24-hour Roadside Assistance Program
- TripSaver Fast Track Parts. TripSaver guarantees that in-stock warranty parts ship directly to your dealer within 24 hours
- Nationwide dealer service network



### Certified quality.

Recreation Vehicle Dealer Association members annually rate RV manufacturers on the quality of their products, and on their sales and service support. Winnebago Industries has achieved the coveted Quality Circle Award every year since its inception, the only RV manufacturer to do so.



### Learn more about what sets Winnebago Industries apart.

Ask your dealer for this guide. It will help you learn what makes Winnebago Industries motor homes distinctly superior to other brands.

### Warning: Joining WIT has been known to cause excessive fun.

Winnebago-Itasca Travelers (WIT) is a club for owners of Winnebago Industries motor homes. WIT is a great way to meet people and offers you:

- Caravans and rallies
- Local and state group activities
- Benefits for RVers

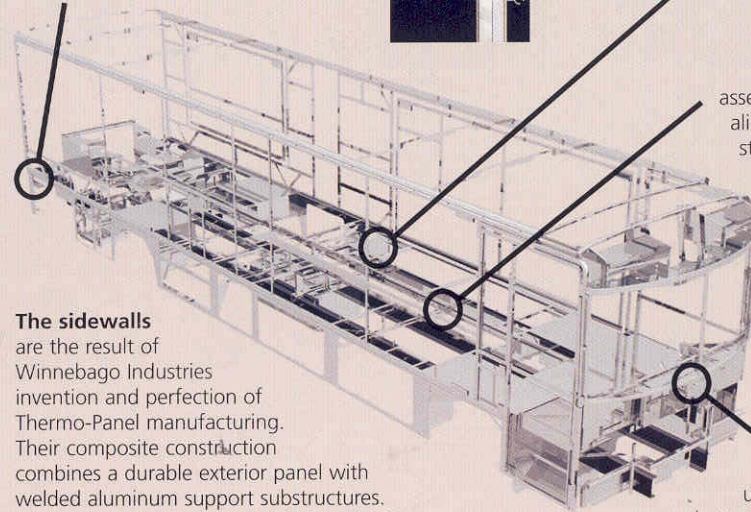


is the term given to Winnebago Industries' structural motor home design and construction. Rather than a single component, it is the culmination of design integration that incorporates steel and aluminum substructures; composite design laminated floor risers; interlocking joint technology; and Thermo-Panel® floor, roof and sidewalls to form a high-strength, durable vehicle body.

**Interlocking joint construction** utilizes advanced extruded aluminum structural components to create integrated floor-to-sidewall and sidewall-to-roof joints. This design effectively distributes the weight of the walls and roof, making a stronger and more durable body than competitor designs that rely on screws to carry the weight.



**Laminated risers** feature a welded aluminum core for superior strength and provide a stable base for the floor structure and storage compartments.



**The foundation substructure** assembly is precision-aligned to maximize strength and cross-coach support as well as durability.

**The sidewalls** are the result of Winnebago Industries invention and perfection of Thermo-Panel manufacturing. Their composite construction combines a durable exterior panel with welded aluminum support substructures. The substructures are embedded in a high-density block foam insulation core to create a strong, durable, yet lightweight sidewall.

**Critical steel components** are treated using an advanced electrodeposition coating process that provides superior corrosion protection.

### Built to a higher standard.

Journey features a crowned, one-piece fiberglass roof skin backed with a 10-year limited parts-and-labor roof skin warranty. Fiberglass offers superior strength, attractiveness and durability over rubber roofs found on many competitive models. Over time, rubber roofs are susceptible to chalking, streaking and degradation, and have less puncture and tear resistance than fiberglass.



One-year-old competitor's rubber roof



One-year-old Winnebago Industries fiberglass roof



© 2003 Winnebago Industries, Inc., Forest City, IA 50436. Printed in USA.

Seat belts are your most important hookup. Always buckle up.

NYSE listing: WGO

Visit us at [www.winnebagoind.com](http://www.winnebagoind.com)