

 BEAVER 2005 MONTEREY®

ONE COACH AT A TIME.

YOURS.



 BEAVER 2005 MONTEREY



When a company treats you this well, you can't help being loyal.

Just ask Melvin and Patricia Engelke. They're on their fourth Beaver coach. Yes, they'll tell you all the things they like about it — the roomy floorplan, elegant woodwork, powerful engine and excellent handling. And they'll tell you about the great friends they've made all over North America. But then, they'll tell you what made them Beaver owners for life.

You see, six years ago, the Engelkes were traveling in California when Melvin became ill and flew home to Florida. "A day later, I was diagnosed with Hodgkin's disease and my coach was 3,000 miles away," says Melvin. "What did Beaver do? They picked it up, took it to Oregon for maintenance, and then drove it across the country and parked it in front of my house.

"These are good people," he concludes. "They've always stood by me and helped me out."

We're happy to report that Melvin is feeling great now and traveling out West — from New Mexico to California to Washington — and every great golf course along the way.





Thank you for taking a closer look at the 2005 edition of the Monterey. This impressive motorcoach features the legendary refinement you expect from a Beaver, at a value that's sure to surprise you. It all starts with an exclusive, custom-built Roadmaster M-Series chassis with Cushion Air Glide suspension, for the very best ride and handling

in its class. Couple that with a gutsy Caterpillar® C-9 350 HP engine (or the even more impressive 400 HP option), and you've got the power to dominate any road. As you can see here, the rich luster of deluxe full-body paint is the perfect finishing touch — and an excellent indicator of the luxury that awaits you inside the coach.

Designed to raise your standard of living.



Welcome to a world where the accent's on style and craftsmanship. You'll be amazed at the many exquisite details that make this coach a home. To begin with there's the one-of-a-kind woodwork, featuring solid wood arched raised panel cabinet doors and highly decorative hardwood slide-out fascia trim. In the dining area you'll enjoy mealtimes at the ingenious legless solid surface table with a convenient side-slide adjustment and two beautifully upholstered chairs. Other

highlights include plush carpeting, sleek ceramic tile flooring, stylish window treatments and halogen lighting. Above the cockpit, you'll find the entertainment features, including the 24" flatscreen TV, or optional 32" LCD TV, as well as the exciting optional home theater system with VCR/DVD player and the optional fully automatic digital satellite system. Also shown above is the optional extra-wide co-pilot seat with a power footrest for the ultimate in comfort and versatility.



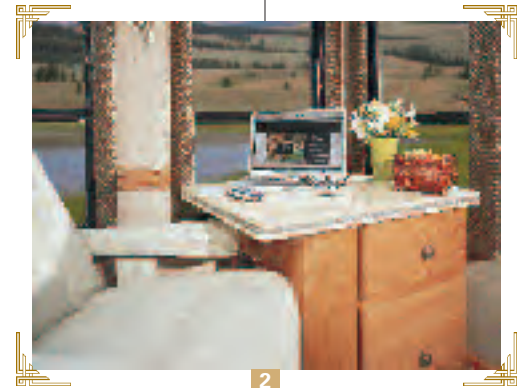


40' Laguna IV shown in Gold Coast décor with Natural Cherry cabinetry



40' Montclair IV shown in Everglades décor with Natural Cherry cabinetry

1



2

1. Shown here is the living area in Everglades décor with Natural Cherry cabinetry. We'd also like to point out the spaciousness of the floorplan and its abundance of windows and convenient kitchen work areas. **2.** On most floorplans, the OptimaLeather™ swivel rocker is accompanied by this versatile solid surface living area table with handy storage drawers and bottom file drawer. With its electrical and phone outlet and large desktop area, it can function as a computer table or workstation.

40' Laguna IV shown in Gold Coast décor with Natural Cherry cabinetry



All wrapped up with impeccable styling.

Form and function come together beautifully in the Monterey's kitchen, featuring a glossed solid surface countertop with an attractive edge detail and an exquisite Corian® and mirror backsplash design with metal insert. The many conveniences include pantry storage, a large pot and pan drawer, cutting boards and built-in storage for the sink covers. You'll enjoy top-of-the-line appliances

including the high-output recessed cooktop and a two-door refrigerator with ice maker. Some impressive optional upgrades are also available, including a four-door refrigerator and a stylish stainless steel microwave. On the far right, you see the cabinet for the optional combination washer/dryer — giving you even greater freedom and convenience while you're on the road.





40' Montclair IV shown in Everglades décor with Natural Cherry cabinetry

40' Laguna IV shown in Gold Coast décor with Natural Cherry cabinetry



All the elements that create a home.

The Monterey's distinctive decor continues in the bedroom, where you'll find a queen bed, or optional king bed, with a beautiful bedspread and decorative pillows. Storage space is plentiful, with overhead cabinets, a dresser and a large cedar-lined wardrobe with mirrored doors. Other highlights include the attractive light fixtures and stylish window treatments with blackout shades

for the room darkening you need for a good night's sleep.

In the bathroom, you'll love the contemporary styling of the high-gloss solid surface countertop with integrated sink. A new highlight this year is the Corian® mirrored backsplash with decorative metal insert. And it's beautifully complemented by the glass shower door with convenient towel bars.

1. The bedroom features a 20" flatscreen TV and an optional combination VCR/DVD player. On the 40' Montclair floorplans, the TV is conveniently housed in a cabinet at the foot of the bed. **2.** The opposing side of the TV wall features a bench seat as well as plenty of storage space, including two cabinets and a half closet which faces a full-size closet, also shown here.



1



2



1. This optional combination washer/dryer makes an excellent choice, adding greater freedom and convenience to your life on the road. **2.** This optional central vacuum system with deluxe attachments makes it easier than ever to keep your coach tidy and free of dust and pet fur.

Now it's time for a drive.



Just picture yourself behind the wheel of one of the most sophisticated coaches ever designed. Before you is the automotive dash with silver circuit board instrumentation panel, spun aluminum gauges and gun metal bezels. The monitor displays information from the rear vision system as well as the Aladdin™ video coach monitoring system — with readings for engine temperature, tank levels, trip information and much more. The functional black VIP lighted Smartwheel® puts the switches for the wipers, ICC and cruise control right at your fingertips, and adjustable accelerator and brake pedals allow you to find the perfect driving position for your height. The 2005 Monterey also features a number of state-of-the-art options, including cellular wiring and

antenna, the acclaimed Sirius satellite radio system and the incomparable OnStar® system, giving you live, personal access to a world of information, as well as 24-hour emergency roadside assistance.

Above, you can see some of the highlights of the coach's exterior, starting with the lustrous finish provided by the laminated gel coat sidewalls and the deluxe, full-body paint. The storage bays move with the slide-outs on the roadside and are stationary on the curbside — and they feature doors with hydraulic arm lifts and locking handles. Other details include optional keyless entry, polished aluminum wheels and a full-length Beaver mud flap.





1



2

1. This insulated systems compartment gives you easy access to the coach's hook-up functions and includes a convenient water sprayer. **2.** Our optional storage bay slide-out tray makes it easier than ever to reach the items you stow underneath the coach.

The choice is yours.



Beaver coaches have always been known for giving you more ways to help you create a coach that's distinctively your own. This year, the Monterey is available in four color schemes with stunning fabric combinations.

In addition, you have your choice of a wide selection of innovative double, triple and quad slide-out floorplans, in lengths ranging from 34' to 40', with numerous furniture options fit your lifestyle. Now, it's all up to you.

BETTER STAIN PROTECTION



Manufactured in, not added on. For added protection against stains, Dupont Teflon® soil repellent is applied to virtually all upholstery fabric during the finishing process for superior coverage.*

*Brand and application of upholstery fabric protection may vary depending on date recreational vehicle was manufactured.



“Cabernet”

CARPET

DINETTE

BEDSPREAD

SOFA



“Jopaz”

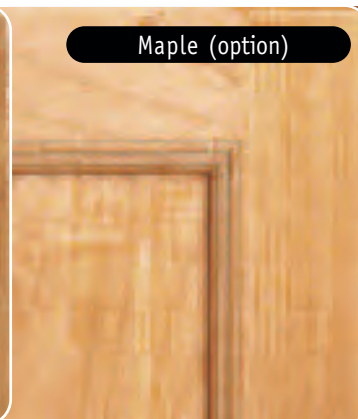
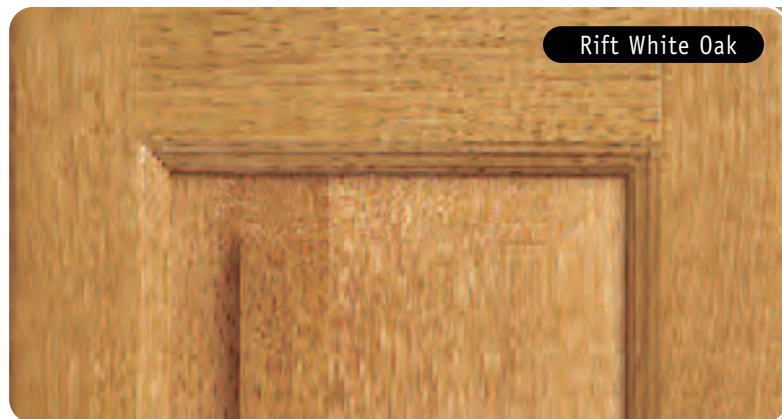
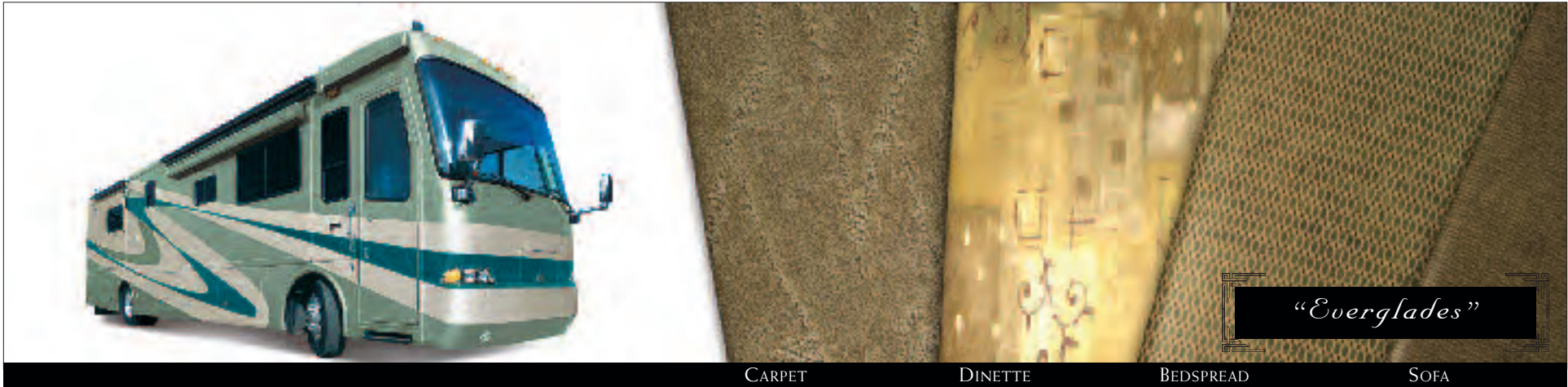
CARPET

DINETTE

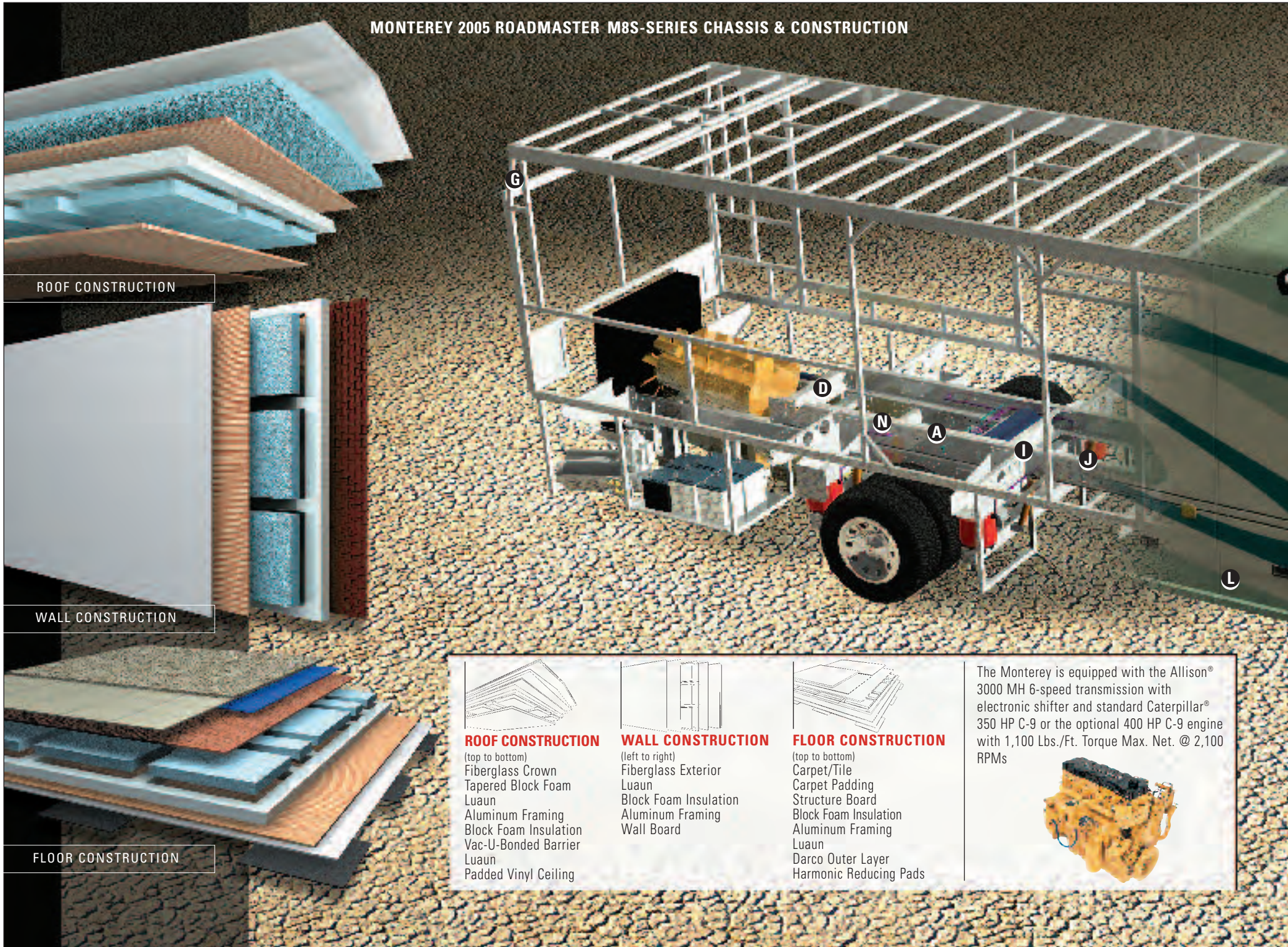
BEDSPREAD

SOFA

Note: Interior and exterior colors depicted are a reasonable representation though they may not be an exact match of the actual colors due to variances in processing and production. See your dealer for actual fabric and paint chip samples.



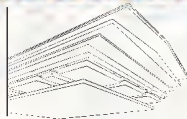
MONTEREY 2005 ROADMASTER M8S-SERIES CHASSIS & CONSTRUCTION



ROOF CONSTRUCTION

WALL CONSTRUCTION

FLOOR CONSTRUCTION



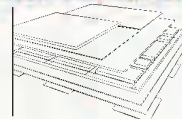
ROOF CONSTRUCTION

(top to bottom)
 Fiberglass Crown
 Tapered Block Foam
 Luaun
 Aluminum Framing
 Block Foam Insulation
 Vac-U-Bonded Barrier
 Luaun
 Padded Vinyl Ceiling



WALL CONSTRUCTION

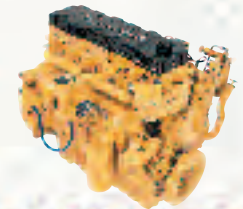
(left to right)
 Fiberglass Exterior
 Luaun
 Block Foam Insulation
 Aluminum Framing
 Wall Board



FLOOR CONSTRUCTION

(top to bottom)
 Carpet/Tile
 Carpet Padding
 Structure Board
 Block Foam Insulation
 Aluminum Framing
 Luaun
 Darco Outer Layer
 Harmonic Reducing Pads

The Monterey is equipped with the Allison® 3000 MH 6-speed transmission with electronic shifter and standard Caterpillar® 350 HP C-9 or the optional 400 HP C-9 engine with 1,100 Lbs./Ft. Torque Max. Net. @ 2,100 RPMs



Where coach and road meet in perfect harmony.



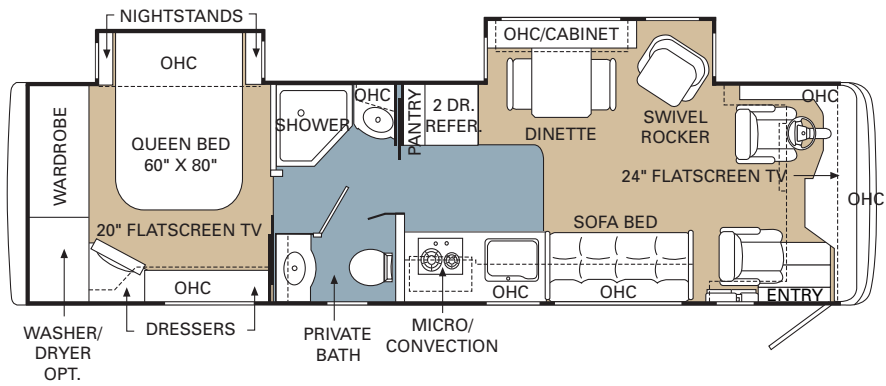
Allow us to introduce the Roadmaster M8S-Series chassis. This remarkable feat of engineering was designed with one thing in mind: your comfort. In fact, a Beaver coach with the Roadmaster M8S-Series chassis is the only combination in the industry that's been fine-tuned to reduce the harmonics in the coach. Why? Because reducing harmonics has been proven to help eliminate road fatigue during long drives. In addition, Beaver coaches carry 70% of their weight below the floor, creating a more stable and comfortable ride.

- A. Frame rails made of high-yield steel for superior strength
- B. New larger tires - Goodyear 295/80R/22.5H
- C. New dual air drum brakes for superior stopping power
- D. 3-point hydraulic leveling system
- E. Aluminum framed laminated high-gloss molded fiberglass sidewalls
- F. Molded fiberglass one piece roof
- G. Front and rear molded fiberglass caps with integrated bumpers
- H. Laminated fiberglass underbelly
- I. Aluminum framed laminated floor on steel trusses
- J. Laminated luaun floor with foam insulation
- K. Storage bays remain stationary under passenger side slide
- L. Carpeted basement storage bays
- M. Full-body paint
- N. Optional air leveling and hydraulic

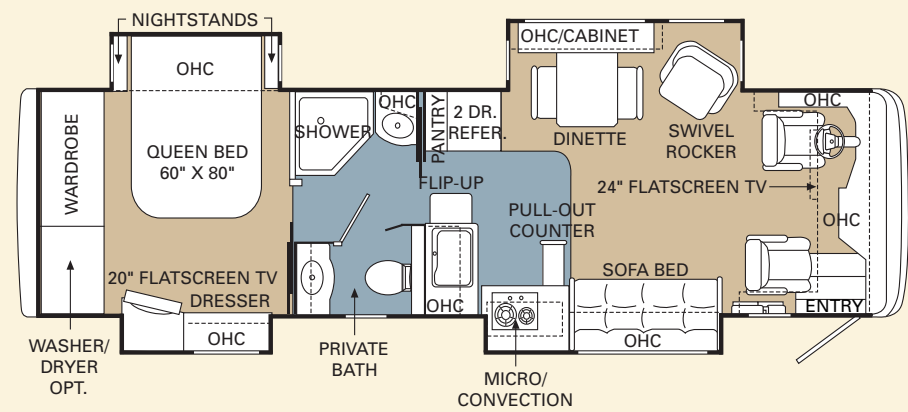
 **Roadmaster**
Chassis

2005 Monterey Floorplans

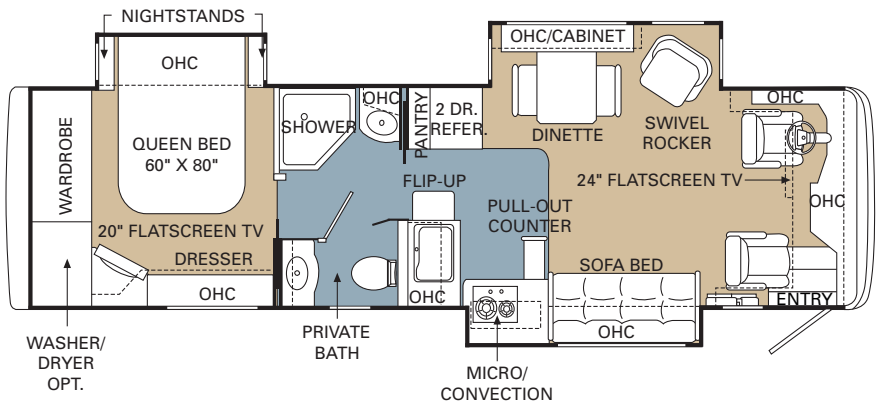
● Carpet ● Tile



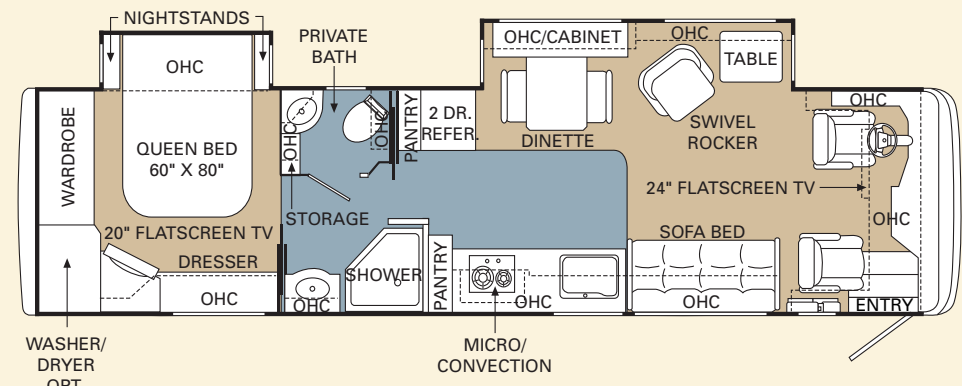
34' Bayview II Floorplan



34' Bayview IV Floorplan



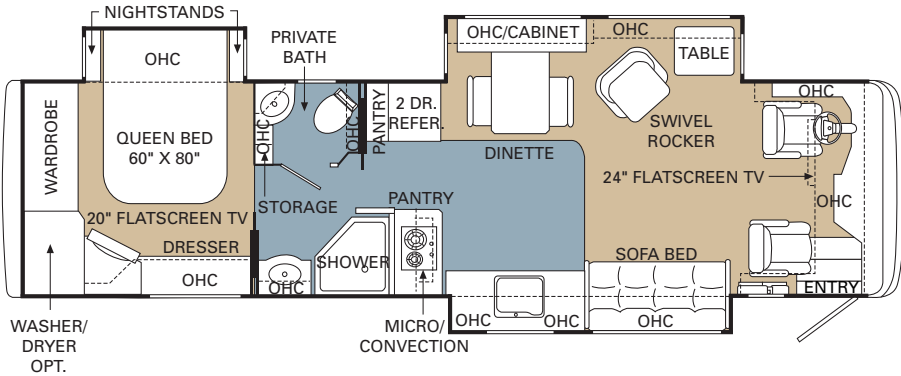
34' Bayview III Floorplan



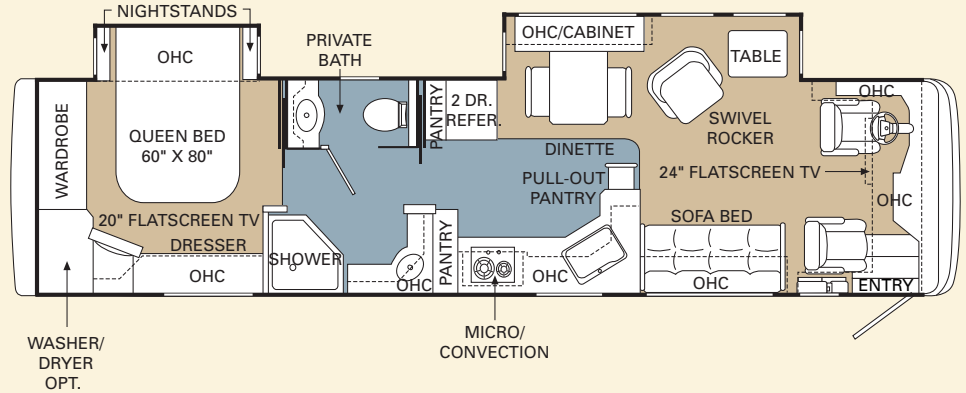
36' Ventura II Floorplan

2005 Monterey Floorplans

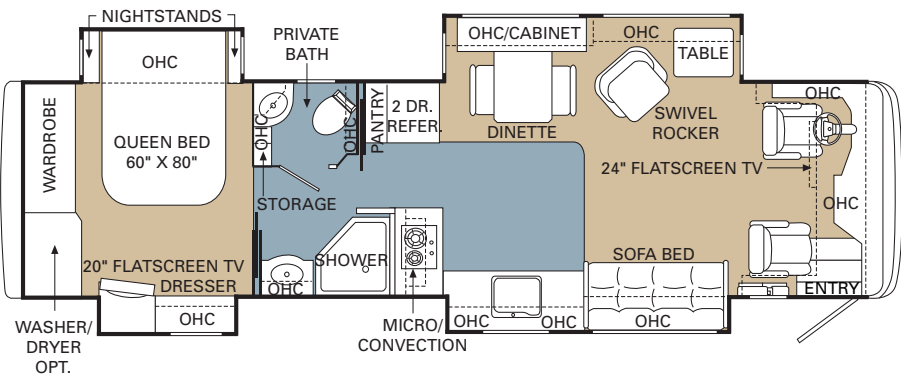
● Carpet ● Tile



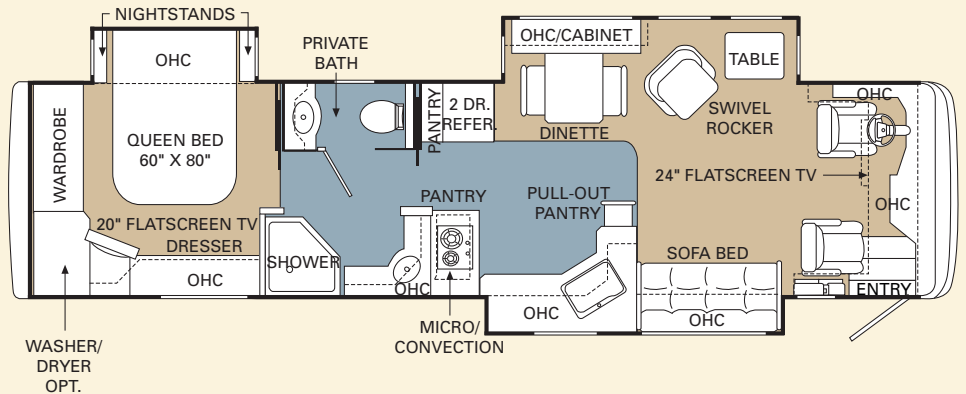
36' Ventura III Floorplan



38' Huntington II Floorplan



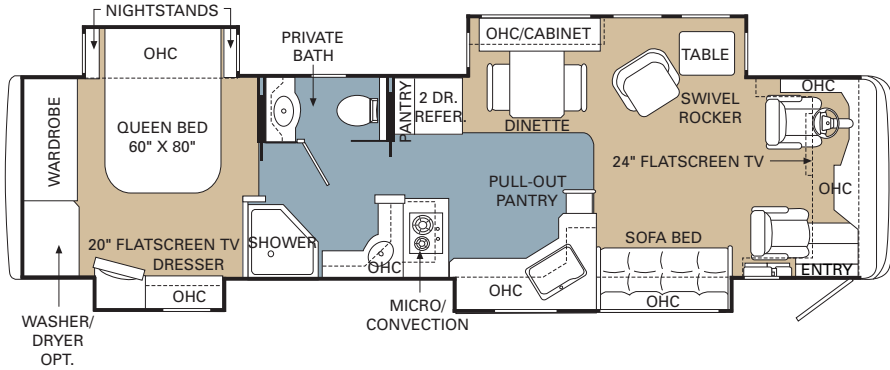
36' Ventura IV Floorplan



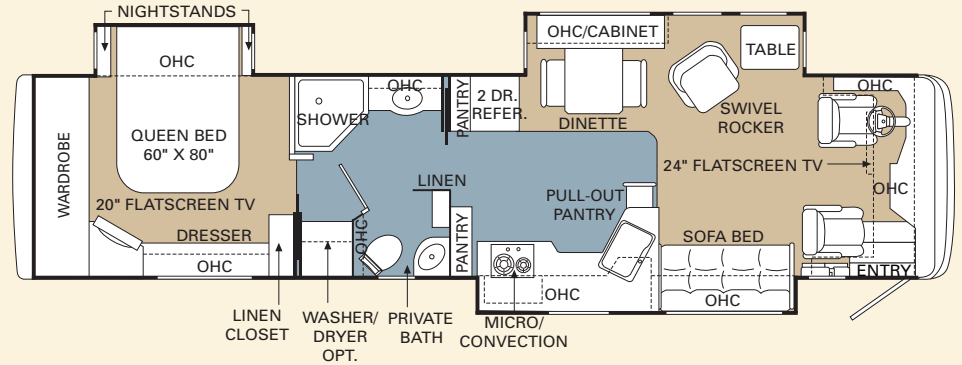
38' Huntington III Floorplan

2005 Monterey Floorplans

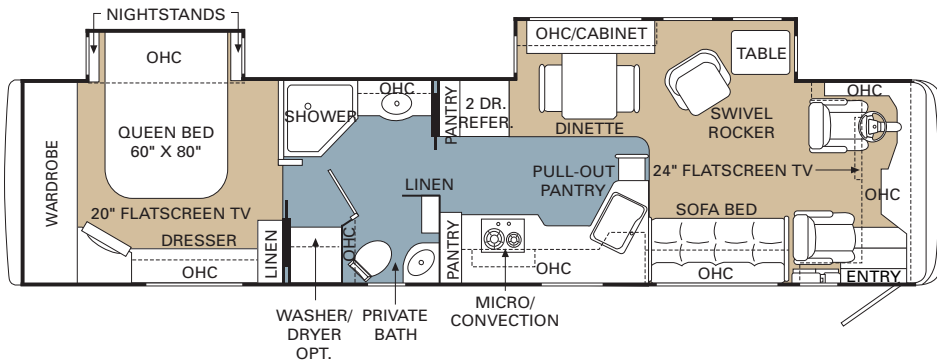
● Carpet ● Tile



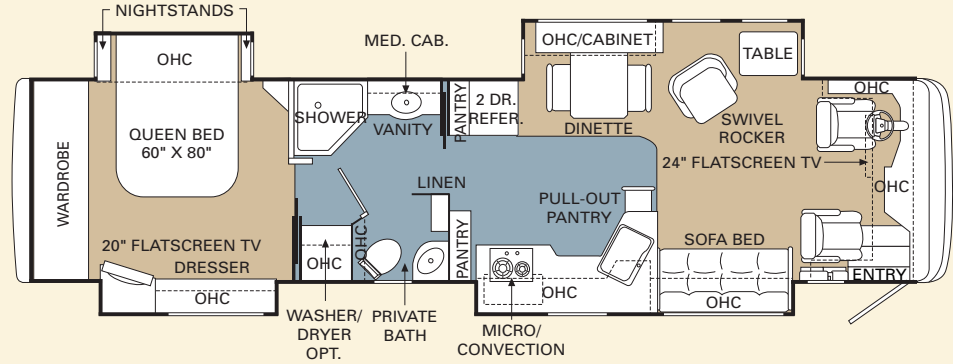
38' Huntington IV Floorplan



40' Laguna III Floorplan



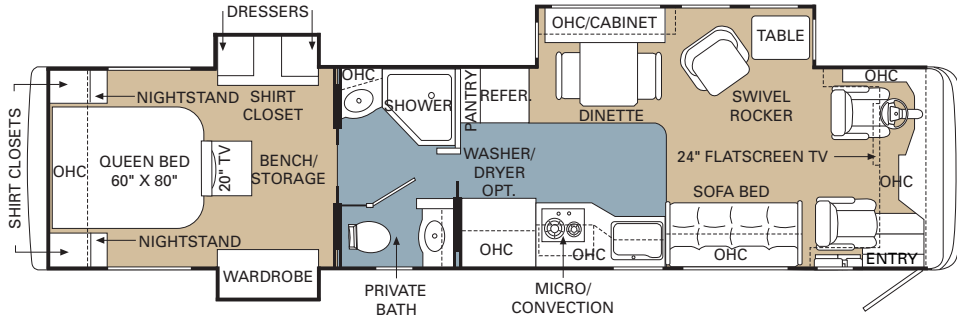
40' Laguna II Floorplan



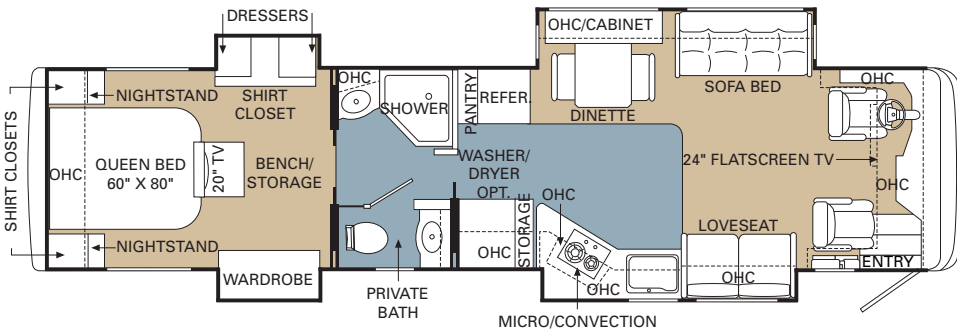
40' Laguna IV Floorplan

2005 Monterey Floorplans

● Carpet ● Tile

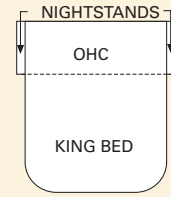


40' Montclair III Floorplan

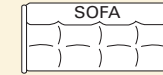


40' Montclair IV Floorplan

2005 Monterey Floorplan Options



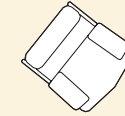
King Bed:
 Bayview II, III, IV
 Ventura II, III, IV
 Huntington II, III, IV
 Laguna II, III, IV
 Montclair III, IV



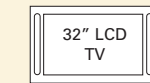
OptimaLeather™ Sofa with Drawer:
 Bayview II, III, IV
 Montclair IV



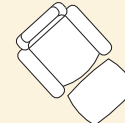
Booth Dinette:
 Bayview II, III, IV
 Ventura II, III, IV
 Huntington II, III, IV
 Laguna II, III, IV
 Montclair III, IV



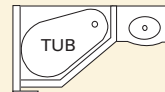
OptimaLeather™ Recliner:
 Bayview II, III, IV
 Ventura II, III, IV
 Huntington II, III, IV
 Laguna II, III, IV
 Montclair IV



32" LCD TV
 Bayview II, III, IV
 Ventura II, III, IV
 Huntington II, III, IV
 Laguna II, III, IV
 Montclair III, IV



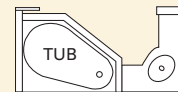
OptimaLeather™ Euro-Recliner with Ottoman:
 Bayview II, III, IV
 Ventura II, III, IV
 Huntington II, III, IV
 Laguna II, III, IV
 Montclair IV



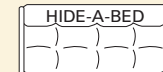
Bathtub:
 Laguna II, III, IV



Fabric or OptimaLeather™ Magic Bed Sofa:
 Bayview II, III, IV
 Montclair IV



Bathtub:
 Huntington II, III, IV



Fabric or OptimaLeather™ Hide-A-Bed Sofa with Air Mattress:
 Bayview II, III, IV
 Montclair IV



Wrap-Around Computer Table:
 Ventura II, III, IV
 Huntington II, III, IV
 Laguna II, III, IV
 Montclair III



OptimaLeather™ Loveseat with Drawer:
 Montclair IV



Kitchen Island:
 Montclair IV

2005 Monterey Specifications

Body Construction

Standard Features

Aluminum Framed Superstructure
 Seamless One-Piece Molded Crowned Fiberglass Roof
 Laminated Gel Coat Fiberglass Sidewalls
 All Season Foam Insulated Roof
 One-Piece Front and Rear Molded Fiberglass Caps
 One-Piece Windshield
 Chrome Power Controlled Heated Exterior Mirrors
 Aluminum Framed Laminated Floor on Steel Trusses
 Foam Insulated Underbelly
 Driving Lights
 Roof-Mounted Dual Trumpet Air Horns
 Basement Doors with Hydraulic Arm Lifts, Locking Handles
 Storage Bays Extend with Slide-Out on Roadside
 Stationary Storage Bays on Curbside
 Carpet-Lined Storage Compartments
 Full-Length "Beaver" Mud Flap
 Deluxe Full-Body Paint
 Rear Ladder
 Power Entry Steps

Options

3M® Film Front Mask
 Exterior Sunscreens
 Insulated Aluminum Side-Hinged Baggage Doors under Passenger Side Front Slide-Out

Storage Bay Slide-Out Tray; (Full Pass-Through - Laguna and Montclair) (One Side - All)

Chassis/Engine/Suspension

Standard Features

Roadmaster M8S-Series Chassis
 Caterpillar® 350 HP C-9 and Allison® 3000 MH 6-Speed Transmission with Electronic Shifter; 1,100 lbs./ft. Torque Max. Net @ 1,400 RPMs; 537"/8.8L Cubic Inch Displacement
 Rear Axle Ratio: 4.30:1
 160 Amp Alternator
 Dual Fuel Fill
 Polished Aluminum Wheels
 Tires: 295/80R/22.5
 Cushion Air Glide Suspension with Eight Air Bags and Eight Shock Absorbers
 Anti-Lock Braking System with Full Air Brakes (Drum)
 Auto Slack Adjusters
 Automatic Traction Control
 Pac Brake
 Fuel/Water Separator
 Air Cleaner Restriction Indicator
 Engine Block Heater
 Hydraulic Leveling System
 10,000 Lb. Hitch Receiver and 7/4 Way Trailer Plug

Options

Caterpillar® C-9 400HP Engine and Allison® 3000 MH 6-Speed Transmission with Electronic Shifter; 1,100 lbs./ft. Torque Max. Net @ 2,100 RPMs; 537"/8.8L Cubic Inch Displacement
 Dual Leveling (Air/Hydraulic)
 Air Leveling

Cockpit

Standard Features

Fiberglass Automotive Dash with Silver Circuit Board Instrumentation Panel, Spun Aluminum Gauges with Black Lettering and Gun Metal Bezels
 Rear Vision System with Color Monitor
 In-Dash AM/FM Stereo with CD/Cassette Player
 Aladdin™ Video Coach System Monitor with Audible Alarm Tone
 Adjustable Accelerator and Brake Pedals
 Multiplug in Dash Area
 CB Radio Prewire
 Cup Holders
 Intermittent Windshield Wipers
 Audible Turn Signals
 Black VIP Lighted Smartwheel® with Controls for Windshield Wipers, ICC and Cruise Control
 Power Steering
 OptimaLeather™ 6-Way Power Pilot and Co-Pilot Seats
 Air Powered Front Entry Step Cover
 Carpet Pilot and Co-Pilot Floor Mats
 Carefree® Scissor Sunvisors
 Manual Privacy Drapes

Options

Power Footrest on Co-Pilot Seat
 Extra-Wide Co-Pilot Seat with Power Footrest
 Power Privacy Cab Drapes
 Power Sunvisors with Driver and Passenger Switches
 6-Disc CD Changer (Deletes Cassette)
 CB Radio

OnStar® Mobile Assistance (Requires Subscription)

Sirius Satellite Radio System (Requires Subscription)

Cellular Antenna and Wiring

Appliances and Accessories

Standard Features

Two-Door Refrigerator with Ice Maker and Raised Panel Doors
 High-Output Two-Burner Recessed Cooktop
 Convection Microwave with Touch Control
 24" Flatscreen TV with Remote in Living Area
 20" Flatscreen TV with Remote in Bedroom
 TV Antenna with "Antenna Up" Light on Dash
 Stereo VCR
 Bedroom Speakers with Switch for Radio Cut-Off
 Prep for Satellite Receiver
 Washer/Dryer Prep

Options

Combination Washer/Dryer
 32" LCD TV with Remote Control in Living Area
 Sony® Home Theater System with DVD/VCR Combo Unit and Flush Speakers (Deletes Standard VCR)
 VCR/DVD Combo Unit in Bedroom
 Fully Automatic Digital Satellite System
 Stainless Steel Microwave
 Norcold® Four-Door Refrigerator with Ice Maker and Raised Panel Doors
 Norcold® Four-Door Stainless Steel Refrigerator with Ice Maker
 Recessed 17" Cooktop with Oven
 Central Vacuum System

*Interior***Standard Features**

Raised Panel Rift White Oak Cabinetry

Solid Wood Arched Raised Panel Cabinet Doors with Adjustable Door Hinges

Lined Cabinet Shelves

Low-Friction Roller Drawer Guides

Padded Vinyl Ceiling

Vinyl Wallboard Wall Treatment with Chair Rail in Living Area

High-Gloss Solid Surface Galley Countertop with Solid Surface Edge

Fiberglass Galley Sink

High-Gloss Solid Surface Bath Countertop with Solid Surface Edge and Integrated Sink

Corian® and Mirror Galley Backsplash Design with Decorative Metal Insert

New Corian® Vanity Backsplash with Decorative Metal Insert

Large Pot and Pan Drawer in Kitchen Area

Cutting Boards in Kitchen

Built-In Storage Area for Kitchen Sink Covers

Pullout Pantry Added to Forward Side of Galley (Laguna and Huntington Floorplans)

Cedar-Lined Wardrobe Closet with Mirrored Wardrobe Doors

Medicine Cabinet

Bathroom Vanity Mirror

Decorative Hardwood Slide-Out Fascia Trim

Bedroom Dresser (N/A: 40' Montclair III and IV)

Bedsread with Pillows

Day/Night Shades with Blackouts in Bedroom

Mini Blinds in Living Room, Kitchen and Bathroom

Plush Carpet in Living Area and Bedroom

Ceramic Tile in Entry, Kitchen and Bath Area

Options

Decors: Cabernet, Gold Coast, Topaz and Everglades

Gloss Finish Cabinetry Choices: Rustic Cherry, Tight Knot Walnut, Maple

Solid Surface Galley Sink

Day/Night Shades in Living Area

*Furniture***Standard Features**

Queen Mattress

Fabric Sleeper Sofa with Drawer (Driver Side - 40' Montclair IV, All Others Passenger Side)

OptimaLeather™ Swivel Rocker (Driver Side) (N/A: 40' Montclair IV)

Fabric Loveseat (Passenger Side - 40' Montclair IV)

Solid Surface Fixed Living Area Table (N/A: 34' Bayview II, III, IV)

Side-Slide, Solid Surface Fixed Dining Table with Two Dinette Chairs and Two Folding Chairs

Options

King Bed (72" X 80")

OptimaLeather™ Euro-Recliner with Ottoman (Driver Side)

OptimaLeather™ Recliner (Driver Side)

OptimaLeather™ Loveseat with Drawer (Passenger Side - 40' Montclair IV)

OptimaLeather™ Sofa with Drawer (Passenger Side - 34' Bayview II, III, IV; Driver Side - 40' Montclair IV)

Fabric Magic Bed Sofa (Passenger Side - 34' Bayview II, III, IV; Driver Side - 40' Montclair IV)

OptimaLeather™ Magic Bed Sofa (Passenger Side - 34' Bayview II, III, IV; Driver Side - 40' Montclair IV)

Fabric Hide-A-Bed Sofa with Air Mattress (Passenger Side - 34' Bayview II, III, IV; Driver Side - 40' Montclair IV)

OptimaLeather™ Hide-A-Bed Sofa with Air Mattress (Passenger Side - 34' Bayview II, III, IV; Driver Side - 40' Montclair IV)

Booth Dinette

Kitchen Island Galley Cabinet (40' Montclair IV)

Wraparound Computer Table (Requires Driver Side Recliner) (N/A: 34' Bayview II, III, IV)

*Electrical Systems and Lights***Standard Features**

50 Amp 120V Distribution Panel and Cord

Locking Battery Disconnect Switch inside Coach

Battery Disconnect Switch in Battery Compartment

Onan® 8.0 kW QD Generator with Hour Meter

Surge Protector

2,000 Watt Inverter with Auto Generator Start and Remote

Solar Panel with Regulator

Solar Connector

Two 12V Deep Cycle Chassis Batteries

Four 6V Deep Cycle Coach Batteries

Lights in Outside Storage Compartment

120V Receptacle in Storage Compartment

Recessed Stepwell Lights

Decorative Lighting in Bedroom and Living Area

Cosmetic Vanity Light

Halogen Lights in Dinette Area Ceiling

Halogen Lights under Overhead Cabinets

Halogen Lights in Living Area Ceiling

Fluorescent Light in front of Refrigerator, Bath Area and Bedroom

Computer Hook-Up with Phone Jack at Dinette Area

Pilot/Co-Pilot Map Lights

Porch Light

Options

Power Cord Reel

*Plumbing and LP Systems***Standard Features**

Manifold Water Control System

Kitchen Faucet with Pullout Sprayer

Water Pump Switches in Galley, Bath and Water Bay

Water Purifier in Ice Maker Line

China Toilet

No-Fuss Flush Black Holding Tank Rinsing System

Sewer Hose Connection inside Water Bay

Insulated Systems Compartment with Easy Access to Hook-Ups

Water Sprayer in Water Bay

Pressurized Water Fill

Soap Dispenser in Vanity

10-Gallon LP Gas/Electric Water Heater with Electronic Ignition

Fiberglass Shower

Glass Shower Door

Tank Display Module on Water Service Bay

Venturi Style Tank Vents on Roof

Options

Bathtub (Huntington and Laguna Floorplans)

Heating, Vents and Air Conditioning

Standard Features

Two Duo Therm 15M BTU Ducted Low Profile Roof Air Conditioners with Ceiling Ducting and Heat Pumps

42,000 BTU Electronic Ignition Furnace

Electronic Air Conditioner/Heat Climate Control System

Dash Heating and Air Conditioner System with Defroster

12V Attic Fan with Sensor and Wall Switch in Kitchen and Private Lavatory

Options

Hydro-Hot Hydronic Heating System 50,000 BTU 5 Heat Exchangers with Chrome Exhaust Tip (34' Bayview II; 36' Ventura II; 38' Huntington II; 40' Laguna II) (Forced Option on Triple and Quad Slide-Out Floorplans)

Engine Pre-Heat (Requires Hydro-Hot Option)

Windows, Doors and Awnings

Standard Features

Radius Dual Pane Safety Glass Dark Tinted Slider Windows

Front Entry Door with Removable Screen

Tinted Skylight in Bathroom with ABS Shroud

Patio Awning with Color Coordinated Hardware

Slide-Out Topper Awnings

Options

Keyless Entry System with Pocket Remote

Remote Controlled Girard® Automatic Awning with Wind Sensor

Carefree® Eclipse Automatic Patio Awning

Carefree® Automatic Front Door Awning

Bedroom Window Awnings

Safety

Standard Features

Fire Extinguisher

Back-Up Alarm

Deadbolt Lock on Entrance Door

Lighted Interior and Exterior Grab Handle

120V GFI Protected Circuits

LP Gas Detector

Smoke Detector

Carbon Monoxide Detector

Integrated Driver and Passenger Three-Point Seat Belts

Third Brake Safety Light

Egress Window(s)

Weights

Gross Vehicle Weight Rating (Lbs.)

34' Bayview II, III, IV _____ 35,800

36' Ventura II, III, IV _____ 35,800

38' Huntington II, III, IV _____ 35,800

40' Laguna II, III, IV _____ 35,800

40' Montclair III, IV _____ 35,800

Gross Combined Weight Rating* (Lbs.)

34' Bayview II, III, IV _____ 45,800

36' Ventura II, III, IV _____ 45,800

38' Huntington II, III, IV _____ 45,800

40' Laguna II, III, IV _____ 45,800

40' Montclair III, IV _____ 45,800

Front Gross Axle Weight Rating (Lbs.)

34' Bayview II, III, IV _____ 12,800

36' Ventura II, III, IV _____ 12,800

38' Huntington II, III, IV _____ 12,800

40' Laguna II, III, IV _____ 12,800

40' Montclair III, IV _____ 12,800

Rear Gross Axle Weight Rating (Lbs.)

34' Bayview II, III, IV _____ 23,000

36' Ventura II, III, IV _____ 23,000

38' Huntington II, III, IV _____ 23,000

40' Laguna II, III, IV _____ 23,000

40' Montclair III, IV _____ 23,000

Measurements

Wheelbase

34' Bayview II, III, IV _____ 196"

36' Ventura II, III, IV _____ 220"

38' Huntington II, III, IV _____ 244"

40' Laguna II, III, IV _____ 268"

40' Montclair III, IV _____ 268"

Overall Unit (Length)

34' Bayview II, III, IV _____ 34' 10"

36' Ventura II, III, IV _____ 36' 10"

38' Huntington II, III, IV _____ 38' 10"

40' Laguna II, III, IV _____ 40' 10"

40' Montclair III, IV _____ 40' 10"

Overall Unit (Width)

34' Bayview II, III, IV _____ 102"

36' Ventura II, III, IV _____ 102"

38' Huntington II, III, IV _____ 102"

40' Laguna II, III, IV _____ 102"

40' Montclair III, IV _____ 102"

Overall Unit (Height)

34' Bayview II, III, IV _____ 12' 2"

36' Ventura II, III, IV _____ 12' 2"

38' Huntington II, III, IV _____ 12' 2"

40' Laguna II, III, IV _____ 12' 2"

40' Montclair III, IV _____ 12' 2"

Interior Height

All Monterey Models _____ 6' 7.5"

Interior Width

All Monterey Models _____ 97.5"

Tank Capacities

Water Heater

All Monterey Models _____ 10 gal.

Gray Tank

All Monterey Models _____ 58 gal.

Black Tank

All Monterey Models _____ 58 gal.

Fresh Tank

All Monterey Models _____ 100 gal.

Fuel Tank

All Monterey Models _____ 109 gal.

LP Tank**

All Monterey Models _____ 35 gal.

* Towing capacity is limited by GCWR; your vehicle's towing capacity is the difference between the GCWR and the actual vehicle weight, including all water, fuel, passengers and cargo. Your towed vehicle should be equipped with auxiliary brakes if the weight of the towed vehicle exceeds 1,000 lbs. Consult your Owner's Manual for further towing information.

** Actual filled LP capacity is 80% of listing due to safety shut-off required on tank.

Variances in the fabrication and installation of the tanks may cause the actual "usable capacity" to be greater or less than the capacities designated above.

Due to the large variety of options and floorplan arrangements available to our customers, actual weights for each unit may differ. Beaver Motor Coaches provides a weight sticker on each unit we produce, which includes that unit's tank capacities and approximate weight. Consult your local Beaver Motor Coaches dealer for unit availability and further information. The information printed in this brochure reflects product design, fabrication, and component parts at the date of printing. The manufacturer reserves the right, at any time, to make changes in product design, material or component specifications as its sole option, without notice. This includes the substitution of components of a different brand or trade name, which will result in comparable performance. All information printed in this brochure is subject to change after the date of printing. Some features shown or mentioned in this brochure are optional and may only be available in selected floorplans. Photographs may show props or decorations that are not standard equipment on Beaver Motor Coach models. Beaver Motor Coaches, the Beaver logo and its design, are registered trademarks. All other products and company names are trademarks and/or registered trademarks of their respective holders.

The actual overall length of the recreational vehicle may differ from that indicated in the brochure due to variances in the manufacturing process and/or installed components. The actual length may be greater or less than that indicated.

Welcome to the Family Advantage.

What is the Family Advantage? It's all the ways we put the strength of our family to work for yours. It's the unmatched level of teamwork, expertise and combined experience of all our companies. It's our industry-leading Roadmaster chassis and our remarkable White Glove



America. And it's why no matter where you are, there's someone standing by to talk with you 24 hours a day — to help you get the most from your time on the road.

In short, when you purchase an RV from Monaco Coach Corporation, you get a wider array



factory inspection program.

It's our ability to respond rapidly to our owner's needs, with new features and technologies. And it's our commitment to value and to giving you more RV for your money.

The most important aspect of the Family Advantage is being there when you need us. That's why our 350 qualified service centers span North

of benefits than any other manufacturer can offer. To see it all for yourself, call 1-800-634-0855 or 1-800-650-7337.

We'd love to meet you Monday through Friday for a tour of one of our state-of-the-art production facilities in Oregon or Indiana.



Warranties

12 MONTH/24,000 MILE

basic limited warranty

5 YEAR/50,000 MILE

limited warranty on aluminum or steel frame structure of sidewall, roof, front and rear cap

3 YEAR/36,000 MILE

limited warranty on Roadmaster chassis

Applies to certain models. See owner's manual for complete details.

THE BEAVER FAMILY

SANTIAM | MONTEREY | PATRIOT | MARQUIS



One Coach at a Time. Yours.™



(800) 634-0855

www.beavermotorcoaches.com

MONACO COACH CORPORATION

Monaco is traded on the New York Stock Exchange under the listing MNC
© 2004, Monaco Coach Corporation Litho in USA

1204 NPN:BROBMON

MNC
LISTED
NYSE

