

06 HORIZON®



 SMARTSPACE™

AIM FOR THE HORIZON.

As our flagship coach, it is fitting that the Horizon boasts our most advanced foundation: the Evolution™ Chassis. Developed in a joint venture with Freightliner®, this Winnebago Industries® exclusive employs one-piece formed-steel rails for increased midsection storage and greater floorplan flexibility. Every model comes equipped with luxurious amenities like stainless steel appliances, solid-wood cabinetry and ceramic tile

floorcovering. You'll really appreciate our SmartSpace™ design philosophy that makes the most of interior space by focusing on user-friendly features. We even increased the interior ceiling height to over 7'2" for more headroom and spaciousness. It all goes into making the 2006 Itasca Horizon a motor coach experience like no other.

LIVE THE GOOD LIFE.

If you have an affinity for beautiful solid-wood cabinetry, you'll absolutely adore the elegant satin look created by the catalyzed topcoat finish. The exquisite Stitchcraft furniture is custom crafted and available in UltraLeather HP.™ A sleek Euro Recliner will become your favorite place to relax. It is a standard feature on the 36RD and 40FD and is optional with an accompanying table for books and magazines on the 40KD.

You'll love watching movies in your Horizon whether you have the front overhead entertainment center or the stand-alone entertainment center on the 40FD. Both include a Sony® Home Theater Sound System for a true surround-sound experience.

Floor-ducted heating and ceiling-ducted TrueAir® residential central air conditioning provide maximum climate control. A heat pump is standard to help take the chill off cool mornings without firing up the furnace. Choose the optional ceiling fans in the bedroom and lounge area for additional cooling comfort.

For added thermal efficiency, dual-glazed, flush-mounted, windows come standard. Day/night pleated shades offer full control over light and privacy levels.

REST EASY® This multi-position lounge glides from a couch, to a recliner, to a comfortable bed at the touch of a button and is available in UltraLeather HP.



40FD VENETIAN WITH WASHED MAPLE

SONY TV The entertainment center boasts a large, flat-screen Sony TV that can be enjoyed without shoreline or generator power, thanks to the 2,000-watt inverter/charger. Enjoy more channels by adding the King-Dome® in-motion satellite system.*

*Satellite TV requires a subscription. See your dealer for details.



ENTERTAINMENT CENTER A 30" Sony TV and an available electric fireplace in the entertainment center create a cozy evening atmosphere (40FD only).



GALLEY STORAGE

A CHEF'S DELIGHT.

Horizon owners enjoy a kitchen that has it all: elegant solid-surface Corian® countertops; space-saving features like a pullout pantry; and stainless steel appliances like a 30" microwave/convection oven. The available G.E. Advantium™ Speedcook oven increases your cooking options.

Cleanups are easy in the large, stainless steel sink. It includes a Moen® faucet with pullout sprayer and a separate faucet for clear, satisfying Everpure® filtered water.

The new legless dining table is standard on the 36RD. You can choose the multifunction table that doubles as a computer desk or keep the stylish new oval dining table (NA 36RD). When it's time to set the table, you'll appreciate the full-extension drawer slides and wooden silverware tray.



REFRIGERATOR/FREEZER

Upgrade to this four-door refrigerator/freezer for additional cold storage.



FULL-EXTENSION DRAWER SLIDES Access pots and pans with ease.



DISHWASHER Make meal clean-up a snap by adding the available drawer-style dishwasher.



FINE DINING

Available dining options include: a) The BenchMark™ full comfort dinette that features taller backs, innerspring cushions, large easy-to-use flip-up storage compartments and converts into a comfy bed; b) The multifunction table that expands to seat four and doubles as a computer desk.



GOOD MORNING.

You'll love waking up in a Horizon. That's because you'll sleep better in the Sleep Number® bed. You'll also have a 20" Sharp® LCD TV, a rear stereo system and an available ceiling fan to ease you to sleep. A sensor near the bedroom TV allows you to control the front DVD/VCR combo by remote so you can easily watch your favorite movie in bed.

The bathroom offers elegant touches like ceramic tile floorcovering, Corian solid-surface countertops and a distinguished, granite-look shower surround. The available washer/dryer tucks away behind wood doors. To save space and help maintain a beautiful interior, you can add the available central vacuum system.



40FD VENETIAN WITH WASHED MAPLE



SLEEP NUMBER BED The Vantage Point Sleep Number bed by Select Comfort™ has digital hand controls that let you quickly and independently adjust each side of the bed to your ideal level of comfort and support. Your Sleep Number – the Key to a Perfect Night's Sleep.™



BATH A Moen Posi-Temp® valve regulates a consistent water temperature as you shower, even if water pressure fluctuates.



WASHER/DRYER This available combination washer/dryer features multiple wash, time and temperature cycles.

THE RIDE OF YOUR LIFE.

Rediscover the joy of traveling when you take a trip in the comfortable high-back cab seats of the Horizon. Covered in soft, UltraLeather HP™ and featuring powered, six-way pedestals and integrated seat belts, they're the perfect chairs for long days on the road.

Horizon provides a superb driving experience with a tilting, telescoping SmartWheel™ and a touchpad transmission. Dash instruments include an electronic compass, digital thermometer, an available Sony® rearview monitoring system and available side view cameras that allow you to view all sides of the coach for safer maneuvering around the campsite. Other driver conveniences include built-in defroster fans, map lights and power sunvisors.

While you drive, listen to CDs, AM/FM radio, or instant weather reports on the Sirius®* Satellite-ready RV Radio®. A steering wheel remote lets you change channels without taking your eyes off the road. Use the handheld remote to control the radio from the sofa or lounge chair. A switch lets you power the dash radio from the house batteries when parked. The Horizon also provides the convenience of a touchpad entry and keyless remote.

*Sirius Satellite radio not available in Canada.



DASH The Horizon includes a six-month complimentary subscription when you choose the Sirius Satellite radio* providing 120 channels of digital entertainment.

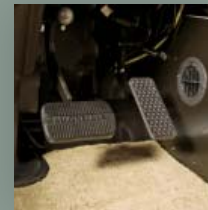


TRUELEVEL To eliminate the guesswork, our exclusive TrueLevel holding tank monitoring system incorporates Mirus™* detector cells that detect liquid levels from outside the tank. No probes mean no more corrosion or clogging, just accurate readings time after time.

*Mirus is a trademark of Material Sciences Corporation.



KEYLESS ENTRY Unlock the door and storage compartments using the keyless remote.



PEDALS

The accelerator and anti-lock air brake pedals adjust to fit each driver.



TRIPTEK™

Collect, analyze and save vehicle data and travel information with the available TripTek computer.



ONE PLACE™

Important switches, gauges and levels are mounted in this convenient systems center.



TWO-WAY RADIOS

A set of four available two-way radios comes in a built-in charging station.



POWERLINE®

This energy management system monitors electrical usage

and automatically cycles appliances on and off to prevent power overloads.



TRUEAIR

The residential central air conditioning system features a Coleman®-Mach® cooling unit in the basement that cools 40% faster and runs 10% quieter than roof-pod units. A new two-stage, dual-output furnace provides quieter operation and more consistent floor-ducted heating.

SMART STORAGE.™

Storage is always at a premium in a motor coach. That's why we studied the way motor home enthusiasts use their coaches and created Smart Storage, a more convenient and functional way to store your gear.

One example of Smart Storage is the available folding ladder (NA 36RD) that fits into a sleek storage sleeve when you're on the road. We also added additional straps and attachment points to existing compartments to hold key motor home tools and accessories.

StoreMore® plays a critical role in Smart Storage with large exterior storage compartments that extend with the slideroom for easy access.

And while hookups can be a hassle in some coaches, the Horizon places all electrical and plumbing connections in one convenient location with color-coded labels for pain-free service. This includes a hookup for a portable satellite dish.

Your travels are further enhanced with the standard electric-powered awnings, an available sunscreen, a screen door and a sturdy holder to keep the entrance door open.



STOREMORE® Storage compartments move with the slideroom to make your gear readily accessible. A powered slideout locking system on front slideouts provides peace of mind.



ENTERTAINMENT CENTER Your exterior entertainment center can be enhanced with a 20" TV/DVD player.



SMART STORAGE
Available storage enhancements include a convenient sliding storage box (NA 36RD) and a slideout tray.

SMART STORAGE



LADDER A specially designed sleeve provides quick access to the available folding step ladder (NA 36RD).



SERVICE CENTER
The QuickPort® service connection hatch is fast and simple, allowing the bay door to close with hookups connected. Plus, the QuickConnect® coupling valve allows for quick, and easy connections to the waste dump.

EVOLUTION[™]

CHASSIS



THE LEADER AT EVERY TURN[™]



EVOLUTION CHASSIS

The Horizon owes its smooth ride and uncompromised driving performance to the exclusive Evolution Chassis. This joint venture with Freightliner represents the next generation of diesel pusher technology. It features one-piece formed steel chassis rails that are 25% thicker than traditional raised-rails for increased strength, improved performance, and expanded midsection storage. This revolutionary design also provides better weight distribution and greater floorplan flexibility.

Power is also essential, which is why the 36-foot models feature a 350-hp Caterpillar[®] C7, turbo-charged, 7.2L diesel-engine. 40-foot models boast a powerful 400-hp Cummins[®] ISL, turbo-charged 8.9L diesel engine that flattens hills and lets you haul the biggest toys with ease.

Additional high-performance components include an Allison[®] 3000 MH six-speed transmission, independent front suspension and an impressive 56° wheel cut.

THE EVOLUTION CHASSIS OFFERS MORE THAN EVER BEFORE:

- 10,000-lb. hitch
- Engine exhaust/compression brake
- Dual fuel fills
- Automatic hydraulic leveling jacks (available)
- Formed steel rails
- 400-hp Cummins ISL on 40-foot models

AUXILIARY AIR

An auxiliary air manifold with detachable hose is great for inflating tires and toys.



NEWAY[®] REAR AIR SUSPENSION

A large air spring over each rear tire cushions the vehicle body from bumps in the road, making you feel like you're riding on air.

06 FLOORPLANS

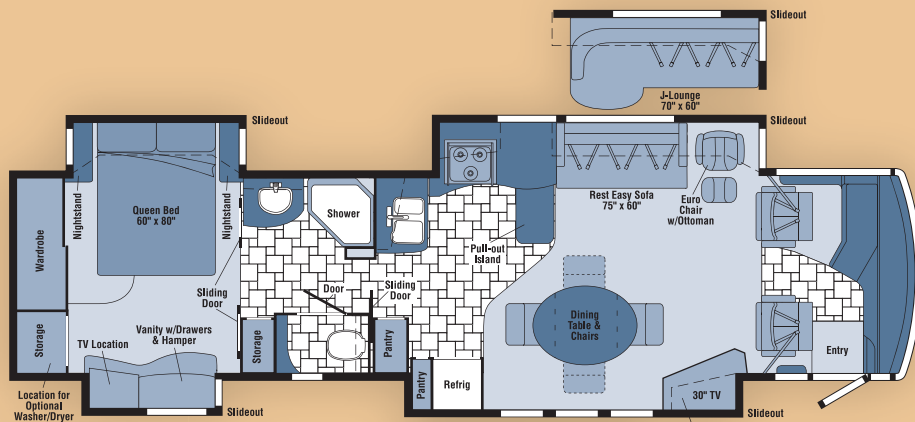


Ceramic Tile Floorcovering

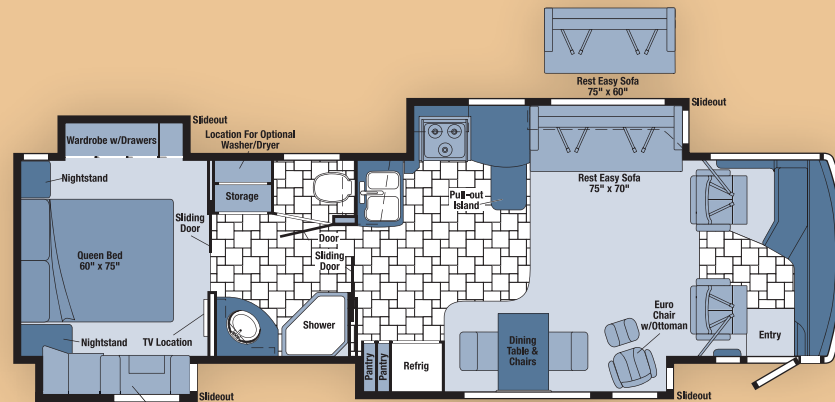
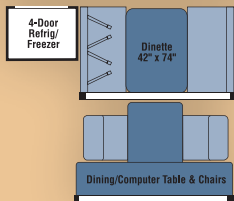


Seat Belts

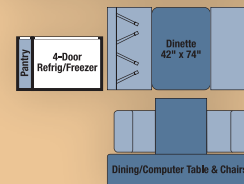
Note: Dimensions shown are for sleeping space only and may vary due to styling differences. Dashed lines denote overhead storage areas.



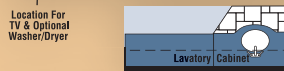
40FD



36RD



40KD





WEIGHTS & MEASURES	36RD	40FD	40KD
Length	36'7"	39'10"	39'11"
Exterior Height¹	12'3"	12'3"	12'2"
Exterior Width²	8'5.5"	8'5.5"	8'5.5"
Exterior Storage³ (cu. ft.)	127	136.4	155.2
Interior Height	7'2"	7'2"	7'2"
Interior Width	8'.5"	8'.5"	8'.5"
Freshwater Capacity w/Heater⁴ (gal.)	108	108	108
Holding Tank Capacity - Black/Gray⁴ (gal.)	54 / 54	62 / 54	54 / 54
LP Capacity⁵ (gal.)	31	31	31
Fuel Capacity (gal.)	100	100	100
GCWR⁶ (lbs.)	42,000	44,320	44,320
GVWR (lbs.)	32,000	34,320	34,320
GAWR - Front (lbs.)	12,000	14,320	14,320
GAWR - Rear (lbs.)	20,000	20,000	20,000
Wheelbase	228"	267"	267"

AUTOMOTIVE/CHASSIS	36RD	40FD	40KD
Chassis - Evolution™ Chassis Freightliner® Caterpillar® 7.2L turbo-charged diesel, 350-hp, rear radiator, Allison® 6-speed electronic 3000 MH transmission, ZF-IFS front air suspension, NeWay® rear air suspension, 160-amp. alternator, 4-wheel ABS, exhaust brake	S		
Chassis - Evolution Chassis Freightliner, Cummins® ISL 8.9L turbo-charged diesel, 400-hp, side radiator, Allison 6-speed electronic 3000 MH transmission, ZF-IFS front air suspension, NeWay rear air suspension, 160-amp. alternator, 4-wheel ABS, engine compression brake		S	S
Air Accessory Manifold quick connect, 50' air hose, pressure gauge, manual air shutoff, Leveling Jacks HWH® hydraulic, manual control, Tire Tools wrench & leverage bar, Trailer Hitch ® 10,000-lbs. drawbar/500 lbs. max. vertical tongue weight & wiring, 7-pin connector, Wheels stylized aluminum	S	S	S
Leveling Jacks hydraulic, automatic controls, HWH	0	0	0

CAB AREA & DRIVER CONVENIENCES	36RD	40FD	40KD
Cab Seats (UltraLeather HP™) armrests, lumbar support, multi-adj., 6-way power-assist, Compass electronic w/outdoor thermometer, Console Center Cabinet , Cruise Control , Defroster Fans aux. built-in, 2-speed w/instrument panel switch, Exhaust Brake Control , Floor Mat (driver) carpet, Freightliner Information Center (see Freightliner's Owner's Manual), Map Lights , Monitor System rearview, color, single camera & one-way audio, Sony® Power Door Locks keyless entry w/remote, Powerpoints (3) 12-volt DC, Shades (front) wraparound, pleated w/pull cords, light-filtering, cab windows, Steering Wheel custom, SmartWheel™ w/power-assist, tilt, Sunvisors (3) powered (40FD-2), Trim Panel driver & passenger sides, Window (driver) full-slider w/screen, dual-glazed, Window (passenger) partial slider w/screen, dual-glazed, Windshield Wipers intermittent, pantograph arms	S	S	S
GPS Navigation System , Trip Computer TripTek™ Video Camera System side-mounted cameras, turn signal activated	0	0	0

ENTERTAINMENT	36RD	40FD	40KD
CB Prep antenna, antenna lead, 12-volt DC power supply, Entertainment Center (exterior) AM/FM radio, CD player w/remote, DC receptacle, AC duplex receptacle, TV jack, radio antenna, speakers (2), lockable compartment, Home Theater Sound System DVD/VCR, receiver, amplifier, speakers (5), subwoofer, Sony, RV Radio ® (cab) AM/FM/Stereo/CD, remotes, roof-mounted flexible rubber antenna, speakers (4), weather band, Sirius® Satellite ready, Radio Power Switch main/aux. battery, Satellite System Ready, Stereo System (bedroom) AM/FM CD player, Audiovox®, recessed cube speakers (2), bass speaker, alarm clock, Telephone input & interior jacks, TV Enhancement Package antenna (amplified), interior jack(s), coax wiring, cable input, exterior jack, reminder light, portable satellite dish hookup, Video Selection System	S	S	S
CB Radio, Compact 10-disc Changer w/remote, Radios (4) 2-way, Satellite Dish Antenna RV digital, manual, elevation sensing unit, Satellite Dish Antenna RV digital, power, Satellite System RV digital, in-motion, King-Dome®, Satellite Radio antenna, docking port, receiver, Sirius, includes six-month paid subscription (NA in Canada)	0	0	0
Entertainment Center w/TV & DVD (exterior) AM/FM radio, DVD w/remote, DC receptacle, AC duplex receptacle, TV 20" AC color stereo w/remote, flat-screen, Sony, speakers (2), bass speaker, storage compartment	0	0	0
TV 20" AC color, bedroom, flat-screen, LCD, stereo w/remote, remote extenders, Sharp®	S	S	S
TV 27" AC color front cabinet, flat-screen, stereo w/remote, Sony	S		S
TV 30" AC color front slideout entertainment center, flat-screen, stereo w/remote, Sony		S	
TV 32" AC color front cabinet, flat-screen, LCD, stereo w/remote, Sony	0		0
Fireplace electric			0

INTERIOR	36RD	40FD	40KD
Ceiling vinyl, Light(s) wall lamp(s), Lights ceiling w/wall switches, incandescent, Lights fluorescent, recessed, galley, dinette, lounge w/2-way wall switches, Lights reading, aux., Picture, Roof Vent shade package, Shades pleated, day/night, blackout, Sliding Stepwell Cover Panel powered, Wainscoating w/chair rail, Windows dual-glazed/thermo-insulated, flush-mounted	S	S	S
Fan ceiling, lounge	0	0	0

CABINETRY	36RD	40FD	40KD
Concert Cherry, Honey Cherry, Portsmouth Oak or Washed Maple stile-and-rail construction	0	0	0

COUNTERTOPS	36RD	40FD	40KD
Solid-Surface w/back splash, galley & bath, Corian®	S	S	S

FLOORCOVERING	36RD	40FD	40KD
Carpeting w/pad, Ceramic Tile galley, bath & cab	S	S	S

FURNITURE	36RD	40FD	40KD
BenchMark™ Full Comfort Dinette (fabric) w/access to storage below	0	0	0
Dining Table & Chairs (2) freestanding, (2) folding, oval freestanding table (40FD & 40KD)	S	S	S
J-Lounge (fabric or UltraLeather HP) access to storage below, throw pillows			0
J-Lounge (UltraLeather HP 70" x 60"), Rest Easy®			0
Lounge Chair (UltraLeather HP) Euro w/ottoman	S	S	
Lounge Chair (UltraLeather HP) & Table Euro recliner w/ottoman			0
Multifunction Table & Chairs (2) freestanding, (2) folding, table lamp, legless table w/solid-surface top	0	0	0
Rest Easy (fabric 75" x 60"), multi-position lounge, fold down armrest w/beverage holder			S
Rest Easy (fabric 75" x 70"), multi-position lounge, dual trundles, throw pillows	S		
Rest Easy (UltraLeather HP 75" x 60"), multi-position lounge, fold down armrest w/beverage holder			0
Rest Easy (UltraLeather HP 75" x 70"), multi-position lounge, dual trundles	0		
Rest Easy (fabric or UltraLeather HP 75" x 60"), multi-position lounge, dual recliners	0	0	0
Sofa (fabric 48" x 70") access to storage below, throw pillows, removable armrests (2)			S
Sofa (UltraLeather HP 48" x 70") access to storage below, throw pillows, removable armrests (2)			0

GALLEY	36RD	40FD	40KD
Faucet single-control w/pullout sprayer, Moen®, Lights fluorescent ceiling & under cabinet, Microwave/Convection Oven w/exterior vent range fan, residential 30," stainless steel, Sharp, Pantry, Range Cover flush-mounted (countertop material), Range Top 3-burner w/storage below, recessed, sealed burners, stainless steel, Amana®, Refrigerator/Freezer large double-door w/icemaker, stainless steel, Norcold®, Roof Vent insulated, powered ventilator fan w/rain sensor, Silverware Tray wood, Sink double-bowl, stainless steel w/sink covers (countertop material), Water Purification System Everpure®	S	S	S
Dishwasher drawer-style	0	0	0
Island Cabinet w/solid-surface countertop	S	S	
Island Storage Bin large, roll-out			S
Microwave/Speedcook Oven w/range fan, residential 30," stainless steel, G.E. Advantium™, Range 3-burner w/large oven, glass door w/storage below, recessed, sealed burners, stainless steel, Amana, Refrigerator/Freezer 4-door w/icemaker, stainless steel, Norcold	0	0	0

BATH	36RD	40FD	40KD
Cabinet lavatory, Cabinet linen, Cabinet medicine, Chair Rail , Faucet(s) (lavatory) dual-control, Moen®, Faucet (shower) single-control w/flexible hand-held showerhead, Light shower, Light fluorescent, recessed, Lights makeup, Roof Vent insulated, power w/rain sensor, private toilet room, Shower w/granite-look wall surround, Shower Door textured glass, Sink oval, Soap Dispenser , Toilet (porcelain) w/foot pedal	S	S	S
Magazine Rack		S	
Shower Seat fold down	S	S	
Mirror private toilet room		S	

BEDROOM	36RD	40FD	40KD
Bed Sleep Number® queen-size mattress by Select Comfort® w/underbed storage (NA 40FD), bedspread, pillows, throw pillows, Cabinet wardrobe, carpeted floor, cedar lined, mirrored door(s), shelves (NA 36RD), light, wire shelf w/clothes rod, Chair Rail , Headboard , Light(s) decorative wall lamp(s), Lights reading, halogen, Light decorative ceiling w/dimmer, Nightstand(s) , Powerpoint 12-volt DC receptacle	S	S	S
Fan ceiling	0	0	0
Bed Sleep Number king-size mattress by Select Comfort			0
Cabinet lavatory, Cabinet medicine, Faucet (lavatory) dual-control, Moen, Lights makeup, Sink oval w/cover			0
Chair (fabric) lounge, w/ottoman, Flexsteel®			S
Chest of Drawers			S
Hamper cedar-lined bottom			S
Mirrors	S		
Vanity Cabinet	S	S	

EXTERIOR	36RD	40FD	40KD
Air Horns roof-mounted, Awning patio, entrance door, electric, Awning Rails w/rain gutters, Door entrance w/separate screen door w/rolldown screen, deadbolt lock, remote & touch pad entry, Entrance Door Step double, electric w/doorjamb switch, Full-Body Paint Options w/double clear coat finish, Regatta Blue, Antelope, Silver Frost, Ladder , Lights fog lamps, Light porch w/interior switch, Light under hood, Light service, driver side, Lights aux. docking lamps, Locking Fuel-Fill Doors , Mirrors electric remote w/defrost, chrome head, full-body paint color arms, turn signal, Mud Guard full-width, Mudflaps rear, Receptacle AC duplex, Sidewall Skin one-piece smooth fiberglass, high-gloss, Storage Compartments smooth valance panels, trunk liner, gas cylinders, TriMark® KeyOne™ System, paddle latch, lights, power locks, fold-up shelf, designated spare tire storage area (tire not included)	S	S	S
Awning windows, Awning sunscreen, patio (requires electric awning package), Compartment Tray slide-out, Spotlight w/wireless remote, Undercoating , Front Exterior Protective Mask	0	0	0
Refrigerator/Freezer portable, requires slide-out tray option	0	0	0
Storage Box slideout, upper shelf & fold-down door, Step Ladder folding	0	0	0

SYSTEMS	36RD	40FD	40KD
Automotive Heater/A/C , Aux. Start Circuit , Batteries (3) (coach) deep-cycle, Battery (coach) disconnect system, manual, Battery Charge Control automatic dual, Central Air Heat Pump , Drain 1½" water tank, Electrical Distribution System AC & DC breaker panels, 50-amp. Furnace 40,000 BTU, two-stage, primary, Generator 7,500-watt, Onan® Quiet Diesel™ Generator/Shoreline Automatic Changeover Switch , Converter/Inverter/Charger DC/AC, 2,000-watt w/remote panel, OnePlace ® systems center, wall-mounted, PowerLine® energy management display, courtesy light, battery digital voltmeter, generator hourmeter gauge, generator start/stop switch, heating & A/C thermostat, holding tank levels, LP tank level, solar panel/battery charger light, water heater switch, water heater on light & pilot indicator light, water pump switch, water tank level, Power Cord 50-amp., Service Center (drainage/water) drainage valves, holding tank flushing system, city water hookup/tank diverter fill, drain for freshwater system, exterior wash station w/pump switch, gravity water fill, monitor panel, soap dispenser, QuickPort® service connection hatch, paper towel holder, portable satellite hookup, 20' sewer hose w/QuickConnect® coupling valve, Service Center (electrical) cable inputs, power cord, QuickPort service connection hatch, shoreline/generator automatic changeover switch, telephone input, Solar Panel 10-watt battery charger, Tank flushing system, black tank only, Tank holding, heated compartment, Tank LP, permanent mount w/gauge, TrueAir ® residential central A/C system, TrueLevel ™ holding tank monitoring system, Water Heater 10-gallon electronic ignition, LP gas/120 VAC w/motoraid, Water System Winterization Package water heater bypass valve & siphon tube, Water Hookup city, Water Pump demand, Washer/Dryer Prep , Water Tank Fill pressurized city hookup w/diverter valve, Water Tank Fill Door locking, gravity	S	S	S
Furnace 25,000 BTU, secondary		S	S
Power Cord Reel powered, 12-volt DC, Vacuum Cleaner central, Dirt Devil®, Washer/Dryer Combination	0	0	0

SLIDEOUTS	36RD	40FD	40KD
Slideout Room rear, (wardrobe) w/slideroom cover	S		
Slideout Room rear, (bed) w/slideroom cover		S	S
Slideout Room rear, (vanity) w/slideroom cover	S	S	
Slideout Room front, (sofa/galley) w/slideroom cover, StoreMore®	S	S	
Slideout Room front, (sofa/dining) w/slideroom cover, StoreMore			S
Slideout Room front, (chair/refrigerator/dining) w/slideroom cover, StoreMore	S		
Slideout Room front, (sofa/galley) w/slideroom cover, StoreMore			S
Slideout Room front, (TV/dining/refrigerator) w/slideroom cover, StoreMore		S	

SAFETY	36RD	40FD	40KD
Assist Bars interior, Assist Handle exterior, lighted, acrylic w/logo, Bumpers front & rear, Child Seat Tether Anchor , Detectors/Alarms LP leak, smoke, carbon monoxide, Fire Extinguisher 10 BC, Ground Fault Interrupter , Light high-mount brakelamps, Lights daytime running, Lights courtesy w/wall switches, Seat Belts cab, 3-point adj., Seat Belts lap (in selected areas), Window escape, Windshield laminated safety glass	S	S	S
Security Vault (bedroom) key lockable	0	0	0

WARRANTY ⁷	36RD	40FD	40KD
12-month/15,000-mile basic limited warranty ; ⁸ 36-month/36,000-mile warranty on structure ; ⁹ 10-year limited parts & labor warranty on roof skin ⁹	S	S	S

- The height of each model is measured to the top of the tallest standard feature and is based on the curb weight of a typically equipped unit. The actual height of your vehicle may vary by several inches depending on chassis or equipment variations. Please contact your dealer for further information.
- Horizon floorplans feature a wide-body design — over 96". In making your purchase decision, you should be aware that some states restrict access on some or all state roads to 96" in body width. Before making your purchase decision, you should confirm the road usage laws in the states of interest to you.
- The load capacity of your motor home is designated by weight, not by volume, so you cannot necessarily use all available space when loading your motor home.
- Capacities are based on measurements prior to tank installation. Slight capacity variations can result due to installation applications.
- Capacities shown are tank manufacturer's listed water capacity (W.C.). Actual filled LP capacity is 80% of listing due to overfilling prevention device on tank.
- Actual towing capacity is dependent on your particular loading and towing circumstances which includes the GVWR, GAWR, and GCWR as well as adequate trailer brakes. Please refer to the Operator's Manual of your vehicle for further towing information.
- See separate chassis warranty details provided in Owner's Manual.
- See your dealer for complete warranty information.
- Standard
- Optional

Not all items available in combination. See dealer for details.

Winnabago Industries® continuing program of product improvement makes specifications, equipment, model availability, and prices subject to change without notice. Comparisons to other motor homes are based on the most recent information available.

INTERIOR DECOR

Choose from three fabric selections and four cabinet wood choices with hidden hinges.

SOFA	LEATHER	BEDSPREAD
		CARPET



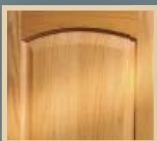
Glass Block w/available Desert Clay UltraLeather HP™



Venetian w/available Desert Clay UltraLeather HP™



Nottingham w/available Truffle UltraLeather HP™



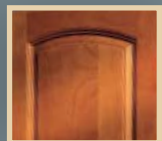
Portsmouth
Oak



Concert
Cherry



Washed
Maple



Honey
Cherry

FULL-BODY PAINT



Antelope



Regatta Blue



Silver Frost

Welcome to Winnebago Industries, Inc.
<http://www.winnebagoind.com/>

WINNEBAGO INDUSTRIES

Company | Products | Lifestyle | Resources | Dealers Only

Home | About Us | Investor Relations | For Media | Career | Contact Us | Visit Us

Welcome to Winnebago Industries.

More People Trust Winnebago Industries Than Any Other Brand

Winnebago
Itasca

Introducing the new 2008 Winnebago® motorhome™

TRUEATR
WINNEBAGO CENTRAL™

Comes 40% Faster, While 10% Quieter!

Copyright © 2008 Winnebago Industries, Inc. | Phone: (641) 565-3535 | This site uses: Flash, Acrobat Reader, QuickTime

WINNEBAGOIND.COM Visit us on the web for more info on all of our motor homes, latest product updates and a host of web-exclusive content.



**Built by Winnebago Industries.
Built to last.**

Itasca motor homes are built by Winnebago Industries, the company that defined motor homes. The company that built its reputation on quality construction. The company that transformed the motor home concept into a way of life.

Today, Winnebago Industries brings that reputation for quality and its 47-year history of motor home innovation to the design and construction of every motor home. It's all a part of SuperStructure,[®] our exclusive system of proprietary structural components that instills each motor home with improved strength and durability.

SOLID FOUNDATION Steel and aluminum truss work provides a solid, flat foundation for floors and sidewalls. Winnebago Industries engineers also take special care to distribute the weight of components to ensure proper handling and stability.



**SUPER
STRUCTURE**



INTERLOCKING JOINTS

The floors, sidewalls and roof are all integrally connected using interlocking joints. This creates a coach body that acts as a cohesive unit for improved strength and durability.

E-COATING Winnebago Industries employs an exclusive 12-stage automotive-style dip tank process to apply an advanced electrodeposition coating on critical steel components for unmatched corrosion protection.

THERMO-PANEL[®] SIDEWALLS Invented by Winnebago Industries, Thermo-Panel construction combines a fiberglass panel, high-density, block-foam insulation and aluminum support structures to create some of the most durable, lightweight sidewalls in the industry.

FIBERGLASS ROOF Every Itasca motor home features a one-piece fiberglass roof backed by a 10-year limited parts-and-labor roof skin warranty.

ATTENTION TO DETAIL Whether it's sending every coach through a high-pressure water tunnel to check for leaks or labeling each individual wire and barcoding parts to save time and frustration during service, Winnebago Industries considers every detail to ensure your Itasca motor home provides you with years of pleasure.

STRONG AS STEEL Appliances are secured directly to embedded steel plates for added safety. Windshields are also mounted in steel with an automotive-style sealant; lesser designs use a rubber gasket to mount the windshield in fiberglass.



1-year-old Itasca fiberglass roof



1-year-old competitor's rubber roof

BUILT TO A HIGHER STANDARD The Horizon features a crowned, one-piece fiberglass roof, backed with a 10-year limited parts-and-labor roof skin warranty. Fiberglass offers superior strength, attractiveness and durability over the rubber roofs found on many competitive models which can chalk, streak and degrade over time. Fiberglass also provides increased puncture and tear resistance.



TAKE A TOUR We're proud of our process, state-of-the-art facilities and the people who make Winnebago Industries number one. We invite you to visit our factory in Forest City, Iowa, for a first-hand look at the dedication and technology behind every motor home we build.



RECOGNIZED QUALITY The Recreation Vehicle Dealer Association annually rates RV manufacturers and awards the Quality Circle award to manufacturers who provide exceptional products, service and support. Winnebago Industries is proud to be the only manufacturer to receive this award every year since its inception.



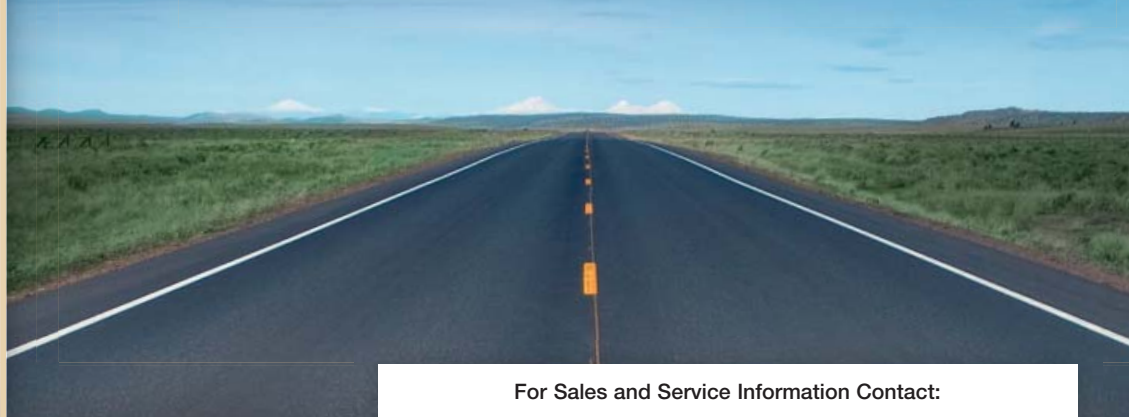
COMMITTED TO SERVICE We back our motor homes with the industry's best service after the sale.

- 12-month/15,000-mile basic limited warranty
- 36-month/36,000-mile warranty on structure
- Standard 10-year limited parts-and-labor roof skin warranty
- Complimentary 24-hour roadside assistance program
- TripSaver Fast Track Parts. TripSaver guarantees that in-stock warranty parts ship directly to your dealer within 24 hours.
- National dealer service network



WIT CLUB Itasca owners are like family. Joining the Winnebago-Itasca Travelers is a great way to meet and travel with other Itasca enthusiasts. Members enjoy:

- Caravans and rallies
- Local and state group activities
- RV travel benefits



For Sales and Service Information Contact:



Built proudly by



NYSE listing: WGO

©2005 Winnebago Industries, Inc.

Printed in USA

Seat belts are your most important hookup. Always buckle up.