

2009 *Vectra*<sup>®</sup>



# 50 years on the road

Since the first Winnebago Industries motor home rolled off the assembly line 50 years ago, the RV lifestyle has grown from a curiosity to a phenomenon. We're proud to have led the way with innovative products, quality construction and a passion for customer satisfaction. Join all of us in the extended Winnebago Industries family as we celebrate 50 years of travel, tailgates and extended weekends.

Full-body Paint



*METALLIC BLUE*



*DARK REDWOOD*

Full-body Paint



*CHESTNUT*



*CADET BLUE*

Full-body Paint



*BLACK GOLD*



*KALAHARI BEIGE*



**50** YEARS ON THE ROAD

# Interior Decor

Choose from three fabric selections and five cabinet wood choices with hidden hinges and weathered nickel hardware.

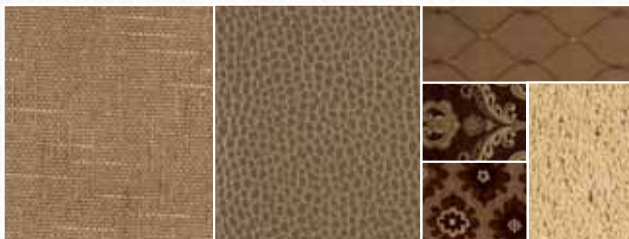
MAIN	ULTRA-LEATHER	BEDSPREAD	
		ACCENT	CARPET
		ACCENT	



**WAKEFIELD W/AVAILABLE PINE CONE ULTRALEATHER™**



**WILLOW BEND W/AVAILABLE BRIARWOOD ULTRALEATHER**



**WOODBIDGE W/AVAILABLE FIELDS ULTRALEATHER**



**CONCERT  
CHERRY**



**HONEY  
CHERRY**



**BELMONT  
MAPLE**



**WASHED  
MAPLE**



**COFFEE GLAZED  
HONEY CHERRY**



## 2009 Vectra®

Make your dreams come true in a Winnebago Vectra®. Loaded with luxury features and amenities such as Corian® countertops, UltraLeather™ furniture, elegantly crafted cabinetry and ceramic tile flooring, your Vectra will help create the memories of a lifetime. Plus, you'll have plenty of space to enjoy everything thanks to SmartSpace™ design elements and a giant full-wall slideout in the 40WD. Beneath it all is the unparalleled Maxum® Chassis for superior ride and handling with an unbelievable amount of storage. You can have it all in a 2009 Winnebago Vectra.

## Relaxing luxury.

Vectra provides everything you desire so you can kick back and relax. The 40WD even has two large LCD HD televisions in the living area so you'll always have a great angle to watch your favorite shows, even if the slideroom is in. Both models are connected to the video selection system and the home theater sound system with CD/DVD player.

For extra channels, the Vectra comes pre-wired for the available King-Dome HD satellite system. The 2,000-watt inverter/charger provides power when a shoreline source is not connected. You'll enjoy it all from the comfort of the Rest Easy® sofa or the available Rest Easy theater seating.

The fun continues outside with an exterior entertainment center that includes an AM/FM radio, CD player and a TV jack. Upgrade with an LCD TV and a DVD player to never miss any of the action.



The **WEB** icon designates a Winnebago Industries Key Feature. For further in-depth information and photos, use the drop-down menu or click on the 'Key Features' page at [gowinnebago.com](http://gowinnebago.com).



**THEATER SEATING** Twin recliners with a center console make the available Rest Easy theater seating a popular choice. They quickly convert into twin beds at the touch of a button to accommodate overnight guests.

#### **DRAWER SLIDES**

Drawers open wide on full-extension slides to create easy access to stored goods. Cabinet doors feature hidden hinges for a clean look and carefree operation.



#### **REFRIGERATOR/FREEZER**

The four-door refrigerator/freezer includes an icemaker and is sized to provide abundant cold storage.



## Fine cuisine.

The galley boasts high-end amenities such as Corian® countertops, ceramic tile floors, full-extension drawer slides and beautiful cabinetry with weathered nickel hardware and hidden hinges. Corian sink and range covers complement the countertops, giving you more room to prepare meals. A recessed, two-burner Amana® range top and microwave/convection oven come standard or you can select a microwave/speedcook oven for faster meal preparation. A separate faucet for filtered water is also provided.

The large four-door refrigerator/freezer with icemaker comes standard, or choose the extra-large, two-door, 14 cu. ft., stainless steel refrigerator with an ice and water dispenser. A generous pantry comes standard for your dry goods and a dishwasher can be added for easy clean-up.



**U-SHAPED DINETTE** This UltraLeather U-shaped dinette provides elegant dining accommodations on the 40WD. Its sliding table top moves in and out for easy entry. The 40TD gives you the choice of a dining table, buffet with pullout table, or the available BenchMark® full-comfort dinette.





## Master suite.

A large bedroom slideout creates a spacious room for sleeping and relaxing. The Ideal Rest™ body-conforming memory foam mattress provides perfect support for a great night's sleep or choose the available Sleep Number® bed. Both come in a standard king size in the 40WD. The bedroom offers an abundance of storage and a 26" LCD TV. It is wired to the bedroom stereo system that features AM/FM radio, CD/DVD player, alarm clock, iPod/MP3 input and a headphone jack.



WEB

Ideal Rest

sleep number  
by SELECT COMFORT

**SLEEP NUMBER** The available Sleep Number bed by Select Comfort™ lets you adjust each side of the bed independently to your ideal firmness.

**BATH** The spacious bathroom features a Corian countertop, large curved shower, flexible showerhead and Moen® Posi-Temp® technology for consistent temperature even if the water pressure fluctuates.



**WASHER/DRYER** Wash your clothes in your Vectra when you choose the available washer/dryer, located in the bedroom.



## Driving pleasure.

You haven't experienced true luxury performance and handling until you've driven the Vectra. The Maxum Chassis delivers one of the smoothest rides ever with an innovative chassis design and suspension system. The Vectra is also designed to accommodate you with adjustable accelerator and brake pedals and a tilting/telescoping SmartWheel™ steering wheel. A rearview monitor makes backing a snap while side-view cameras are available to help you see through turns. Built-in defroster fans, powered sunvisors and an available sunscreen package provide added driving convenience.

GPgo™ is a Winnebago Industries® exclusive that offers the convenience of a powerful integrated Global Positioning System with the flexibility of a portable GPS. At the heart of the system is an Alpine® GPS unit. A large 7" touch screen and a remote control let you view and control GPS functions from the driver or passenger seats. You can also view the GPS output on the rearview monitor. Best of all, on day trips, simply take your Alpine GPS unit along in your tow vehicle.

The RV Radio® gives you the option of listening to AM/FM stereo, CDs, a weather band or your personal iPod/MP3 player through the cab speakers. Upgrade with the Sirius® Satellite Radio package for 130 channels of crystal clear programming and a complimentary six-month subscription.



**CAB SEAT** UltraLeather™, adjustable lumbar support and a six-way power pedestal provide maximum comfort. The passenger will also enjoy a footrest and an electric, sliding step well cover.



**WEB TRUELEVEL**  
 The TrueLevel holding-tank monitoring system uses sonar technology to read liquid levels from outside the tank. There are no probes to corrode or clog, just accurate readings time after time.



**EXTRA BATTERY**

Four large-capacity Group 31 batteries provide an extended battery reserve and 33% more amp.-hours for 2009.

**More storage.**

The Maxum Chassis creates more room for storage than ever thought possible. Factor in innovative Smart Storage™ solutions such as moveable panels and remote compartment locks and you'll be able to carry everything with you wherever you go. You'll look good getting there, too, with stylish full-body paint and double clear coat for added gloss and durability.

Connecting at the campsite is easy with a service center that features the QuickPort® service connection hatch and color-coded hookup points. You'll also find a wash station and a winterization package for easy storage preparation.

Window and patio awnings provide plenty of shade. An air accessory manifold provides a source of compressed air for filling tires and toys.



**WEB ONEPLACE** The OnePlace systems center lets you monitor and control key systems from one convenient location.



**WEB position controls FOR HYDRAULIC JACKS** Control the hydraulic jacks from the driver's seat, entrance door, or service center so you can watch the jacks lower into position.



**WEB TRUEAIR** TrueAir residential central air conditioning delivers 10% higher output for 2009 for even cooling throughout the coach without A/C condensation roof runoff.



**WEB POWERLINE** The PowerLine energy management system monitors electrical usage and automatically cycles appliances on and off to help prevent tripped campground circuit breakers.

# MAXUM CHASSIS

WEB



THE LEADER AT EVERY TURN™

## ENJOY THE RIDE

Winnebago Industries® worked closely with Freightliner® to combine our exclusive SuperStructure® with the XCL Chassis to create a stronger, stiffer chassis for a whole new level of travel comfort. The Maxum Chassis eliminates much of the road vibration with a combination of innovative structural design and shock-absorbing components like rear air suspension. Take a ride in the Winnebago Vectra and feel how the Maxum Chassis with its lower center of gravity, rigid framework and 60° wheel cut delivers the smoothest ride and handling ever.

## Leave Nothing Behind

The Maxum Chassis offers 205 cubic feet of exterior coach storage so you can load up with everything you need for weeks on the road. The secret is its revolutionary lowered-rail design. This advanced chassis engineering repositions the chassis frame rails, increasing the cross-coach storage height for the most efficient use of space. Combined with Winnebago Industries' Smart Storage™ philosophy, you get taller compartment openings, larger pass-through compartments, and a storage capacity that no other chassis in its class can match.

## The Maxum Advantage

- 34,320-lb. GVWR
- 425-hp ISL Cummins® clean air diesel engine
- Touchpad shifter
- Allison® 6-speed transmission
- 10,000-lb. hitch<sup>6</sup>
- 4-wheel ABS anti-lock brakes
- NeWay® rear air suspension
- Engine compression brake
- 60° wheel cut
- Michelin® tires

**3-Year/50,000-Mile Limited Warranty** (including towing and roadside assistance)—more than 400 North American service locations, 60 Freightliner® RV Oasis locations and a 24/7 help line add up to a commitment you can count on.



WEB QuickPort

**WASH STATION** Rinse off muddy shoes or sandy gear at the wash station found in the service center that houses all of your connection points.



**ENTERTAINMENT CENTER** Upgrade the exterior entertainment center to include an LCD TV and a DVD player.

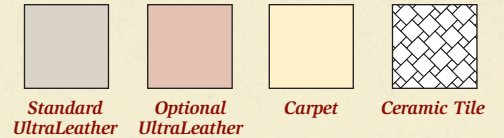


WEB SMART STORAGE

**STORAGE TRAY** An available sliding storage tray with drawers makes accessing stored gear even easier.

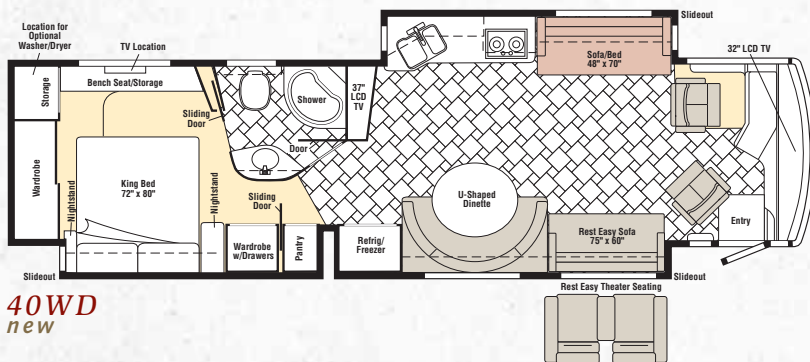
# 2009 *Vectra*® Floorplans & Specifications

Dimensions shown are for sleeping space only and may vary due to styling differences. Dashed lines denote overhead storage areas. Floorplans and specifications are also available online at: [gowinnebago.com](http://gowinnebago.com)



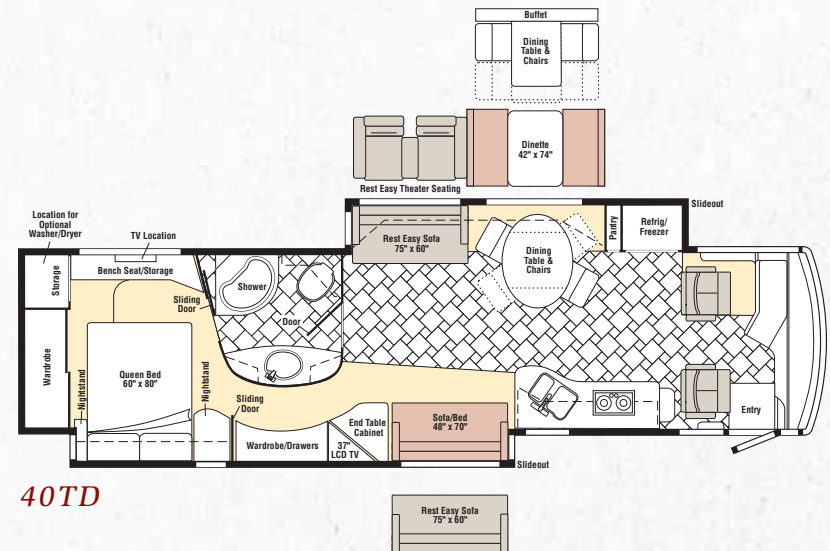
## 40WD Weights & Measures

Length	39'10"
Exterior Height <sup>1</sup>	12'4"
Exterior Width <sup>2</sup>	8'5"
Exterior Storage <sup>3</sup> (cu. ft.)	205
Awning Length	15'
Interior Height	7'2"
Interior Width	8'
Freshwater Capacity w/Heater <sup>4</sup> (gal.)	100
Holding Tank Capacity - Black/Gray <sup>4</sup> (gal.)	70/54
LP Capacity <sup>5</sup> (gal.)	30
Fuel Capacity (gal.)	100
GCWR <sup>6</sup> (lbs.)	44,320
GVWR (lbs.)	34,320
GAWR - Front (lbs.)	14,320
GAWR - Rear (lbs.)	20,000
Wheelbase	267"



## 40TD Weights & Measures

Length	39'10"
Exterior Height <sup>1</sup>	12'4"
Exterior Width <sup>2</sup>	8'5"
Exterior Storage <sup>3</sup> (cu. ft.)	205
Awning Length	20'
Interior Height	7'2"
Interior Width	8'
Freshwater Capacity w/Heater <sup>4</sup> (gal.)	100
Holding Tank Capacity - Black/Gray <sup>4</sup> (gal.)	54/128
LP Capacity <sup>5</sup> (gal.)	30
Fuel Capacity (gal.)	100
GCWR <sup>6</sup> (lbs.)	44,320
GVWR (lbs.)	34,320
GAWR - Front (lbs.)	14,320
GAWR - Rear (lbs.)	20,000
Wheelbase	267"



## Maxum® Freightliner® Chassis

425-hp Cummins® ISL 8.9L turbo-charged diesel engine  
Allison® 6-speed electronic 3000 MH transmission  
ZF™-IFS front air suspension  
NeWay® rear air suspension  
160-amp. alternator  
4-wheel ABS  
HWH® hydraulic leveling jacks w/3-position controls  
Trailer Hitch<sup>1</sup>: 10,000-lb. drawbar/500 lbs. maximum vertical tongue weight and wiring  
7-pin tow connector  
Stylized aluminum wheels  
Engine compression brake  
Chassis battery disconnect

## Cab Conveniences

RV Radio<sup>2</sup>: AM/FM stereo, CD player, weather band, remotes, iPod/MP3 input  
Cab seats w/armrests, adjustable lumbar support, slide, swivel and recline  
6-way power driver seat pedestal  
Passenger seat footrest  
SmartWheel™ tilt/telescope steering wheel  
Cruise control  
Defroster fans  
Rearview monitor system w/1-way audio  
Powered step well cover  
Driver window shade  
Electric mirrors w/defrost  
Power locks/keyless entry  
Electronic compass/thermometer  
Map lights  
Chassis/house battery radio power switch  
Powered sunvisors

40WD  
40TD

### Optional Equipment

- o o Sirius® satellite radio w/6-month complimentary subscription and iPod interface cable connector
- o o 6-way power passenger seat pedestal
- o o Side-view video camera system
- o o GPS navigation system
- o o Cobra® C.B. Radio

## Interior

Home Theater Sound System: CD/DVD player, receiver, amplifier, speakers (5) and subwoofer  
32" LCD HDTV (40WD)  
37" LCD HDTV  
Satellite system ready  
Video selection system  
TV Enhancement Package: amplified antenna, wiring, interior and exterior jacks, portable satellite dish hookup  
Dual-glazed/thermo-insulated windows

OnePlace® systems center  
Day/night pleated shades  
Front wraparound curtain  
RestEasy® dual-control multi-position lounge w/UltraLeather™

40WD  
40TD

### Optional Equipment

- o o 10-disc CD changer
- o o King-Dome® HD automatic satellite dish (front and rear)
- o o King-Dome HD in-motion satellite dish w/dual LNB (front and rear)
- o o Ceiling fan
- o o Dirt Devil® central vacuum cleaner
- o o Sunscreen package w/windshield wiper covers
- o o Washer/dryer combo
- o o Stackable washer/dryer
- o RestEasy dual-control multi-position lounge w/UltraLeather

## Galley

Corian® solid-surface countertops  
Stainless steel microwave/convection oven w/exterior vented range fan  
Recessed range top w/sealed burners  
Corian sink and range covers  
Four-door refrigerator/freezer w/icemaker  
Water filtration system w/dedicated faucet  
Mini blinds

40WD  
40TD

### Optional Equipment

- o o Microwave/speedcook oven w/exterior vented range fan
- o o Stainless steel, drawer-style dishwasher
- o o 14 cu. ft., two-door stainless steel refrigerator/freezer w/icemaker and water dispenser, auto defrost

## Bath

Corian® solid-surface countertops  
Shower surround w/built-in seat  
Moen® Posi-Temp® control  
Flexible showerhead  
Powered roof vent  
Mini blinds (40WD)

## Bedroom

Ideal Rest™ memory-foam mattress  
Bedsprad and pillows  
26" LCD TV  
Stereo System: AM/FM radio, CD/DVD player, alarm clock, iPod/MP3 input, headphone jack  
Ceiling fan  
Cedar-lined hamper

40WD  
40TD

### Optional Equipment

- o Sleep Number® bed by Select Comfort™

## Exterior

Electric patio awning w/wind sensor and remote  
Electric 4 ft. entrance door awning  
Window awnings  
Exterior Entertainment Center: AM/FM radio, CD player, remote and TV jack  
Automatic door steps  
Tri-Mark® KeyOne™ system  
Air accessory manifold w/50-ft. hose  
Folding step ladder  
Porch light  
Full-width mud guard  
Storage containers  
Auxiliary docking lamps  
Lower front protective mask

40WD  
40TD

### Optional Equipment

- o Electric 12 ft. awning w/wind sensor and remote (replaces 4 ft. entrance awning)
- o 2nd electric patio awning w/wind sensor
- o o Sliding compartment tray w/drawers
- o o Exterior Entertainment Center: AM/FM radio, remote, iPod connector, DVD player, 19" LCD TV (40WD), 26" LCD TV (40TD)
- o o Portable 12V refrigerator/freezer
- o o Spotlight

## Heating and Cooling System

TrueAir® residential central air conditioning system  
Heat pump  
35,000 BTU furnace (40WD)  
40,000 BTU furnace (40TD)  
25,000 BTU secondary furnace

## Electrical System w/QuickPort®

Service Center: cable input, 50-amp. power cord, QuickPort service connection hatch, shoreline/generator automatic changeover switch, TV/satellite input, powered cord reel  
8,000-watt Cummins Onan® Quiet Diesel™ generator  
2,000-watt converter/inverter/charger  
Electrical distribution center  
PowerLine® energy management system  
Auxiliary start circuit  
4 deep-cycle Group 31 house batteries  
Dual battery charge control  
Battery charger/maintainer  
Battery disconnect system (coach)  
10-watt solar panel battery charger

40WD  
40TD

### Optional Equipment

- o Generator automatic start system

## Plumbing System w/QuickPort and QuickConnect®

Service Center: drain valves, holding-tank flushing system, pressurized city water hookup w/diverter valve, exterior wash station, monitor panel, soap dispenser, QuickPort hatch, 20' sewer hose, QuickConnect coupling valve  
TrueLevel™ holding-tank monitoring system  
Water filtration package  
Winterization Package: water heater bypass valve and siphon tube  
Washer/dryer prep  
10-gallon water heater w/motoraid (16-gallon output)

40WD  
40TD

### Optional Equipment

- o Water supply hose w/reel

## Safety

Seat belts  
Child seat tether anchor w/dinette (40TD)  
LP, smoke and carbon monoxide detectors  
10 BC fire extinguisher  
Ground fault interrupter  
High-mount brake lights

## Warranty<sup>7</sup>

12-month/15,000-mile basic warranty,<sup>8</sup>  
36-month/36,000-mile limited warranty on structure,<sup>9</sup>  
10-year limited parts & labor warranty on roof skin<sup>9</sup>

- 1 The height of each model is measured to the top of the tallest standard feature and is based on the curb weight of a typically equipped unit. The actual height of your vehicle may vary by several inches depending on chassis or equipment variations. Please contact your dealer for further information.
  - 2 Vectra floorplans feature a wide-body design – over 96" in making your purchase decision, you should be aware that some states restrict access on some or all state roads to 96" in body width. Before making your purchase decision, you should confirm the road usage laws in the states of interest to you.
  - 3 The load capacity of your motor home is designated by weight, not by volume, so you cannot necessarily use all available space when loading your motor home.
  - 4 Capacities are based on measurements prior to tank installation. Slight capacity variations can result due to installation applications.
  - 5 Capacities shown are tank manufacturer's listed water capacity (W.C.). Actual filled LP capacity is 80% of listing due to overfilling prevention device on tank.
  - 6 Actual towing capacity is dependent on your particular loading and towing circumstances which includes the GVWR, GAWR, and GCWR as well as adequate trailer brakes. Please refer to the Operator's Manual of your vehicle for further towing information.
  - 7 See separate chassis warranty details provided in Owner's Manual.
  - 8 See your dealer for complete warranty information.
- o Optional  
NA Not Available

Not all items available in combination. See dealer for details.

Winnebago Industries® continuing program of product improvement makes specifications, equipment, model availability, and prices subject to change without notice. Comparisons to other motor homes are based on the most recent information available at printing.



# Built by Winnebago Industries. Built to last.

Winnebago motor homes are built by Winnebago Industries, the company that defined motor homes. The company that built its reputation on quality construction. The company that transformed the motor home concept into a way of life.



Today, Winnebago Industries brings that reputation for quality and its 50-year history of RV innovation to the design and construction of

**WEB** every motor home. It's all a part of SuperStructure®, our exclusive system of proprietary structural components that instills each motor home with improved strength and durability.

**Solid Foundation** Steel and aluminum truss work provides a solid, flat foundation for the floor and sidewalls. Winnebago Industries engineers also take special care to distribute the weight of components to ensure proper handling and stability.

**Strong as Steel** Appliances are secured directly to embedded steel plates for added safety. Windshields are also mounted in steel with an automotive-style sealant; lesser designs use a rubber gasket to mount the windshield in fiberglass.



### Interlocking Joints

The floor, sidewalls and roof are all integrally connected using interlocking joints. This creates a Vectra body that acts

as a cohesive unit for improved strength and durability.

**E-Coating** Winnebago Industries employs an automotive-style dip tank process to apply an advanced electrodeposition coating on critical steel components for corrosion protection.

**Thermo-Panel® Sidewalls** Invented by Winnebago Industries, Thermo-Panel construction combines a fiberglass panel, high-density, block-foam insulation and aluminum support structures to create some of the most durable, lightweight sidewalls in the industry.

**Attention to Detail** Whether it's sending every Vectra through a high-pressure water tunnel to check for leaks or labeling individual wires and barcoding parts to save time and frustration during service, Winnebago Industries considers every detail to ensure your Winnebago motor home provides you with years of pleasure.



1-year-old Winnebago fiberglass roof



1-year-old competitor's rubber roof

**Fiberglass Roof** The Vectra features a crowned, one-piece fiberglass roof, backed with a 10-year limited parts-and-labor roof skin warranty. Fiberglass offers superior strength, attractiveness and durability over the rubber roofs found on many competitive models which can chalk, streak and degrade over time. Fiberglass also provides increased puncture and tear resistance.



[gowinnebago.com](http://gowinnebago.com) Visit us on the web for more info on all of our motor homes, the latest product updates and a host of web-exclusive content.



**Take a Tour** We're proud of our process, state-of-the-art facilities and the people who make Winnebago Industries number one. We invite you to visit our complex in Forest City, Iowa, for a first-hand look at the dedication and technology behind every motor home we build.



**Recognized Quality** The Recreation Vehicle Dealer Association annually rates RV manufacturers and awards the Quality Circle award to manufacturers who provide exceptional products, service and support. Winnebago Industries is proud to be the only manufacturer to receive this award every year since its inception.



**Committed to Service** We back our motor homes with the industry's best service after the sale.

- 12-month/15,000-mile basic limited warranty
- 36-month/36,000-mile warranty on structure
- Standard 10-year limited parts-and-labor roof skin warranty
- Complimentary 24-hour roadside assistance program

- RV Technical Assistance Hotline
- Emergency Trip Interruption
- Nationwide Trip Routing
- RV Service Appointment Assistance
- Emergency Message Service
- Fee-Free Travelers Cheques



- TripSaver Fast Track Parts. TripSaver guarantees that in-stock warranty parts ship directly to your dealer within 24 hours.
- National dealer service network



**WIT Club** Winnebago owners are like family. Joining the Winnebago-Itasca Travelers is a great way to meet and travel with other Winnebago enthusiasts. Members enjoy:

- Caravans and rallies
- Local and state group activities
- RV travel benefits

For Sales and Service Information Contact:

Built proudly by



NYSE listing: WGO

Printed in USA

Seat belts are your most important hookup. Always buckle up.

© 2008 Winnebago Industries, Inc.