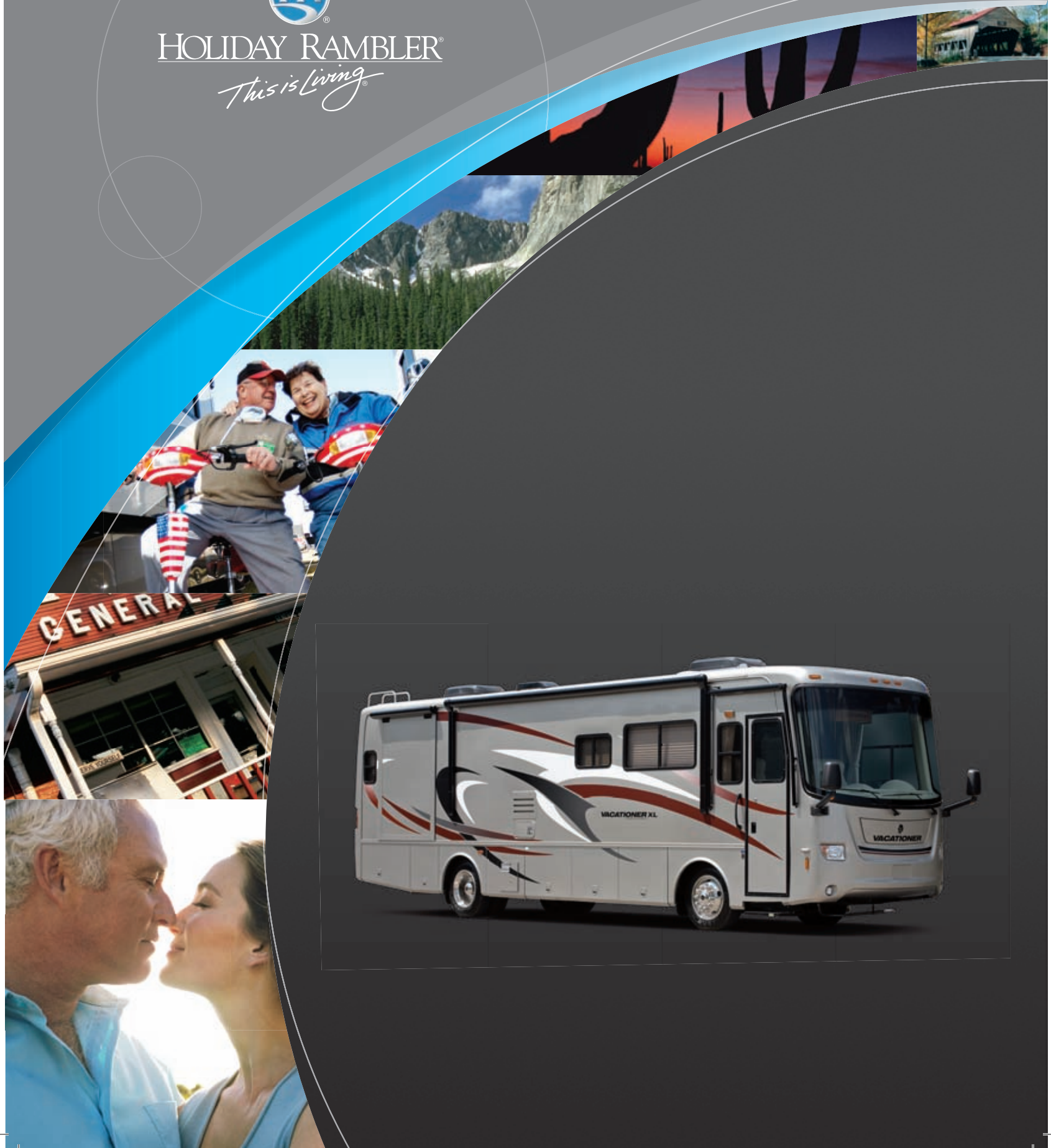


VACATIONER<sup>®</sup> XL  
2008

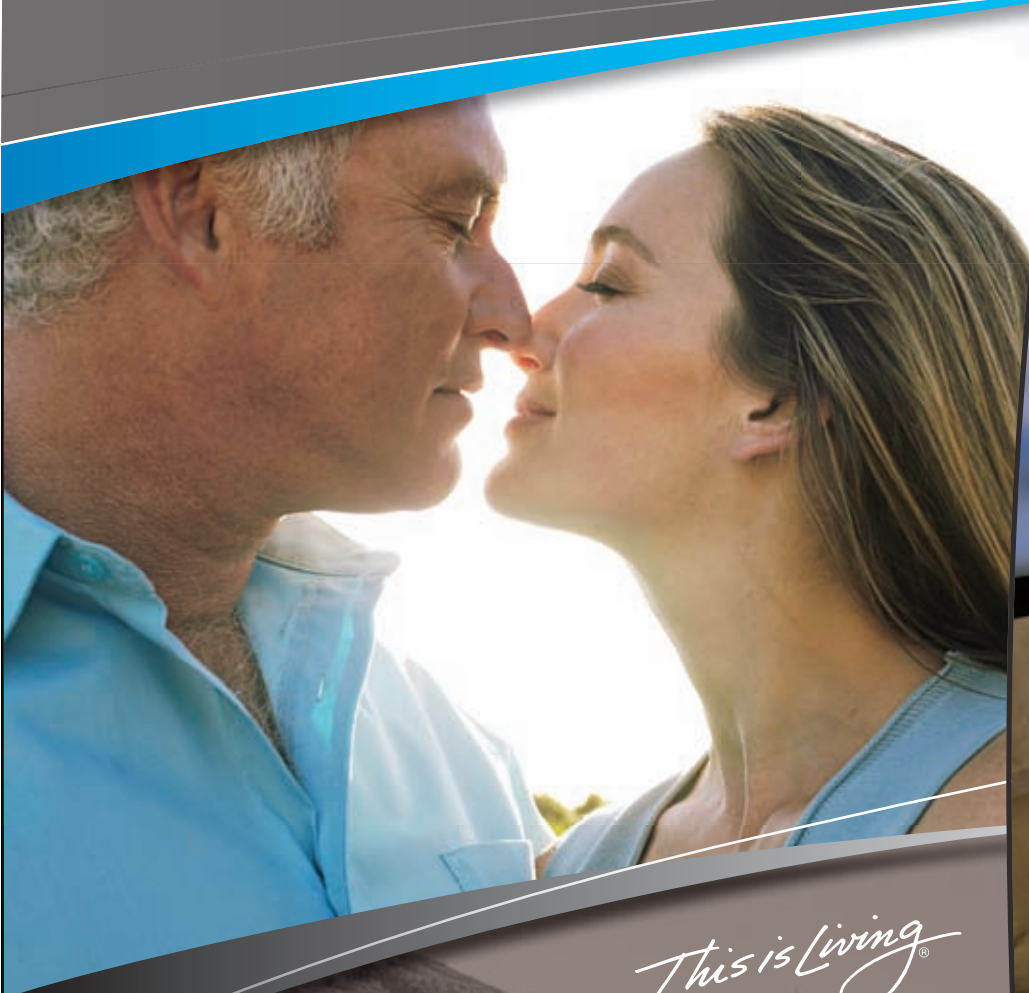


HOLIDAY RAMBLER<sup>®</sup>

*This is Living<sup>®</sup>*



HR VACATIONER® XL



*This is Living®*





36WBD | ESCAPE | NEWPORT CHERRY

## IT'S TIME TO STEP UP.

There's plenty to love about the 2008 Vacationer XL. It's spacious, stylish and filled with amenities to make the most of life on the road. Like the booth dinette with arched backs or the easy bed sofa with optional air mattress. The optional Euro-recliner is the perfect place to catch a movie on the standard LCD stereo TV in the cockpit overhead. You'll also enjoy countless details such as wainscoting and chair rails, satin black cabinetry hardware, and a china toilet, to name a few. The exterior is something special, too, with deluxe full-

body paint with redesigned vinyl graphics. But there may be one thing you'll love more than anything else — the engine. Because the Vacationer XL gives you a choice between gas or diesel engines. For those who prefer gas, the 38PLT and 38SDD models have a GM Vortec 8,100 V8. The other Vacationer floorplans all feature a powerful Cummins® 325 HP rear-mounted, diesel engine. The Vacationer XL. It's a big step up without a big jump in price.



*This is Living*

▶◀ PANAVIEW™

1-PIECE WINDSHIELD



36WBD | ESCAPE | NEWPORT CHERRY

MADE TO KEEP YOU SMILING.

Vacationer’s engine isn’t the only thing that will keep you happy — starting with the beautiful kitchen cabinets with raised panel doors and top arches on upper cabinets. Then there are the appliances — a double-door refrigerator, high-output cooktop and a convection microwave. There are new recessed ceiling lights over the solid surface countertops to keep everything well lit and cheery. Cleanup is easy thanks to a stainless steel sink with single lever faucet with pullout sprayer. The bathroom and bedroom

will keep you smiling, as well. Both are roomy and have plenty of storage space. The bath features a new satin nickel finish faucet and the bedroom boasts a spacious queen-size bed. In the cockpit, you’ll love the fiberglass dash with a CD player/radio, weather band and six speakers as miles fly by in the comfortable, recliner pilot and co-pilot seats. And with Vacationer XL, you can bring along all your favorite things. There’s more than enough room in the pass-through bays and polyethylene storage compartments.

## AN UPSCALE LOOK TO MATCH.

Vacationer XL's looks are designed to match its high-performance engine. Stunning exterior graphics in your choice of three color schemes coordinate perfectly with sophisticated decor options. Once you decide which is the right look for you, pair it with either of our wood finishes — a light, sophisticated Champagne Select or deep, rich Newport Cherry. The final look is bound to make you smile.



**ASSISTANCE**

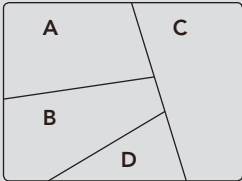
SALES • TECH • ROADSIDE



## WE'RE HERE. ANYTIME, EVERY TIME.

- Reach us anytime — literally — via our live customer support line.
- Drive in to one of our 350 Service Centers.
- Enjoy the first year free when you enroll in our Owner Advantage Roadside Assistance Program.
- See where it all begins with a tour of one of our facilities in Indiana or Oregon. Call 1-800-650-7337 or 1-800-634-0855 to find out more.

- A. BEDSPREAD
- B. SOFA
- C. ACCENT
- D. CARPET



ESSEX

**BETTER  
STAIN  
PROTECTION**



Manufactured in, not added on. For added protection against stains, soil repellent is applied to virtually all upholstery fabric during the finishing process for superior coverage.\*

\* Brand and application of upholstery fabric protection may vary depending on date recreational vehicle was manufactured.



ESCAPE



NEWPORT CHERRY



CHAMPAGNE SELECT



ALPINE



The Vacationer XL features Holiday Rambler's exclusive Alumaframe® Superstructure. Our revolutionary system of aluminum C-Channel crossmembers runs the entire length of the unit, with double-welded intersections for added strength. This rigid design is both lighter and sturdier than tubular aluminum frames — and much more reliable than butt-welded or screwed joint designs. From dirt roads to potholes, you can

count on Alumaframe® to handle the relentless stresses of the road and provide superior structural integrity for many years to come.

**1** A steel cage cockpit gives the Roadmaster chassis incomparable strength and safety in the front of the coach.



Alumaframe®



Aluminum  
(Butt-Welded)



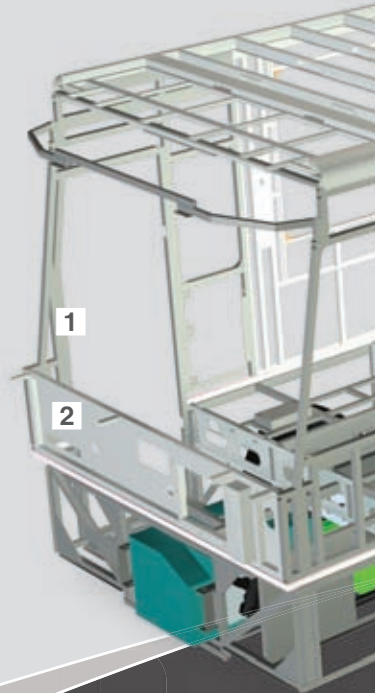
Alumaframe®  
(C-Channel)

## ROADMASTER RSR RAIL CHASSIS

With the Vacationer® XL, you enjoy the added assurance of knowing you're riding on a Roadmaster RSR Rail chassis. All Roadmaster chassis are custom designed and built to the exact specifications of each floorplan for best-in-class performance, safety and comfort. The smooth-handling RSR chassis is teamed here with a Cummins® 325 HP rear diesel engine for a powerful diesel pusher package that'll take you anywhere you want to go in style.

The 38PLT and 38SDD floorplans feature the innovative rear-powered Workhorse UFO™ raised rail chassis with a GM Vortec gas engine. Together they give you pusher performance combined with the easy maintenance of a gas engine.

Our exclusive SmartStructure II truss system is engineered as part of the chassis and provides superior strength, rigidity and balance. To prevent corrosion, the structure is pre-primed and coated with rust-inhibiting paint.



### 9-LAYER ROOF (top to bottom)

- One-piece peaked fiberglass roof
- Luaun backing
- Thick, tapered bead foam insulation
- Aluminum double I-beam superstructure filled with fiberglass insulation
- Vapor barrier
- Structure foam: thermal insulative barrier
- 1/2" bead foam insulation
- Foam padding for extra insulation
- Padded vinyl ceiling

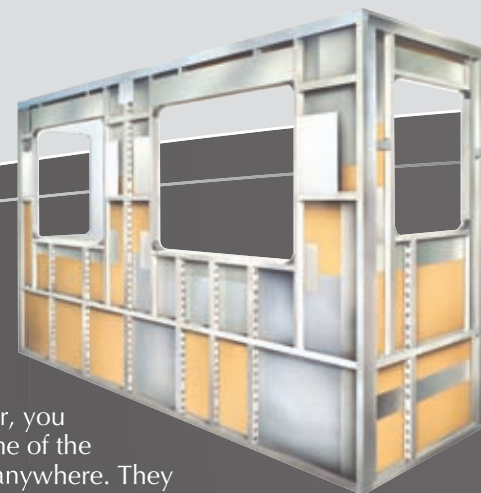


**2** Every Roadmaster chassis features a steel firewall for added protection in the cockpit.

**3** The heavy-duty steel undercarriage provides unsurpassed safety, strength and durability.

**4** The intercooler is stacked on top of the radiator, with an aluminum core instead of steel components sandwiched together, for the best cooling package in the industry.

**5** The rugged Cummins® ISB-AD 325 HP engine is mounted in the rear of the coach for a quieter ride. With 610 lbs./ft. torque, it gives you maximum power when you need it most. The Allison® 1,000 MH 6-Speed World Transmission comes with a push button shift pad for added convenience.

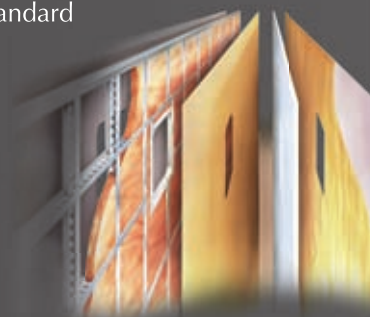


### SLIDE-OUT CONSTRUCTION

When you purchase a Holiday Rambler, you can be sure the slide-out boxes are some of the strongest and most reliable you'll find anywhere. They feature our exclusive multi-layer construction to give you maximum insulation and to reduce the chance of warping, twisting or shifting.

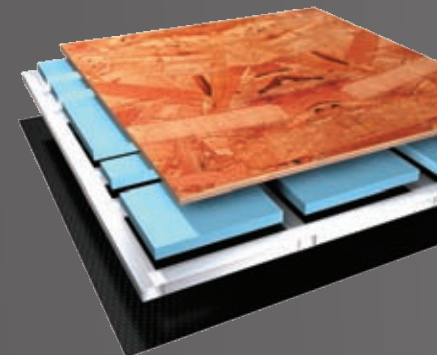
### 5-LAYER EXTERIOR WALL (left to right)

- Smooth gel coat fiberglass is standard
- Interlocking C-Channel filled with 1-1/2" fiberglass insulation bonded in place so it doesn't sag or leave spaces uninsulated
- Vapor barrier
- Bead foam adds comfort, saves energy and provides a thermal insulative barrier
- Interior paneling



### 4-LAYER FLOOR (top to bottom)

- Structurwood™
- Blue foam insulation
- 1-1/2" aluminum tube
- Three-ply poly underbelly





## BODY CONSTRUCTION: FEATURES

- Alumaframe® Superstructure
- Steel Cage Cockpit Construction
- Smooth Gel Coat Fiberglass Exterior Walls
- Front and Rear Molded Fiberglass Caps
- One-Piece Generator Access Door
- Rear Engine Doors
- Fiberglass Engine Cover
- Panaview™ 1-Piece Front Windshield
- 84" Interior Height
- Front-Mounted Mirrors with Power Control Heads and Heat
- Pass-Through Storage Bays under Slide-Outs
- One-Piece Polyethylene Storage Compartment
- Deluxe Full-Body Paint with Vinyl Graphics
- Rear Ladder
- Carpeted Electric Flush-Floor Stepwell Cover
- Interior Rubber Entry Step
- Exterior Single Entry Step (N/A: 38PLT)
- Exterior Double Entry Step (38PLT)
- Undercoating

## OPTIONS

- Film Front Protective Mask
- Chrome Front-Mounted Mirrors with Power Control Heads and Heat
- Standard Run Savings Package: 3-Camera Rear Vision System with Audio and Adjustable Center Camera, Home Theater Surround Sound System with Sub-Woofer, Automatic Patio Awning

## CHASSIS/ENGINE/SUSPENSION: ROADMASTER FEATURES (N/A: 38PLT, 38SDD)

- Roadmaster RSR Rail Chassis
- Cummins® ISB-AD 325 HP Engine with Allison® 1000 MH 6-Speed World Transmission
- Push-Button Shift Pad on 1000 MH Transmission
- Engine Displacement: 5.9L/359 Cu. In.
- Torque: 610 lbs./ft. Max. Net at 1,600 RPM
- 75-Gallon Fuel Tank
- 156 Amp Alternator
- Radial Tires: 255/70R/22.5
- Stainless Steel Wheel Simulators
- Leaf Spring Suspension
- Four Gas Shock Absorbers
- Performance Suspension Package
- Hydraulic Anti-Lock Braking System
- Exhaust Brake VG Turbo with Engine
- Prewire for Supplemental Braking System
- Air Cleaner Restriction Indicator
- Fully Automatic Hydraulic Leveling System
- 4,000 Lb. Hitch Receiver with Dual Connector (4-Pin or 7-Pin)

## CHASSIS/ENGINE/SUSPENSION: WORKHORSE UFO FEATURES (38PLT, 38SDD)

- Workhorse Raised Rail Chassis
- GM Vortec 8,100 V8 (8.1 L) Gas Engine with Allison® 2000 Series 6-Speed Automatic with Fifth and Sixth Gear Overdrives
- Engine Displacement: 8.1 Liters 496 Cu. In.
- Power: 340 HP Torque: 455 lbs./ft.
- 100-Gallon Fuel Tank
- Upgrade 18" Leather Wrap Steering Wheel
- 145 Amp Alternator
- Radial Tires: 255/80R/22.5
- Polished Aluminum Wheels
- Front Suspension: Monoleaf Springs, Swaybar and Bilstein® Shocks
- Rear Suspension: Coil Springs and Bilstein® Shocks Plus Torque Box (Torque Box is a Stabilizer Bar That Minimizes Body Roll)
- 55 Degree Wheel Cut
- Quadrauc Braking System with Four-Wheel Disc Brakes (Four-Wheel Anti-Lock Function)
- Adjustable Brake Pedal
- Prewire for Supplemental Braking System
- Fully Automatic Hydraulic Leveling System
- 5,000 Lb. Hitch Receiver with Dual Connector (4-Pin or 7-Pin)

## COCKPIT: FEATURES

- Fiberglass Automotive Dash with Oxford Burl Instrumentation Panel
- CD Player/Radio with Sirius-Ready Compatibility, Weather Band and Six Speakers
- Power Sunvisors
- Rear Vision System with Audio and Adjustable Camera
- Molded Pilot Side Console with Two-Tier Cup Holder and Control Pad for Transmission Shifter
- Molded Co-Pilot Side Console with Two-Tier Cup Holder
- Leatherette Pilot and Co-Pilot Cockpit Recliner Seats
- Six-Way Power Pilot Seat
- Carpeted Driver and Passenger Floor Mats
- Wood Framed Front and Side Wing Cockpit Overhead Cabinets

## OPTIONS

- Six-Way Power Co-Pilot Seat
- Sirius Radio Satellite System (Requires Subscription)
- GPS Navigation System
- 3-Camera Rear Vision System with Audio and Adjustable Center Camera
- Interior Solar Privacy Sunscreens (Manual)

**APPLIANCES AND ACCESSORIES: FEATURES**

- Large Double-Door Refrigerator with Ice Maker 8 Cu. Ft.
- High-Output Three-Burner Cooktop
- Removable Solid Surface Range Covers
- Spacesaver Convection Microwave
- Washer/Dryer Prep (34SBD, 38PLT, 38SDD)
- 26" LCD Stereo Color TV with Remote Control in Cockpit Overhead (N/A: 38SDD)
- 32" LCD TV with Remote Control in Center of Coach Facing Living Area (38SDD)
- 20" LCD TV in Partition Wall Facing Dining Room Area (38SDD)
- 20" Color TV with Remote Control in Bedroom
- Curbside: Exterior Hook-Ups for DSS Dish, Cable, 110V Outlet with Hatch Door to Exterior
- Digital Satellite System Prep

**OPTIONS**

- Large Double-Door Refrigerator with Ice Maker 10 Cu. Ft.
- Large Four-Door Refrigerator with Ice Maker (N/A with Pantry)
- High-Output Three-Burner Range with Oven
- Combination Washer/Dryer (34SBD, 38PLT)
- Central Vacuum System
- Home Theater Surround Sound System with Sub-Woofer
- Bedroom DVD Player

**INTERIOR: FEATURES**

- Raised Panel Cabinet Doors
- Black ABS Refrigerator Insert
- Heavy-Duty Ball Bearing Drawer Guides
- Solid Surface Radius Profile Kitchen Countertop with Under-Mounted Stainless Steel Sink with Two Sink Covers
- Kitchen Countertop Extension
- Kitchen Countertop End Splash
- Laminated Countertops with Solid Surface Edge Treatment (Solid Surface Backsplash in Bathroom)
- Dinette Laminated Countertop with Solid Surface Edge Treatment
- Kitchen Pantry next to Refrigerator with Full-Height Roll-Out Storage Cabinet (N/A with Four-Door Refrigerator Option)
- Linoleum Flooring: Kitchen, Bath, Entry with Linoleum Runner from Entryway to Kitchen
- French Style Door into Bedroom (38PLT)
- Satin Black Cabinetry Hardware and Bath Accessories
- Blackout Day/Night Pleated Shades in Living Area and in Bedroom
- Hardwood Framed Pocket Doors

**OPTIONS**

- Decors: Essex, Escape and Alpine
- Wood Choices: Newport Cherry, Champagne Select

**FURNITURE: FEATURES**

- Queen Bed with Nightstands
- Party Table behind Co-Pilot Seat (34PDD)
- Arched Back Wood Booth Dinette with Side-Sliding Dinette Table Top (N/A: 38SDD)
- Roadside: Fabric Easy Bed Sofa
- Curbside: Fabric Easy Bed Sofa (N/A: 34PDD, 38SDD)
- Curbside: Two Leatherette Swivel Rocker Barrel Chairs with Center Table (38SDD)
- Bedroom: Two Fabric Swivel Rocker Barrel Chairs with Center Table (38PLT)
- Leatherette Swivel Rocker Barrel Chair (34PDD)

**OPTIONS**

- Roadside: Fabric Hide-A-Bed Sofa with Air Mattress
- Roadside: Leatherette Hide-A-Bed Sofa with Air Mattress
- Leatherette Euro-Recliner Chair with Ottoman IPO Fabric Swivel-Rocker Barrel Chair (34PDD)
- Roadside: Leatherette Ensemble Booth Dinette; Includes Leatherette Hide-A-Bed Sofa Selection with Air Mattress (Forward-Facing Seatbelts at Booth Dinette Location Not Available with This Option) (N/A: 38SDD)
- Curbside: Leatherette Easy Bed Sofa IPO Fabric Sofa (N/A: 34PDD, 38SDD)
- Curbside: One Leatherette Euro-Recliner Chair with Ottoman with Wall-Mounted Table IPO Sofa (N/A: 34PDD, 38SDD)
- Curbside: Two Leatherette Euro-Recliner Chairs with Ottoman and Center Table IPO Two Barrel Chairs
- Freestanding Dinette with Two Freestanding Chairs and Two Folding Chairs (N/A: 38SDD)

**HOLIDAYRAMBLER.COM**

Log on to our website anytime, night or day. It's your link to everything Holiday Rambler, including product news and updates, club events, dealer and service center info and much more. Take it for a test drive today.





**ELECTRICAL SYSTEMS AND LIGHTS: FEATURES**

- 50 Amp 120V Distribution Panel and Cord
- 55 Amp Electronic 12V Power Converter
- Onan® 6.0 kW Diesel Generator (N/A: 38PLT, 38SDD)
- Onan® 5.5 kW Gas Generator (38PLT, 38SDD)
- Two 6V House Batteries
- Two 12V Heavy-Duty Chassis Batteries
- Battery Disconnect Switch at Front Door
- Exterior Power Entry Step, with Light
- Interior Stepwell Entry Step Lights
- Water Pump Switch in Service Bay Area and Convenience Center
- Lights in Outside Storage Compartments
- Underhood Utility Light
- Two Recessed Ceiling Map Lights above Cockpit Seats
- Hallway Convenience Center
- Fluorescent Ceiling Lights in Living Area and Bath
- Decorative Lighting Throughout
- Three Recessed Ceiling Lights above Countertop Work Area Kitchen

**OPTIONS**

- 600 Watt Inverter

**PLUMBING AND LP SYSTEMS: FEATURES**

- Single Lever Satin Nickel Faucet with Pullout Sprayer in Kitchen
- Central Water Filtration System
- New Bath Lavatory Faucet (Satin Nickel Finish)
- Demand Water System and Water Pump
- 10-Gallon LP Gas/Electric Water Heater with Electronic Ignition (DSI)
- Winterization Valving System
- Water Heater Bypass Valve
- China Toilet with Sprayer
- No-Fuss Flush Holding Tank Rinsing System
- Insulated Systems Compartment with Easy Access to Hook-Up
- Shower inside Wet Bay with Hot/Cold Water Shower Head with Shut-Off
- Soap Dispenser inside Utility Bay
- Pressurized Water Fill
- Contained Storage Area for Sewer Hose
- One-Piece Fiberglass Shower
- Satin Nickel Shower Door Frame with Obscure Glass (34SBD, 34PDD)
- Rounded Satin Nickel Shower Door Frame with Decorative Glass (N/A: 34SBD, 34PDD)

**OPTIONS**

- Bathtub Option IPO Shower; Rounded Shower Stalls Will Be Neo-Angled with Tub Option

**HEATING, VENTS AND AIR CONDITIONING: FEATURES**

- Dual 13.5M BTU Air Conditioners with Ducted Air and Wall Digital Thermostat
- Electronic Ignition Furnace: 35M BTU (40M BTU on 38PLT)
- Kitchen Powered Attic Fan with Wall Control of Automatic Dome and Fan Power
- Bath Powered Attic Fan with Wall Control of Automatic Dome and Fan Power

**OPTIONS**

- Dual 13.5M BTU Air Conditioner with Heat Pumps
- 12V Heater in Wet Bay

**WINDOWS, DOORS AND AWNINGS: FEATURES**

- Radius Flush-Mounted Dual Pane Safety Glass Dark Tinted Slider Windows
- Patio Awning with Metal Cover
- Topper Slide-Out Awnings Living Area and Bedroom
- Tinted Skylight in Bathroom with Protecta Glaze

**OPTIONS**

- Automatic Patio Awning
- Bedroom Skylight (38PLT)
- Window Awnings Living Area Slide-Out House Windows
- Front Door Awning

**SAFETY: FEATURES**

- Fire Extinguisher
- Deadbolt Lock on Entrance Door
- 120V GFI Protected Circuit, Kitchen, Bath and Exterior
- LP Gas Detector
- Smoke Detector
- Carbon Monoxide Detector
- Pilot and Co-Pilot Three-Point Seatbelts
- Third Brake Safety Light
- Egress Windows

Due to continuous product improvement, please see the website for the latest in standards and options, specifications, and technical data. Go to [www.holidayrambler.com](http://www.holidayrambler.com).

Weights (Lbs.)*	34SBD	34PDD	36SBD	36WBD	38PLT	38SDD
Gross Vehicle Weight Rating	22,000	22,000	22,000	22,000	26,000	26,000
Gross Combined Weight Rating	26,000	26,000	26,000	26,000	30,000	30,000
Gross Axle Weight Rating (Front)	8,500	8,500	8,500	8,500	9,500	9,500
Gross Axle Weight Rating (Rear)	14,500	14,500	14,500	14,500	17,500	17,500
Measurements						
Wheelbase	192"	192"	216"	216"	242"	242"
Overall Length	35' 2"	35' 2"	37' 2"	37' 2"	38' 10"	38' 10"
Overall Height (Including A/C)	12' 5"	12' 5"	12' 5"	12' 5"	12' 5"	12' 8"
Interior Height (Increased Height to 84")	84"	84"	84"	84"	84"	84"
Interior Width	94.5"	94.5"	94.5"	94.5"	94.5"	94.5"
Exterior Width	100.5"	100.5"	100.5"	100.5"	100.5"	100.5"
Tank Capacity (Gal.)**						
Water Heater	10	10	10	10	10	10
Gray Tank	60	60	60	60	60	60
Black Tank	40	39	39	39	39	39
Fresh Tank	70	70	70	70	90	90
LP Tank***	20	20	20	20	20	20
Fuel Tank	75	75	75	75	75	100

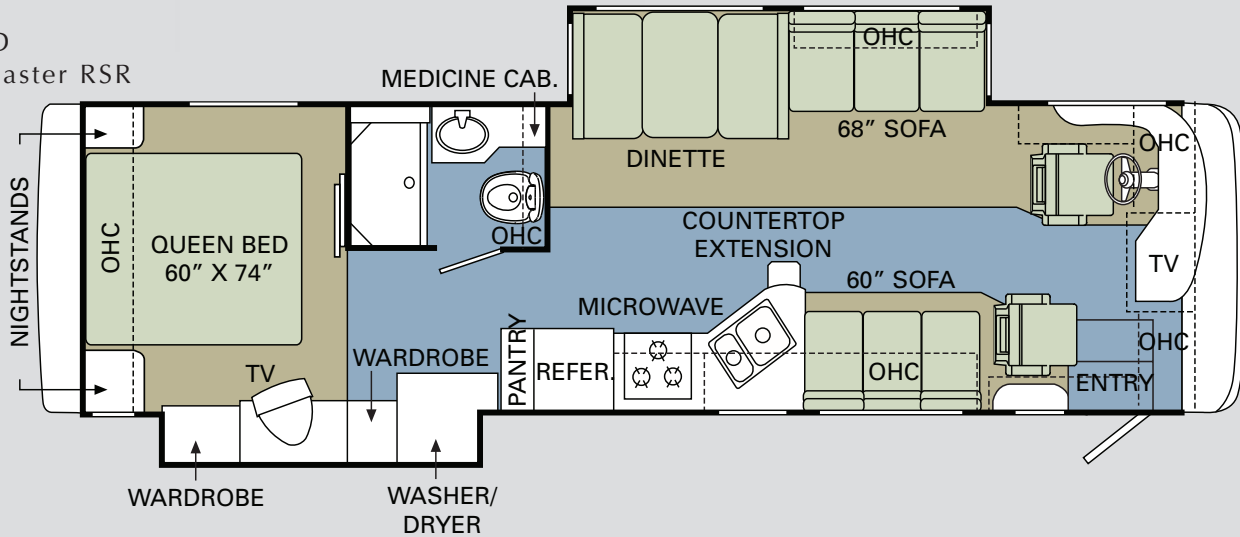
\* Towing capacity is limited by GCWR; your vehicle's towing capacity is the difference between the GCWR and the actual vehicle weight, including all water, fuel, passengers and cargo. Your towed vehicle should be equipped with auxiliary brakes if the weight of the towed vehicle exceeds 1,000 lbs. Consult your Owner's Manual for further towing information.

\*\* All tank capacities are estimated based upon calculations provided by the tank manufacturers and represent approximate capacities. The actual "usable capacity" may be greater or less than the estimated capacities based upon fabrication and installation of the tanks.

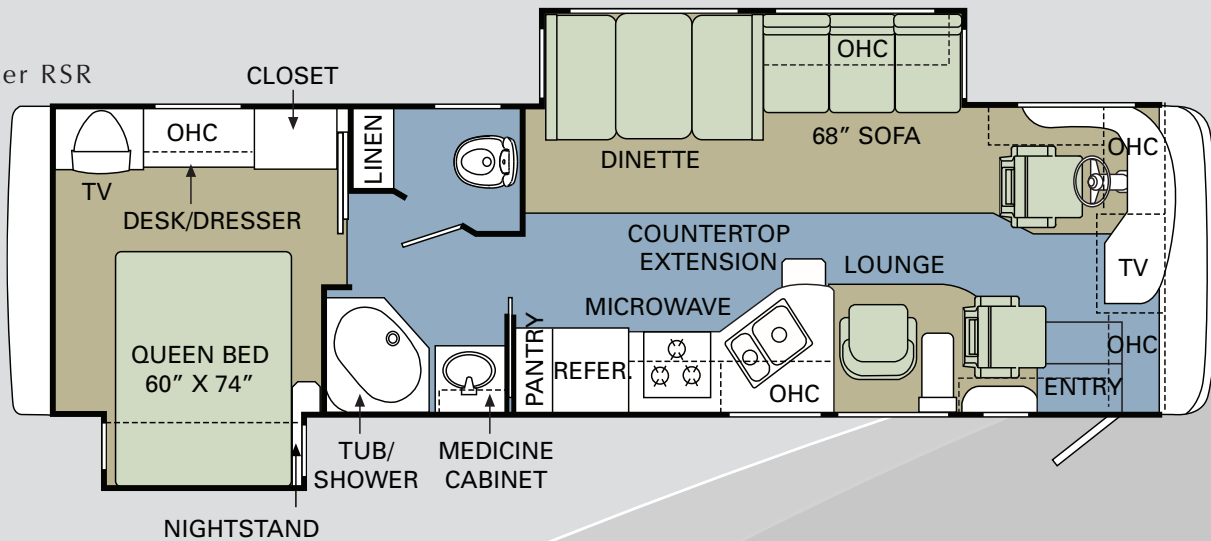
\*\*\* Actual filled LP capacity is 80% of listing due to safety shut-off required on tank.

The actual overall length of the recreational vehicle may differ from that indicated in the brochure due to variances in the manufacturing process and/or installed components. The actual length may be greater or less than that indicated. Due to the large variety of options and floorplan arrangements available to our customers, actual weights for each unit can differ significantly. Holiday Rambler provides a weight sticker on each unit we produce which includes that unit's tank capacities and approximate weight. Consult your local Holiday Rambler dealer for unit availability and further information. The information printed in this brochure reflects product design, fabrication, and component parts at the date of printing. The manufacturer reserves the right, at any time, to make changes in product design or material or component specifications as its sole option, without notice. This includes the substitution of components of a different brand or trade name which will result in comparable performance. All information printed in this brochure is subject to change after the date of printing. Some features shown or mentioned in this brochure are optional and may only be available in selected floorplans. Photographs may show props or decorations that are not standard equipment on Holiday Rambler models. Holiday Rambler, the Holiday Rambler logo and its design, are registered trademarks. All other products and company names are trademarks and/or registered trademarks of their respective holders. While the color of the motorhome's exterior and the interior fabrics depicted in this sales brochure are fair and reasonable depictions, the colors depicted may not be an exact match of the actual colors because of the variances in photo-processing and variances caused by inserting the photographs within the sales brochure. Due to product improvements, changes during the model year and/or transcription errors that may occur, information represented within this brochure may not be accurate at the time of your purchase. If certain information is significant to your purchasing decision, please confirm the information with your dealer prior to submitting your order. Component part and appliance manufacturers issue limited warranties covering those portions of the recreational vehicle not covered by the Limited Warranties issued by Monaco Coach Corporation. To learn which specific component parts and appliances are excluded from the Limited Warranties issued by Monaco Coach Corporation, please contact your selling dealership or Monaco Coach Corporation directly, or review the warranty packet inside the recreational vehicle.

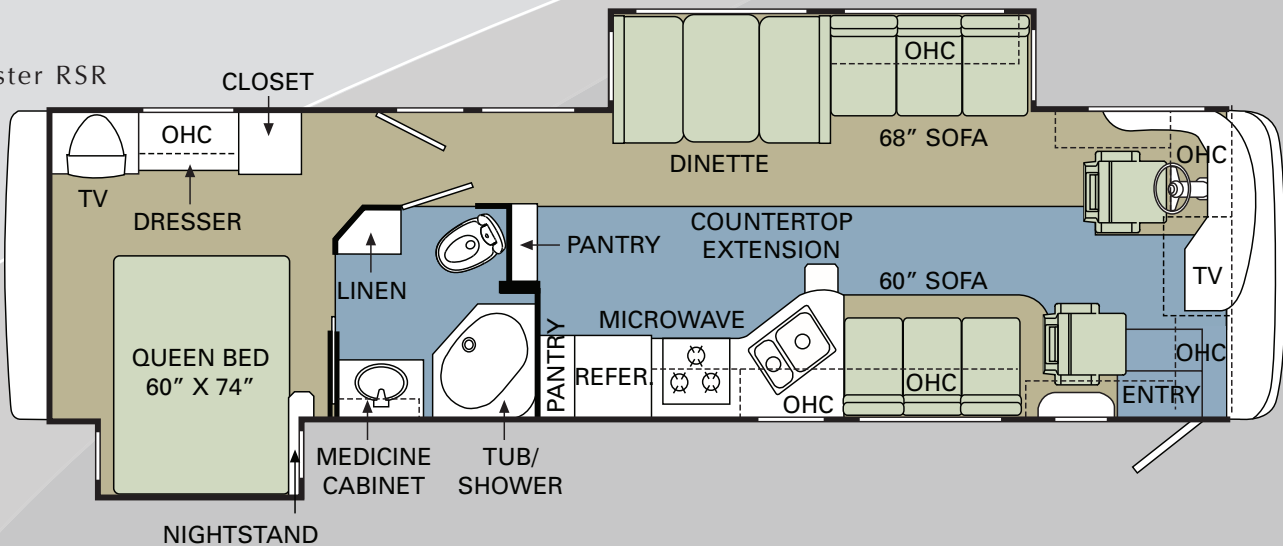
34SBD  
Roadmaster RSR



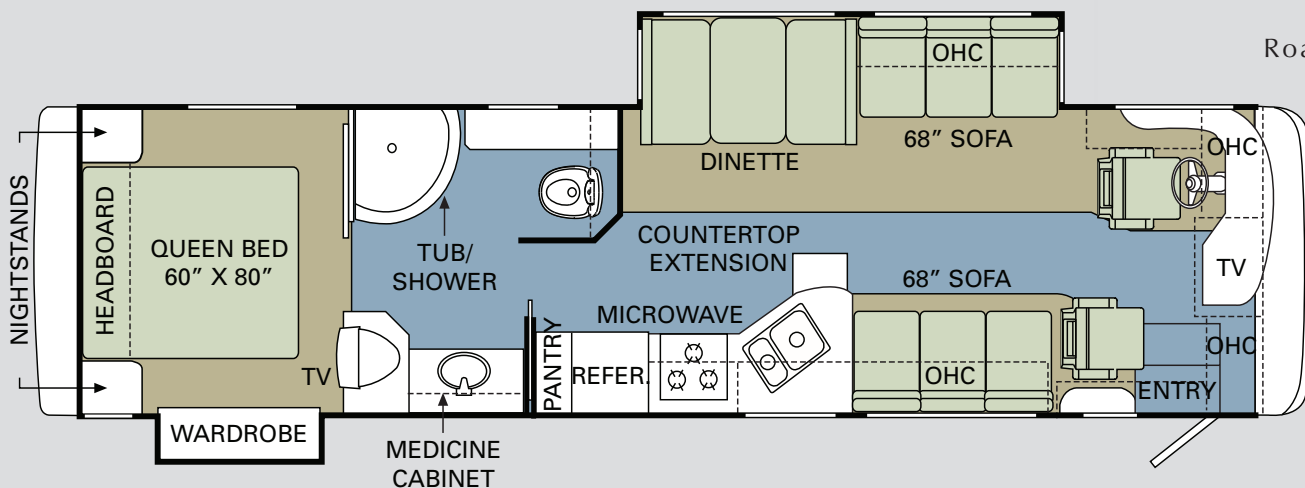
34PDD  
Roadmaster RSR



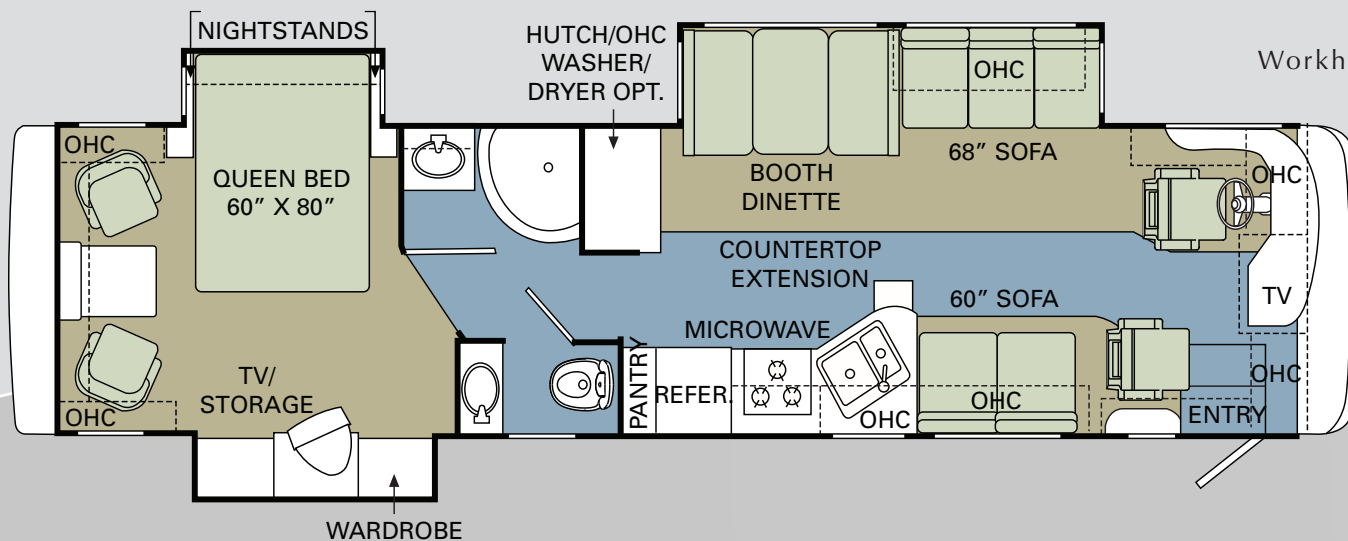
36SBD  
Roadmaster RSR



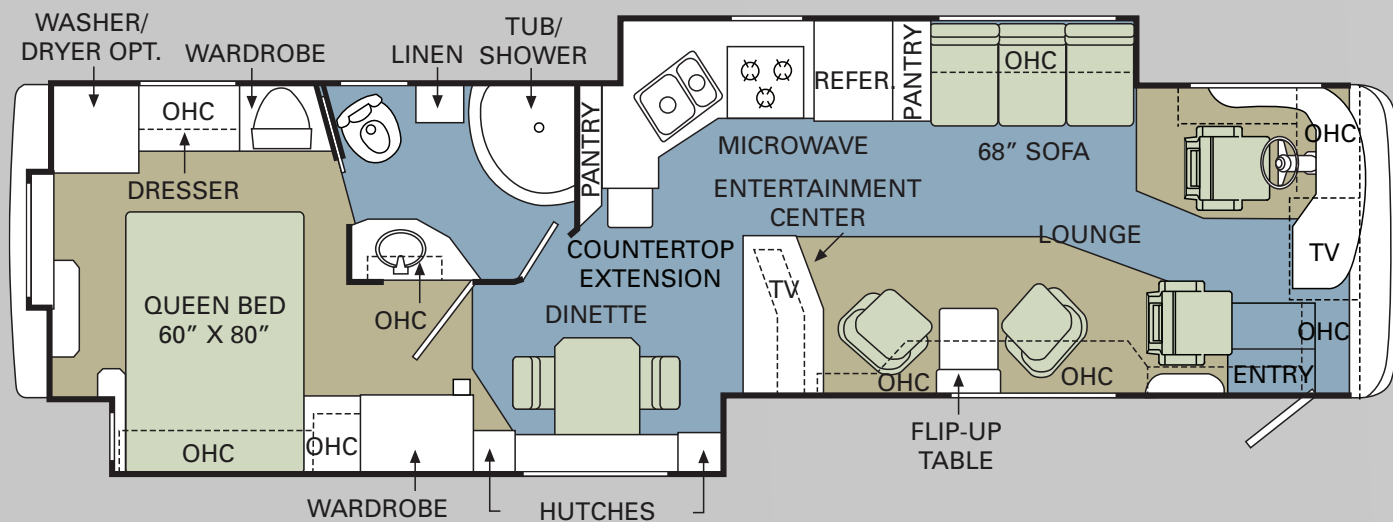
36WBD  
Roadmaster RSR



38PLT  
Workhorse UFO



38SDD  
Workhorse UFO





VACATIONER<sup>®</sup> XL  
2008

## BEING DIFFERENT MAKES ALL THE DIFFERENCE.

At Monaco Coach Corporation, we always strive to be the best. And that means thinking outside the box. Giving you more of what you want in an RV. Like our exclusive Roadmaster chassis. PanaSuite™ full-wall slides. And programs like Monaco Financial Services and 24/7 roadside assistance. No other manufacturer can match Monaco's offerings. No one even comes close. Why not discover the difference for yourself? Visit [www.monacodifferent.com](http://www.monacodifferent.com).

**"No other manufacturer can match Monaco's offerings.  
No one even comes close."**



## WARRANTIES

- 12 MONTH/24,000 MILE basic limited warranty
  - 5 YEAR/50,000 MILE limited warranty on aluminum or steel frame structure of sidewall, roof, front and rear cap
  - 3 YEAR/50,000 MILE limited warranty on Roadmaster chassis
  - 3 YEAR/36,000 MILE limited warranty on UFO chassis
- Applies to certain models. See owner's manual for complete details.



HOLIDAY RAMBLER<sup>®</sup>

*This is Living<sup>®</sup>*



MONACO COACH CORPORATION

606 Nelson's Parkway Wakarusa, IN 46573  
[www.holidayrambler.com](http://www.holidayrambler.com) | 800-245-4778



Monaco is traded on the New York Stock Exchange under the listing MNC.  
© 2007, Monaco Coach Corporation 07/07 NPN: BROHVACD Litho in USA.