

**FLEETWOOD.RV**

**Discovery**  
BY **FLEETWOOD.RV**

1 9 9 9

# T HE DIESEL THAT SAYS YOU'VE ARRIVED.

At Fleetwood RV, we've been making America's favorite recreational vehicles for nearly 50 years. We've done it by building honest value, rugged dependability and peace of mind into every one of them. As number one in its class, Discovery is built for those who want all the power and luxury associated with a diesel Fleetwood RV. Besides its generous diesel power and renowned gliding air-ride suspension, Discovery has wonderfully inviting residential accommodations. These interiors feature oak plank flooring, porcelain sinks with Corian® countertops, convection carousel microwave oven, built-in TV with VCR, and optional leather furniture. The sumptuous bedroom has its own television and stereo system that can turn your sanctuary into a private theater. Something else that's special on select models is our EZ Glide™ Room Slide-out System that makes your RV roomier at the touch of a button. Our EZ Store™ Storage System moves with the slide-out room, so you have easy access to storage below. The Discovery exterior is equally distinctive. From the all-new full-fiberglass front-end cap, halogen headlamps and massive wraparound windshield to the bold, dramatic color schemes and optional awning, Discovery says you've arrived. Which is what makes Discovery the first choice of those who want to step up to unsurpassed driving and climbing power in a luxurious motor home.

## 1999 DISCOVERY SPECIFICATIONS

Freightliner Chassis	34Q	36A	36R	36T	37V
Cummins Diesel Engine	275 hp	275 hp	275 hp	275 hp	275 hp
Wheelbase	208"	228"	228"	228"	242"
GVWR lbs <sup>1</sup>	24,850	24,850	24,850	24,850	24,850
GCWR lbs <sup>2</sup>	29,850	29,850	29,850	29,850	29,850
GAWR (front) lbs <sup>3</sup>	9,350	9,350	9,350	9,350	9,350
GAWR (rear) lbs <sup>3</sup> (incl. tag)	15,500	15,500	15,500	15,500	15,500
Base Weight lbs	18,700	18,640	18,650	19,420	20,330

Dimensions	34Q	36A	36R	36T	37V
Length	34' 7"	36' 3"	36' 3"	36' 3"	37' 5"
Height	12' 1"	12' 1"	12' 1"	12' 1"	12' 1"
Overall Width	102"	102"	102"	102"	102"
Interior Height	79"	79"	79"	79"	79"
Interior Width	96"	96"	96"	96"	96"

Liquid Capacities (gallons)	34Q	36A	36R	36T	37V
Fresh Water Holding	80	80	80	80	80
Water Heater with Auto Ignition	6	6	6	6	6
Black Water Holding	40	40	40	50	50
Grey Water Holding	60	60	60	65	65
Appliance LPG Tank*	25	25	25	25	25
Generator LPG Tank*	40	40	40	40	40
Fuel Tank	90	90	90	90	90

### Appliances, Standard Equipment

22" 3-burner Range	6 Gallon Quick Recovery Water Heater w/D.S.I.	
.7-cu. ft. Eye-level Convection/Microwave	Furnace 20m BTU/25m (dual)	Monitor Panel
20" TV in Front Overhead	Marine Toilet	Folding Range Cover
13" TV in Rear Bedroom	Water Filter w/Faucet	Single Lever Galley Faucet
Water Heater Bypass	Demand Water Pump w/Filter	Light/Power Rangehood
12-cu. ft. Side-by-side Refrigerator		

Appliances, Options	34Q	36A	36R	36T	37V
22" 3-burner Range w/Oven	Opt	Opt	Opt	Opt	Opt
Washer/Dryer	N/A	Opt	Opt	Opt	Opt

<sup>1</sup> GVWR (Gross Vehicle Weight Rating): Maximum permissible weight of this motor home. The GVWR is equal to or greater than the sum of the unloaded vehicle weight plus the net carrying capacity.

<sup>2</sup> GCWR (Gross Combination Weight Rating): Value specified by the motor home manufacturer as the maximum allowable loaded weight of this motor home with its towed trailer or towed vehicle.

<sup>3</sup> GAWR (Gross Axle Weight Rating): Maximum permissible loaded weight a specific axle is designed to carry.

\*Tank manufacturer's listed water capacity (WC) actual filled. LP capacity is 80% of listing due to safety shut off required on tank.

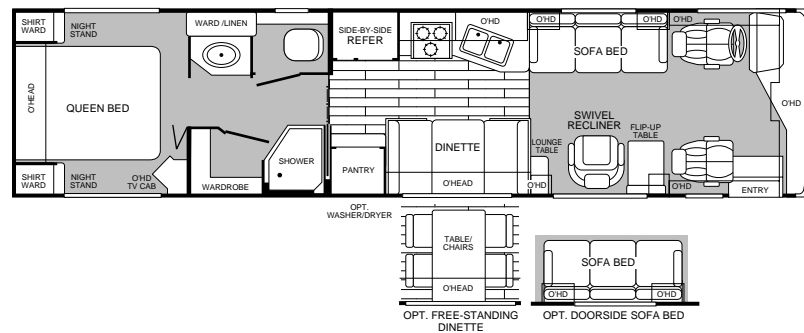
MODEL  
**34Q**

- Living room/galley slide-out
- Island queen bed
- Side-by-side refrigerator
- Swivel recliner
- Dinette or opt'l table w/chairs



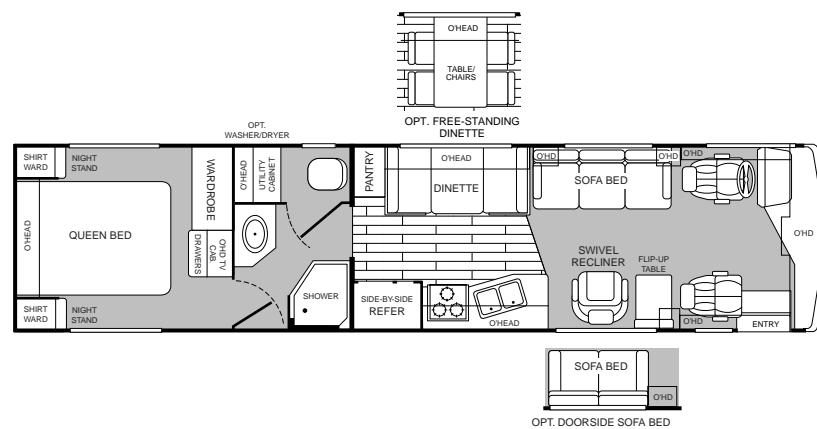
MODEL  
**36A**

- Island queen bed
- Private toilet
- Side-by-side refrigerator
- Dinette or opt'l table w/chairs
- Opt'l doorside sofa bed



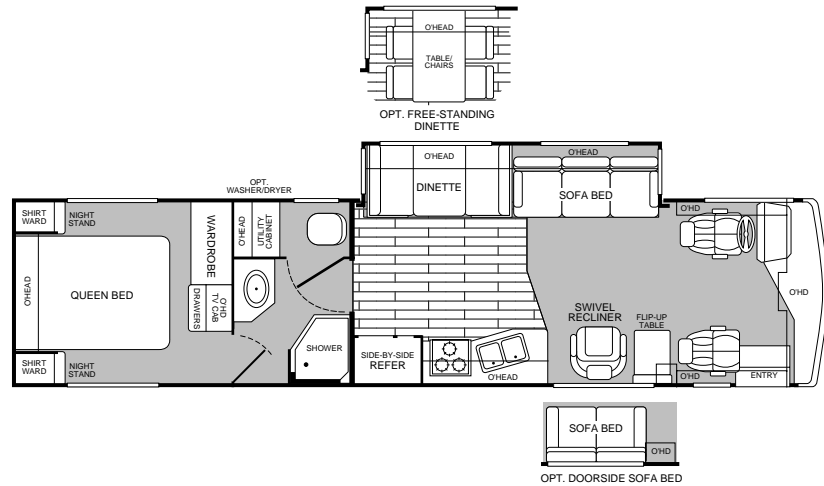
MODEL  
**36R**

- Island queen bed
- Private toilet
- Side-by-side refrigerator
- Dinette or opt'l table w/chairs
- Opt'l doorside sofa bed



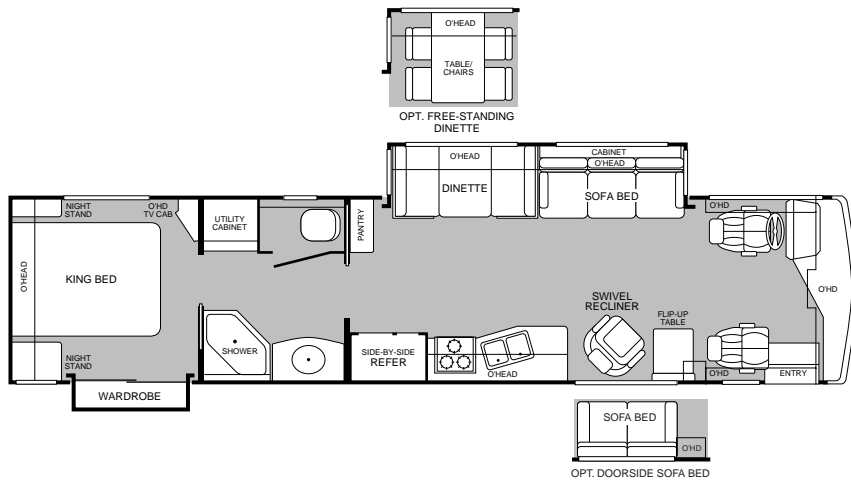
MODEL  
**36T**

- Island queen bed
- Swivel recliner
- Large bedroom wardrobe
- Dual pantries
- Dinette or opt'l table w/chairs



MODEL  
**37V**

- Living room/galley slide-out
- Island king bed
- Dinette or opt'l table w/chairs
- Side-by-side refrigerator
- Opt'l doorside sofa bed



# 1999 DISCOVERY FEATURES AND AVAILABLE EQUIPMENT

## Exterior Automotive and Electrical, *Standard Equipment*

Wraparound Windshield	Single Motor Windshield Wiper System	
OEM Electronic Cruise Control	Hydraulic Levelers-Manual	Rear Vision Camera
Fiberglass Front/Rear Bumpers	Radial Tires-Michelin	Intermittent Wipers
6.5 Onan® Generator	Underhood Utility Light	Undercoating
Large Automotive Halogen Headlamps	Stainless Steel Wheel Simulators	Mud Flaps
Radio Switch-Main or Auxiliary Battery	Dual 6-volt Battery-217-amp	Fog Lights
Trailer Hitch-5,000 lbs	Remote Heated Rearview Mirrors w/Indicator Lamp	
Valve Stem Extenders	Steel Surface on Firewall	

## Interior Automotive, *Standard Equipment*

3-point Front Seat Belts	Reclining Captains Chairs	Auxiliary Start Circuit
Auto AC/Heater Combo	Battery Shut Off Switch	Dash Fans
Tilt Steering Wheel	Soft Surface Automotive Dash	

## Exterior, *Standard Equipment*

Full Fiberglass Front-end Cap	Fiberglass Front Quarter Panels	Rubber Roof
One-piece Engine Access Door	Fiberglass Rear Wheel Trim	Large Viewing Windows
Dual Glazed Windows	Full Fiberglass Rear Cap	Awning Rail Drip Molding
Power Entry Step	TV Antenna	Roof Ladder
20' Sewer Hose	Black Powder-coated Luggage Door Frames	
Luggage Compartment Lights	Aluminum/Vacubond Luggage Compartment Doors	
Roto-cast Luggage Compartments	Radius Entry Door w/Deadbolt Latch (keyed alike)	
Lower Body Accent Paint	Modular Entry Step Compartment	Slider Windows
Hyd. Levelers, 4-point Manual	Utility Compartment	Pass-through Storage
Exterior Shower at Water Pump Compartment	Exterior Assist Handle	Remote Heated Rearview Mirror

Exterior, <i>Options</i>	34Q	36A	36R	36T	37V
Awning	Opt	Opt	Opt	Opt	Opt
Aluminum Wheels	Opt	Opt	Opt	Opt	Opt
Front Mask	Opt	Opt	Opt	Opt	Opt
Satellite Dish	Opt	Opt	Opt	Opt	Opt
7.5kw Quiet Diesel Generator	Opt	Opt	Opt	Opt	Opt
Upgrade Graphics Package	Opt	Opt	Opt	Opt	Opt

## Safety, *Standard Equipment*

Smoke Detector	Carbon Monoxide Detector	Fire Extinguisher
LPG Detector	Emergency Exit Window	

## Lighting, *Standard Equipment*

Wall Sconces	Makeup Lights	Wardrobe Lights
Decor Lights	Porch Light	Fluorescent Ceiling /Dual Bulb
Incandescent Lighting		

## Electrical, *Standard Equipment*

Patio Receptacle	120v/12v AC/DC Covert. Central Elect. Panel w/Charger	
120v/12v Wire Raceway	Water Pump Switching	6.5kw Generator

## Electrical, *Standard Equipment Cont.*

30-amp Service	Wall Switches	ECC Climate Control
Dual 6v Deep Cycle-217-Amp House Batteries	Park Cable Reception	Dual Battery Charge Control
Dual Roof High Efficiency A/C w/Solar Charger	1000-watt Inverter/Converter	

## Interior, *Standard Equipment*

3 Interior Decors	Rear Speakers in Bedroom	Radius Corner Cabinetry
Wood Trim Tabletops	Corian® Countertops	Window Coverings
Bathroom Trim	Entry Rail (oak & brass)	Battery Disconnect
Roller Guide Drawer Slides w/Ship Locks	Brass Glass Shower Door	Large Residential Wood Drawers
Bright Brass Door & Drawer Hardware	Power Bath Vent	VCR
Skylight in Tub/Shower	Rear 13" TV/Front 20" TV	TV Cabinet-Rear Bed
Molded Tub or Shower w/One-piece Enclosure	Large Slide-out Dinette Bins	Carpet Pad
Residential Grade Linoleum at Water Closet	Plankwood Flooring in Galley	Wall-to-wall Carpet
Vinyl-wrapped Overhead Construction	Miniblinds & Pleated Shades	Pillow Top Mattress
Headboard w/Decorative Mirrors	Telephone Jack	Fantastic® Power Roof Vent
Residential Style Wainscot w/Paneling	Upholstered Side Dinette Seats w/Camel Back	
Solid Wood Cabinet Doors & Drawer Faces	Radio w/Cassette AM/FM/Electronic Tuner	

Interior, <i>Options</i>	34Q	36A	36R	36T	37V
Leather Sofa Bed	Opt	Opt	Opt	Opt	Opt
Dinette Table w/Freestanding Chairs	Opt	Opt	Opt	Opt	Opt
Sofa Bed	Opt	Opt	Opt	Opt	Opt
Power Driver Seat	Opt	Opt	Opt	Opt	Opt
Leather Power Driver Seat	Opt	Opt	Opt	Opt	Opt
Cedar Lining in Wardrobe	N/A	Std	N/A	N/A	Std
Wood Blinds	Opt	Opt	Opt	Opt	Opt

## Platform Construction and Body Structure, *Standard Equipment*

Aluminum & Composite Design	Box Vibration Isolators	Power Platform
Basement Configuration	Vacubond Floor	Steel I-Beams
Lightweight Hull Construction	Vertical Rear Wall	Steel Outriggers
Interlocking Aluminum Extrusions	Vacubond Walls w/Hi-gloss Exterior Fiberglass	
Domed Roof w/Ducted A/C System	Heated Water & Holding Tank Compartments	
All Steel Undercarriage Modular LPG Tank Supports		

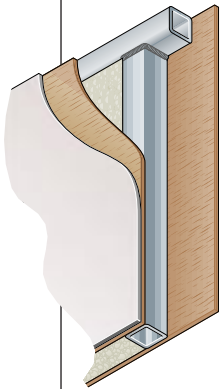
Slide-out	34Q	36A	36R	36T	37V
Galley	Std	N/A	N/A	N/A	N/A
Living Room	N/A	N/A	N/A	Std	Std
Wardrobe	N/A	N/A	N/A	N/A	Std

Sleeping Accommodations, <i>Standard</i>	34Q	36A	36R	36T	37V
Convertible Sofa	46" x 76"	46" x 76"	46" x 76"	46" x 76"	46" x 76"
Dinette	39" x 74"	39" x 74"	39" x 74"	39" x 74"	39" x 74"
Queen Bed	60" x 74"	60" x 74"	60" x 74"	60" x 74"	60" x 79"

Sleeping Accommodations, <i>Options</i>	34Q	36A	36R	36T	37V
Convertible Sofa	46" x 52"	46" x 52"	46" x 52"	46" x 52"	46" x 52"

# WHEN THE DUST SETTLES, THERE'S NOT AN RV IN THE WORLD THAT'S TESTED LIKE A FLEETWOOD RV.

If anyone loves to tear an RV apart, it's us. Because at Fleetwood RV nothing's more important than your safety and comfort. While our improvements aren't all visible to the eye, we commit millions of dollars a year in product development and research to build what we believe are the finest RVs in the world.



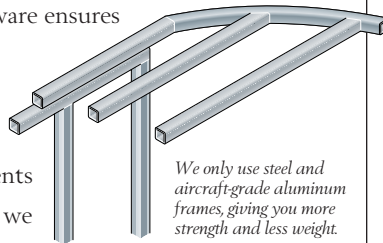
*Vacubond construction ensures that every roof, wall and floor is completely sealed.*

It all starts with advanced computer analysis of new prototype designs. Once built, the prototypes undergo rigorous load bearing and weight distribution stress tests. Stringent load analysis software ensures improved reliability.

Then the relentless testing and re-testing of components begins. In a couple of weeks we can simulate years of real world

use. Slide-out mechanisms have to open and shut thousands of times without a complaint. Seat belts must withstand more than three-ton stress levels without a whimper. And doors have to endure tens of thousands of slammings without losing their composure.

At the end of the day, we've thrown just about anything and everything we can at our units, just to make sure we have the best designed and most thoroughly tested RVs in the world. Then we back them with a limited 1-year/3-year warranty supported by Fleetwood RV dealers throughout the U.S. and Canada. So you have what we believe to be the best-handling, safest, most comfortable RV anywhere.



*We only use steel and aircraft-grade aluminum frames, giving you more strength and less weight.*

Dear Friend,

Here at Fleetwood RV, we have over 200 people working on research and development. But we get our best ideas when we hit the road in our recreational vehicles. Talking to people like you and noticing for ourselves little ways to make RVing more comfortable, more convenient and more fun.



If I had two pieces of free advice to give a friend in the market for an RV, the first would be to get a Fleetwood RV. Not because we need to sell one more. Heck, we sell more than anyone else. But because I know we build the best product out there for the money.

Second, really think about your dealer. He has to be someone you trust for advice, service and accessories. Only the best get to be Fleetwood RV dealers in the first place. Then we work with them to continually improve customer satisfaction. That's why 9 out of 10 owners would recommend their Fleetwood RV to a friend and 9 out of 10 of them would also recommend their Fleetwood RV dealer.

I hope that helps. And I also hope I see you out there, somewhere in this beautiful world, enjoying your new Fleetwood RV while I'm out there doing the same.

John C. Crean

Chairman Emeritus and Founder  
Fleetwood Enterprises, Inc.

*Your local Fleetwood RV dealer is:*

*If your local dealer is not indicated, write to the address below, or call us toll free 24 hours a day at 1-800-444-4905. Or visit our Website at <http://www.fleetwood.com>*

**FLEETWOOD RV**

**America's Favorite Recreational Vehicles**

Fleetwood Enterprises, Inc.  
P.O. Box 2875, Van Nuys, CA 91404-2875

Product information and photography included in this brochure were as accurate as possible at the time of publication. Subsequent refinements may be evident in the actual product. Prices and specifications are subject to change without notice. All fuel and liquid capacities are approximate and dimensions are nominal. Fleetwood has designed its motor home brands to provide a variety of potential uses for its customers. Each unit features the optimum storage, fluid, seating and sleeping capabilities. Though the customer enjoys this potential, he/she also has the responsibility to select the proper combinations of loads without exceeding the chassis weight capacities.