

FLEETWOOD.RV

Flair®

1 9 9 9

T

HE PERFECT HOME AWAY FROM HOME.

At Fleetwood RV, we've been making America's favorite recreational vehicles for nearly 50 years. We've done it by building honest value, rugged dependability and peace of mind into every one of them. The 1999 Flair is a perfect example. Everything about it is new, except its long tradition of uncompromising quality. As the most affordable Fleetwood RV Class A, Flair is loaded with value. It starts with the new full basement that gives the coach a level floor, letting passengers share the same expansive view as the driver. Plus, it opens up lots of new storage room below. Also new this year is a flat ceiling with ducted A/C that increases headroom and storage throughout. Not to mention a spacious new bedroom suite that dreams are made of. Our EZ Glide™ Room Slide-out System effortlessly makes your RV even roomier with the flip of a switch on some models. And you can now have easy access to the storage area below the slide-out with our new EZ Store™ Storage System which moves in and out with the slide-out room. On the outside, the sleek, newly-designed full-fiberglass front-end cap, bonded wraparound windshield, one-piece exterior walls and contemporary graphics create a striking profile. So, whether you're at the lake, the mountains, or on the road, you don't have to ever leave the comforts of home behind when you're in your Flair.

1999 FLAIR SPECIFICATIONS

| Chevrolet Chassis | 25Y | 30H | 34D | 32V |
|--|-----------|-----------|-----|-----|
| Engine CID | 454 | 454 | N/A | N/A |
| Wheel Base | 159" | 190" | N/A | N/A |
| GVWR lbs ¹ | 14,800 | 16,500 | N/A | N/A |
| GCWR lbs ² | 20,000 | 20,000 | N/A | N/A |
| GAWR (front) lbs ³ | 5,500 | 5,500 | N/A | N/A |
| GAWR (rear) lbs ³ (incl. tag) | 11,000 | 11,000 | N/A | N/A |
| Hitch Rating/Tongue wt. lbs | 3,500/250 | 3,500/250 | N/A | N/A |
| Fuel Capacity (gal/lbs) | 75/450 | 75/450 | N/A | N/A |

| Ford Chassis | 25Y | 30H | 34D | 32V |
|--|-----|-----------|-----------|-----------|
| Engine LD | N/A | 6.8 | 6.8 | 6.8 |
| Wheel Base | N/A | 190" | 208" | 208" |
| GVWR lbs ¹ | N/A | 18,000 | 20,500 | 20,500 |
| GCWR lbs ² | N/A | 21,500 | 24,000 | 24,000 |
| GAWR (front) lbs ³ | N/A | 7,000 | 7,000 | 7,000 |
| GAWR (rear) lbs ³ (incl. tag) | N/A | 11,000 | 13,500 | 13,500 |
| Hitch Rating/Tongue wt. lbs | N/A | 3,500/250 | 3,500/250 | 3,500/250 |
| Fuel Capacity (gal/lbs) | N/A | 75/450 | 75/450 | 75/450 |

| Dimensions | 25Y | 30H | 34D | 32V |
|---------------------|---------|---------|---------|--------|
| Length | 26'0" | 31' 0" | 35' 0" | 33'0" |
| Height (w/roof A/C) | 11' 10" | 11' 10" | 11' 10" | 11'10" |
| Width | 102" | 102" | 102" | 102" |
| Interior Height | 79" | 79" | 79" | 79" |
| Interior Width | 96" | 96" | 96" | 96" |

| Liquid Capacities (gallons) | 25Y | 30H | 34D | 32V |
|-----------------------------|-----|-----|-----|-----|
| Fresh Water Holding | 100 | 100 | 80 | 80 |
| Black Water Holding | 50 | 50 | 50 | 50 |
| Grey Water Holding | 50 | 50 | 50 | 50 |
| Appliance LPG Tank* | 25 | 25 | 25 | 25 |

¹ GVWR (Gross Vehicle Weight Rating): Maximum permissible weight of this motor home. The GVWR is equal to or greater than the sum of the unloaded vehicle weight plus the net carrying capacity.

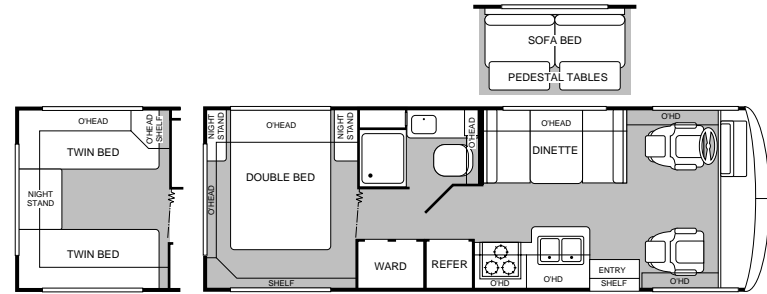
² GCWR (Gross Combination Weight Rating): Value specified by the motor home manufacturer as the maximum allowable loaded weight of this motor home with its towed trailer or towed vehicle.

³ GAWR (Gross Axle Weight Rating): Maximum permissible loaded weight a specific axle is designed to carry.

*Tank manufacturer's listed water capacity (WC) actual filled. LP capacity is 80% of listing due to safety shut off required on tank.

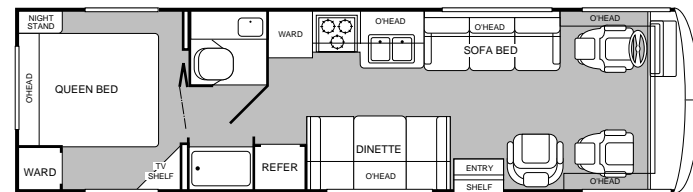
MODEL
25Y

- Island double bed
- Private bathroom
- Dinette or opt'l sofa bed
- Double door wardrobe
- Opt'l twin beds



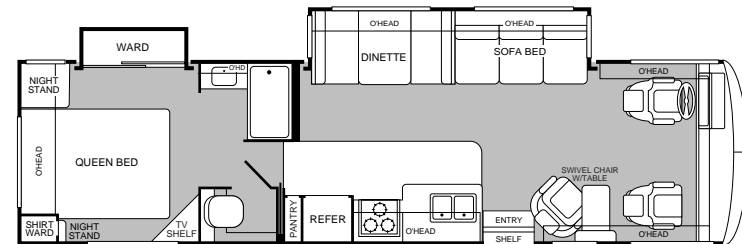
MODEL
30H

- Island double bed
- Private bathroom
- Dinette or opt'l sofa bed
- Double door wardrobe
- Opt'l twin beds



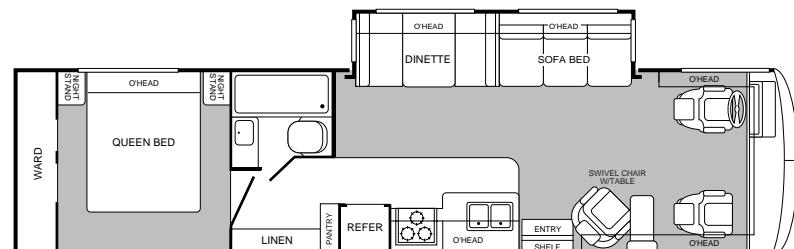
MODEL
32V

- Living room slide-out
- Wardrobe slide-out
- Island queen bed
- Private toilet
- Swivel chair



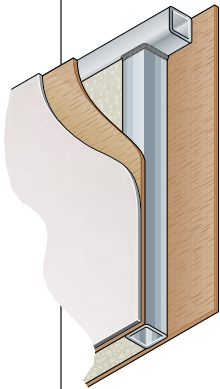
MODEL
34D

- Living room slide-out
- Island queen bed
- Fully enclosed bathroom
- Large wardrobe
- Swivel chair w/table



WHEN THE DUST SETTLES, THERE'S NOT AN RV IN THE WORLD THAT'S TESTED LIKE A FLEETWOOD RV.

If anyone loves to tear an RV apart, it's us. Because at Fleetwood RV nothing's more important than your safety and comfort. While our improvements aren't all visible to the eye, we commit millions of dollars a year in product development and research to build what we believe are the finest RVs in the world.



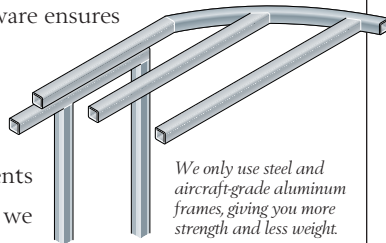
Vacubond construction ensures that every roof, wall and floor is completely sealed.

It all starts with advanced computer analysis of new prototype designs. Once built, the prototypes undergo rigorous load bearing and weight distribution stress tests. Stringent load analysis software ensures improved reliability.

Then the relentless testing and re-testing of components begins. In a couple of weeks we can simulate years of real world

use. Slide-out mechanisms have to open and shut thousands of times without a complaint. Seat belts must withstand more than three-ton stress levels without a whimper. And doors have to endure tens of thousands of slammings without losing their composure.

At the end of the day, we've thrown just about anything and everything we can at our units, just to make sure we have the best designed and most thoroughly tested RVs in the world. Then we back them with a limited 1-year/3-year warranty supported by Fleetwood RV dealers throughout the U.S. and Canada. So you have what we believe to be the best-handling, safest, most comfortable RV anywhere.



We only use steel and aircraft-grade aluminum frames, giving you more strength and less weight.

Dear Friend,

Here at Fleetwood RV, we have over 200 people working on research and development. But we get our best ideas when we hit the road in our recreational vehicles. Talking to people like you and noticing for ourselves little ways to make RVing more comfortable, more convenient and more fun.



If I had two pieces of free advice to give a friend in the market for an RV, the first would be to get a Fleetwood RV. Not because we need to sell one more. Heck, we sell more than anyone else. But because I know we build the best product out there for the money.

Second, really think about your dealer. He has to be someone you trust for advice, service and accessories. Only the best get to be Fleetwood RV dealers in the first place. Then we work with them to continually improve customer satisfaction. That's why 9 out of 10 owners would recommend their Fleetwood RV to a friend and 9 out of 10 of them would also recommend their Fleetwood RV dealer.

I hope that helps. And I also hope I see you out there, somewhere in this beautiful world, enjoying your new Fleetwood RV while I'm out there doing the same.

John C. Crean



Chairman Emeritus and Founder
Fleetwood Enterprises, Inc.

Your local Fleetwood RV dealer is:

If your local dealer is not indicated, write to the address below, or call us toll free 24 hours a day at 1-800-444-4905. Or visit our Website at <http://www.fleetwood.com>

FLEETWOOD RV

America's Favorite Recreational Vehicles

Fleetwood Enterprises, Inc.
P.O. Box 2875, Van Nuys, CA 91404-2875

Product information and photography included in this brochure were as accurate as possible at the time of publication. Subsequent refinements may be evident in the actual product. Prices and specifications are subject to change without notice. All fuel and liquid capacities are approximate and dimensions are nominal. Fleetwood has designed its motor home brands to provide a variety of potential uses for its customers. Each unit features the optimum storage, fluid, seating and sleeping capabilities. Though the customer enjoys this potential, he/she also has the responsibility to select the proper combinations of loads without exceeding the chassis weight capacities.