

**FLEETWOOD.RV**

***Jamboree***<sup>®</sup>  
BY **FLEETWOOD.RV**

1 9 9 9

# P ERFECT FOR YOUR ACTIVE LIFESTYLE.

At Fleetwood RV, we've been making America's favorite recreational vehicles for nearly 50 years. We've done it by building honest value, rugged dependability and peace of mind into every one of them. Jamboree is a good example. With its contemporary, sporty styling, these attractive motor homes are an outstanding value. This year, Fleetwood RV is offering both the popular Jamboree and the flagship Jamboree GT. And they're so easy to drive, they'll remind you of a car or a pickup. Unique floor plans range in size from 21' to 31' with EZ Glide™ Slide-out Room configurations available on select models. Perfect for short-term vacations and camping, Jamboree is made for your outdoor sports adventures like boating, hunting, off-roading and skiing. New this year is our exclusive Mor-ryde® Suspension Enhancement System\* that provides you with a smoother, quieter ride than any other mini motor home. The Mor-ryde® System not only reduces suspension vibration, but also protects against damaging road shock. Some models even include a 4x4 option that lets you handle winter travel in snow or icy conditions with confidence. All in all, the Jamboree is the way to go when you're looking for style and quality in a surprisingly affordable motor home that you'll be proud to call home.

\*Selected models.

<sup>1</sup> GVWR (Gross Vehicle Weight Rating): Maximum permissible weight of this motor home. The GVWR is equal to or greater than the sum of the unloaded vehicle weight plus the net carrying capacity.

<sup>2</sup> GAWR (Gross Axle Weight Rating): Maximum permissible loaded weight a specific axle is designed to carry.

<sup>3</sup> GCWR (Gross Combination Weight Rating): Value specified by the motor home manufacturer as the maximum allowable loaded weight of this motor home with its towed trailer or towed vehicle.

<sup>4</sup> Overall lengths taken from front bumper to rear bumper.

<sup>5</sup> Tank manufacturer's listed water capacity (WC) actual filled. LP capacity is 80% of listing due to safety shut off required on tank. \*Limited by second-stage manufacturer to 3500 lbs over GVWR.

## 1999 JAMBOREE SPECIFICATIONS

Ford Chassis	GT MODELS								
	22C	23B	24D	26F	29L	29V	29H	31K	31W
Engine CID	415	415	415	415	415	415	415	415	415
Wheelbase	138"	158"	158"	176"	190"	190"	214"	214"	214"
GVWR lbs <sup>1</sup>	10,500	11,500	11,500	14,050	14,050	14,050	14,050	14,050	14,050
GAWR (front) lbs <sup>2</sup>	3,800	4,600	4,600	4,600	4,600	4,600	4,600	4,600	4,600
GAWR (rear) lbs <sup>2</sup>	7,500	7,810	7,810	9,450	9,450	9,450	9,450	9,450	9,450
GCWR lbs <sup>3</sup>	14,000*	15,000*	15,000*	17,550*	17,550*	17,550*	17,550*	17,550*	17,550*

Chevrolet Chassis	GT MODELS								
	22C	23B	24D	26F	29L	29V	29H	31K	31W
Engine CID	454	454	454	N/A	N/A	N/A	N/A	N/A	N/A
Wheelbase	139"	159"	159"	N/A	N/A	N/A	N/A	N/A	N/A
GVWR lbs <sup>1</sup>	12,300	12,300	12,300	N/A	N/A	N/A	N/A	N/A	N/A
GAWR (front) lbs <sup>2</sup>	4,300	4,300	4,300	N/A	N/A	N/A	N/A	N/A	N/A
GAWR (rear) lbs <sup>2</sup>	8,600	8,600	8,600	N/A	N/A	N/A	N/A	N/A	N/A
GCWR lbs <sup>3</sup>	15,800*	15,800*	15,800*	N/A	N/A	N/A	N/A	N/A	N/A

Dimensions	GT MODELS								
	22C	23B	24D	26F	29L	29V	29H	31K	31W
Overall Length-Ford <sup>4</sup>	22' 5"	23' 8"	24' 6"	26' 7"	29' 3"	29' 3"	29' 11"	31' 4"	31' 4"
Overall Length-Chevy <sup>4</sup>	22' 10"	24' 1"	24' 11"	N/A	N/A	N/A	N/A	N/A	N/A
Overall Height w/A/C	131"	131"	131"	138"	138"	138"	138"	138"	138"
Overall Width (max.)	99"	99"	99"	99"	99"	99"	99"	99"	99"
Interior Height (max.)	83"	83"	83"	83"	83"	83"	81"	81"	81"
Interior Width (max.)	96"	96"	96"	96"	96"	96"	96"	96"	96"

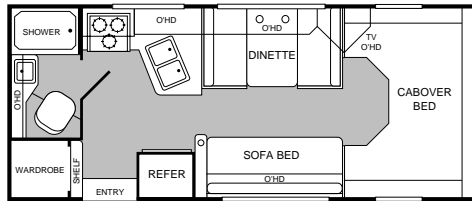
Liquid Capacities (gallons)	GT MODELS								
	22C	23B	24D	26F	29L	29V	29H	31K	31W
Fresh Water/Tank	30	30	37	30	35	35	50	50	40
Grey Water Holding	30	30	30	32	32	32	43	43	43
Black Water Holding	25	30	30	32	32	32	47	47	40
Appliance LPG Tank WC <sup>5</sup>	14	14	14	14	14	14	14	14	14
Fuel Tank Ford	35	55	55	55	55	55	55	55	55
Fuel Tank Chevy	35	55	55	N/A	N/A	N/A	N/A	N/A	N/A

### Body Structure, Standard Equipment

Crowned Seamless Rubber Roof      Smooth Fiberglass Seamless Sidewalls      Basement Storage (26'-31' models)

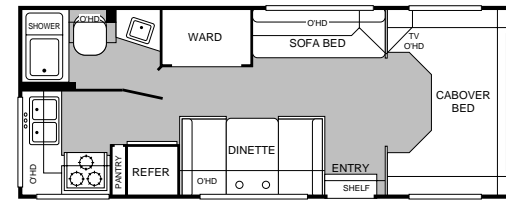
Body Structure, Options	GT MODELS								
	22C	23B	24D	26F	29L	29V	29H	31K	31W
Undercoating	Opt	Opt	Opt	Opt	Opt	Opt	Std	Std	Std

MODEL  
**22C**



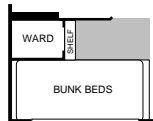
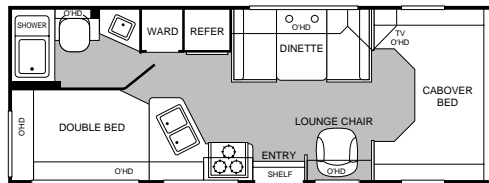
- Sofa bed and dinette
- Fully enclosed bathroom
- Double galley sink
- Large wardrobe
- Cabover bed

MODEL  
**23B**



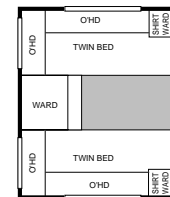
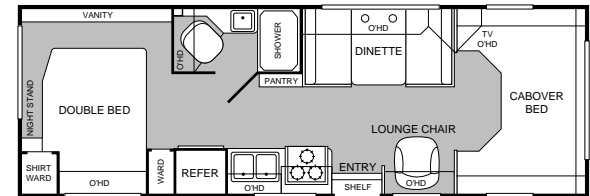
- Rear kitchen
- Fully enclosed bathroom
- Sofa bed and dinette
- Double galley sink
- Large wardrobe

MODEL  
**24D**



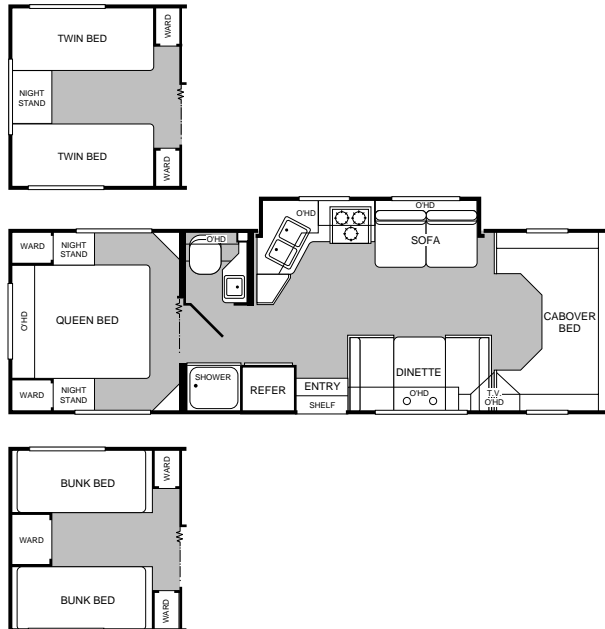
- Double bed
- Dinette
- Lounge chair
- Fully enclosed bathroom
- Opt'1 bunk beds

MODEL  
**26F**



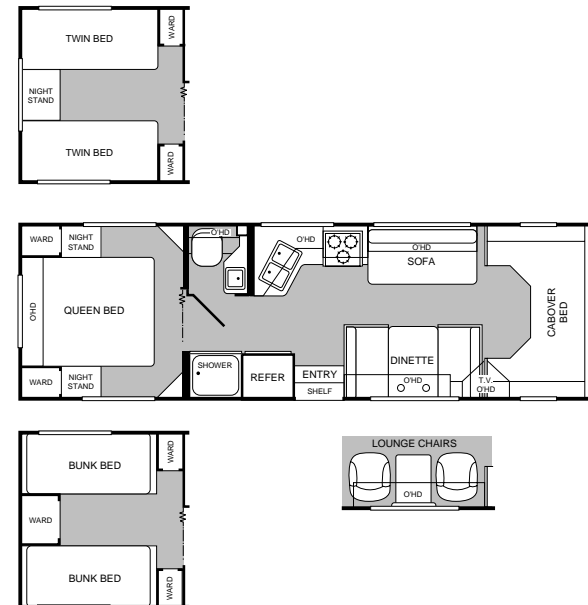
- Island double bed
- Lounge chair
- Dinette
- Fully enclosed bathroom
- Opt'1 twin beds

MODEL  
29L



- Galley slide-out
- Island queen bed
- Private toilet
- 3 bedroom configurations
- Double galley sink

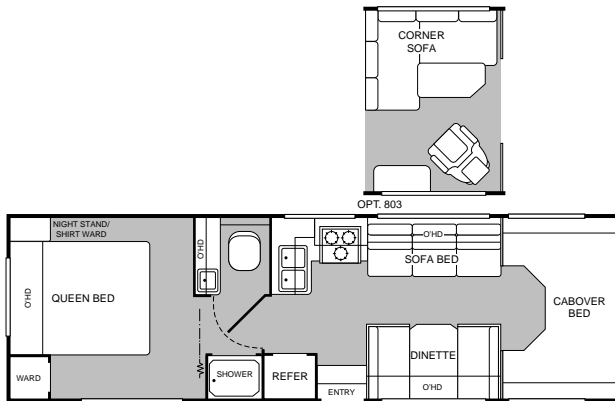
MODEL  
29V



- 3 bedroom configurations
- Dinette
- Private toilet
- Double galley sink
- Opt'l lounge chairs

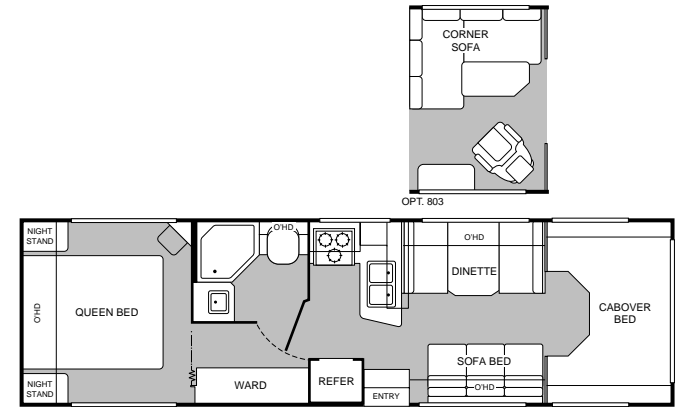
# G T M O D E L S

MODEL  
**29H**



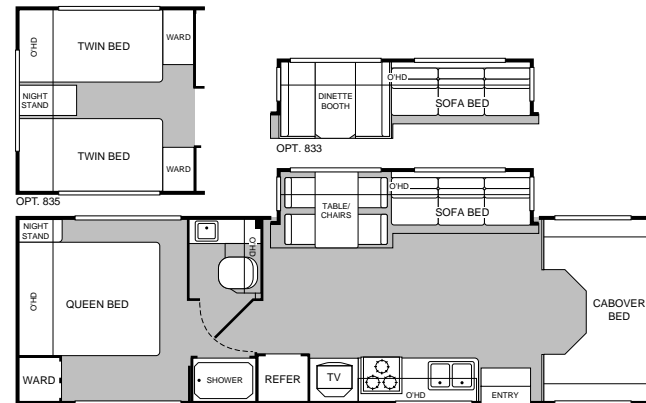
- Island queen bed
- Private toilet
- Dinette and sofa bed
- Double galley sink
- Opt'l corner sofa and lounge chair

MODEL  
**31K**



- Dinette and sofa bed
- Fully enclosed bathroom
- Island queen bed
- Double galley sink
- Opt'l corner sofa and lounge chair

MODEL  
**31W**

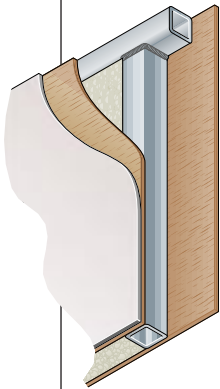


- Living room slide-out
- Island queen bed
- Private toilet
- Opt'l dinette and sofa bed
- Opt'l twin beds



# WHEN THE DUST SETTLES, THERE'S NOT AN RV IN THE WORLD THAT'S TESTED LIKE A FLEETWOOD RV.

If anyone loves to tear an RV apart, it's us. Because at Fleetwood RV nothing's more important than your safety and comfort. While our improvements aren't all visible to the eye, we commit millions of dollars a year in product development and research to build what we believe are the finest RVs in the world.



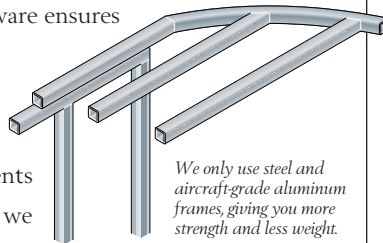
*Vacubond construction ensures that every roof, wall and floor is completely sealed.*

It all starts with advanced computer analysis of new prototype designs. Once built, the prototypes undergo rigorous load bearing and weight distribution stress tests. Stringent load analysis software ensures improved reliability.

Then the relentless testing and re-testing of components begins. In a couple of weeks we can simulate years of real world

use. Slide-out mechanisms have to open and shut thousands of times without a complaint. Seat belts must withstand more than three-ton stress levels without a whimper. And doors have to endure tens of thousands of slammings without losing their composure.

At the end of the day, we've thrown just about anything and everything we can at our units, just to make sure we have the best designed and most thoroughly tested RVs in the world. Then we back them with a limited 1-year/3-year warranty supported by Fleetwood RV dealers throughout the U.S. and Canada. So you have what we believe to be the best-handling, safest, most comfortable RV anywhere.



*We only use steel and aircraft-grade aluminum frames, giving you more strength and less weight.*

Dear Friend,

Here at Fleetwood RV, we have over 200 people working on research and development. But we get our best ideas when we hit the road in our recreational vehicles. Talking to people like you and noticing for ourselves little ways to make RVing more comfortable, more convenient and more fun.



If I had two pieces of free advice to give a friend in the market for an RV, the first would be to get a Fleetwood RV. Not because we need to sell one more. Heck, we sell more than anyone else. But because I know we build the best product out there for the money.

Second, really think about your dealer. He has to be someone you trust for advice, service and accessories. Only the best get to be Fleetwood RV dealers in the first place. Then we work with them to continually improve customer satisfaction. That's why 9 out of 10 owners would recommend their Fleetwood RV to a friend and 9 out of 10 of them would also recommend their Fleetwood RV dealer.

I hope that helps. And I also hope I see you out there, somewhere in this beautiful world, enjoying your new Fleetwood RV while I'm out there doing the same.

John C. Crean

Chairman Emeritus and Founder  
Fleetwood Enterprises, Inc.

*Your local Fleetwood RV dealer is:*

*If your local dealer is not indicated, write to the address below, or call us toll free 24 hours a day at 1-800-444-4905. Or visit our Website at <http://www.fleetwood.com>*

**FLEETWOOD RV**  
America's Favorite Recreational Vehicles

Fleetwood Enterprises, Inc.  
P.O. Box 2875, Van Nuys, CA 91404-2875

Product information and photography included in this brochure were as accurate as possible at the time of publication. Subsequent refinements may be evident in the actual product. Prices and specifications are subject to change without notice. All fuel and liquid capacities are approximate and dimensions are nominal. Fleetwood has designed its motor home brands to provide a variety of potential uses for its customers. Each unit features the optimum storage, fluid, seating and sleeping capabilities. Though the customer enjoys this potential, he/she also has the responsibility to select the proper combinations of loads without exceeding the chassis weight capacities.