

2 0 0 1

Endeavor[®]

G A S

EXPANDING THE LIMITS OF LUXURY LIVING.



BELOW — Step into Endeavor and be surrounded by sheer luxury. Like padded nylon carpeting down below and soft-touch padded vinyl ceiling up above. Plus cultured marble countertops with integrated sink and ceramic tile floor.

(Shown: 35PBD with Rosewood decor.)

Martha Stewart fabrics



Rosewood



Toffee

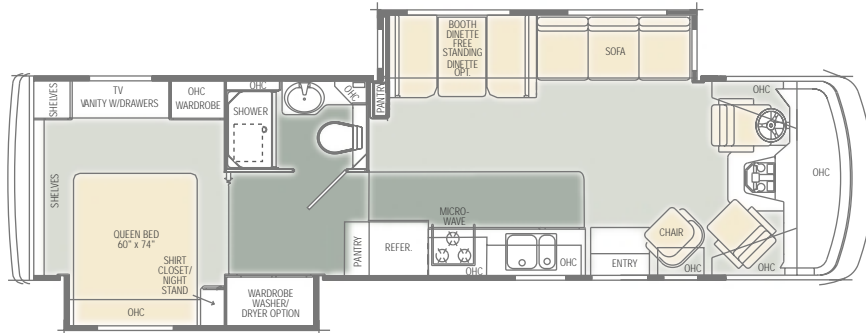
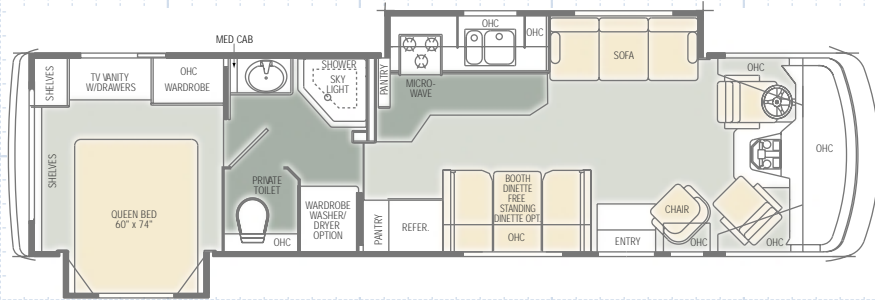


Nordic Blue

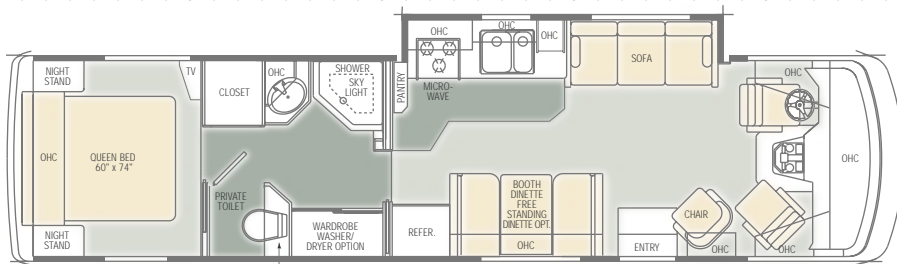
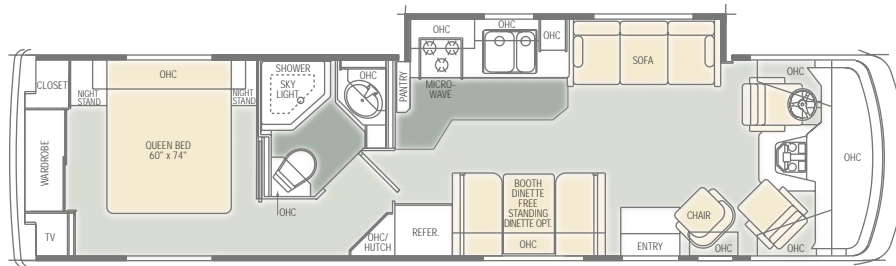
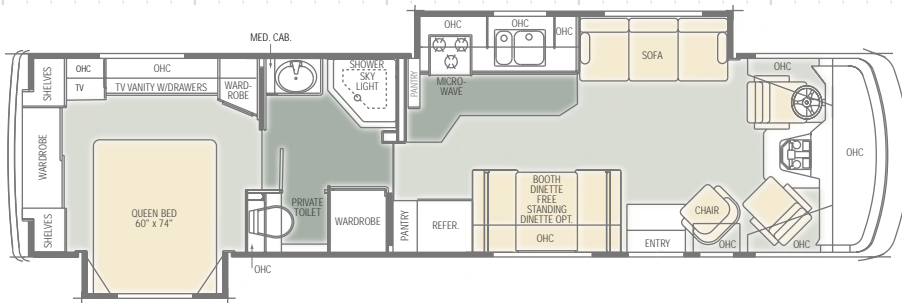
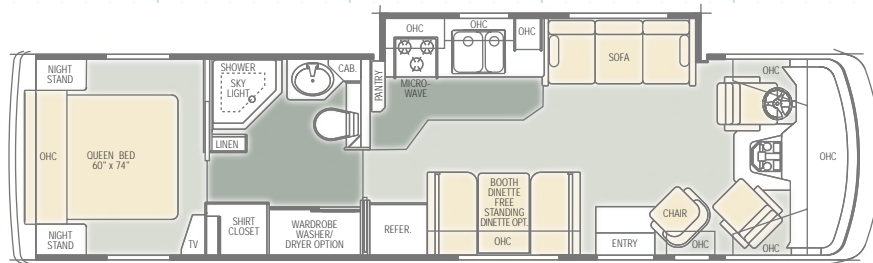


Silver Pine

2001 ENDEAVOR® Floor Plans



CARPET
 TILE/
 LAMINATE



BODY CONSTRUCTION

Standard Features

Alumaframe® Superstructure with Five-Year Limited Warranty
 Steel Cage Cockpit Construction
 Peaked Aluminum Roof with Fiberglass Insulation
 Smooth Gel Coat Fiberglass Exterior Walls
 Front and Rear Molded Fiberglass Caps
 Soft Touch Padded Vinyl Ceiling
 Steel Framed Floor on Steel Trusses
 Exterior Assist Handle
 Retractable Underhood Utility Light
 Mud Flaps
 Interior Paneling with 3/4-inch Bead Foam
 5/8-inch Sturdi-Wood Laminated Flooring
 Underbelly with Block Foam Insulation
 One-Piece Polyethylene Lined Storage Compartment
 Exterior Storage Compartment Doors with Integrated Single Handle Latches
 Fiberglass Front and Rear Bumpers
 Rear Ladder
 Undercoating

COCKPIT

Standard Features

CD Player/Radio with Four Speakers
 12V and 110V Outlet in Cockpit Area
 Fiberglass Automotive Dash
 Multi-Position Sunvisors
 Pilot and Co-Pilot Map Lights
 Intermittent Windshield Wipers
 Power Steering/Cruise Control
 Tilt Steering Wheel
 Electric Automotive Horn
 Color Coordinated Carpeted Floor Mats
 Leather-Faced Pilot and Co-Pilot Recliner Seats with 6-Way Power Pilot Seat
 Power Controlled Heated Exterior Mirrors
 Rear Vision System
 CB Prep
Options
 AM/FM Cassette (deletes CD)
 Driver's Door
 Computer Laptop Workstation
 Six-Way Power Co-Pilot Seat

APPLIANCES AND ACCESSORIES

Standard Features

Flush Mounted Bi-Fold Range Cover
 Large Double-Door Refrigerator with Raised Panel Doors
 17-inch High Output Three-Burner Range/Oven
 Range Hood with 12V Fan (35SBD Only)
 Microwave with Touch Control (35SBD Only)

APPLIANCES AND ACCESSORIES (cont.)

Standard Features

Space Saver Microwave with Touch Control and Range Hood (N/A: 35SBD)
 Systems Monitor Panel
 TV Antenna and Booster with 12V Recept and TV Jack(s)
 20-inch Stereo Color TV with Remote Control in Living Area
 13-inch Color TV with Remote Control in Bedroom
 VCR with Video Switching Box
 Cable TV Hook-Up and Telephone Jacks

Options

High Output Three-Burner Cook Top with Drawer (No Oven)
 Large Double-Door Refrigerator with Ice Maker and Raised Panel Doors (Model 982IM)

Four-Door Refrigerator with Ice Maker and Raised Panel Doors (35PBD, 35SBD, 36PBD)

Digital Satellite System-Pre-Wire
 Convection Microwave with Touch Control (35SBD Only)
 Space Saver Convection Microwave with Touch Control (N/A: 35SBD)
 Washer/Dryer Prep with 10 Gal. Gas/Electric Water Heater - Requires 50 amp Service (N/A: 35SBD, 36PBD, 36SGS)
 Vented Combination Washer/Dryer (Requires Washer/Dryer Prep and 50 amp Service) (N/A: 35SBD, 36PBD, 36SGS)



INTERIOR

Standard Features

Western Oak Cabinets
 Solid Wood Raised Panel Cabinet Doors with Face Mount Hinges
 Front Overhead Cabinet Doors with Screens
 Telestrut Overhead Storage Doors and Positive Catches on All Other Doors
 Low Friction Roller Drawer Guides
 Easy-Bed Sleeper Sofa with Drawer (Driver's Side) (N/A: 35SBD)
 Hide-A-Bed Sofa (35SBD Only)
 Wood Drink Tray on Co-Pilot Side (Between Co-Pilot Seat and Barrel Chair)
Cultured Marble Kitchen Countertop with Sinks and Covers
 Cultured Marble Lav Top with Integrated Sink
 8-inch Ceramic Tile Floor in Bathroom and Kitchen (N/A: 36PBD)

INTERIOR (cont.)

Standard Features

Laminate Flooring in Kitchen and Linoleum in Bathroom (36PBD Only)
 Raised Panels in Refrigerator Door
 Pleated Day/Night Shades in Living Room and Bedroom
 Mini Blinds and Valances in Kitchen and Bathroom
 Pantry
 Full Length Dressing Mirror
 Medicine Cabinet
 Bathroom Mirror
 Towel Bar in Bathroom
 Queen Bed Head-To-Rear with Bedspread and Headboard (35WGS, 36WGS)
 Queen Bed Head-To-Side with Bedspread and Headboard (N/A: 35WGS, 36WGS)
 Swivel Barrel Chair
 Booth Dinette with Drawers
 Nylon Carpeting and Pad in Living Area and Bedroom

Options

Wood Choice: Regal Cherry and Walnut Cabinets
 Martha Stewart Package
 Free-Standing Dinette Table with Two Free-Standing Chairs
 Two Folding Wood Dinette Chairs
 Leather-Faced Sleeper Sofa (Magic Bed) (N/A: 35SBD)
 Fabric Magic Bed Sofa (N/A: 35SBD)
 Leather-Faced Swivel Recliner Chair
 Fabric Recliner Chair

ELECTRICAL SYSTEMS AND LIGHTS

Standard Features

55 amp Electronic Power Converter
 30 amp 120V Distribution Panel and Cord (Automatic Energy Select Switch Only if 2nd Air Conditioner is Opt.)



Onan® 5.5 KW Generator
 Two 6V Deep Cycle Batteries
 Battery Disconnect Switches
 Decorative Dinette Light
 Cosmetic Light in Bathroom
 Decorative Wall Lights in Bedroom and Living Area
 12V Incandescent Lights in Ceiling
 16-inch Fluorescent Lights in Ceiling



ELECTRICAL SYSTEMS AND LIGHTS (cont.)

Standard Features

Lighted Outside Storage Compartments
Porch Light
Patio Receptacle

Options

Energy Management System with
50 amp Service
50 amp 120V Distribution Panel and Cord

HEATING, VENTS AND AIR CONDITIONING

Standard Features

Electronic Controlled Dash Heating and
Air Conditioner with Ducted Air and
Wall Thermostat
13.5M BTU and 11.0M BTU Roof Air
Conditioners with Ducted Air and Wall
Thermostat
35M BTU Electronic Ignition Furnace with
Ducted Heating System
Wet Bay with 12V Heater
In-Floor Ducted Heating System
12V Roof Vent in Bathroom

Options

Cold Weather Package

HEATING, VENTS AND AIR CONDITIONING (cont.)

Options

Two 13.5M BTU Roof Air Conditioners with
Ducted Air and Wall Thermostat
12V Attic Fan
Heat Pump (one per A/C)

PLUMBING AND LP SYSTEMS

Standard Features

Demand Water System and Water Pump
6 Gallon Gas/Electric Water Heater with
Electronic Ignition
Water Heater By-Pass Valve
China Toilet with Sprayer
Gravity or Pressurized Water Fill
No-Fuss Flush Holding Tank Rinsing System
One-Piece Fiberglass Shower
Glass Shower Door
Insulated Systems Compartment with Easy
Access to Hook-Ups

Options

Neo Angled Bath Tub (N/A: 35SBD)
10 Gallon Gas/Electric Water Heater (DSI)
(N/A: 36SGS)
Water Purifier in Kitchen

WINDOWS, DOORS AND AWNINGS

Standard Features

Radius Entrance Door with Screen Door
Tinted Skylight in Bathroom
Radius Slider Tinted Dual Pane Windows
Slide-Out Awning

Options

Rear Window (35WGS, 36WGS)
Window Awning(s) (Single Awning on
Double Slide-Out)
Color Coordinated Acrylic Patio Awning
with Metal Cover
Automatic Patio Awning

SAFETY

Standard Features

Fire Extinguisher
Deadbolt Lock on Entrance Door
120V GFI Protected Circuit
(Kitchen, Bathroom, Exterior)
LP Gas Detector
Smoke Detector
Carbon Monoxide Detector
Driver and Passenger Three-Point Seat Belts
(Lap and Shoulder)
Third Brake Safety Light
Egress Window(s)

FORD CHASSIS/ENGINE/SUSPENSION

Standard Features

Electronic Fuel Injection Gasoline Engine: 6.8L V10
Cubic Inch Displacement: 415
Automatic Transmission with Overdrive: 4-Speed
Fuel Tank Capacity: 75 Gal.
Alternator: 130 amps
Rear Axle Ratio: 5.38:1
Front Leaf Spring Suspension

Rear Leaf Spring Suspension

Stainless Steel Wheel Liners
Spare Tire and Wheel (N/A: 36PBD)
Radial Tires
Tire Size: 245/70RX19.5F
5,000 Lb. Hitch Receiver with Six-Point Connector

Options

HWH Manual Hydraulic Leveling Jacks (4 PT.)

Due to the large variety of options and floor plan arrangements available to our customers, actual weights for each unit can differ significantly. Holiday Rambler provides a weight sticker on each unit we produce which includes that unit's tank capacities and approximate weight. Consult your local Holiday Rambler dealer for unit availability and further information.

The information printed in this brochure reflects product design, fabrication, and component parts at the date of printing. The manufacturer reserves the right, at any time, to make changes in product design or material or component specifications as its sole option, without notice. This includes the substitution of components of a different brand or trade name which will result in comparable performance. All information printed in this brochure is subject to change after the date of printing. Some features shown or mentioned in this brochure are optional and may only be available in selected floor plans. Photographs may show props or decorations that are not standard equipment on Holiday Rambler models.

Holiday Rambler, the HR logo and its design, are registered trademarks. All other products and company names are trademarks and/or registered trademarks of their respective holders.

While the color of the motor home's exterior and the interior fabrics depicted in this sales brochure are fair and reasonable depictions, the colors depicted may not be an exact match of the actual colors because of the variances in photo-processing and variances caused by inserting the photographs within the sales brochure. Due to product improvements, changes during the model year and/or transcription errors that may occur, information represented within this brochure may not be accurate at the time of your purchase. If certain information is significant to your purchasing decision, please confirm the information with your dealer prior to submitting your order.

WEIGHTS

	35PBD	35SBD	35WGS	36PBD	36SGS	36WGS
Gross Vehicle Weight Rating (Lbs.)	20,500	20,500	20,500	20,500	20,500	20,500
Gross Combined Weight Rating (Lbs.)	25,500	25,500	25,500	25,500	25,500	25,500
Front Gross Axle Weight Rating (Lbs.)	7,000	7,000	7,000	7,000	7,000	7,000
Rear Gross Axle Weight Rating (Lbs.)	13,500	13,500	13,500	13,500	13,500	13,500

MEASUREMENTS

	228"	228"	228"	228"	228"	228"
Wheelbase	228"	228"	228"	228"	228"	228"
Overall Length	35' 11"	35' 11"	35' 11"	36' 10"	36' 10"	36' 10"
Overall Height (Including A/C)	11' 9"	11' 9"	11' 9"	11' 9"	11' 9"	11' 9"
Interior Height	6' 6"	6' 6"	6' 6"	6' 6"	6' 6"	6' 6"
Interior Width	94.5"	94.5"	94.5"	94.5"	94.5"	94.5"
Exterior Width	100"	100"	100"	100"	100"	100"

TANK CAPACITIES

All Tank Capacities are Approximate. Actual "Usable Capacity" May Vary as a Result of Variances in Installation and Fabrication of the Tanks.

	6	6	6	6	6	6
Water Heater (Gal.)	6	6	6	6	6	6
Gray Tank (Gal.)	45	45	45	45	45	45
Black Tank (Gal.)	45	45	45	45	45	45
Fresh Tank (Gal.)	67	67	67	55	70	70
LP Tank (Gal.)*	32.9	32.9	32.9	32.9	32.9	32.9

* Actual Filled LP Capacity is 80% of Listing Due to Safety Shut Off Required on Tank.

