



Meet the new Fleetwood generation.

NAME: The Meyers, Carvers, and Browns

AGES: Age is a state of mind

OCCUPATION: Who wants to think about work. We're on vacation!

OUTLOOK ON LIFE: *"Explore. Plan a trip to someplace you've never been. Share an experience that will challenge you. Do something you've never done before but always wanted to. There are so many special places in this country, from stunning canyons to calming waterways, places that will touch you and change you. It just takes a lot of desire and a little planning to make it happen. And when you've floated that last stretch of river and settled down around the campfire, remember to share how you've changed. Because change is good for the soul."*

MOTTO: *"Keep your sense of adventure and a smile on your face."*

MOTOR HOME: Fleetwood SOUTHWIND®

Meet the new Fleetwood SOUTHWIND®.

NAME: SOUTHWIND®

PURPOSE: Style and functionality to complement your active lifestyle

SPECIFICATIONS: 4 exciting, new floor plans - 32' to 37' models available •

- New contemporary, aerodynamic front and rear cap styling
- Power entry step
- Power Platform
- 30-amp electrical service
- 10-gallon gas/electric water heater
- 5.5kW Onan® Gold generator
- Tuff-Coat™ high-gloss fiberglass exterior
- Royal Tuff-Ply™ roof

STANDARD FEATURES: Flush floor slide-out rooms • Rack and pinion slide-out system •

- New aluminum skin luggage door system
- Quality Flexsteel® furnishings
- 27" Panasonic® TV in front and 20" TV in bedroom
- Name brand appliances
- Solid surface countertops
- Stainless steel sink
- Dual reclining captain's chairs
- New ergonomic dash board
- Cruise control
- Plus many quality safety features

MOTTO: "SOUTHWIND®—Set sail on a luxurious new course."



FLEETWOOD.RV

The World's #1 RV Manufacturer

2002 Southwind Features



Our engineering may set us apart from the rest, but the things you'll notice most when you and your family take a trip, are the top-of-the-line features. Here are but a few of the items that make life on the road with Southwind memorable.



Surround yourself in sound with the optional Panasonic® DVD system. Features six speakers throughout the living room and galley.



The standard monitor panel, battery volt meter, and electronic climate control system, with dual A/C controls, provides a separate climate in the front and rear of the coach. (Available on 33' models and larger)



Restyled aerodynamic front end cap features bold new halogen headlamps.



Add the optional washer-dryer. Quiet and convenient, you'll appreciate having the ability to do a quick load of laundry on extended travels.



Fill Southwind up on either side of the pump with a rear fuel-fill location, especially convenient when towing a vehicle.

The durable rotocast storage compartments are sturdy and easy to clean—pop out the drain cap and they can be hosed out.

A drip rail molding on both sides of the coach guides roof water run-off to the front and rear, away from openings and sidewalls.

Anti-wicking process, on all of Southwind's openings and windows, includes multiple seals for prevention of leaks and moisture buildup.

Our swing-down engine access door makes it easy to check Southwind's fluid levels and electrical panel.



Hookups are easily accessed and color coded for quick set-up. Southwind's 5.5kW ultra-quiet Onan® Gold generator (standard on 33R, 34D, 36S and 36U) offers dependable 110V electrical power at a moment's notice regardless of location or the task at hand.

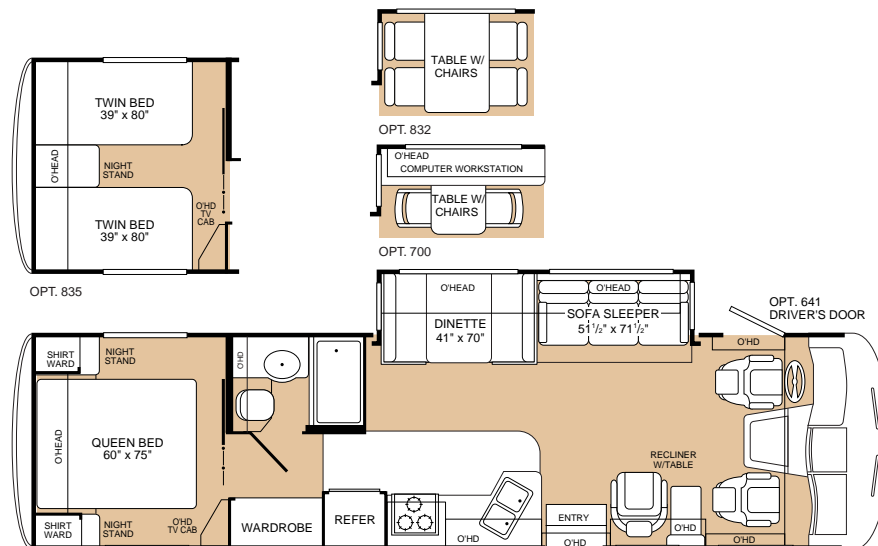


Open the smooth, one-piece aluminum skin storage doors and take advantage of over 35-cubic feet of storage space.

2002 Southwind Floor Plans

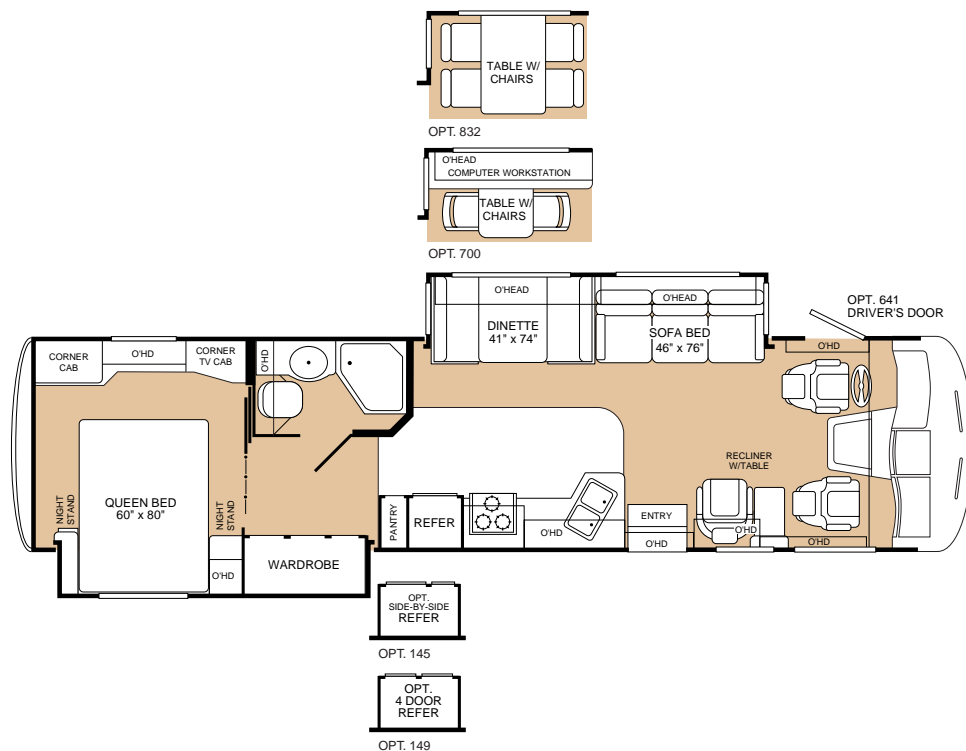
Model 32V

- Optional Driver's Door
- Living Room Slide-Out with Sofa Sleeper
- Dinette or Optional Table with Chairs or Computer Workstation
- Recliner Chair with Table
- Island Queen Bed or Optional Twin Beds
- Fully Enclosed Bathroom



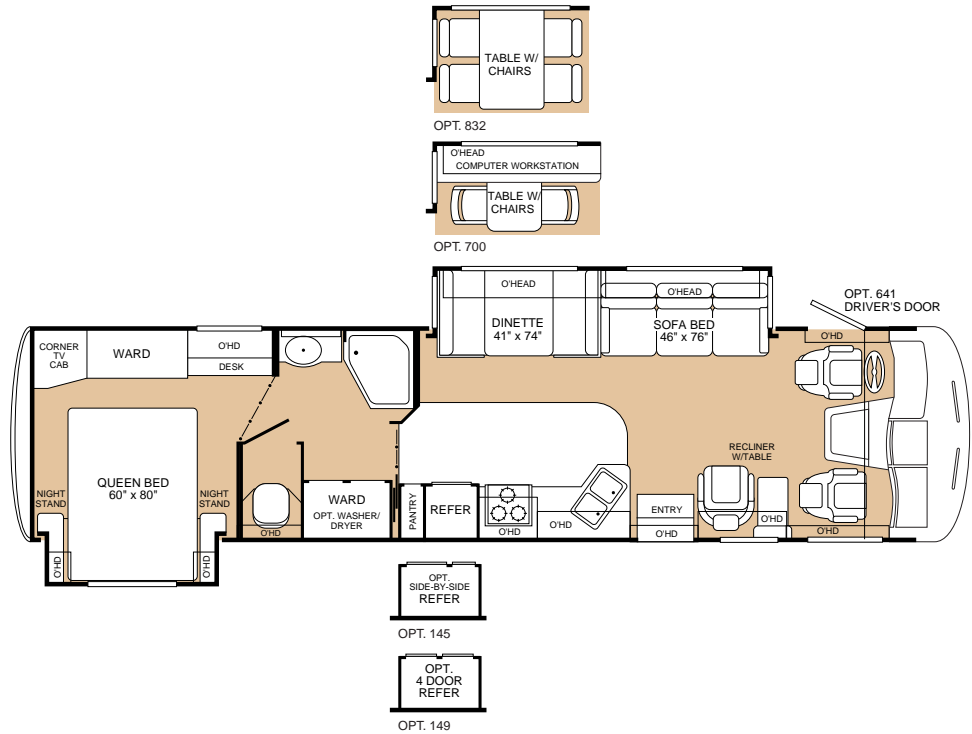
Model 35R

- Optional Driver's Door
- Living Room Slide-Out with Sofa Bed
- Dinette or Optional Table with Chairs or Computer Workstation
- Recliner Chair with Table
- Optional Side-By-Side or 4-Door Refrigerator
- Bedroom/Wardrobe Slide-Out with Island Queen Bed
- Fully Enclosed Bathroom



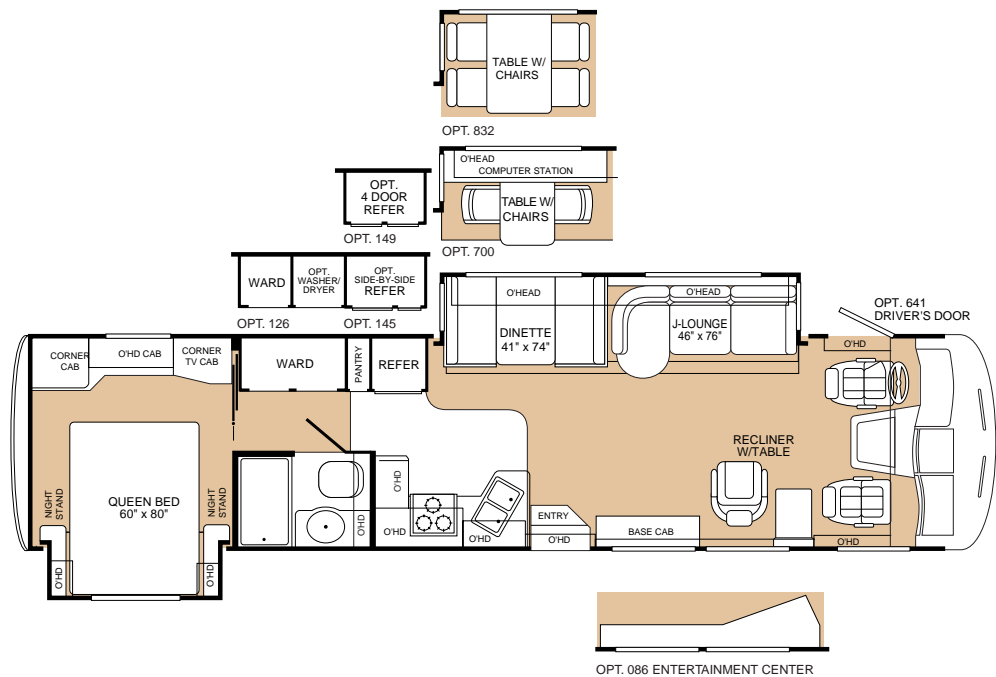
Model 36T

- Optional Driver's Door
- Living Room Slide-Out with Sofa Bed
- Dinette or Optional Table with Chairs or Computer Workstation
- Recliner Chair with Table
- Optional Side-By-Side or 4-Door Refrigerator
- Optional Washer/Dryer
- Bedroom Slide-Out with Island Queen Bed



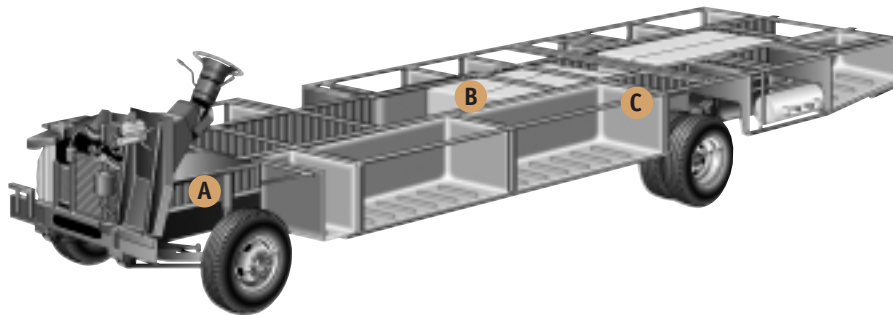
Model 37U

- Optional Driver's Door
- Living Room Slide-Out with J-Lounge Sofa
- Dinette or Optional Table with Chairs or Computer Workstation
- Recliner Chair with Table
- Optional Entertainment Center
- Optional Side-By-Side or 4-Door Refrigerator
- Optional Washer/Dryer
- Fully Enclosed Bathroom with Large Shower
- Bedroom Slide-Out with Island Queen Bed



The Power Platform Makes the Difference

Southwind's quality begins long before the features come on board. We begin by building on our exclusive Power Platform, with Paco® Beam, a unique truss design welded together using tubular steel that's durable, strong, and dependable. The result is a quiet and nearly flawless ride, strong floor and plenty of storage space below. An all-steel foundation further reduces stress loads on the sidewalls and minimizes chassis flex on uneven roads.



A Steel I-beams are welded the length of the chassis for enormous weight-bearing ability.

B Water tanks run horizontally down the center of the frame for balance.

C Beefy steel outriggers firmly cradle all exterior compartments.

2002 Options



Appliances	32V	35R	36T	37U
Multiple CD Changer	OPT	OPT	OPT	OPT
12-cu. ft. Side-by-Side Dometic® Refrigerator w/Ice Maker	N/A	OPT	OPT	OPT
Norcold® 4-Door Refrigerator w/Ice Maker	N/A	OPT	OPT	OPT
8-cu. ft. Dometic® Double Door Refrigerator w/Ice Maker	N/A	OPT	OPT	OPT
Sharp® Convection Microwave	OPT	OPT	OPT	OPT
Sharp® CSA Convection Microwave	OPT	OPT	OPT	OPT
Washer/Dryer	N/A	N/A	OPT	OPT
DSS Manual Lift/Satellite Dish	OPT	OPT	OPT	OPT
Electrical				
CSA Package	OPT	OPT	OPT	OPT
Exterior				
Awning—USA	OPT	OPT	OPT	OPT
Awning—One Touch—USA	OPT	OPT	OPT	OPT
Exterior Automotive				
Ford® Chassis 6.8L Triton™ V10 Engine	OPT	OPT	OPT	OPT
Workhorse® Chassis 8.1L Vortec Engine	OPT	OPT	OPT	OPT
Interior				
Folding Shower Door	STD	N/A	N/A	STD
Glass Shower Door with Chrome Frame	N/A	STD	STD	N/A
Dinette Table w/Free-Standing Chairs	OPT	OPT	OPT	OPT
Dinette/Computer Workstation	OPT	OPT	OPT	OPT
Entertainment Center (Includes 27" Panasonic® TV with a DVD Home Theater System)	N/A	N/A	N/A	OPT
Interior Automotive				
CB Radio Ready	OPT	OPT	OPT	OPT
Stereo AM/FM with CD player	OPT	OPT	OPT	OPT
Driver's Door with Manual Crank Window Lift	OPT	OPT	OPT	OPT
Driver/Passenger Ultraleather™ Seats with Power Driver	OPT	OPT	OPT	OPT

N/A: Some options not available on all models. See your dealer for complete information.

IMPORTANT — PLEASE READ: Product information, photography and illustrations included in this publication were as accurate as possible at the time of printing. For further product information and changes, please visit our website at www.fleetwoodrv.com or contact your local Fleetwood dealer. Prices, materials, design and specifications are subject to change without notice. All weights, fuel, liquid capacities and dimensions are approximate. Fleetwood has designed its recreational vehicles to provide a variety of uses for its customers. Each vehicle features optimal seating, sleeping, storage and fluid capacities. The user is responsible for selecting the proper combination of loads (i.e. occupants, equipment, fluids, cargo, etc.) to ensure that the vehicle's capacities are not exceeded.

2002 Specifications



Ford® Chassis	32V	35R	36T	37U
Wheelbase	208"	228"	228"	228"
GVWR (lbs) (1)	20,500	20,500	20,500	22,000
Front GAWR (lbs) (2)	7,000	7,000	7,000	7,500
Rear GAWR (lbs) (2)	13,500	13,500	13,500	14,500
Base Weight (lbs) (3)	15,550	16,750	16,980	17,100
GCWR (lbs) (4)	25,500	25,500	25,500	26,000
Hitch Rating Weight (lbs)*	5,000	5,000	5,000	5,000
Tongue Weight (lbs)*	500	500	500	500
Fuel Capacity (gal)	75	75	75	75
Workhorse® Chassis				
Wheelbase	208"	228"	228"	228"
GVWR (lbs) (1)	20,700	20,700	20,700	22,000
Front GAWR (lbs) (2)	7,500	7,500	7,500	8,000
Rear GAWR (lbs) (2)	13,500	14,500	14,500	14,500
Base Weight (lbs) (3)	15,400	17,200	17,350	17,550
GCWR (lbs) (4)	25,700	25,700	25,700	26,000
Hitch Rating Weight (lbs)*	5,000	5,000	5,000	5,000
Tongue Weight (lbs)*	500	500	500	500
Fuel Capacity (gal)	75	75	75	75
Dimensions and Capacities				
Overall Length (5)	32' 10"	35' 10"	36' 10"	37' 4"
Overall Height (with A/C) (8)	11' 11"	11' 11"	11' 11"	11' 11"
Overall Width (maximum) (6)	102"	102"	102"	102"
Interior Height (maximum)	79"	79"	79"	79"
Interior Width (maximum)	96"	96"	96"	96"
Fresh Water Holding Tank (gal)	100	100	100	100
Grey Water Holding Tank (gal)	58	58	58	58
Black Water Holding Tank (gal)	42	42	47	42
Appliance LPG Tank (gal) (WC) (7)	25	25	25	25
Water Heater Tank (gal)	10	10	10	10
Liquid Weight Reference	Water (gal) = (8.3 lbs/3.8 kgs)	Fuel (gal) = (6.1 lbs/2.8 kgs)	LPG (gal) = (4.5 lbs/2.0 kgs)	
Metric Conversion	Multiply pounds x 0.453 to obtain kilograms		Multiply gallons x 3.785 to obtain liters	

1. GVWR (Gross Vehicle Weight Rating): Means the maximum permissible loaded weight of the motor home. The GVWR is equal to or greater than the sum of the unloaded vehicle weight plus the net carrying capacity.
2. GAWR (Gross Axle Weight Rating): Means the maximum permissible loaded weight a specific axle is designed to carry.
3. Base Weight: Means the weight of the motor home without fuel, options, water, cargo or passengers.
4. GCWR (Gross Combined Weight Rating): Means the value specified by the motor home manufacturer as the maximum allowable loaded weight of this motor home with its towed vehicle. Towing and braking capacities may differ. Refer to Fleetwood and chassis manufacturer manuals for complete information.

5. Overall length measured from forward most body point or bumper to rear most body point or rear bumper. Add 6" for rear ladder.
6. Excludes safety equipment and awnings.
7. Tank Manufacturer's listed water capacity (WC). Actual LPG capacity is 80% of water listing as required by the safety code.
8. Add 4" for Workhorse® chassis.

* The chassis manufacturer recommends the installation of a supplemental brake control system to activate the brakes on the vehicle or trailer you are towing.

2002 Standard Features

FLEETWOOD® RV

Appliances

- Front 27" Panasonic® TV In Overhead
- Smoke Detector/Alarm
- LPG Leak Detector/Alarm
- CO Detector/Alarm
- 10-Gallon, Quick-Recovery Water Heater with D.S.I. (Gas/Electric)
- 22" 3-Sealed Burner, High-Output Cooktop with Oven
- Light/Power Range Hood
- Folding Range Cover—Flush Mount Solid Surface Top
- 1-cu. ft. Sharp® Microwave
- Furnace 34,000 BTU
- Dual Roof A/C High Efficiency with Solar Panel on Front A/C
- Water Heater Bypass System
- Porcelain Toilet with Water Saver
- Toilet Tank San-T-Flush™ System
- 8-cu. ft. Dometic® Double-Door Refrigerator
- Single-Lever Galley Faucet
- Water Filter with Faucet
- Demand Water Pump with Filter
- Power Bath Vent
- Hi-Fi VCR
- Rear Bedroom 20" Panasonic® TV
- TV Antenna
- Fan-Tastic® Power Roof Vent
- Fire Extinguisher
- Telephone Jack in Dash and Bedroom
- Rear Speakers in Bedroom

Body Structure

- Vacubond Upper/Lower Floors
- Vacubond Walls with Smooth, High-Gloss Exterior Fiberglass
- Aluminum Wall/Ceiling Framing
- Interlocking Aluminum Extrusions
- Radius Roof with Ducted A/C—Flat Interior Ceiling
- Royal Tuff-Ply™ Roof

Electrical

- Dual Patio Receptacles
- 120V/12V AC/DC Converter Central Electrical Panel
- 120V/12V Wire Raceways
- 3-Way Water Pump Switch
- 5.5kW Generator
- 30-amp Service
- Wall Switches
- Electronic Climate Control
- Dual 6V/Deep-Cycle 218-amp House Batteries

Exterior

- Fiberglass Front/Rear Cap
- Swing-Down Engine Access Door
- Fiberglass Front Quarter Panels
- Fiberglass Rear Wheel Well Trims
- Aerodynamic Styling

Exterior (cont.)

- Entry Door with Deadbolt Latch
- Slider Windows in Living Room
- Stainless Steel Mesh Front Grille
- Utility Compartment with Exterior Shower
- 4-Point Manual Hydraulic Leveler System
- Roof Ladder
- Exterior Assist Handle
- Heated Remote Rear View Mirrors
- Park Cable Receptacle
- Awning Rail/Drip Molding (Both Sides)
- Power Entry Step
- Porch Light
- 3 Colorway Graphics to Match Decor
- Lower Body Accent Paint

Exterior Automotive

- Large, Curved Aerodynamic Windshield
- Undercoating
- Stainless Steel Wheel Simulators
- Mud Flaps
- Underhood Utility Lights
- Steel Surface on Bulkhead
- Trailer Hitch with 7-Point Electrical Hook-Up*
- Halogen Headlights
- Fog Lights
- Rear Vision Camera with One-Way Sound
- Single Motor Windshield Wipers with Wet Arm

Exterior Storage

- Insulated Luggage Doors/Aluminum Skin
- Single Paddle/Latches
- Continuous One-Piece Bulb Seal
- Gas Lift Strut Supports
- Lighted Compartments
- Steel Sealed Frames

Interior

- 3 Interior Decors
- Woven Jacquard Feature Fabrics
- Skylight in Tub/Shower
- Cherry Wood Grain or Maple Wood Grain
- Wall-to-Wall Nylon Carpet with Carpet Pad
- Vinyl Floor Covering—Bath
- Wood Drawers
- Roller Guide Drawer Slides with Transit Ship Locks
- Radius Corner Cabinetry
- Brushed Chrome Finish Cabinet Hardware
- Driver/Passenger Reclining Bucket Seats
- 3-Point Front Seat Belts
- Vinyl Pull Shade—Entry
- Bedspread with Decor Pillows
- Restonic® Deluxe Pillow Top Innerspring Mattress
- Cherry or Maple Finish Cabinet Doors & Drawers
- Corian® Galley Countertops
- Lounge Recliner

Interior (cont.)

- Headboard
- Beveled Mirrors
- Slide-Out Dinette Bins with Latches
- Cedar Lining in Wardrobe
- Day/Night Shades (Living Area)
- Pleated Shades (Bedroom Area)
- Cherry or Maple Finish Wood Trim Table Tops
- Trash Basket in Galley
- Molded Tub/Shower Acrylic with One-Piece Enclosure
- Chrome Bath Accessories
- Residential Seat Styling
- Interior Egress Assist Rail (Wood & Chrome)
- Adjustable Cabinet Shelves (Selected Cabinets)
- TV Cabinet—Rear Bed
- Laminate Flooring in Galley
- Sink Cutting Board
- Solid Divider Doors
- Large, Double Stainless Steel Sink

Interior Automotive

- Intermittent Wiper Control
- Double-Swivel Sun Visors with Map Pockets
- Engine Cover Convenience Tray
- Cruise Control
- Low Profile Engine Cover
- Radio with Cassette AM/FM/MX—Electronic Tuning
- Tilt Steering Wheel
- Automotive Dash
- Computer Workstation in Dash
- Auxiliary Start Circuit
- Battery Disconnect System
- Auto A/C Heater Combo
- Radio Switch—Main/Auxiliary Power
- Driver/Passenger Captain's Chairs with Reclining Back/Slide Controls

Interior Lighting

- Wardrobe Lighting
- Fluorescent Ceiling with Dual Bulbs
- Decor Lighting
- Incandescent Lighting
- Wall Sconces
- Make-Up Lights in Bath

Platform Construction

- Power Platform
- Basement Floor Configuration
- Heated Water & Holding Tank Compartments
- Polyethylene Luggage Compartment Boxes
- Paco® Beam
- Steel Outriggers
- Coach Vibration Isolators

* The chassis manufacturer recommends the installation of a supplemental brake control system to activate the brakes on the vehicle or trailer you are towing.

Why would you buy anything else?

For every road you travel, Fleetwood has the RV to fit your high standards and lifestyle. We build the recreational vehicles America wants, accounting for nearly one out of every three RVs on the road today. How do we do it? We call it the **Fleetwood Equation**.

Size + Service + Quality = Value!

Size *The world's #1 RV manufacturer*

For over a half-century Fleetwood has grown to become the **largest manufacturer of recreational vehicles in the world**. And stands today as the only RV manufacturer in the **Fortune 500**. You won't find our nearest competitor in even the top 1,000. Fleetwood remains, year after year, the largest, most influential, innovative and recognized leader in the RV industry.

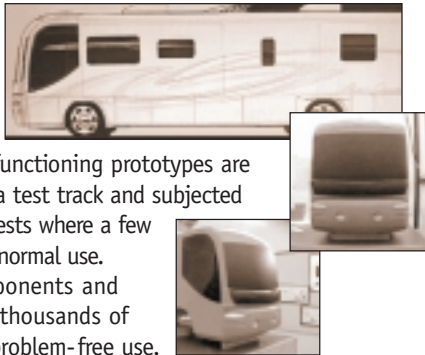
Service *Listening to our customers*

With over **1,100 service dealers in the US and Canada, Fleetwood has the largest network in the RV industry**. No other RV company comes close in equaling this vital customer support system. Fleetwood RV service dealers have instant, real-time electronic access to your service records as well as parts inventory and warranty repair authorization inquiries. We also provide a 24-hour customer call center for service and product information so no matter where you travel in North America, professional support and fast answers are always nearby. Call toll free 24 hours a day: **1-800-322-8216**.



Quality *Using only the best materials*

At Fleetwood, quality begins at the design stage so every coach is built right, right from the start. Subsequent to design approval, full-functioning prototypes are built, then punished on a test track and subjected to accelerated life cycle tests where a few weeks can equal years of normal use. At the same time, components and systems are test-cycled thousands of times assuring years of problem-free use.



Once approved for production, each unit is built by skilled technicians using quality materials and components, many of which are sourced through, or manufactured by, our subsidiary companies such as Gold Shield Fiberglass and Continental Lumber Products.



Fleetwood engineers specify the very best products and appliances from companies such as Coleman®, Dometic®, Flexsteel®, Ford®, Freightliner®, Magic Chef®, Panasonic®, and Workhorse®. Companies that are experts in their respective fields and play a significant role as partners, not just suppliers.

All this assures that every Fleetwood RV has the fit, finish and details required by our high standards—as well as yours.

Value *Priced right with style*

At Fleetwood RV, we look at value as the sum of everything we offer.

- **Value** is our design, engineering expertise, and innovative manufacturing methods.
- **Value** is structures and components that are the best in the industry, that meet or exceed government and industry safety standards.
- **Value** is Ownercare — a one-year/three-year warranty with coverage from a company that will be around in the future to service your needs. Ownercare is one of the RV industry's most comprehensive programs and includes systems and applications, construction, no deductible and no service charge. And it is fully transferable for the first 12 months. See your nearest Fleetwood dealer for a full explanation of benefits and restrictions.
- **Value** is customer satisfaction. When asked, more experienced RV owners would recommend Fleetwood to a friend than any other brand. Fleetwood RVs consistently hold their value better than most RVs at trade-in time.



Value is peace of mind.

SSQV—Size, Service, Quality, and Value. Together they equate to the very best RV you can buy, and the reason you should purchase a Fleetwood over any other brand.

Require these features when you purchase your next RV... Fleetwood does!

See you on the road!

Limited One-Year/Three-Year Warranty

For Motor Homes Manufactured by subsidiaries of Fleetwood Enterprises, Inc., sold in the United States and Canada

Coverage Provided

Your new motor home, including the structure, plumbing, heating, electrical systems, all appliances and equipment installed by the manufacturer, is warranted under normal use to be free from manufacturing defects in material or workmanship. Appearance imperfections or damage to paint, graphics, exterior materials, or upholstery that may have occurred prior to delivery are normally corrected during the inspection process at the manufacturing plant or at the dealership.

The warranty extends to the first retail purchaser and his transferee(s) and begins on the date of original retail delivery or the date the motor home is first placed into service as a rental, commercial or demonstrator unit (whichever occurs first). The warranty extends for the following periods:

1. For all defects (other than structural) the warranty extends for a period of one year from such date or until the unit has received 15,000 total miles of use as determined by the mileage shown on the odometer (whichever occurs first).
2. For structural defects, 3 years; structural defects are limited to the following: roof structure, sub-floor structure, exterior walls, interior walls and ceilings.

Written notice of defects must be given to the selling dealer or manufacturer not later than ten (10) days after the expiration of the warranty period.

Owner's Obligation

The owner is responsible for normal maintenance as described in the Owner's Information Package; however, minor adjustments (such as cabinet latches, TV antenna control, etc.) will be performed by the dealer during the first 90 days of warranty coverage. Thereafter, such adjustments are the responsibility of the owner as normal maintenance unless required as a direct result of repair or replacement of a defective part under this warranty.

If a problem occurs which the owner believes is covered by this warranty, the owner shall contact the selling dealer, or the Fleetwood Service Center, giving sufficient information to resolve the matter. The owner shall deliver the motor home to the dealer or the Fleetwood Service Center location for warranty service.

FLEETWOOD RV

The World's #1 RV Manufacturer

Fleetwood Enterprises, Inc. • RV Marketing • P.O. Box 7638 • Riverside, CA 92513-7638

Your local Fleetwood RV dealer is:

Dealer's Obligation

By agreement with the manufacturer, the dealer is obligated to maintain the motor home prior to retail sale, to perform a detailed predelivery inspection and to repair or replace any parts necessary to correct defects in material or workmanship.

When the Dealer Does Not Resolve the Problem

If the dealer is unable or unwilling to resolve a problem which the owner is convinced is covered by the warranty, the owner should contact the Fleetwood Service Center at the address listed below and provide the Fleetwood Service Center with a description in writing of the problem and attempts made to resolve it.

Manufacturer's Obligations

Upon receipt of notice of a claim, where the dealer was unable or unwilling to resolve the problem the Fleetwood Service Center will repair or replace any parts necessary to correct defects in material or workmanship or will take other appropriate action as may be required.

What is Not Covered By This Warranty

This warranty does not cover:

1. The automotive chassis system (including the chassis and drive train), tires and batteries, which are covered by the separate warranties of the respective manufacturers of these components.
2. Defects caused by or related to:
 - a. Abuse, misuse, negligence or accident;
 - b. Failure to comply with instructions contained in the Owner's Information Package;
 - c. Alteration or modification of the motor home;
 - d. Environmental conditions (salt, hail, chemicals in the atmosphere, etc.)
3. Normal deterioration due to wear or exposure, such as fading of fabrics or drapes, carpet wear, etc.
4. Normal maintenance and service items, such as light bulbs, fuses, wiper blades, lubricants, etc.
5. Motor homes on which the odometer reading has been altered.
6. Transportation to and from dealer or Fleetwood Service Center location, loss of time, inconvenience, commercial loss, loss of use, towing charges, bus fares, vehicle rental, incidental charges such as telephone calls, or hotel bills, or other incidental or consequential damages.

Some states do not allow the exclusion of limitation of incidental or consequential damages, so the above limitation exclusion may not apply to you.

This warranty gives you specific legal rights, and you may also have other rights, which vary from state to state.

The manufacturer is not responsible for any undertaking, representation or warranty made by any dealer or other person beyond those expressly set forth in this warranty.

www.fleetwoodrv.com

Visit our website to find a dealer near you or learn more about other Fleetwood products. Or call 1-800-444-4905.

FOR CUSTOMER ASSISTANCE, call toll free 24 hours a day at 1-800-322-8216, visit our website, or you may write to Fleetwood Enterprises, Inc., P.O. Box 7638, Riverside, CA 92513-7638.

IMPORTANT—PLEASE READ: Product information, photography and illustrations included in this publication were as accurate as possible at the time of printing. For further product information and changes, please visit our website at www.fleetwoodrv.com or contact your local Fleetwood dealer. Prices, materials, design and specifications are subject to change without notice. All weights, fuel, liquid capacities and dimensions are approximate. Fleetwood has designed its recreational vehicles to provide a variety of uses for its customers. Each vehicle features optimal seating, sleeping, storage and fluid capacities. The user is responsible for selecting the proper combination of loads (i.e. occupants, equipment, fluids, cargo, etc.) to ensure that the vehicle's capacities are not exceeded.