

"THE MOTORHOME PEOPLE"



2004



*Cruise*  
MASTER  
by GEORGIE BOY





# S P E C I F I C A T I O N S

	3600 DS	3600 DS	3625 DS	3625 DS	3640 TS	3640 TS	3755 TS	3755 TS
	WORKHORSE	FORD	WORKHORSE	FORD	WORKHORSE	FORD	WORKHORSE	FORD
Chassis	WORKHORSE	FORD	WORKHORSE	FORD	WORKHORSE	FORD	WORKHORSE	FORD
Chassis Model	W-22	F-53	W-22	F-53	W-22	F-53	W-22	F-53
Engine Size (liter)	8.1L	6.8L	8.1L	6.8L	8.1L	6.8L	8.1L	6.8L
Wheel Base	242"	242"	242"	242"	242"	242"	242"	242"
Tire size	235/80R 22.5G	235/80R 22.5	235/80R 22.5G	235/80R 22.5	235/80R 22.5G	235/80R 22.5	235/80R 22.5G	235/80R 22.5
GVWR (lbs.)	22,000	22,000	22,000	22,000	22,000	22,000	22,000	22,000
UVW (lbs.)	18,800	TBD	18,800	TBD	19,200	TBD	19,650	TBD
GAWR Front (lbs.)	8,000	7,500	8,000	7,500	8,000	7,500	8,000	7,000
GAWR Rear (lbs.)	14,500	14,500	14,500	14,500	14,500	14,500	14,500	14,500
GCWR (lbs.)	26,000	26,000	26,000	26,000	26,000	26,000	26,000	26,000
Exterior Length	36' 8"	36' 8"	36' 8"	36' 8"	36' 8"	36' 8"	37' 6"	37' 6"
Exterior Clearance Height*	11' 11"	11' 11"	11' 11"	11' 11"	11' 11"	11' 11"	11' 11"	11' 11"
Exterior Width	8' 4"	8' 4"	8' 4"	8' 4"	8' 4"	8' 4"	8' 4"	8' 4"
Interior Width	7' 11-1/4"	7' 11-1/4"	7' 11-1/4"	7' 11-1/4"	7' 11-1/4"	7' 11-1/4"	7' 11-1/4"	7' 11-1/4"
Interior Height	6' 7"	6' 7"	6' 7"	6' 7"	6' 7"	6' 7"	6' 7"	6' 7"
Sleeping Capacity	5	5	5	5	5	5	5	5
Fuel Capacity (gal.)	75	75	75	75	75	75	75	75
Fresh Water Capacity (gal.)	63	63	75	75	75	75	75	75
Waste Water Capacity (gal.)	46	46	45	45	45	45	45	45
Gray Water Capacity (gal.)	60	60	60	60	60	60	60	60
Water Heater Capacity	6 (10 OPT)	6 (10 OPT)	6 (10 OPT)	6 (10 OPT)	6 (10 OPT)	6 (10 OPT)	6 (10 OPT)	6 (10 OPT)
LP Gas Capacity (lb.)	100	100	100	100	100	100	100	100
Furnace Rating (x 1,000) BTU	(2) - 25	(2) - 25	40	40	40	40	(2)-25	(2)-25
Awning Size (ft)	15	15	20	20	17	17	17	17

**NOTE: AT THE TIME OF PRINTING THE FORD CHASSIS WITH 22.5" TIRES IS NOT AVAILABLE. PLEASE CHECK WITH YOUR DEALER FOR CHASSIS AVAILABILITY.**

**GVWR (Gross Vehicle Weight Rating):** The maximum permissible weight of the unit, including the UVW plus all fluids, cargo, optional equipment and accessories. For safety and product performance, do not exceed GVWR.

**UVW:** Means the weight of a motor home as manufactured at the factory with fuel, engine oil and coolants. The above UVW's represent a motor home with typical options. UVW will vary significantly based on option selection.

**GAWR (Gross Axle Weight Rating):** The total weight each front/rear

axle, suspension and tire system is designed to carry. When loading the unit, care should be taken to balance cargo weight in consideration of the GAWRs.

**GCWR (Gross Combined Weight Rating):** The maximum total weight of the loaded unit, plus a tow vehicle. This includes the weight of both the unit and tow vehicle, fuel for each, all other fluids, cargo, occupants, optional equipment and accessories.

\* Includes clearance for air conditioner & satellite dish

**IMPORTANT NOTE:** All capacities are approximate and all dimensions are nominal. Georgie Boy motorhomes are designed to allow for a wide variety of uses, extended trips with two people or short trips with multiple people. Accordingly, each unit allows ample room for sleeping, seating, fluids and cargo. While the customer is the beneficiary of this design, the customer also bears the responsibility to select the proper combination of passengers, cargo, load and tow vehicle without exceeding the chassis weight capabilities. Consumer may need additional braking capacity to tow loads greater than 1,000 pounds. Seat belts should always be worn for passenger safety. Seat belts are provided at most locations to allow convenience in selecting which seat to occupy. However, it is not intended that all seating positions equipped with a seat belt may be occupied while the vehicle is in motion, without regard to other weight factors. All Georgie Boy motorhomes are designed to ensure that the number of passengers allowed while the vehicle is in motion will always at least equal the stated sleeping capacity. Though extra seat belts may be provided, for your safety and the proper operation of your vehicle, limit your passengers to the number allowed by the Net Carrying Capacity of your vehicle.

We hope that you find this comprehensive, factual catalog helpful. All information contained in this brochure is believed to be accurate at the time of publication. However, during the model year, it may be necessary to make revisions and Georgie Boy reserves the right to make all such changes without notice, including changes in prices, colors, materials, equipment and specifications, as well as the addition of new models and the discontinuance of models shown in this brochure. Also, some equipment shown or described is optional and available at extra cost. Therefore, please consult with your Georgie Boy dealer to confirm the existence of any materials, design or specifications that are material to your purchase decision.

©2003 Georgie Boy Manufacturing, LLC Printed in U.S.A. All rights reserved.

Georgie Boy Mfg., LLC | 69950 M62, Edwardsburg, MI 49112 | Phone (269) 663-3415 • Fax (269) 663-2065 | Sales (877) 876-9024 • Service (800) 521-8733

Web Site: [www.georgieboy.com](http://www.georgieboy.com)

Owners Club: [www.georgieboyrvclub.com](http://www.georgieboyrvclub.com)

YOUR DEALER:

*Cruise*  
**MASTER**







# “We manufacture quality built motorhomes... right down to the last detail.”

A precision weld. An airtight waterproof seal. Or, a tightly turned screw. Details like these may not appear to be important to a casual observer. To a GBM<sup>®</sup> employee, however, it's these little things that will make a big difference in your Georgie Boy Cruise Master<sup>®</sup> experience. Over the years, “the motorhome people”<sup>®</sup> have established a large loyal following of satisfied customers. They are the repeat owners who know and appreciate the difference our *attention to detail* can make. Discover it for yourself right now as you tour our new Cruise Master for 2004.



*For long lasting exterior protection,  
Cruise Master features durable  
Gel Coat fiberglass sidewalls and  
Z-tech undercoating.*





" THE WEST NEVER LOOKED MORE INVITING . . . "

If you think our country's western terrain is colorful, get a load of the new color schemes on this year's new 2004 Cruise Master.<sup>®</sup> Choose from two outstanding standard exteriors or three optional full body paint designs. No matter which one you select, you'll also grow to appreciate the other attractive and convenient features Cruise Master has to offer including one touch automatic levelers, fog lights, heated remote exterior mirrors, thermopane tinted windows, a metal wrap to protect your main awning and more!



*Stash your saddlebags and other essential western gear in large lighted storage compartments with lights that can be turned on individually or by a master control.*





" . . . O R M O R E C O M F O R T A B L E . "

Your view of the western world is spectacular thanks to 360° swivel driver and passenger seats and slide-out side windows. Your view of the rest of the world isn't bad either, with a large overhead 27" stereo TV and entertainment center. A nifty hot and cold beverage mate console is standard, and for added safety and convenience all slide-out overhead cabinet doors come with spring-loaded hinges.



*No modern day chuck wagon would be complete without satin nickel finish appliances (available with the Estate Champagne decor), a Half Time convection microwave oven, water filtration system, side by side refrigerator or large two basin sink with satin nickel faucet.*





*Add a little European flavor and dramatic light to your western travel adventure with an elegant looking French door at the entrance to your bedroom and bath area. Choose from golden cherry wood or your choice of three optional hardwoods.*



NATURAL  
CHERRY



MANOR  
MAPLE



VELVET  
CHERRY



A tinted thermo pane window, lounge chair, and large wardrobe in the bedroom are just a few of the accents that give Cruise Master an opulent look. Choose from four spacious floor plans and three attractive interior designs. Each floor plan features generous amounts of bedroom storage. No matter which one you choose, however, you'll discover plenty of room to store your belongings.



*A standard Golden Cherry interior (left) and cozy booth is an ideal setting for a game of cards or chess. While an optional Manor Maple interior (right) and free standing dinette makes for an intimate dining experience.*





# STANDARD & OPTIONAL FEATURES

## EXTERIOR

### STANDARD

Deluxe Exterior Grab Handle at Entry Door (Except CSA)  
 Electrical Supply Cord 50 Amp.  
 Deluxe Fiberglass Sidewalls and Skirts  
 Thermo Pane Windows  
 Mud Flaps (Front & Rear)  
 Locking Gas Fill Door  
 Trailer Hitch  
 Automatic Hydraulic Leveling Jacks w/Touch Pad  
 Trunk Lights w/Illuminated Switch  
 Patio Light with Touch Pad by Entry Door  
 Electric Entry Step  
 Auxiliary Battery System - Dual Deep Cycle  
 Battery Disconnect System  
 Electric Supply Cord 50 Amp.  
 55 Amp Converter  
 Single Water Fill System w/Change-Over Valve  
 Pneumatic Water Line - Winterizing Fitting  
 Exterior Shower w/Hot & Cold Water  
 Enclosed and Heated Holding Tank Compartment  
 Awning Rails w /Gutter  
 Dead Bolt Lock at Entry Door  
 20' Sewer Hose  
 Gas Struts on Exterior Doors  
 Rear Ladder  
 Slide Room Awning  
 Automotive Underbody Undercoating  
 Black Tank Rinse System

### OPTIONS

Stainless Steel Wheel Simulators  
 Main Awning  
 Full - Body Painted Graphics (Includes -Stainless Steel Wheel Simulators and Diamond Shield Front Cap Cover

## INTERIOR

### STANDARD

Composite Countertop/Sink & Range Cover  
 Footrest Recliner  
 Handrail at Entry Door  
 Halogen Lighting Kitchen and Living Room  
 Day/Night Shades in Living Room and Bedroom  
 Bedroom TV Shelf/Cabinet  
 Upgrade Mattress  
 Bedspread  
 Shoe Rack in Wardrobe  
 Slide-Out Pantry (N.A. w/ Side By Side Refrigerator)  
 Linoleum Floor/Kitchen and Bath  
 Drawers in Dinette Base  
 Golden Cherry Cabinetry

## OPTIONS

Plank Floor/Kitchen  
 Free Standing Dinette with Two (2) Free Standing Chairs and Two (2) Extra Folding Chairs  
 Euro Recliner w/Ottoman in Bedroom (3640 TS)  
 Natural Cherry Hardwood Cabinetry  
 Velvet Cherry Hardwood Cabinetry  
 Manor Maple Hardwood Cabinetry  
 Soft Touch Footrest Recliner

## BATH FEATURES

### STANDARD

Porcelain Stool  
 Stool Spray Attachment  
 Remote Water Pump Switch  
 Bath Light Switch  
 Power Bath Vent  
 Skylight in Bath

## DRIVER'S ACCESSORIES

### STANDARD

Soft Touch Seats (Driver/Passenger)  
 Hot/Cold Beverage Holders  
 TV Antenna Warning Light in Dash  
 Driver & Passenger Seats: Swivel and Reclining  
 ABS Drink Tray  
 Windshield Privacy Drapes on Track  
 Power Outlet (12V) at Dash  
 Slide Out Tray in Dash  
 Daytime Running Lights (Ford Chassis)  
 Emergency Start Battery System  
 Driving Lights  
 Horizontal Wipers w/Wet Arms  
 Delay Wiper Switch  
 Front Mounted Exterior Mirrors (Heated & Remote)

### OPTIONS

Defroster Assist Fans w/Dash Switch  
 Power Seat (Driver)  
 Drivers Door and Slider Window  
 Air Horns  
 Daytime Running Lights (Workhorse Chassis)

## AUDIO/VISUAL

### STANDARD

AM/FM Stereo w/CD Player  
 Four (4) Radio Speakers  
 Front TV 27" (120V) With Remote

TV Distribution Panel  
 TV Antenna w/Booster  
 TV Outlets Bedroom (120V & Coax)  
 Cable TV & Phone Jacks  
 Two (2) Remote Front TV Speakers  
 19" TV - Bedroom (120-volt)  
 Remote Rear Camera with Monitor

### OPTIONS

CD Changer (10 Disk)  
 VCR  
 DVD Player  
 Satellite Dish Prep  
 CB Antenna - Only  
 Bedroom Radio w/Two (2) Speakers  
 Front Entertainment Center w/32" TV, DVD Player, VCR and Distribution Center (3625 DS)

## APPLIANCES

### STANDARD

Convection Microwave Oven - Half Time OTR  
 Pre-Wire for Roof A/C  
 Ducted Roof  
 Generator Ready  
 In Floor Ducted Heat  
 Two (2) 25,000 BTU Furnaces 'Auto Ignition' (3755 TS & 3600 DS)  
 One (1) 40,000 BTU Furnace 'Auto Ignition' (3625 DS & 3640 TS)  
 Water Heater By-Pass  
 Water Heater w/Electronic Ignition and 120 Volt  
 Water Filter (Cold Kitchen Sink)  
 Three (3) Burner Range w/Oven  
 Large Double Door Refrigerator

### OPTIONS

11,000 BTU Roof A/C Ducted Standard or Low Profile  
 13,500 BTU Roof A/C Ducted Standard or Low Profile  
 15,000 Roof A/C Ducted Duo Therm  
 Heat Strip w/Roof A/C  
 Polar-Aire Fan w/Thermostat & Rain Sensor  
 Onan Generator 5.5kw, 7.0kw Marquis Gold  
 Three(3) Burner Recessed Cook Top  
 Large Double Door Refrigerator w/Ice Maker  
 Extra Large Double Door Refrigerator w/Ice Maker  
 Side by Side Refrigerator w/Ice Maker  
 Washer/Dryer (or W/D Prep) with 10 Gallon Water Heater (3755 TS, 3600 DS & 3625 DS)

MAIN BEDROOM ACCENT



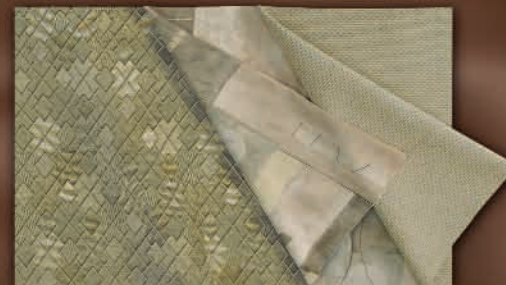
ESTATE CHAMPAGNE

MAIN BEDROOM ACCENT

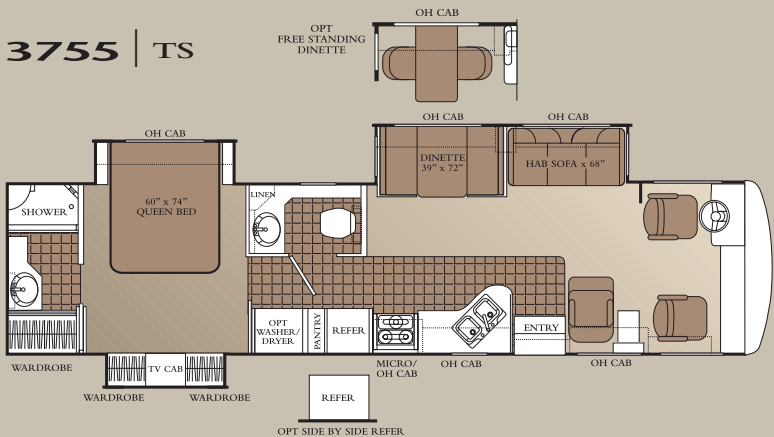
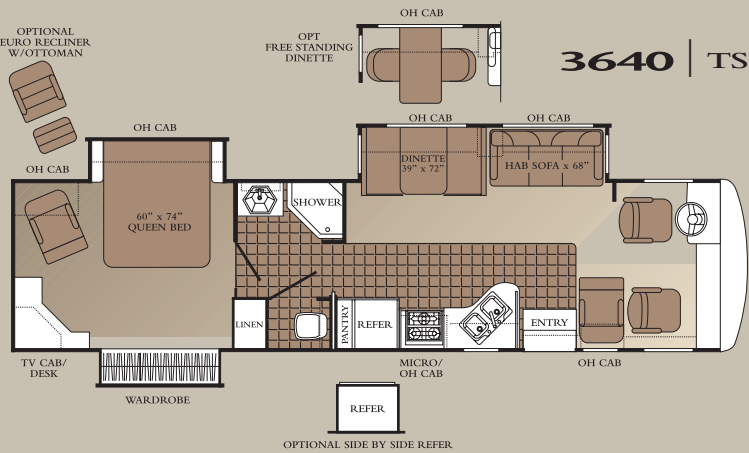
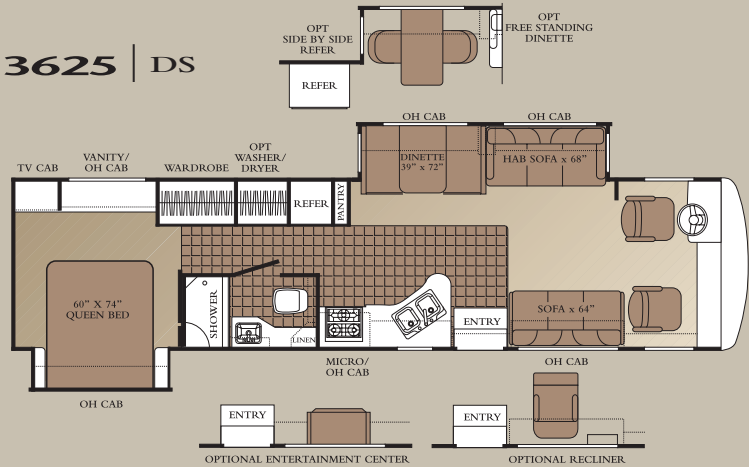
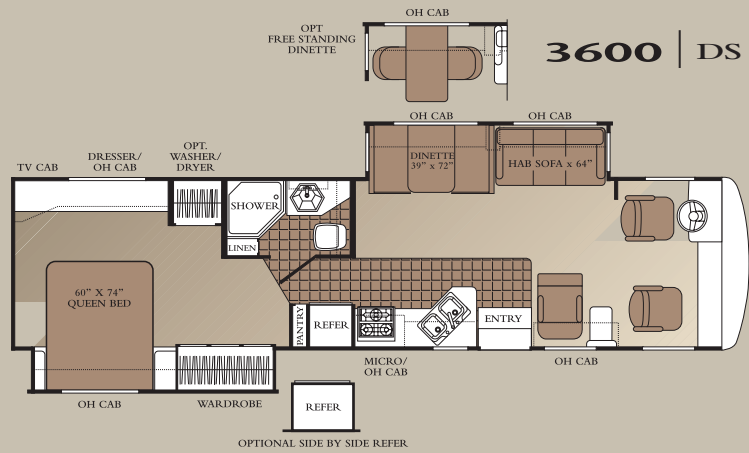


MAJESTIC MEADOWS

MAIN BEDROOM ACCENT



HIGHLAND GREEN



ESTATE CHAMPAGNE



MAJESTIC MEADOWS



HIGHLAND GREEN



GOLD DUST



PEWTER METALLIC



New to this year's Cruise Master is a built-in black tank rinse system which eliminates the need for you to have to get a hose and wash out the system.