



Bounder
TURBO DIESEL



2004

Explore Bounder Diesel's Features and Benefits.

Storage All The Way Around! — Gives you the ability to organize and distribute your load while maximizing all of the available storage space.

Forward Roof Mounted Air Conditioners — Helps keep your bedroom quiet at night, and leaves more room for storage in your basement.

Electric Patio (Optional) and Door Awnings — Just a simple and easy push of a button and you'll have it made in the shade.

Fully Automatic 4 Point Leveling System — Pick between a simple one button push operation and a do it yourself manual over ride.

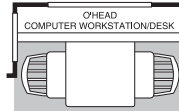
Power Platform Construction / 10" Steel I-Beams and Vacubonded Aluminum Sidewalls — A proven and completely integrated system that provides strength and durability for the longevity of your coach. This is one of the reasons we can build multiple slide-out floor plans with confidence.

Closet Organizing System and Cedar Lined Ward — Space improved for better storage and organization with cedar lining to keep everything smelling fresh and clean.

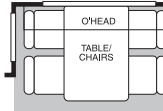
10,000 lb. Hitch Receiver* — Large capacity hitch receiver gives you more choices in the vehicle or "toys" you want to haul.

By Fleetwood — a name you know, a name you trust.

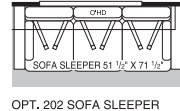
Model 37U



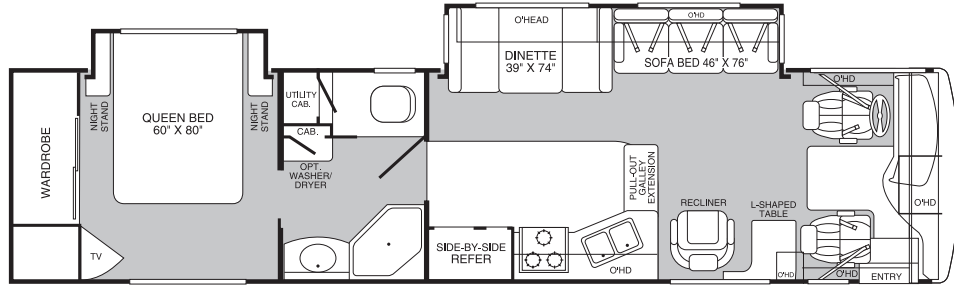
OPT. 700 COMPUTER WORKSTATION



OPT. 832 FREE-STANDING DINETTE



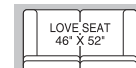
OPT. 202 SOFA SLEEPER



OPT. 894 BEDROOM DRESSER

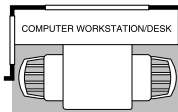


OPT. 149 NORCOLD 4-DOOR REFER

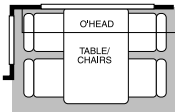


OPT. 173 LOVE SEAT

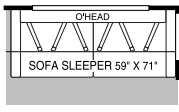
Model 38N



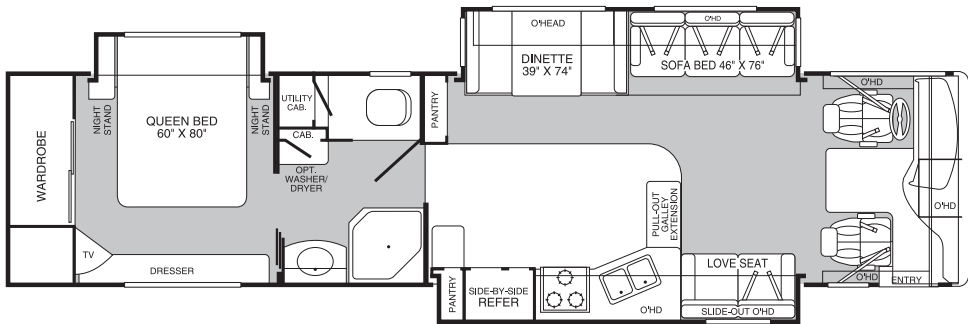
OPT. 700 COMPUTER WORKSTATION



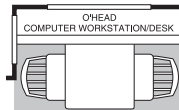
OPT. 832 FREE-STANDING DINETTE



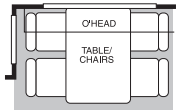
OPT. 202 SOFA SLEEPER



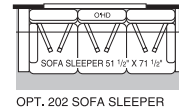
OPT. 149 NORCOLD 4 DOOR REFER



OPT. 700 COMPUTER WORKSTATION

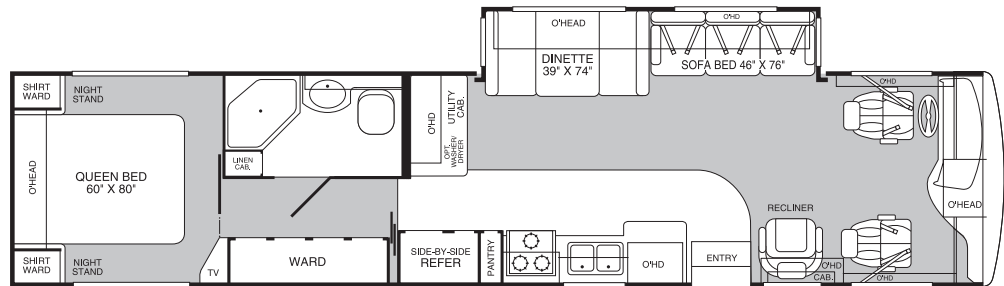


OPT. 832 FREE-STANDING DINETTE



OPT. 202 SOFA SLEEPER

Model 39Z



OPT. 149 NORCOLD 4-DOOR REFER



Standard Features

Appliances

- Front 27" Panasonic® TV in Overhead
- Rear 20" Panasonic® TV
- Panasonic® Home Theater Sound System
- Panasonic® VCR-Hi-Fi
- Video Switch Box TV/VCR
- Smoke Detector/Alarm
- LP Gas Detector/Alarm
- CO Detector/Alarm
- Furnace 20M/25M BTU Dual (34M BTU Model 34W only)
- 10-Gallon Quick-Recovery Water Gas/Electric Heater with D.S.I.
- 22" 3-Burner, High-Output Cooktop
- RV System Monitor Panel
- Dual High Efficiency A/C with Solar Panel and Chill Grill on Front A/C
- Water Heater Bypass
- Inverter/Converter (2000 Watt)
- Porcelain Toilet with Water Saver
- Toilet Tank San-T-Flush™ System
- GE® Convection Microwave
- 12 cu. ft. Dometic® Refrigerator
- Single Lever Galley Faucet
- Water Filter with Faucet
- Demand Water Pump with Filter
- Power Bath Vent
- TV Antenna
- Fan-Tastic® Power Roof Vent in Galley
- Fire Extinguisher
- Telephone Jack in Living Area and Bedroom
- Rear Speakers in Bedroom

Body Structure

- Vacu-Bond® Lower and Upper Floors
- Vacu-Bond® Walls with Smooth High Gloss Exterior Fiberglass
- Radius Roof with Ducted Air Conditioning
- Royal Tuff-Ply™—TPO Exterior Roof
- Aluminum Floor/Wall/Ceiling Framing

Electrical

- 7.5 KW Diesel Generator
- Patio Receptacle
- 120V/12V AC/DC Converter Central Electric
- 120V/12V Wire Raceways
- Water Pump Switching-3 Way
- 50 amp Service
- Wall Switches
- 4 6V/Deep Cycle 218 amp House Batteries
- Satellite Dish - STD

Exterior

- Full Fiberglass Front and Rear Caps
- Slide-Out Room Living Area
- Side Opening, Engine-Access Door
- Fiberglass Front and Rear Bumpers
- Fiberglass Wheel Wells
- Aerodynamic Bus Styling
- Radius Entry Door with Deadbolt Latch (Keyless Entry Ready)
- Dual-Pane Slider Windows
- Utility Compartment with Exterior Washdown
- Spare Tire Compartment (Tire Not Included)
- 4-point Automatic Hydraulic Levelers
- Roof Ladder
- Exterior Assist Handle

- Remote/Heated Exterior Rear View Mirrors
- 20' Sewer Hose
- Park Cable Receptacle
- Awning Rail/Drip Molding (Both Sides)
- Power Entry Step
- Dual Battery Charge Control
- Porch Light (Doorside)
- 3 Colorway Graphics to Match Decor
- Patio and Entry Door Awning

Exterior Automotive

- Large, Curved Aerodynamic Windshield
- Undercoating
- Stainless Steel Wheel Simulators
- Valve Extenders
- Mud Flaps
- Underhood Utility Light
- Steel Surface on Bulkhead
- Trailer Hitch with 7-Pin Electrical Hookup*
- Halogen Headlights
- Fog Lamps
- Rear Vision Camera
- Windshield Wipers with Wet Arm
- Freightliner® Chassis 300HP
- Air Suspension

Exterior Storage

- Insulated Luggage Doors
- Single Paddle/Metal Latches
- One-Piece Bulb Seal
- Central Utility Compartment
- Hidden Stainless Steel Latch Rods
- Gas-Lift Strut Supports (2 Stage Under Slide Box)
- Lights in Compartments
- Steel Seal Frames

Interior

- 9 Interior Decor/Combinations
- Woven Jacquard Feature Fabrics
- Skylight in Shower
- Glass Shower Door with Bright Brass Frame
- Flexsteel® Furniture
- Cherry Wood Grain, Birch Wood Grain or Maple Wood Grain
- Wall-to-Wall Nylon Carpet-Trackless Plush
- Carpet Pad
- Vinyl Floor Covering in Galley, Bath and Entry
- Wood Drawers
- Full Extension Ball Bearing Drawer Slides with Transit-Ship Locks
- Radius Corner Cabinetry
- Large Overhead Cabinets
- Antique Brass Cabinet Hardware
- Free Standing Swivel Recliner (37U and 39Z)
- Pleated Shades
- Bedspread with Decor Pillows
- Innerspring Mattress
- Solid Surface Galley Countertops
- Crown Molding
- Headboard (39Z)
- Beveled Decor Mirrors
- Window Coverings (Color Coordinated to Decor)
- Galley Sink Cover/Cutting Board
- Solid Surface Lavy Top
- Antique Brass Bath Accessories
- Residential Seat Styling
- Raised-Panel Overhead Cabinet Doors
- Adjustable Cabinet Shelves (Selected Cabinets)
- Large, Porcelain, Double Sink in Galley

Interior Automotive

- Intermittent Wiper Control
- Multi-Function Sun Visor
- DSS Manual Lift/Winegard® Satellite Dish
- Cruise Control
- Stereo AM/FM with CD-Cassette
- Auxiliary Start Circuit
- Battery Disconnect System
- Auto A/C Heater Combo
- Radio Switch—Main/Auxiliary Power
- Soft Surface Automotive Dash
- Tilt/Telescoping Steering Wheel
- Ultraleather™ Driver and Passenger Seats, Power Driver
- 3-Point Front Seat Belts
- Solar Battery Charger
- Ceiling Ducted Roof Air Conditioning
- Dash Fans

Interior Lighting

- Fluorescent Ceiling Lights with Dual Bulbs
- Decor Lighting
- Incandescent Lighting
- Make-up Lights in Bath

Platform Construction

- Power Platform Floor Configuration
- Heated Water & Holding Tank Compartments
- Polyethylene Luggage Compartment Boxes
- Paco® Beam System

Slide-Out

- Living Room (Dinette/Sofa)(37U, 38N, 39Z)
- Galley (34M)
- Bed (34M, 34W, 37U, 38N)
- Dinette/Refrigerator (34W)
- Galley/Refrigerator (38N)

* The chassis manufacturer recommends the installation of a supplemental brake control system to activate the brakes on the vehicle or trailer you are towing.

Options

Appliances

- Dual A/C with Solar Panel & Heat Pump
- Washer/Dryer (N/A 34W)
- 22" 3-Burner, High-Output, Cooktop Range w/Oven
- Norcold® 12 cu. ft. Refrigerator

Exterior Automotive

- Front Protective Mask
- CSA Package—Freightliner®
- Electric Awning

Interior

- Auto Locating Satellite Dish
- Remote Keyless Entry Door
- Ultraleather™ Sofa
- Love Seat (37U and Standard on 38N)
- Ultraleather™ Love Seat (37U and 38N)
- Ultraleather™ Swivel Recliner (37U and 39Z)
- Sleeper Sofa (37U, 38N and 39Z)
- Free-Standing Dinette & Chairs (N/A 34W)
- Ultraleather™ Driver & Passenger Seats, Power Driver, Power Passenger with Power Foot Rest

Interior Automotive

- Power Sun Visors
- Stereo AM/FM with 6 Disc CD

Freightliner® Chassis	34M	34W	37U	38N	39Z
Engine Liters	5.9L	5.9L	5.9L	5.9L	5.9L
Wheelbase	208"	208"	242"	252"	252"
GVWR (lbs) (1)	27,910	27,910	27,910	27,910	27,910
Front GAWR (lbs) (2)	10,410	10,410	10,410	10,410	10,410
Rear GAWR (lbs) (2)	17,500	17,500	17,500	17,500	17,500
Base Weight (lbs) (3)	20,050	20,050	21,555	21,724	20,775
GCWR (lbs) (4)	37,910	37,910	37,910	37,910	37,910
Hitch Rating (lbs)*	10,000	10,000	10,000	10,000	10,000
Tongue Weight (lbs)*	1,000	1,000	1,000	1,000	1,000
Fuel Capacity (gal)	90	90	90	90	90

Dimensions and Capacities

Overall Length (5)	34' 8"	34' 8"	37' 6"	38' 4"	39' 0"
Overall Height (with A/C)	12' 1"	12' 1"	12' 1"	12' 1"	12' 1"
Overall Width (maximum) (6)	102"	102"	102"	102"	102"
Interior Height (maximum)	79"	79"	79"	79"	79"
Interior Width (maximum)	96"	96"	96"	96"	96"
Fresh Water Holding Tank (gal)	86	86	86	86	86
Grey Water Holding Tank (gal)	50	50	50	50	50
Black Water Holding Tank (gal)	50	50	50	50	50
Appliance LP Gas Tank (gal) (WC) (7)	25	25	25	25	25
Water Heater Tank (gal)	10	10	10	10	10

Liquid Weight Reference: Water (gal) = (8.3 lbs/3.8 kgs) Fuel (gal) = (7.1 lbs/3.2 kgs) LPG (gal) = (4.2 lbs/1.9 kgs)

Metric Conversion: Multiply pounds x 0.453 to obtain kilograms Multiply gallons x 3.785 to obtain liters

1. GVWR (Gross Vehicle Weight Rating): Means the maximum permissible loaded weight of the motor home. The GVWR is equal to or greater than the sum of the unloaded vehicle weight plus the net carrying capacity.
 2. GAWR (Gross Axle Weight Rating): Means the maximum permissible loaded weight a specific axle is designed to carry.
 3. Base Weight: Means the estimated weight of the motor home without fuel, options, water, cargo or passengers.
 4. GCWR (Gross Combined Weight Rating): Means the value specified by the motor home manufacturer as the maximum allowable loaded weight of this motor home with its towed vehicle. Towing and braking capacities may differ. Refer to Fleetwood and chassis manufacturer manuals for complete information.
 5. Length taken from front bumper to rear bumper (excludes accessories).
 6. Excludes safety equipment and awnings.
 7. Tank Manufacturer's listed water capacity (WC). Actual LPG capacity is 80% of water listing as required by the safety code.
- * The chassis manufacturer recommends the installation of a supplemental brake control system to activate the brakes on the vehicle or trailer you are towing.

IMPORTANT — PLEASE READ: Product information, photography and illustrations included in this publication were as accurate as possible at the time of printing. For further product information and changes, please visit our website at www.fleetwoodrv.com or contact your local Fleetwood dealer. Prices, materials, design and specifications are subject to change without notice. All weights, fuel, liquid capacities and dimensions are approximate. Fleetwood has designed its recreational vehicles to provide a variety of uses for its customers. Each vehicle features optimal seating, sleeping, storage and fluid capacities. The user is responsible for selecting the proper combination of loads (i.e. occupants, equipment, fluids, cargo, etc.) to ensure that the vehicle's capacities are not exceeded.



RV OWNERCARE...

is a limited one-year/three-year or 15,000 mile warranty, whichever occurs first, and it is fully transferable for the first 12 months.



RV OWNERCARE is one of the RV industry's most comprehensive programs and includes systems, appliances, components, and construction, with no deductible and no service charge.

RV OWNERCARE coverage is provided from a company that will be around in the future to service your needs. See your nearest Fleetwood dealer for a full explanation of benefits and restrictions.

Club Fleetwood...

As a Fleetwood owner, you're eligible to become a member of our owners group, Club Fleetwood. It's a perfect way to meet other Fleetwood owners who love to travel to beautiful resorts and vacation spots all across America. Call (877) 577-2560 and join the fun!



What Drives You?

Maybe it's feeling like you're the only one on Earth. Perhaps it's the unique sense of closeness with the great outdoors. Or, it might be the joy that comes from spending quality time with family and friends.

Whatever the reason, we know that you have a strong drive to experience everything that comes with spending time on the road. And for more than 50 years, we've shared that passion with you.

Because we're RV enthusiasts ourselves, you can see our passion in the vehicles we design and build. Own a Fleetwood, and you'll feel like you're not just traveling, but embarking on an experience unlike any other.

Set your own course for adventure and get out there and explore the world around you. Once you do, you'll see what it is that drives us — it's you.



Your local Fleetwood dealer is:

www.fleetwoodrv.com Visit our website to find a dealer near you or learn more about other Fleetwood products. Or call 1-800-444-4905.



IMPORTANT—PLEASE READ: Product information, photography and illustrations included in this publication were as accurate as possible at the time of printing. For further product information and changes, please visit our website at www.fleetwoodrv.com or contact your local Fleetwood dealer. Prices, materials, design and specifications are subject to change without notice. All weights, fuel, liquid capacities and dimensions are approximate. Fleetwood has designed its recreational vehicles to provide a variety of uses for its customers. Each vehicle features optimal seating, sleeping, storage and fluid capacities. The user is responsible for selecting the proper combination of loads (i.e. occupants, equipment, fluids, cargo, etc.) to ensure that the vehicle's capacities are not exceeded.