

**FLEETWOOD**  
*Driven to Explore*

{Fiesta}

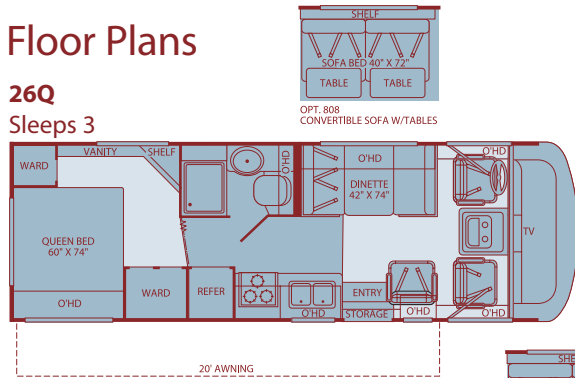
F I E S T A Class A Gas 2005



## Floor Plans

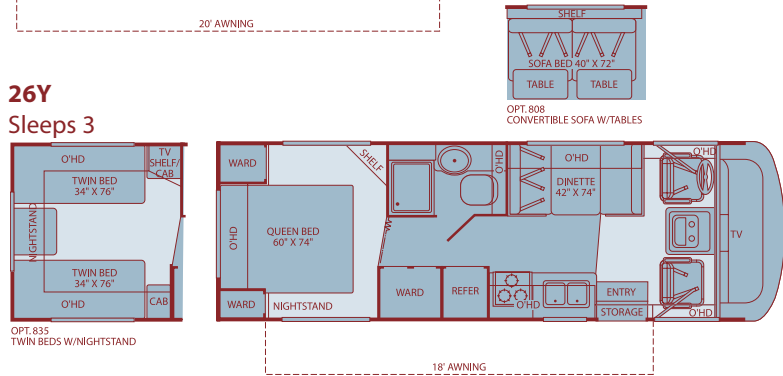
### 26Q

Sleeps 3



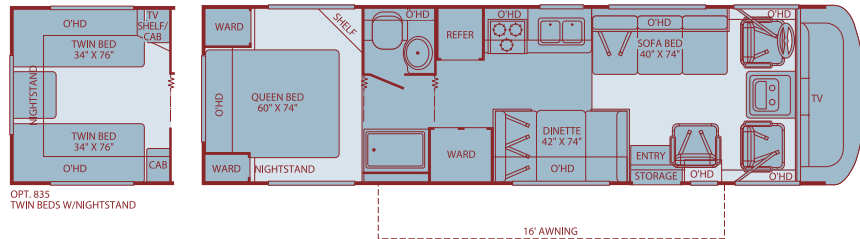
### 26Y

Sleeps 3



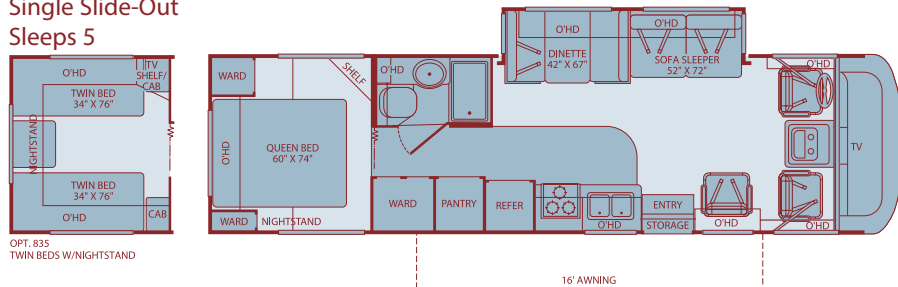
### 31H

Sleeps 4



### 32S

Single Slide-Out  
Sleeps 5



Seatbelt configuration may vary depending on options chosen. Sleeping capacity based on standard layout. Optional furniture may increase or decrease sleeping capacity.

## Weights and Measurements

### FORD®/WORKHORSE™

CHASSIS	26Q	26Y	31H	32S
Engine Displacement (Liters)	N/A/8.1	N/A/8.1	6.8/8.1	6.8/8.1
Wheelbase (Inches)	N/A/158.5	N/A/158.5	190/190	208/208
GVWR (lbs) <sup>1</sup>	N/A/15,000	N/A/15,000	15,700/15,000	20,500/17,000
Front GAWR (lbs) <sup>2</sup>	N/A/6,000	N/A/6,000	6,000/6,000	7,000/6,000
Rear GAWR (lbs) <sup>2</sup>	N/A/11,000	N/A/11,000	11,000/10,000	13,500/11,000
Base Weight (lbs) <sup>3</sup>	N/A/11,293	N/A/10,808	13,184/12,303	14,225/13,649
GCWR (lbs) <sup>4</sup>	N/A/18,500	N/A/18,500	20,700/18,500	25,500/20,500
Hitch Rating Weight (lbs)*	N/A/3,500	N/A/3,500	5,000/3,500	5,000/3,500
Tongue Weight (lbs)*	N/A/350	N/A/350	500/350	500/350
Fuel Capacity (gal)	N/A/60	N/A/60	75/75	75/75

### DIMENSIONS AND CAPACITIES

	26Q	26Y	31H	32S
Overall Length <sup>5</sup>	27' 0"	27' 0"	31' 5"	32' 11"
Overall Height (with A/C) <sup>1</sup>	11' 4"	11' 4"	11' 4"	11' 4"
Overall Width (maximum) <sup>6</sup>	102"	102"	102"	102"
Interior Height (maximum)	79"	79"	79"	79"
Interior Width (maximum)	96"	96"	96"	96"
Fresh Water Holding Tank (gal)	30	60	60	60
Grey Water Holding Tank (gal)	37	37	48	45
Black Water Holding Tank (gal)	30	30	38	38
Appliance LPG Tank (gal) (WC) <sup>7</sup>	14	14	25	14
Water Heater Tank (gal)	6	6	6	6

**Liquid Weight Reference:** Water (gal) = (8.3 lbs/3.8 kgs) Fuel (gal) = (6.1 lbs/2.8 kgs) LPG (gal) = (4.2 lbs/1.9 kgs)

**Metric Conversion:** Multiply pounds x 0.453 to obtain kilograms. Multiply gallons x 3.785 to obtain liters.

### CHASSIS

**Model:** Ford®/Workhorse™

**Engine:** 6.8L Triton™ V10/8.1L Vortec V8

**Torque:** 425 lb.-ft. @ 3250 RPM/455 lb.-ft. @ 3200 RPM

**Transmission:** 4-Speed Automatic w/Overdrive

**Alternator Amps:** 130 Amp/145 Amp

**Horsepower:** 310HP/340HP

- GVWR (Gross Vehicle Weight Rating): Means the maximum permissible loaded weight of the motor home. The GVWR is equal to or greater than the sum of the unloaded vehicle weight plus the net carrying capacity.
- GAWR (Gross Axle Weight Rating): Means the maximum permissible loaded weight a specific axle is designed to carry.
- Base Weight: Means the estimated weight of the motor home without fuel, options, water, cargo or passengers.
- GCWR (Gross Combined Weight Rating): Means the value specified by the motor home manufacturer as the maximum allowable loaded weight of this motor home with its towed vehicle. Towing and braking capacities may differ. Refer to Fleetwood and chassis manufacturer manuals for complete information.
- Length taken from front bumper to rear bumper (excludes accessories).
- Excludes safety equipment and awnings.
- Tank Manufacturer's listed water capacity (WC). Actual LPG capacity is 80% of water listing as required by the safety code.

\* The chassis manufacturer recommends the installation of a supplemental brake control system to activate the brakes on the vehicle or trailer you are towing.

N/A = Not Applicable

† = Only if Standard

## Standard Features

### Interior

#### THROUGHOUT

- **Fiber Ceilings for Superior Sound Dampening\***
- **6-Gallon Quick-Recovery Water Heater w/Direct Spark Ignition\***
- **Wall Mounted Heat Registers\***
- 3 Interior Decors
- Incandescent Lighting
- 35,000 BTU Furnace (Model 31H & 32S)

#### DRIVER CONVENIENCE

- **AM/FM/Cassette Radio w/CD & Electronic Tuning\***
- **Double Swivel Sun Visors w/Map Pockets\***
- **Driver/Passenger Captain's Chairs w/Reclining Back & Side Controls\***

#### LIVING ROOM

- **Flexsteel® Furniture\***
- **20" TV in Front Dash\***
- 12V Power Jack

#### GALLEY

- **Single-Lever Faucet\***
- **Wood Drawer Construction\***
- **Large Viewing Window at Dinette\***
- Large White Double Sink

#### BEDROOM

- **Innerspring Mattress\***

#### BATHROOM

- **Skylight in Tub/Shower\***
- **Molded ABS Tub/Shower\***

- Interior Overhead Storage
- Water Heater By-Pass
- On-Demand Water Pump w/Filter
- Battery Disconnect System
- Denso A/C Heater Combo w/17,000 BTUs of Cooling Ability
- Systems Monitor Panel 120V/12V AC/DC Converter/Central Electrical Panel w/Charger

- Tilt Steering Wheel
- Intermittent Wiper Control System
- Full Dash Mat
- Engine Cover Convenience Tray
- Cruise Control
- Auxiliary Start Circuit

- **Vinyl Floor Covering in Lavy/Galley\***
- Telephone Jack

- Chrome Finished Cabinet Hardware
- Hardwood Mortise & Tenon Frame Cabinet Doors
- Sink Cutting Boards

- Rear TV Receptacle

- Marine Toilet w/ Tissue Holder
- Make-up Lights

- 25,000 BTU Furnace (Model 26Q & 26Y)
- Raised Floor Configuration
- 12V Deep Cycle House Battery
- 10 ABC Fire Extinguisher
- Smoke Detector/Alarm
- LPG Detector/Alarm
- CO Detector/Alarm

- Radio Switch-Main/Auxiliary
- 3-Point Seat Belts at Driver & Front Passenger Seats

- Video Control Box
- Carpet Pad

- 3-Burner Range w/Oven
- Microwave w/Built-in Range Hood & Light
- 8-cu. ft. Dometic® Refrigerator

- Expanded Wardrobe Storage

- Power Bath Vent

### Exterior

#### THROUGHOUT

- **4-Point Coach Leveling System\* (32S)**
- **Awning Rail/Drip Molding\* (Both Sides)**
- **4.0kW Onan® MicroQuiet Generator\***
- **Outstanding Exterior Styling\***

#### AUTOMOTIVE

- **Rear Fuel Fill\*(26Y, 31H & 32S)**
- **Halogen Headlights w/Polycarbonate Lens\***
- **Spare Tire w/ Carrier\***

#### SAFETY / CONVENIENCE

- **Deadbolt Latch on Entry Door\***
- **Power Entry Step\***
- **High Mounted Large Taillights\***
- Slider Windows Throughout

#### BODY STRUCTURE

- **Two-Piece Fiberglass Front Cap\***
- **Steel Floor/Wall/Ceiling Framing\***
- 2" Vacu-bond® Floor

#### STORAGE

- **Large, Lighted Pass-Through Exterior Storage Compartment\***

- Roof Ladder
- UV Resistant ABS Front/Rear Wheel Well Trims
- Single Front Roof A/C 13.5 BTU
- Exterior Rear View Mirrors
- Amber Porch Light

- Stainless Steel Wheel Simulators
- Valve Extenders on Rear Wheels
- Trailer Hitch w/7-Point Electrical Hook-up†

- One-Piece Swing-Down Engine Access Door
- Patio Receptacle
- Large Entry Assist Handle

- 5,000 lb. Towing Capacity (Ford® Chassis)
- 26" Radius Entry Door

- Roto Cast Luggage Compartments

- 30 AMP Service
- 3 Colorway Graphics to Match Decor
- Awning
- Water Pump Switch
- TV Antenna w/Booster

†The chassis manufacturer recommends the installation of a supplemental brake control system to activate the brakes on the vehicle or trailer you are towing.

- Park Cable Receptacle
- Dual Battery Charge Control

- Windshield bonded to Fiberglass Front Cap
- Powder-Coated Steel Rear Bumper

- Insulated Luggage Doors

## Options

#### THROUGHOUT

- Electronic Climate Control w/Dual A/C w/5.5kW Generator Upgrade (Recommended for extreme temperatures & high humidity conditions) (31H & 32S)
- Holding Tank Heater
- Dual 6V Auxiliary Batteries

#### BEDROOM

- Sofa Bed 40" x 72" w/Table (26Q & 26Y)
- Twin Beds 34" x 76" w/Nightstand (26Y, 31H & 32S)

#### GALLEY/LIVING ROOM

- Fan-Tastic® Power Roof Vent
- Day/Night Pleated Shades
- DVD/VCR Combo Player

## Fleetwood Exclusives

- **Complete TuffPEX® Plumbing System\***
- **EZ Glide® Slide-Out System w/EZ Store\* (32S)**

- **Tuff-Ply Radius Roof w/Ducted A/C & Flat Ceiling\***
- **Deluxe Ball Bearing, Full Extension Drawer Guides\***

- **Vacu-bond® Walls w/Smooth High-Gloss Exterior Tuff-Coat® Fiberglass\***

\* Denotes Fleetwood's Key Features

## Setting the Standard in Motor Home Quality.

Fleetwood® prototypes are exposed to thousands of miles of durability testing. Those components that don't survive are redesigned until they do. This sets our standard in safety and durability.

**Fleetwood's Tuff-Ply roofing technology is one of the most durable roofing materials on the market and also resists radiation by reflecting sunlight (reduces chalking).** White roof material minimizes heat build-up, keeping the temperature cool and comfortable.

**Reliable TuffPEX® plumbing runs throughout each vehicle creating a durable seal on all internal tubing. TuffPEX® assures water flow and functions in the coldest of temperatures.** The TuffPEX® system is an industry leader in quality plumbing.

**For each outer wall, Fleetwood uses one seamless, solid piece of its exclusive Tuff-Coat® fiberglass composite. It resists UV rays, cracks and impacts.** Our products look newer longer and that's a big plus at resale time.

**To assure a strong, weather-resistant structure, Fleetwood Vacu-bonds® all sidewalls, floors and ceilings to a durable aluminum or steel frame.** The Vacu-bond® process is unmatched by many competitors.

*IMPORTANT — PLEASE READ: Product information, photography and illustrations included in this publication were as accurate as possible at the time of printing. For further product information and changes, please visit our website at [www.fleetwoodrv.com](http://www.fleetwoodrv.com) or contact your local Fleetwood dealer. Prices, materials, design and specifications are subject to change without notice. All weights, fuel, liquid capacities and dimensions are approximate. Fleetwood has designed its recreational vehicles to provide a variety of uses for its customers. Each vehicle features optimal seating, sleeping, storage and fluid capacities. The user is responsible for selecting the proper combination of loads (i.e. occupants, equipment, fluids, cargo, etc.) to ensure that the vehicle's capacities are not exceeded.*



## What Drives You?

Maybe it's feeling like you're the only one on Earth. Perhaps it's the unique sense of closeness with the great outdoors. Or, it might be the joy that comes from spending quality time with family and friends. Whatever the reason, we know that you have a strong drive to experience everything that comes with spending time on the road. And for more than 50 years, we've shared that passion with you. Because we're RV enthusiasts ourselves, you can see our passion in the vehicles we design and build. Own a Fleetwood, and you'll feel like you're not just traveling, but embarking on an experience unlike any other. Set your own course for adventure and get out there and explore the world around you. Once you do, you'll see what it is that drives us — it's you.

**RV OWNERCARE\*** is a limited one-year/15,000-mile and three-year/50,000-mile structural warranty, whichever occurs first, and it is fully transferable for the first 12 months. RV OWNERCARE is one of the RV industry's most comprehensive programs and includes systems, appliances, components and construction, with no deductible and no service charge. RV OWNERCARE coverage is provided from a company that will be around in the future to service your needs. See your nearest Fleetwood dealer for a full explanation of benefits and restrictions.

**CLUB FLEETWOOD** As a Fleetwood owner, you're eligible to become a member of our owners' group, Club Fleetwood. It's a perfect way to meet other Fleetwood owners who love to travel to beautiful resorts and vacation spots all across America. Call (877) 577-2560 and join the fun! Or visit [www.fleetwood.com/clubs](http://www.fleetwood.com/clubs) to learn more.

**FLEETWOODRV.COM** To locate a dealer near you, visit our website or call 1-800-444-4905. We can also be contacted at Fleetwood Customer Relations, P.O. Box 7638, Riverside, CA 92513-7638.



[www.fleetwoodrv.com](http://www.fleetwoodrv.com)

**IMPORTANT—PLEASE READ** Product information, photography and illustrations included in this publication were as accurate as possible at the time of printing. For further product information and changes, please visit our website at [www.fleetwoodrv.com](http://www.fleetwoodrv.com) or contact your local Fleetwood dealer. Prices, materials, design and specifications are subject to change without notice. All weights, fuel, liquid capacities and dimensions are approximate. Fleetwood has designed its recreational vehicles to provide a variety of uses for customers. Each vehicle features optimal seating, sleeping, storage and fluid capacities. The user is responsible for selecting the proper combination of loads (i.e. occupants, equipment, fluids, cargo, etc.) to ensure that the vehicle's capacities are not exceeded.

Your local Fleetwood dealer is:

\*For complete info see your Fleetwood dealer. © 2004. Fleetwood Enterprises, Inc. Printed in the USA. Inventory control number FI05F2 10/04.

