



Jamboree Floor Plans, Standard Features and Options

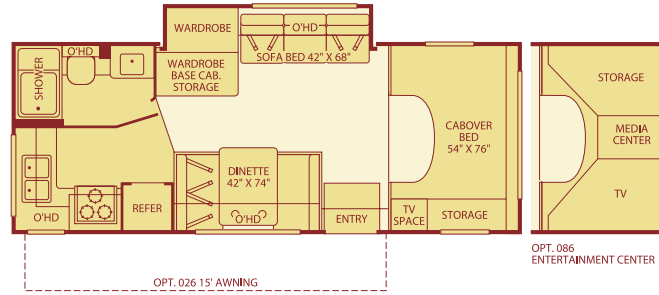
{Jamboree}



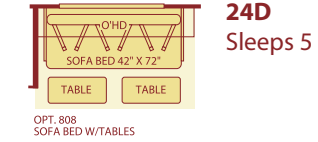
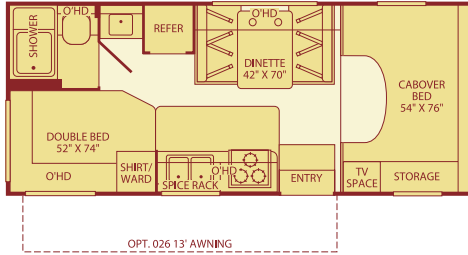
J A M B O R E E Class C 2005

Floor Plans

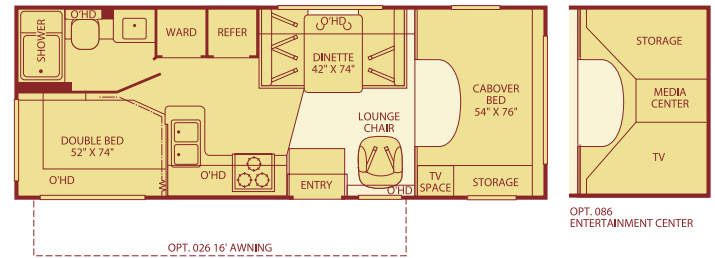
23E
Single Slide-Out
Sleeps 4



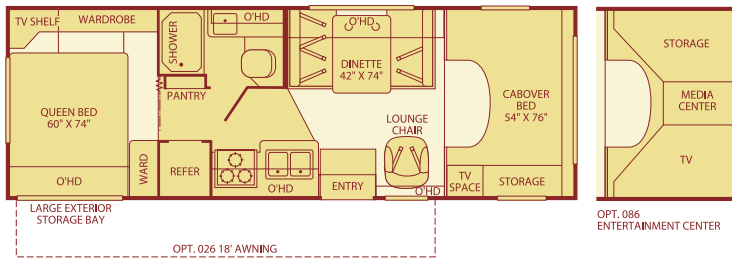
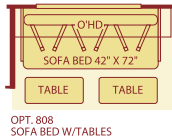
22B
Sleeps 5



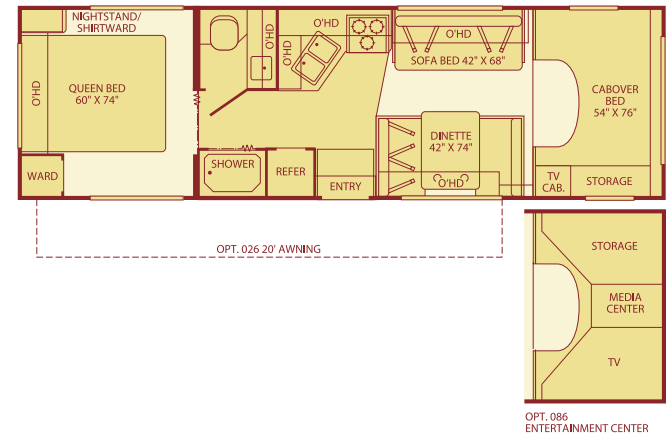
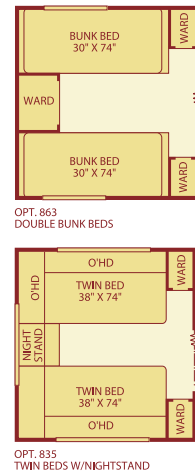
24D
Sleeps 5



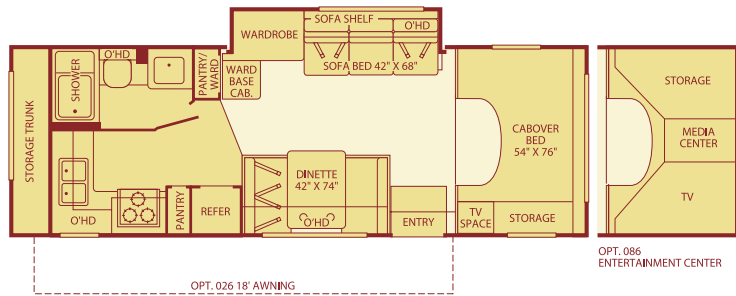
26Q
Sleeps 5



29V
Sleeps 6



26G
Single Slide-Out
Sleeps 4



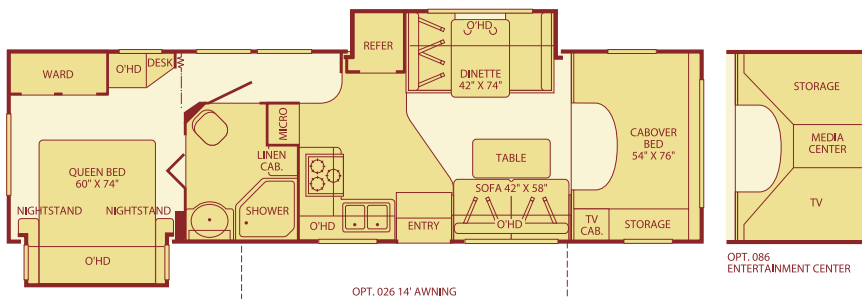
Setting the Standard in Motor Home Quality.

Fleetwood® prototypes are exposed to thousands of miles of durability testing. Those components that don't survive are redesigned until they do. This sets our standard in safety and durability.

- 1** Fleetwood's Tuff-Ply roofing technology is one of the most durable roofing materials on the market and also resists radiation by reflecting sunlight (reduces chalking). White roof material minimizes heat build-up, keeping the temperature cool and comfortable.
- 2** Reliable TuffPEX® plumbing runs throughout each vehicle creating a durable seal on all internal tubing. TuffPEX® assures water flow and functions in the coldest of temperatures. The TuffPEX® system is an industry leader in quality plumbing.
- 3** For each outer wall, Fleetwood uses one seamless, solid piece of its exclusive Tuff-Coat® fiberglass composite. It resists UV rays, cracks and impacts. Our products look newer longer and that's a big plus at resale time.
- 4** To assure a strong, weather-resistant structure, Fleetwood Vacu-bonds® all sidewalls, floors and ceilings to a durable aluminum or steel frame. The Vacu-bond® process is unmatched by many competitors.
- 5** High Density block foam insulation is precisely cut to fit between framing members. This insures maximum insulation throughout the vehicle.

Drawings are for illustrative purpose only to highlight aspects of motor home construction. Actual motor home design depends on model and is subject to change.

31M
Double Slide-Out
Sleeps 5



Seatbelt configuration may vary depending on options chosen. Sleeping capacity based on standard layout. Optional furniture may increase or decrease sleeping capacity.

Standard Features

Interior

THROUGHOUT

- **Quality Constructed Furniture by Flexsteel®***
- **Deluxe Ball Bearing, Full Extension Drawer Guides***
- Carpet w/Pad & Vinyl Flooring in Galley & Lavy
- Mortise & Tenon Doors w/Hardwood Frames
- 6 Gallon Water Heater, Electronic Ignition, LP Gas
- Water Heater Bypass Valve— Fresh Water System Winterization
- 13,500 BTU/ Ducted Air Conditioner (22B, 23E, 24D, 26G & 26Q)
- 12V Water Pump, Demand Operation
- Windsor Birch Woodgrain Cabinetry
- 15,000 BTU/Ducted Air Conditioner (29V & 31M)
- Water Pump Controller, On/Off Switches at Galley, Lavy & Optional Exterior Wash Unit
- 25,000 BTU Furnace, Auto-Ignition, Ducted, Wall Mtd. Thermostat (22B, 23E & 24D)
- 30,000 BTU Furnace, Auto-Ignition, Ducted, Wall Mtd. Thermostat (26Q, 26G & 29V)
- Auxiliary Battery, Disconnect Switch on Monitor Panel
- Large Entry Assist Handle
- GFI Circuit Protection in Galley, Lavy, Patio Receptacles

DRIVER CONVENIENCE

- **In Dash AM/FM Radio w/CD/ Cassette Player *(Ford®)**
- **In Dash AM/FM Radio w/CD Player* (Chevy®)**
- **3-Point Seat Belts: Driver and Passenger Bucket Seats***
- Cabover Bunk Ladder (Supplied w/Cabover Bunk Arrangement)
- Flexsteel® Adjustable/Reclining Bucket Seats w/Armrest (Ford®)
- Driver/Passenger Airbag Supplemental Restraint System
- 4 Speakers, (2 in Cab Doors, 2 Ceiling Mounted)
- Power Windows & Door Locks

LIVING ROOM

- **Sofabed w/Armrests & Snack Tray/Convertible for Sleeping* (23E, 26G & 29V)**
- **Day/Night Pleated Shades***
- **54" X 76" Cabover Bed with Patented Slider Bunk Operation, Privacy Curtain, Roof Vent & Sliding Side Windows***
- **Large Viewing Window at Dinette***
- **Dinette, Convertible for Sleeping***
- Lap Belts at Selected Living Area Seating Positions
- Dinette/Refrigerator Slide-Out w/Debris Awning (31M)
- 2 Cup-Holders in Dinette

GALLEY

- **Drawer Boxes w/Real Wood Construction***
- **Kitchen Convenience Package: Spice Rack, Knife Holder, Paper Towel Holder, Sink Cover/Cutting Board, Silverware Drawer***
- Residential Size Double Sink Bowl
- Dometic® 6 cu. ft. Refrigerator/Freezer
- 3-Burner Range w/High-Output/Piezo Ignitor & Oven
- Single Lever Control Faucet

BEDROOM

- **Night Pleated Shades* (N/A on 23E or 26G)**
- **Innerspring Mattress* (N/A on 23E or 26G)**
- **Roof Vent *(N/A 23E or 26G)**
- **TV Shelf w/12V & Cable Jacks, AC Receptacle* (24D, 26Q and 29V)**
- Queen Bed (26Q, 29V & 31M)
- Adjustable Reading Lights (N/A 23E or 26G)

BATHROOM

- **Skylight/Roof Vent w/12V Fan***
- **Bath Door w/Residential Passage Lock and Towel Bars***
- Molded ABS Shower/Tub Surround/Pan
- Shower Head w/Flexible Hose Extension
- Rectangular Sink w/Dual Control Faucet
- Wall Mounted Mirror
- Medicine Cabinet w/Wood Construction
- Marine Style Toilet w/Tissue Roll Holder

* Denotes Fleetwood's Key Features

- Monitor Panel: Auxiliary & Chassis Battery Condition Check, Holding Tank Levels, Fresh Water Tank Level, LP Gas Tank Level, All Level Readings in ¼ Increments, Direct Spark Ignition Water Heater Switch w/Lighted Indicator, Water Pump Switch w/On Indicator Light, Battery Disconnect Switch, Generator Start/Stop Switch & Hour Meter
- LPG Detector/Alarm
- Smoke Detector/Alarm
- CO Detector/Alarm
- 10 ABC Fire Extinguisher

- Chassis Supplied: Heating & Air Conditioning, Cigarette Lighter/12V Power Supply, Intermittent Windshield Wipers, Power Steering w/Tilt Wheel, Cruise Control, Sunvisors (2), Dome Light, Beverage Cup-Holders, Map Pocket

- Telephone/Modem Jack w/Exterior Jack Input
- Ceiling Lights w/Wall Switches at Entry & Lavy
- Wardrobe/Sofa Slide-Out w/Debris Awning (23E & 26G)
- Swivel Base Lounge Chair w/Dual Lock Position (24D & 26Q)

- Rangehood w/Light & Fan
- 1.0 cu. ft. Microwave Oven w/Touch Panel
- Flip-Top Extension (N/A on 23E or 26G)
- Decorative Wall Border

- Double Bed (22B & 24D)
- Bedspread w/Pillow Shams (N/A on 23E or 26G)

Exterior

THROUGHOUT

- **Outstanding Exterior Graphics and Styling***
- **One Piece Crowned Roof w/Tuff-Ply Covering***
- **High-Gloss Tuff-Coat® Smooth Fiberglass Exterior***
- **Onan® 4.0kW Microquiet Generator 2.8 kW* (22B)**

AUTOMOTIVE

- **Ford® E450 Chassis, 6.8L Triton™ V10 w/305 HP, Dual Airbags, 4W Anti-Lock Brakes, Automatic 5-Speed Transmission w/Overdrive***
- **Chevy® Express Chassis, 6.0L Vortec V8 w/300 HP, Dual Airbags, 4W Anti-Lock Brakes, Automatic 4-Speed Transmission w/Overdrive***
- 7-Pin Hitch Plug[†]
- AC/DC Load Center w/12V Converter/Battery Charger
- 12V Auxiliary Battery
- Stainless Steel Wheel Liners
- Auxiliary Emergency Start Assist Switch on Dash

SAFETY/CONVENIENCE

- **High Mounted Large Taillights***
- **Radius Tinted Windows***
- 30-Amp, 30' Long Shore-Line Power Cord, Compartment Storage
- Breakaway Side Mirrors
- Entry Door w/Screen Door & Deadbolt Lock
- Rear Ladder

STORAGE

- **Large, Multi-Door Storage Bay Compartment Access w/Smaller Storage Wells for Convenient Cargo Organization, Strut Assisted Doors* (26Q)**
- Molded Cross-Link Polyethylene Battery Compartment Container & Lid Easy Access for Battery Maintenance & Electrical Components Check

BODY STRUCTURE

- **Vacu-Bond® Hull Lamination Process***
- Side-Walls Framed with 1½" Aluminum Tubing
- Steel Powder-Coated Bumper
- 26" Radius Entry Door
- Corrosion Resistant Aluminum Tube Hull Framing
- Powder Coated, Steel Running Boards

Fleetwood Exclusives

- **Vacu-Bond® Walls w/Smooth High-Gloss Exterior Tuff-Coat® Fiberglass***
- **Tuff-Ply UV-Resistant Heat/Cold Insulated Roofing Technology***
- **Vacu-Bond® Floor***
- **Complete TuffPEX® Plumbing System***

Options

EXTERIOR

- Exterior Entertainment Center w/AM/FM/CD Player and Auxiliary Speaker, Coax Cable & 12V/110 Receptacles
- Patio Awning Cover
- Dual-Pane Windows (N/A w/Options 086, 808 or 861)
- Power/Heated Side Mirrors
- Dual 6V Deep Cycle Auxiliary Batteries
- Electric Power Entry Step

- Wash Unit w/Dual Control Faucet, Flexible Shower Hose & Water Pump On/Off Switch
- Holding Tank Heater

LIVING ROOM

- 20" Color TV w/Remote & DVD/VCR Combo
- Cabover Entertainment System: 27" TV, Hi-Fi VCR/DVD Combo & Media Storage Center

GALLEY

- Water Filtration System
- **BEDROOM**
- Convertible Sofa w/Table (24D & 26Q)
- Twin Beds (29V)
- Bunk Beds w/Cushions (24D)
- Double Bunk Beds w/Cushions (29V)

THROUGHOUT

- Full Size Spare Tire w/ Carrier
- 15,000 BTU A/C with Heat Pump (N/A on 22B)

[†]The chassis manufacturer recommends the installation of a supplemental brake control system to activate the brakes on the vehicle or trailer you are towing.

- AC Duplex GFI Receptacle on Patio Side
- Amber Porch Light w/Interior Switch

- Insulated Locking Luggage Doors w/Thumb Latch

- Molded Rear Wheel Trim Flares
- Molded Front Transition Trim
- Molded Rear Wall/Ceiling Transition Trim

Weights and Measurements

FORD®/ CHEVY® CHASSIS	22B	23E	24D	26G	26Q	29V	31M
Engine Displacement (Liters)	N/A/6.0	6.8/6.0	6.8/6.0	6.8/N/A	6.8/N/A	6.8/N/A	6.8/N/A
Wheelbase (Inches)	N/A/139	158/159	158/159	176/N/A	176/N/A	198/N/A	218/N/A
GVWR (lbs)¹	N/A/12,300	14,050/12,300	14,050/12,300	14,050/N/A	14,050/N/A	14,050/N/A	14,050/N/A
Front GAWR (lbs)²	N/A/4,300	4,600/4,300	4,600/4,300	4,600/N/A	4,600/N/A	4,600/N/A	4,600/N/A
Rear GAWR (lbs)²	N/A/8,600	9,450/8,600	9,450/8,600	9,450/N/A	9,450/N/A	9,450/N/A	9,450/N/A
Base Weight (lbs)³	N/A/9,300	10,119/9,806	9,990/9,677	10,900/N/A	10,702/N/A	10,850/N/A	11,860/N/A
GCWR (lbs)⁴	N/A/15,800	19,050/15,800	19,050/15,800	19,050/N/A	19,050/N/A	19,050/N/A	17,550/N/A
Hitch Rating Weight (lbs)*	N/A/3,500	5,000/3,500	5,000/3,500	5,000/N/A	5,000/N/A	5,000/N/A	3,500/N/A
Tongue Weight (lbs)*	N/A/350	500/350	500/350	500/N/A	500/N/A	500/N/A	350/N/A
Fuel Capacity (gal)	N/A/35	55/55	55/55	55/N/A	55/N/A	55/N/A	55/N/A

DIMENSIONS AND CAPACITIES

Overall Length⁵ (Ford®/Chevy®)	N/A/23' 1"	24'0"/24'5"	25'0"/25'5"	27'0"/N/A	27'0"/N/A	30'0"/N/A	32'1"/N/A
Overall Height (with A/C)¹	10' 9"	10' 9"	10'9"	10' 9"	10' 9"	10'9"	11'4"
Overall Width (maximum)⁶	102"	102"	102"	102"	102"	102"	102"
Interior Height (maximum)	79"	79"	79"	79"	79"	79"	79"
Interior Width (maximum)	96"	96"	96"	96"	96"	96"	96"
Fresh Water Holding Tank (gal)	30	35	30	35	30	30	30
Grey Water Holding Tank (gal)	36	36	36	35	34	37	37
Black Water Holding Tank (gal)	35	35	35	35	36	37	37
Appliance LPG Tank (gal) (WC)⁷	14	14	14	14	14	14	14
Water Heater Tank (gal)	6	6	6	6	6	6	6

Liquid Weight Reference: Water (gal) = (8.3 lbs/3.8 kgs) Fuel (gal) = (6.1 lbs/2.8 kgs) LPG (gal) = (4.2 lbs/1.9 kgs)

Metric Conversion: Multiply pounds x 0.453 to obtain kilograms. Multiply gallons x 3.785 to obtain liters.

CHASSIS FORD®/CHEVY®

Model: Ford® E450/Chevy® Express

Engine: 6.8L Triton™ V10/6.0L Vortec V8

Torque: 420 lb.-ft. @ 3250 RPM/360 lb.-ft. @ 4000 RPM

Transmission: 5-Speed Automatic w/Overdrive 5R110W-Ford®/
4-Speed Automatic w/Overdrive 4L80E-Chevy®

Alternator Amps: 130 Amp/145 Amp

Horsepower: 305 HP/300 HP

- GVWR (Gross Vehicle Weight Rating): Means the maximum permissible loaded weight of the motor home. The GVWR is equal to or greater than the sum of the unloaded vehicle weight plus the net carrying capacity.
- GAWR (Gross Axle Weight Rating): Means the maximum permissible loaded weight a specific axle is designed to carry.
- Base Weight: Means the estimated weight of the motor home without fuel, options, water, cargo or passengers.
- GCWR (Gross Combined Weight Rating): Means the value specified by the motor home manufacturer as the maximum allowable loaded weight of this motor home with its towed vehicle. Towing and braking capacities may differ. Refer to Fleetwood and chassis manufacturer manuals for complete information.
- Length taken from front bumper to rear bumper (excludes accessories).
- Excludes safety equipment and awnings.
- Tank Manufacturer's listed water capacity (WC). Actual LPG capacity is 80% of water listing as required by the safety code.

† Only if standard.

* The chassis manufacturer recommends the installation of a supplemental brake control system to activate the brakes on the vehicle or trailer you are towing.

N/A = Not Applicable

IMPORTANT— PLEASE READ: Product information, photography and illustrations included in this publication were as accurate as possible at the time of printing. For further product information and changes, please visit our website at www.fleetwoodrv.com or contact your local Fleetwood dealer. Prices, materials, design and specifications are subject to change without notice. All weights, fuel, liquid capacities and dimensions are approximate. Fleetwood has designed its recreational vehicles to provide a variety of uses for customers. Each vehicle features optimal seating, sleeping, storage and fluid capacities. The user is responsible for selecting the proper combination of loads (i.e. occupants, equipment, fluids, cargo, etc.) to ensure that the vehicle's capacities are not exceeded.

What Drives You?

Maybe it's feeling like you're the only one on Earth. Perhaps it's the unique sense of closeness with the great outdoors. Or, it might be the joy that comes from spending quality time with family and friends. Whatever the reason, we know that you have a strong drive to experience everything that comes with spending time on the road. And for more than 50 years, we've shared that passion with you. Because we're RV enthusiasts ourselves, you can see our passion in the vehicles we design and build. Own a Fleetwood, and you'll feel like you're not just traveling, but embarking on an experience unlike any other. Set your own course for adventure and get out there and explore the world around you. Once you do, you'll see what it is that drives us — it's you.

RV OWNERCARE* is a limited one-year/15,000-mile and three-year/50,000-mile structural warranty, whichever occurs first, and it is fully transferable for the first 12 months. RV OWNERCARE is one of the RV industry's most comprehensive programs and includes systems, appliances, components and construction, with no deductible and no service charge. RV OWNERCARE coverage is provided from a company that will be around in the future to service your needs. See your nearest Fleetwood dealer for a full explanation of benefits and restrictions.

CLUB FLEETWOOD As a Fleetwood owner, you're eligible to become a member of our owners' group, Club Fleetwood. It's a perfect way to meet other Fleetwood owners who love to travel to beautiful resorts and vacation spots all across America. Call (877) 577-2560 and join the fun! Or visit www.fleetwood.com/clubs to learn more.

FLEETWOODRV.COM To locate a dealer near you, visit our website or call 1-800-444-4905. We can also be contacted at Fleetwood Customer Relations, P.O. Box 7638, Riverside, CA 92513-7638.

IMPORTANT—PLEASE READ Product information, photography and illustrations included in this publication were as accurate as possible at the time of printing. For further product information and changes, please visit our website at www.fleetwoodrv.com or contact your local Fleetwood dealer. Prices, materials, design and specifications are subject to change without notice. All weights, fuel, liquid capacities and dimensions are approximate. Fleetwood has designed its recreational vehicles to provide a variety of uses for customers. Each vehicle features optimal seating, sleeping, storage and fluid capacities. The user is responsible for selecting the proper combination of loads (i.e. occupants, equipment, fluids, cargo, etc.) to ensure that the vehicle's capacities are not exceeded.

Your local Fleetwood dealer is:



www.fleetwoodrv.com

*For complete info see your Fleetwood dealer. © 2004. Fleetwood Enterprises, Inc. Printed in the USA. Inventory control number JA05F2 10/04.

