



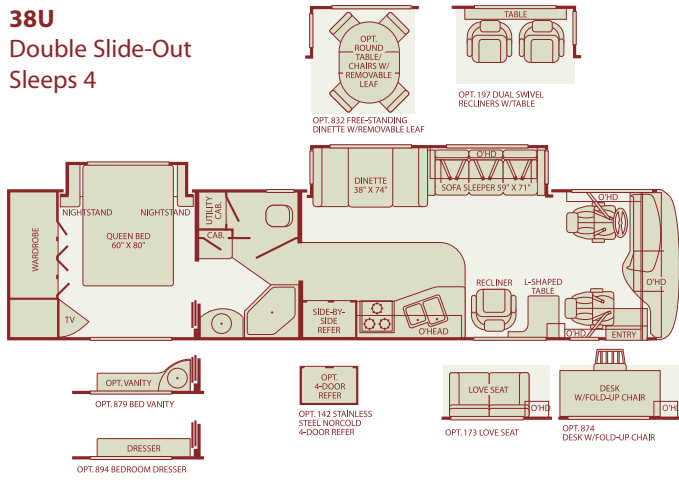
{Providence}

PROVIDENCE Class A Diesel 2005

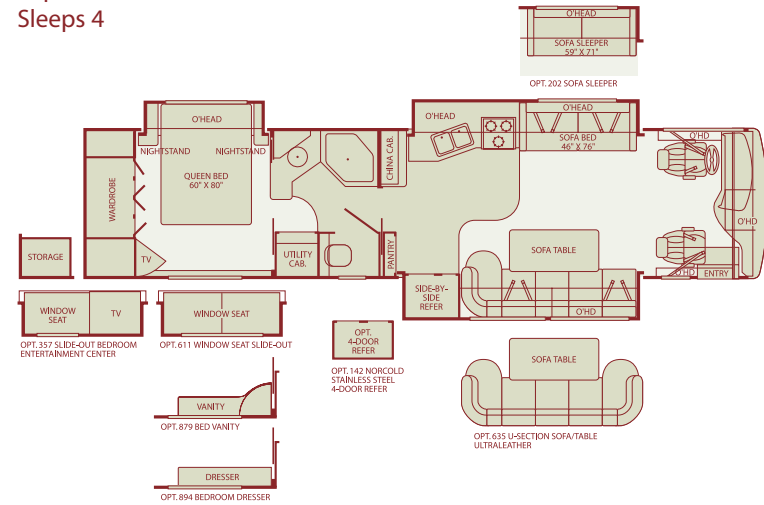


Floor Plans

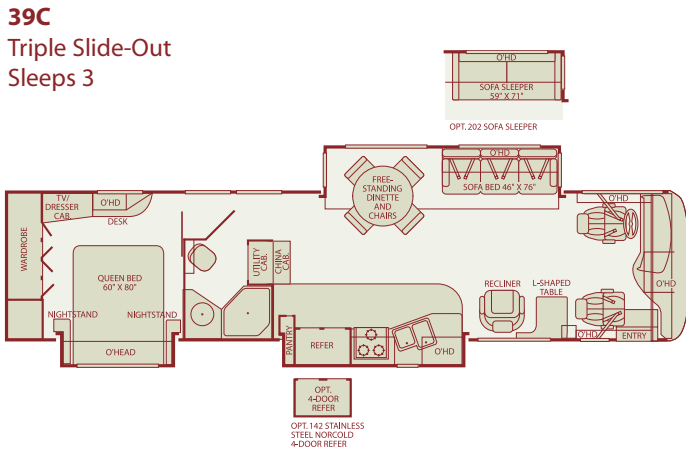
38U
Double Slide-Out
Sleeps 4



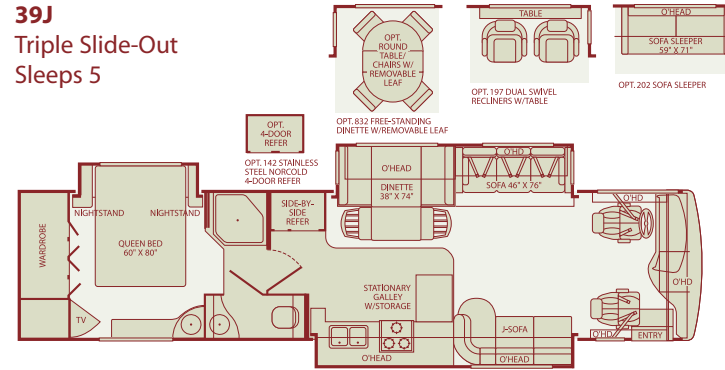
39A
Triple Slide-Out
Sleeps 4



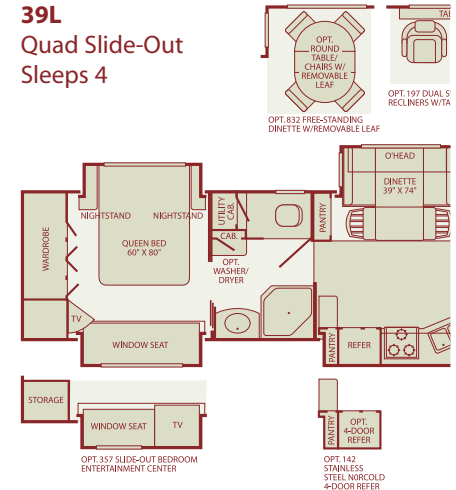
39C
Triple Slide-Out
Sleeps 3



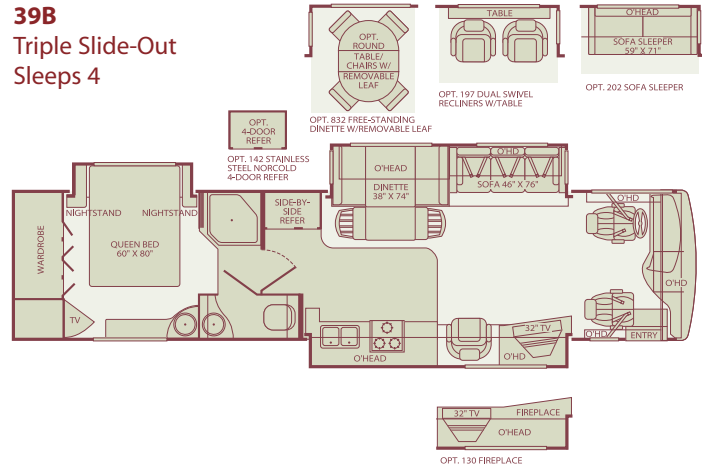
39J
Triple Slide-Out
Sleeps 5



39L
Quad Slide-Out
Sleeps 4



39B
Triple Slide-Out
Sleeps 4



Inter-locking Ceiling-to-Sidewall Connection

Inter-locking Floor-to-Sidewall Connection

Vacu-Bond® Sidewall Construction

Setting the Standard in Motor Home Quality.

Fleetwood® prototypes are exposed to thousands of miles of durability testing. Those components that don't survive are redesigned until they do. This sets our standard in safety and durability.

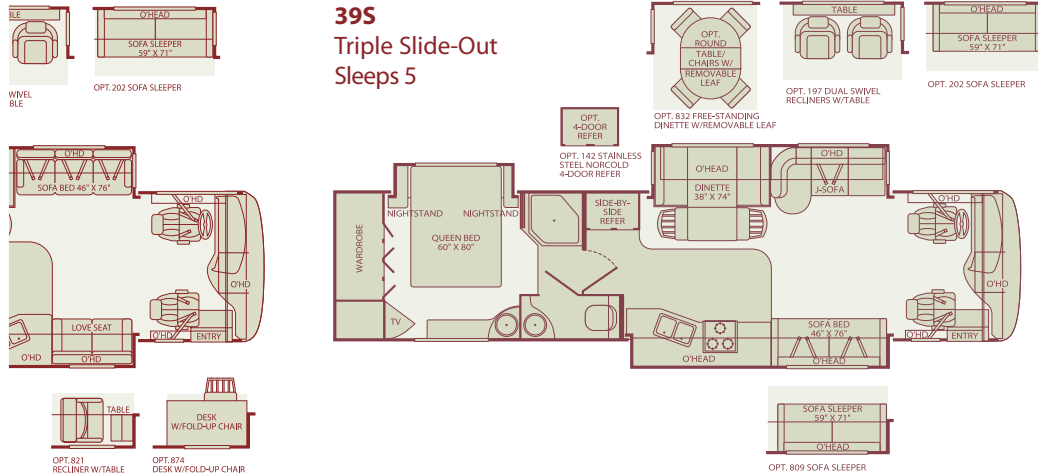
Fleetwood's patented Power Platform supports the body with a rigid frame that reinforces the chassis to make it even stronger. This allows Fleetwood to offer triple and quad slide-outs.

For each outer wall, Fleetwood uses one seamless, solid piece of its exclusive Tuff-Coat® fiberglass composite. It resists UV rays, cracks and impacts. Our products look newer longer and that's a big plus at resale time.

To assure a strong, weather-resistant structure, Fleetwood Vacu-bonds® all sidewalls, floors and ceilings to a durable aluminum or steel frame. The Vacu-bond® process is unmatched by many competitors.

Fleetwood sinks and shelves are designed to handle full-size kitchenware. Few competitors can say the same.

39S
Triple Slide-Out
Sleeps 5



Seatbelt configuration may vary depending on options chosen. Sleeping capacity based on standard layout. Optional furniture may increase or decrease sleeping capacity.

Standard Features

Interior

THROUGHOUT

- **84" Interior Ceiling Height***
- **Whole-Coach Water Filtration System***
- **Dual Roof-Mounted A/C High Efficiency w/Solar Panel on Front A/C***
- **Solid Surface Countertops and Sink Covers***
- 20,000 BTU/25,000 (Dual) Furnace
- 10-Gallon, Quick-Recovery Water Heater w/Direct Spark Ignition (Gas/Electric)
- Water Heater Bypass System
- Demand Water Pump w/Filter
- Plush Wall-to-Wall Carpet w/Carpet Pad

DRIVER CONVENIENCE

- **High-Output Auto A/C Heater Combo***
- **Power Sun Visors***
- Soft-Surface Automotive Dash w/Area for Laptop GPS (Laptop & GPS Not Included)
- Radio Switch—Main/Auxiliary Power
- Passenger Seat w/Power Foot Rest & Armrest w/Integrated Magazine Rack
- Cruise Control
- Battery Shut-Off Switch
- AM/FM Radio w/CD/Cassette Player
- Backlit Switches & Gauges

LIVING ROOM

- **Ultraleather Sofa Bed***
- **Panasonic® 5 Disc DVD Home Theater Sound System w/Hidden Surround-Sound Speakers***
- **Easy-Sweep Laminate Flooring at Entry***
- **Space Saving Coffee Table***
- Flexsteel® Residential Seat Styling
- 27" Panasonic® Stereo TV in Overhead (32" on 39B)
- J-Lounge Ultraleather Sofa (Select Models)
- TV Antenna
- Panasonic® Hi-Fi VCR

GALLEY

- **Deluxe Ball Bearing, Full Extension Drawer Guides***
- **Window Over Sink***
- 12 cu. ft. Side-by-Side Stainless-Steel (No Smudge) Dometic® Refrigerator
- 1.4 cu. ft. Convection Microwave Oven w/Stainless-Steel Front
- 3-Burner, High-Output Cooktop w/Sealed Burners
- Light/Power Range Hood
- Solid Surface Range Cover
- Coffee Maker
- Single-Lever Faucet w/Retractable Wand
- Fan-Tastic® Power Roof Vent
- Laminate Floor Tile
- Large, Double Stainless-Steel Sink
- Six-Person Pull-Out Dinette Table (Select Models)

BEDROOM

- **Ventilated Rear Wardrobe w/Cedar Lining, Carpeted Floor & Wire Organizer***
- **Cabinet Storage above the Bed***
- **Restonic® Pillow Top Innerspring Mattress***
- Bedroom Radio & Speakers
- Mirrored Wardrobe Doors

BATHROOM

- **Cabinet Toe Kicks***
- Porcelain Toilet w/Water Saver
- Stainless-Steel Sink
- Coordinated Bath Accessories
- Molded Shower Enclosure w/Skylight
- Hardwood Bath Door/Trims
- Fan-Tastic® Power Roof Vent

- Fire Extinguisher
- Crown Molding w/Decorative Corner Caps
- Vinyl Padded Ceiling
- Day/Night Pleated Shades
- Smoke Detector/Alarm
- LPG Detector/Alarm
- CO Detector/Alarm

- Tilt & Telescoping Steering Wheel
- Driver/Passenger Ultraleather Captain's Chairs w/Reclining Back/Slide Controls/Power/Heated/Adjustable Arms
- Auxiliary Start Circuit

- Ultraleather Swivel Recliner Free Standing (Select Models)
- DSS/Stationary Auto Locating Satellite Dish (Covered)
- Telephone Jack

- Raised-Panel Cabinet Doors
- Glass Panel Cabinet Doors (Select Cabinets)
- Adjustable Cabinet Shelves (Select Cabinets)
- Slide-Out Dinette Bins w/Locks
- Under-Galley Shelving & Waste Basket
- Soap & Lotion Dispenser

- Telephone Jack
- 20" Panasonic® TV w/Swivel
- Bedspread w/Decor Pillows
- Wardrobe Lighting

- Laminate Floor Tile
- Lighted Assist Handle

Exterior

THROUGHOUT

- **Full Body Paint***
- **Choice of Three Colorway Graphics***
- **4-Point Automatic Hydraulic Levelers***
- **Weather Pro Power Awnings*** (Patio Awning Includes Wind Sensor)
- 7.5kW Onan® Quiet Diesel Generator
- Dual Pane Windows
- Fiberglass Front Quarter Panels
- Fiberglass Front/Rear Cap w/High-Mounted Taillights
- Fiberglass Rear Wheel Well Trim
- Torque Windows in Bedroom
- Utility Compartment w/Exterior Shower
- Remote/Heated Rear View Mirrors

AUTOMOTIVE

- **350-HP Cat® C7 Engine w/Rear-Mounted Radiator***
- **Spartan® Chassis***
- **Dual Fuel Fill*** (One on Each Side)
- Large Bonded-in Windshield
- Rear-Vision Camera
- Aluminum Rims

SAFETY / CONVENIENCE

- **Lighted Entry Assist Handle***
- Entry Door w/Deadbolt Latch
- Power Entry Step
- Keyless Entry
- Doorside Patio Receptacle

STORAGE

- **EZ-Store Compartment on Living Area Slide-Outs***
- Spare Tire Compartment (Spare Tire Not Included)
- 10,000-lb. Weight-Distributing Hitch Receiver w/7-Point Electrical Hook-Up†
- Valve Extenders
- Underhood Utility Light
- Mud Flaps
- Fog Lamps

BODY STRUCTURE

- **Aluminum Interlocking Floor/Wall/Ceiling Framing***
- Radius Roof w/Ducted A/C
- Roof Ladder
- 20' Sewer Hose
- Park Cable Receptacle
- Four 6V/Deep-Cycle House Batteries

Options

THROUGHOUT

- Stereo AM/FM w/6 Disc CD Player with Sirius® Satellite Radio (w/One-Year Subscription)
- Washer/Dryer
- Central Vacuum System
- CSA Package
- Spotlight w/Remote Control
- Heat Pumps

GALLEY

- 3-Burner Range w/Oven
- Stainless-Steel 4-Door Norcold® Refrigerator
- Free-Standing Dinette w/Chairs (N/A 39A)

LIVING ROOM

- Recliner w/Table (39L)
- Dual Free-Standing Ultraleather Recliners
- Ultraleather Love Seat w/Ottoman (38U & 39A)
- Ultraleather Sofa Sleeper
- Fireplace w/32" TV (39B)

EXTERIOR

- Entertainment Center w/20" TV and Stereo (Select Models)
- Pull-Out Grill and Kitchenette (Select Models)

- Awning Rails/Drip Molding
- Dual Battery Charge Control
- Front Protective Mask
- Water Pump Switch (3 Locations)
- 120V/12V AC/DC Converter w/2000-Watt Inverter
- 50-amp Service
- 120V/12V Wire Raceways

- Single Motor Denso Windshield Wipers w/Wet Arm

† The chassis manufacturer recommends the installation of a supplemental brake-control system to activate the brakes on the vehicle or trailer you are towing.

- Toilet Tank San-T-Flush™ System
- Central Electrical Panel
- Porch Light (Doorside)

- Hidden Lift Strut Supports
- Lighted Polyethylene Luggage Compartments

- Color Coordinated Royal Tuff-Ply Roof

BEDROOM

- Restonic® Rest-On-Air Dual-Control Mattress
- Bedroom Entertainment Center w/27" TV and Home Theatre (39L & 39A)
- Bedroom Vanity w/Sink (38U & 39A)
- Bedroom Dresser (38U & 39A)
- Full-Length Bedroom Dresser (38U)
- Bedroom Window Seat Slide-Out (39A)
- Desk (38U & 39L)

Fleetwood Exclusives

- **Strong Power Platform Construction***
- **Energy Management System (EMS) w/Soft-Start***
- **Vacu-Bond® Upper/Lower Floors***
- **Vacu-Bond® Walls w/Smooth High-Gloss Exterior Tuff-Coat® Fiberglass***
- **Complete TuffPEX® Plumbing System***

* Denotes Fleetwood's Key Features

Weights and Measurements

SPARTAN® CHASSIS	38U	39A	39B	39C	39J	39L	39S
Engine Displacement (Liters)	7.2	7.2	7.2	7.2	7.2	7.2	7.2
Wheelbase (Inches)	242	252	252	252	252	252	252
GVWR (lbs.)¹	31,000	31,000	31,000	31,000	31,000	31,000	31,000
Front GAWR (lbs.)²	12,000	12,000	12,000	12,000	12,000	12,000	12,000
Rear GAWR (lbs.)²	19,000	19,000	19,000	19,000	19,000	19,000	19,000
GCWR (lbs.)⁴	41,000	41,000	41,000	41,000	41,000	41,000	41,000
Base Weight (lbs.)³	21,555	22,605	22,605	22,605	22,605	22,900	22,605
Hitch Rating Weight (lbs.)*	10,000	10,000	10,000	10,000	10,000	10,000	10,000
Tongue Weight (lbs.)*	1,000	1,000	1,000	1,000	1,000	1,000	1,000
Fuel Capacity (gal.)	100	100	100	100	100	100	100

DIMENSIONS AND CAPACITIES

Overall Length⁵	38' 2"	39' 2"	39' 2"	39' 2"	39' 2"	39' 2"	39' 2"
Overall Height (with A/C)	12' 8"	12' 8"	12' 8"	12' 8"	12' 8"	12' 8"	12' 8"
Overall Width (maximum)⁶	102"	102"	102"	102"	102"	102"	102"
Interior Height (maximum)	84"	84"	84"	84"	84"	84"	84"
Interior Width (maximum)	96"	96"	96"	96"	96"	96"	96"
Fresh Water Holding Tank (gal.)	86	86	86	84	86	86	86
Grey Water Holding Tank (gal.)	50	50	50	50	50	50	50
Black Water Holding Tank (gal.)	50	50	50	50	50	50	50
Appliance LPG Tank (gal.) (WC)⁷	38	38	38	38	38	38	38
Water Heater Tank (gal.)	10	10	10	10	10	10	10

Liquid Weight Reference: Water (gal.) = (8.3 lbs./3.8 kgs.) Fuel (gal.) = (7.1 lbs./3.2 kgs.) LPG (gal.) = (4.2 lbs./1.9 kgs.)

Metric Conversion: Multiply pounds x 0.453 to obtain kilograms. Multiply gallons x 3.785 to obtain liters.

CHASSIS

Frame: Spartan® Mountain Master

Engine: Cat® C7 350 HP

Torque: 860 lb.-ft.@ 1440 RPM

Transmission: Allison® 3000 MH, 6-Speed w/Electronic Shifter

Alternator Amps: 160-Amp Delco

Tires: Goodyear® 275/70R 22.5H

1. GVWR (Gross Vehicle Weight Rating): Maximum permissible loaded weight of the motor home. The GVWR is equal to or greater than the sum of the unloaded vehicle weight plus the net carrying capacity.

2. GAWR (Gross Axle Weight Rating): Maximum permissible loaded weight a specific axle is designed to carry.

3. Base Weight: Estimated weight of the motor home without fuel, options, water, cargo or passengers.

4. GCWR (Gross Combined Weight Rating): Value specified by the motor home manufacturer as the maximum allowable loaded weight of this motor home with its towed vehicle. Towing and braking capacities may differ. Refer to Fleetwood and chassis manufacturer manuals for complete information.

5. Length taken from front bumper to rear bumper (excludes accessories).

6. Excludes safety equipment and awnings.

7. Tank manufacturer's listed water capacity (WC). Actual LPG capacity is 80% of water listing as required by the safety code.

* The chassis manufacturer recommends the installation of a supplemental brake-control system to activate the brakes on the vehicle or trailer you are towing.

IMPORTANT— PLEASE READ: Product information, photography and illustrations included in this publication were as accurate as possible at the time of printing. For further product information and changes, please visit our website at www.fleetwoodrv.com or contact your local Fleetwood dealer. Prices, materials, design and specifications are subject to change without notice. All weights, fuel, liquid capacities and dimensions are approximate. Fleetwood has designed its recreational vehicles to provide a variety of uses for customers. Each vehicle features optimal seating, sleeping, storage and fluid capacities. The user is responsible for selecting the proper combination of loads (i.e. occupants, equipment, fluids, cargo, etc.) to ensure that the vehicle's capacities are not exceeded.

What Drives You?

Maybe it's feeling like you're the only one on Earth. Perhaps it's the unique sense of closeness with the great outdoors. Or, it might be the joy that comes from spending quality time with family and friends. Whatever the reason, we know that you have a strong drive to experience everything that comes with spending time on the road. And for more than 50 years, we've shared that passion with you. Because we're RV enthusiasts ourselves, you can see our passion in the vehicles we design and build. Own a Fleetwood, and you'll feel like you're not just traveling, but embarking on an experience unlike any other. Set your own course for adventure and get out there and explore the world around you. Once you do, you'll see what it is that drives us — it's you.

RV OWNERCARE* is a limited one-year/15,000-mile and three-year/50,000-mile structural warranty, whichever occurs first, and it is fully transferable for the first 12 months. RV OWNERCARE is one of the RV industry's most comprehensive programs and includes systems, appliances, components and construction, with no deductible and no service charge. RV OWNERCARE coverage is provided from a company that will be around in the future to service your needs. See your nearest Fleetwood dealer for a full explanation of benefits and restrictions.

CLUB FLEETWOOD As a Fleetwood owner, you're eligible to become a member of our owners' group, Club Fleetwood. It's a perfect way to meet other Fleetwood owners who love to travel to beautiful resorts and vacation spots all across America. Call (877) 577-2560 and join the fun! Or visit www.fleetwood.com/clubs to learn more.

FLEETWOODRV.COM To locate a dealer near you, visit our website or call 1-800-444-4905. We can also be contacted at Fleetwood Customer Relations, P.O. Box 7638, Riverside, CA 92513-7638.

www.fleetwoodrv.com

*For complete info see your Fleetwood dealer. © 2004. Fleetwood Enterprises, Inc.
Printed in the USA. Inventory control number PRO05F2 10/04.

IMPORTANT—PLEASE READ Product information, photography and illustrations included in this publication were as accurate as possible at the time of printing. For further product information and changes, please visit our website at www.fleetwoodrv.com or contact your local Fleetwood dealer. Prices, materials, design and specifications are subject to change without notice. All weights, fuel, liquid capacities and dimensions are approximate. Fleetwood has designed its recreational vehicles to provide a variety of uses for customers. Each vehicle features optimal seating, sleeping, storage and fluid capacities. The user is responsible for selecting the proper combination of loads (i.e. occupants, equipment, fluids, cargo, etc.) to ensure that the vehicle's capacities are not exceeded.

Your local Fleetwood dealer is:

tread lightly!
LEAVING A GOOD IMPRESSION

