



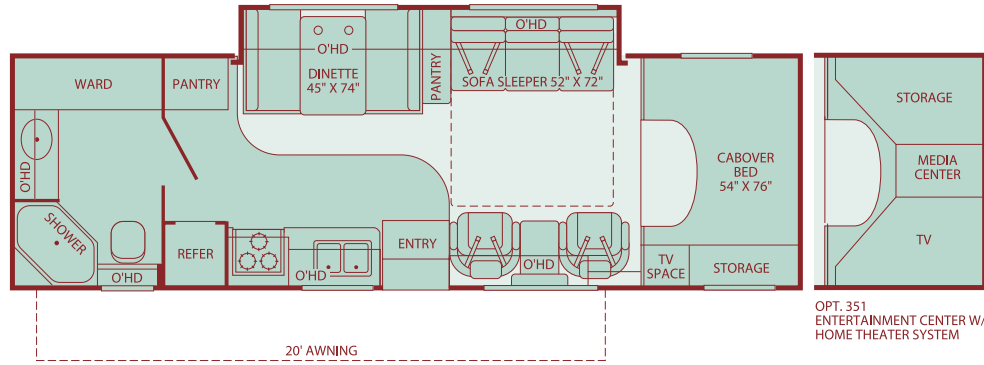
{Tioga SL}



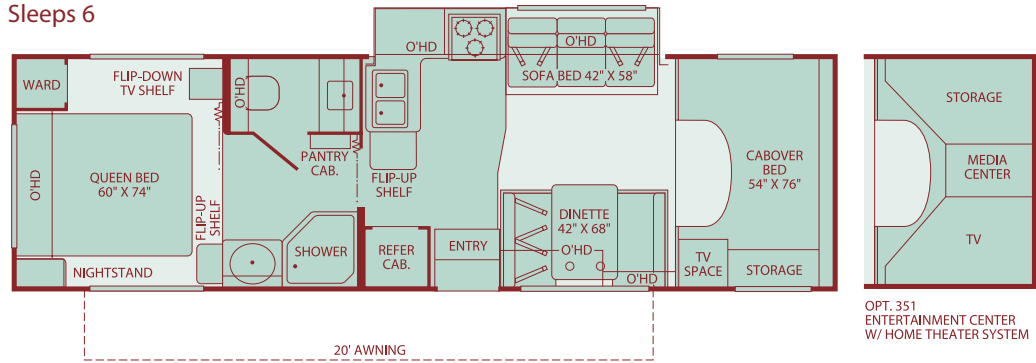
TIOGA SL CLASS C 2005

Floor Plans

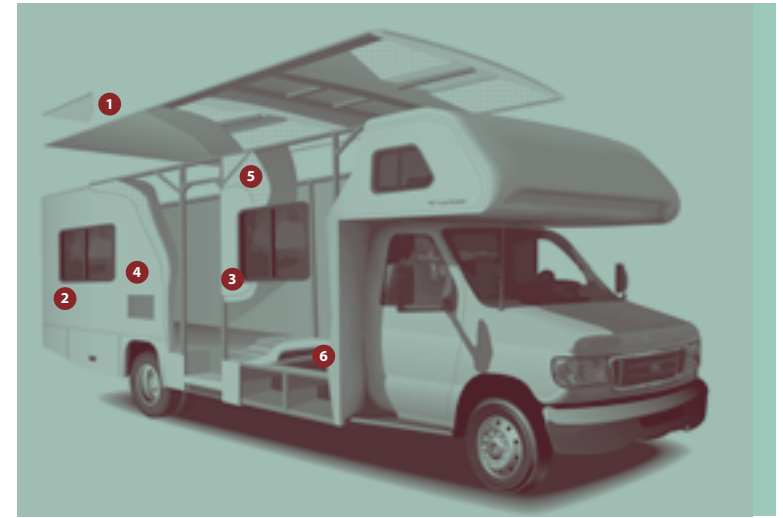
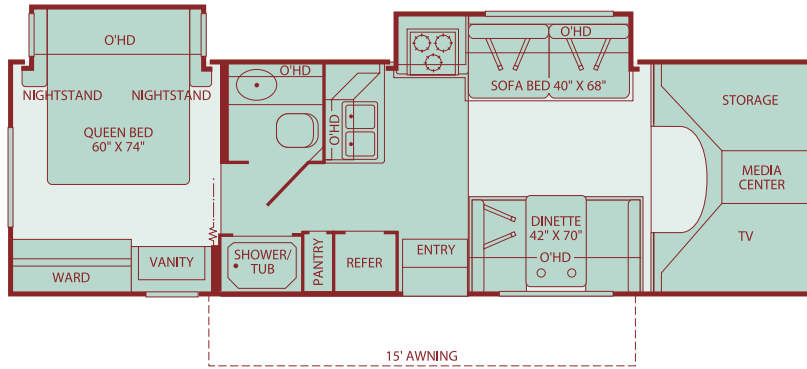
29S
Single Slide-Out
Sleeps 5



31K
Single Slide-Out
Sleeps 6



30U
Double Slide-Out
Sleeps 4



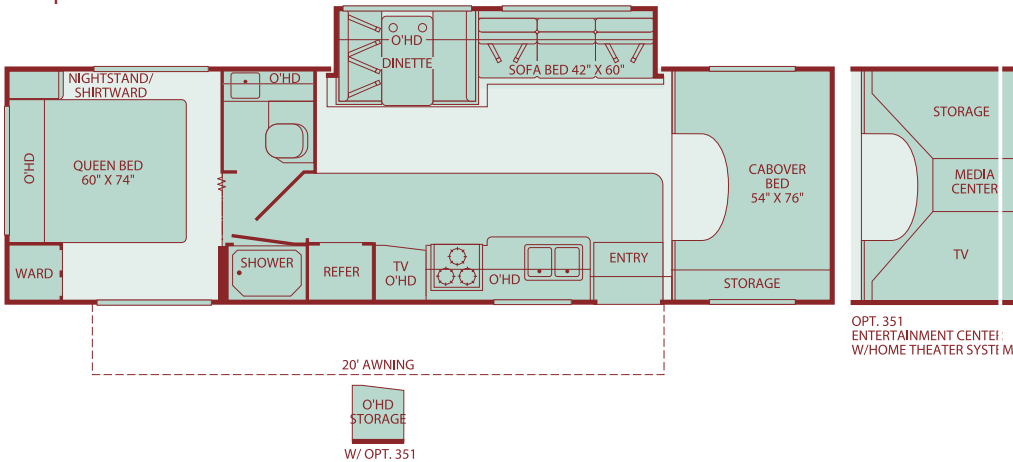
Setting the Standard in Motor Home Quality.

Fleetwood® prototypes are exposed to thousands of miles of durability testing. Those components that don't survive are redesigned until they do. This sets our standard in safety and durability.

- 1** Fleetwood's Tuff-Ply roofing technology is one of the most durable roofing materials on the market and also resists radiation by reflecting sunlight (reduces chalking). White roof material minimizes heat build-up, keeping the temperature cool and comfortable.
- 2** Reliable TuffPEX® plumbing runs throughout each vehicle creating a durable seal on all internal tubing. TuffPEX® assures water flow and functions in the coldest of temperatures. The TuffPEX® system is an industry leader in quality plumbing.
- 3** For each outer wall, Fleetwood uses one seamless, solid piece of its exclusive Tuff-Coat® fiberglass composite. It resists UV rays, cracks and impacts. Our products look newer longer and that's a big plus at resale time.
- 4** To assure a strong, weather-resistant structure, Fleetwood Vacu-bonds® all sidewalls, floors and ceilings to a durable aluminum or steel frame. The Vacu-bond® process is unmatched by many competitors.
- 5** High Density block foam insulation is precisely cut to fit between framing members. This insures maximum insulation throughout the vehicle.
- 6** Aluminum constructed floor support trusses are laminated with a moisture resistant and easy to clean fiberglass skin. This helps to further insulate and provides sound reduction.

Drawings are for illustrative purpose only to highlight aspects of motor home construction. Actual motor home design depends on model and is subject to change.

31W
Single Slide-Out
Sleeps 5



Seatbelt configuration may vary depending on options chosen.
Sleeping capacity based on standard layout. Optional furniture may increase or decrease sleeping capacity.

Standard Features

Interior

THROUGHOUT

- **Quality Constructed Furniture by Flexsteel®***
- **Deluxe Ball Bearing Full-Extension Drawer Guides***
- Deluxe Interior Decor Options
- Carpet w/Pad & Vinyl Flooring in Galley & Lavy
- Lap Belts at Selected Living Area Seating Positions
- Mortise & Tenon Doors w/Hardwood Frames
- 6 Gallon Water Heater, Electronic Ignition, LP Gas
- Large Entry Assist Handle

DRIVER CONVENIENCE

- **In Dash AM/FM Radio w/CD and Cassette Player***
- **Driver/Passenger Ultraleather Flexsteel® Adjustable/Reclining Bucket Seats w/Armrest***
- **3-Point Seat Belts: Driver and Passenger Bucket Seats***

LIVING ROOM

- **Sofa w/Armrests & Snack Tray/Convertible for Sleeping***
- **Day/Night Pleated Shades***
- **Large Viewing Window at Dinette***

GALLEY

- **Drawer Boxes w/Real Wood Construction***
- **Kitchen Convenience Package: Spice Rack, Knife Holder, Paper Towel Holder, Sink Cover/Cutting Board, Silverware Drawer***

BEDROOM

- **Night Pleated Shades***
- **Innerspring Mattress***
- Queen Bed (N/A 29S)

BATHROOM

- **Skylight/Roof Vent w/12V Fan***
- **Bath Door w/Residential Passage Lock and Towel Bars***
- Molded ABS Shower Surround/Pan

- Monitor Panel: Auxiliary & Chassis Battery Condition Check, Holding Tank Levels, Fresh Water Tank Level, LP Gas Tank Level, All Level Readings in ¼ Increments, Direct Spark Ignition Water Heater Switch w/Lighted Indicator, Water Pump Switch w/On Indicator Light, Battery Disconnect Switch, Generator Start/Stop Switch & Hour Meter
- 15,000 BTU/Ducted Air Conditioner
- 30,000 BTU Furnace, Auto-Ignition, Ducted, Wall Mtd. Thermostat
- 12V Water Pump, Demand Operation

• Custom Dash Appliques*

- 54" X 76" Cabover Bed w/ Patented Slider Bunk Operation, Privacy Curtain, Roof Vent, Ladder & Sliding Side Windows
- Driver/Passenger Airbag Supplemental Restraint System

• Dinette, Convertible for Sleeping (N/A 31W)*

- Telephone/Modem Jack w/Exterior Jack Input
- Ceiling Lights w/Wall Switches

• Water Filtration System*

- **Microwave/Convection Oven***
- Dometic® 8 cu. ft. Refrigerator/Freezer
- 3-Burner Range w/High-Output/ Piezo Ignitor & Oven

- TV Shelf w/12V & Cable Jacks, AC Receptacle
- Roof Vent

- Shower Head w/Flexible Hose Extension

- Large Sink w/Dual Control Faucet
- Wall Mounted Mirror

- Auxiliary Battery, Disconnect Switch on Monitor Panel
- Water Heater Bypass Valve—Fresh Water System Winterization
- Water Pump Controller, On/Off Switches at Galley, Lavy & Optional Exterior Wash Unit
- AC/DC Load Center w/12V Converter/Battery Charger
- LPG Detector/Alarm
- Smoke Detector/Alarm
- CO Detector/Alarm
- 10 ABC Fire Extinguisher

- Coach Support Systems

- Power Windows & Door Locks
- 4 Speakers, (2 in Cab Doors, 2 Ceiling Mounted)

- 2 Cup-Holders in Dinette
- Swivel Base Lounge Chair w/Dual Lock Position
- 20" Color TV w/Remote & DVD/VCR Player

- Residential Size Double Sink Bowl
- Single Lever Control Faucet
- Rangehood w/Light & Fan
- Flip-Top Extension (Select Models)
- Decorative Wall Border
- Soap Dispenser

- Decorative Reading Lights
- Bedspread w/Pillow Shams

- Medicine Cabinet w/ Wood Construction
- Marine Style Toilet w/Tissue Roll Holder

Exterior

THROUGHOUT

- **Laminated Aluminum Basement Truss System***
- **Outstanding Exterior Graphics and Styling***
- **Patio Awning***

AUTOMOTIVE

- **Ford® E450 Chassis, 6.8L Triton™ V10 w/305 hp, Dual Airbags, 4W Anti-Lock Brakes, Automatic 5-Speed Transmission w/Overdrive***
- **Rear Fuel Fill***
- **Alcoa Aluminum Wheels***
- **Full Size Spare Tire w/ Carrier***
- Dual 6V Deep Cycle Auxiliary Batteries

SAFETY / CONVENIENCE

- **High Mounted Large Taillights***
- **Radius Tinted Windows***
- **Power Entry Step***
- **Breakaway Side Mirrors w/Power Adjust & Heat Control***
- Rear Ladder

STORAGE

- **Painted Aluminum Skin Luggage Doors w/Strut Assist and Paddle Latches***

BODY STRUCTURE

- **One Piece Crowned Roof w/ Tuff-Ply Covering***
- **Vacu-bond® Hull Lamination Process***
- **Powder Coated Steel Running Boards with Custom Molded Wheel Trims***

- **High-Gloss Tuff-Coat® Smooth Fiberglass Exterior***
- Onan® 4.0kW Microquiet Generator
- Large 1" (Inside Diameter) Water Tank Drain

- Auxiliary Emergency Start Assist Switch on Dash
- Chassis Supplied: Heating & Air Conditioning, Cigarette Lighter/12V Power Supply, Intermittent Windshield Wipers, Power Steering w/Tilt Wheel, Cruise Control, Sunvisors (2), Dome Light, Beverage Cup-Holders, Map Pocket

- GFI Circuit Protection in Galley, Lavy, Patio Receptacles
- 30-Amp, 30' Long Shore-Line Power Cord, Compartment Storage
- Entry Door w/Screen Door & Deadbolt Lock

- **Stainless Steel Hinges on Exterior Luggage Doors***
- **EZ Store Slide-Out Storage* (Select Models)**

- **One-Piece Molded Fiberglass Front-End Cap***
- Molded Rear Wheel Trim Flares
- Molded Rear Wall/Ceiling Transition Trim
- Side-Walls Framed w/1½" Aluminum Tubing

- Sewer Hose Compartment Located Near Holding Tank Dump Valves
- City Water Hook-Up
- EZ Glide® Slide-Out System

- Stainless Steel Wheel Liners
- 7-Pin Hitch Plug†

† The chassis manufacturer recommends the installation of a supplemental brake control system to activate the brakes on the vehicle or trailer you are towing.

- AC Duplex GFI Receptacle on Patio Side
- Amber Porch Light w/Interior Switch

- Molded Cross-Link Polyethylene Battery Compartment Container & Lid Easy Access for Battery Maintenance & Electrical Components Check

- Heated Holding Tanks in Basement Compartments
- Steel Powder-Coated Rear Bumper
- Corrosion Resistant Aluminum Tube Hull Framing

Options

THROUGHOUT

- 15,000 BTU A/C with Heat Pump
- LCD Back-up Monitor w/Audio

LIVING ROOM

- Cab-Over Entertainment System: 27" TV, Hi-Fi VCR and DVD Player w/ Home Theater Sound & Media Storage Center

EXTERIOR

- Exterior Entertainment Center w/AM/FM/CD Player and Auxiliary Speaker, Coax Cable & 12V/110 Receptacles

Fleetwood Exclusives

- **Vacu-Bond® Walls w/Smooth High-Gloss Exterior Tuff-Coat® Fiberglass***

- **Vacu-bond® Floor***
- **Tuff-Ply UV-Resistant Heat/Cold Insulated Roofing Technology***

- **Complete TuffPEX® Plumbing System***

* Denotes Fleetwood's Key Features

Weights and Measurements

FORD® CHASSIS	29S	30U	31K	31W
Engine Displacement (Liters)	6.8	6.8	6.8	6.8
Wheelbase (Inches)	198	206	214	214
GVWR (lbs) ¹	14,050	14,050	14,050	14,050
Front GAWR (lbs) ²	4,600	4,600	4,600	4,600
Rear GAWR (lbs) ²	9,450	9,450	9,450	9,450
Base Weight (lbs) ³	11,900	12,250	12,000	12,000
GCWR (lbs) ⁴	17,550	17,550	17,550	17,550
Hitch Rating Weight (lbs)*	3,500	3,500	3,500	3,500
Tongue Weight (lbs)*	350	350	350	350
Fuel Capacity (gal)	55	55	55	55

DIMENSIONS AND CAPACITIES

Overall Length ⁵	30' 1"	30' 6"	31' 4"	31' 4"
Overall Height (with A/C) [†]	11' 4"	11' 4"	11' 4"	11' 4"
Overall Width (maximum) ⁶	102"	102"	102"	102"
Interior Height (maximum)	79"	79"	79"	79"
Interior Width (maximum)	96"	96"	96"	96"
Fresh Water Holding Tank (gal)	30	30	30	35
Grey Water Holding Tank (gal)	37	35	44	35
Black Water Holding Tank (gal)	49	35	30	35
Appliance LPG Tank (gal) (WC) ⁷	14	14	14	14
Water Heater Tank (gal)	6	6	6	6

Liquid Weight Reference: Water (gal) = (8.3 lbs/3.8 kgs) Fuel (gal) = (6.1 lbs/2.8 kgs) LPG (gal) = (4.2 lbs/1.9 kgs)

Metric Conversion: Multiply pounds x 0.453 to obtain kilograms. Multiply gallons x 3.785 to obtain liters.

CHASSIS

Model: Ford® E450 Chassis

Engine: 6.8L Triton™ V10

Torque: 420 lb.-ft. @ 3250 RPM

Transmission: 5-Speed Automatic w/Overdrive 5R110W

Alternator Amps: 130 Amp

Horsepower: 305HP

- GVWR (Gross Vehicle Weight Rating): Means the maximum permissible loaded weight of the motor home. The GVWR is equal to or greater than the sum of the unloaded vehicle weight plus the net carrying capacity.
 - GAWR (Gross Axle Weight Rating): Means the maximum permissible loaded weight a specific axle is designed to carry.
 - Base Weight: Means the estimated weight of the motor home without fuel, options, water, cargo or passengers.
 - GCWR (Gross Combined Weight Rating): Means the value specified by the motor home manufacturer as the maximum allowable loaded weight of this motor home with its towed vehicle. Towing and braking capacities may differ. Refer to Fleetwood and chassis manufacturer manuals for complete information.
 - Length taken from front bumper to rear bumper (excludes accessories).
 - Excludes safety equipment and awnings.
 - Tank Manufacturer's listed water capacity (WC). Actual LPG capacity is 80% of water listing as required by the safety code.
- † Only if standard.
- * The chassis manufacturer recommends the installation of a supplemental brake control system to activate the brakes on the vehicle or trailer you are towing.

IMPORTANT — PLEASE READ: Product information, photography and illustrations included in this publication were as accurate as possible at the time of printing. For further product information and changes, please visit our website at www.fleetwoodrv.com or contact your local Fleetwood dealer. Prices, materials, design and specifications are subject to change without notice. All weights, fuel, liquid capacities and dimensions are approximate. Fleetwood has designed its recreational vehicles to provide a variety of uses for its customers. Each vehicle features optimal seating, sleeping, storage and fluid capacities. The user is responsible for selecting the proper combination of loads (i.e. occupants, equipment, fluids, cargo, etc.) to ensure that the vehicle's capacities are not exceeded.

What Drives You?

Maybe it's feeling like you're the only one on Earth. Perhaps it's the unique sense of closeness with the great outdoors. Or, it might be the joy that comes from spending quality time with family and friends. Whatever the reason, we know that you have a strong drive to experience everything that comes with spending time on the road. And for more than 50 years, we've shared that passion with you. Because we're RV enthusiasts ourselves, you can see our passion in the vehicles we design and build. Own a Fleetwood, and you'll feel like you're not just traveling, but embarking on an experience unlike any other. Set your own course for adventure and get out there and explore the world around you. Once you do, you'll see what it is that drives us — it's you.

RV OWNERCARE* is a limited one-year/15,000-mile and three-year/50,000-mile structural warranty, whichever occurs first, and it is fully transferable for the first 12 months. RV OWNERCARE is one of the RV industry's most comprehensive programs and includes systems, appliances, components and construction, with no deductible and no service charge. RV OWNERCARE coverage is provided from a company that will be around in the future to service your needs. See your nearest Fleetwood dealer for a full explanation of benefits and restrictions.

CLUB FLEETWOOD As a Fleetwood owner, you're eligible to become a member of our owners' group, Club Fleetwood. It's a perfect way to meet other Fleetwood owners who love to travel to beautiful resorts and vacation spots all across America. Call (877) 577-2560 and join the fun! Or visit www.fleetwood.com/clubs to learn more.

FLEETWOODRV.COM To locate a dealer near you, visit our website or call 1-800-444-4905. We can also be contacted at Fleetwood Customer Relations, P.O. Box 7638, Riverside, CA 92513-7638.

www.fleetwoodrv.com

*For complete info see your Fleetwood dealer. © 2004. Fleetwood Enterprises, Inc.
Printed in the USA. Inventory control number TISL05F2 10/04.

IMPORTANT—PLEASE READ Product information, photography and illustrations included in this publication were as accurate as possible at the time of printing. For further product information and changes, please visit our website at www.fleetwoodrv.com or contact your local Fleetwood dealer. Prices, materials, design and specifications are subject to change without notice. All weights, fuel, liquid capacities and dimensions are approximate. Fleetwood has designed its recreational vehicles to provide a variety of uses for customers. Each vehicle features optimal seating, sleeping, storage and fluid capacities. The user is responsible for selecting the proper combination of loads (i.e. occupants, equipment, fluids, cargo, etc.) to ensure that the vehicle's capacities are not exceeded.

Your local Fleetwood dealer is:

tread lightly!
LEAVING A GOOD IMPRESSION

