



MONACO[®]

DRIVING YOUR DREAM.

2006 KNIGHT[®]



THE PRESTIGE OF A MONACO.
IN A VALUE THAT CAN'T BE BEAT.

The legendary quality, performance and style of a Monaco turns heads in admiration from coast to coast. And owning one for yourself is as easy as the 2006 Knight. We invite you to compare its Roadmaster chassis, its remarkable collection of features and our unsurpassed owner support with that of any other coach. You'll see that in fact, a Monaco will also turn your head with its unbeatable value. We cordially welcome you to climb aboard.

An exciting development this year is the new ceiling height — we've raised it to a full 7 feet — for more spaciousness than ever before.

Allow us to point out some distinctive details that make this a Monaco interior. Raised panel hardwood cabinet doors and refrigerator inserts. Crown molding. Decorative hardwood-accented slide-out fascia. Decorative antique brass lighting and cabinet hardware. And beautiful textured, padded carpeting.

- 1 Style meets convenience in the galley, with its sleek, **polished solid surface radius countertop** and an **under-mounted plexus-stone sink**. A handy **separate faucet** provides filtered water, and a **combination convection/microwave oven** puts many cooking functions right at your fingertips.
(40PLQ, Champagne Select, Basil Leaf)
- 2 The roomy bedroom features a **queen bed, nightstands with hardwood tops**, and a **20" TV** tucked in the overhead cabinets. A **pillow top mattress** makes an excellent option, as does the **king bed**, available in the 40PDQ. The 40PLQ (shown here) also pampers you with a beautiful **bench seat, fabric barrel chair** and **new style desk chair**. *(40PLQ, Champagne Select, Basil Leaf)*
- 3 While the **booth dinette** (shown here) is standard, you may also choose an optional **freestanding dinette** with a **full-length wall cabinet, two newly styled freestanding chairs** and **two handy folding chairs**. *(40PLQ, Champagne Select, Basil Leaf)*
- 4 In the bathroom, you'll enjoy the residential styling of the **shower** with an **antique brass frame** and **decorative glass enclosure**, as well as a **radius solid surface countertop with an integrated sink**. *(40PLQ, Champagne Select, Basil Leaf)*







◆◆ PANAVIEW™

1 - PIECE WINDSHIELD



Our exclusive Panaview™ 1-piece windshield gives you the largest, and safest, unobstructed view of the road ahead. The wipers are discreetly mounted below your sightline, and the side pillars are more slender, for a wraparound effect.



YOUR FRONT ROW SEAT TO THE BEST PERFORMANCE ON THE ROAD.

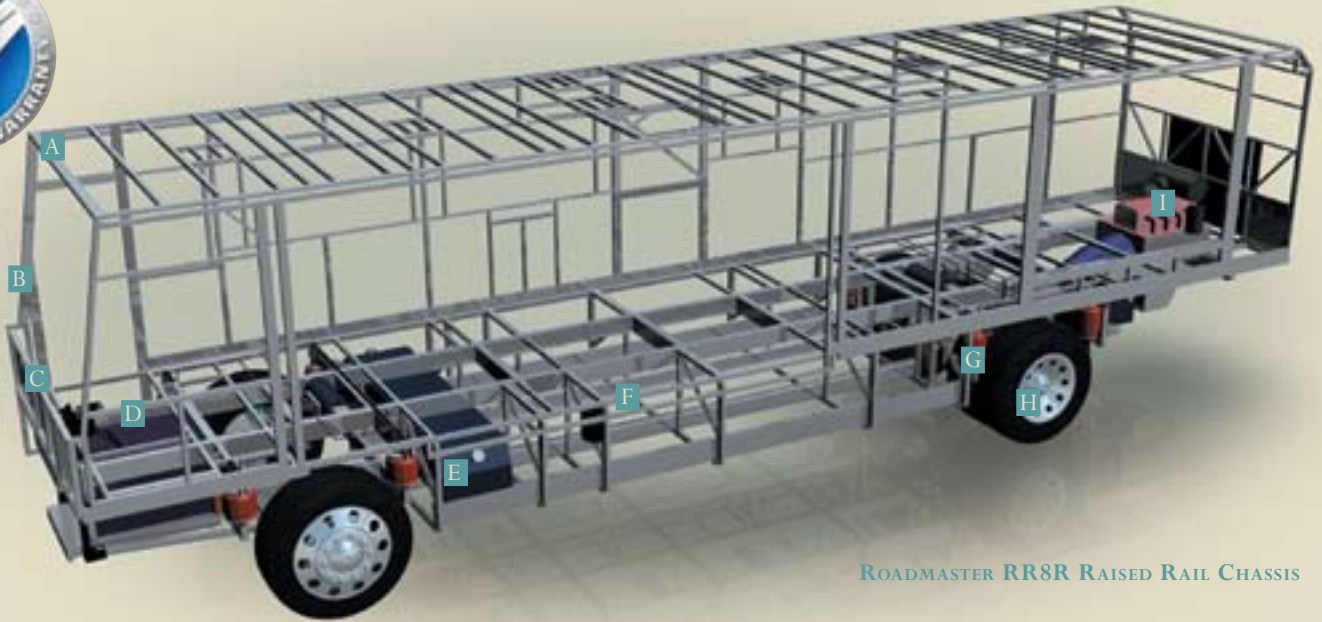
At the helm of the Knight, you'll take control of the incomparable Roadmaster chassis and its powerful Cummins® engine. And all the while, you'll know you're in one of the safest coaches in the industry, thanks to the steel cage cockpit construction and steel firewall. Yes, with the attractive dash, easy-to-read gauges and ergonomically organized switches and controls, you're in the best seat in the house.

To the right of the steering wheel, you'll find the monitor for the rear vision system with audio and an adjustable camera. The optional Aladdin™ Junior system also displays its many functions here. And, for an expanded view, you have the option of a 3-camera rear vision system with two additional side cameras.

The adjustable brake and accelerator pedals ensure that drivers of all heights have optimum comfort and control.

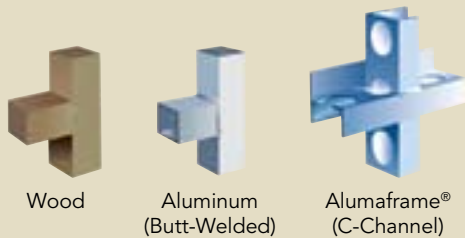
- 1 Driving or parked, you'll enjoy the comfort of **soft touch vinyl cockpit seats (OptimaLeather™ in the Ralph Lauren Hampstead Lane sport decor)**. Both seats feature **six-way power controls**, and the co-pilot's has a **power footrest**. Above the cockpit are cabinets for the **24" TV** and **home theater system** with **VCR/DVD player** and **surround sound speakers**. The coach is also prepped for an optional **digital satellite system**. (40PLQ, Champagne Select, Basil Leaf)





ROADMASTER RR8R RAISED RAIL CHASSIS

A The Knight features Monaco's exclusive Alumaframe® Superstructure. Our revolutionary system of aluminum C-Channel crossmembers runs the entire length of the unit, with double-welded intersections for added strength. This rigid design is both lighter and sturdier than wood or tubular aluminum frames — and much more reliable than butt-welded or screwed joint designs. From dirt roads to potholes, you can count on Alumaframe® to handle the relentless stresses of the road and provide superior structural integrity for many years to come.



Wood

Aluminum
(Butt-Welded)

Alumaframe®
(C-Channel)

B A steel cage cockpit gives the Roadmaster chassis incomparable strength and safety in the front of the coach.

C Every Roadmaster chassis features a steel firewall for added protection in the cockpit.

D The main rails feature an exclusive raised rail design which provides for larger full pass-through storage bays with flush floors. Other highlights include a 3/8" thick frame rail — compared to the 1/4" of other manufacturers — and a stacked aluminum intercooler and radiator for optimum heat transfer and cooling.

E Dual fuel fill allows you to fill the tank from either side of the coach, for greater convenience and flexibility at the pump.

F This steel truss system is engineered as part of the chassis and provides outstanding strength and rigidity plus pass-through storage. In addition, the structure is pre-primed and coated with a rust-inhibiting paint.

G Eight air bags work in conjunction with eight gas-powered shock absorbers to prevent road trauma from ever reaching the coach.

Monitored leveling sensors continually adjust the air pressure at each axle to maintain a level ride and eliminate nosediving, weight transfer, and floating on curved roads. This system also stabilizes the coach on uneven surfaces.

H Automatic Traction Control (ATC) eliminates wheel slippage in slick conditions and heightens control. The Anti-Lock Braking System (ABS) gives you superior stopping power, especially on steep grades. Together, these sophisticated systems offer the very best safety on the road.

I The Knight features a gutsy standard Cummins® ISC 330 diesel engine with Allison® 3000 MH 6-speed World Transmission and electronic shifter.

The three-point engine mounting system lowers the coach's center of gravity and reduces the amount of vibration that reaches the coach. The mounting also makes the engine easier to service.

A 10,000 lb. tow hitch rating is the highest in its class.



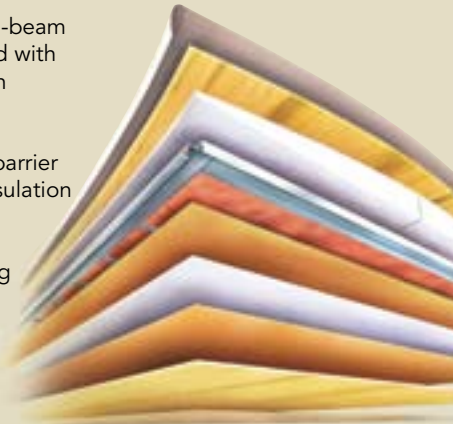
OUTBOARD AIR BAG SUSPENSION

The outboard-mounted air bags are protected by two steel plates and are placed farther apart than the competition, providing a wider and more stable platform for the coach. The active suspension automatically adjusts the pressure of the air bags as you drive and virtually eliminates nose-diving and the side-to-side body sway associated with high wind conditions, curvy roads and emergency maneuvers.



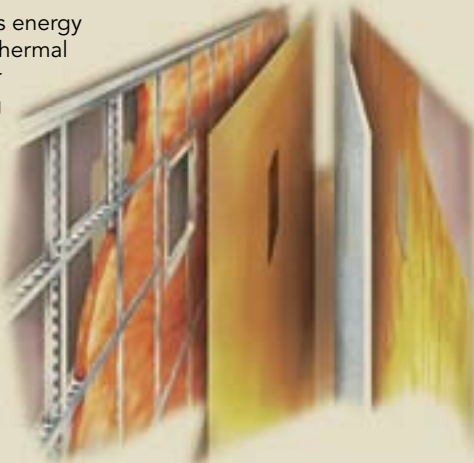
ROOF CONSTRUCTION: (top to bottom)

- One-piece peaked fiberglass roof
- Luaun backing
- Thick, tapered bead foam insulation
- Aluminum double I-beam superstructure filled with fiberglass insulation
- Vapor barrier
- Structure foam: thermal insulative barrier
- 1/2" bead foam insulation
- Foam padding for extra insulation
- Padded vinyl ceiling



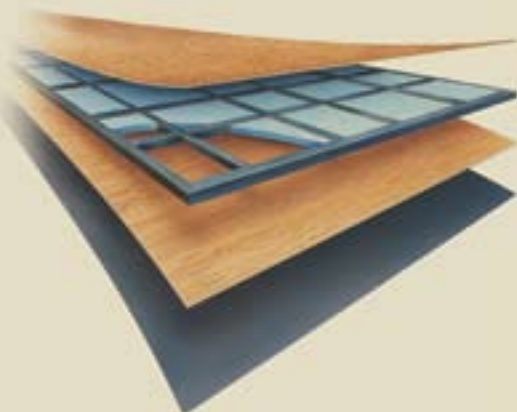
SIDEWALL CONSTRUCTION: (left to right)

- High-gloss gel coat fiberglass
- Interlocking C-Channel filled with 1-1/2" fiberglass insulation glued in place so it doesn't sag or leave spaces uninsulated
- Vapor barrier
- Bead foam saves energy and provides a thermal insulative barrier
- Interior paneling



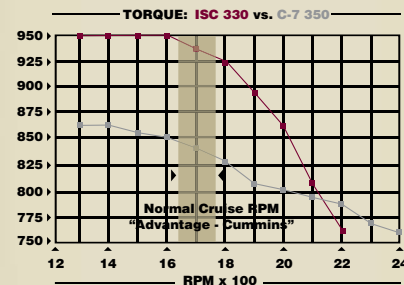
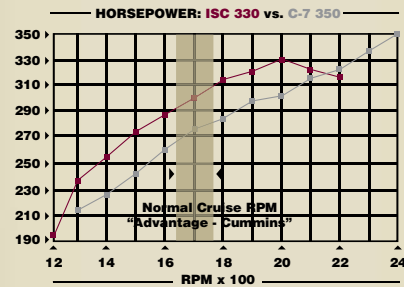
FLOOR CONSTRUCTION: (bottom to top)

- Darco
- Luaun
- Blue foam
- 1-1/2" tube
- Structurwood™



OUR PHILOSOPHY: DO ONE THING,
AND DO IT BETTER THAN ANYONE.

The quality of your coach all starts with the chassis on which it's built. Everything from safety and reliability to performance and convenience begin with the chassis you're driving. A division of Monaco Coach Corporation, Roadmaster is the leading high-end diesel chassis manufacturer — because that's all we do. Yes, we have a 100% commitment to producing only chassis for motorhomes. And that's something no other chassis manufacturer can say.



The 2006 Knight is powered by a Cummins® ISC 330 HP engine — engineered to give you maximum torque at the RPM where you need it most.



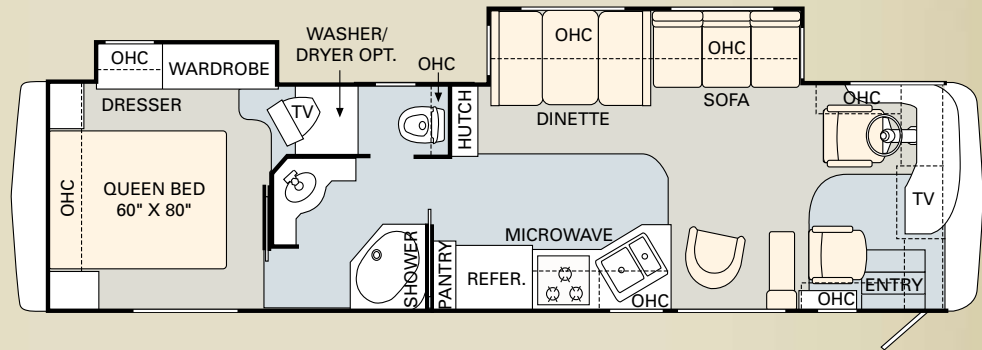
You'll enjoy a full package of high quality awnings, including an Eclipse automatic patio awning.

The 2006 Knight is available in a remarkable selection of innovative floorplans ranging from 37' to 40', with double, triple and quad slide-outs. No matter which one you choose, you'll enjoy more livable interior space and more easy-to-reach storage than any other manufacturer has to offer.

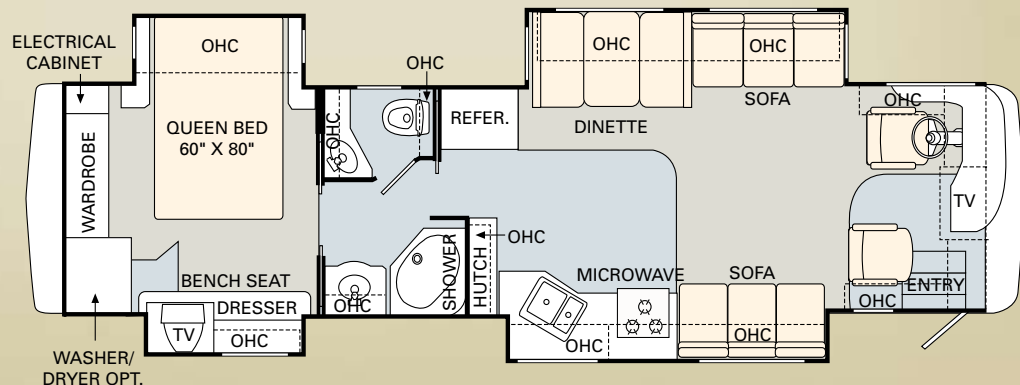
 TILE/LAMINATE  CARPET

Furniture Options:

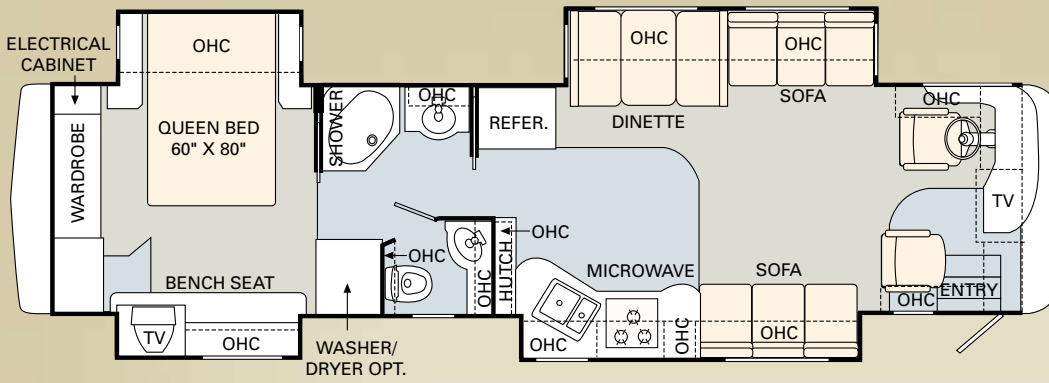
- Curbside: OptimaLeather™ Sleeper Sofa with Two Pillows
- Curbside: Computer Workstation with 27" LCD TV and OptimaLeather™ Euro-Recliner with Ottoman, Heat and Massage (N/A: 37PBD, 40PLQ)
- King Bed with One Nightstand (40PDQ)
- Freestanding Dinette with Full-Length Wall Cabinet, Two New Style Freestanding Chairs and Two Folding Chairs (N/A: 40PET)
- Bathtub



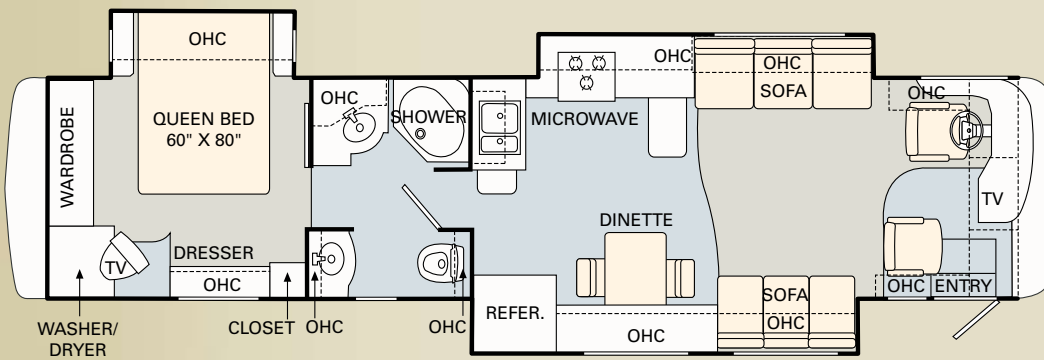
37PBD



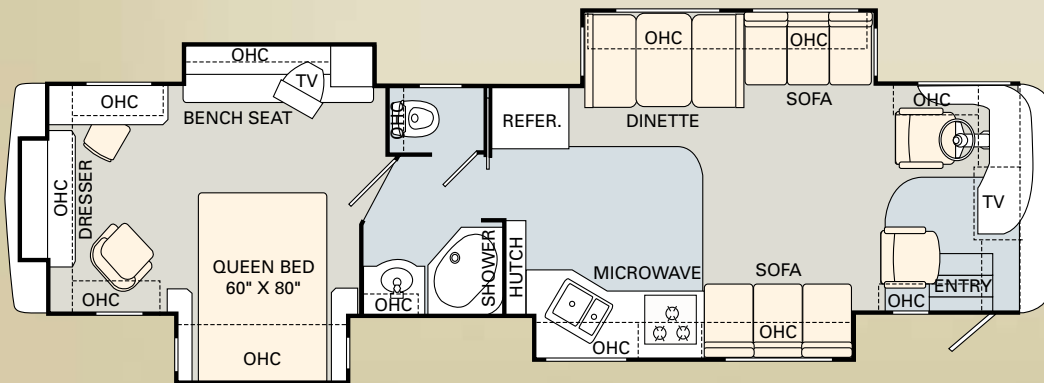
38PDQ



40PDQ



40PET




40PLQ

When you think Monaco, you think impeccable styling. And 2006 is no exception. No matter where your tastes lie — from traditional to contemporary, conservative to bold — we give you more ways to turn your motorhome into your dream home. The Knight is proud to offer the Hampstead Lane Sport Decor by Ralph Lauren.

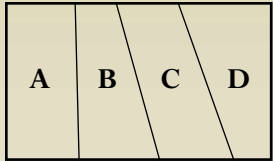
Note: Colors depicted are a reasonable representation though they may not be an exact match of the actual colors due to variances in processing and production. See your dealer for actual fabric and paint chip samples.

Better Stain Protection

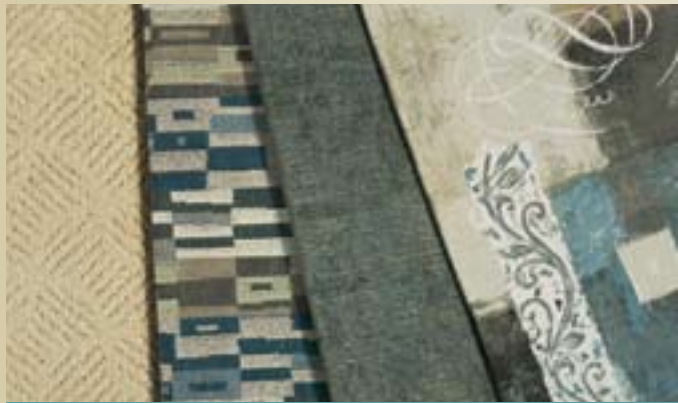


Manufactured in, not added on. For added protection against stains, soil repellent is applied to virtually all upholstery fabric during the finishing process for superior coverage.*

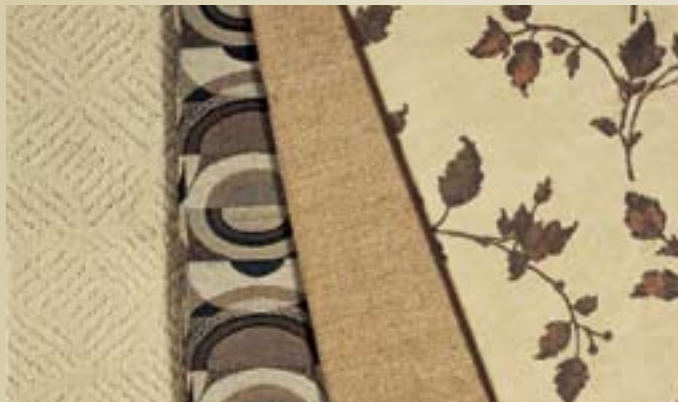
* Brand and application of upholstery fabric protection may vary depending on date recreational vehicle was manufactured.



- A Carpet
- B Dinette
- C Sofa
- D Bedspread



BASIL LEAF



ESPRESSO II



NEW VINTAGE OAK



NEWPORT CHERRY



CHAMPAGNE SELECT

WE'RE NEVER MORE THAN A CLICK AWAY.

A great way to get the latest product news and updates is by visiting our website at monacocoach.com. The site includes many features, including factory tours, a dealer locator function and information on scheduled club events. Plus, through the site, you may contact us directly at any time.



www.monacocoach.com



ONYX II



RALPH LAUREN HAMPSTEAD LANE SPORT



THERE'S STRENGTH IN OUR NUMBERS.

As you consider your RV purchase, there's one thing we'd like you to keep in mind: Nobody does customer service like Monaco. Period. Our staff is available 24/7/365 to help you with virtually any situation that may arise — with troubleshooting, operational instruction or facilitating repairs at the nearest of our 350 nationwide service centers. In addition, you'll be enrolled in our Owner Advantage Roadside Assistance Program free of charge for your first year of ownership — providing additional emergency assistance, including towing, tire repairs and many more services around the clock. In short, when you purchase an RV from Monaco Coach Corporation, you get a wider array of benefits than any other manufacturer can offer. To see it all for yourself, call 1-800-634-0855 or 1-800-650-7337 to arrange a tour of one of our state-of-the-art production facilities in Oregon or Indiana.

WARRANTIES

12 month/24,000 mile
basic limited warranty

5 year/50,000 mile
limited warranty on aluminum or steel frame structure of sidewall, roof, front and rear cap

3 year/36,000 mile
limited warranty on Roadmaster chassis

Applies to certain models. See owner's manual for complete details.

	Weight Ratings (Lbs.)	Gross Vehicle	Gross Combined ¹	Front Gross Axle	Rear Gross Axle	Measurements	Wheelbase	Overall Length	Overall Height (with A/C) (add 5" for satellite option)	Interior Height	Interior Width	Exterior Width	Tank Capacity (Gal.) ²	Water Heater	Gray Tank	Black Tank	Fresh Tank	LP Tank ³	Fuel Tank
37PBD		33,000	43,000	13,000	20,000		225"	37' 10"	12' 6"	84"	94.5"	100.5"		10	60	40	100	40	100
38PDQ		33,000	43,000	13,000	20,000		237"	38' 10"	12' 6"	84"	94.5"	100.5"		10	60	40	100	40	100
40PDQ		33,000	43,000	13,000	20,000		261"	40' 10"	12' 6"	84"	94.5"	100.5"		10	60	40	100	40	100
40PET		33,000	43,000	13,000	20,000		261"	40' 10"	12' 6"	84"	94.5"	100.5"		10	60	40	100	40	100
40PLQ		33,000	43,000	13,000	20,000		261"	40' 10"	12' 6"	84"	94.5"	100.5"		10	60	40	100	40	100

- 1 Towing capacity is limited by GCWR; your vehicle's towing capacity is the difference between the GCWR and the actual vehicle weight, including all water, fuel, passengers and cargo. Your towed vehicle should be equipped with auxiliary brakes if the weight of the towed vehicle exceeds 1,000 lbs. Consult your owner's manual for further towing information.
- 2 All tank capacities are estimated based upon calculations provided by the tank manufacturers and represent approximate capacities. The actual "usable capacity" may be greater or less than the estimated capacities based upon fabrication and installation of the tanks.
- 3 Actual filled LP capacity is 80% of listing due to safety shut-off required on tank.

The actual overall length of the recreational vehicle may differ from that indicated in the brochure due to variances in the manufacturing process and/or installed components. The actual length may be greater or less than that indicated. Due to the large variety of options and floorplan arrangements available to our customers, actual weights for each unit can differ significantly. Monaco Coach provides a weight sticker on each unit we produce which includes that unit's tank capacities and approximate weight. Consult your local Monaco Coach dealer for unit availability and further information. The information printed in this brochure reflects product design, fabrication, and component parts at the date of printing. The manufacturer reserves the right, at any time, to make changes in product design or material or component specifications as its sole option, without notice. This includes the substitution of components of a different brand or trade name which will result in comparable performance. All information printed in this brochure is subject to change after the date of printing. Some features shown or mentioned in this brochure are optional and may only be available in selected floorplans. Photographs may show props or decorations that are not standard equipment on Monaco Coach models. Monaco Coach, the Monaco logo and its design, are registered trademarks. All other products and company names are trademarks and/or registered trademarks of their respective holders. While the color of the motorhome's exterior and the interior fabrics depicted in this sales brochure are fair and reasonable depictions, the colors depicted may not be an exact match of the actual colors because of the variances in photo-processing and variances caused by inserting the photographs within the sales brochure. Due to product improvements, changes during the model year and/or transcription errors that may occur, information represented within this brochure may not be accurate at the time of your purchase. If certain information is significant to your purchasing decision, please confirm the information with your dealer prior to submitting your order. Component part and appliance manufacturers issue limited warranties covering those portions of the recreational vehicle not covered by the Limited Warranties issued by Monaco Coach Corporation. To learn which specific component parts and appliances are excluded from the Limited Warranties issued by Monaco Coach Corporation, please contact your selling dealership or Monaco Coach Corporation directly, or review the warranty packet inside the recreational vehicle.

BODY CONSTRUCTION

Alumaframe® Superstructure
 Steel Cage Cockpit Construction
 Peaked One-Piece Fiberglass Roof with Fiberglass Insulation
 Smooth Gel Coat Fiberglass Exterior Walls
 Front and Rear Molded Fiberglass Caps
 One-Piece Front Windshield
 Interior Height 84"
 One-Piece Generator Access Door
 Rear Engine Doors with Struts
 Fiberglass Engine Cover
 Steel Framed Floor on Steel Trusses
 Laminated Structurwood™ Flooring
 Electric Flush-Floor Stepwell Cover
 Interior Paneling with 3/4" Insulation

Foam Insulated Floor Framing with Luaun Backer
 17.5" Chrome Power Heated Remote Mirrors
 Headlamp with Turn Signal Fog Lights
 Flush-Mount Metal Fuel Doors
 30" Deep Bedroom Slide-Outs
 Side-Hinged Baggage Doors with Redesigned Extrusion and Latch Locations
 One-Piece Polyethylene Pass-Through Storage Compartment
 Wheel Mud Flaps
 Full-Length Mud Flaps
 3M Film Front Mask

Deluxe Full-Body Paint
 Roof Ladder
 Undercoating

OPTIONS

Standard Run Savings Package Includes: 3-Camera Rear Vision System with Audio and Adjustable Center Camera, Pillow Top Mattress, Exterior Tank Monitor Gauge
 Storage Bay Slide-Out Tray, Pass-Through Slide-Out Battery Tray

CHASSIS/ENGINE/SUSPENSION

Roadmaster Raised Rail Chassis RR8R
 Cummins® ISC 330 Engine with Allison®
 3000 MH 6-Speed World Transmission
 and Electronic Shifter
 Engine Displacement: 8.3L/540.5 Cu. In.
 Torque: 950 lbs./ft. Max. Net at 1,400 RPM
 Polished Stainless Steel Engine Exhaust
 Tailpipe Tip
 Fuel Tank Capacity 100 Gallon
 Dual Fuel Fill
 160 Amp Alternator

Rear Axle Ratio: 4.30:1
 Radial Tires: 275/70R/22.5
 Polished Aluminum Wheels
 8 Gas Monroe® Shocks
 8 Outboard-Mounted Air Bags
 Anti-Lock Braking System with Full
 Air Brake
 Automatic Traction Control
 Pac Brand Exhaust Brake
 Auto Slack Adjusters

Pre-Wire for Supplemental
 Braking System
 Transmission Temperature Gauge
 Air Cleaner Restrictor Gauge
 Fuel and Water Separator
 Remote Transmission Fill
 Fully Automatic Leveling System (3 Point)
 10,000 Lb. Hitch Receiver with Dual
 Connector 4-Pin or 7-Pin

COCKPIT

Automotive Dash with Beige Circuit
 Board Instrumentation Panel
 12V Chassis Battery Gauge on Dash
 CD Player/Radio with Sirius-Ready
 Compatibility and Weather Band
 Wood Framed Cabinet Doors with
 Smoked Glass over Front Entertainment
 Center Systems
 Front Cab over Television Secured with
 Steel Framing
 Rear Vision System with Audio and
 Adjustable Camera
 Adjustable Brake and Accelerator Pedal
 Intermittent Windshield Wipers
 6-Quart Tank for Windshield Fluid with
 Fluid Sensor to Tank and "Low Wash"
 Indicator on Dash

Tilt/Telescopic Steering Wheel
 Cruise Control
 Power Steering
 ICC Light Switch to Driver's Side Console
 Audio Low-Air Alarm
 Air Horns
 Molded Co-Pilot Side Console with Map
 Pocket and Two-Tier Cup Holder
 Front Power Sunvisors with
 Integrated Motor
 Soft Touch Vinyl Pilot and Co-Pilot
 Seats (All Decors except Hampstead
 Lane – Ralph Lauren Sport Decor)
 New Style Distressed OptimaLeather™
 Pilot and Co-Pilot Seats with Hampstead
 Lane – Ralph Lauren Sport Decor
 Six-Way Power Pilot Seat

Six-Way Power Co-Pilot Seat with
 Powered Footrest
 Carpeted Driver and Passenger
 Floor Mats

OPTIONS

Pilot and Co-Pilot Pull-Down Sunshades
 OptimaLeather™ Pilot and Co-Pilot Seats
 3-Camera Rear Vision System with Audio
 and Adjustable Center Camera
 Aladdin™ Junior System
 Auxiliary Defroster

APPLIANCES AND ACCESSORIES

Large Double-Door Refrigerator with
 Ice Maker
 High-Output Three-Burner Cooktop
 without Oven
 Removable Solid Surface Range Covers
 Convection Spacesaver Microwave
 24" Stereo Color TV with Remote
 Control in Cockpit Overhead
 20" Color TV with Remote Control
 in Bedroom
 TV Antenna

Home Theater System with DVD/VCR
 Player with Surround Sound Speakers
 Exterior Hook-Ups for DSS Dish
 and Cable
 CB Prep
 Digital Satellite System Prep
 Interior Cable TV Hook-Up and
 Telephone Jacks
 Exterior Gas Line Hook-Up Prep
 for LP Accessories
 Washer/Dryer Prep (N/A: 40PLQ)

OPTIONS

High-Output Three-Burner Range
 with Oven (N/A: 40PET)
 Combination Washer/Dryer
 27" Flatscreen LCD TV in Front
 Cockpit Overhead
 Fully Automatic Digital Satellite System

SAFETY

Fire Extinguisher (10BC)
 Deadbolt Lock on Entrance Door
 120V GFI Protected Circuit (Kitchen,
 Bath, Exterior)

LP Gas Detector
 Smoke Detector
 Carbon Monoxide Detector

Driver and Passenger Three-Point Seat
 Belts (Wall-Mounted)
 Third Brake Safety Light
 Egress Window (One in Bedroom)

INTERIOR

New Vintage Oak Cabinetry
 Raised Panel Hardwood Cabinet Doors
 Hardwood Cabinet End Panels
 Refrigerator Raised Panel
 Hardwood Inserts
 New Decorative Wallboard
 New Wallpaper Border Bath
 Self-Supporting Top-Hinged Overhead Storage Doors and Positive Catches on All Other Doors
 Heavy-Duty Ball Bearing Drawer Guides
 Wood Cabinet Drawer Boxes
 Metal Interior Grab Handle on Dash at Entry Door
 Antique Brass Cabinetry Hardware and Bath Accessories
 Polished Solid Surface Radius Profile
 Kitchen Countertop with Under-Mounted Plexus-Stone Sink with Two Sink Covers
 Kitchen Countertop Extension (40PET)
 Toe Kicks Kitchen and Bath Base Cabinets
 Solid Surface Radius Profile Bath Lavatory Countertop with Integrated Bowl
 Dinette Tops Laminated with Solid Surface Edge
 All Other Countertops Hardwood with Beveled Edge except Kitchen, Bath Lavatory and Dinette

Kitchen Overhead Cabinets with Adjustable Shelf (N/A: 38PDQ, 40PLQ)
 Second Kitchen Pantry next to Refrigerator, Roll-Out Storage in Upper and Lower Cabinet (37PBD)
 Silverware Drawer with Organizer Kitchen Base Cabinets
 Kitchen, Smoked Beveled Edge Mirrors behind Stove Area
 Entryway Flooring Laminate Tile
 Kitchen Flooring Laminate Tile
 Bath Flooring Laminate Tile
 Textured Style Nylon Carpeting with Pad in Living Area and Bedroom
 Engine Rug Cover (N/A: 37PBD)
 Soft Touch Padded Vinyl Ceiling
 Hardwood Inserts on Slide-Out Fascia Legs with Decorative Corner Blocks
 Hutch Cabinet in Living Area with Decorative Glass and Accent Mirror between Countertop and Overhead Cabinet (37PBD)
 Accent Mirrors on Living Area Bath Wall Living Room Side or Side of Refrigerator Cabinet (N/A: 37PBD, 40PET)
 Decorative Picture in Bedroom (N/A: 37PBD)
 Hardwood Raised Panel Bathroom Door
 Accent Crown Molding in Bedroom and Living Area on All Open Walls

Medicine Cabinet with Adjustable Shelves (N/A on Angle Cabinets)
 Bathroom Lavatory Mirror
 Towel Bar inside Private Bath
 Two Towel Rings in Bathroom
 Oversized Rear Wardrobe Closet with Deluxe Mirror Door Frames Antique Brass (N/A: 37PBD, 40PLQ)
 Bedroom Swing-Away TV Cabinets (37PBD, 40PET)
 Roadside Bedroom Slide-Out Wardrobe (37PBD)
 Bedroom Dresser Foot of Bed and Decorative Furniture Leg (40PET)
 Bedroom Wardrobe Slide-Out Foot of Bed (N/A: 37PBD, 40PET)
 Bedspread Pillow Shams with Two Decorative Pillows
 Hardwood Headboard with Raised Panel Inserts
 Pleated Day/Night Blackout Shades in Living Area and Bedroom
 Mini Blinds in Kitchen and Bathroom
 Soil Repellant Fabric Protection

OPTIONS

Decors: Espresso II, Basil Leaf, Onyx II, Hampstead Lane – Ralph Lauren Sport
 Wood Choice: Newport Cherry and Champagne Select

FURNITURE

Queen Bed with Overhead Cabinet and Nightstands
 Party Table behind Co-Pilot Seat (37PBD)
 Arched Back Wood Booth Dinette with Table Top and 30" Drawers (N/A: 40PET)
 Freestanding Dinette with Full-Length Wall Cabinet, Two Freestanding Chairs and Two Folding Chairs (40PET)
 Roadside: Fabric Easy-Bed Sofa with Two Pillows
 Curbside: Fabric Easy-Bed Sofa with Two Pillows (N/A: 37PBD)
 Curbside: Fabric Barrel Chair (37PBD)
 Fabric Barrel Chair and New Style Desk Chair Bedroom, Roadside Chair Deleted with Washer and Dryer Option (40PLQ)

OPTIONS

Pillow Top Mattress
 Roadside: Fabric Hide-a-Bed Sofa with Air Mattress and Two Pillows (N/A: 40PLQ)
 Curbside: OptimaLeather™ Sleeper Sofa with Two Pillows
 Curbside: OptimaLeather™ Hide-a-Bed Sofa with Air Mattress and Two Pillows (40PLQ)
 Curbside: OptimaLeather™ Recliner IPO Barrel Chair (37PBD)
 Curbside: OptimaLeather™ Euro-Recliner Chair with Heat, Massage and Ottoman IPO Barrel Chair (37PBD)

Curbside: Computer Workstation with 27" LCD TV and OptimaLeather™ Euro-Recliner with Ottoman, Heat and Massage (N/A: 37PBD, 40PLQ)
 Fabric Barrel Chair IPO Desk Chair Bedroom (N/A with Washer and Dryer Option 40PLQ)
 Curbside Desk Bedroom IPO Fabric Barrel Chair (Requires Washer/Dryer Option) (40PLQ)
 King Bed with One Nightstand (40PDQ)
 Freestanding Dinette with Full-Length Wall Cabinet, Two New Style Freestanding Chairs and Two Folding Chairs (N/A: 40PET)

ELECTRICAL SYSTEMS AND LIGHTS

50 Amp 120V Distribution Panel and Manual Retracting Power Cord Reel
Energy Management System
2,000 Watt Inverter
Onan® 8.0 kW QD Diesel Generator
Four 6V House Batteries
Battery Disconnect Switch at Front Door
12V and 110V Outlet in Cockpit Area
Porch Light and Exterior Step Light on Same Switch
Exterior Power Entry Step with Light
Interior Stepwell Entry Step Lights
Lights in Outside Storage Compartments
120V Receptacles in Outside Storage Compartment

Underhood Utility Light
Receptacle and Phone Jack in Dinette Area
Directional Map Lights Pilot and Co-Pilot Seats
Halogen Light on Driver and Passenger Overhead
Redesigned Convenience Center in Hallway
Fluorescent Light(s) under Kitchen Overhead
Fluorescent Ceiling Lights Throughout
Fluorescent Ceiling Lights inside Living Area Slide-Out House
Decorative Framed Galley Ceiling
Fluorescent Light with Skylight

Decorative Lighting Antique Brass Living Room Wall Light, Dinette Overhead Light and Cosmetic Vanity Light
Halogen Lights under Living Room, Dining Room and Bedroom Dresser Overhead Cabinets
Gem Lights over Bed Antique Brass Finish with His and Hers Switches

OPTIONS

Exterior Tank Monitor Gauge in Wet Bay

PLUMBING AND LP SYSTEMS

Kitchen Composite Under-Mounted Sink with New Style Single Lever Satin Nickel Faucet with Pullout Sprayer
Separate Satin Nickel Faucet for Filtered Water
New Bath Lavatory Faucet Single Handle Antique Brass
Demand Water System and Water Pump
10-Gallon LP Gas/Electric Water Heater with Electronic Ignition, DSI
Winterization Valving System
Water Heater Bypass Valving

New Style Porcelain Toilet with Sprayer
No-Fuss Flush Holding Tank Rinsing System
Insulated Systems Compartment with Easy Access to Hook-Up
Shower inside Wet Bay with Hot/Cold Water
Soap Dispenser inside Utility Bay
Gravity and Pressurized Water Fill
Contained Storage Area for Sewer Hose (N/A with RV Sani-Con System Option)

One-Piece Fiberglass Shower
Antique Brass Shower Door Frame with Decorative Glass

OPTIONS

RV Sani-Con 1 System, Holding Tank Flush System
Electric Automatic Winterization
Power Water Hose Reel
Bathtub IPO Shower

HEATING, VENTS AND AIR CONDITIONING

One 13.5M BTU and One 11.0M BTU Roof Air Conditioner with Ducted Air and Digital Thermostat Control
Electronic Ignition Furnace (40M BTU for 37PBD) (51M BTU: 31M and 20M)
Electronic AC/Heat Climate Control System
In-Floor Ducted Heating System

Bath Powered Attic Fan with Wall Control of Automatic Dome and Fan Power
Kitchen Powered Attic Fan with Wall Control of Automatic Dome and Fan Power
12V Heater in Wet Bay
Wood Louver Air Return Grill for Furnace
Metal Floor Registers Antique Brass

OPTIONS

Dual 13.5M BTU Air Conditioner with Heat Pumps IPO One 13.5M BTU and One 11.0M BTU Roof Air Conditioner
Fantastic 12V Attic Fan with Rain Sensor with Electronic Wall Thermostat in Kitchen
Fantastic 12V Attic Fan with Rain Sensor with Electronic Wall Thermostat in Bath

WINDOWS, DOORS AND AWNINGS

Radius Flush-Mount Dual Pane Safety Glass Dark Tinted Slider Windows
Armless Powered Front Door Awning
Front Entry Door with Removable Screen and Anti-Skid Steps
Exterior Entry Door Grab Handle
Metal Interior Grab Handle on Dash at Entry Door
Eclipse Automatic Patio Awning

Topper Slide-Out Awnings Living Area and Bedroom
Window Awnings on All Slide-Out House Windows except Kitchen Windows and Slide-Out Windows under Patio Awning
Tinted Skylight in Bathroom with Protecta Glaze
Protecta Glaze Tinted Plexiglas® Skylight in Kitchen with Pleated Shade

OPTIONS

Bedroom Skylight with Shade (40PLQ)
Bedroom Window Awning on Sidewall (37PBD, 40PET)



SIGNATURE SERIES

THE EXECUTIVE[®]

DYNASTY[®]

WINDSOR[®]

CAMELOT[™]

DIPLOMAT[®]

KNIGHT[®]

CAYMAN[®]

LAPALMA[®]

MONARCH SE[®]

ESQUIRE[™]

Welcome to the first step toward living your dream. You'll discover that it's not so far from here to there. Because Monaco has a coach that's right for every dreamer. Look closely, and you'll find the high-tech, high-style luxury you've dreamed about is also the very best deal under the sun. Point by point, in every price range, Monaco leads the way in performance, comfort and safety. Yes, you're headed for a dream come true. Just take your first step, and climb aboard.



91320 Coburg Industrial Way, Coburg, OR 97408
800 634-0855

606 Nelson's Pkwy., Wakarusa, IN 46573
800 650-7337

www.monacocoach.com

Monaco Coach Corporation is traded on the NYSE under the listing MNC.
0805 NPN: BROMKNI