

ALLEGRO SPECIFICATIONS

2007



TIFFIN MOTORHOMES

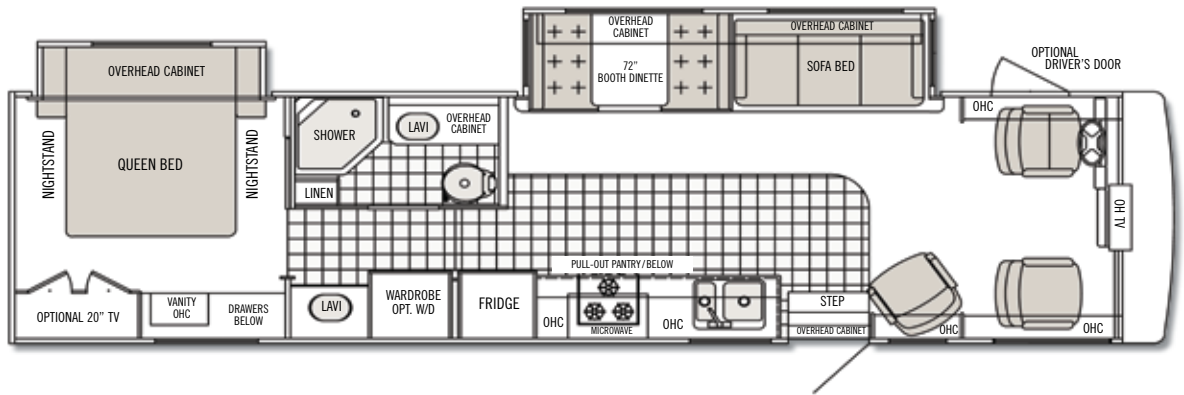
WHEREVER YOU GO, WE GO.

TIFFIN

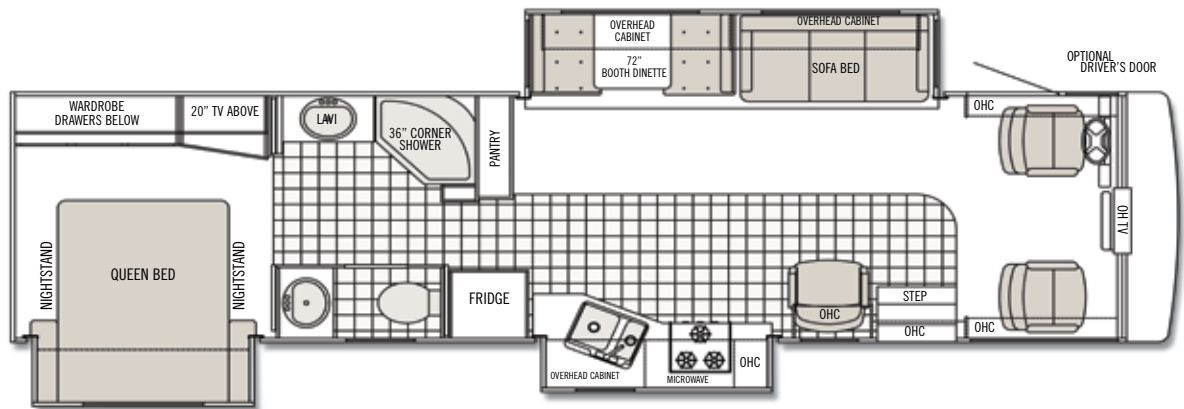
ALLEGRO

FLOOR PLANS

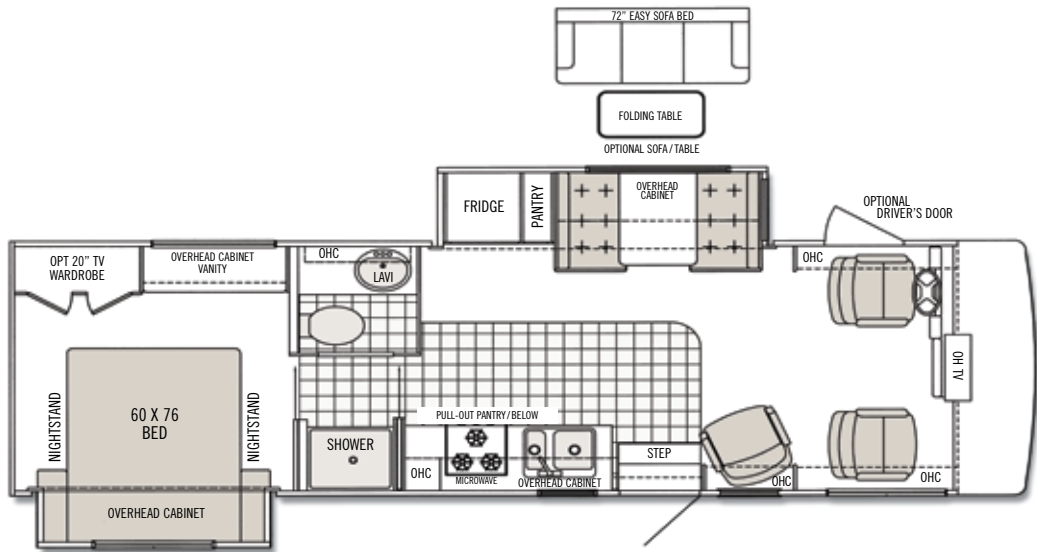
34 WA



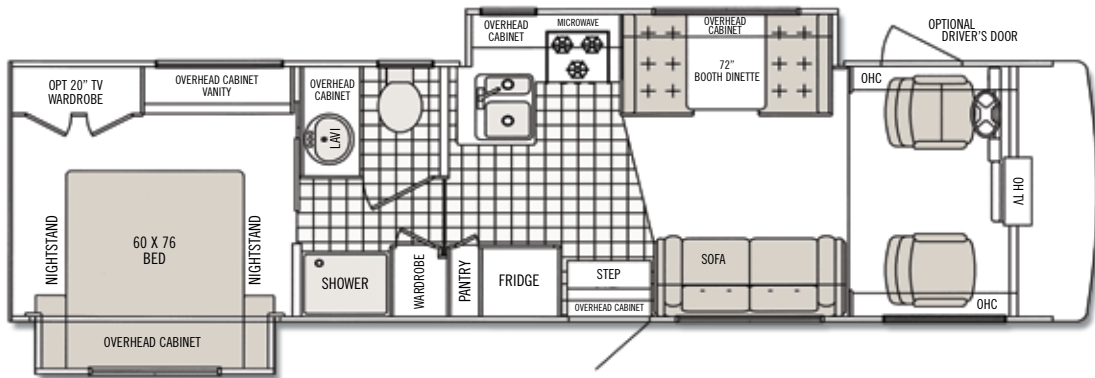
34 TGA



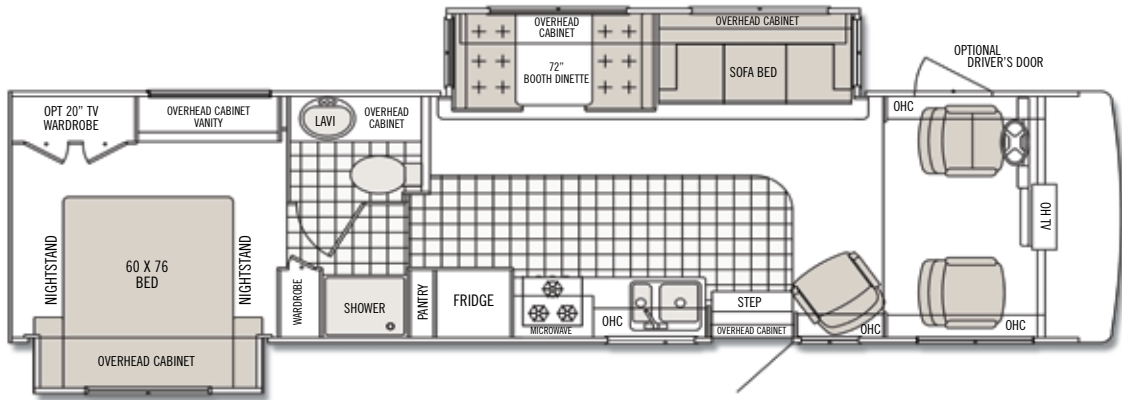
28 DA



30 DA



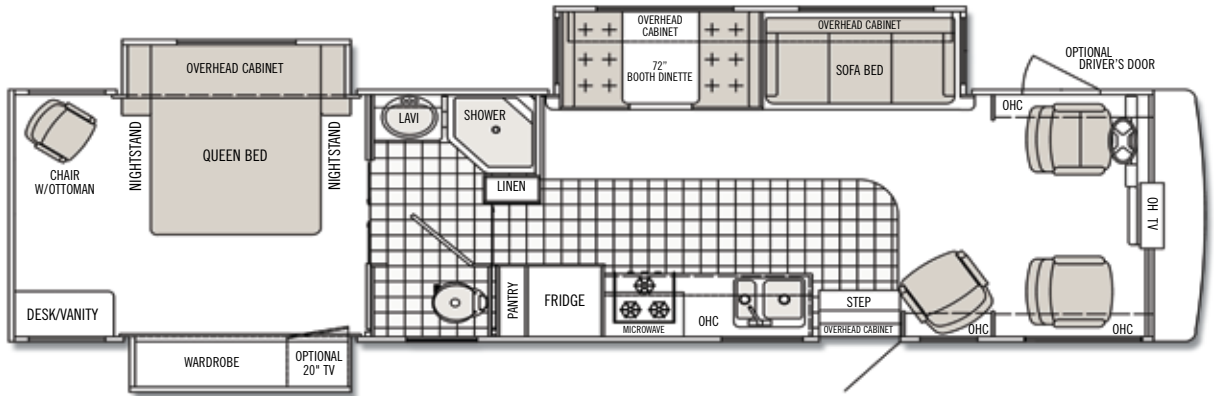
32 BA



Additional floor plans may be available on our website: www.tiffinmotorhomes.com

Aside from our unparalleled customer service, one of the things that Tiffin has been known for over the years is innovative floor plans.

35 TSA



BORDEAUX



DRIFTWOOD

TIFFIN
ALLEGRO
PAINT COLORS

Tiffin Motorhomes, Inc. 105 2nd Street NW Red Bay, AL 35582
Call 256.356.8661 Fax 256.356.8219 www.tiffinmotorhomes.com
For Parts and Service Call 256.356.0261

The following names are registered trademarks of Tiffin Motorhomes:
Open Road®, Phaeton®, Allegro®, Allegro Bay®, Allegro Bus®, Zephyr®, Roughing It Smoothly®, and Pusher®.

TIFFIN

ALLEGRO

CABINETS
FABRICS
AND SPECS



Natural Maple



Cherry Bark



Medium Alderwood

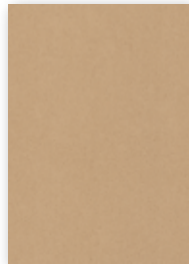


Carpet

BEACH GLASS



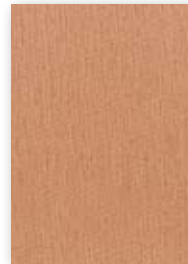
Bedroom



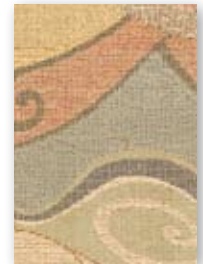
Bedroom Accent



Sofa/Chair



Living Area Accent



Dinette

MIRAGE



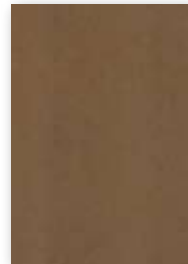
Bedroom



Bedroom Accent



Sofa/Chair



Living Area Accent



Dinette

STONE



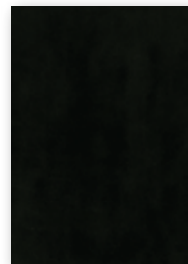
Bedroom



Bedroom Accent



Sofa/Chair



Living Area Accent



Dinette

Our fabric designs and choices of wood grain are sure to suit every taste. All cabinet finishes are available in combination with all fabric schemes.

AUTOMOTIVE

STANDARD EQUIPMENT ON ALL MODELS:

- TorqShift® 5-Speed Automatic Overdrive with Tow/Haul Mode (Ford)
- 1000MH Series 6-Speed Automatic Allison Transmission with Overdrive (Workhorse)
- Leveling Jacks
- Cruise Control
- Emergency Start Switch

FORD CHASSIS	MODEL	28 DA	30 DA	32 BA	34 WA	34 TGA	35 TSA
Engine - 362 HP		6.8 L V10	6.8 L V10	6.8 L V10	6.8 L V10	6.8 L V10	6.8 L V10
Torque (lb.-ft.)		457 @ 3250	457 @ 3250	457 @ 3250	457 @ 3250	457 @ 3250	457 @ 3250
GVWR		20,500	20,500	20,500	20,500	22,000	22,000
GAWR – Front		7,000	7,000	7,000	7,000	7,500	7,500
GAWR – Rear		13,500	13,500	13,500	13,500	14,000	14,000
GCWR		26,000	26,000	26,000	26,000	26,000	26,000
UVW		15,300	15,300	16,910	17,160	17,520	17,730
Overall Height with Roof Air		12' 3"	12' 3"	12' 3"	12' 3"	12' 3"	12' 3"
Wheel Base		208	208	228	228	242	242
Tire Size		245 / 70R 19.5	245 / 70R 19.5	245 / 70R 19.5	245 / 70R 19.5	245 / 70R 19.5	245 / 70R 19.5
Fuel Tank (Gallons)		75	75	75	75	75	75
Alternator Amps		130	130	130	130	130	130
Trailer Hitch Capacity		5,000	5,000	5,000	5,000	5,000	5,000

WORKHORSE CHASSIS	MODEL	28 DA	30 DA	32 BA	34 WA	34 TGA	35 TSA
Engine - 340 HP		NA	8.1 L V8	8.1 L V8	8.1 L V8	8.1 L V8	8.1 L V8
Torque (lb.-ft.)		NA	455 @ 3200	455 @ 3200	455 @ 3200	455 @ 3200	455 @ 3200
GVWR		NA	20,700	20,700	20,700	22,000	22,000
GAWR – Front		NA	7,500	7,500	7,500	8,000	8,000
GAWR – Rear		NA	13,500	13,500	13,500	14,500	14,500
GCWR		NA	26,000	26,000	26,000	26,000	26,000
UVW		NA	15,220	16,820	17,280	17,720	17,780
Overall Height with Roof Air		NA	12' 3"	12' 3"	12' 3"	12' 3"	12' 3"
Wheel Base		NA	208	228	228	242	242
Tire Size		NA	245 / 70R 19.5	245 / 70R 19.5	245 / 70R 19.5	245 / 70R 19.5	245 / 70R 19.5
Fuel Tank (Gallons)		NA	75	75	75	75	75
Alternator Amps		NA	130	130	130	130	130
Trailer Hitch Capacity		NA	5,000	5,000	5,000	5,000	5,000

FREIGHTLINER FRONT ENGINE DIESEL CHASSIS	MODEL	32 BA	34 WA	34 TGA	35 TSA
Engine - 300 HP		Cummins 5.9L	Cummins 5.9L	Cummins 5.9L	Cummins 5.9L
Torque (lb.-ft.)		600 @ 1600	600 @ 1600	600 @ 1600	600 @ 1600
GVWR		24,000	24,000	24,000	24,000
GAWR – Front		9,000	9,000	9,000	9,000
GAWR – Rear		15,000	15,000	15,000	15,000
GCWR		26,000	26,000	26,000	26,000
UVW		18,320	18,780	19,200	19,380
Overall Height with Roof Air		12' 3"	12' 3"	12' 3"	12' 3"
Wheel Base		228	228	242	242
Tire Size		235 / 80R 22.5	235 / 80R 22.5	235 / 80R 22.5	235 / 80R 22.5
Fuel Tank (Gallons)		80	80	80	80
Alternator Amps		160	160	160	160
Allison Transmission		5 Speed	5 Speed	5 Speed	5 Speed

OVERALL	MODEL	28 DA	30 DA	32 BA	34 WA	34 TGA	35 TSA
Overall Length – Approximately		27' 7"	31' 3"	32' 10"	34' 7"	34' 10"	35' 7"
Interior Height		80"	80"	80"	80"	80"	80"
Overall Width		101"	101"	101"	101"	101"	101"
Interior Width		96"	96"	96"	96"	96"	96"
Fresh Water (Gallons)		53	53	53	53	53	53
Black Water (Gallons)		35	35	35	35	35	35
Grey Water (Gallons)		40	70	70	70	70	70
LPG Tank (Gallons; can only be filled to 80% capacity)		24	24	24	24	24	24
Minimum Garage Height		13'	13'	13'	13'	13'	13'

STRUCTURAL

STANDARD EQUIPMENT ON ALL MODELS:

- Laminated Floor, Sidewall & Roof
- Steel / Aluminum Reinforced Structure
- Full One-Piece Fiberglass Roof Cap

EXTERIOR

STANDARD EQUIPMENT ON ALL MODELS:

- Fiberglass Front & Rear End Caps
- Tinted One-Piece Windshield
- 4.0kw Onan® Generator (Will operate only one roof A/C unit.)
- One 13,500 BTU High Profile Roof Coleman A/C (High Efficiency)
- Quiet A/C Roof-Ducted System
- Double Electric Step
- 1/4" Thick Single Pane Windows
- Horizontal Mounted Wipers
- Heated Power Mirrors
- Gel-Coat Fiberglass Walls
- Exterior Graphics & Paint
- Exterior Patio Light
- Manual Patio Awning
- Slideout Awning
- Exterior Storage Doors with Gas Shocks
- Ridged Long-Life Storage Boxes
- Single Handle Lockable Storage Door Latches
- Heated Water and Holding Tank Compartments
- Two 6v Auxiliary Batteries
- Park Telephone Ready
- TV Antenna
- Cable Ready TV
- Black Holding Tank Flush System
- Exterior Rinse Hose / Shower
- Back-up Monitor
- 110v Exterior Receptacle
- 110v / 12v Converter
- Undercoating
- Roof Ladder
- Wheel Liners

	MODEL	28 DA	30 DA	32 BA	34 WA	34 TGA	35 TSA
5.5kw Onan® Generator		0	0	0	0	0*	0*
7.0kw Onan® Generator (Includes 50 Amp Service)		0	0	0	0	0	0
Driver's Door with Power Window		0	0	0	0	0	0
Semi-Automatic King Dome Satellite		0	0	0	0	0	0
2nd - 13,500 BTU High Profile Roof Coleman A/C (High Efficiency)		0	0	0	0	0	0
One 15,000 BTU High Profile Roof A/C with Heat Pump <small>(Requires 5.5 or 7.0 generator-Front Only)</small>		0	0	0	0	0	0
Side View Cameras Activated with Turn Signals		0	0	0	0	0	0

* Required with 34 TGA and 35 TSA

DRIVER'S COMPARTMENT

STANDARD EQUIPMENT ON ALL MODELS:

- Entry Floor Light
- Step Switch and 12v Disconnect Switch
- Snack / Beverage Tray
- Non-powered Cloth Passenger & Driver Seats (Flexsteel®)
- ABS Dash
- Lighted Instrument Panel
- Single CD Player AM/FM Stereo
- 12v Dash Receptacle
- Tilt Steering Wheel
- Dual Dash Fans
- Windshield Privacy Curtain
- Color Flatscreen TV (Front)
- Fire Extinguisher

	MODEL	28 DA	30 DA	32 BA	34 WA	34 TGA	35 TSA
Powered Cloth Driver Seat (Flexsteel®)		0	0	0	0	0	0

LIVING AREA / DINETTE

STANDARD EQUIPMENT ON ALL MODELS:

- Large Pull-Out Storage Drawers in Booth Dinette
- Booth Dinette
- Decorative Wall Hanging

	MODEL	28 DA	30 DA	32 BA	34 WA	34 TGA	35 TSA
Cloth Swivel Chair		S	S	S	S	S	S
Cloth Sofa Bed		NA	NA	S	S	S	S
Cloth Flex Air Hide-a-Bed		NA	NA	0	0	0	0
Sofa in Place of Booth Dinette		0	0	NA	NA	NA	NA
DVD Player		0	0	0	0	0	0

All options may not be available in all models. Because of progressive improvements, specifications, standard and optional equipment are subject to change without notice or obligation.

TIFFIN

ALLEGRO

SPECS

REV 10/06

KITCHEN**STANDARD EQUIPMENT ON ALL MODELS:**

- Single Lever Chrome Sink Faucet
- Double Bowl Kitchen Sink
- 3-Burner Cooktop with Oven
- Microwave
- 8 Cu. Ft. Refrigerator

	MODEL	28 DA	30 DA	32 BA	34 WA	34 TGA	35 TSA
Convection / Microwave		0	0	0	0	0	0
Ice Maker in Refrigerator		0	0	0	0	0	0
Solid Wood Refrigerator Panels		0	0	0	0	0	0

BATH**STANDARD EQUIPMENT ON ALL MODELS:**

- Medicine Cabinet
- Skylight in Shower
- Toilet
- Fiberglass Molded Shower

	MODEL	28 DA	30 DA	32 BA	34 WA	34 TGA	35 TSA
Additional Fantastic® Fan (Water Closet Only)		0	0	0	0	0	0

BEDROOM**STANDARD EQUIPMENT ON ALL MODELS:**

- Wardrobe
- Bed Comforter
- Innerspring Mattress
- Carbon Monoxide Detector
- LPG Leak Detector
- Bed Pillows
- Phone Jack

	MODEL	28 DA	30 DA	32 BA	34 WA	34 TGA	35 TSA
20" Color TV		0	0	0	0	0	0
Bedroom Day / Night Shades		0	0	0	0	0	0
Mirrored Vanity		S	S	S	S	NA	NA

GENERAL INTERIOR**STANDARD EQUIPMENT ON ALL MODELS:**

- Raised Panel Cabinet Doors
- Vinyl Headliner
- Medium Alderwood Solid Cabinet Doors & Drawer Fronts
- Vinyl Tile Flooring in Kitchen & Bath
- Carpeting in Bedroom & Driver's Compartment
- Scotchgard® Treated Carpet and Fabrics
- Day / Night Pleated Shades in Living Room
- Power Roof Vents
- Tank Level Monitor System
- Smoke Detector
- 6-Gal DSI Gas / Electric Water Heater (Electric not available on units with a 4kw generator)
- Compartment Door with Single Point Latch

	MODEL	28 DA	30 DA	32 BA	34 WA	34 TGA	35 TSA
Vacuum Cleaner System		0	0	0	0	0	0
One 30,000 BTU Ducted Furnace		S	S	NA	NA	NA	NA
One 35,000 BTU Ducted Furnace		NA	NA	S	S	S	S
Washer / Dryer		NA	NA	NA	0	NA	NA
Natural Maple Solid Cabinet Door & Drawer Front		0	0	0	0	0	0
Cherry Bark Solid Cabinet Door & Drawer Front		0	0	0	0	0	0