

Freedom Express

By Coachmen



STANDARD FEATURES

INTERIOR APPOINTMENTS

- ◆ Welbeck Birch Cabinetry
- ◆ Yellowstone Glacier Wallboard
- ◆ Oil Rubbed Bronze Hardware & Fixtures
- ◆ Residential Metal Drawer Guides
- ◆ Techwood Drawer Sides
- ◆ Nightshades Throughout
- ◆ Radius Slider Windows - Safety Glass
- ◆ Hide-a-Bed Sofa (FX-31 SS)
- ◆ Reclining Pilot & Passenger Seats
- ◆ Lounge Chair (FX-26 SO & FX-31 SS)
- ◆ Booth Dinette
- ◆ U-shaped Booth Dinette (FX-21 QB)
- ◆ Hardwood Doors & Drawers
- ◆ Designer Linoleum Flooring
- ◆ Partial Carpet (FX-26 SO & FX-31 SS)

APPLIANCES & ACCESSORIES

- ◆ TV Antenna & Rotor Package
- ◆ Bedroom TV Jack (FX-31 SS)
- ◆ Large Button Radio w/4 Speakers (Ford)
- ◆ Standard Chevy Dash Radio w/2 Speakers (Chevy)
- ◆ Owners Information Package
- ◆ Window Lambrequins
- ◆ Vinyl Padded Ceiling (FX-26 SO & FX-31 SS)

GALLEY

- ◆ Residential Size Microwave Oven
- ◆ Double Door Refrigerator
- ◆ Monitor Panel Command Center
- ◆ Lighted Range Hood
- ◆ 3-Burner High Output Range w/Oven
- ◆ Flip-Up Countertop Extension

PLUMBING & LP SYSTEMS

- ◆ Power Bath Vent
- ◆ Demand Water Pump
- ◆ Medicine Cabinet
- ◆ Skylight (FX-26 SO & FX-31 SS)
- ◆ Glass Shower Enclosure (FX-26 SO & FX-31 SS)
- ◆ Shower Curtain (FX-21 QB)
- ◆ Outside Shower (FX-26 SO & FX-31 SS)
- ◆ One-Piece ABS Tub Surround
- ◆ 6-Gallon Gas/Electric E.I. Water Heater (FX-26 SO & FX-31 SS)
- ◆ 6-Gallon Gas E.I. Water Heater (FX-21 QB)

SLEEPING

- ◆ Queen Bed - 60" x 80"
- ◆ Cabover Bunk
- ◆ Privacy Drape

ELECTRICAL & LIGHTING

- ◆ Dual Auxiliary Battery Upgrade (n/a Diesels)
- ◆ 30 Amp Power Cord
- ◆ 55 Amp Electronic Converter
- ◆ Auxiliary Battery
- ◆ GFI Circuit
- ◆ Coach Battery Disconnect
- ◆ Outside 120V Receptacle (DS)
- ◆ Patio Light*
- ◆ Outside Cable TV Hookup

HEATING & AIR CONDITIONING

- ◆ Wall Mounted Thermostat
- ◆ Electrical Heated Holding Tanks*
- ◆ Security Light (FX-26 SO & FX-31 SS)
- ◆ 30,000 BTU E.I. Ducted Furnace (FX-26 SO & FX-31 SS)
- ◆ 20,000 BTU Ducted Furnace (FX-21 QB)
- ◆ 13,500 BTU Ducted Roof A/C (FX-26 SO & FX-31 SS)
- ◆ 13,500 BTU Non-Ducted Roof A/C (FX-21 QB)
- ◆ 3.6 KW LP Onan Gen Quiet Lite (Diesel)
- ◆ 4.0 KW Gas Onan Gen Quiet Lite (Gas)

COCKPIT

- ◆ Wood Grain Dash panel (FX-26 SO & FX-31 SS)
- ◆ 2-Tone Pilot/Passenger Chairs
- ◆ Driver & Passenger Air Bags
- ◆ Deluxe Chassis Package
- ◆ Cruise Control
- ◆ Tilt Steering Wheel
- ◆ Dash Air Conditioning
- ◆ Emergency Start Switch
- ◆ Power Windows & Locks
- ◆ Tinted Windows (FX-26 SO & FX-31 SS)

EXTERIOR & CONSTRUCTION

- ◆ Freedom Roads Graphics
- ◆ Exterior Entrance Door Holder Magnet
- ◆ Deluxe Exterior Grab Handle
- ◆ Exterior Upgrade Mirrors
- ◆ Chrome Front Bumper
- ◆ Radial Tires

- ◆ Laminated Floor & Sidewalls
- ◆ Crowned, Laminated TPO Roof
- ◆ Aluminum Running Boards
- ◆ Single Entrance Step
- ◆ Rubber Entry Step Treads
- ◆ Dead Bolt Lock Entrance Door
- ◆ 80" Radius Entrance Door
- ◆ Sunchaser Patio Awning
- ◆ Full Metal Wheel Covers (FX-21 QB)
- ◆ Rear Mounted Roof Ladder (Black)
- ◆ Slide-Out Room Awnings (FX-26 SO & FX-31 SS)
- ◆ Spare Tire

SAFETY

- ◆ LP Leak Alarm
- ◆ Smoke Detector
- ◆ Carbon Monoxide Detector
- ◆ Fire Extinguisher

OPTIONS

- Front Bunk LCD TV/DVD/Bose System (FX-26 SO & FX-31 SS)
- 20" LCD TV w/DVD (Coach) (FX-21 QB)
- Automatic Power Entrance Step (FX-21 QB)
- Stainless Steel Wheel Inserts (FX-21 QB)
- Air Assist Suspension (FX-21 QB)
- 6.0L Diesel Engine - Ford (FX-26 SO)

■ FREEDOM ROADS PACKAGE

- (Mandatory Option)
- 20" LCD TV w/DVD (Coach) (FX-26 SO & FX-31 SS)
- Automatic Power Entrance Step (FX-26 SO & FX-31 SS)
- Stainless Steel Wheel Inserts (FX-26 SO & FX-31 SS)
- Air Assist Suspension (FX-26 SO & FX-31 SS)
- Front Cabover Window (n/a w/Front Entertainment Center Option)
- Comfort Sleep Number Mattress (FX-26 SO & FX-31 SS)

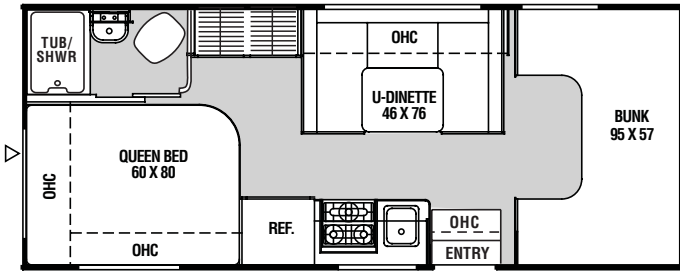
* Not available on Models shipped to Canada



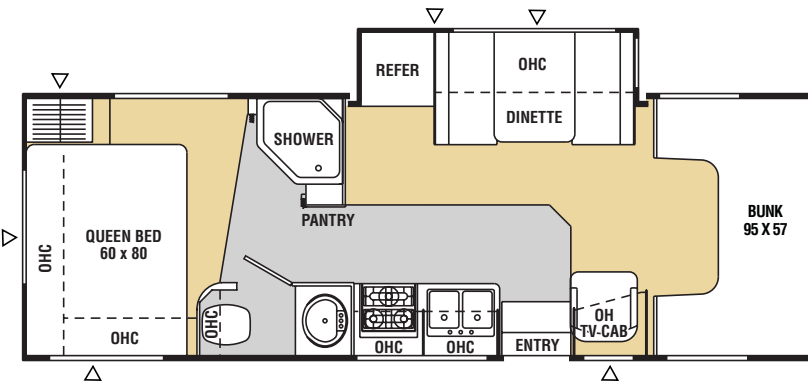
Freedom Express

by Coachmen

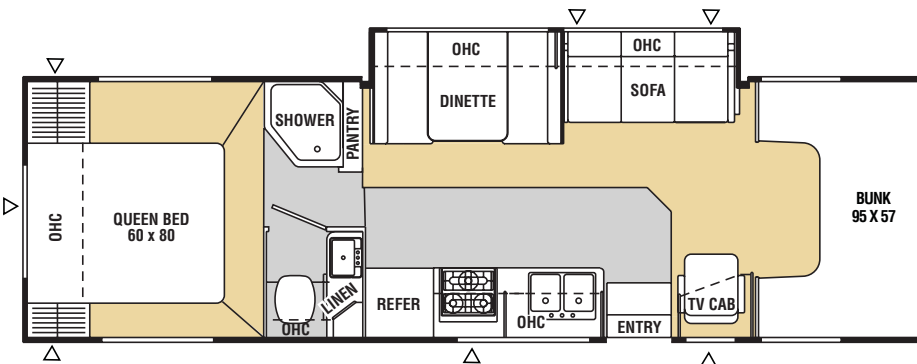
FLOORPLANS



FX-21 QB



FX-26 SO



FX-31 SS

FREEDOM XPRESS	FX-21 QB	FX-26 SO	FX-31 SS
Chassis	Chevy	Ford	Ford
Chassis Model	C-3500	E-45	E-45
Engine Size	6.0L	6.8L	6.8L
Wheel Base	159"	176"	208"
Rear Axle Ratio	4.10	4.56	4.56
Tire Size	LT225/75R16D	LT225/75R16E	LT225/75R16E
GVMR (lbs.)	12,300	14,050	14,051
CW (lbs.)	8,972	11,061	11,995
GAWR Front (lbs.)	4,300	4,600	4,600
GAWR Rear (lbs.)	8,600	9,450	9,450
GCWR (lbs.)	16,000	20,000	20,000
Exterior Length	23'8"	27'8"	31'11"
Exterior Height**	11'2"	11'2"	11'2"
Exterior Width	8'4"	8'4"	8'4"
Exterior Storage Capacity (Cu. Ft.)	102	112	113
Sleeping Capacity	5	5	6
Interior Width	8'	8'	8'
Interior Height	6'10-1/2"	6'10-1/2"	6'10-1/2"
Fuel Capacity (gal.)	35	55	55
Fresh Water Capacity (gal.)	50	50	50
Waste Water Capacity (gal.)	22	29	27
Grey Water Capacity (gal.)	37	29	28
Water Heater Capacity (gal.)	6	6	6
LP Gas Capacity (lbs.)	40	68	68
Furnace Rating (x1000) BTU	20	30	30

† Estimated

**Includes clearance for roof A/C

All information contained in this brochure is believed to be accurate at the time of publication. However, during the model year, it may be necessary to make revisions and Coachmen reserves the right to make all such changes without notice, including changes in prices, colors, materials, equipment and specifications, as well as the addition of new models and the discontinuance of models shown in this brochure. Therefore, please consult with your Coachmen dealer and confirm the existence of any materials, design or specifications that are material to your purchase decision.

Coachmen Recreational Vehicle Company, LLC

P.O. Box 30 ■ Middlebury, IN 46540

P.O. Box 948 ■ Fitzgerald, GA 31750

©2006 Coachmen Recreational Vehicle Company, LLC

All rights reserved. Litho in USA 11/06

GRAPHICS



Freedom Express Black



Freedom Express Blue



Freedom Express Burgundy



Freedom Express Yellow