

Alfa See-ya! Motorhomes 2008



Luxurious innovative design,

Alfa

Rich in value...

See Ya!
Founder Edition *By Alfa*



See Ya!
By Alfa



See Ya!
Gold



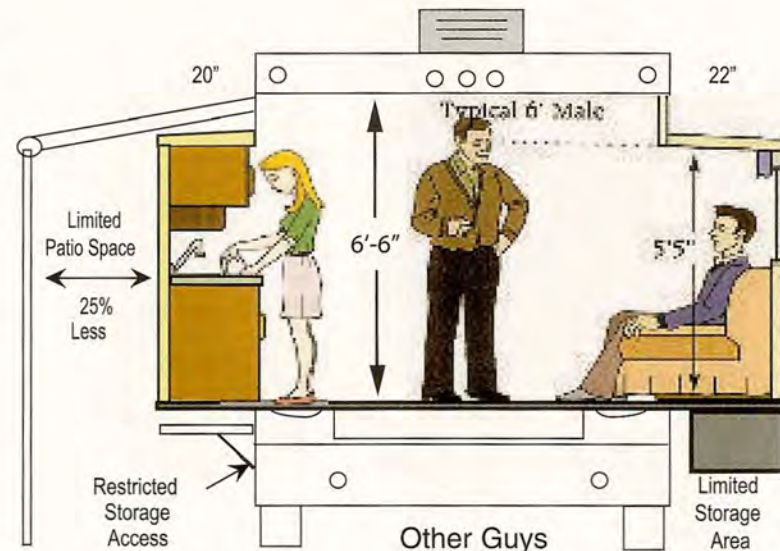
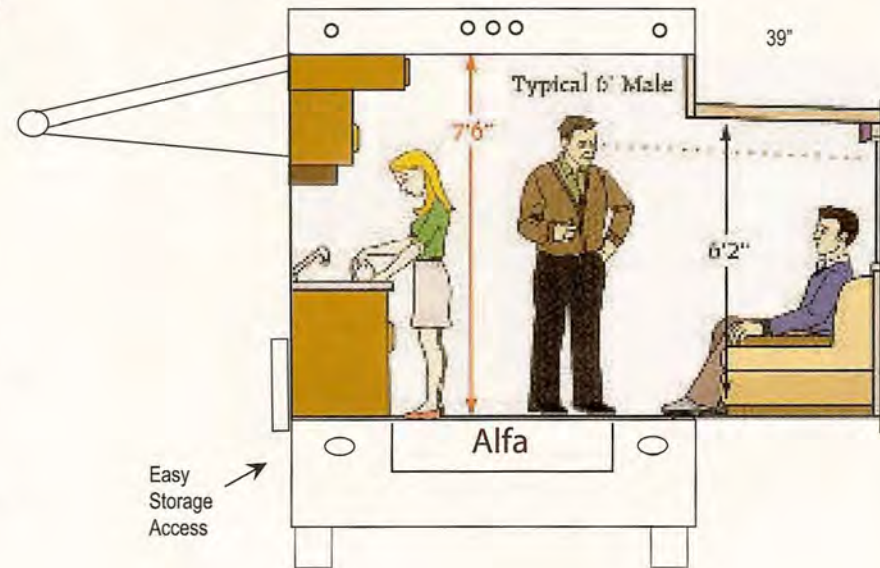
Making an RV Feel Like a Home

An RV is limited in space, and the challenge is to make a small house seem big. A design feature is the avoidance of cabin fever. Our innovative design solutions make an Alfa feel like a HOME.

- If a house is small, having high ceilings makes it feel bigger. In fact, a common design feature of more expensive homes is high ceilings. Alfas have the highest ceilings. Another feature of expensive homes is big windows. Any space seems bigger if it has a view, and the view out of an Alfa is unsurpassed. With higher ceilings and bigger windows, Alfa makes your RV feel like a home.
- An RV has logical height limits. If you want a taller interior, the solution is to take the air conditioners off the roof. Our main body interior headroom is 90 inches, without excessive exterior height, because we have basement air.
- The extra height in the main body is critical because it enables us to make the slide outs taller so you can walk in them, and so the tops of the windows can be higher. Your home feels better if, when standing, you are looking out the window at the surroundings instead of at a cabinet or wall 24 inches from your face.

Windows don't insulate as well as walls, so if you want to have a home with a view, the issue needs to be addressed. Alfas have thicker walls, rated at R11 instead of the industry standard of R7, for a 40% increase in thermal efficiency.

Air conditioning is best if the duct is bigger. Radiant heat beats on the roof, and the thicker the insulation, the more effective it is. Roof A/C units have roof ducts, and the ducts are smaller, inhibiting distribution. Roof ducts decrease the effectiveness of roof insulating value, and they aren't insulated well, thus enabling the radiant sun to sap the cool from the duct before the air gets to the interior. Basement air is thus clearly more efficient and effective than roof air.

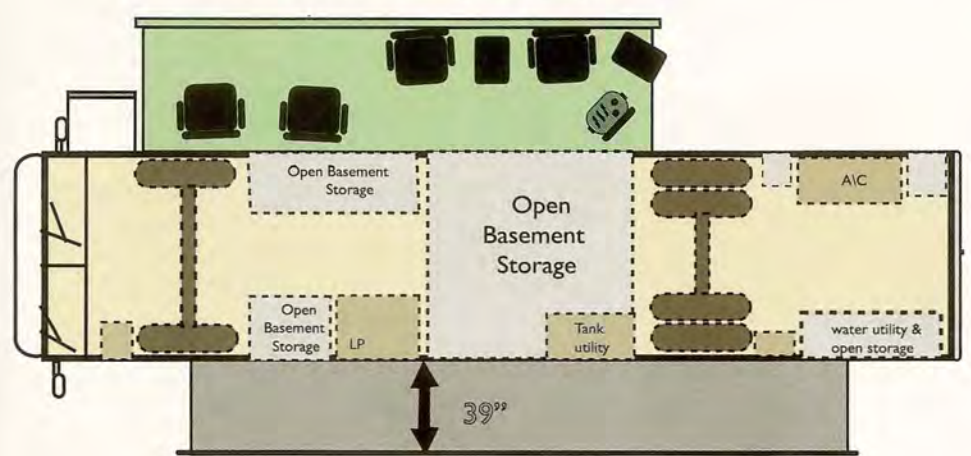


It's been said that
"An RV is the life support system for the patio"
Alfa's design ensures that the patio is part of your home.

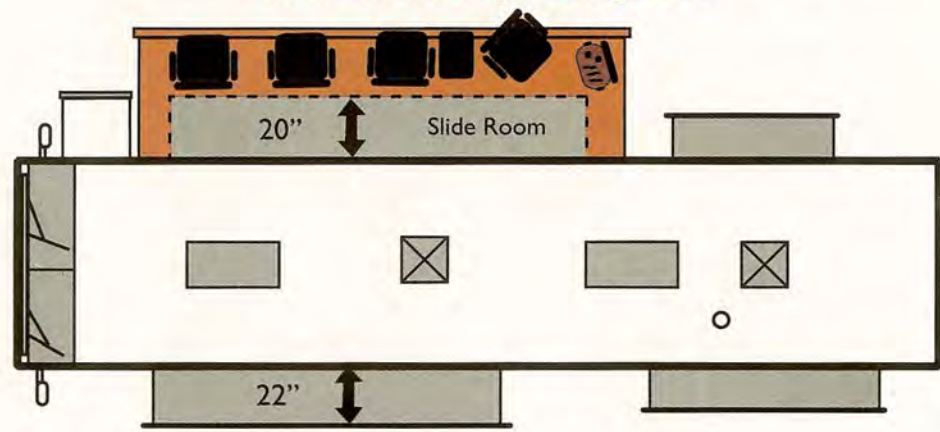
Alfas are designed for those who use their RV's on a frequent basis. Considering that a lot of the time spent in an RV is outside in the patio, we've made sure that your livability is enhanced in the patio area. While those "other RV companies" take room out of your patio by sticking opposing slides on the coach, directly cutting into your patio area, we believe that a single roadside slide is the best solution for livability. Alfa's single main slide-out room is up to 39" deep, giving you the livability of two slide-outs without the patio interference that two opposing slide-outs cause. A single slide-out also leaves the basement storage compartments easily accessible without the slide-out room above them. Also there is less moving parts to have potential problems with and it is easier to set up to use.

In an Alfa, the patio side of the coach is preserved for storage of items used on a daily basis, such as the BBQ, chairs, sporting gear, pet supplies, or whatever you normally store in the patio compartments.

TOP VIEW OF THE ALFA COACH
Unobstructed Awning Coverage Area



TOP VIEW OF COMPETITORS COACH
Obstructed Awning Coverage Area



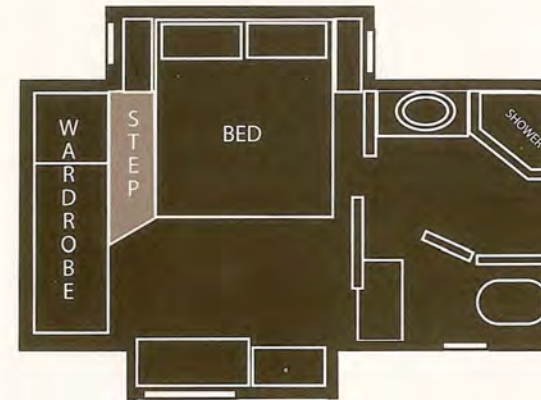
THE DISADVANTAGES OF DOUBLE LIVINGROOM SLIDE-OUT ROOMS

- Patio side slide takes up 20" of awning coverage and decreases access to actual storage.**
- Obstructed access to basement storage compartments**
- Patio slide unit cuts into patio limiting livability.**

Bedroom Suite, or Trip, Squeeze and Shuffle?

The Industry Standard Bedroom / Bathroom

The industry standard is to put the wardrobe at the rear of the coach, with the bed between the wardrobe and the bathroom. The floor between the bed and the wardrobe has to be higher because of the engine location. There is always a step up to this area. This puts you in an awkward position when hanging your clothes up or putting your clothes on after a shower. It also means that you or your unlucky partner have to navigate a treacherous step when making the bed or getting in and out of bed at night.



Alfa's Innovative Bedroom / Bathroom Designs

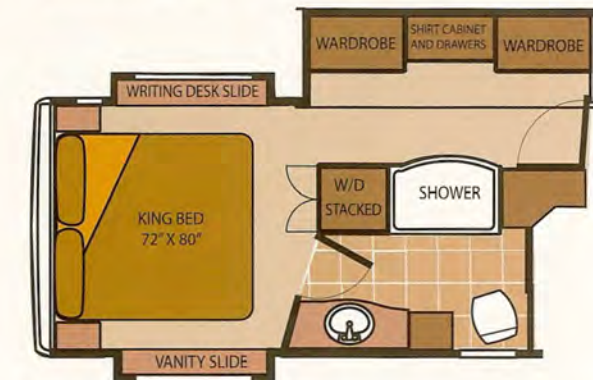
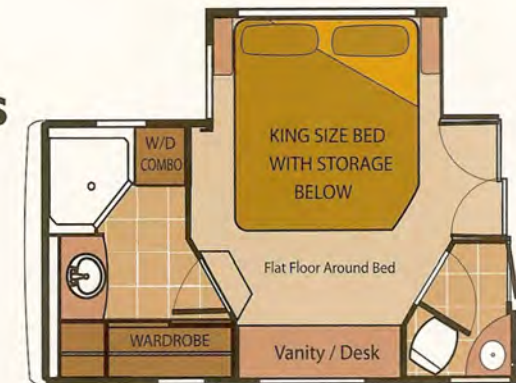
A flat floor all the way around the bed makes it easier to make.

It's also easier to get in and out of bed without the danger of falling down a step in the dark and less chance of disturbing your slumbering partner.

The wardrobe is always on one level floor so it is comfortable to access.

The washer/ dryer is located in a convenient place for putting your close away.

These designs also allow you to keep your bathroom private because you can get to your bedroom without having to use the it as a hallway.



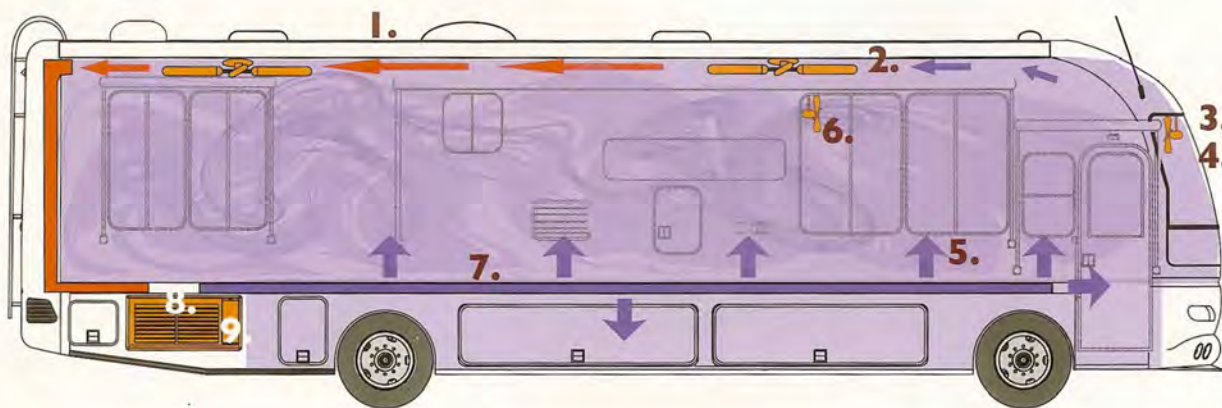
Efficient Air Conditioning & Thermally Developed MotorHome

The Solution is Basement Air.

Heat comes from the sun, and it comes in a radiant form, mostly on the roof. The best insulation is thickness.

The thicker something which insulates is, the better it insulates. So a thick roof with no duct in it is best.

R11 Walls are 40% more protection than the industry standard walls.



Blizzard Air Option Now Available



An optional roof mounted A/C for quick cool down in extremely hot temperatures

1. Insulate- Our thick roof provides solid insulation and no ducts in the roof make it 20% more effective. It's 5" thick in the center.

2. Circulate- Two ceiling fans help circulate the air, allowing you to get cooler, faster!

3. Protect- Snap on shades clips over the windshield to block the sun's rays while still allowing a view.

4. Isolate- For extreme conditions, electric shades covering the windshield can be used to create an insulation barrier of dead air.

5. Stack It Up! As the A/C pushes out cold air, the air stacks within the coach.

6. Direct the Air! Three fans direct a cool breeze to where you need it.

7. Let It Flow! Installing the duct in the floor enable a substantially bigger duct than any roof duct, because there is more room in the floor. The bigger the duct the better. Ours is biggest.

8. Smarter Placement A/C unit is placed next to the large air duct, allowing for direct air flow.

9. Strong Choice- Because our unit is mounted to a steel chassis, instead of placed on the roof, the A/C unit limits the amount of vibration, giving you a quieter coach. The other manufacturers' design their coaches with A/C mounted to the roof, which makes you feel as if you are living inside of a drum!

Drives Better - It's Quieter - And the Floor is Like Concrete

As a direct result of the See Ya's Lock Box design, coupled with our 2-3/8" thick walls, and one piece composite roof the Alfa is the strongest coach on the road today. This strong coachwork set atop the industry leading Lock Box Chassis/ Freightliner Technology gives you the best drive and quietest ride in the diesel market.



Less Noise

More effective cooling air moves best through big ducts, and it moves best if the run is straight. Our 6 3/8" floor structure gives us room for a duct up to twice as thick as other ducts, and the run is straight.

Better Cooling

This exclusive design reduces roof noise, provides a vault-like basement, and a floor so strong it reduces twisting, flexing and bump steer.

A Great Drive

Alfas drive better because of superior torsional rigidity. Bump steer is when the twisting and flexing ladder chassis changes the relationship of the axles to each other, which steers the coach. Our Lock Box significantly reduces this movement.

Driving is a complex and tiring job, and less bump steer makes an Alfa easier to drive. Bumps don't cause the coach to steer itself this way and that as much, and it makes driving less tiring. Alfa is the best driving motorhome on the market at any price.

The Perimeter Frame and Lock Box Technology

The perimeter frame is made using 6-3/8" steel angle with C-channel welded inside.

2" x 2" box tube is welded from side to side in the perimeter frame.

3 1/2" Z-bar is welded running front to back on top of the box tube.

5 Bulkheads are welded from front to back on the frame.

The frame is lowered over the Freightliner chassis with the bulkheads running along both sides.

The bulkheads are completed with steel members welded below the chassis rails, so the bulkheads completely surround the chassis.

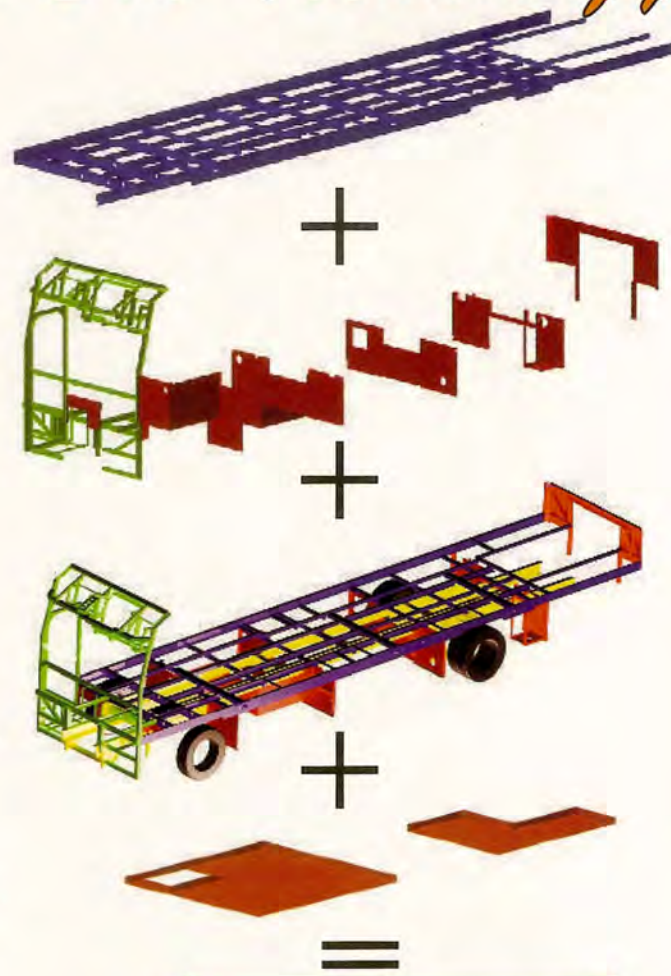
3" thick, steel framed, foam filled, vacuum bonded basement floor is then welded to bottom of bulkheads.

A CONCRETE LIKE FLOOR

While the industry standard is a floor surface on a 2" frame, Alfa's steel frame is 5 1/2" thick. Jump on any other coach floor, then jump on an Alfa's coach floor. You'll feel the difference! When standing in another motor home, you can feel the floor flex when someone walks by you. Even when sleeping, you sense the flexing floor and the movement transmitted throughout the coach. Our solid floor promotes a secure feeling.

A QUIET RIDE

The 6 3/8" floor structure, combined with the 3" structure at the bottom of the exterior storage areas between the wheels, plus the front bulkhead, blocks more road noise than the industry standard 2-inch floor and very thin 3/4" trunk bottom. Drive an Alfa and anything else, and you will hear the difference. It's nice to be able to just talk and not have to yell.



Main Floor, Frame, Chassis & Basement Floor 8

Standard Features Standard Features Standard Features Standard Features Standard Features Standard Features Standard Features

Features On All Models - Above The Industry Standard



32" Flat Panel Lcd Hd Tv In Livingroom
And A 26" Flat Panel Tv In Bedroom

The Tv's Lifts Up To Allow Access
To The Storage Behind Them



True Surround Sound Stereo System
With Dvd Player



Surround Sound And Coach Speakers



King Dome Automatic Satellite Dish
With Dual Lnb



Sirius Satellite Radio



Quad Lcd Color Monitor With Side And Rear View Cameras



2000 Watt Inverter

Standard Features For All Models

Electrical Systems – 7.5 KW Diesel Generator • 2000 Watt Xantrex Inverter W/ 100 AMP Charge • Eight Batteries: 6 Six Volt, 2 Twelve Volt • 170 AMP Alternator • 50 AMP 120V / 240V Power Distribution Panel • Hard-wired Power Cord 30 Ft 50 AMP • Battery Disconnect Switches • Systems Monitor Panel • Interior Located 12v Fuses for Convenient Easy Replacement

Drivers Cockpit – Four-Point Fully-Automatic Electric Leveling Jacks • Power Steering / Cruise Control • Tilt & Telescopic Steering Wheel Column • Color Back Up and Side View Cameras with Color LCD Monitor and One Way Speaker • Power Controlled Heated Exterior Mirrors • Variable Speed Dash Fans • Pilot and Copilot Lights • 12V Outlet • Rear View Mirror for Interior Viewing

Air Conditioning – 27,000 BTU Residential Style Basement Air Conditioning System with Heat Pump • Dual Pane Windows • Electronic Controlled Dash Heating and A/C System with Defroster • 35,000 BTU Furnace • In-floor Ducted Heating and Air Distribution System • Fan-tastic™ Fan In Living Room and Bathroom • Deluxe Ceiling Fan in Livingroom and Bedroom • Optioal Blizzard Air Conditioner Available

Interior Luxuries & Entertainment Systems – Roof Mounted Automatic Satellite Dish with Dual LNB • Cabinet Doors Throughout • Sleeper Sofa • Soft Touch Carpeted Ceiling • Overhead 32" LCD HDTV • 26" LCD TV in Bedroom • In Dash Stereo System with CD Player, Sirius Satellite Radio, Four Living Room, Two Bedroom and Two Basement Speakers • 5.1 Surround Sound Stereo System with Five Speakers and a Sub-Woofer

Galley Amenities – Refrigerator / Freezer with Ice Maker • 21" Oven with 3 Burner Range and Self Lighting High Output Burners • Space Saver Convection Microwave • Solid Surface Countertop with Stainless Steel Sink • Exclusive Interior/Exterior Pass Through Waste Basket System • Dinette Table • Demand Water System with Pump • Deluxe Single Lever Kitchen Faucet with Pull Out Sprayer • Water Filter with Faucet • Counter Flush Knife Rack Behind Stove • Paper Towel Holder with Travel Lock • Ceramic Tile From Entryway to Bathroom

Features On All Models - Above The Industry Standard



12 Cubic Foot Refrigerator



Space Saver Dish Washer in some models



Propane Quick Connect for BBQ



Integrated Rain Gutters



Water Filtration System



Four Point Fully Automatic Leveling System



Bedroom & Livingroom Ceiling Fans



Water Hose & Power Cord Storage

See-ya! & ^{See-ya!} GOLD Features - Because You Can't Live Without It



Blackbird GPS Navigation



50 Amp Surge Protector



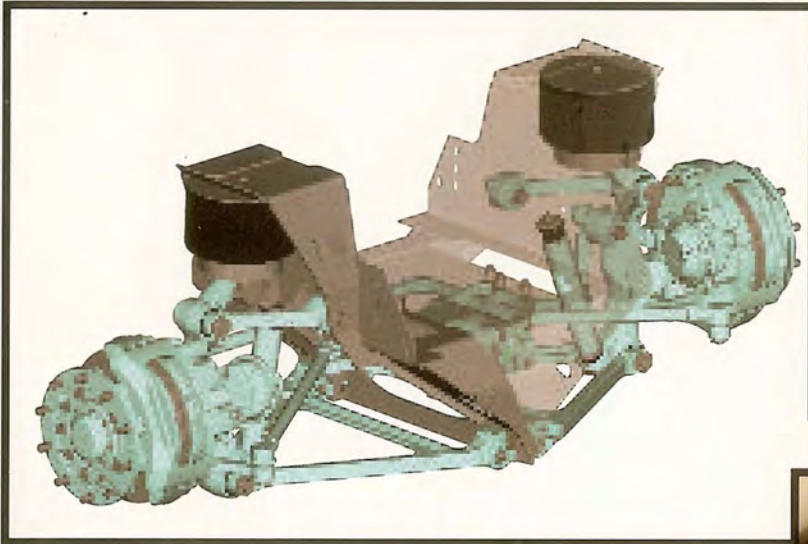
Basement Storage Trays with 20" LCD TV, BBQ, Refrigerator/Freezer, Folding Chairs and Tables and Ground Mats



CD Changer

See-ya!

GOLD Features - What More Could You Ask For



Independent Front Suspension



Front Disc Brakes



Adjustable Foot Peddles



Voltage Gauges for easy Viewing



Aluminum wheels



Heated Ceramic Tile



Sealed Burner Stove With Stove Cover



Garbage Disposal



Electric Power Cord Reel



Body Care Dispenser
Massage Shower Head



Electric Water Hose Reel

See Ya! & Gold Features

See Ya Features

Electrical Systems – 30' 50 AMP shore power cord • Electric Dump Valves • 50 AMP Surge Protector

Drivers Cockpit – Integrated Leather Driver / Passenger Seats • Smartwheel • Dual Electric Front Windshield Sun Visors • CB Ready With Antenna

Air Conditioning – Fan-tastic™ Exhaust Vent In Bathroom • Fan-tastic™ Fan In Living Room & Bedroom

Entertainment System – 20" LCD Patio TV • 26" LCD Bedroom TV • 26" LCD Galley TV • 6 Disc CD Changer • 4 Channel Stereo Amplifier • Preprogrammed Universal Remote Control • Four Living Room, Two Bedroom & Two Basement Speakers with 3 Volume Controls

Furniture – All Leather Sofa and Recliner with optional J-Lounge

Gold Features

Electrical Systems – Electric 50 AMP Power Cord Reel, Electric Water Hose Reel

Drivers Cockpit – Optima Leather™ Driver / Passenger Seats • Passenger Seat Foot Rest • Electric Driver & Passenger Side Sun Visor • Adjustable Foot Pedals

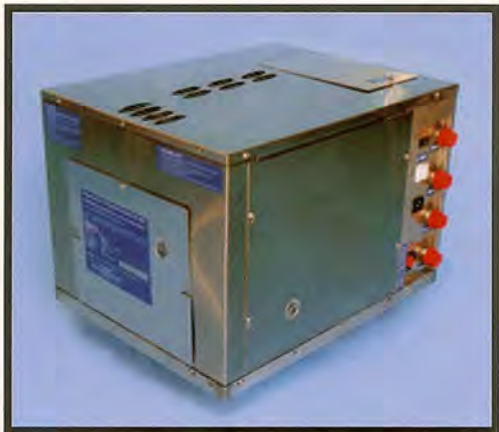
Entertainment Systems – In-Motion Tracking Roof Mounted Satellite Dish with Dual LNB

Interior Luxuries – Twin Temp Heating System with Continuous Hot Water and Heated Tile for Radiant Heat • Optima Leather™ Recliner • Optional J-Lounge

Galley Amenities – 14 CF Side-by-Side Refrigerator/Freezer with Ice Maker • Brushed Stainless Steel Refrigerator Door Panels • Heated Ceramic Tile with Decorative Accents in Galley and Bath • Deluxe Convection Microwave Oven • Dinette Table with Leaf

Cabinet Construction – Solid Wood Face Frames Throughout • Arched Raised Panel Doors

The See Ya! GOLD, provides the best in...



- **Near Silent Heating Luxury**
- **Unlimited Hot Water**
- **Heated Tile Floor**

Benefits of this efficient heating/hot water unit include:

Whisper quiet. This heater does not disturb you when you're sleeping or watching TV! - The system cycle is nearly silent. Conventional Furnaces are so noisy, and the cycles are maddening.

Endless supply of hot water on demand - You never again have to take a cold shower, or unknowingly wash clothes with cold water.

Silent radiant heat for moderate needs - In moderately cold temperatures, the unit will heat the floor tiles, which then heat the entire coach. A totally silent European type of radiant heat system.

Thermostat in both living room and bedroom - Enables zone heating for personal comfort, and propane saving energy efficiency.


Propane fueled - There is no distinguishing smell of diesel. Plus clean burning propane eliminates the need for yearly maintenance service schedules that diesel powered units require.

5 times more efficient than typical gas and electric tank type RV water heaters!

Plus you have two hot water systems and two heating systems for fail safe security - The Alfa Gold also has a conventional heater and water heater for back up.


Cummins Diesel Engines

SEE-YA!
FOUNDER EDITION




CUMMINS ISB 350
350HP/750lb-ft @ 1600 with Variable Geometry Turbocharger provides exhaust braking

SEE-YA!



CUMMINS ISC 360
360HP/1050lb-ft @ 1400 with Variable Geometry Turbocharger provides exhaust braking

SEE-YA!
GO LD



CUMMINS ISL 425
425HP/1200lb-ft @ 1300 rpm with C-Brake by Jacobs provides Engine braking



Freightliner XC Raised Rail Chassis

60° WHEEL CUT
55° WHEEL CUT*



- Freightliner Custom Chassis
- Many Competitors' Chassis

60-Degree Wheel Cut on chassis equipped with Independent Front Suspension
55-Degree Wheel Cut on chassis equipped with AAC Wide Track Front Axles

Freightliner XC Raised Rail Chassis

Common

Air Conditioning Compressor R-134A and Condenser • Air Cleaner Restriction Indicator • 18.7 CFM Air Compressor with Heated Air Dryer • Allison 3000MH 6 Speed Automatic Transmission with Push Button Shift Control • 170 Amp Alternator • 2 Alliance 12V Batteries • Dual Air Tanks with Automatic Moisture Ejectors • Cruise Control • Daytime Running Lights • Fuel / Water Separator • Electric Automatic 4 Point Leveling Jacks • Multiple Module Data Computer Information Center with Lcd Display • Neway Air Ride Suspension with Manual Deflation Valve and Sachs Shock Package • Rear Mounted 1191 Square-Inch Radiator • Tran-Synd Transmission Fluid • 1000 Watt / 115 Volt Block Heater

See-Ya! Founder Edition

CHASSIS - Freightliner XC Raised Rail Chassis - G.V.W.R.- 29,500# • **FRONT AXLE** - Meritor Front Axle I-beam Wide Track - Capacity:10,500 Lbs • **REAR AXLE** - Meritor Rear Axle - Capacity:19,000 Lbs. • **BRAKES** - Full Air Over Drum 15" x 4" Front & 16.5" x 7" Rear with Auto-Slack Adjusters And ABS • **ENGINE** - Cummins ISB 325 HP • **ENGINE BRAKE** - VG TurboCharger • **FOOT PEDALS** - Stationary Foot Pedals • **FUEL TANK** - 90 Gallon Fuel Tank • **SUSPENSION** - Trailing Arm - Newway Air Suspension • **TIRES** - 255/80R22.5 Size Tires - Load Range G • **WHEEL BASE** - 35' - 228" / 40' - 266" • **WHEEL CUT** - 55 Degree Wheelcut - On Front Steering In Both Directions • **WHEELS** - Steel with Polished Hub Caps

See Ya!

CHASSIS - Freightliner XC Raised Rail Chassis - G.V.W.R.- 32,000# • **FRONT AXLE** - Meritor Front Axle I-beam Wide Track - Capacity:12,000 Lbs • **REAR AXLE** - Meritor Rear Axle - Capacity:20,000 Lbs. • **BRAKES** - Full Air Over Drum 15" x 4" Front & 16.5" x 7" Rear With Auto-Slack Adjusters And ABS • **ENGINE** - Cummins ISC 360 HP • **ENGINE BRAKE** - VG Turbocharger • **FOOT PEDALS** - Stationary Foot Pedals • **FUEL TANK** - 100 Gallon Fuel Tank • **SUSPENSION** - Trailing Arm - Newway Air Suspension • **TIRES** - 275/80R22.5 Size Tires - Load Range G • **WHEEL BASE** - 40' - 266" • **WHEEL CUT** - 55 Degree Wheelcut On Front Steering In Both Directions • **WHEELS** - Steel With Polished Hub Caps

See Ya! Gold

CHASSIS - Freightliner XC Raised Rail Chassis - G.V.W.R.- 34,320# • **FRONT AXLE** - ZF Independent Front Suspension - Capacity:14,600 Lbs • **REAR AXLE** - Meritor Rear Axle - Capacity:20,000 Lbs. • **BRAKES** - Front-Full Air Over 17" Disk / Rear-Full Air Over Drum With Auto-Slack Adjusters And ABS • **ENGINE** - Cummins ISL 425 HP • **ENGINE BRAKE** - C-brake From Jacobs • **FOOT PEDALS** - Adjustable Foot Pedals • **FUEL TANK** - 150 Gallon Fuel Tank • **SUSPENSION** - ZF IFS Independent Air Ride Suspension • **TIRES** - 275/80R22.5 Size Tires - Load Range H • **WHEEL BASE** - 40' - 266" • **WHEEL CUT** - 60 Degree Wheelcut On Front Steering In Both Directions • **WHEELS** - Aluminum With Valve Extensions

2008 Model Specifications

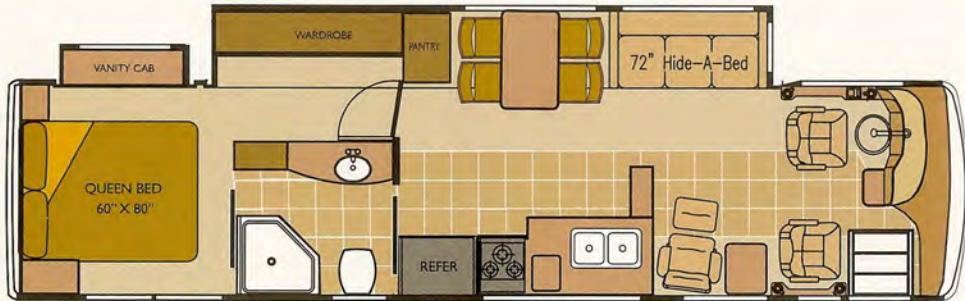
	SEE-YA! GOLD			SEE-YA!			SEE-YA! FOUNDER EDITION			
	1008 SYG40LS	1015 SYG40LSSB	1018 SYG40LSXL	1007 SY40LS	1014 SY40LSSB	1017 SY40LSXL	1009 SYFE35LS	1011 SYFE40LS	1013 SYFE40LSSB	1016 SYFE40LSXL
Weights in Pounds										
FGAWR	14,320	14,320	14,320	12,000	12,000	12,000	10,500	10,500	10,500	10,500
RGAWR	20,000	20,000	20,000	20,000	20,000	20,000	19,000	19,000	19,000	19,000
GVWR	34,320	34,320	34,320	32,000	32,000	32,000	29,500	29,500	29,500	29,500
UVW	29,400	27,520	N/A	26,840	26,850	N/A	23,500	24,800	25,120	N/A
GCWR	44,320	44,320	44,320	42,000	42,000	42,000	39,500	39,500	39,500	39,500
Measurements										
Overall Length	39'-11"	39'-11"	41'-3"	39'-11"	39'-11"	41'-3"	36'-7"	39'-11"	39'-11"	41'-3"
Overall Height	13'-1"	13'-1"	13'-1"	13'-1"	13'-1"	13'-1"	13'-1"	13'-1"	13'-1"	13'-1"
Exterior Width	102"	102"	102"	102"	102"	102"	102"	102"	102"	102"
Interior Height	7'-6"	7'-6"	7'-6"	7'-6"	7'-6"	7'-6"	7'-6"	7'-6"	7'-6"	7'-6"
Interior Width	95"	95"	95"	95"	95"	95"	95"	95"	95"	95"
Wheel base	266"	266"	266"	266"	266"	266"	228"	266"	266"	266"
Tank Capacities in Gallons										
LP Tank	38	38	38	38	38	38	25	25	25	25
Fuel Tank	150	150	150	100	100	100	90*	90*	90*	90*
Water Heater	10	10	10	10	10	10	10	10	10	10
Fresh Water	100	100	100	100	100	100	100	100	100	100
Gray Tank	73	73	73	73	73	73	73	73	73	73
Black Tank	37	37	37	37	37	37	37	37	37	37

*All weights, measurements and capacities are approximate **Heights may vary due to vehicle loading ***Weights are best estimate at time of printing

2008 Motorhome Floorplans

See-Ya! Founder Edition

Model # 1009 - SYFE35LS



See-Ya! Founder Edition

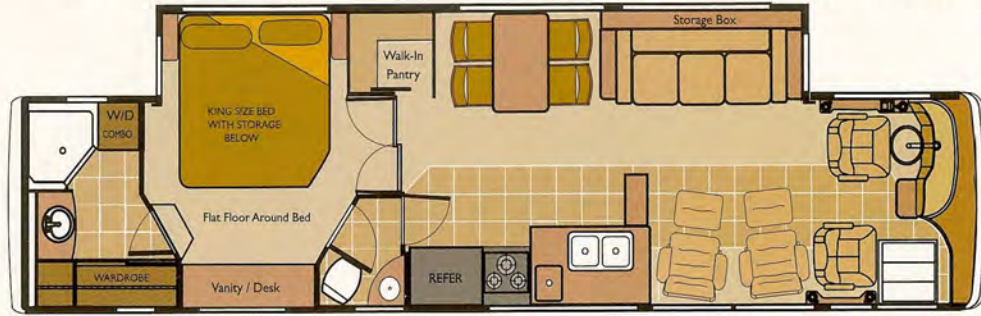
Model # 1013 - SYFE40LSSB

See-Ya!

Model # 1014 - SY40LSSB

See-Ya! GOLD

Model # 1015 - SYG40LSSB



See-Ya! Founder Edition

Model # 1011 - SYFE40LS

See-Ya!

Model # 1007 - SY40LS

See-Ya! GOLD

Model # 1008 - SYG40LS



See-Ya! Founder Edition

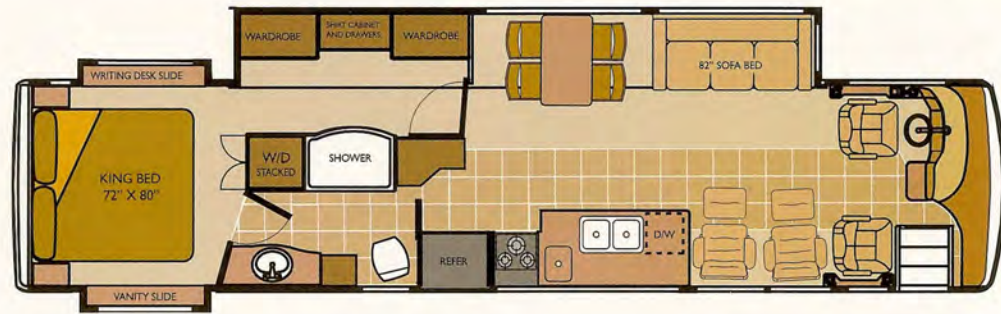
Model # 1016 - SYFE40LSXL

See-Ya!

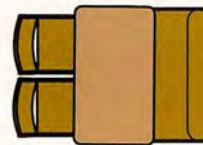
Model # 1017 - SY40LSXL

See-Ya! GOLD

Model # 1018 - SYG40LSXL



Booth Dinette Option



Half Booth &
Half Free Standing Dinette Option



J-Lounge Option