

# 2009 ALLURE 400 SERIES



THE WORLD'S FINEST MOTORCOACHES



COUNTRY COACH





## Table of Contents

- 2-9** Photos and specifications for the 2009 Allure 430 and 470
- 10-14** 45' Crane Prairie article
- 15** Interior choices
- 16** Exterior choices
- 17** Seating Arrangements
- 18-20** Floorplans
- 21-28** Founders Edition specifications





40' Hood River floorplan with Trevi interior and medium cherry cabinetry



Trevi interior and medium cherry cabinetry with queen bed

2009 ALLURE 400 SERIES SPECIFICATIONS 2009 ALLURE 400 SERIES

**430**  
**470**

### Chassis Specifications

- ● **DynoMax® chassis:** semi-monocoque construction of 8" x 3" x 1/4" steel-tube with welded components
  - 10,000 lb receiver hitch with electrical connector and chrome cover (37', 40' and 42')
  - 2-year/unlimited mile chassis warranty
- X ● 15,000 lb receiver hitch with electrical connector and chrome cover (45' only)
- ● **37', 40' and 42' chassis:**
  - GVWR - 47,600 lbs, GCWR - 57,600 lbs
- X ● **45' chassis:** GVWR - 47,600 lbs, GCWR - 62,600 lbs
- X ● **Wheelbase:** 37' - 219", 42' - 279"
- ● **Wheelbase:** 40' - 243"
- X ● **Wheelbase:** 45' - 296"

**430**  
**470**

- ● **Powertrain:** Caterpillar® C9 engine paired with Caterpillar CX28 transmission, producing 425 HP at 2300 RPM and 1350 ft-lbs torque at 1400 RPM (meets 2007 EPA emissions requirements)
  - Engine features -*
    - 9.3 liters (567 cubic inches)
    - Caterpillar multi-stage engine brake with brake light activation
  - Electronic Control Module (ECM)
  - Alternator: 160 amps
  - Alternator: 200 amps (with electric refrigerator option)
  - Hydronic engine block preheat
  - Sight glass for coolant tank
  - 5-year/200,000-mile engine warranty
- Transmission features -*
  - Caterpillar CX28 transmission with PTO
  - Six speed automatic
  - Keypad electronic shifter with digital display
  - 5-year/200,000-mile transmission warranty

**430**  
**470**

- ○ **Powertrain:** Cummins® ISL engine paired with Allison 3000 MH transmission, producing 425 HP at 2200 RPM and 1200 ft-lbs torque at 1300 RPM (meets 2007 EPA emissions requirements)
  - Engine features -*
    - 8.9 liters (543 cubic inches)
    - 2-stage engine brake with brake light activation
  - Electronic Control Module (ECM)
  - Alternator: 160 amps
  - Alternator: 200 amps (with electric refrigerator option)
  - Hydronic engine block preheat
  - Sight glass for coolant tank
  - 5-year/100,000-miles engine warranty
- Transmission features -*
  - Allison 3000 MH transmission with PTO
  - Six speed automatic with two overdrive gears
  - Keypad electronic shifter with digital display
  - 5-year/unlimited-mile transmission warranty (with TranSynd™ fluid)

2009 ALLURE 400 SERIES SPECIFICATIONS 2009 ALLURE 400 SERIES

**430**  
**470**

- X ● **Powertrain (45' Crane Prairy only):** Cummins® ISM engine paired with Allison 4000 MH transmission, producing 500 HP at 2000 RPM and 1550 ft-lbs torque at 1200 RPM. (Meets 2007 EPA emissions requirements)
  - Engine features -*
    - 10.8 liters (661 cubic inches)
    - 2-stage engine brake with brake light activation
    - Electronic Control Module (ECM)
    - Alternator: 200 amps
    - Engine oil reservoir
    - Hydronic engine block preheat
    - Sight glass for coolant tank
    - 5-year/100,000-mile engine warranty
  - Transmission features -*
    - Allison 4000 MH transmission with PTO
    - Six speed automatic with two overdrive gears
    - Keypad electronic shifter with digital display
    - 5-year/unlimited-mile transmission warranty (with TranSynd™ fluid)
- ● **Driveline (37', 40' and 42'):** Dana Spicer® SPL 170 series
- X ● **Driveline (45'):** Dana Spicer® SPL 250 series
- ● **Drive axle (37', 40' and 42):** Dana® with 4.78 differential ratio
- X ● **Drive axle (45):** Dana® with 4.30 differential ratio

**430**  
**470**

- ● **Suspension:**
  - *Front* - Reyco Granning 1660 independent front suspension with double wishbone construction and full air suspension system, anti-sway bar, and Koni® shock absorbers
  - *Rear* - Ridewell drive and tag axle (raise/lower) air suspension system with six air springs and Koni shock absorbers
- ● **Service brakes:** Full air disc brakes with ABS, Automatic Traction Control (ATC) (17" x 1.75" air discs on all axles)
- ● **Steering:** Fully-integral, full-time hydraulic power steering gear with tilt and telescoping steering column
- ● Electronic cruise control
- ● Williams Controls adjustable position throttle and brake pedals
- ● **Tires:** Steel-belted radials 315/80R x 22.5"
- ● **Wheels:** 9" x 22.5" aluminum-alloy wheels at all positions
- ● **Battery:** Two group 31 engine cranking batteries with 12-volt disconnect
- ● **Fuel capacity:** 135 gallons (dual fuel fills, driver and passenger sides)
- ● **Service center:** diagnostic reader ports, circuit breakers and chassis battery disconnect

**430**  
**470**

### Construction Highlights

- ● **Exterior width:** 102"
- ● Steel-tube cage structure
- ● Vacuum-bonded walls and floor with 1-1/2" expanded polystyrene insulation
- ● R16-value roof insulation
- ● Fiberglass exterior with aluminum skirts and insulated compartment doors
- ● One-piece molded fiberglass roofcap
- ● **Exterior riding height:** 12' 10" (including roof air; height varies with satellite option)
- ● **Finished interior height:** 85"
- ● Sound and vibration dampening material throughout
- ● Laminated composite floor (two forward slide-outs)

### Driver Compartment Amenities

- ● 6-way power-adjustable driver and passenger seats with 3-point restraint and adjustable arms
- X ● Driver sliding seat cushion and passenger seat power footrest
- X Massage/heated driver and passenger seats with adjustable headrests, driver sliding seat cushion and passenger seat power footrest



430  
470

- Massage/heated driver and passenger seats with adjustable headrests
- Villa 6-way power-adjustable driver and passenger seats with 3-point restraint and adjustable arms, driver sliding seat cushion and passenger seat power footrest (required for Canada)
- ● Custom contoured dash and overhead
- ● Burlwood dash panel
- ● **Medallion gauges include:** speedometer (with digital display for speedometer, odometer, trip odometer, and transmission temperature), tachometer, air pressure, oil pressure, volt meter, water temperature and fuel level
- SilverLeaf® VMS 240 CL travel information center with auto generator, auto temperature control, and double-DIN stereo rear-view monitor
- SilverLeaf VMS 240 CL digital engine monitor/travel information center with auto generator start and auto temperature control
- Garmin® GPS navigation system with XM Smart Antenna and Bluetooth® interface (Allure 430 requires dash stereo option) (XM weather, XM traffic, and XM radio available with subscription)
- Color rear-view monitor
- Kenwood® AM/FM radio and CD player with remote 10-disc CD changer
- Double-DIN color rear-view monitor with AM/FM/satellite radio stereo and compact disc controls with remote 10-disc CD changer, MP3 player input, and two speakers
- Side-view cameras with dash display (Allure 430 requires double-din stereo option)
- ● Side view mirror power controls
- ● Cup holders
- ● Single-piece wrap-around windshield with shade band
- Powered driver's toll window
- ● Radial single-motor windshield wipers with delay and washers
- ● Heating/cooling/defrost unit in dash
- ● Two 12-volt dash overhead mounted 2-speed fans
- ● Powered roller day/night shade system with solar protection and total light-blocking capabilities
- ● Dual map lights
- ● Passenger-side control panels with step slide cover, porch light, ceiling lights, entry step, and domestic battery disconnect switches with battery switch indicator lamp
- ● 18" SmartWheel® leather-wrapped steering wheel with controls for horn, head light flash, marker light flash, cruise functions, and wiper functions
- ● Compass with exterior temperature indicator
- SmarTire® II tire monitoring system
- ● Tile entry landing
- ● Tile flooring around driver's area
- Tiled entry stepwell
- ● Entry door interior assist grip

430  
470

### Front Entertainment

- ● 32" LCD high definition TV in overhead dash with five ceiling speakers and subwoofer (floorplan dependent)
- 37" LCD high definition TV in overhead dash with five ceiling speakers and subwoofer (floorplan dependent)
- ● 52" LCD high definition mid-coach TV (45' only)
- ● Yamaha® digital home theater system with XM radio, DVD player, and 5.1 surround sound
- Digital video recording system
- ● Pre-wired for satellite dish
- Stationary satellite system or In-motion satellite system
- In-motion satellite system and high definition receiver in living room (includes additional receiver in bedroom)
- Universal RF remote (pre-programmed)
- Additional universal remote

### General Conveniences

- ● Choice of four interior design themes: Ella, Trevi, Kallista and Tribeca
- ● Custom crafted, stained and lacquered oak cabinetry and woodwork
- Choice of cabinetry:**
  - Light cherry
  - Medium cherry
  - Hickory
  - Maple
  - Walnut
- ● Raised panel cabinet doors
- ● Decorative knobs and pulls
- ● Padded vinyl ceiling
- Custom interior décor kit (preset)
- ● Halogen lighting throughout
- ● Intellitac remote switching system with light dimming feature
- Elliptical ceiling light fixtures with etching (non-dimming)
- ● Decorative window boxes in living room, dining area, and bedroom with wood sill (pleated day/night black-out shades in living area)
- Radiant floor heating in galley and bath
- Tile pattern upgrade
- Washer/dryer combo
- Stacked washer and dryer
- ● Glassware cabinet
- Storage cabinet with stained glass door (replaces glassware cabinet)
- ● Telephone jacks (two in living area, one in bedroom and one in storage bay)
- ● Stepwell light
- ● Power step slide cover
- ● Burglar alarm (inside/outside protection) with key fob controlled keyless entry
- ● Smoke detector
- ● Carbon monoxide detector
- ● Fire extinguisher
- LP gas detector
- ● LP gas detector with auto shut-off
- ● Coach Information Kit: Owner's Guide, OEM manuals, chassis parts list

430  
470

- ● Emergency Roadside Service (first year paid by Country Coach)
- Factory delivery
- Ultimate factory delivery

### Living Room Amenities

- ● **Choice(s) of the following:**
  - Fold out sofaed
  - Hide-away sofaed
  - Euro recliner with ottoman and occasional table (floorplan dependent)
- Choice(s) of the following options:**
  - J sofaed
  - Office suite desk and Euro recliner with ottoman
  - Hide-away sofaed on passenger side
- Computer table with charging center (replaces occasional table)
- Air mattress in hide-away sofaed
- Upgrade fabric upholstered sofa to Ultraleather®
- ● Wall sconce lighting with dimmers
- ● Carpet
- Sculpted carpet
- Full tile floor
- Radiant floor heating (available with full tile floor option)

### Galley/Dining Area Amenities

- ● Polished solid-surface countertops with edge detail
- Solid-surface splashguard located at forward end of countertop
- Full tile backsplash
- ● Large recessed, double stainless steel sink with solid-surface covers and single-lever faucet with pull-out sprayer
- Double-bowl solid-surface sink or Single-bowl solid surface sink with solid-surface covers and single-lever faucet with pull-out sprayer
- Fan-Tastic Vent® fan with rain sensor, automatic vent, remote switch and double dome
- ● Fan-Tastic Vent thermostatically-controlled, variable-speed fan with rain sensor, insulated cover, and dome stop switch
- ● Norcold® 12 cu ft 2-way refrigerator with icemaker and wood panel doors (floorplan dependent)
- Norcold 12 cu ft 2-way refrigerator with ice maker, water dispenser, and wood panel doors (floorplan dependent)
- Jenn-Air® 22 cu ft two door side-by-side electric refrigerator/freezer with AGM batteries, 200 amp alternator, and 3000-watt solid state Xantrex® RS3000 true sine wave inverter/converter (floorplan dependent)
- ● Microwave/convection oven with power hood
- Advantium® Speedcook microwave/convection oven with power hood
- ● Recessed 2-burner gas cooktop with solid surface cover
- SHARP® microwave (required for Canada)
- ● Storage for sink and stove covers
- Drop-in 3-burner LP gas cooktop with 17" LP gas oven

430  
470

- Stainless steel appliance package (refrigerator door and Advantium® oven)
- ● Wood window box with mini blinds on galley window
- ● **Dining area seating variations:**
  - Wall cabinet and wall-mounted dining table with fore and aft slide mechanism
  - Two chairs
  - Wall-mounted café dinette
- Two additional folding chairs
- Sleeper café dinette
- U dinette booth
- L dinette booth (45' only)
- ● Tile flooring on main floor and carpet in slide-out rooms

### Bath Amenities

- ● Full rear bath and mid-coach half bath (45' only)
- ● Polished solid-surface countertop with edge detail
- ● Full tile backsplash
- ● Porcelain vanity sink with coordinating fixtures
- Solid-surface vanity sink(s)
- ● Decorative vanity light bar
- ● Vanity overhead with mirrored doors
- ● Towel ring at each vanity sink, towel bar, and toilet tissue holder
- ● Etched glass shower enclosure
- ● Insulated skylight above shower
- ● Light in shower
- Tub/shower combination (floorplan dependent)
- ● Tecma china toilet
- ● Water pump switch
- Fan-Tastic Vent® fan with rain sensor, automatic vent, remote switch, and double dome
- ● Fan-Tastic Vent thermostatically-controlled, variable-speed fan with rain sensor, insulated cover, and dome stop switch
- ● Hand-held pressure-balanced shower unit
- ● Hardwood, raised panel pocket doors
- ● Tile flooring
- ● Mini-blinds with fabric valance on bath window

### Bedroom Amenities

- ● Queen bed 60"x77"
- California queen bed 66"x77" (floorplan dependent)
- King bed 72"x77" (floorplan dependent)
- Air chamber mattress
- ● Clothes dresser with drawers
- Upholstered headboard
- ● Bedspread with three décor pillows
- ● Two nightstands with solid-surface countertops
- ● Wardrobe with lighting and cedar panel on wardrobe shelf
- ● Decorative window boxes with wood sill (pleated day/night black-out shades)
- ● Wall sconce lighting with dimmer
- ● 26" LCD high definition TV
- 32" LCD high definition TV

430  
470

- ● Mini home theater system with DVD player, radio, and 5.1 surround sound with five ceiling speakers and subwoofer
- Safe with combination lock
- ● Telephone jack
- ● Carpet
- Max storage

### Heating and Cooling Systems

- ● **Temperature control center controls the following:**
  - Diesel-fired 50,000 BTU Aqua-Hot® 525 hydronic heating system
  - Two 15,000 BTU low-profile roof air conditioners with heat pumps, remote condensation pump, and drain lines
- ● Driver area over-the-road heating/cooling/defrost system with dual zone, single blower, and driver controls (40,000 BTU heating and 17,000 BTU cooling)
- Driver area over-the-road heating/cooling/defrost system with driver controls (45,000 BTU heating and 17,000 BTU cooling)
- Third roof air conditioner with heat pumps (with upgrade to Onan® 10 kW generator) (floorplan dependent)

### Power Sources

- ● 12-volt battery boost system
- ● Automatic low-voltage generator start
- ● 60-amp chassis battery-charge system
- ● Onan 8.0 kW "quiet" liquid-cooled diesel generator with remote start/stop, on electric roll-out
- Onan 10 kW "quiet" liquid-cooled diesel generator with remote start/stop, on electric roll-out, with third roof A/C option
- ● Xantrex RS2000 true sine wave inverter/converter with power factor corrected 100-amp charger (floorplan dependent)
- 3000-watt solid state, Xantrex RS3000 true sine wave inverter/converter with power factor corrected 150 amp charger (with electric refrigerator option)
- ● 12-volt interior disconnect switch
- ● Two 8D wet cell domestic deep cycle batteries (floorplan dependent)
- Two AGM 8D domestic deep cycle batteries (floorplan dependent)
- Four AGM 8D domestic deep cycle batteries (45' only)
- 50-amp shore cord on manual reel with 30-amp adaptor
- ● 50-amp shore cord on power reel with 30-amp adaptor
- ● 50-amp shore service surge protector

430  
470

### Plumbing Features

- ● **Stainless steel-faced, heated plumbing bay includes:**
  - Retractable, cold water hand-held spray fixture
  - Pressure regulated city-water to water-tank fill
  - Fresh-water low-point drain valve
  - Dump valves
  - Sewer-hose, hose adapter, and storage for both
  - Hot and cold faucet
  - Soap dispenser
  - Four LED lights
  - Lighted logo
  - Telephone and cable TV hook-ups
- ● Aqua-Hot® 525 hydronic water heating system with electric back-up
- ● 12-volt on-demand water pump
- ● Three water pump switches located in plumbing bay, galley, and bath
- ● Black and gray water tank flush system
- ● Total house water filtration system
- ● Pre-plumbed and pre-wired for washer/dryer
- ● Tank monitoring system and monitor panel with water pump switch
- RV Sani-Con® tank drain system

### Tank Capacities

- ● 95 gallon fresh-water
- ● 65 gallon gray-water
- ● 45 gallon black-water
- ● 15 gallon LP
- ● 135 gallon fuel

### Exterior Conveniences

- ● Powder-coated steel frame structure entry door with auto-hold, deadbolt, key fob keyless entry, and screen door
- ● Lighted entry door assist grip
- ● Patio light
- ● Electric entry doorstep with automatic override at ignition
- ● **Carefree® standard awning packages:**
  - LTD window awnings
  - Summit slide-out covers over bedroom slide-outs, and DS living room slide-out
  - Kover II slide-out cover for PS living room/galley slide-out
  - Electric Eclipse XL patio awning with 9' extension
  - Freedom III electric awning over entry door
  - Pull rod
- Girard® electric patio box awning and door awning with wind sensor (floorplan dependent)
- ● Power adjustable TV antenna with coaxial cable and 12-volt signal boost
- ● 120-volt receptacle, coaxial cable, and telephone jack (storage bay)
- ● Compressed-air supply hook-up in steering bay
- ● Chrome dual air horns
- ● Thermostatically-controlled/heated, remote control chrome side-view mirrors with turn signals and adjustable arms
- ● HWH® 4-point Computer Area Network (CAN) automatic air-leveling system
- ● Daytime running lights
- ● Fog lights
- ● Four curb lights



430  
470

- ● Large halogen headlights
- ● Marker lights
- ● Lighted, pass-through exterior storage bays with carpet lining and insulated doors
- ● Electric bay door locks
- ○ Single-directional, half-bay roll-out storage tray(s)
- ○ Dual-directional, full-bay roll-out storage tray(s)
- ○ Exterior entertainment center with 32" LCD high definition TV
- ● Full rear mud flap with stainless steel trim
- ● Polished stainless steel exhaust pipe tips for generator, Aqua-Hot® 525, and engine
- ● Undercoating
- ○ 3M® nose and entry door area protectant
- ○ Clear-coat exterior
- ● Choice of four exterior paint schemes: Antonella, Logan, Masai and Sophia
- ○ Exterior paint scheme with paint blend graphics (choice of four color themes)
- ● Chip-guard paint-protection coating on wheel well flare
- ● Bronze tone reflective dual-pane insulated windows
- ○ Ladder with universal assist extension
- ● Retractable engine light with remote reel
- ○ Sunscreen windshield cover

### Slide-Out Room Special Features

- X ● Bedroom (DS): HWH® single cylinder slide-out room-extension mechanism (floorplan dependent)
- X Bedroom (DS): Power Gear® slide-out room-extension mechanism
- ● Bedroom (PS): HWH lateral-arm slide-out room-extension mechanism (floorplan dependent)
- X ● Passenger-side: HWH X-slide-out room-extension mechanism (floorplan dependent)
- X Passenger-side: Power Gear slide-out room-extension mechanism
- ● Driver-side: Power Gear flush-floor room-extension mechanism (floorplan dependent)
- X ● Bedroom (PS): HWH single cylinder slide-out room-extension mechanism (45' only)
- X ● Bedroom (DS): HWH lateral-arm slide-out room-extension mechanism (45' only)
- X ● Driver-side: HWH X-slide-out room-extension mechanism (45' only)
- X ● Passenger-side: Power Gear flush-floor room-extension mechanism (45' only)
- ● Fiberglass vacuum-laminated exterior slide-out room wall
- ● Push-button slide-activation control panels
- ● Slide-out room cover awning
- ● Emergency hand-operated winch for HWH slide-out rooms

430  
470

### Slide-Out Room Dimensions

SLIDE-OUT	WIDTH	DEPTH	HEIGHT
<b>X ● 37' Sunset Bay</b>			
A. Living room	12'3"	2'8"	6'5"
B. Galley	12'8"	2'1"	5'8"
C. PS Bedroom	4'8"	1'7"	5'6"
D. DS Bedroom	5'1"	2'0"	5'2"
<b>● X 40' Hood River</b>			
A. Living room	12'3"	2'8"	6'5"
B. Galley	11'8"	1'8"	6'3"
C. PS Bedroom	4'8"	1'7"	5'6"
D. DS Bedroom	6'1"	2'0"	5'2"
<b>X ● 40' McKenzie Bridge</b>			
A. Living room	12'3"	2'8"	6'5"
B. Galley	12'8"	2'1"	5'8"
C. PS Bedroom	4'8"	1'7"	5'6"
D. DS Bedroom	9'0"	2'0"	5'2"
<b>X ● 42' Siskiyou Summit</b>			
A. Living room	12'3"	2'8"	6'5"
B. Galley	12'8"	2'1"	5'8"
C. PS Bedroom	6'6"	1'7"	5'6"
D. DS Bedroom	10'11"	2'0"	5'2"
<b>X ● 45' Crane Prairie</b>			
A. Galley	13'8"	2'1"	5'8"
B. Living room	15'3"	2'1"	6'5"
C. PS Bedroom	7'0"	2'0"	5'2"
D. DS Bedroom	6'6"	1'7"	5'6"

### Options Summary

- ○ **Powertrain:** Cummins® ISL engine paired with Allison 3000 MH transmission, producing 425 HP at 2200 RPM with 1200 ft-lbs torque at 1300 RPM and (Meets 2007 EPA emissions requirements)
- Engine features -*
  - 8.9 liters (543 cubic inches)
  - 2-stage engine brake with brake light activation
  - Electronic Control Module (ECM)
  - Alternator: 160 amps
  - Alternator: 200 amps (with electric refrigerator option)
  - Hydronic engine block preheat
  - Sight glass for coolant tank
  - 5-year/100,000-miles engine warranty
- Transmission features -*
  - Allison 3000 MH transmission with PTO
  - Six speed automatic with two overdrive gears
  - Keypad electronic shifter with digital display
  - 5-year/unlimited-mile transmission warranty (with TranSynd™ fluid)
- ○ Powered driver's toll window
- ○ SmarTire II tire monitoring system
- ○ Tiled entry stepwell
- X ○ Massage/heated driver and passenger seats with adjustable headrests
- X Massage/heated driver and passenger seats with adjustable headrests, driver sliding seat cushion and passenger seat power footrest

430  
470

- ○ Villa 6-way massage/heated driver and passenger seats with adjustable headrests, driver sliding seat cushion and passenger seat power footrest (required for Canada)
- X SilverLeaf® VMS 240 CL travel information center with auto generator, auto temperature, and double-DIN stereo rear-view monitor
- X ○ SilverLeaf VMS 240 CL digital engine monitor/travel information center with auto generator start and auto temperature
- ○ Garmin® GPS navigation system with XM Smart Antenna and Bluetooth® interface (Allure 430 requires dash stereo option) (XM weather, XM traffic, and XM radio available with subscription)
- ● Double-DIN color rear-view monitor with AM/FM/satellite radio stereo and compact disc controls with remote 10-disc CD changer, MP3 player input, and two speakers
- ○ Side-view cameras with dash display (Allure 430 requires double-din stereo option)
- ○ 37" LCD high definition TV in overhead dash with five ceiling speakers and subwoofer (floorplan dependent)
- ○ 32" LCD high definition TV in bedroom
- ○ Stationary satellite system or In-motion satellite system
- ○ In-motion satellite system and high definition receiver in living room (includes additional receiver in bedroom)
- ○ Digital video recording system
- ○ Universal RF remote (pre-programmed)
- ○ Additional universal remote
- ○ **Choice of cabinetry:**
  - Light cherry
  - Medium cherry
  - Hickory
  - Maple
  - Walnut
- ○ Sculpted carpet
- ○ Custom interior décor kit (preset)
- ○ Full tile living room floor
- ○ Tile pattern upgrade
- ○ Radiant floor heating (available with full tile living room floor option)
- ○ Radiant floor heating in galley and bath
- ○ Washer/dryer combo
- ○ Stacked washer and dryer
- ○ Choice(s) of the following options:
  - J sofabed
  - Office suite desk and Euro recliner with ottoman
  - Hide-away sofabed on passenger side
- ○ Computer table with charging center (replaces occasional table)
- ● Air mattress in hide-away sofabed
- ○ Upgrade fabric upholstered sofa to Ultraleather®
- ● Sleeper café dinette
- ○ U dinette booth
- X ○ L dinette booth (45' only)
- ● Two additional folding chairs
- ○ Elliptical ceiling light fixtures with etching (non-dimming)
- X ○ Storage cabinet with stained glass door (replaces glassware cabinet)

430  
470

- ○ Norcold 12 cu ft, 2-way refrigerator with ice maker, water dispenser, and wood panel doors (floorplan dependent)
- X ○ Jenn-Air® 22 cu ft two door side-by-side electric refrigerator/freezer with wood panel doors, AGM batteries, 200 amp alternator, and 3000-watt solid state Xantrex® RS3000 true sine wave inverter/converter (floorplan dependent)
- ○ Advantium® Speedcook microwave/convection oven with power hood
- ○ SHARP® microwave (required for Canada)
- ○ Stainless steel appliance package (refrigerator door and Advantium® oven)
- ○ Drop-in 3-burner LP gas cooktop with 17" LP gas oven
- ○ Double-bowl solid-surface sink or Single-bowl solid surface sink with solid-surface covers and single-lever faucet with pull-out sprayer
- ○ Solid-surface vanity sink(s)
- X ○ Tub/shower combination (floorplan dependent)
- X ○ King bed 72"x77" (floorplan dependent)
- ○ Air chamber mattress
- ○ Safe with combination lock
- ○ Max storage

430  
470

- X ○ 3000-watt solid state, Xantrex RS3000 true sine wave inverter/converter with power factor corrected 150 amp charger (with electric refrigerator option)
- ○ Two AGM 8D domestic deep cycle batteries
- X ○ Onan 10 kW "quiet" liquid-cooled diesel generator with remote start/stop, on electric roll-out, with third roof A/C option
- X ○ Four AGM 8D domestic deep cycle batteries (with electric refrigerator option) (45' only)
- X ○ Third roof air conditioner with heat pumps (with upgrade to Onan® 10 kW generator) (floorplan dependent)
- ○ RV Sani-Con® tank drain system
- ○ Girard® electric patio box awning and door awning with wind sensor (floorplan dependent)
- ○ Single-directional, half-bay roll-out storage tray(s)
- ○ Dual-directional, full-bay roll-out storage tray(s)
- ○ Exterior entertainment center with 32" LCD high definition TV
- ○ Ladder with universal assist extension
- ○ 3M® nose and entry door area protectant
- ○ Exterior paint scheme with paint blend graphics (choice of four color themes)

430  
470

- ○ Sunscreen windshield cover
- ○ Factory delivery
- ○ Ultimate factory delivery



Kallista interior and light cherry cabinetry





TREVI INTERIOR AND MEDIUM CHERRY CABINETS

The 2008 Allure 470

## 45' Crane Prairie

*Reprinted from the Winter 2008 issue  
of Country Coach Destinations Magazine*

### Picture this:

You're at home. The phone rings, and some friends are arriving in town and would love to stop by and visit. The weather's good, so a barbecue on the patio sounds just right.

Later that evening, after a lovely meal prepared in your well-appointed kitchen, you suggest a theater night with some buttery popcorn and the latest action movie. Half way through the film, your spouse is getting sleepy, and decides to call it a night. The rest of the group stays on through the exciting finish, and heads off after a great time.

There you have it. . . just one of many fantastic times to be enjoyed in the new Crane Prairie floorplan from Country Coach, only available in the 2008 Allure 470. This is a motorcoach designed directly from customer feedback, and customer experience. This is one of those crazy times when you throw all your assumptions of what a motorcoach is supposed to be like right out the window, and instead consider a whole new way to support your lifestyle. This is the new Crane Prairie, 45 feet of luxury, power, and just plain fun.



# THE 2009 ALLURE 470 45' CRANE PRAIRIE



1 LARGE WARDROBE AND WASHER/DRYER



2 MID-COACH BATHROOM



3 REAR FULL BATHROOM-SUITE WITH LARGER SHOWER



4 GALLEY WITH MEDIUM CHERRY CABINETRY



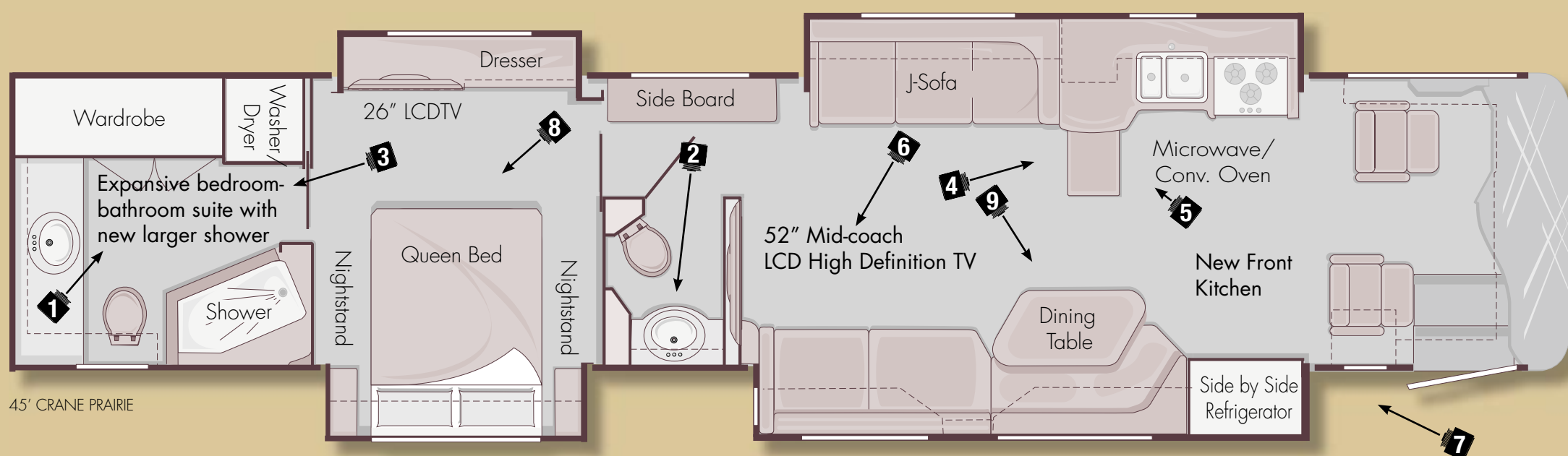
5 COUNTER EXTENSION PULL-OUT



6 52" HIGH DEFINITION MID-COACH TV

There are two popular floorplan configurations: The floorplan shown shows the J sofa, L dinette and passenger side sofa. The photographs show the desk, dining table and sofa bed.

The new Crane Prairie features a full rear bath with new larger shower, plus a half-bath fore of the bedroom. Enjoy a luxurious private bed/bath suite, and offer your guests a convenient bathroom just off the living area.



45' CRANE PRAIRIE

This innovative floorplan offers a galley placed just behind the driver's seats. This location is convenient for easy access, with a quick few steps from either the front seats or the external patio area. In turn, the living area is nestled in mid-coach, creating an intimate yet open area to enjoy company, or relax and soak up the entertainment from the standard 52" LCD high definition television.

## Photographs

Follow this camera symbol to see the camera positions of the photographs above.

As you may recall, our scenario began with a few friends, and dinner. With the sunny weather, the patio is the spot. No problem. The Crane Prairie's galley is in the fore of the coach, just rear of the driver and passenger seats. Getting from the refrigerator to the picnic table is a few easy steps, with no tracking through the living areas of your home. Country Coach placed

the fridge on the patio side of the coach, to ensure that your view at the top of the entry steps is attractive woodwork and solid surface, not a big appliance. Great convenience and luxurious design, all in one.

These dinner parties are also a great time to make use of the Crane Prairie's convenient bath and 1/2 arrangement. With

the full rear bath suite nestled in the rear private area, the front half bath becomes the ideal guest bath. Choose the popular full tile option, and the front half of your motorcoach becomes a easy dining/entertaining/living space, reserving the rear bed/bath area for your own personal space.

So, dinner was a success. Everyone's well fed and watered, and it's time for the

show. Step inside, and get comfy in your open yet intimate mid-coach living area. For ultimate seating, choose opposing sofas with an "L" dinette, set the DVD on play, and immerse yourself in the media experience delivered by the standard 52" LCD high definition television. Paired with the standard Yamaha 5.1 surround sound system, it is a true home theater design.

**Here's where the private bedroom suite comes in to play.** Despite the enthralling movie, your spouse decides its time for lights out, and retires to the bedroom. Thanks to the floorplan's unique design, once the bedroom door is closed there's plenty of room for spreading out and getting comfortable. Step into the expansive rear bath, featuring

Country Coach's largest-ever shower, and discover what residential luxury is all about. Grab your clothes from the convenient hanging storage, or do a quick load of laundry with the stack washer/dryer. Then slide into the available king size bed, and either shut out the lights with the easy-access multiplex switching, or flip on the available 32" LCD HDTV and see what Jay Leno is up to.



# THE 2009 ALLURE 470 45' CRANE PRAIRIE

2009 ALLURE 400 SERIES

INTERIOR CHOICES

2009 ALLURE 400 SERIES



HUGE STORAGE CAPACITY



BEDROOM SHOWING REAR FULL BATH



PASSENGER SIDE SLIDE WITH DINING AREA AND FORWARD REFRIGERATOR

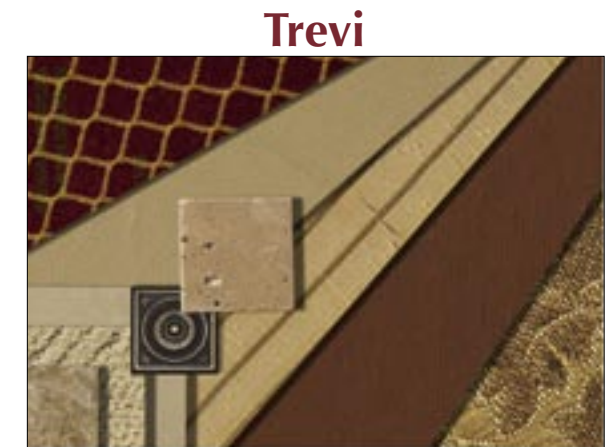
## 2009 Allure 470 45' Crane Prairie

### Some Standard Features

- Cummins® ISM engine paired with Allison 4000 MH transmission, producing 500 HP and 1550 ft-lbs torque
- 5-year/100,000-mile engine warranty
- Wheelbase: 45' – 296"
- GVWR – 47,600 lbs
- GCWR – 62,600 lbs
- DynoMax® chassis: semi-monocoque construction of 8" x 3" x 1/4" steel-tube with welded components
- 15,000 lb receiver hitch with electrical connector and chrome cover
- 2-year/unlimited mile chassis warranty
- Driveline (45'): Dana Spicer® SPL 250 series
- Drive axle (45'): Dana® with 4.30 differential ratio
- 52" LCD high definition mid-coach TV
- 45' quad slide floorplan
- Full rear bath and mid-coach half bath
- Front kitchen



Ella



Trevi



Kallista



Tribeca

### WOOD CHOICES

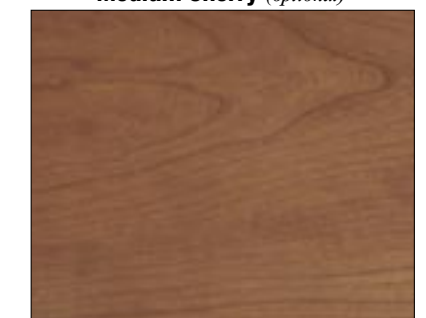
Oak (standard)



Light Cherry (optional)



Medium Cherry (optional)



Hickory (optional)



Walnut (optional)



Maple (optional)

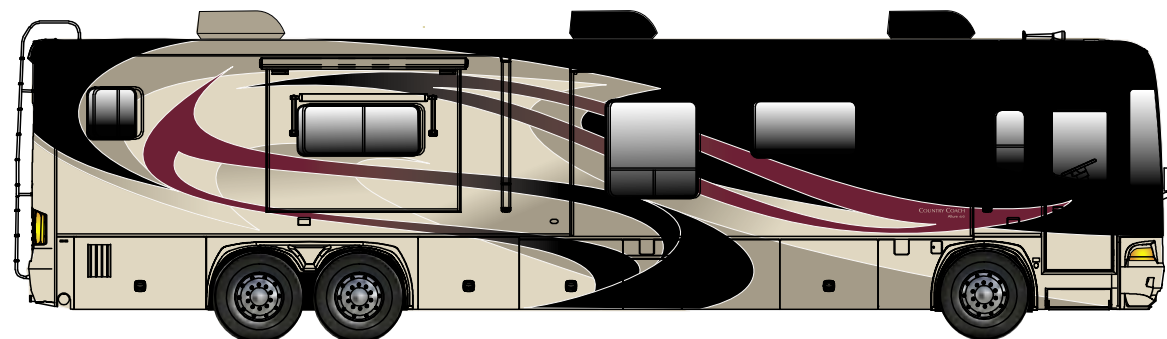


While we try to represent the textiles accurately, color and hue shown here may vary from the original samples. Please see your dealer representative to view actual fabric samples.

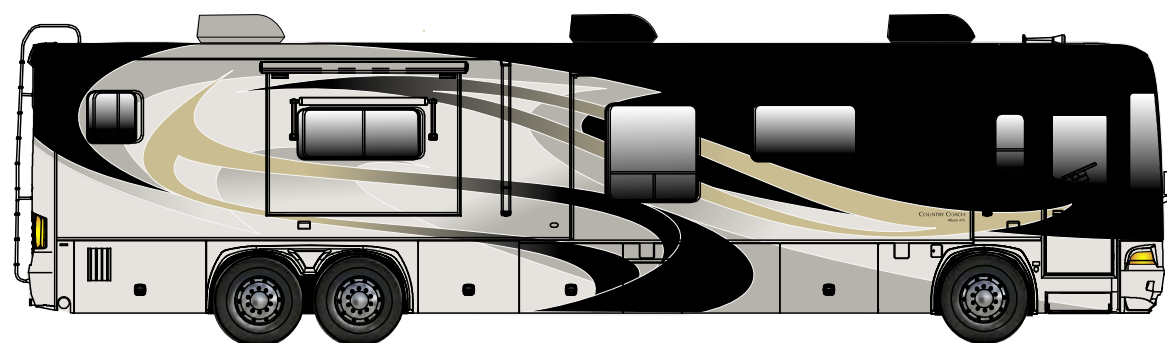


## EXTERIOR PAINT CHOICES

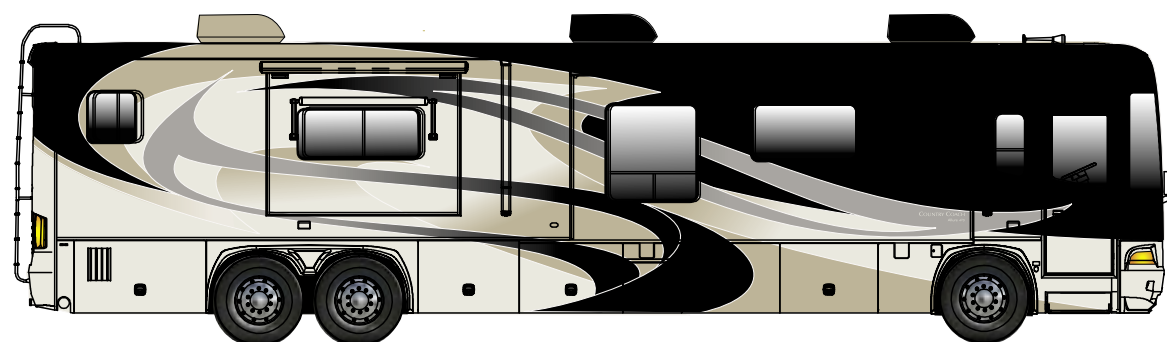
### Antonella



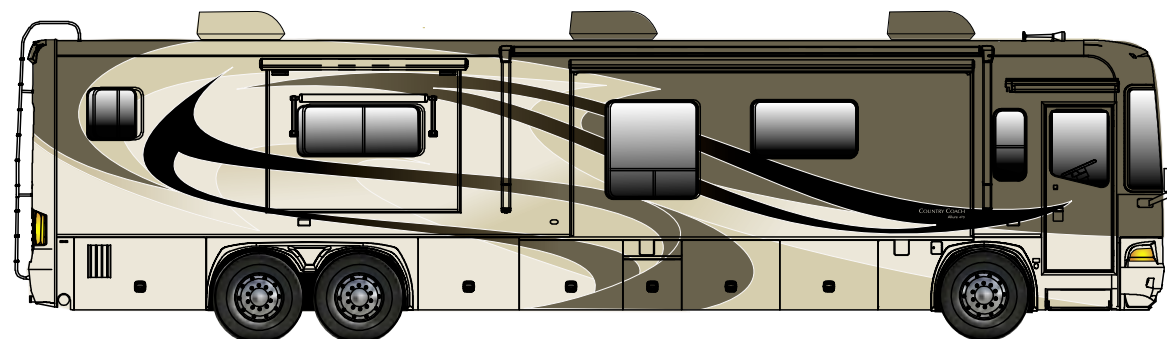
### Logan



### Masai



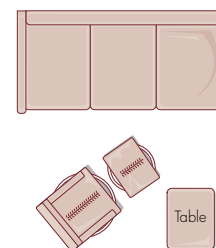
### Sophia



While we try to represent the textiles and exteriors accurately, color and hue shown here may vary from the original samples. Please see your dealer representative to view actual samples.

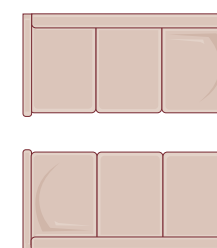
## SEATING ARRANGEMENTS

### SEATING 1



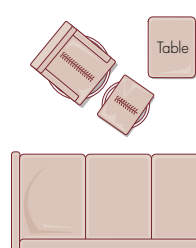
(DS) Sofabed  
(PS) Euro recliner  
with ottoman and  
occasional table

### SEATING 2



(DS) Sofabed  
(PS) Sofabed  
*Cannot choose two  
J sofas or two  
hide-away sofas*

### SEATING 3



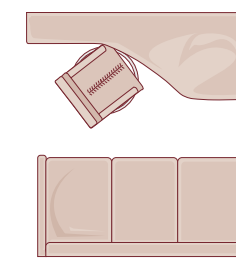
(DS) Euro recliner  
with ottoman and  
occasional table  
(PS) Sofabed

### SEATING 4



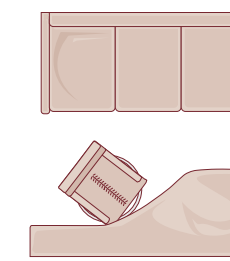
(DS) Euro recliner  
with ottoman and  
occasional table  
(PS) Euro recliner  
with ottoman and  
occasional table

### SEATING 5



(DS) Office Suite desk  
and Euro recliner  
with ottoman  
(PS) Sofabed

### SEATING 6

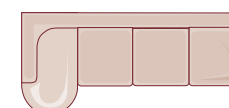


(DS) Sofabed  
(PS) Office Suite desk  
and Euro recliner  
with ottoman

DS = Driver-Side, PS = Passenger-Side

## SELECT YOUR FAVORITE SLEEPER SOFABED

### J Sofabed



For the Allure 400 Series, Sofabeds are often available in standard and J configurations. In each configuration, two styles of sofabed may be available.

### Sofabed



## STYLES

### Fold-out Sofabed

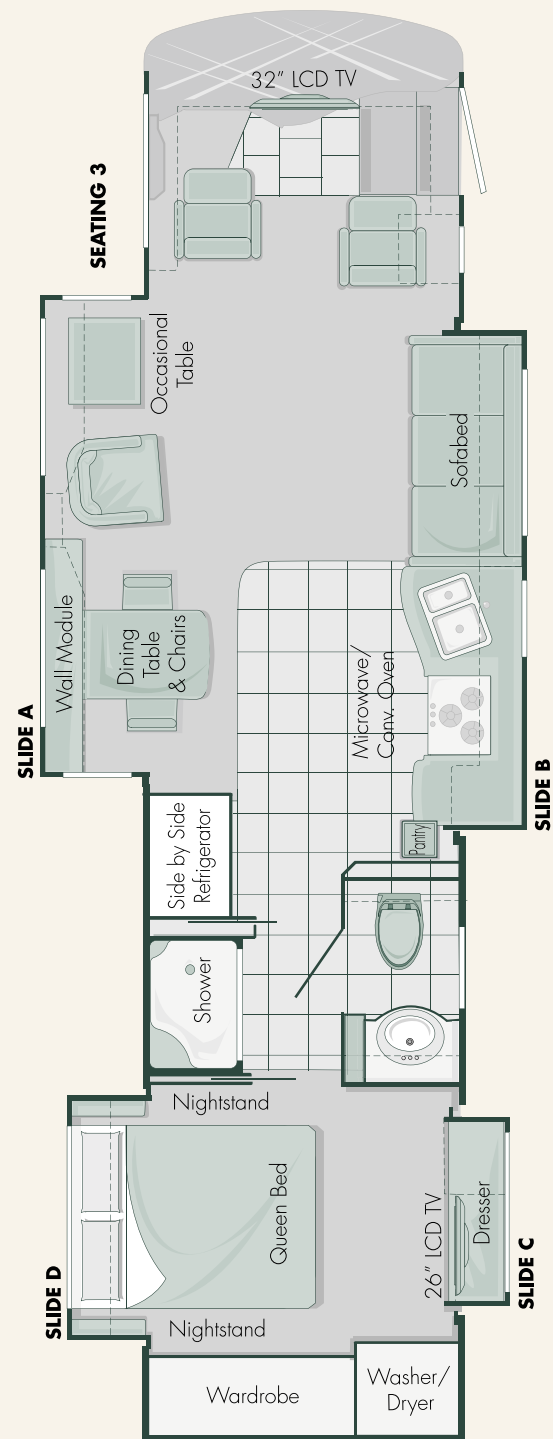
Style features a residential sofabed design. For conversion to bed, lift the sofabed seat up and out to a horizontal position. Provides a sleeping surface faced with sofa fabric.

### Hide-away Sofabed

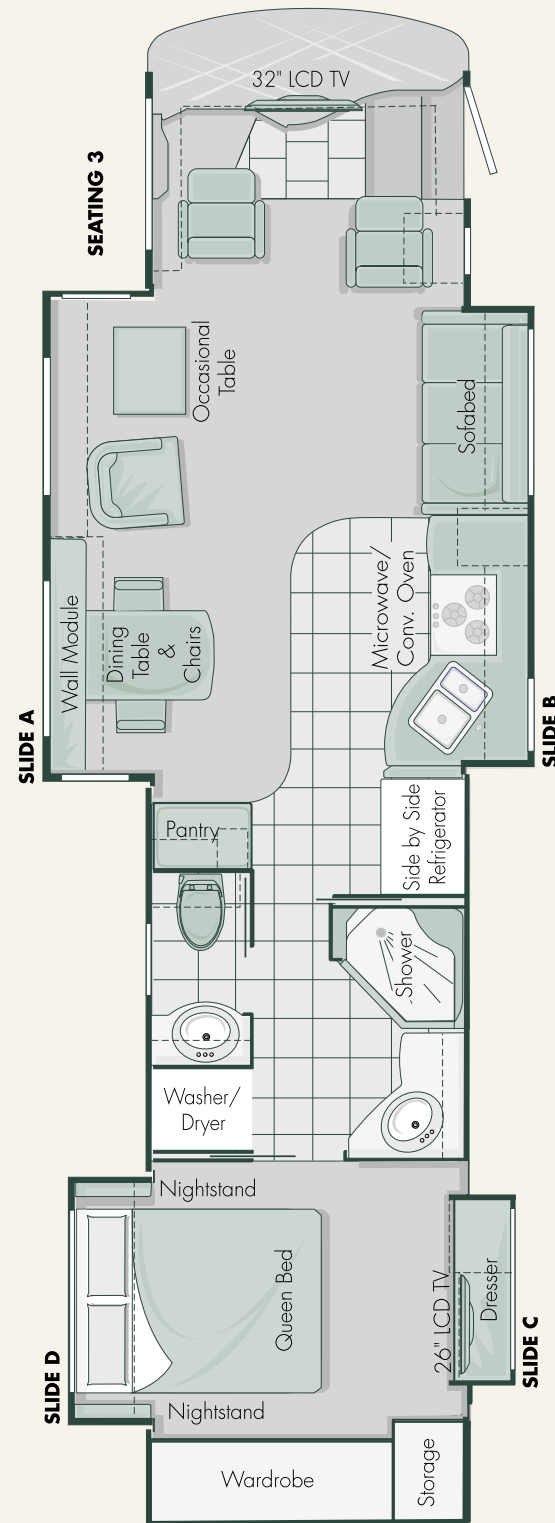
Style features a residential sofabed design. For conversion to bed, remove the seat cushions and pull out the hide-away bed frame to unfold and extend the mattress. Provides a conventional or air mattress sleeping surface.



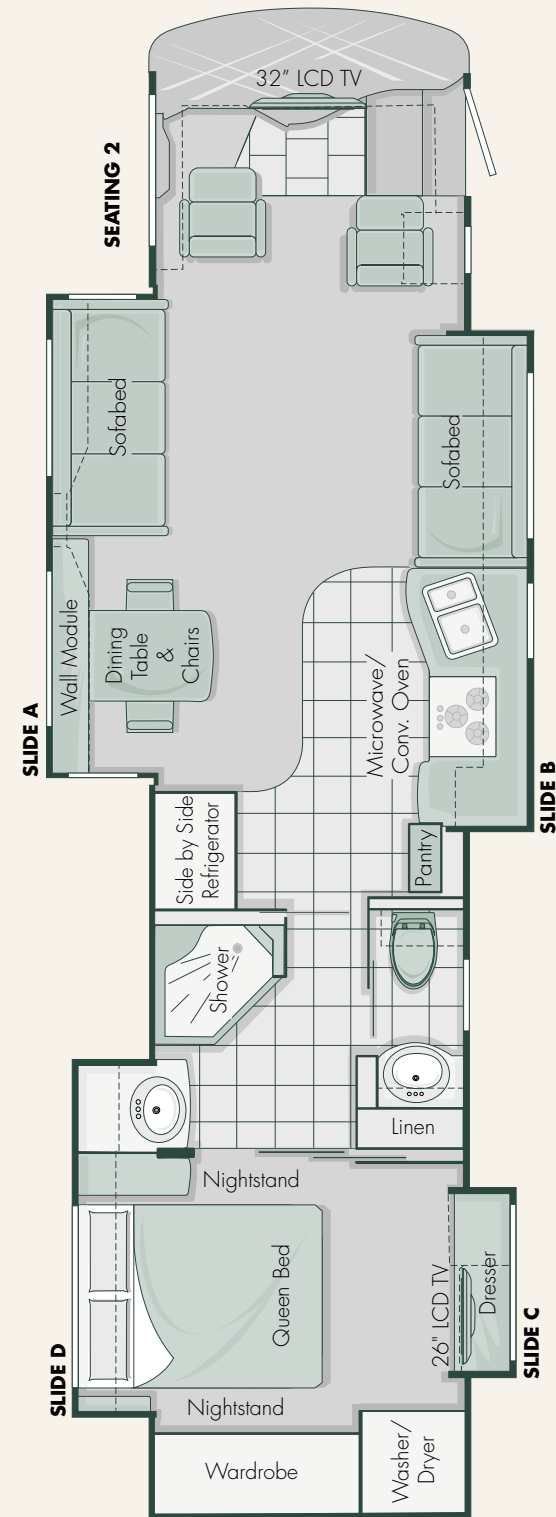
### 37' Sunset Bay



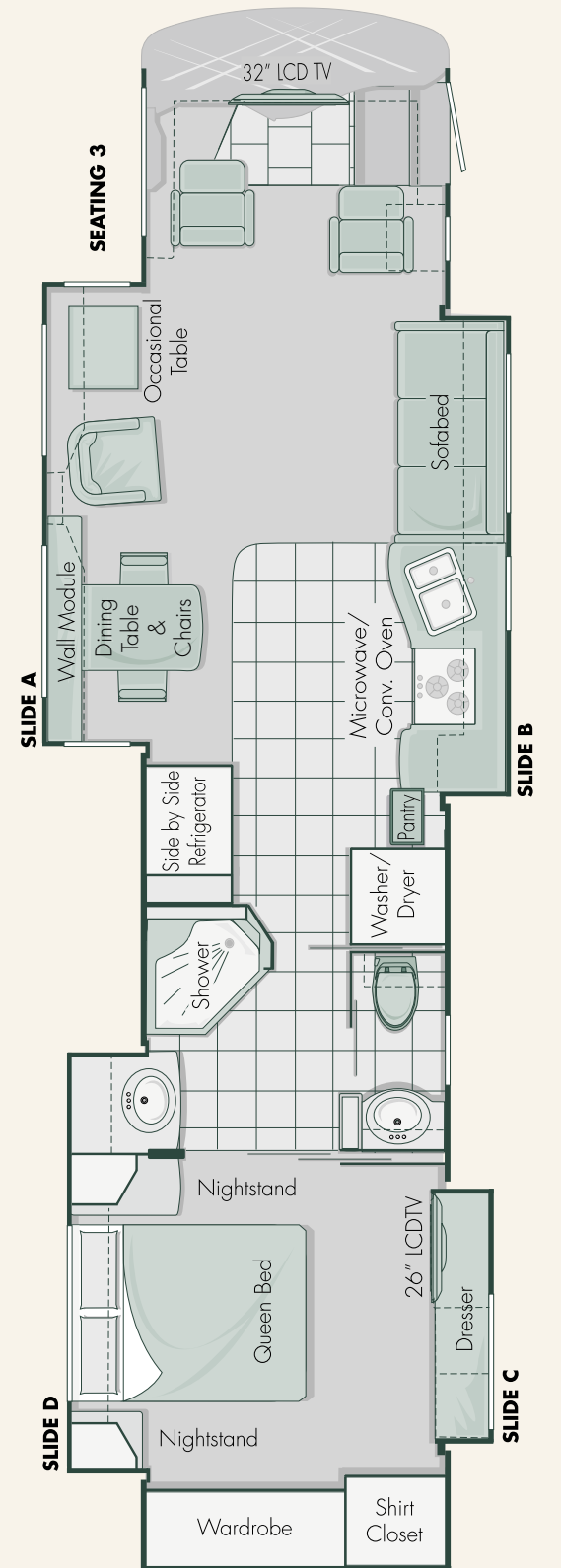
### 40' Hood River



### 40' McKenzie Bridge

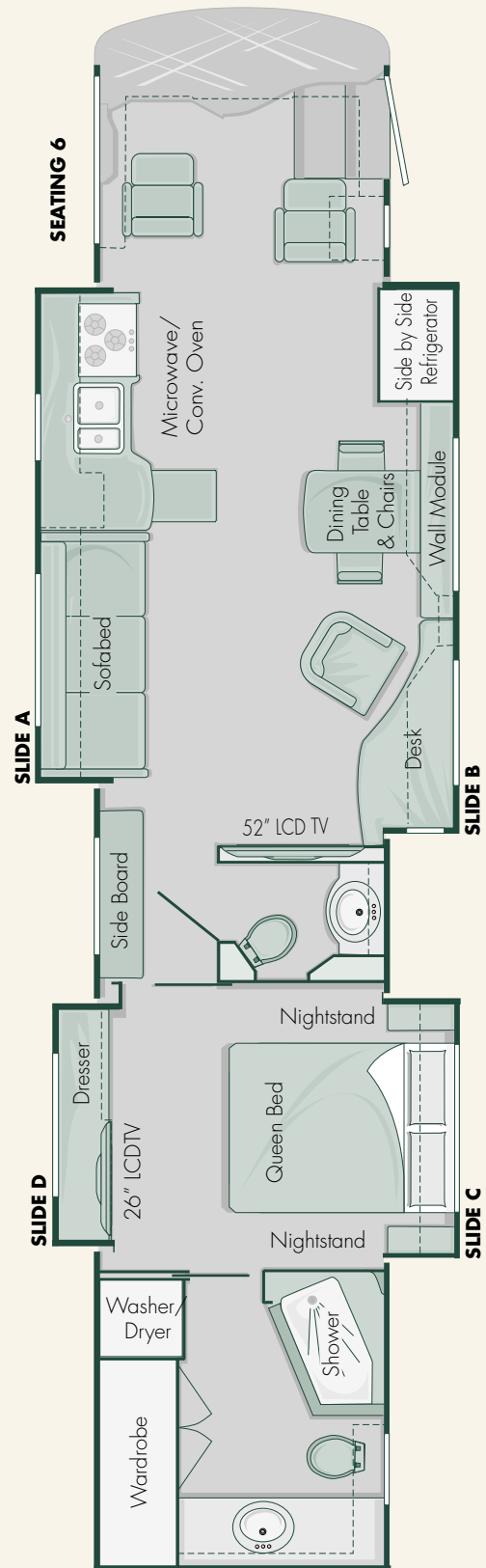


### 42' Siskiyou Summit

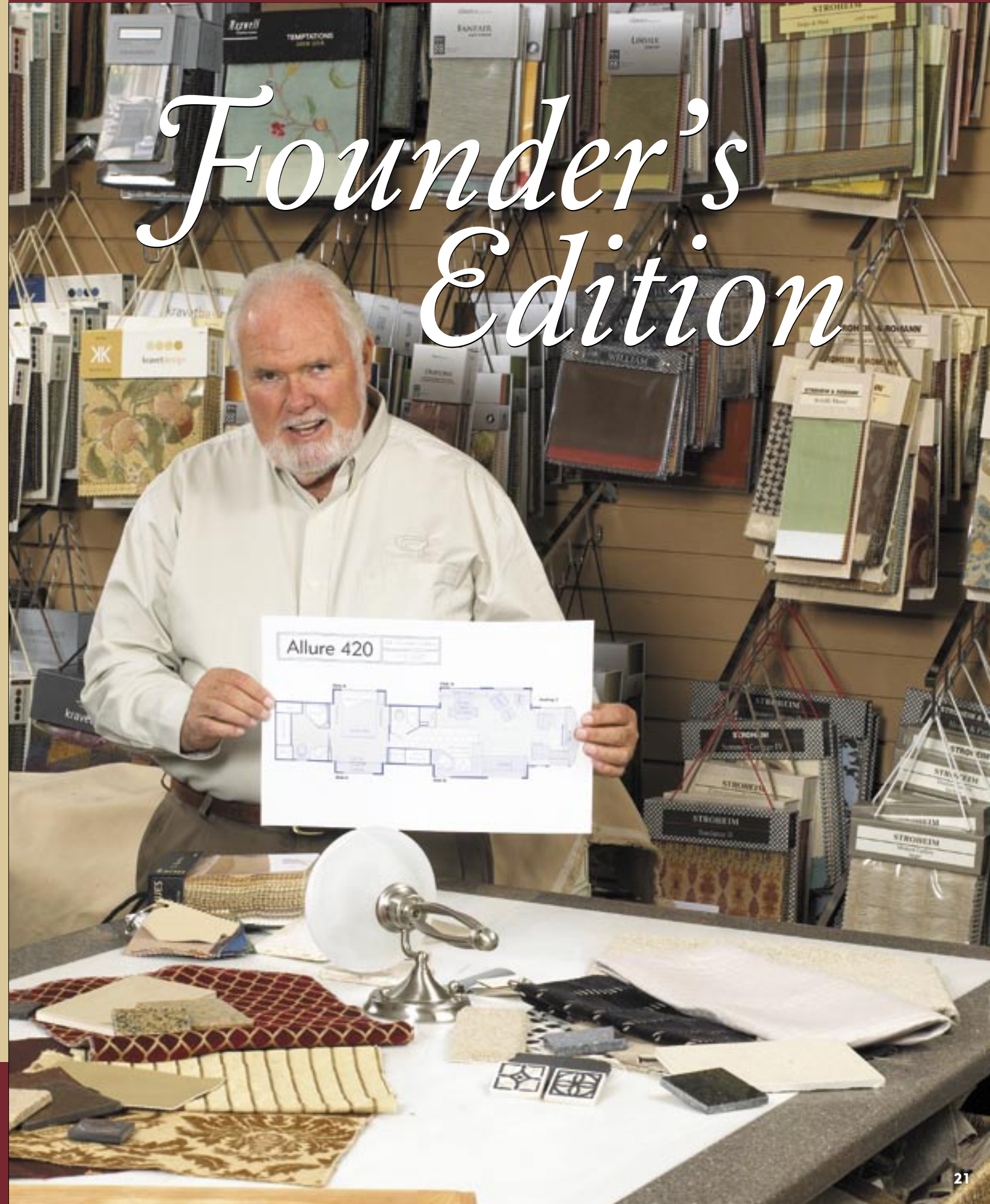




### 45' Crane Prairie



# Founder's Edition





2009 ALLURE 420

43' *Founder's Edition*

Bob Lee had an idea....

For 35 years, Bob Lee, company founder, has taught the employees of Country Coach that luxury travel is about function as much as it is about comfort. With that in mind, upon Bob's return to Country Coach this past February, he immediately set upon a mission to build the ultimate combination of luxury and practical living.

With the innovation resources and extensive parts and fabrication catalog of Country Coach at his disposal, Bob Lee went to work on his idea of a well-balanced motorcoach.

Country Coach is proud to introduce the 2009 Allure 420 Founder's Edition. A spectacular combination of available options from multiple Country Coach motorcoach floorplans (a mid-coach LCD HD TV, residential refrigerator, and third roof A/C, just to name a few options), this remarkable new motorcoach also comes with a full rear bath and mid-coach half bath. The 2009 Allure 420 Founder's Edition is the embodiment of The World's Finest, offering a balanced, luxurious livability in one accessible motorcoach.

View Bob Lee's new Founder's Edition motorcoach today, and see what happens when the man who started it all gets his way.



43' Founder's Edition

2009 Allure 420 43'

Remarkable Founder's Edition Features:

STANDARDS

- Full rear bath and mid-coach half bath
- Kenwood® AM/FM radio and CD player with two living room speakers
- New data-bus light bar
- Mini home theater system with DVD player, and 2.1 surround sound with two ceiling speakers and subwoofer in bedroom
- Galley extension pull-out
- 32" LCD high definition TV in overhead dash with five ceiling speakers and subwoofer
- **Powertrain:** Caterpillar® C9 engine paired with Caterpillar CX28 transmission, producing 425 HP at 2300 RPM with 1350 ft-lbs torque at 1400 RPM (meets 2007 EPA emissions requirements)

OPTIONS

- **Powertrain:** Cummins® ISL engine paired with Allison 3000 MH transmission, producing 425 HP at 2200 RPM and 1200 ft-lbs torque at 1300 RPM (meets 2007 EPA emissions requirements)
- Automatic low-voltage generator start
- Garmin® GPS navigation system with XM Smart Antenna and color LCD touch-screen interface with dash stereo (XM weather, XM traffic, and XM radio available with subscription)
- Choice of stationary or in-motion satellite systems
- Side-view cameras on rear-view monitor display
- Jenn-Air® 22 cu ft two door side-by-side electric refrigerator/freezer with AGM batteries, 200 amp alternator, and 2800-watt inverter/converter
- Third roof air conditioner with heat pumps (comes with upgrade to Power Tech or Onan® 10 kW generator)
- 32" LCD high definition mid-coach TV
- Max storage (floorplan dependent) in bedroom
- 3M® nose and entry door area protectant
- King bed 72" x 77"

Chassis Specifications

- **DynoMax® chassis:** semi-monocoque construction with 10" x 3" x 1/4" steel-tube with welded components
  - 10,000 lb receiver hitch with electrical connector and chrome cover
  - 2-year/unlimited-mile chassis warranty
- **43' chassis:** GVWR - 45,200 lbs, GCWR - 55,200 lbs
- **Wheelbase:** 279"
- **Powertrain:** Caterpillar® C9 engine paired with Caterpillar CX28 transmission, producing 425 HP at 2300 RPM and 1350 ft-lbs torque at 1400 RPM (meets 2007 EPA emissions requirements)
 

*Engine features:*

  - 9.3 liters (567 cubic inches)
  - Caterpillar multi-stage engine brake with brake light activation

*Transmission features:*

  - Electronic Control Module (ECM)
  - Alternator: 160 amps
  - Alternator: 200 amps (with electric refrigerator option)
  - 120-volt, 1,000 watt engine block heater (when hydronic heat is not optioned)
  - Sight glass for coolant tank
  - 5-year/200,000-mile engine warranty

- **Powertrain:** Cummins® ISL engine paired with Allison 3000 MH transmission, producing 425 HP at 2200 RPM and 1200 ft-lbs torque at 1300 RPM (meets 2007 EPA emissions requirements)
 

*Engine features:*

  - 8.9 liters (543 cubic inches)
  - 2-stage engine brake with brake light activation

*Transmission features:*

  - Electronic Control Module (ECM)
  - Alternator: 160 amps
  - Alternator: 200 amps (with electric refrigerator option)
  - 120-volt, 1,000 watt engine block heater (when hydronic heat is not optioned)
  - Sight glass for coolant tank
  - 5-year/100,000-mile engine warranty

*Transmission features:*

  - Allison 3000 MH transmission with PTO
  - Six speed automatic with two overdrive gears
  - Keypad electronic shifter with digital display
  - 5-year/unlimited-mile transmission warranty (with TranSynd™ fluid)
- **Driveline:** Dana Spicer® SPL 170 series
- **Drive axle:** ArvinMeritor® with 4.88 differential ratio
- **Suspension:**
  - *Front* – Holland® independent front suspension with double-wishbone construction and full air-suspension system, anti-sway bar, and Koni® shock absorbers
  - *Rear* – Ridewell drive/tag combination air-suspension system with four air springs and Koni shock absorbers
- **Service brakes:** Full air brakes with ABS, Automatic Traction Control (ATC), and automatic slack adjusters
  - 16.5" x 5" front axle
  - 16.5" x 7" drive and tag axles
- **Steering:** Fully-integral, full-time hydraulic power-steering gear with tilt and telescoping steering column
- Electronic cruise control
- Williams Controls adjustable position throttle and brake pedals
- **Tires:** Steel-belted radials 295/80R x 22.5"



- **Wheels:**
  - *Front* – two 8.25" x 22.5" aluminum-alloy wheels
  - *Rear* – two 8.25" x 22.5" aluminum-alloy wheels and two 8.25" x 22.5" inner dual steel wheels
  - *Tag* – two 8.25" x 22.5" aluminum-alloy wheels
- **Battery:** Two group 31 engine cranking batteries with 12-volt disconnect
- **Fuel capacity:** 100 gallons (dual fuel fills, driver and passenger sides)
- **Service center:** diagnostic reader ports, circuit breakers, and chassis battery disconnect

### Construction Highlights

- **Exterior width:** 102"
- Steel-tube cage structure
- Vacuum-bonded walls and floor with 1-1/2" expanded polystyrene insulation
- Fiberglass exterior with aluminum skirts and insulated compartment doors
- One-piece laminated fiberglass roof with steel-tube framing and dual-ducted roof air conditioners
- **Exterior riding height:** 12' 9" (including roof air; height varies with satellite option)
- **Finished interior height:** 85"
- Sound and vibration dampening material throughout

### Driver Compartment Amenities

- 6-way power-adjustable driver and passenger seats with 3-point restraint and adjustable arms
- Driver sliding seat cushion and passenger seat power footrest
- Villa 6-way power-adjustable driver and passenger seats with 3-point restraint and adjustable arms, driver sliding seat cushion and passenger seat power footrest (required for Canada)
- Passenger seat magazine rack
- Custom contoured dash and overhead Burlwood dash panel
- **Medallion gauges include:** speedometer (with digital display for speedometer, odometer, trip odometer, and transmission temperature), tachometer, air pressure, oil pressure, volt meter, water temperature, and fuel level

- Garmin® GPS navigation system with XM Smart Antenna and color LCD touch-screen interface (XM weather, XM traffic, and XM radio available with subscription)
- Color rear-view monitor
- Side-view cameras on rear-view monitor display
- Side-view mirror power controls
- Cup holders
- Swing-out valet tray
- Single-piece wrap-around windshield with shade band
- Heating/cooling/defrost unit in dash
- Two 12-volt dash overhead mounted 2-speed fans
- Electronic power sun visors
- Manual driver-side window sun shade
- Privacy drape
- Dual map lights
- Passenger-side control panels with step slide cover, porch light, ceiling lights, entry step, power visor control, and domestic battery disconnect switches with battery switch indicator lamp
- 18" SmartWheel® leather-wrapped steering wheel with controls for horn, head light flash, marker light flash, cruise functions, and wipers
- SmarTire® II tire monitoring system
- Bound floor carpets for entry steps
- Tile entry landing
- Tile flooring around driver's area
- Entry door interior assist grip

### Front Entertainment

- 32" LCD high definition TV in overhead dash with five ceiling speakers and subwoofer
- 37" LCD high definition TV in overhead dash with five ceiling speakers and subwoofer
- 32" LCD high definition mid-coach TV
- Home theater system with 5.1 surround sound and 5-disc DVD player
- Kenwood® AM/FM radio and CD player, with two living room speakers
- 10-disc CD changer
- Pre-wired for satellite dish
- Stationary satellite system
- In-motion satellite system
- In-motion satellite system and high definition receiver
- Boosted cable antenna switch box

### General Conveniences

- **Choice of four interior design themes:** Ella, Kallista, Trevi, Tribeca
- Custom crafted, stained and lacquered oak cabinetry and woodwork with raised panel doors
- **Choice of cabinetry:**
  - Light cherry
  - Medium cherry
  - Maple
- Decorative knobs and pulls
- Padded vinyl ceiling
- Custom interior décor kit (preset)
- Halogen lighting throughout
- Intellitec remote switching system
- Elliptical ceiling light fixtures with etching
- Decorative lighting in bedroom and living room
- Tension mount day/night window shades in living/dining area/bedroom
- Mini-blinds in galley and bathroom
- Radiant floor heating in galley and bath
- Tile pattern upgrade
- Pre-plumbed for optional washer/dryer
- Washer/dryer combo
- Stacked washer and dryer
- Intellitec EMS system monitor panel
- Telephone jacks (two in living area, one in bedroom and one in storage bay)
- Stepwell light
- Power step slide cover
- Smoke detector
- Carbon monoxide detector
- Fire extinguisher
- LP gas detector
- Coach Information Kit: Owner's Guide, OEM manuals, chassis parts list
- Emergency Roadside Service (first year paid by Country Coach)
- Factory delivery

### Living Room Amenities

- **Choice(s) of the following:**
  - Fold out sofaed
  - Hide-away sofaed
  - Euro recliner with ottoman and occasional table
- **Choice(s) of the following:**
  - J sofaed
  - Hide-away sofaed on passenger-side
- Computer table with charging center (replaces occasional table)
- Air spring mattress (only available with hide-away sofaed)
- Upgrade fabric upholstered sofa to Ultraleather®

- Decorative window treatments in living room
- Carpet
- Sculpted carpet
- Full tile floor
- Radiant floor heating (available with full tile floor option)

### Galley Amenities

- Polished solid-surface countertops with edge detail
- Solid-surface splashguard located at forward end of countertop
- Full tile backsplash
- Double-bowl stainless steel sink with solid-surface covers and single-lever faucet with pull-out sprayer
- Fan-Tastic Vent® fan with rain sensor, automatic vent, remote switch and double dome
- Norcold® 12 cu ft 2-way refrigerator with ice maker and wood panel doors
- Norcold 12 cu ft 2-way refrigerator with ice maker and stainless steel doors
- Norcold 12 cu ft 2-way refrigerator with ice maker, water dispenser, and stainless steel doors
- Jenn-Air® 22 cu ft two door side-by-side electric refrigerator/freezer with AGM batteries, 200 amp alternator, and 2800-watt inverter/converter
- Microwave/convection oven with power hood
- Advantium® Speedcook stainless steel microwave/convection oven with power hood
- SHARP® microwave (required for Canada)
- Recessed 3-burner electronic-ignition gas cooktop with solid-surface cover and sealed burners
- Storage for sink and stove covers
- Galley extension pull-out
- Drop-in 3-burner gas cooktop with 21" oven
- Wood window box with mini blinds on galley window
- **Dining area seating variations:**
  - Wall cabinet and wall-mounted dining table with fore and aft slide mechanism
  - Two chairs
- Sleeper café dinette with wood table
- Two additional folding chairs
- Tile flooring on main floor and carpet in slide-out rooms
- Accuride® self closing drawer guides
- Pantry

### Bath Amenities

- Full rear bath and mid-coach half bath
- Polished solid-surface countertop with edge detail
- Full tile backsplash
- Porcelain vanity sink with coordinating fixtures
- Decorative vanity light bar
- Vanity overhead with mirrored doors
- Towel ring at each vanity sink, towel bar and toilet tissue holder
- Etched glass shower enclosure
- Insulated skylight above shower
- Light in shower
- Tub/shower combination
- Tecma china toilet
- Water pump switch
- Fan-Tastic Vent® fan with rain sensor, automatic vent, remote switch and double dome
- Hand-held pressure-balanced shower unit
- Hardwood pocket doors
- Tile flooring
- Mini-blinds with fabric valance on bath window

### Bedroom Amenities

- Queen bed 60"x77"
- King bed 72"x77"
- Air chamber mattress queen bed
- Clothes dresser with drawers
- Upholstered headboard
- Bedspread with three décor pillows
- Two nightstands with solid-surface countertops
- Sliding mirror wardrobe with lighting
- Decorative window treatments
- Tension-mount day/night shade window coverings
- Wall sconce lighting
- 26" LCD high definition TV
- Mini home theater system with DVD player, and 2.1 surround sound with two ceiling speakers and subwoofer
- Telephone jack
- Carpet
- Max storage

### Heating and Cooling Systems

- **Temperature control center controls the following:**
  - 35,000 BTU and 20,000 BTU LPG furnaces
  - Two 15,000 BTU low-profile roof air conditioners with heat pumps, remote condensation pump, and drain lines

- Aqua-Hot® 525 diesel-fired hydronic central heating system (50,000 BTU) with zone control and engine preheat
- Driver area over-the-road heating/cooling/defrost system with driver controls (45,000 BTU heating and 17,000 BTU cooling)
- Third roof air conditioner with heat pump (with upgrade to Onan® 10 kW generator)

### Power Sources

- 12-volt battery boost system
- Automatic low-voltage generator start
- Onan® 8.0 kW "quiet" liquid-cooled diesel generator with remote start/stop, on electric roll-out
- Onan 10 kW "quiet" liquid-cooled diesel generator with remote start/stop, on electric roll-out, with third roof A/C option
- 2000-watt solid-state inverter and 100-amp solid-state converter/charger with 60-amp chassis battery charge system
- Magnum® 2800-watt inverter (with electric refrigerator option)
- Two 8D AGM domestic deep cycle batteries
- Four AGM 8D domestic deep cycle batteries (with electric refrigerator option)
- 50-amp shore cord on manual reel with 30-amp adaptor
- 50-amp shore service surge protector

### Plumbing Features

- **Heated and insulated fiberglass plumbing bay includes:**
  - Hand-held spray fixture
  - Pressure regulated city-water to water-tank fill
  - Fresh-water low-point drain valve
  - Dump valves
  - Hot and cold faucet
  - Sewer hose storage
  - Telephone and cable TV hook-ups
- 10 gallon LP/electric water heater
- Aqua-Hot® 525 hydronic water heating system with electric back-up
- 12-volt on-demand water pump
- Water pump switch in bath area
- Black-water tank flush system
- Total house water filtration system



# THE 2009 ALLURE 420 43' FOUNDER'S EDITION

2009 ALLURE 420 SPECIFICATIONS FOUNDER'S EDITION

2009 ALLURE 420 SPECIFICATIONS FOUNDER'S EDITION

- Electronic tank monitoring system
- Pre-plumbed and pre-wired for washer/dryer

## Tank Capacities

- 88 gallon fresh-water
- 69 gallon gray-water
- 53 gallon black-water
- 32 gallon LP
- 100 gallon fuel

## Exterior Conveniences

- Powder-coated steel frame structure entry door with auto-hold, deadbolt, key fob keyless entry, and screen door
- Lighted entry door assist grip
- Patio light
- Electric entry doorstep with automatic override at ignition
- Retractable non-skid entry steps
- **Carefree® standard awning package:**
  - Window awnings for bedroom window and all slide-out rooms
  - Summit slide-out covers for all DS slide-out rooms
  - Kover II slide-out cover for PS living room/galley slide-out
  - Eclipse power patio awning with wind sensor and remote
  - Freedom III electric awning over entry door
  - Pull rod
- Power adjustable TV antenna with coaxial cable and 12-volt signal boost
- 120-volt receptacle, coaxial cable, and telephone jack (storage bay)
- Chrome dual air horns
- Thermostatically-controlled/heated, remote control chrome side-view mirrors with turn signals and adjustable arms
- HWH® 4-point Computer Area Network (CAN) automatic air-leveling system
- Daytime running lights
- Fog lights
- Four curb lights
- Large halogen headlights
- Marker lights
- Lighted, pass-through exterior storage bays with carpet lining and insulated doors
- Single-directional, half-bay roll-out storage tray(s)
- Dual-directional, full-bay roll-out storage tray(s)
- Full rear mud flap with stainless steel trim
- Mud flaps behind dual tires
- Polished stainless steel exhaust pipe tips for generator, Aqua-Hot® 525, and engine

- 3M® nose and entry door area protectant
- Clear-coat exterior
- Exterior paint scheme (choice of two color themes)
- Dual-pane insulated windows
- Ladder with universal assist extension
- Retractable engine light with remote reel
- Two fuel cap holders
- Sunscreen windshield cover

## Slide-Out Room Special Features

- Centrally located switches for slide-out room controls
- Flat floor living room
- Power Gear® room-extension mechanisms for A, B, and D slide-out rooms
- Awnings extend and retract with slide-out rooms
- Bedroom (PS): HWH® lateral-arm slide-out room-extension mechanism

## Slide-Out Room Dimensions

43' Founder's Edition

SLIDE-OUT	WIDTH	DEPTH	HEIGHT
A. Living room	12'3"	2'8"	6'4"
B. Galley	12'8"	1'8"	6'3"
C. PS Bedroom	5'10"	1'7"	5'5"
D. DS Bedroom	7'0"	2'0"	5'3"

## Options Summary

- **Powertrain:** Cummins® ISL engine paired with Allison 3000 MH transmission, producing 425 HP at 2200 RPM and 1200 ft-lbs torque at 1300 RPM (meets 2007 EPA emissions requirements)
- Engine features:*
  - 8.9 liters (543 cubic inches)
  - 2-stage engine brake with brake light activation
  - Electronic Control Module (ECM)
  - Alternator: 160 amps
  - Alternator: 200 amps (with electric refrigerator option)
  - 120-volt, 1,000 watt engine block heater (when hydronic heat is not optioned)
  - Sight glass for coolant tank
  - 5-year/100,000-mile engine warranty
- Transmission features:*
  - Allison 3000 MH transmission with PTO
  - Six speed automatic with two overdrive gears
  - Keypad electronic shifter with digital display
  - 5-year/unlimited-mile transmission warranty (with TranSynd™ fluid)

- Villa 6-way power-adjustable driver and passenger seats with 3-point restraint and adjustable arms, driver sliding seat cushion and passenger seat power footrest (required for Canada)
- Driver sliding seat cushion and passenger seat power footrest
- SmarTire® II tire monitoring system
- Garmin® GPS navigation system with XM Smart Antenna and color LCD touch-screen interface (XM weather, XM traffic, and XM radio available with subscription)
- Stationary satellite system or In-motion satellite system
- In-motion satellite system and high definition receiver
- 37" LCD high definition TV in overhead dash with five ceiling speakers and subwoofer
- 32" LCD high definition mid-coach TV
- Elliptical ceiling light fixtures with etching
- **Choice of cabinetry:**
  - Light cherry
  - Medium cherry
  - Maple
- Sculpted living room carpet
- Custom interior décor kit (preset)
- Full tile living room floor
- Radiant floor heating (available with full tile floor option)
- Tile pattern upgrade
- Washer/dryer combo
- Stacked washer and dryer
- Air spring mattress (only available with hide-away sofa)
- **Choice(s) of the following:**
  - J sofa
  - Hide-away sofa on passenger-side
  - Ultraleather® passenger-side sofa
  - Computer table with charging center (replaces occasional table)
  - Sleeper café dinette with wood table
  - Two additional folding chairs
  - Norcold 12 cu ft 2-way refrigerator with ice maker and stainless steel doors
  - Norcold 12 cu ft 2-way refrigerator with ice maker, water dispenser, and stainless steel doors
  - Jenn-Air® 22 cu ft two door side-by-side electric refrigerator/freezer with AGM batteries, 200 amp alternator, and 2800-watt inverter/converter
  - Advantium® Speedcook stainless steel microwave/convection oven with power hood
  - SHARP® microwave (required for Canada)

- Drop-in 3-burner gas cooktop with 21" oven
- King bed 72"x77"
- Air chamber mattress queen bed
- Max storage
- Tub/shower combination
- Third roof air conditioner with heat pump (with upgrade to Onan® 10 kW generator)
- Magnum® 2800-watt inverter (with electric refrigerator option)
- Four AGM 8D domestic deep cycle batteries (with electric refrigerator option)
- Onan 10 kW "quiet" liquid-cooled diesel generator with remote start/stop, on electric roll-out, with third roof A/C option
- Automatic low-voltage generator start
- Aqua-Hot® 525 diesel-fired hydronic central heating system (50,000 BTU) with zone control and engine preheat
- Aqua-Hot® 525 hydronic water heating system with electric back-up
- Single-directional, half-bay roll-out storage tray(s)

- Dual-directional, full-bay roll-out storage tray(s)
- Side-view cameras on rear-view monitor display
- Sunscreen windshield cover
- Ladder with universal assist extension
- 3M® nose and entry door area protectant
- Factory delivery
- Ultimate factory delivery

**IMPORTANT NOTICE:** Country Coach does not represent or warrant that its motorcoaches can lawfully be operated on all roads or in all states. Laws restricting the length, width, and/or weight of vehicles vary from state to state. Depending on the model, some Country Coach motorcoaches (as well as similar sized motorcoaches produced by other manufacturers) may not legally be used on certain roads or in certain states, or may only be used on such roads or in such states with special permits or license endorsements. It is the responsibility of each prospective purchaser of a motorcoach to determine any limitations or restrictions on the use of the motorcoach in the states in which the purchaser intends to use it.

Due to constant product improvements, the styling, design, equipment and construction are subject to change without notice or obligation. We reserve the right to make changes, but are happy to verify any item on request. **Some items featured may be optional.**



Tribeca interior with light cherry cabinetry

● Standard Equipment ○ Optional Equipment

● Standard Equipment ○ Optional Equipment

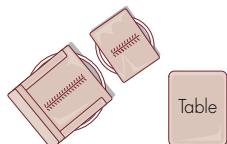
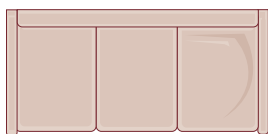


# THE 2009 ALLURE 420 43' FOUNDER'S EDITION

2009 ALLURE 420 SEATING CHOICES FOUNDER'S EDITION

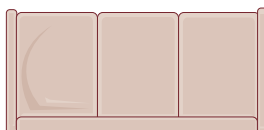
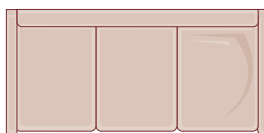
## SEATING ARRANGEMENTS

### SEATING 1



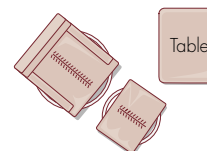
(DS) Sofabed  
(PS) Euro recliner  
with ottoman and  
occasional table

### SEATING 2



(DS) Sofabed  
(PS) Sofabed  
*Cannot choose two  
J sofas  
or two hide-away  
sofas*

### SEATING 3

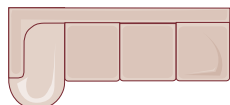


(DS) Euro recliner  
with ottoman and  
occasional table  
(PS) Sofabed

*DS = Driver-Side, PS = Passenger-Side*

## SELECT YOUR FAVORITE SLEEPER SOFABED

### J Sofabed



For the Allure 420 Founder's Edition, Sofabeds are often available in standard and J configurations.

In each configuration, two styles of sofabed may be available.

### Sofabed



## STYLES

### Fold-out Sofabed

Style features a residential sofabed design. For conversion to bed, lift the sofabed seat up and out to a horizontal position. Provides a sleeping surface faced with sofa fabric.

### Hide-away Sofabed

Style features a residential sofabed design. For conversion to bed, remove the seat cushions and pull out the hide-away bed frame to unfold and extend the mattress. Provides a conventional or air mattress sleeping surface.

# COUNTRY COACH

THE WORLD'S FINEST MOTORCOACHES

[www.countrycoach.com](http://www.countrycoach.com)

### Customer Care Center

210 East Sixth Avenue, Junction City, Oregon 97448, 800-654-0223, 541-998-3001

### Corporate Office

135 East First Avenue, Junction City, Oregon 97448, 800-547-8015, 541-998-3720