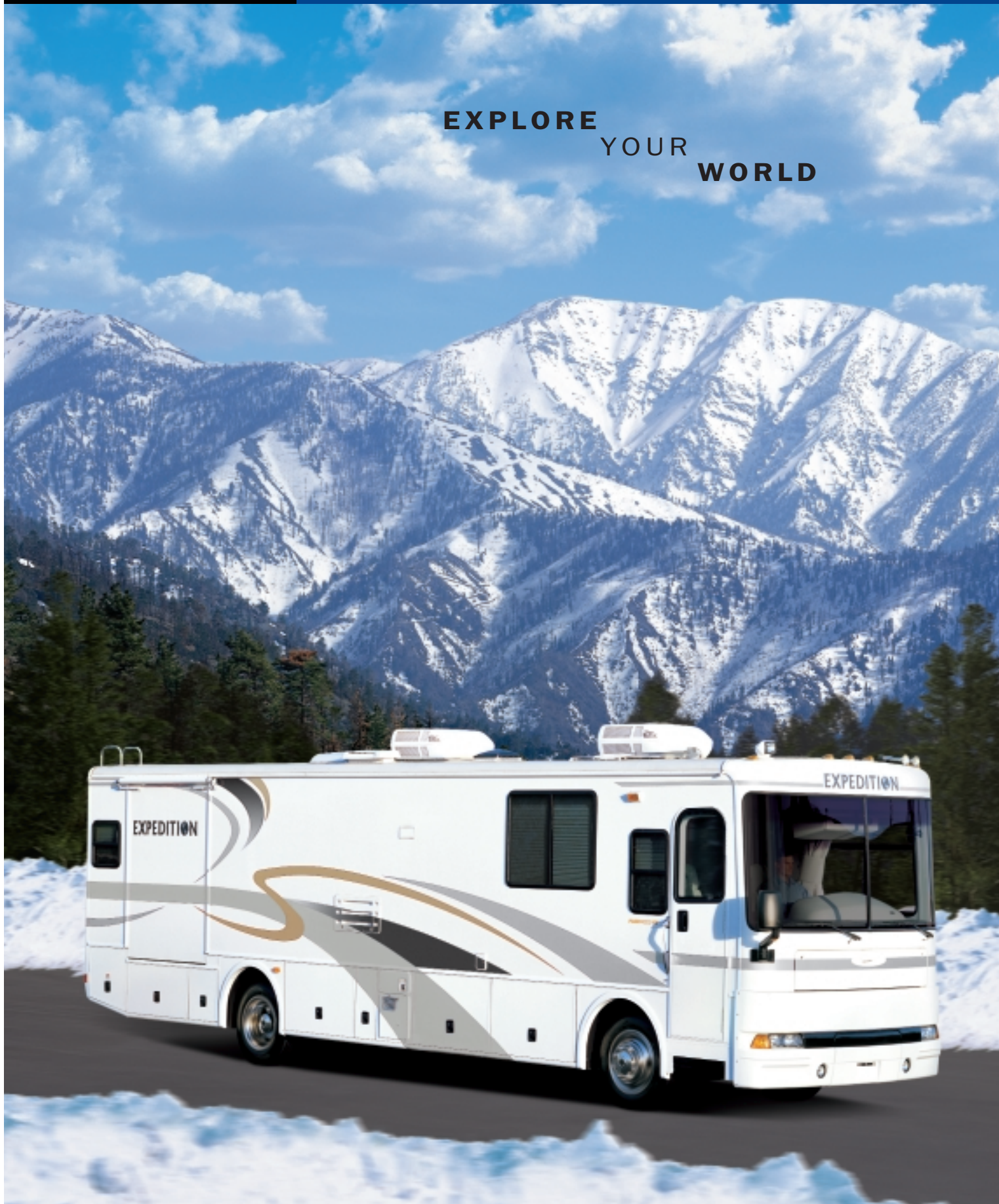


**EXPEDITION™**

**2 0 0 1**

**FLEETWOOD.RV**

**EXPLORE  
YOUR  
WORLD**



# Explore

When was the last time you lifted someone's spirits?

Made them smile? No, made them laugh.

It doesn't take much. A single idea. A simple action. Get away and explore.

Take a journey beyond the horizon, where the sun sets over a cascade of pines.

Where night falls with a whisper and morning booms with brilliance.



*The Expedition's stylish look has quality written all over it with name-brand furniture and appliances like Flexsteel,<sup>®</sup> Maytag,<sup>®</sup> Sharp,<sup>®</sup> Panasonic,<sup>®</sup> and Dometic.<sup>®</sup>*



*With your standard 27" Panasonic<sup>®</sup> TV, you can add an optional Entertainment Package that includes a DVD player, CD changer, bedroom radio and DHS Home Theater Sound System.*



*The residential-style galley makes mealtime a pleasure. Available is an optional, large 12 cu.ft. side-by-side Dometic<sup>®</sup> refrigerator with ice maker and a durable countertop of Corian.<sup>®</sup>*

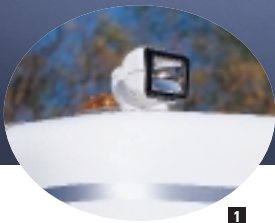
**After an adventurous day outdoors, a refreshing world awaits you indoors.** Settle back and prepare your favorite meals in your spacious galley. There's plenty of countertop space made of Corian,<sup>®</sup> to spread out all your gourmet ingredients. And cook with name-brand appliances like a Maytag<sup>®</sup> range/oven and a Sharp<sup>®</sup> convection/microwave—perfect for bringing out the culinary chef in you. Then there's

a choice of Brentwood Cherry or Anderson Walnut for eye-catching cabinetry that features raised-panel doors and drawers.

Your contemporary home-away-from-home has day/night-pleated shades throughout, soft window treatments in the bedroom and matching valance/lambrequins in the living area—as pleasing to your eye as the plush carpeting is to your toes.

Expedition.<sup>™</sup> You'll be ready to explore your new inner world.

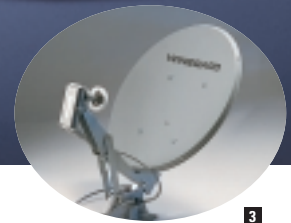
# Explore the



1



2



3

**1** Entering a dark campsite is made easier with the far-reaching optional exterior spotlight that's easily maneuvered from inside the coach.

**2** Hookups are easily accessed from the driver's side. Adjacent is the wash station for convenient outside cleaning.

**3** Every Expedition comes prewired for an optional Wineward® satellite dish.

**4** A coach-length, aluminum drip rail prevents discoloring of the sidewall.

**5** Polyethylene storage compartments are non-corrosive to prevent rusting.

**6** Practical, single die-cast metal paddle latches are flush-mounted for a luggage door system that's durable and easy-to-operate.

**7** Single key access to Expedition's entry door and compartments provide practical entry and convenient storage.

**8** Expedition's automotive-bonded windshield is designed to prevent moisture intrusion and provide an unobstructed panoramic view.

Every day is a chance to capture a moment with friends, with family.

To enjoy each other's company. To tell tales and record memories.

Every day a journey ends and another begins.

When was the last time you lifted someone's spirits?

We'll ask you when you get back.

*possibilities  
in a Expedition.*



*Eating on the road takes on a new look of elegance with quality furniture and decor lighting.*



*The driver's compartment features easy-to-reach controls. The optional Driving Package, with leather seating and dash fans, makes sitting at the helm luxurious.*



*The Expedition brings exquisite style and function into the bedroom with a built-in 20" Panasonic® TV, spacious drawers and a brightly-lit vanity.*



*A color-coordinated headboard that tilts out from the wall makes watching TV or reading more comfortable.*

*Outside* **Outside, the Expedition inspires passion for the road and the great outdoors.** Inside, the stunning and sophisticated styling might make it harder to decide where you want to spend more of your time.

One of your other decisions will be between three different interior decors with palettes of color that blend perfectly with the Expedition's upscale design. Colors and patterns are

accentuated by the new coordinated decor lighting system that features dual switches for a combination of lighting needs.

The directions you take on your journeys are all up to you. To make your driving easier, we've included cruise control, a tilt and telescoping steering wheel, and a multi-functional sun visor.

Why wait any longer? Get your life started on a marvelous journey, with Expedition.

## Take the new Expedition™ diesel motor home for the journey of your life.

Introducing the Expedition™—Fleetwood's newest RV—offered with five unique option packages and perfectly designed for your lifestyle of fun and adventure. Choose one or all of these packages: Appliance, Driving, Accessory, Entertainment and Electrical upgrade. The Expedition is destined to take its place among the best in Fleetwood history.

Arrive in this sleek and stylish motor home with a ride that is smooth and quiet, due to its rear engine diesel platform and high-riding suspension. Then add an optional Driving Package to the cab area with luxurious power-controlled and heated leather seats as well as dash fans for comfort. You'll feel as though your excursion to a new destination took no

time at all. Then get ready for on-the-road convenience with an optional Appliance Package of washer/dryer, central vacuum and a large 10-gallon gas/electric water heater.

When entertaining family and friends, available floor plans feature multiple slide-outs for space and comfort. Express your desires with an optional Winegard® satellite dish or the optional Entertainment Package that includes a DVD player, CD changer, bedroom radio and DHS Home Theater Sound System. The opportunity is yours to make Expedition as unique as you.

Go explore. Rediscover your favorite spots. Journey to places you've never been, with Expedition.



# Features for 2001 Expedition

**Our engineering may set us apart from the rest, but the things you'll notice most when you and your family take a trip, are the top-of-the-line features. Here are but a few of the items that make life on the road with Expedition memorable.**



*New decor lighting throughout includes an overhead swivel reading lamp in the bedroom to suit your style of living.*



*Make finding your way around the country easier with the optional satellite-connected VDO Dayton Model MS 5000 GPS navigation system complete with software.*



*An optional electronic climate control system with dual A/C controls enables a separate climate in the front and rear of the coach.*



*Included in the optional Entertainment Package, get "live" sound with the DHS Home Theater Sound System.*

*Clothes will stay fresh, due to the large cedar-lined wardrobe.*



*Feel at home with the roomy residential-style, handcrafted cabinetry that features raised-panel doors with adjustable shelves and a fit and finish that is second to none.*

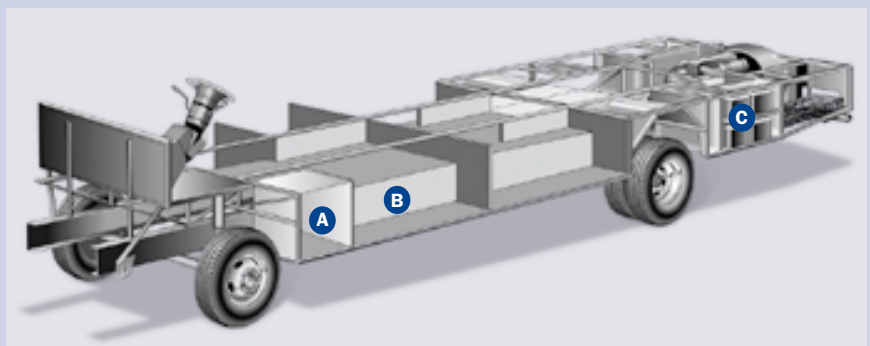


*Expedition's basement space includes lots of storage for your gear.*



## The Diesel Power Platform II Makes the Difference

Expedition's quality begins long before the features come on board. We begin by building on our exclusive diesel Power Platform II, a unique truss design welded together using tubular steel that's durable, strong, and dependable. The result is a quiet and nearly flawless ride, increased floor strength, and substantially more storage space below. An all-steel foundation further reduces stress loads on the sidewalls and minimizes chassis flex on uneven roads.



- A** All exterior compartments are reinforced with substantial steel outriggers for increased durability and years of cargo carrying.
- B** Full basement construction maximizes space beneath the floor, encloses the heated water and holding tank compartments and provides easy-to-reach storage.
- C** Easy access compartments let you get to Expedition's batteries and dual-battery charge control.

*Drawing is for illustrative purpose only to highlight aspects of motor home construction. Actual motor home design depends on model and is subject to change.*

# 2001 Expedition Standard Features

## Appliances

- Front 27" Panasonic® TV in Overhead
- Rear 20" Panasonic® TV
- Panasonic® VCR
- Video Switch Box TV/VCR
- Smoke Detector/Alarm
- LPG Detector/Alarm
- CO Detector/Alarm
- Furnace 20M/25M BTU Dual
- 6-Gallon Quick-Recovery Water Heater with D.S.I.
- 22" 3-Burner, High-Output Cooktop
- Power Range Hood with Light
- RV System Monitor Panel
- Folding Range Cover
- Dual High Efficiency A/C with Solar Panel
- Water Heater Bypass
- Inverter/Converter (1000 Watt)
- Porcelain Toilet with Water Saver
- Toilet Tank San-T-Flush™ System
- Sharp® Convection Microwave
- 8 cu. ft. Dometic® Refrigerator (Large Double Doors)
- Single Lever Galley Faucet
- Water Filter with Faucet
- Demand Water Pump with Filter
- Power Bath Vent
- TV Antenna
- Fan-Tastic® Power Roof Vent in Galley
- Fire Extinguisher
- Telephone Jack in Dash and Bedroom
- Rear Speakers in Bedroom

## Body Structure

- Vacubond Lower and Upper Floors
- Vacubond Walls with Smooth High Gloss Exterior Fiberglass
- Radius Roof with Duct for Air Conditioning
- Rubber Roof
- Steel Floor/Wall/Ceiling Framing

## Electrical

- Patio Receptacle
- 120V/12V AC/DC Converter Central Electric
- 120V/12V Wire Raceways
- Water Pump Switching-3 Way
- 6.5kW LPG Generator
- 30 amp Service
- Wall Switches
- 2-6V/Deep Cycle 218 amp House Batteries
- Prewired for Satellite Dish

## Exterior

- Full Fiberglass Front Cap
- Slide-Out Room Living Area
- Side Opening, Engine-Access Door
- Fiberglass Front and Rear Bumpers
- Fiberglass Wheel Trim
- Aerodynamic Bus Styling
- Radius Entry Door with Deadbolt Latch
- Dual-Pane Slider Windows

## Exterior (cont.)

- Utility Compartment with Exterior Washdown
- 4-point Manual Hydraulic Levelers
- Roof Ladder
- Exterior Assist Handle
- Remote/Heated Exterior Rear View Mirrors
- 20' Sewer Hose
- Park Cable Receptacle
- Awning Rail/Drip Molding (Both Sides)
- Power Entry Step
- Dual Battery Charge Control
- Porch Light (Doorside/Roadside)
- 25' Potable Water Hose
- Exterior Shower
- 3 Colorway Graphics to Match Decor

## Exterior Automotive

- Large, Curved Aerodynamic Windshield
- Undercoating
- Stainless Steel Wheel Simulators
- Valve Extenders
- Mud Flaps
- Underhood Utility Light
- Steel Surface on Bulkhead
- Trailer Hitch with 7-Pin Electrical Hookup
- Halogen Headlights
- Fog Lamps
- Rear Vision Camera
- Windshield Wipers with Wet Arm
- Freightliner® Chassis 260HP

## Exterior Storage

- Insulated Luggage Doors (Fiberglass with Aluminum Frame)
- Single Paddle/Metal Latches
- Continuous One-Piece Bulb Seal
- Central Utility Compartment
- Hidden Stainless Steel Latch Rods
- Gas-Lift Strut Supports
- Lights in Compartments
- Steel Seal Frames

## Interior

- 3 Interior Decors
- Woven Jacquard Feature Fabrics
- Skylight in Tub/Shower
- Glass Shower Door with Bright Brass Frame
- Flexsteel® Furniture
- Wood Grain-Alder
- Wall-to-Wall Nylon Carpet-Trackless Plush
- Carpet Pad
- Vinyl Floor Covering in Galley & Bath
- Wood Drawers
- Roller-Guide Drawer Slides with Transit-Ship Locks
- Radius Corner Cabinetry
- Large Overhead Cabinets with Adjustable Shelves
- Brass Cabinet Hardware
- Reclining Bucket Seats (Driver/Passenger)
- 3-Point Front Seat Belts

## Interior (cont.)

- Metal Mini Blind in Galley (34N)
- Vinyl Pull-Shade in Entry
- Pleated Shades
- Bedspread with Decor Pillows
- Restonic® Pillow Top Innerspring Mattress
- Cabinet Doors & Drawers-Alder
- Corian® Solid-Surface Galley Countertops
- Crown Molding
- Headboard-Adjustable
- Beveled Mirrors
- Cedar Lining in Wardrobe
- Window Coverings (Color Coordinated to Decor)
- Wainscot Paneling in Bedroom Area
- Bath Door Trims-Alder
- Corian® Galley Sink Cover/Cutting Board
- Corian® Edge Lavy Top with Porcelain Bowl
- Bright Brass Bath Accessories
- Residential Seat Styling
- Raised-Panel Cabinet Doors-Alder
- Adjustable Cabinet Shelves (Selected Cabinets)
- Solid Divider Doors
- Large, Porcelain, Double Sink-Galley

## Interior Automotive

- Intermittent Wiper Control
- Multi-Function Sun Visor
- Driver-Side Window Shade
- Cruise Control
- Radio with Cassette AM/FM/MX Electronic Tuning
- Auxiliary Start Circuit
- Battery Disconnect System
- Auto A/C/Heater Combo
- Radio Switch-Main/Auxiliary
- Soft Surface Automotive Dash
- Tilt/Telescoping Steering Wheel
- Driver/Passenger Captain's Chairs with Reclining Back/Slide Controls
- Solar Battery Charger
- Ceiling Ducted Roof Air Conditioning

## Interior Lighting

- Fluorescent Ceiling Lights with Dual Bulbs
- Decor Lighting
- Incandescent Lighting
- Wall Sconces
- 4-Light Brass Vanity (36T)
- Make-up Lights in Bath

## Platform Construction

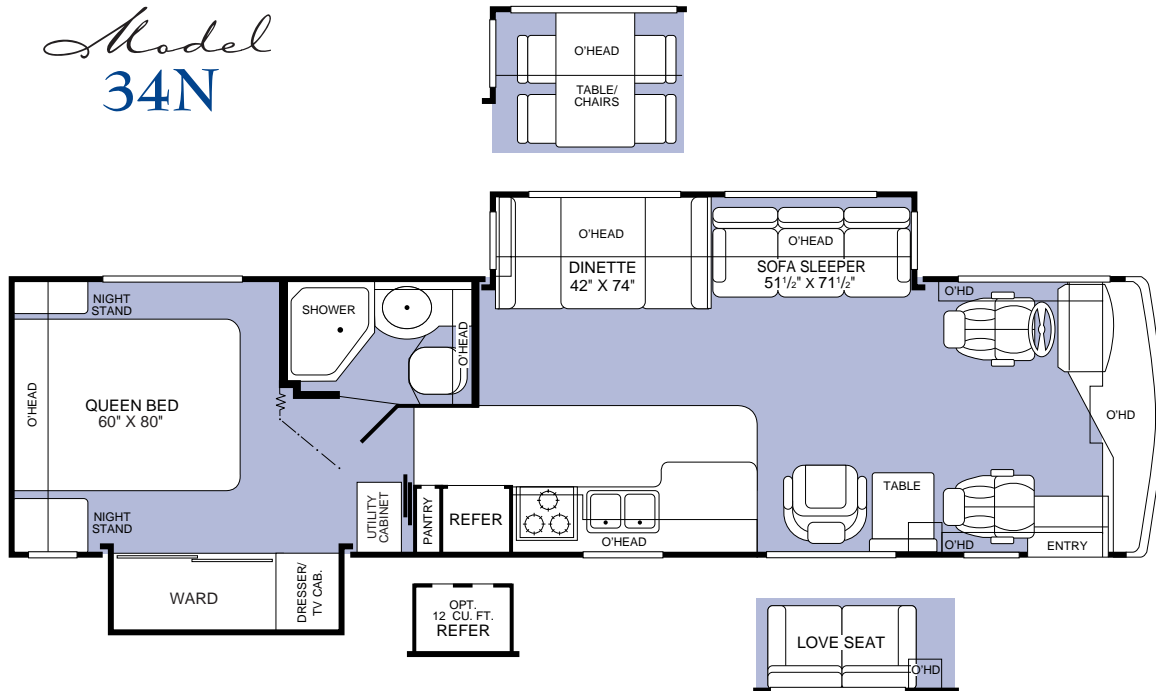
- Power Platform II Floor Configuration
- Heated Water & Holding Tank Compartments
- Polyethylene Luggage Compartment Boxes
- Steel Truss System

## Slide-Out

- Living Room (Dinette/Sofa)
- Wardrobe

# 2001 Expedition Floor Plans *Floor Plans*

## Model 34N



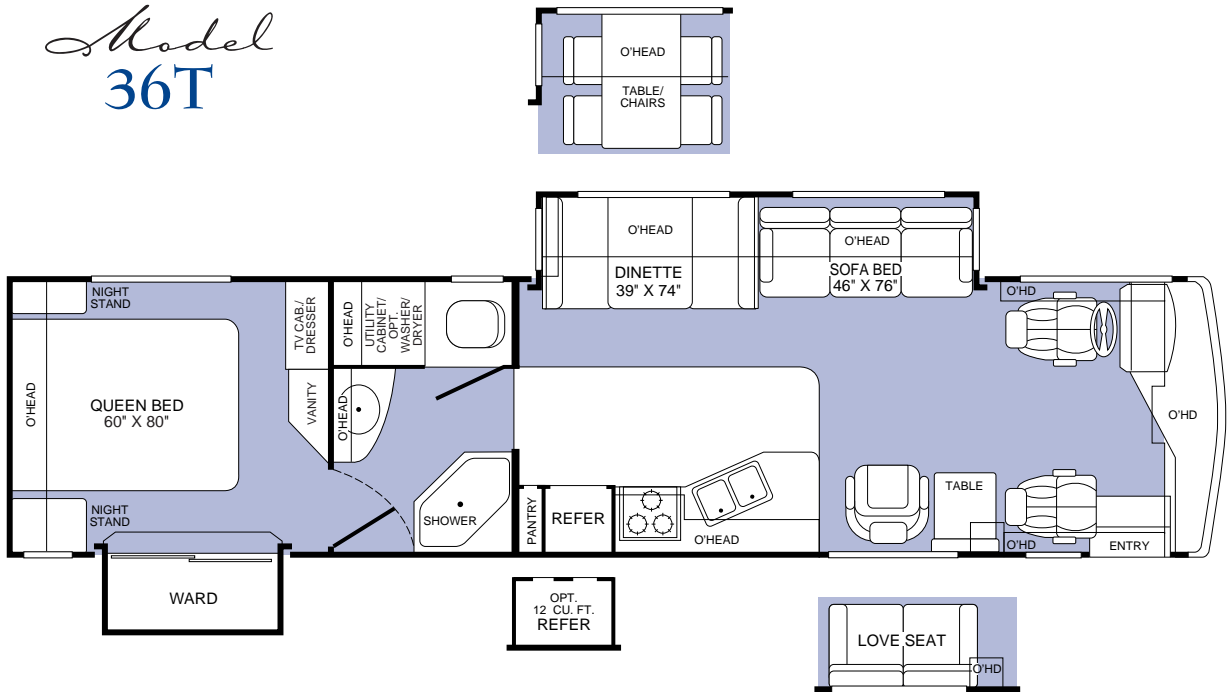
- Wardrobe/Dresser/TV Cabinet Slide-Out
- Island Queen Bed

- Dinette or Optional Table with Chairs
- Fully Enclosed Bathroom
- Optional 12 cu. ft. Refrigerator with Ice Maker

- Dinette/Living Room Slide-Out with Sofa Sleeper
- Swivel Chair with Table or Optional Love Seat



# Model 36T



- Island Queen Bed
- Vanity Table
- Wardrobe Slide-Out

- Optional Washer/Dryer
- Optional 12 cu. ft. Refrigerator with Ice Maker
- Dinette or Optional Table with Chairs

- Dinette/Living Room Slide-Out with Sofa Bed
- Swivel Chair with Table or Optional Love Seat

# 2001 Expedition Optional Packages

Accessory Package		34N	36T
CB Radio		OPT	OPT
Roof-Mounted Air Horns		OPT	OPT
Front Mask		OPT	OPT
Remote Roof-Mounted Spotlight		OPT	OPT
Appliance Package		34N	36T
Washer/Dryer		N/A	OPT
Central Vacuum		OPT	OPT
10-Gallon Gas/Electric Water Heater		OPT	OPT
Driving Package		34N	36T
Dash Fans		OPT	OPT
Leather/Heated/Power Driver and Passenger Seats		OPT	OPT
Electrical Upgrade Package		34N	36T
7.5kW Diesel Generator		OPT	OPT
2000 Watt Inverter/Converter		OPT	OPT
Entertainment Package		34N	36T
CD Changer		OPT	OPT
DVD Player		OPT	OPT
DHS Home Theater Sound System		OPT	OPT
Bedroom AM/FM Cassette Radio		OPT	OPT
Other Options		34N	36T
<b>Appliances:</b>	3-Burner, Drop-in Range	OPT	OPT
	12 cu. ft. Side-by-Side Dometic® Refrigerator w/Icemaker	OPT	OPT
	22" 3-Burner, High-Output, Cooktop Range w/Oven	OPT	OPT
<b>Exterior:</b>	Awning—USA	OPT	OPT
<b>Exterior Automotive:</b>	CSA Package, Freightliner®	OPT	OPT
<b>Interior:</b>	Fan-Tastic® Power Roof Vent (Bath)	OPT	OPT
	Love Seat	OPT	OPT
	Free-Standing Dinette and Chairs	OPT	OPT
	Walnut Wood Interior	OPT	OPT
	Driver Power Seat	OPT	OPT
	6-Way Power Passenger Seat	OPT	OPT
<b>Interior Automotive:</b>	DSS Manual Lift/Winegard® Satellite Dish	OPT	OPT
	GPS System	OPT	OPT

## What happens when you've been setting the standards of RV quality for over 50 years?

**You set them even higher. Our customers expect us to.** As a matter of fact, first-time RV buyers, who bought other manufacturers' RVs, tell us they wish they'd spent a little bit more for better quality. That's why experienced buyers are more likely to buy a Fleetwood RV.\* That's also why Fleetwood RV invests in people, systems and manufacturing quality that are second to none. This may make us a bit more expensive than some brands, but satisfied Fleetwood RV owners know we're worth it.

**People...** We hire engineers, designers and drafters from leading automotive design schools. Our front-line associates are well-trained, quality-minded men and women who take pride in their work. No other manufacturer has a larger, more professional team behind their products.



**Systems...** Our product development team uses state-of-the-art, computer-assisted-design (CAD)

technology to build in fit and finish right from the drawing board. Each product is meticulously documented with over 3,500 pages of engineering drawings. A computerized bill of materials details over 20,000 pieces that go into your motor home. And, a vehicle specific *Electronic Parts Catalog* shows 600-800 common parts... so, if you need a new part, your authorized Fleetwood RV service dealership knows exactly what you need. Some manufacturers may not invest the extra time and money to accurately document their products, which could cost you plenty in headaches and hassles down the road.

\*Angus Reid RV Market Segmentation Study, 1998

# 2001 Expedition Specifications

Freightliner® Chassis	34N	36T	
Engine LD	5.9L	5.9L	
Wheelbase	208"	228"	
GVWR lbs/kgs (1)	23,000/10,433	23,000/10,433	
Front GAWR lbs/kgs (2)	8,000/3,628	8,500/3,855	
Rear GAWR lbs/kgs (2)	15,000/6,810	15,000/6,810	
Base Weight lbs/kgs (3)	18,400/8,345	19,100/8,662	
GCWR lbs/kgs (4)	28,000/12,701	28,000/12,701	
Hitch Rating/Tongue Weight (lbs)	5,000/500	5,000/500	
Hitch Rating/Tongue Weight (kgs)	2,268/227	2,268/227	
Fuel Capacity gal/lbs (7.1lbs/gal)	90/639	90/639	
Dimensions	34N	36T	
Length (5)	34'6"	36'6"	
Height (with A/C)	12'1"	12'1"	
Width (maximum) (6)	102"	102"	
Interior Height (maximum)	79"	79"	
Interior Width (maximum)	96"	96"	
Liquid Capacities (Gallons/Liters)	34N	36T	
Fresh Water Holding Tank (8.3lbs/gal)	80/302	80/302	
Grey Water Holding Tank (8.3lbs/gal)	50/189	50/189	
Black Water Holding Tank (8.3lbs/gal)	50/189	50/189	
Appliance LPG Tank (4.5lbs/gal) (WC) (7)	25/95	25/95	
Generator LPG Tank (4.5lbs/gal) (WC) (7)	30/113	30/113	
Water Heater Tank (8.3lbs/gal)	6/23	6/23	
Metric Conversions:	Feet to meters: ft x .304 = meters	Lbs to kgs: lbs x .454 = kgs	Gallons to liters: gal x 3.78 = ltrs

- GVWR (Gross Vehicle Weight Rating): Means the maximum permissible loaded weight of the motor home. The GVWR is equal to or greater than the sum of the unloaded vehicle weight plus the net carrying capacity.*
- GAWR (Gross Axle Weight Rating): Means the maximum permissible loaded weight a specific axle is designed to carry.*
- BW (Base Weight): Means the weight of the motor home without fuel, options, water, cargo or passengers.*
- GCWR (Gross Combined Weight Rating): Means the value specified by the motor home manufacturer as the maximum allowable loaded weight of this motor home with its towed vehicle. Towing and braking capacities may differ. Refer to Fleetwood and chassis manufacturer manuals for complete information.*
- Length taken from front bumper to rear bumper.*
- Excludes safety equipment and awnings.*
- Tank Manufacturer's listed water capacity (WC). Actual LPG capacity is 80% of water listing as required by the safety code.*

**IMPORTANT – PLEASE READ:** Product information and photography included in this brochure were as accurate as possible at the time of publication. For the most current product information and changes, please visit our website at [www.fleetwood.com](http://www.fleetwood.com) or contact your local Fleetwood dealer. Subsequent refinements may be evident in the actual product. Prices and specifications are subject to change without notice. All weights, fuel, liquid capacities and dimensions are approximate. Fleetwood has designed its recreational vehicles to provide a variety of uses for its customers. Each vehicle features optimal seating, sleeping, storage and fluid capacities. The user is responsible for selecting the proper combination of loads to ensure that the recreational vehicle's capacities are not exceeded.

TuffPEX™ is a trademark of Uponor.

**Manufacturing...** We only do what we know we're best at — building a quality-finished motor home. When it comes to the appliances, doors, windows, and furniture, we partner with other recognized leaders to do what they know best... top names like Sharp®, Panasonic®, Dometic®, Restonic® and Flexsteel®. Some manufacturers will tell you partnering like this makes us final assemblers. We call it working smarter to bring you more value.



*We build our cabinets and secure them to the floor before the walls go up to add strength, and help eliminate noises.*

**Quality...** The quality outside reflects the quality inside — places where you can't see it, but where it really counts. For example, we use vacubonded sidewall construction that's required for the special needs of a motor home. Windshields bonded to metal on most models. Our new TuffPEX™ plumbing system is able to withstand temperatures as low as -40° F. And now offered on our mid- to high-end Class A motor homes, a new, revolutionary exterior sidewall material which contains no wood products to guard against swelling, rotting and delamination. Before any unit rolls off the line at each of our plants, it goes through a documented checklist containing hundreds of items specific to that product. It won't

leave the plant until it has met our high standards. And, the list goes on.

**For strength, noise reduction and insulation, composite sidewalls and floors are constructed of steel, plywood and polystyrene foam.**



From the drawing board to the assembly line, we will continue to develop and manufacture quality products for our customers.

**Fleetwood RV...** Setting standards beyond your expectations.

# Fleetwood's Far-Reaching Warranty and Service Program



## Limited One-Year/ Three-Year Warranty

Leaving the Fleetwood dealership after you've purchased your RV doesn't mean leaving each dealer's commitment to your satisfaction behind.

OWNER CARE, Fleetwood's extensive warranty and service program, provides one/three year(s) of dedicated customer satisfaction. OWNER CARE stands out as one of the RV industry's most comprehensive programs and includes systems and applications, construction, no deductible and no service charge. See your nearest Fleetwood dealer for a full explanation of benefits and restrictions.

## Fully Transferable

At Fleetwood RV, we're confident in our products and don't hesitate to stand behind them. Your newly purchased Fleetwood RV comes with one of the industry's most comprehensive warranties, fully transferable for the first 12 months.

## National Coverage

Have a question about your new Fleetwood RV? We've got it covered. The nation's largest trained dealer network—ready, willing and able to provide you with the services you need to make every moment of owning your RV enjoyable. Over 1,100 Fleetwood dealers throughout the U.S. and Canada are available to you. With national coverage, peace of mind and complete satisfaction are just a phone call away.



## An Extra Thank You

Ask your dealer about your Thousand Trails complimentary 30-day membership certificate. It's your chance to get going in your new RV and enjoy some scenic camping, plus our way of thanking you again for your purchase of a Fleetwood RV. For more information on your complimentary membership certificate, please call

1-800-205-0606. Happy (Thousand) Trails!



# Fleetwood RV and Motor Sports: A Winning Team



Three wide in the first turn. 200 miles per hour on the back straight. Passing for the lead through the short chute. Nothing beats the excitement of NASCAR racing. Every year thousands of NASCAR fans and Fleetwood RV owners travel to races to support their favorite drivers, enjoy time with family and rekindle friendships.

RVs have become as much a part of motorsports as pit row and the checkered flag. That's why Fleetwood RV is a proud sponsor of 1999 Winston Cup Champion Dale Jarrett and the Robert Yates Racing Team.

As the number one RV manufacturer\* in the country, our winning ways continue. Fleetwood RV is now the "Official Recreational Vehicle" at nine

\*According to Statistical Surveys Jan. '99-Dec. '99

International Speedway Corporation racetracks.\*\* And for Fleetwood owners, emergency service crews are available at select tracks to ensure a trouble-free weekend. While you're enjoying the race, be sure to look for the Fleetwood RV Prize Patrol and go home with some exciting giveaways.

So this weekend, pack up your friends and family and experience the thrill of cheering on Dale firsthand, in first-class style, with Fleetwood RV.

\*\* Daytona International Speedway, Darlington Raceway, Talladega Superspeedway, California Speedway, Richmond International Speedway, Michigan Speedway, Watkins Glen International Speedway, Phoenix International Raceway, Homestead-Miami Speedway.



[www.fleetwood.com](http://www.fleetwood.com)

Visit our website to find a dealer near you, learn more about other Fleetwood products or purchase Fleetwood branded apparel. Or call 1-800-444-4905.

FOR CUSTOMER ASSISTANCE, call toll free 24 hours a day at 1-800-322-8216, visit our website, or you may write to Fleetwood Enterprises, Inc., P.O. Box 7638, Riverside, CA 92513-7638.

**IMPORTANT - PLEASE READ:** Product information and photography included in this brochure were as accurate as possible at the time of publication. For the most current product information and changes, please visit our website at [www.fleetwood.com](http://www.fleetwood.com) or contact your local Fleetwood dealer. Subsequent refinements may be evident in the actual product. Prices and specifications are subject to change without notice. All weights, fuel, liquid capacities and dimensions are approximate. Fleetwood has designed its recreational vehicles to provide a variety of uses for its customers. Each vehicle features optimal seating, sleeping, storage and fluid capacities. The user is responsible for selecting the proper combination of loads to ensure that the recreational vehicle's capacities are not exceeded.

**FLEETWOOD RV**

America's Favorite Recreational Vehicles

Fleetwood Enterprises, Inc., RV Marketing, P.O. Box 7638, Riverside, CA 92513-7638

Your local Fleetwood RV dealer is:



# Interior & Exterior Colors

Your motor home takes you to new adventures every day.

And since this home will be an enduring part of your life, we offer a selection of colors and textures that are a fine blend of classic and contemporary style.

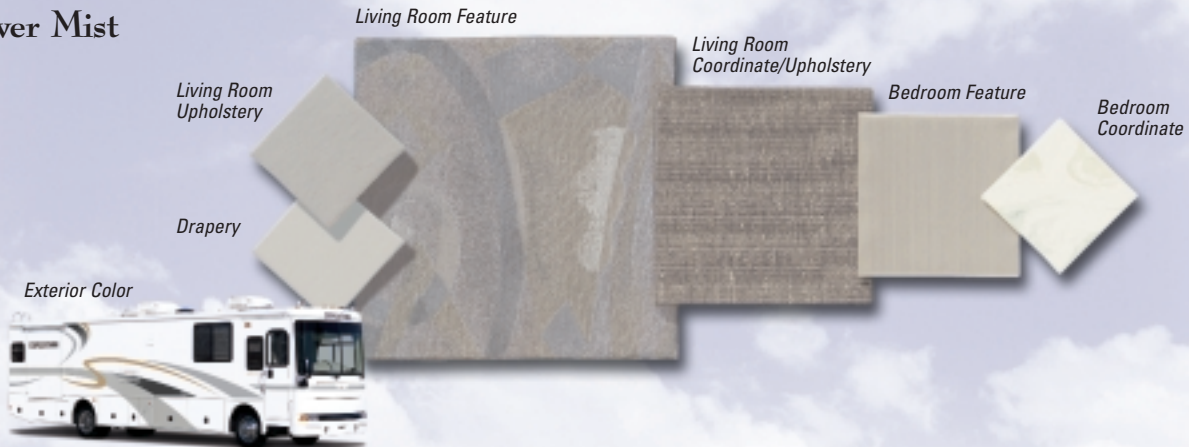
We search to obtain quality fabrics that are elegant, yet durable, to keep up with your active lifestyle.

Year after year, the look will be as welcoming to you as it is to your guests.

## Bronze Shimmer



## Silver Mist



## Plum Shadow



FLEETWOOD FAMILY FUN...  
**THE JOURNEY CONTINUES**

Where do you want to be? The possibilities are almost limitless. From mini motor homes to luxury coaches, from gas to diesel performance, there's a Fleetwood motor home to fulfill your dreams.

We know exactly how you feel, realizing there's a whole new world to experience. That's why we made sure you can choose from the broadest selection of brands and floor plans the world has to offer. It's no wonder that one out of four motor homes sold is a Fleetwood.\*

This is your journey. Take it for a spin.

*\*According to Statistical Surveys Jan.'99–Dec.'99*

**FLEETWOOD® RV**

© 2000 Fleetwood Enterprises, Inc.  
Inventory Control Number EX01B1/1st Edition 7/00

