

Spacious enough for the whole family.
Because it's called "camping" not "cramping."



2007
JAMBOREE & JAMBOREE GT
CLASS C



Wide Range of Floor Plans | Home-Like Interiors | High-Quality Construction | Extended Camping | Trustworthy Brand



Jamboree provides enough space for your family to become closer.

Family togetherness is great – provided everyone isn't tripping over each other. That's why we designed Jamboree with a wide variety of floor plans. Each plan gives everyone enough room to sleep, eat and play Go Fish in comfort. The available slide-outs provide even more living area – perfect for prickly teenagers who always want more "space." Each floor plan is furnished comfortably and decorated to feel like home, promoting those warm fuzzy feelings. Road trip!



THE DRIVER'S DASH puts the jam in your Jamboree with an AM/FM radio (satellite-ready Ford only) and CD player.



JAMBOREE 31M shown with optional entertainment center in Pebble Beach interior decor with Windsor Birch cabinetry.



SAFETY FEATURES help protect your family. Jamboree includes a carbon monoxide detector, smoke detector, propane detector, fire extinguisher, and tethers for a child's car seat.



FLEXSTEEL® FURNITURE it's not only comfortable, it also carries a lifetime warranty on the frame.

Enjoy the great outdoors with a great indoors.

Enjoy the scenery – inside your Jamboree, that is. The rich wood cabinets with arched, raised panels and the deluxe sparkling faucet might give Mother Nature a run for her money. But inside this beautiful exterior, you'll find Jamboree is built for functionality and chock-full of practical features.



THE MONITOR PANEL lets you keep an eye on your battery and tank levels, and remotely operate the generator and water pump.



A FLIP-UP COUNTERTOP gives you more room when you need it, and folds down when you don't. A sink cover provides even more countertop space. (Select models.)



THE POTS AND PANS DRAWER is so large, it can even hold your jumbo chili pot and other cookware too.



SPACIOUS STORAGE holds plenty of full-size dinnerware. After all, you shouldn't have to use salad plates for spaghetti.



The Jamboree GT. A step up that's all decked out.

When you move up to the Jamboree GT, you get even more space and more features; like more overhead storage, with pull-out baskets that make packing easier. Full basement storage so you can bring more gear. And enclosed holding tanks so you can camp all year long. Because the GT is not only a step up from Jamboree, it's a step up from other class C motor homes.



THE BACK UP MONITOR (optional) in full color helps you back up safely. You can even hear directions from your assistant through the one-way audio.



JAMBOREE GT 31W shown with optional entertainment center in Satin Steel interior decor with Windsor Birch cabinetry.



THE ENTERTAINMENT CENTER (optional) includes a 24" TV and DVD/VCR combo with 5.1 Dolby® theater sound system. Why tell ghost stories when you can watch them?



THE SOFA BED is covered with durable fabric that can handle family life. At night it makes into another comfy bed.

The Jamboree GT goes gourmet.

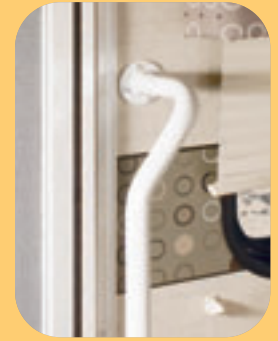
Everything's a bit more tasteful in the GT. The fabrics are more luxurious, the refrigerator is 30% larger, and lots of nifty conveniences are included, such as fresh water filtration for the whole coach. Even the driver and passenger seats are covered in Ultraleather™ for comfort and beauty. (Because the pilot and co-pilot deserve something special, too.)



THE CONVECTION MICROWAVE cooks fast like a microwave, and bakes and broils like a convection oven.



UNDER-THE-DINETTE STORAGE is the perfect place to store table linens and board games. You'll be surprised with all the storage space.



THE ENTRY ASSIST HANDLE helps you enter and exit more easily, no matter how tall you are.



FULL EXTENSION DRAWERS slide out all the way so you can even store things in the very back of the drawer.



THE SNACK TRAY keeps snacks out of laps with a rimmed tray and two cup holders built into the sofa bed.



THE DINETTE can seat four people next to a big picture window. (What a great spot to have dinner and watch the sunset.)



STRETCH OUT ON THE QUEEN-SIZE BED with innerspring mattress (select models).



THE SHOWER feels so good and toasty after a day of fishing in an icy river. The water saver feature lets you dry camp longer (select models).



UNDER BED STORAGE is the perfect place for extra sheets and blankets – even that old sleeping bag you never have to use again (standard in some models).

When a cozy bed awaits you, the stars seem to twinkle just a little brighter at night. The pleated shades block out the moonlight too.



THE DINETTE converts to another comfy bed for a tired camper. Just retrieve Teddy from the storage area underneath.



THE MEDICINE CABINET is large enough for your toiletries. With vanity lights and a big mirror, “camping hair” is a thing of the past.



WITH HANDY READING LIGHTS, THE QUEEN-SIZE BED is a great place to relax with a good book.



THE BATHROOM offers the conveniences of home, from the large sink and medicine cabinet down to the china toilet bowl.

THE CABOVER BED provides huge snoozing space instantly, thanks to the patented slider bunk. It folds easily away so nobody will bump their noggin.



HIS AND HERS WARDROBE STORAGE with mirrored doors, ends the space-sharing struggle by providing two closets (30U Model).



EXTERIOR FEATURES – JAMBOREE

TUFF-PLY ROOF is UV resistant, durable, easy to clean, and doesn't scratch like many competitors' fiberglass or aluminum roofs.

DRIP RAIL MOLDINGS channel water off the Jamboree at the front and rear, preventing those ugly streaks on the sidewalls.



TUFF-COAT® EXTERIOR FIBERGLASS SIDEWALLS are Vacu-bonded® into a strong composite structure, unlike some competitors' thin fiberglass laminate.

POWDER-COATED STEEL RUNNING BOARDS are strong, sleek and stylish.

JAMBOREE shown in Pebble Beach.

JAMBOREE / JAMBOREE GT NIFTY FEATURES ON THE OUTSIDE

Since the whole point is to spend time outdoors, we've put many great features on the outside of the Jamboree and Jamboree GT.



PASS-THROUGH STORAGE holds fishing poles, water skis and other long items, and a bin to store ice for cold drinks (models 26Q and 29V).



THE EXTERIOR SHOWER can rinse the mud off waders and frog-catching kids. (Standard on Jamboree GT and Jamboree 31M & 31W, optional on other Jamboree models.)



TWO-WAY RADIOS (optional) let you hike, fish or socialize while keeping in contact. Includes 4 walkie-talkies and a charging station.



THE FUEL FILL is located in the back, so you can pull into any pump at the filling station and refuel (select models).

EXTERIOR FEATURES – JAMBOREE GT

EXTERIOR AWNING is standard on the GT and creates a ready-made “front porch” for you and Fido to relax in the shade.

ONE-PIECE FIBERGLASS FRONT CAP is aerodynamic and attractive.

BASEMENT STORAGE features aluminum doors with struts and large paddle latches so you can open them with one hand to access all your travel gear.

ALCOA® ALUMINUM WHEELS let you roll in style, and reduce the un-sprung weight for a superior ride.

HEATED HOLDING TANKS help prevent winter freezing, and are positioned in the bottom center platform for balance.



JAMBOREE GT shown in Satin Steel.

WHY FLEETWOOD?



Passion

We're truly passionate about the RV lifestyle. Fleetwood was founded by RV enthusiasts, and that tradition continues today.



Quality

There's no cutting corners. Skilled craftsmen build every Fleetwood RV for maximum durability and longevity.



Service

Help is nearby. When you need an upgrade or repair, you'll find facilities all across North America and more than 1,100 dealers ready to assist you.



Warranty

Breathe easier with RV Ownercare, one of the best warranties in the industry. See your Fleetwood dealer for details.



Trust

More people trust Fleetwood. After all, we've spent over 50 years perfecting RVs, earning the loyalty of generations of RVers.

BUILT BETTER FROM THE INSIDE OUT



- 1) **FLEETWOOD'S TUFF-PLY ROOFING TECHNOLOGY** is one of the most durable roofing materials on the market and also resists radiation by reflecting sunlight to reduce chalking. White roof material minimizes heat build-up, keeping the temperature cool and comfortable.
- 2) **RELIABLE TuffPEX® PLUMBING** runs throughout each vehicle creating a durable seal on all internal tubing. TuffPEX® tubing is easy to install, tough, will not crack if frozen, flexible and corrosion resistant. The TuffPEX® system is an industry leader in quality plumbing.
- 3) **Tuff-Coat® FIBERGLASS COMPOSITE.** Fleetwood uses one seamless solid piece of exclusive Tuff-Coat® fiberglass composite for each outer wall. It resists UV rays, cracks and impacts.
- 4) **VACU-BOND® SIDEWALLS, FLOORS AND CEILINGS** ensure a strong, weather-resistant structure, framed in aluminum or steel. The Vacu-bond® process is unmatched by many competitors.
- 5) **HIGH DENSITY BLOCK FOAM INSULATION** is precisely cut to fit between framing members. This insures maximum insulation throughout the vehicle.

Drawings are for illustrative purpose only to highlight aspects of motor home construction. Actual motor home design depends on model and is subject to change. Setting the Standard in Motor Home Quality.

JAMBOREE GRAPHICS AND DECOR

We've revamped our exterior graphics and interior fabrics to give you fresh, updated choices for 2007. Pick your favorite.

PEBBLE BEACH



LIVING ROOM



Sofa Bed & Dinette Cushions



Swivel Chair



Windsor Birch

BEDROOM



Bedspread



Throw Pillow

SAGE



LIVING ROOM



Sofa Bed & Dinette Cushions



Swivel Chair

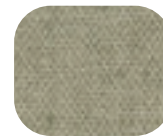


Windsor Birch

BEDROOM



Bedspread



Throw Pillow

LAKE



LIVING ROOM



Sofa Bed & Dinette Cushions

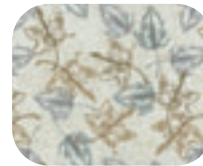


Swivel Chair



Windsor Birch

BEDROOM



Bedspread



Throw Pillow

JAMBOREE GT GRAPHICS AND DECOR

The deluxe fabrics and extra detailing make the 2007 Jamboree GT even more inviting. Select from our new palette of colors and designs.

BLUE TOPAZ



Sofa Bed & Dinette Cushions



Swivel Chair



Windsor Birch

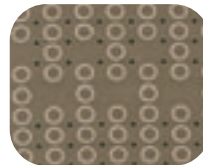


Bedspread



Throw Pillow

SATIN STEEL



Dinette Cushions & Throw Pillow



Sofa Bed



Windsor Birch



Bedspread



Throw Pillow

CAFE MILAN



Dinette Cushions & Swivel Chair



Sofa Bed



Windsor Birch



Bedspread



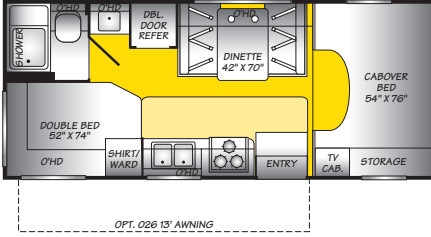
Throw Pillow



JAMBOREE GT

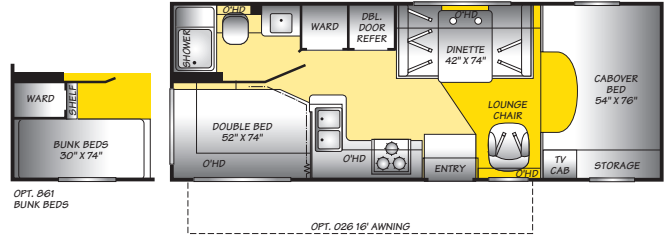
JAMBOREE FLOOR PLANS

22B



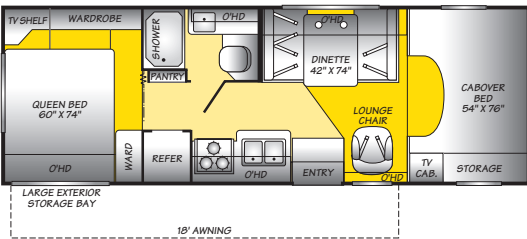
OPT. 026 13' AWNING
 Interior Storage Capacity: 48 cu. ft.
 Exterior Storage Capacity: 30 cu. ft.

24D



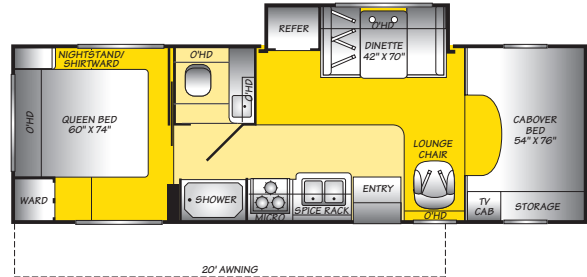
OPT. 026 16' AWNING
 Interior Storage Capacity: 69 cu. ft.
 Exterior Storage Capacity: 30 cu. ft.

26Q



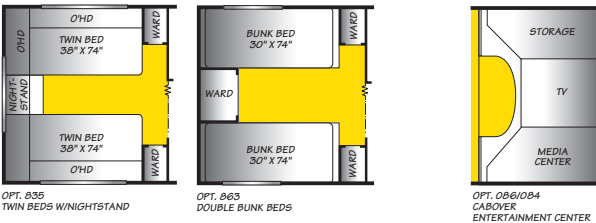
18' AWNING
 Interior Storage Capacity: 57 cu. ft.
 Exterior Storage Capacity: 104 cu. ft.

28F
 Single Slide-Out



20' AWNING
 Interior Storage Capacity: 71 cu. ft.
 Exterior Storage Capacity: 34 cu. ft.

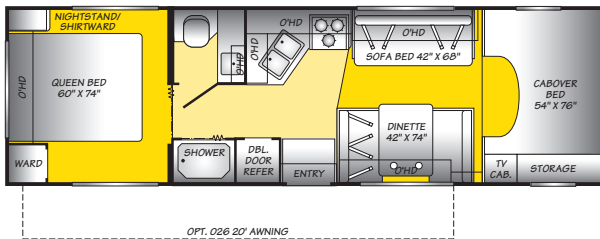
29V



OPT. 036 TWIN BEDS W/NIGHTSTAND

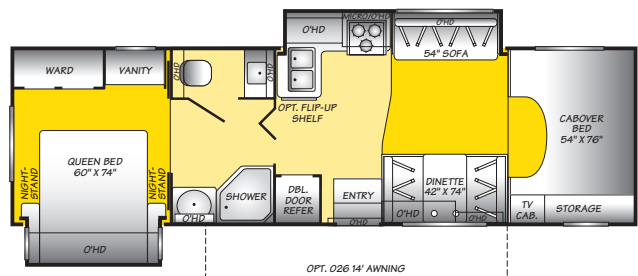
OPT. 063 DOUBLE BUNK BEDS

OPT. 086/084 CABOVER ENTERTAINMENT CENTER



OPT. 026 20' AWNING
 Interior Storage Capacity: 85 cu. ft.
 Exterior Storage Capacity: 66 cu. ft.

31K
 Double Slide-Out



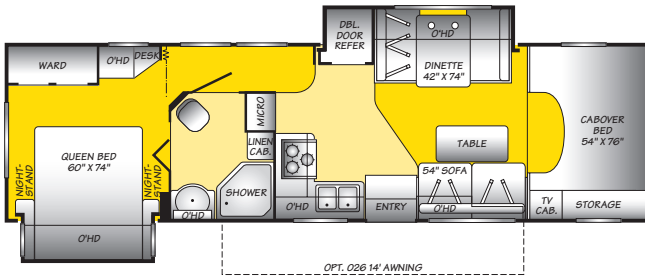
OPT. 026 14' AWNING
 Interior Storage Capacity: 99 cu. ft.
 Exterior Storage Capacity: 57 cu. ft.



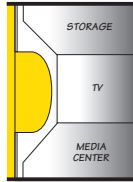
JAMBOREE

Seat belt configuration may vary depending on options chosen.

31M
Double Slide-Out

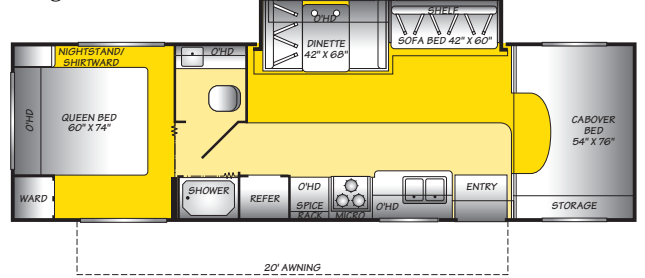


Interior Storage Capacity: 122 cu. ft.
Exterior Storage Capacity: 71 cu. ft.

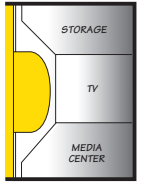


OPT. 086/084
CABOVER
ENTERTAINMENT CENTER

31W
Single Slide-Out



Interior Storage Capacity: 101 cu. ft.
Exterior Storage Capacity: 71 cu. ft.

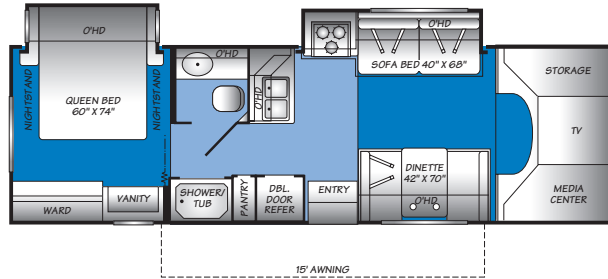


OPT. 084/086
CABOVER
ENTERTAINMENT CENTER

TV
O'Hd
OPTIONAL TV
OPT. 90

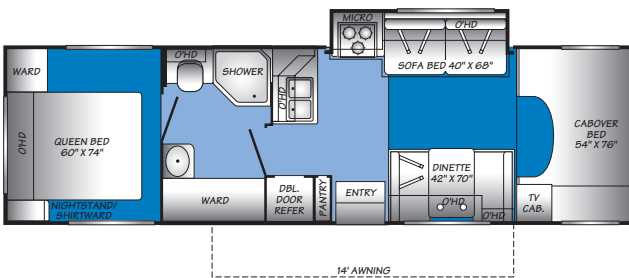
JAMBOREE GT FLOOR PLANS

30U
Double Slide-Out

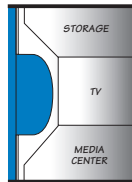


Interior Storage Capacity: 140 cu. ft.
Exterior Storage Capacity: 85 cu. ft.

31L
Single Slide-Out

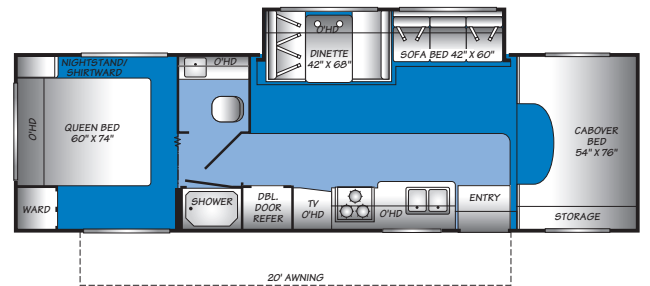


Interior Storage Capacity: 129 cu. ft.
Exterior Storage Capacity: 42 cu. ft.

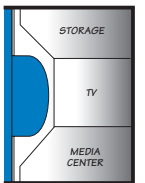


OPT. 351
CABOVER
ENTERTAINMENT CENTER

31W
Single Slide-Out



Interior Storage Capacity: 101 cu. ft.
Exterior Storage Capacity: 61 cu. ft.



OPT. 351
CABOVER
ENTERTAINMENT CENTER

O'Hd
STORAGE
W/ OPT. 351

Weights and Measurements

2007 Jamboree and Jamboree GT

JAMBOREE						
MODELS	22B	24D	26Q	28F	29V	31K
Chassis	Chevy® Express	Ford® E350/ Chevy Express/Ford® E450	Ford® E450/ Chevy Workhorse™	Ford® E450/ Chevy Workhorse™	Ford® E450/ Chevy Workhorse™	Ford® E450/ Chevy Workhorse™
Engine Displacement (Liters)	6.0	6.8/6.0/6.8	6.8/6.0	6.8/6.0	6.8/6.0	6.8/6.0
Wheelbase (Inches)	139"	158"/159"/158"	176"/177"	188"/189"	198"/199"	214"/215"
GVWR (lbs) ¹	12,300	11,500/12,300/14,050	14,050/14,050	14,050/14,050	14,050/14,050	14,050/14,050
Front GAWR (lbs) ²	4,300	4,600/4,300/4,600	4,600/4,600	4,600/4,600	4,600/4,600	4,600/4,600
Rear GAWR (lbs) ²	8,600	7,800/8,600/9,450	9,450/9,450	9,450/9,450	9,450/9,450	9,450/9,450
Base Weight (lbs) ³	9,300	9,890/9,677/9,990	10,702* /10,550*	11,080/10,915	10,850/10,700	12,350/12,200
GCWR (lbs) ⁴	15,800	15,000/15,800/19,050	19,050/17,550	19,050/17,550	19,050/17,550	17,550/17,550
Hitch Rating Weight (lbs) [†]	3,500	3,500/3,500/5,000	5,000/3,500	5,000/3,500	5,000/3,500	3,500/3,500
Tongue Weight (lbs) [†]	350	350/350/500	500/350	500/350	500/350	350/350

JAMBOREE			JAMBOREE GT			
MODELS	31M	31W	MODELS	30U	31L	31W
Chassis	Ford® E450/ Chevy Workhorse™	Ford® E450/ Chevy Workhorse™	Chassis	Ford® E450	Ford® E450	Ford® E450
Engine Displacement (Liters)	6.8/6.0	6.8/6.0	Engine Displacement (Liters)	6.8	6.8	6.8
Wheelbase (Inches)	218"/219"	198"/199"	Wheelbase (Inches)	206"	218"	214"
GVWR (lbs) ¹	14,050/14,050	14,050/14,050	GVWR (lbs) ¹	14,050	14,050	14,050
Front GAWR (lbs) ²	4,600/4,600	4,600/4,600	Front GAWR (lbs) ²	4,600	4,600	4,600
Rear GAWR (lbs) ²	9,450/9,450	9,450/9,450	Rear GAWR (lbs) ²	9,450	9,450	9,450
Base Weight (lbs) ³	11,860/11,710	12,000/11,850	Base Weight (lbs) ³	12,250*	12,000*	12,000*
GCWR (lbs) ⁴	17,0550/17,550	17,550/17,550	GCWR (lbs) ⁴	17,550	17,550	17,550
Hitch Rating Weight (lbs) [†]	3,500/3,500	3,500/3,500	Hitch Rating Weight (lbs) [†]	3,500	3,500	3,500
Tongue Weight (lbs) [†]	350/350	350/350	Tongue Weight (lbs) [†]	350	350	350

DIMENSIONS & CAPACITIES							JAMBOREE			JAMBOREE GT		
MODELS	22B	24D	26Q	28F	29V	31K	31M	31W	30U	31L	31W	
Overall Length ⁵	23'2"	25'1"/26'0"/25'1"	27'1"/28'0"	28'10"/29'9"	30'1"/31'0"	31'4"/32'3"	32'2"/33'1"	31'4"/32'3"	30'6"	32'2"	31'4"	
Overall Height (with A/C)	10'9"	10'9"	10'9"	10'9"	10'9"	11'4"	11'4"	11'4"	11'4"	11'4"	11'4"	
Overall Width (maximum) ^{6,7}	102"	102"	102"	102"	102"	102"	102"	102"	102"	102"	102"	
Interior Height (maximum)	79"	79"	79"	79"	79"	79"	79"	79"	79"	79"	79"	
Interior Width (maximum)	96"	96"	96"	96"	96"	96"	96"	96"	96"	96"	96"	
Fuel Tank Capacity	35	55/55/55	55/55	55/55	55/55	55/55	55/55	55/55	55	55	55	
Fresh Water Holding Tank (gal)	30	30	30	30	30	30	35	35	30	30	35	
Grey Water Holding Tank (gal)	36	36	32	37	37	44	37	35	35	35	35	
Black Water Holding Tank (gal)	35	35	38	37	37	30	37	35	35	40	35	
Water Heater Tank (gal)	6	6	6	6	6	6	6	6	6	6	6	
Appliance Propane Tank (gal) (WC) ⁸	14	14	14	14	14	14	14	14	14	14	14	

CHASSIS		
MODELS	FORD® E350/FORD® E450	CHEVY® EXPRESS/CHEVY® WORKHORSE™
Alternator Amps:	130 Amp	145 Amp
Engine:	E6.8L Triton® V10	6.0L Vortec™ V8
Horsepower:	305 HP	300 HP
Transmission:	5-Speed Automatic w/Overdrive 5R110W	4-Speed Automatic w/Overdrive 4L80E
Torque:	420 lb-ft @ 3250 RPM	360 lb-ft @ 3200 RPM

- GVWR (Gross Vehicle Weight Rating) is the maximum permissible weight of this fully loaded motor home. The GVWR is equal to or greater than the sum of the (UVW unloaded vehicle weight plus the (CCC) cargo carrying capacity.
- GAWR (Gross Axle Weight Rating) is the maximum permissible loaded weight a specific axle is designed to carry.
- Base Weight is the estimated weight of the motor home without fuel, options, water, cargo or passengers.
- GCWR (Gross Combined Weight Rating) is the value specified by the motor home manufacturer as the maximum allowable loaded weight of this motor home with its towed vehicle. Towing and braking capacities may be different. Refer to Fleetwood and chassis manufacturer's manuals for complete information.
- Length taken from front bumper to rear bumper (excludes accessories).
- Excludes safety equipment and awnings.
- Motor homes feature a body-width over 96" which will restrict your access to certain roads. Before purchasing, you should research any state and/or province road laws which may affect your usage.
- Tank manufacturer's listed water capacity (WC). Actual propane capacity is 80% of water listing as required by the safety code.

† The chassis manufacturer recommends the installation of a supplemental brake control system to activate the brakes on the vehicle or trailer you are towing. Hitch receiver ratings expressed are maximum for the hitch receiver installed and may require the purchase of additional equipment that is dependent on the weight of the towed load. Consult with hitch receiver manufacturer for further information.

* = Estimated Weights

UVW and CCC are found on the cargo carrying capacity label in each RV.

IMPORTANT— PLEASE READ: Product information, photography and illustrations included in this publication were as accurate as possible at the time of printing. For further product information and changes, please visit our website at www.fleetwoodrv.com or contact your local Fleetwood dealer. Prices, materials, design and specifications are subject to change without notice. All weights, fuel, liquid capacities and dimensions are approximate. Fleetwood has designed its recreational vehicles to provide a variety of uses for its customers. Each vehicle features optimal seating, sleeping, storage and fluid capacities. The user is responsible for selecting the proper combination of loads (i.e. occupants, equipment, fluids, cargo, etc.) to ensure that the vehicle's capacities are not exceeded.



RV OWNERCARE*

Limited one-year/15,000-mile coach warranty and three-year/50,000-mile structural warranty, whichever occurs first, and it is fully transferable for the first 12 months. RV OWNERCARE is one of the RV industry's most comprehensive programs and includes systems, appliances, components and construction, with no deductible and no service charge. RV OWNERCARE coverage is provided from a company that will be around in the future to service your needs. See your nearest Fleetwood dealer for a full explanation of benefits and restrictions.

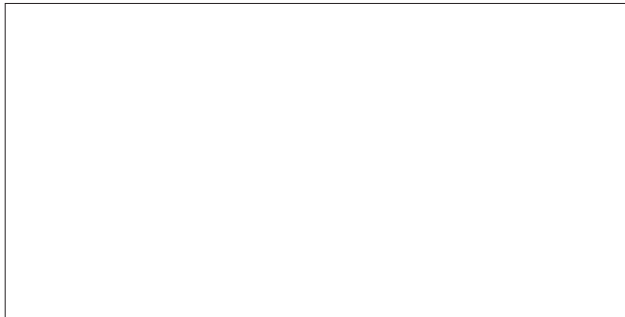
CONTACT US

To locate a dealer near you, visit our website at www.fleetwoodrv.com or call 1-800-444-4905. We can also be contacted at Fleetwood Customer Relations, P.O. Box 1007, Decatur, IN 46733.

FLEETWOOD TRAVELCADE CLUB

As a Fleetwood owner, you're eligible to become a member of the Fleetwood Travelcade Club. It's a perfect way to meet other Fleetwood owners who love to travel across America and share in the RV lifestyle. Call (877) 577-2560, or visit our website at www.fleetwoodrv.com/owners_clubs to learn more, and join the fun.

YOUR LOCAL FLEETWOOD DEALER IS:



*For complete info see your Fleetwood dealer.

©2006. Fleetwood Enterprises, Inc.
Printed in the USA. Inventory Control Number JA07B2, 11/06.
Model Year 2007, Second Edition.

IMPORTANT—PLEASE READ

Product information, photography and illustrations included in this publication were as accurate as possible at the time of printing. For further product information and changes, please visit our website at www.fleetwoodrv.com or contact your local Fleetwood dealer. Prices, materials, design and specifications are subject to change without notice. All weights, fuel, liquid capacities and dimensions are approximate. Fleetwood has designed its recreational vehicles to provide a variety of uses for customers. Each vehicle features optimal seating, sleeping, storage and fluid capacities. The user is responsible for selecting the proper combination of loads (i.e. occupants, equipment, fluids, cargo, etc.) to ensure that the vehicle's capacities are not exceeded.



tread lightly!
LEAVING A GOOD IMPRESSION

