



Pace Arrow®

FLEETWOOD® RV

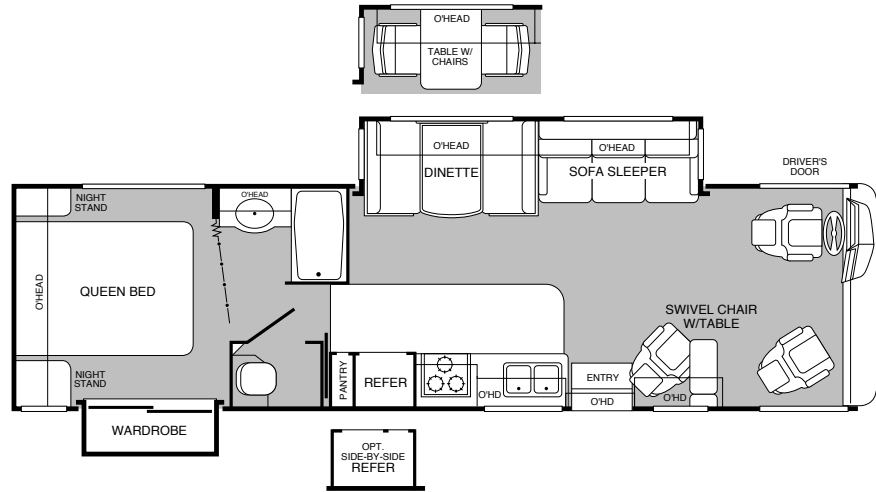
It's what legends are made of.

When was the last time you saw a legend? Well, feast your eyes on Pace Arrow and you'll get a taste of what traveling in legendary comfort and style is like, from the Fleetwood motor home that started it all. From its modern Euro bus design to every facet of its vastly upgraded interiors and features, Pace Arrow was built for the experienced traveler. It comes fully equipped with all the state-of-the-art appeal and convenience required for short getaways or long-term vacations, without missing a hint of the finer things along the way. Pace Arrow also hits the mark in long-lasting value with present-day affordability, offering first-class coach quality and an amazing list of features for a motor home in this price range. Pace Arrow was the very first Fleetwood motor home and is easily one of the most recognizable brands on the market—and on the road—today. So, come on, board the legendary Pace Arrow. Legends like this don't come along every day.

2000 Pace Arrow Floor Plans

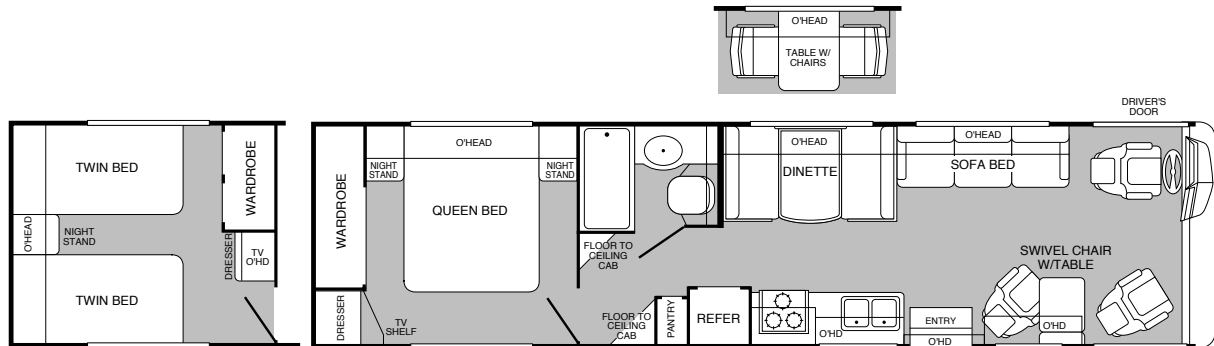
NEW FOR
2000

MODEL
33V



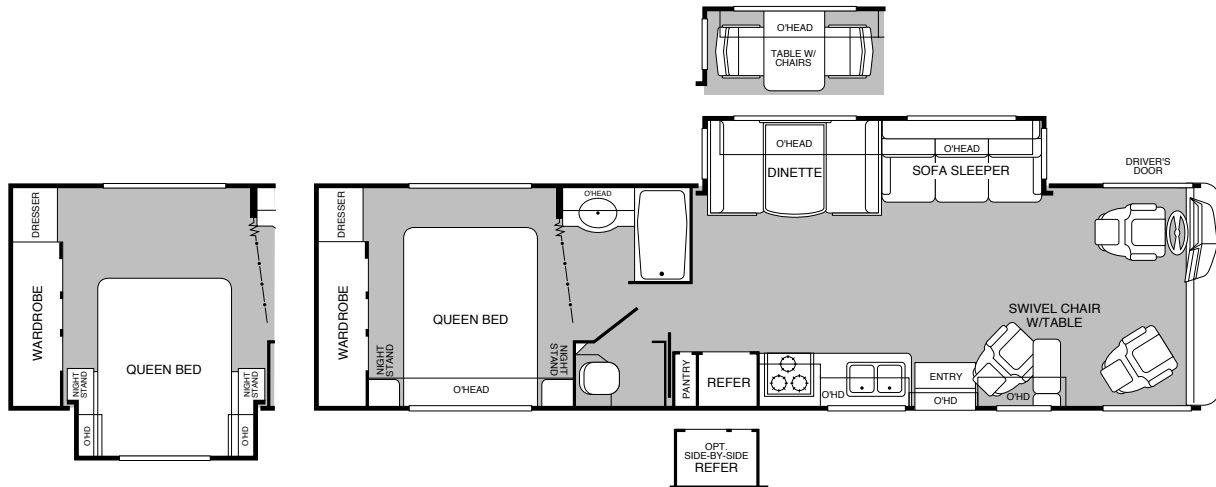
- Living Room Slide-Out
- Dinette or Optional Table with Chairs
- Swivel Chair with Table
- Optional Dometic® Side-by-Side Refrigerator
- Queen Bed
- Private Toilet
- Wardrobe Slide-Out

MODEL
35J

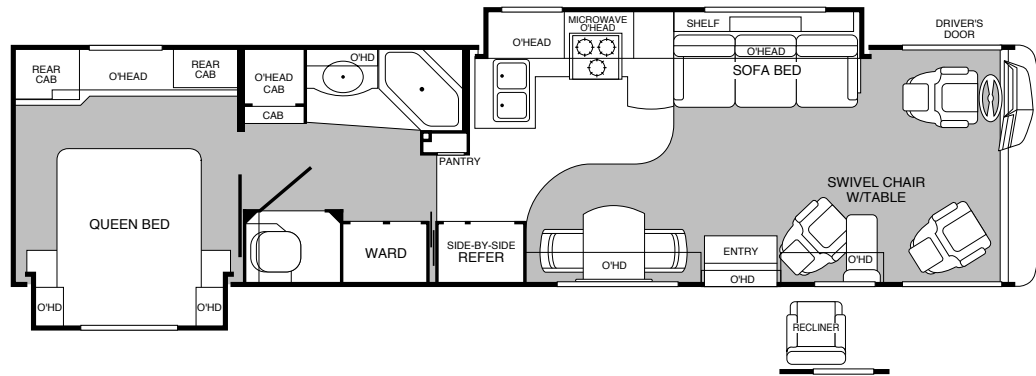


- Dinette or Optional Table with Chairs
- Swivel Chair with Table
- Fully Enclosed Bathroom
- Bedroom Wardrobe with Dresser
- Optional Twin Beds

MODEL
35N



- Living Room Slide-Out
- Dinette or Optional Table with Chairs
- Swivel Chair with Table
- Optional Dometic® Side-by-Side Refrigerator
- Extra Large Wardrobe
- Private Toilet
- Optional Bedroom Slide-Out



NEW FOR
2000

MODEL 37K

- Living Room/Galley Slide-Out
- Table with Chairs
- Swivel Chair with Table or Optional Recliner
- Dometic® Side-By-Side Refrigerator
- Bedroom Slide-Out
- Private Toilet



MODEL 37S

- Living Room Slide-Out
- Dinette or Optional Table with Chairs
- Swivel Chair with Table
- Optional Dometic® Side-By-Side Refrigerator
- Optional Washer/Dryer
- Private Toilet
- 3 Bedroom Configurations

2000 Pace Arrow Standard Features

EXTERIOR AUTOMOTIVE

Large Curved Aerodynamic Windshield
Undercoating
Stainless-Steel Wheel Simulators
Underhood Utility Light
Steel Surface on Bulkhead
Trailer Hitch with 4-Point Electrical Hook-Up
Large Single Headlamps with Turn Signal
Driving Lights
Rear Camera Ready
Single Motor Windshield Wipers with Wet Arm

INTERIOR AUTOMOTIVE

Intermittent Wiper Control
Double Swivel Sun Visors with Map Pockets
Driver/Passenger Side Window Shade
Engine Cover Convenience Tray
Cruise Control
Low Profile Engine Cover
Radio with Cassette AM/FM/MX Electronic Tuning
Soft Surface Automotive Dash
Computer Workstation in Dash
Driver/Passenger Side Panels with Magazine Rack
Tilt Steering Wheel
Tilt-Up Instrument Panel
Battery Disconnect System
Auto A/C Heater Combo
Radio Switch—Main/Auxiliary
Driver/Passenger Captain's Chairs
with Reclining Back/Slide Controls
3-Point Seat Belts On Driver/Passenger Seats

EXTERIOR

Full Fiberglass Front/Rear Cap
One-Piece, Swing-Down Engine Access Door
Fiberglass Front Quarter Panels
Fiberglass Rear Wheel Well Trim
Aerodynamic Bus Styling
Radius Door Entry with Deadbolt Latch
Slider Windows Throughout—Dual Pane
Fiberglass Front Grille
Pace Arrow Logo Badging
Utility Compartment with Exterior Shower
4-Point Manual Hydraulic Levelers—Ford
Roof Ladder
Exterior Assist Handle
Heated Remote Rear View Mirror
20' Sewer Hose
Park Cable Receptacle
Awning Rail/Drip Molding (Both Sides)
Power Entry Step
Dual Battery Charge Control
Under-Floor Spare Tire
Porch Light
3 Colorway Graphics to Match Decor
Lower Body Accent Paint

PLATFORM CONSTRUCTION

Basement Floor Configuration
Heated Water & Holding Tank Compartments
Polyethylene Luggage Compartment Boxes
Steel Truss System
Steel Outriggers

BODY STRUCTURE

Vacubond Upper/Lower Floor
Vacubond Walls with Smooth Exterior Fiberglass
Radiused Roof with Ducted A/C—Flat Ceiling
Rubber Roof
Steel Floor/Wall/Ceiling Framing
Power Platform II

INTERIOR

3 Interior Decors
Velvet Feature Fabrics
Skylight in Tub/Shower
Oak Wood Grain
Wall-to-Wall Nylon Carpet with Carpet Pad
Vinyl Floor Covering—Galley & Bath
Wood Drawers
Roller Guide Drawer Slides with Transit Ship Locks
Radius Corner Cabinetry
Brass Finished Cabinet Hardware
Driver/Passenger Reclining Bucket Seats
Bedspring with Decor Pillows
Innerspring Mattress
Oak Cabinet Doors & Drawers
Crown Molding in Bedroom
Headboard
Beveled Mirrors
Slide-Out Dinette Bins with Locks
Color-Coordinated Window Coverings
Oak Bath Door Trims
Wood Trim Countertops in Galley
Wood Trim Table Tops
Trash Basket in Galley
Molded Fiberglass Tub/Shower with One-Piece Enclosure
Bright Brass Bath Accessories
Residential Seat Styling
Entry Rail (Oak & Brass)
Oak Raised Panel Cabinet Doors
Adjustable Cabinet Shelves (Selected Cabinets)
Sink Cutting Board
Solid Divider Doors
Large, Double Stainless-Steel Sink
CSA—Sofa Lock

INTERIOR LIGHTING

Wardrobe Lighting
Fluorescent Ceiling with Dual Bulb
Decor Lighting
Incandescent Lighting
Make-Up Lights in Bath

APPLIANCES

20" Panasonic® TV In Front Overhead
Smoke Detector
LP Detector
CO Detector
6-Gallon, Quick-Recovery Water Heater with D.S.I.
22" 3-Burner, High-Output Cook Top with Oven
Light/Power Range Hood
Folding Range Cover
High Efficiency Single A/C with Solar Panel
Water Heater Bypass
Porcelain Toilet with Water Saver
Toilet Tank "Sani-flush" System
1-cu.ft. Microwave
8-cu.ft. Dometic® Double Door Refrigerator
Single Lever Galley Faucet
Water Filter with Faucet
Demand Water Pump with Filter
Power Bath Vent
Fantastic® Power Roof Vent in Galley
Fire Extinguisher
Telephone Jack
Rear Speakers in Bedroom
A/C Ready
Monitor Panel

ELECTRICAL

Patio Receptacle
120V/12V AC/DC Converter Central Electrical Panel
120V/12V Wire Raceway
3-Way Water Pump Switch
30-amp Service
Wall Switches
Dual 6V/Deep Cycle 218-amp House Batteries
VCR Ready

EXTERIOR STORAGE

Insulated Luggage Doors—Fiberglass w/Aluminum Frame
Single-Paddle/Metal Latches
Continuous One-Piece Bulb Seal
Hidden, Stainless Steel Latch Rods—One Per Door
Lighted Compartments
Carpeted Luggage Compartment/Fiberglass in
EZ Store Pass-Through Storage
Steel Seal Frames

Product information and photography included in this brochure were as accurate as possible at the time of publication. For the most current product information and changes, please visit our Website at www.fleetwood.com or contact your local Fleetwood dealer. Subsequent refinements may be evident in the actual product. Prices and specifications are subject to change without notice. All fuel and liquid capacities are approximate and dimensions are nominal. Fleetwood has designed its motor home brands to provide a variety of potential uses for its customers. Each unit features the optimum storage, fluid, seating and sleeping capabilities. Though the customer enjoys this potential, he/she also has the responsibility to select the proper combinations of loads without exceeding the chassis weight capacities.

New Pace Arrow Features For 2000

Our engineering may set us apart from the rest. But the things you'll notice most, when you and your family take a trip, are the top-of-the-line features. This year we have, once again, added to an already large list of features with the following:

- **Fiberglass Rear Cap**
- **Water Spouts at Drip Rail**
- **Toilet Tank "Sani-flush" System**
- **Plank Wood Flooring Option in Galley**
- **High Line Utility Compartment**
- **Leather Driver and Passenger Seat Option with Power Driver**
- **Porcelain Toilet**
- **Bonded Windshield Technology**
- **CB Radio Ready with Antenna Option**

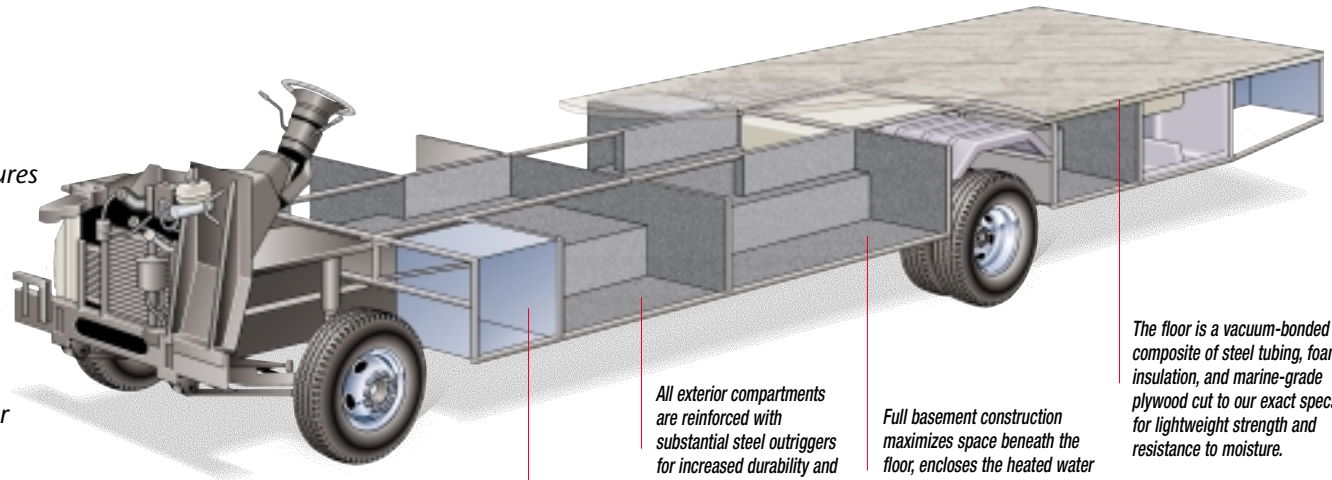
2000 Pace Arrow Options



EXTERIOR AUTOMOTIVE	33V	35J	35N	37K	37S
Workhorse Chassis 7.4L Vortec Engine	N/A	Opt	N/A	N/A	Opt
Ford Chassis 6.8L Engine	Opt	Opt	Opt	Opt	Opt
EXTERIOR	33V	35J	35N	37K	37S
Awning - USA	Opt	Opt	Opt	Opt	Opt
4-Point Manual Hydraulic Levelers—Chevy Workhorse	N/A	N/A	Opt	N/A	N/A
4-Point Manual Hydraulic Levelers—Ford	Std	Std	Opt	Std	Std
ELECTRICAL	33V	35J	35N	37K	37S
4.0kW Generator—Onan® Microlite	Opt	Opt	Opt	Opt	Opt
5.5kW Generator—Onan® Dual A/C Ready	Opt	Opt	Opt	Opt	Opt
7.0kW Generator—Onan® Dual A/C Ready	Opt	Opt	Opt	Opt	Opt
CSA Package—Workhorse	N/A	Opt	N/A	N/A	Opt
CSA Package—Ford	Opt	Opt	Opt	Opt	Opt
APPLIANCES	33V	35J	35N	37K	37S
Convection Microwave	Opt	Opt	Opt	Opt	Opt
Furnace 20M BTU/34M BTU (Dual)	N/A	N/A	N/A	Std	Std
hydroflame® Furnace 34M BTU	Std	Std	Std	N/A	N/A
Electronic Climate Control w/ Dual A/C and Solar Battery Charger	Opt	Opt	Opt	Opt	Opt
Compact Disc Player	Opt	Opt	Opt	Opt	Opt
Rear Panasonic® Television with Remote	Opt	Opt	Opt	Opt	Opt
VCR/VHS	Opt	Opt	Opt	Opt	Opt
Washer/Dryer	N/A	N/A	N/A	Opt	Opt
Domestic® Side-by-Side Refrigerator with Ice Maker	Opt	N/A	Opt	Opt	Opt
CSA Convection Microwave	Opt	Opt	Opt	Opt	Opt
DSS Manual Lift/Satellite Dish	Opt	Opt	Opt	Opt	Opt
Dual Roof High Efficiency A/C with Solar Panel	Opt	Opt	Opt	Opt	Opt
SLEEPING ACCOMMODATIONS (STANDARD)	33V	35J	35N	37K	37S
Sofa Bed	N/A	46" x 76"	N/A	46" x 76"	46" x 76"
Sofa Sleeper	51 1/2" x 71 1/2"	N/A	51 1/2" x 71 1/2"	N/A	Opt
Dinette	42" x 74"	42" x 74"	42" x 74"	N/A	42" x 74"
Queen Bed	60" x 80"	60" x 80"	60" x 80"	60" x 80"	60" x 80"
SLEEPING ACCOMMODATIONS (OPTIONAL)	33V	35J	35N	37K	37S
Twin Beds with Nightstands	N/A	39" x 75"	N/A	N/A	39" x 75"
Sofa Bed	N/A	Std	N/A	Std	Std
Sofa Sleeper	Std	N/A	Std	N/A	51 1/2" x 71 1/2"
Island Bed with Full Wardrobe	N/A	Std	N/A	N/A	Opt
SLIDE-OUT	33V	35J	35N	37K	37S
Living Room—Dinette/Sofa	Std	N/A	Std	N/A	Std
Bedroom Wardrobe—Closet/Organizer	Std	N/A	N/A	N/A	N/A
Free-Standing Dinette & Chairs	Opt	N/A	Opt	N/A	Opt
Galley/Sofa	N/A	N/A	N/A	Std	N/A
Bedroom	N/A	N/A	Opt	Std	N/A
INTERIOR	33V	35J	35N	37K	37S
Glass Shower Door with Bright Brass Frame	Std	N/A	Std	Std	Std
Rear TV with Island Queen Bed	N/A	Opt	N/A	N/A	Opt
Shower Curtain	N/A	Std	N/A	N/A	N/A
CSA-Sofa Lock	Std	Std	Std	Std	Std
Lounge Recliner	Opt	Opt	Opt	Opt	Opt
Coffee Table	Opt	N/A	Opt	Opt	Opt
Plank Wood Flooring in Galley	Opt	Opt	Opt	Opt	Opt
Dinette Table with Chairs	Opt	Opt	Opt	Std	Opt
INTERIOR AUTOMOTIVE	33V	35J	35N	37K	37S
Stereo AM/FM with CD Player	Opt	Opt	Opt	Opt	Opt
Dash Fans	Opt	Opt	Opt	Opt	Opt
CB Radio Ready	Opt	Opt	Opt	Opt	Opt
Leather Driver/Passenger Seats	Opt	Opt	Opt	Opt	Opt

The Power Platform II Makes The Difference

Pace Arrow's quality begins long before the features come on board. We begin by building on our exclusive Power Platform II, a unique truss design welded together using tubular steel that's durable, strong, and dependable. The result is a quiet and nearly flawless ride, increased floor strength, and substantially more storage space below. An all-steel foundation further reduces stress loads on the sidewalls and minimizes chassis flex on uneven roads.



Drawing is for illustrative purpose only to highlight aspects of motor home construction. Actual motor home design depends on model and is subject to change.

All exterior compartments are reinforced with substantial steel outriggers for increased durability and years of cargo carrying.

Easy access compartments let you get to your Pace Arrow's batteries and dual-battery charge control.

Full basement construction maximizes space beneath the floor, encloses the heated water tanks, and provides easy-to-reach, pass-through storage.

The floor is a vacuum-bonded composite of steel tubing, foam insulation, and marine-grade plywood cut to our exact specs for lightweight strength and resistance to moisture.

2000 Pace Arrow Specifications

	NEW FOR 2000		NEW FOR 2000		
FORD CHASSIS	33V	35J	35N	37K	37S
Engine CID	415	415	415	415	415
Wheel Base	208"	208"/247"	208"	228"	228"
GVWR lbs/kgs (1)	20,500/9,299	20,500/9,299	20,500/9,299	20,500/9,299	20,500/9,299
Front GAWR lbs/kgs (2)	7,000/3,175	7,000/3,175	7,000/3,175	7,000/3,175	7,000/3,175
Rear GAWR lbs/kgs (2)	13,500/6,123	14,500/6,577	13,500/6,123	13,500/6,123	13,500/6,123
Base Weight lbs/kgs (3)	15,573/7,064	16,030/7,271	15,700/7,121	16,530/7,497	16,030/7,271
GCWR lbs/kgs (4)	25,500/11,567	25,500/11,567	25,500/11,567	25,500/11,567	25,500/11,567
Hitch Rating/Tongue Weight lbs	5,000/500	5,000/500	5,000/500	5,000/500	5,000/500
Hitch Rating/Tongue Weight kgs	2,268/227	2,268/227	2,268/227	2,268/227	2,268/227
Fuel Capacity gal/lbs	75/450	75/450	75/450	75/450	75/450
Fuel Capacity gal/kgs	75/204	75/204	75/204	75/204	75/204

WORKHORSE CHASSIS	33V	35J	35N	37K	37S
Engine CID	N/A	454	N/A	N/A	454
Wheel Base	N/A	208"/247"	N/A	N/A	208"/247"
GVWR lbs/kgs (1)	N/A	20,000/9,072	N/A	N/A	20,000/9,072
Front GAWR lbs/kgs (2)	N/A	5,500/2,495	N/A	N/A	5,500/2,495
Rear GAWR lbs/kgs (2)	N/A	14,500/6,577	N/A	N/A	14,500/6,577
Base Weight lbs/kgs (3)	N/A	16,030/7,271	N/A	N/A	16,030/7,271
GCWR lbs/kgs (4)	N/A	21,000/9,525	N/A	N/A	21,000/9,525
Hitch Rating/Tongue Weight lbs	N/A	3,500/350	N/A	N/A	3,500/350
Hitch Rating/Tongue Weight kgs	N/A	1,587/159	N/A	N/A	1,587/159
Fuel Capacity gal/lbs	N/A	75/450	N/A	N/A	75/450
Fuel Capacity gal/kgs	N/A	75/204	N/A	N/A	75/204

	NEW FOR 2000		NEW FOR 2000		
DIMENSIONS	33V	35J	35N	37K	37S
Overall Length	33' 8"	35' 8"	35' 2"	37' 8"	37' 8"
Overall Height with A/C	11' 9"	11' 9"	11' 9"	11' 9"	11' 9"
Overall Width (maximum)	102"	102"	102"	102"	102"
Interior Height (maximum)	79"	79"	79"	79"	79"
Interior Width (maximum)	96"	96"	96"	96"	96"

STORAGE CAPACITY (CU.FT.)	33V	35J	35N	37K	37S
Exterior (Ford/Workhorse) Est.	79/N/A	113/107	94/N/A	94/N/A	84/79

LIQUID CAPACITIES (GALLONS/LITERS)	33V	35J	35N	37K	37S
Fresh Water	100/378	100/378	100/378	100/378	100/378
Water Heater	6/23	6/23	6/23	6/23	6/23
Body-Waste Holding	50/189	50/189	50/189	50/189	50/189
Grey-Water Holding	50/189	50/189	50/189	50/189	50/189
Appliance LPG Tank (wc/see note)	25/95	25/95	25/95	25/95	25/95

Note: Tank manufacturer's listed water capacity (wc). Actual filled LP capacity is 80% of listing due to safety shutoff required on tank.

1. GVWR (Gross Vehicle Weight Rating): Means the maximum permissible weight of this motor home. The GVWR is equal to or greater than the sum of the unloaded vehicle weight plus the net carrying capacity.
2. GAWR (Gross Axle Weight Rating): Means the maximum permissible loaded weight a specific axle is designed to carry.
3. Base Weight: Means the weight of the motor home without fuel, options, water, cargo, or passengers.
4. GCWR (Gross Combination Weight Rating): Means the value specified by the motor home manufacturer as the maximum allowable loaded weight of this motor home with its towed trailer or towed vehicle. Towing and braking capacities may differ. Refer to Fleetwood and chassis manufacturer manuals for complete information.

FLEETWOOD RV

Fleetwood Enterprises, Inc.
RV Marketing
P.O. Box 7638
Riverside, CA 92513-7638



Face Arrow
FLEETWOOD RV

Your local Fleetwood RV dealer is:

TO FIND A FLEETWOOD DEALER near you, call 24 hours a day at 1-800-444-4905 or visit our Website at www.fleetwood.com

FOR CUSTOMER ASSISTANCE, call toll free 24 hours a day at 1-800-322-8216, visit our Website, or you may write to Fleetwood Enterprises, Inc., P.O. Box 7638, Riverside, CA 92513-7638.

Product information and photography included in this brochure were as accurate as possible at the time of publication. For the most current product information and changes, please visit our Website at www.fleetwood.com or contact your local Fleetwood dealer. Subsequent refinements may be evident in the actual product. Prices and specifications are subject to change without notice. All fuel and liquid capacities are approximate and dimensions are nominal. Fleetwood has designed its motor home brands to provide a variety of potential uses for its customers. Each unit features the optimum storage, fluid, seating and sleeping capabilities. Though the customer enjoys this potential, he/she also has the responsibility to select the proper combinations of loads without exceeding the chassis weight capacities.

© 1999 Fleetwood Enterprises, Inc.

Inventory Control Number 250002/2nd Edition 12/99



This award certifies that Fleetwood has met Ford's rigid quality standards for modifying a Ford chassis.