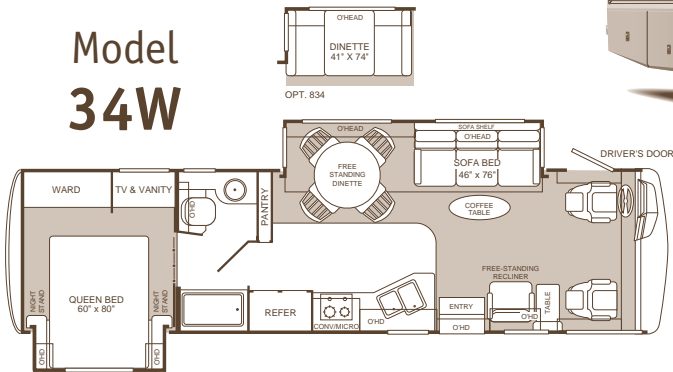


Pace Arrow®

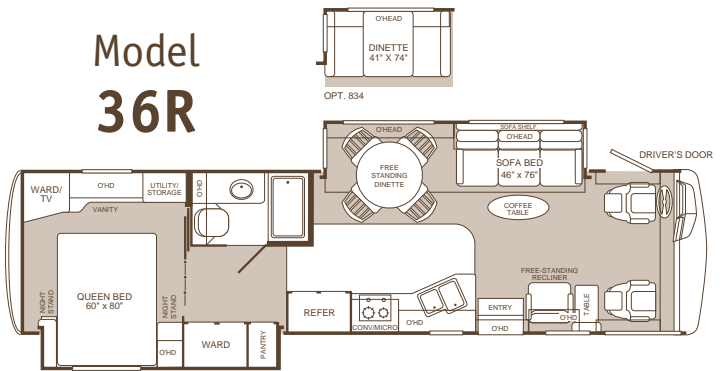
FLEETWOOD RV®



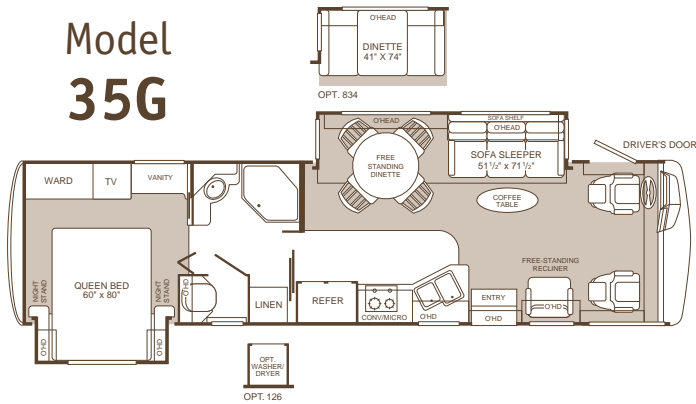
Model
34W



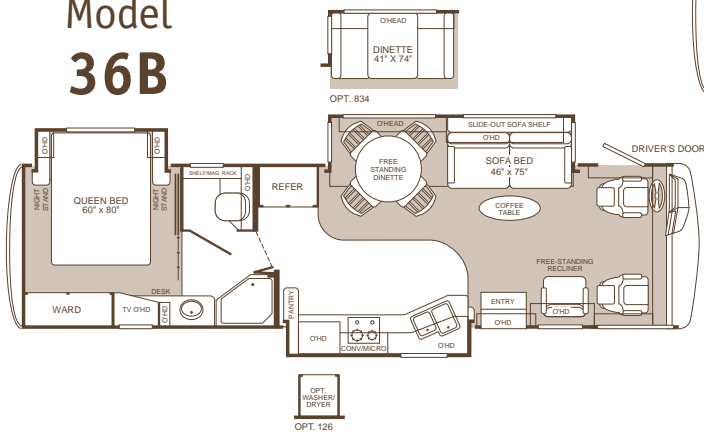
Model
36R



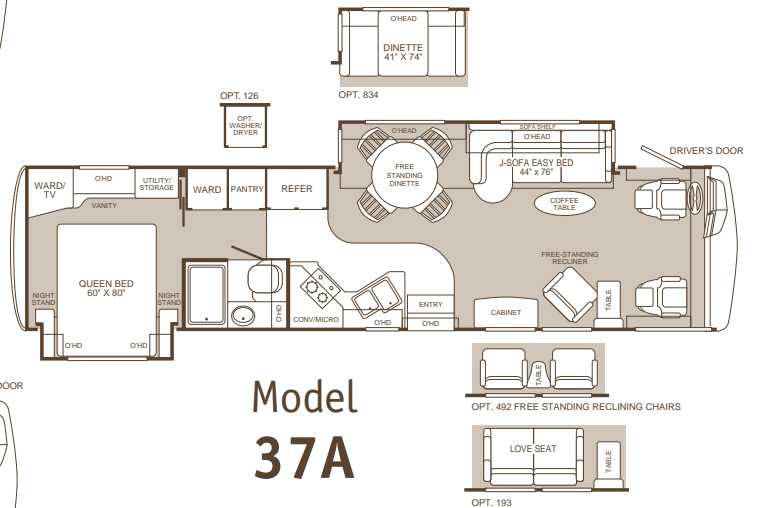
Model
35G



Model
36B



Model
37A



Standard and Optional Features

APPLIANCES

- Panasonic® 5-Disc DVD Home Theater Sound System
- Panasonic® 27" TV in Front Overhead
- Panasonic® 20" TV in Bedroom
- Hi-Fi VCR
- DSS Manual Lift Satellite Dish
- TV Antenna
- Panasonic® CD/Clock Radio in Bedroom
- 2-Burner Cooktop w/Sealed Burners
- GE® Convection Oven, Stainless, 1.4 cu. ft. Capacity w/Built-in Rangehood and Light
- 12 cu. ft. Stainless Steel Dometic® Refrigerator w/Ice Maker
- Dual Roof A/C High Efficiency w/Solar Panel and Front Chill Grille
- Coffeemaker, DustBuster® and Flashlight
- 10-Gallon, Quick-Recovery Water Heater w/D.S.I. (Gas/Electric)
- 2 Fan-Tastic® Power Roof Vents—Galley and Bath
- Telephone Jack in Dash, Dinette and Bedroom
- Sealand® All Porcelain Toilet w/Water Saver
- Single-Lever Galley Faucet w/Pull Out Spray
- Water Filter with Faucet in Galley
- Soap Dispenser in Galley
- Toilet Tank San-T-Flush™ System
- Water Heater Bypass System
- Detectors/Alarms for Smoke, LPG, and CO
- Fire Extinguisher

BODY STRUCTURE

- Power Platform Construction, Longitudinal I-Beams w/Steel Outriggers
- Vacu-bond® Walls w/Smooth, High-Gloss Exterior Fiberglass
- Vacu-bond® Upper/Lower Floors
- Aluminum Interlocking Floor/Wall/Ceiling Framing
- Royal Tuff-Ply™ Roof

ELECTRICAL

- 5.5kW Onan® Quiet Generator
- Centralized Monitor Panel w/Slide-Out Controls and Battery Disconnects
- 120V/12V AC/DC Converter Central Electrical Panel
- Dual 6V/Deep-Cycle 218-amp House Batteries
- 30-amp Service
- Dual Patio Receptacles
- 3-Way Water Pump Switch
- Wall Switches
- Automotive Wire Harnesses

EXTERIOR

- 4-Point Manual Hydraulic Leveler System
- Patio Awning
- Large, Heated Remote Rear View Mirrors
- Double Kwikkee® Power Entry Step w/Light
- 2 Graphic Colorways to Match Decor
- Fiberglass Front/Rear Caps
- Molded Front Rear Wheel Well Trims
- Flush Mounted Furnace and Water Heater
- Stainless Steel Mesh Front Grille
- Awning Rail/Drip Molding (Both Sides)
- Swing-Down Engine Access Door
- Entry Door with Deadbolt Latch

- Utility Compartment w/Exterior Shower
- "Ultimate®" Sewer Hose, 25' Coiled Water Hose
- Roof Ladder
- Exterior Illuminated Acrylic Assist Handle
- Dual Battery Charge Control
- Park Cable Receptacle
- Accessory LPG Supply with Hose**
- Porch Light

PLATFORM CONSTRUCTION

- Basement Floor Configuration
- Heated Water & Holding Tank Compartments
- Coach Vibration Isolators

EXTERIOR AUTOMOTIVE

- Large, Curved Aerodynamic Windshield
- Undercoating
- Stainless Steel Wheel Simulators
- Spare Tire (Ford Only)
- Mud Flaps
- Underhood Utility Light
- Steel Surface on Bulkhead
- 5,000 lb. Trailer Hitch w/7-Point Hook-Up
- Dual Halogen Headlights
- Wrap-Around Euro Design Taillights
- Rear Vision Camera with One-Way Audio
- Single Motor Windshield Wipers w/Wet Arm

EXTERIOR STORAGE

- Insulated Aluminum Skin Luggage Doors
- Molded Polyethylene Storage Compartments
- Single Paddle/Latches
- One-Piece Compartment Bulb Seal
- Gas Strut Door Supports
- Lighted Compartments
- Steel Sealed Frames

INTERIOR

- Flush Floor Living Room Slide-Out
- Ultraleather™ Furniture w/Throw Pillows
- Morbern® Vinyl Ceiling, Cushioned
- Fabrica Nylon Carpet with Pad
- Armstrong® Solarian® Vinyl Floor Covering
- Freestanding Reclining Chair w/Security Bracket
- Solid Surface Galley, Lavy and Countertops
- 3-Point Front Seat Belts
- Roller Guide Drawer Slides w/Transit Ship Locks
- Bedspread with Deluxe Fabric Headboard
- Restonic® Deluxe Pillow Top Innerspring Mattress
- Wardrobes w/Mirrored Doors, Cedar Lining, and Wire Shelf
- Dual Glazed Slider Windows with Day/Night Shades (Living Area)
- Dual Glazed Torque Windows with Pleated Shades (Bedroom Area)
- Entry Assist Rail (Brushed Chrome)
- Engine Cover Convenience Tray
- Wood Drawers
- Radius Corner Cabinetry
- Lounge Table, Coffee Table and Wine Cabinet (Combinations Vary By Model)
- Freestanding Dinette Table with Four Chairs
- Slide-Out Dinette Bins with Optional Fixed Dinette
- Solid Wood Lavy Door
- Solid Wood Dinette Table Tops

- Alder-Stained Drawer Fronts and Raised Panel Cabinet Doors, Arched Designs, Glass and Aluminum Inserts in Selected Locations
- Built-In Galley Cutting/Bread Board (Selected Models)
- Ironing Board (Conveniently Slides into Galley, Stores In Wardrobe on Selected Models)
- Solid Divider Doors
- Full and 3/4 Extension Accuride Drawer Slides in Galley
- Brushed Chrome Finish Cabinet Hardware
- Glass/Aluminum Galley Backsplashes, Rope Lighted
- Sliding Trash Receptacle Under Sink
- Large Double Stainless Steel Galley Sink
- Skylight in Tub/Shower
- Beveled Mirror in Lavy
- Molded Color Coordinated Acrylic Shower
- Nickel Finish Bath Accessories
- Nickel Finish Metal Designer Lavy Faucet
- Single Level Shower Control, Nickel Finish, w/Slide Adjustable Shower Head and Soap Dish
- Shower Dispenser for Lotion, Shampoo, Soap, Etc.
- 2 Striking Interior Theme Decors

INTERIOR AUTOMOTIVE

- Dual Chrome Electric Horns
- Digital Compass and Outside Temperature Gauge
- Denso® Intermittent Wiper Controls
- ICC Switch
- Double-Swivel Sun Visors with Map Pockets
- Driver's Door with Operable Window Lift
- Cruise Control
- Low Profile Engine Cover
- Visteon® Double DIN Radio with CD AM/FM/MX—Electronic Tuning
- Tilt Steering Wheel
- Dash Fans
- Computer Workstation, Dash Mounted
- Auxiliary Start Circuit
- Denso® Auto A/C Heater Combo
- Radio Switch—Main/Auxiliary Power
- Driver/Passenger Ultraleather™ Captain's Chairs with Reclining Back/Slide Controls w/Power Driver Seat

INTERIOR LIGHTING

- Wardrobe Lighting
- Fluorescent Ceiling Lights with Dual Bulbs
- Decor Lighting
- Incandescent Lighting

OPTIONAL FEATURES

- Washer/Dryer (35G, 36B and 37A Only)
- CSA Package
- Ford® Chassis 6.8L Triton™ V10 Engine
- Workhorse® Chassis 8.1L Vortex V8 Engine
- Fixed Dinette w/Solid Wood Table and Ultraleather™, High Resiliency Foam Cushions

* The chassis manufacturer recommends the installation of a supplemental brake control system to activate the brakes on the vehicle or trailer you are towing.

** CSA standards may require substitution or deletion to achieve conformance.

Specifications

	34W	35G	36B	36R	37A
FORD® CHASSIS					
Engine LD	6.8L	6.8L	N/A	6.8L	6.8L
Wheelbase	228"	228"	N/A	228"	228"
GVWR (lbs) (1)	22,000	22,000	N/A	22,000	22,000
Front GAWR (lbs) (2)	7,500	7,500	N/A	7,500	7,500
Rear GAWR (lbs) (2)	14,500	14,500	N/A	14,500	14,500
Base Weight (lbs) (3)	16,900	17,150	N/A	17,400	17,600
GCWR (lbs) (4)	26,000	26,000	N/A	26,000	26,000
Hitch Rating (lbs)*	5,000	5,000	N/A	5,000	5,000
Tongue Weight (lbs)*	500	500	N/A	500	500
Fuel Capacity (gal)	75	75	N/A	75	75

WORKHORSE® CHASSIS					
Engine LD	8.1L	8.1L	8.1L	8.1L	8.1L
Wheelbase	228"	228"	228"	228"	228"
GVWR (lbs) (1)	22,000	22,000	22,000	22,000	22,000
Front GAWR (lbs) (2)	8,000	8,000	8,000	8,000	8,000
Rear GAWR (lbs) (2)	14,500	14,500	14,500	14,500	14,500
Base Weight (lbs) (3)	17,550	17,850	18,600	18,050	18,300
GCWR (lbs) (4)	26,000	26,000	26,000	26,000	26,000
Hitch Rating Weight (lbs)*	5,000	5,000	5,000	5,000	5,000
Tongue Weight (lbs)*	500	500	500	500	500
Fuel Capacity (gal)	75	75	75	75	75

DIMENSIONS AND CAPACITIES

Overall Length (5)	34' 8"	35' 8"	36' 2"	36' 2"	37' 8"
Overall Height (with A/C) (8)	11' 11"	11' 11"	11' 11"	11' 11"	11' 11"
Overall Width (maximum) (6)	102"	102"	102"	102"	102"
Interior Height (maximum)	79"	79"	79"	79"	79"
Interior Width (maximum)	96"	96"	96"	96"	96"
Fresh Water Holding Tank (gal)	100	100	100	100	100
Grey Water Holding Tank (gal)	58	58	58	58	58
Black Water Holding Tank (gal)	42	42	42	42	42
Appliance LPG Tank (gal) (WC) (7)	25	25	25	25	25
Water Heater Tank (gal)	10	10	10	10	10

LIQUID WEIGHT REFERENCE

Water (gal) = (8.3 lbs/3.8 kgs) Fuel (gal) = (6.1 lbs/2.8 kgs) LPG (gal) = (4.2 lbs/1.9 kgs)

METRIC CONVERSION

Multiply pounds x 0.453 to obtain kilograms

Multiply gallons x 3.785 to obtain liters

1. GVWR (Gross Vehicle Weight Rating): Means the maximum permissible loaded weight of the motor home. The GVWR is equal to or greater than the sum of the unloaded vehicle weight plus the net carrying capacity.
2. GAWR (Gross Axle Weight Rating): Means the maximum permissible loaded weight a specific axle is designed to carry.
3. Base Weight: Means the estimated weight of the motor home without fuel, options, water, cargo or passengers.
4. GCWR (Gross Combined Weight Rating): Means the value specified by the motor home manufacturer as the maximum allowable loaded weight of this motor

- home with its towed vehicle. Towing and braking capacities may differ. Refer to Fleetwood and chassis manufacturer manuals for complete information.
5. Length taken from front bumper to rear bumper (excludes accessories).
6. Excludes safety equipment and awnings.
7. Tank Manufacturer's listed water capacity (WC). Actual LPG capacity is 80% of water listing as required by the safety code.
8. Add 6" for Workhorse® chassis.

* The chassis manufacturer recommends the installation of a supplemental brake control system to activate the brakes on the vehicle or trailer you are towing.

IMPORTANT—PLEASE READ: Product information, photography and illustrations included in this publication were as accurate as possible at the time of printing. For further product information and changes, please visit our website at www.fleetwoodrv.com or contact your local Fleetwood dealer. Prices, materials, design and specifications are subject to change without notice. All weights, fuel, liquid capacities and dimensions are approximate. Fleetwood has designed its recreational vehicles to provide a variety of uses for its customers. Each vehicle features optimal seating, sleeping, storage and fluid capacities. The user is responsible for selecting the proper combination of loads (i.e. occupants, equipment, fluids, cargo, etc.) to ensure that the vehicle's capacities are not exceeded.

Why would you buy anything else?

For every road you travel, Fleetwood has the RV to fit your high standards and lifestyle. We build the recreational vehicles America wants, accounting for nearly one out of every three RVs on the road today. How do we do it? We call it the **Fleetwood Equation**.

Size + Service + Quality = Value!

Size *The world's #1 RV manufacturer*

For over a half-century Fleetwood has grown to become the largest manufacturer of recreational vehicles in the world. Fleetwood remains, year after year, the largest, most influential, innovative and recognized leader in the RV industry.

Service *Listening to our customers*

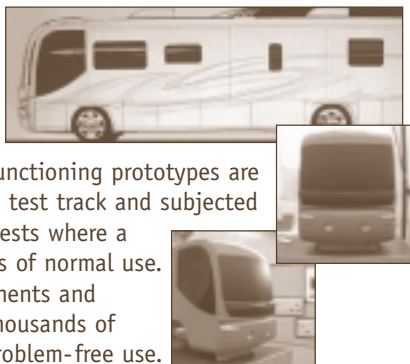
With over 1,100 service dealers in the US and Canada, Fleetwood has the largest network in the RV industry. No other RV company comes close in equaling this vital customer support system. Fleetwood RV service dealers have instant, real-time electronic access to your service records as well as parts inventory and warranty repair authorization inquiries. We also provide a customer call center for service and product information so no matter where you travel in North America, professional support and fast answers are always nearby. Call toll free: **1-800-322-8216**.



Quality *Using only the best materials*

At Fleetwood, quality begins at the design stage so every coach is built right, right from the start. Subsequent

to design approval, full-functioning prototypes are built, then punished on a test track and subjected to accelerated life cycle tests where a few weeks can equal years of normal use. At the same time, components and systems are test-cycled thousands of times assuring years of problem-free use.



Once approved for production, each unit is built by skilled technicians using quality materials and components, many of which are sourced through, or manufactured by, our subsidiary companies such as Gold Shield Fiberglass and Continental Lumber Products.



Fleetwood engineers specify the very best products and appliances from companies such as Coleman[®], Dometic[®], Flexsteel[®], Ford[®], Freightliner[®], Magic Chef[®], Panasonic[®], and Workhorse[®]. Companies that are experts in their respective fields and play a significant role as partners, not just suppliers.

All this assures that every Fleetwood RV has the fit, finish and details required by our high standards—as well as yours.

Value *Priced right with style*

At Fleetwood RV, we look at value as the sum of everything we offer.

- **Value** is our design, engineering expertise, and innovative manufacturing methods.
- **Value** is structures and components that are the best in the industry, that meet or exceed government and industry safety standards.
- **Value** is Ownercare—a one-year/three-year warranty with coverage from a company that will be around in the future to service your needs. Ownercare is one of the RV industry's most comprehensive programs and includes systems and applications, construction, no deductible and no service charge. And it is fully transferable for the first 12 months. See your nearest Fleetwood dealer for a full explanation of benefits and restrictions.
- **Value** is customer satisfaction. When asked, more experienced RV owners would recommend Fleetwood to a friend than any other brand. Fleetwood RVs consistently hold their value better than most RVs at trade-in time.



Value is peace of mind.

SSQV—Size, Service, Quality, and Value. Together they equate to the very best RV you can buy, and the reason you should purchase a Fleetwood over any other brand.

Require these features when you purchase your next RV... Fleetwood does!

SSQV
See you on the road!

www.fleetwoodrv.com

Visit our website to find a dealer near you or learn more about other Fleetwood products. Or call 1-800-444-4905. FOR CUSTOMER ASSISTANCE, call toll free at 1-800-322-8216, visit our website, or you may write to Fleetwood Enterprises, Inc., P.O. Box 7638, Riverside, CA 92513-7638.



Join Now! (877) 577-2560